

## Disassembly Procedure

*Please follow the information provided in this section to perform the complete disassembly procedure of the notebook. Be sure to use proper tools described before.*

**A**SUS K52 Series Notebook consists of various modules. This chapter describes the procedures for the complete notebook disassembly. In addition, in between procedures, the detailed disassembly procedure of individual modules will be provided for your service needs.

The disassembly procedure consists of the following steps:

- ◆ [Battery Module](#)
- ◆ [CPU Module](#)
- ◆ [Memory Module](#)
- ◆ [HDD Module](#)
- ◆ [Wireless LAN Module](#)
- ◆ [ODD Module](#)
- ◆ [Keyboard Module](#)
- ◆ [Top Case Module](#)
- ◆ [LCD Module](#)
- ◆ [Motherboard Module](#)

---

**BATTERY**

---

**Battery Module**

The illustration below shows how to remove the battery module.

**Remove Battery Module**

Open latch 1 and hold the latch 2 when take the battery away.

[BACK](#)

---

**CPU**

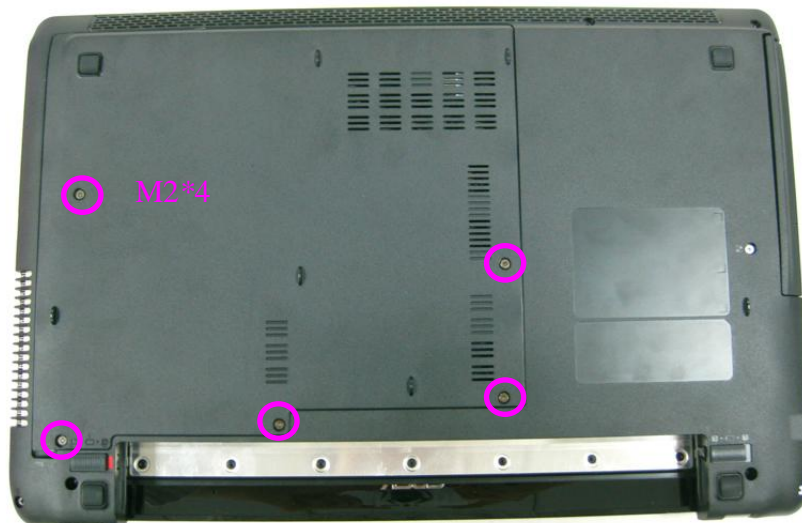
---

**CPU Module**

The illustrations below show how to remove the CPU module from the notebook.

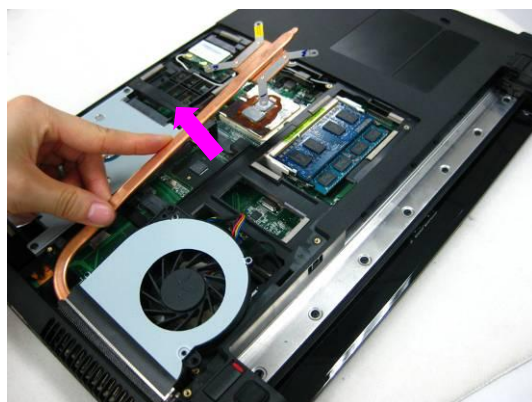
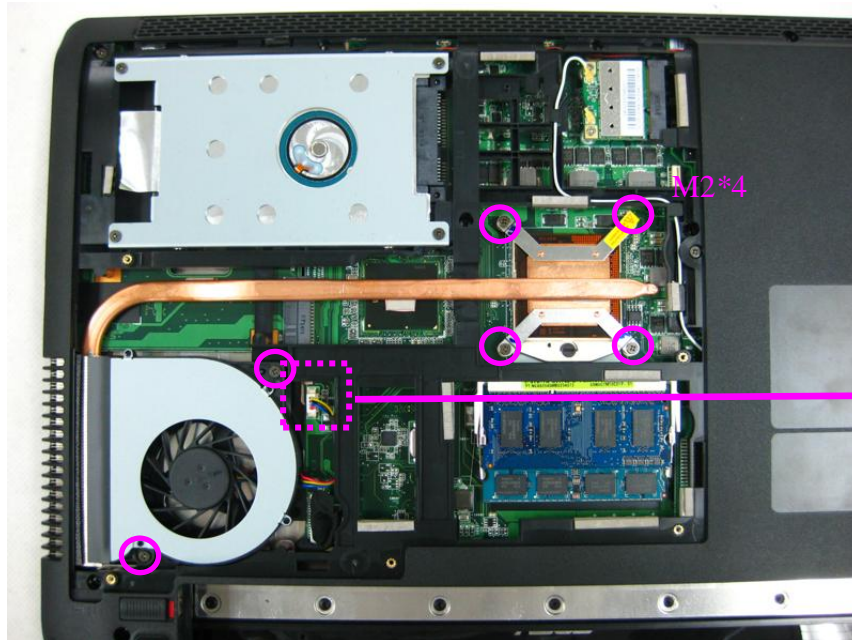
**Remove CPU Module**

1. Remove 5 screws (M2\*4) on bottom case and remove the CPU cover.

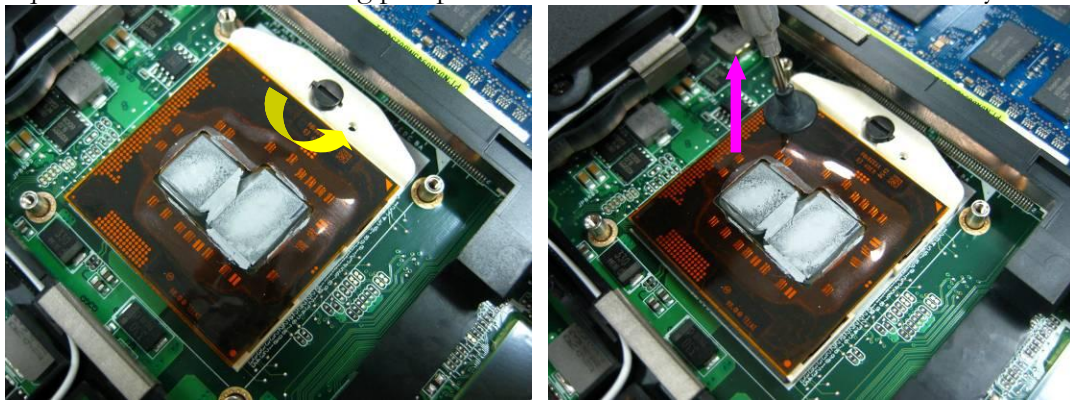




2. Disconnect the fan cable. Remove 6 screws (M2\*4) on fan and the heat sink. Then take away the thermal module.



3. Turn the non-removable screw here 180 degrees counter-clockwise to loosen the CPU. Squeeze the vacuum handling pump on the CPU and use it to lift the CPU away.



[BACK](#)

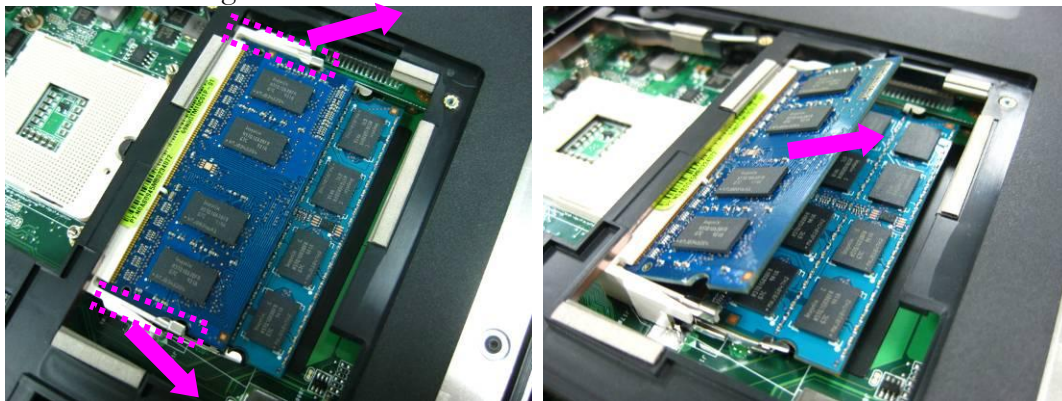
**MEMORY**

**Memory Module**

The illustration shows how to remove the Memory Module form the notebook.

**Remove Memory Module**

Pull two latches here to pop the memories module up at 45° angles, and then pull out the module at that angle.



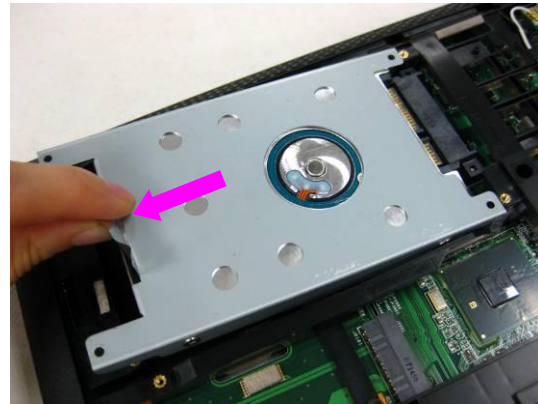
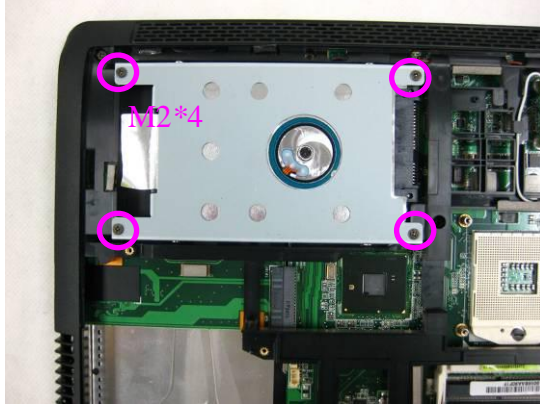
[BACK](#)

## HDD Module

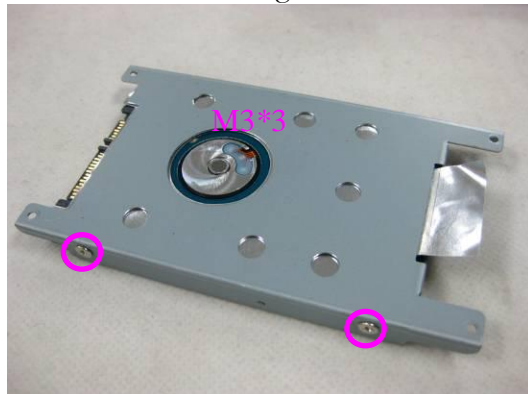
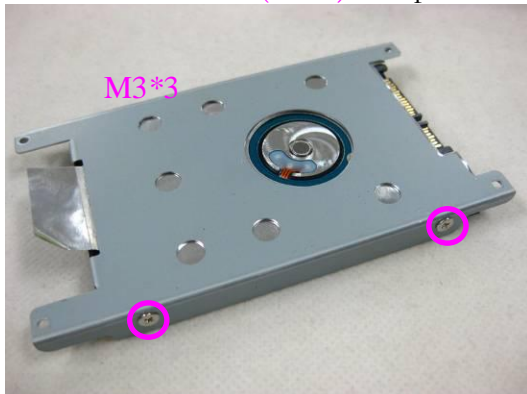
The illustrations below show how to remove the HDD Module from the notebook.

### Remove HDD Module

1. Remove 4 screws (M2\*4) on HDD module. Lift up the HDD module and take it away.



2. Remove 4 screws (M3\*3) to separate HDD from HDD housing



[BACK](#)

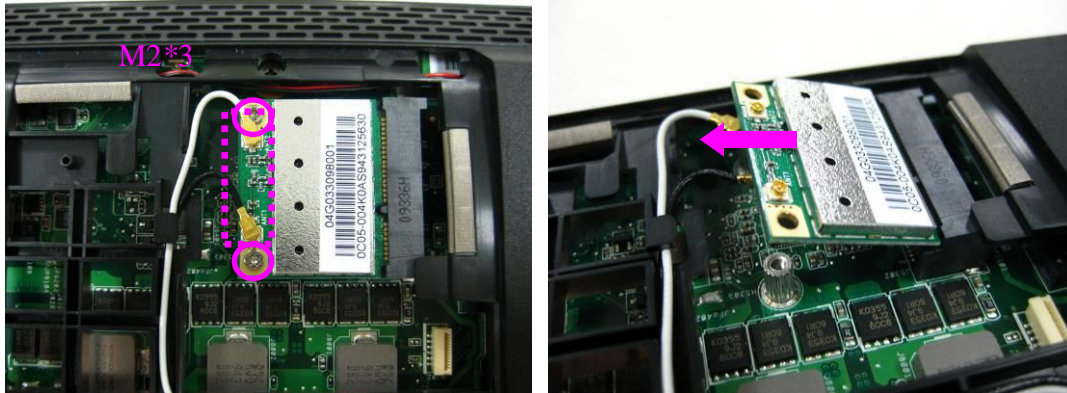
**WLAN**

**Wireless LAN Module**

The illustration below shows how to remove the Wireless LAN Module from the notebook.

**Remove Wireless LAN Module**

Disconnect the antennas and remove 2 screws (M2\*4) on Wireless LAN card and pull out the card from its slot.



[BACK](#)

**ODD**

**ODD Module**

The illustrations below show how to remove the ODD Module.

**Remove ODD Module**

1. Remove 2 screws (M2\*4) on the bottom case and pull out the ODD module from the compartment.



[BACK](#)

## Keyboard Module

The illustrations below show how to remove the Keyboard and disassemble the Keyboard Cover.

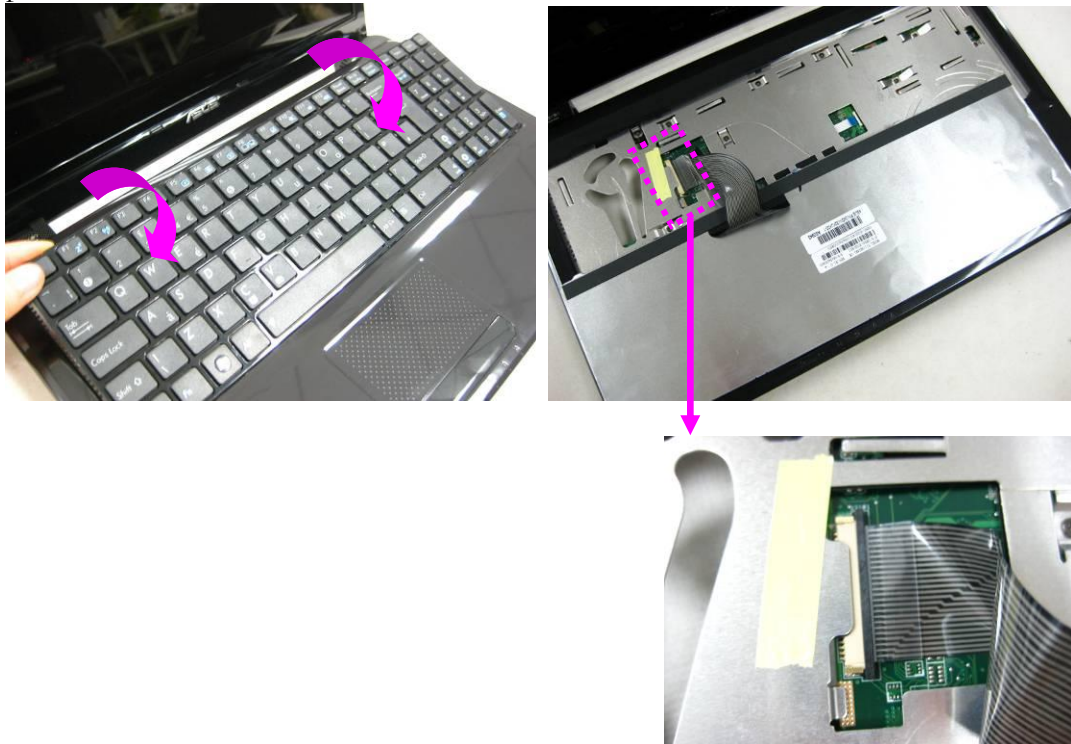
KEYBOAR

### Remove the Keyboard

1. Open 5 latches (ESC, F5, F9, PrtSc and End) on keyboard module by a pair of tweezers.

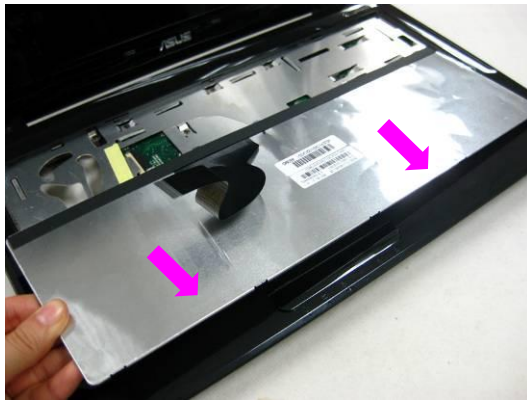
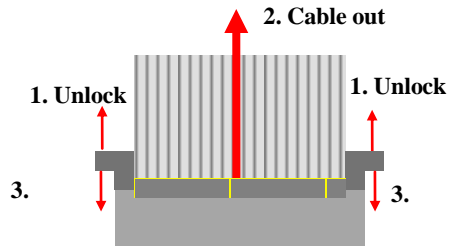


2. Turn over the keyboard plate and disconnect the keyboard FPC and remove the keyboard plate.



**Remove Keyboard Cable**

1. Use a flexible connector tool to unlock the cable connector on both ends (no. 1).
2. Carefully pull out the keyboard cable (no. 2) with a pair of tweezers.
3. Lock the connector (no. 3) again to avoid possible breakage.



[BACK](#)



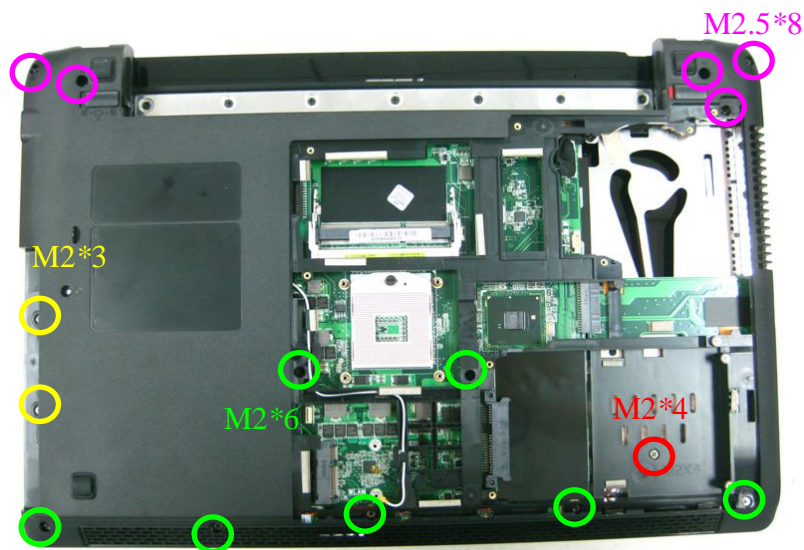
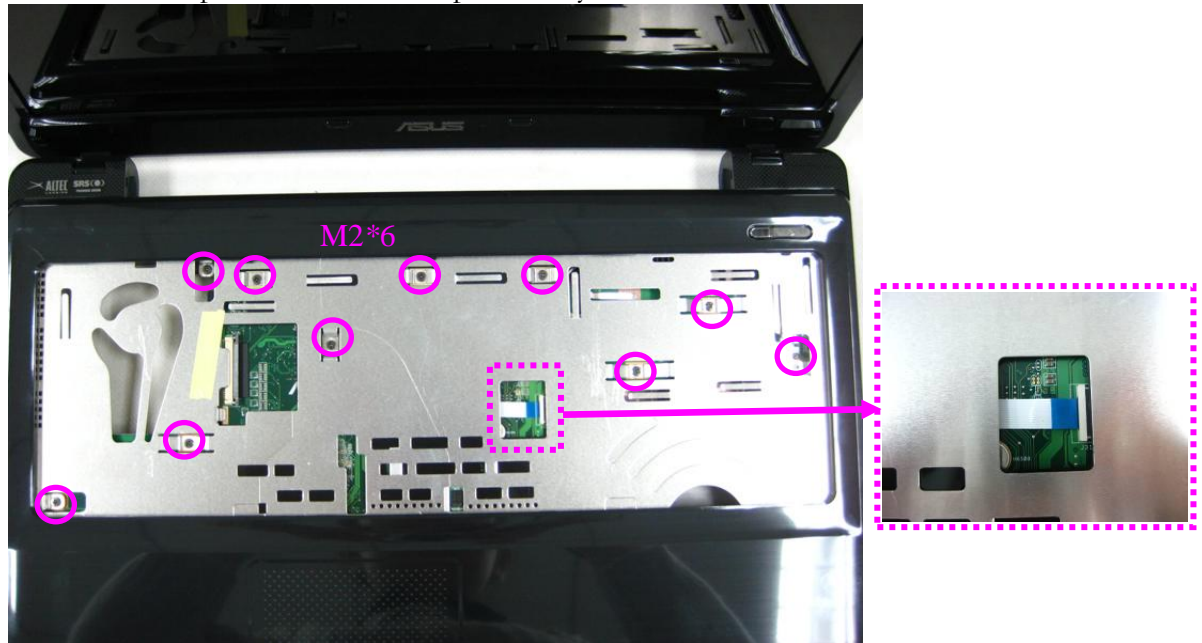
TOP CASE

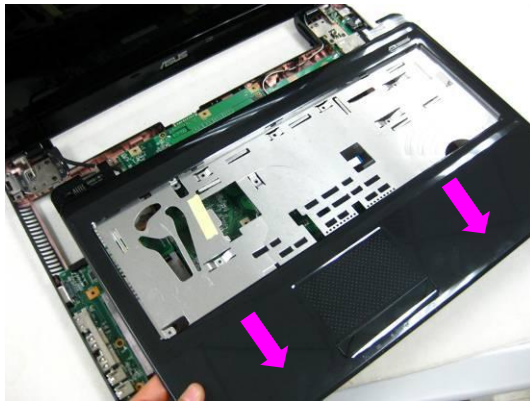
## Top Case Module

The illustrations below show how to remove and disassemble the Top Case Module of the notebook.

### Remove the Top Case Module

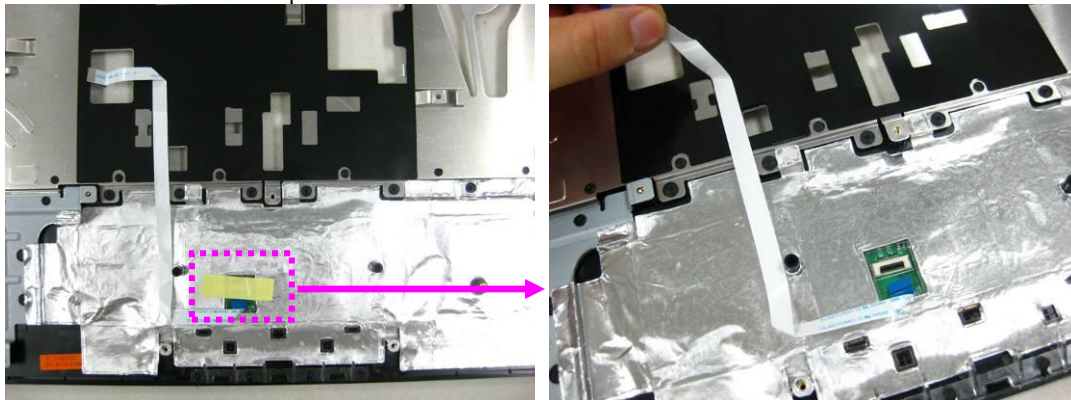
1. Remove 10 screws (M2\*6) on the top case and disconnect the touchpad FPC. Turn over the device and remove 15 screws (M2\*3, M2\*4, M2\*6, M2.5\*8) on the bottom case. Then separate the bottom case from the top case and take the top case away.





**Disassemble the Top Case Module**

2. Disconnect the touchpad FPC and remove the FPC.



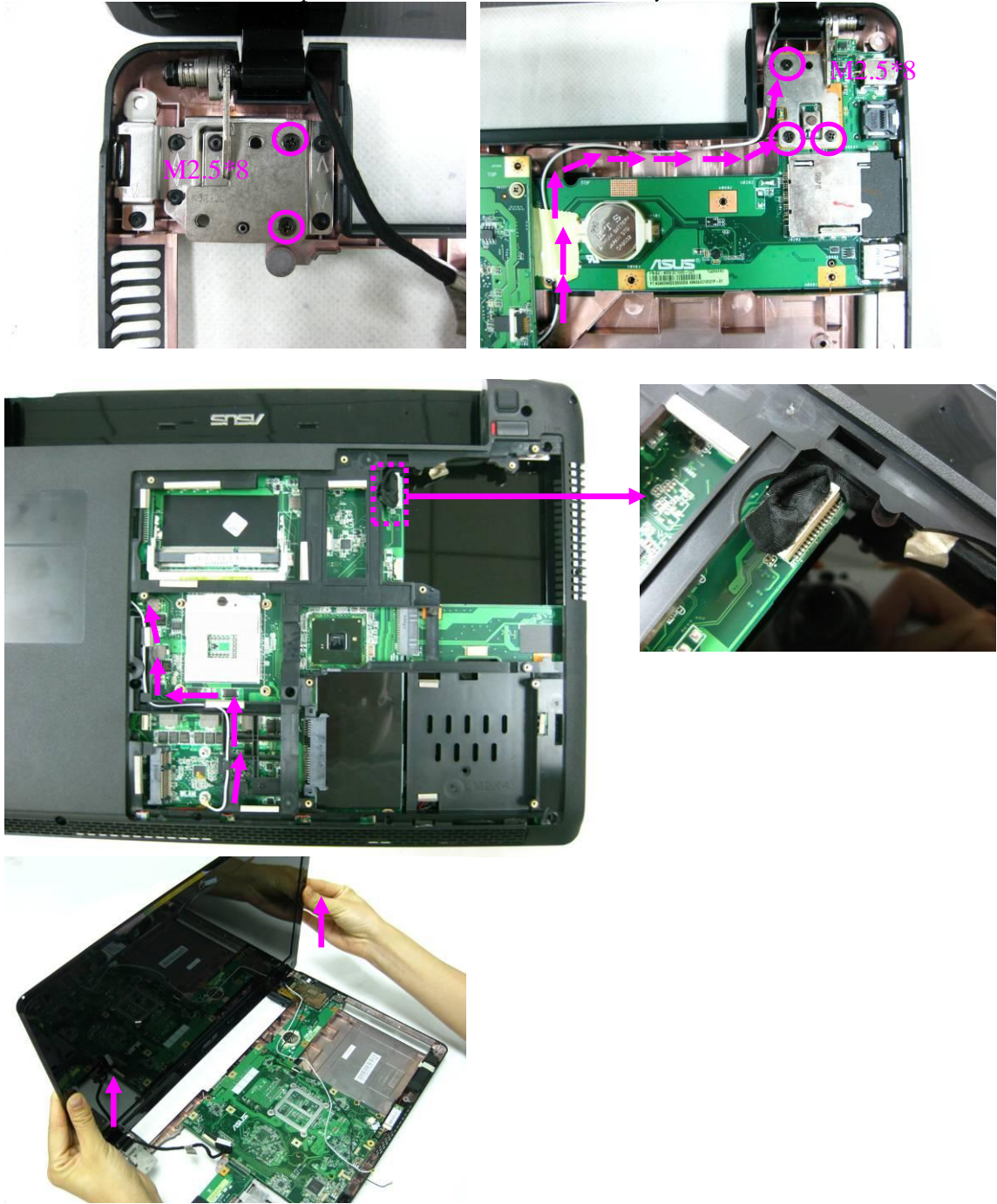
[BACK](#)

## LCD Module

The illustrations below show how to remove and disassemble the LCD Module.

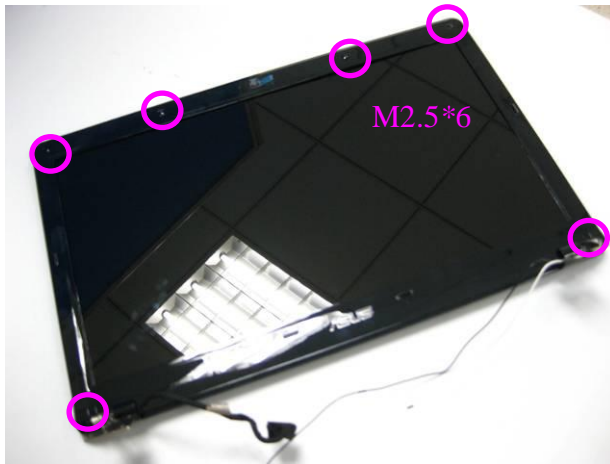
### Remove the LCD Module

1. Remove 5 screws (M2.5\*8) securing the LCD module. Disconnect the LVDS cable and release the WLAN antennas. Then lift up the LCD module and take it away.

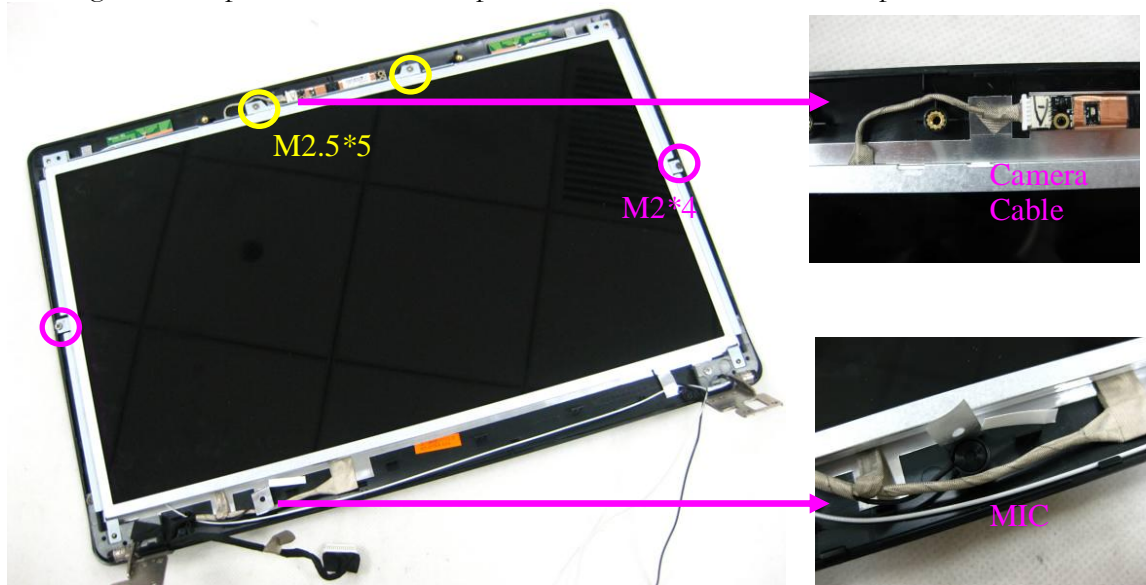


**Disassemble the LCD Module**

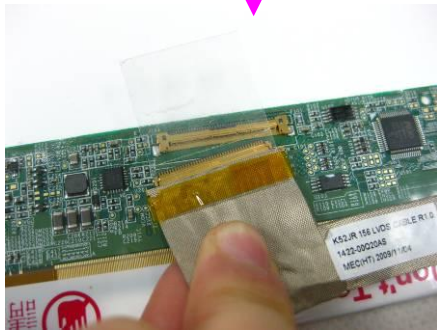
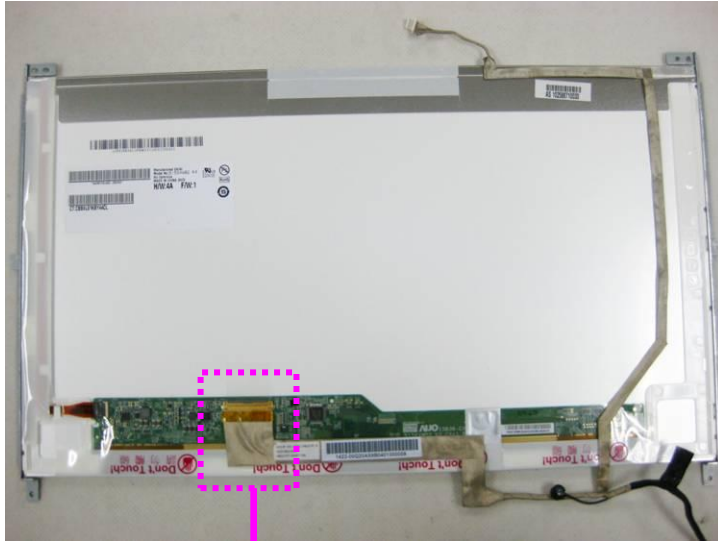
2. Remove 6 screws (M2.5\*6) on the LCD bezel. Pry the edges of LCD bezel and remove the front bezel.



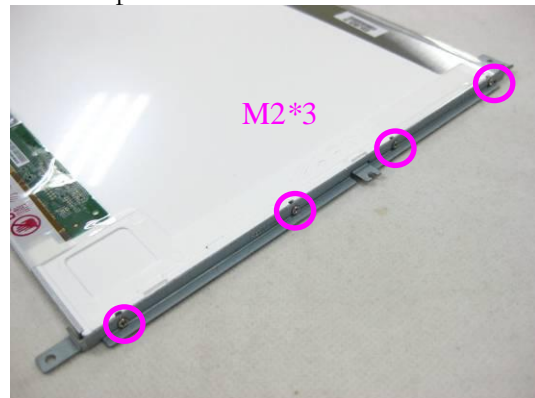
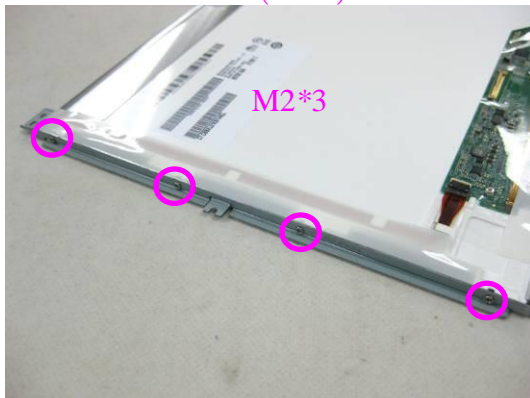
3. Disconnect the camera cable and release the microphone. Remove 4 screws (M2.5\*5, M2\*4) securing the LCD panel. Remove the top bracket. Then remove the LCD panel.



4. Disconnect the LVDS cable and remove the cable.



5. Remove 8 screws (M2\*3) on LCD brackets and separate the 2 brackets.

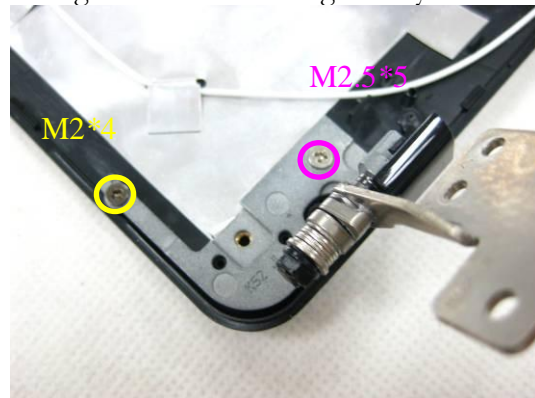
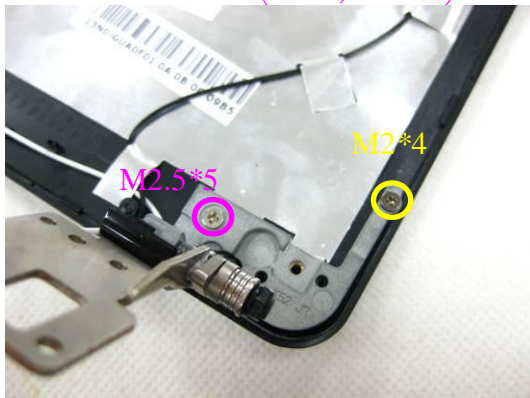




6. Remove the camera in LCD cover.



7. Remove 2 screws (M2\*4, M2.5\*5) on LCD hinges and take the hinges away.



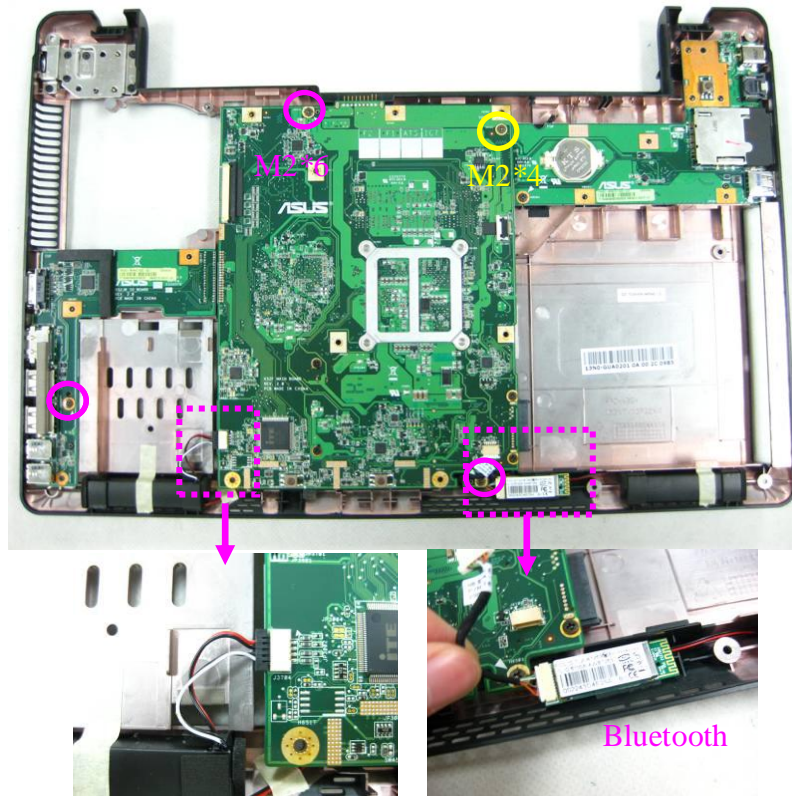
[BACK](#)

## Motherboard Module

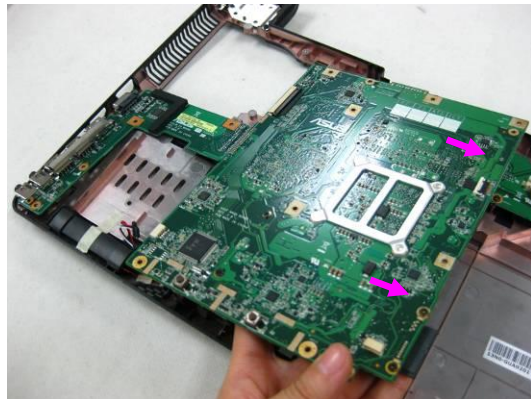
The illustrations below show how to disassemble and remove the Motherboard Module.

### Remove the Motherboard Module

1. Remove 4 screws (M2\*4, M2\*6) on the motherboard. Disconnect the Bluetooth cable and the speaker cable. Remove the motherboard



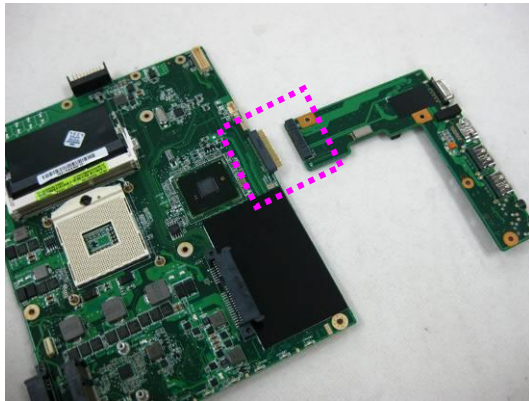
2. Remove the motherboard and the IO board from the bottom case.



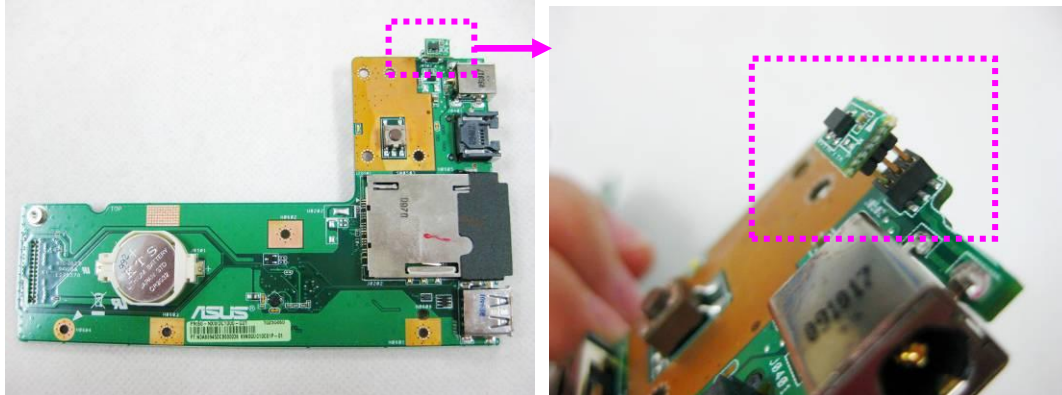


**Disassemble the Motherboard Module**

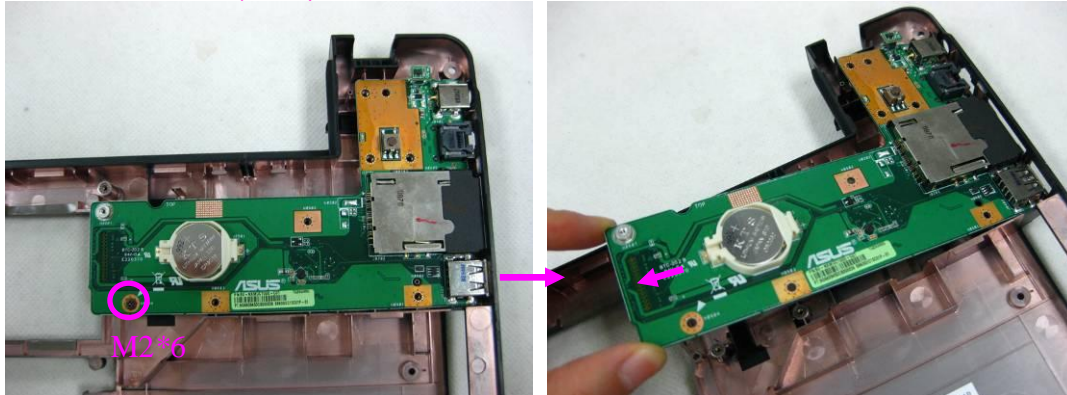
3. Disassemble the motherboard and the IO board.



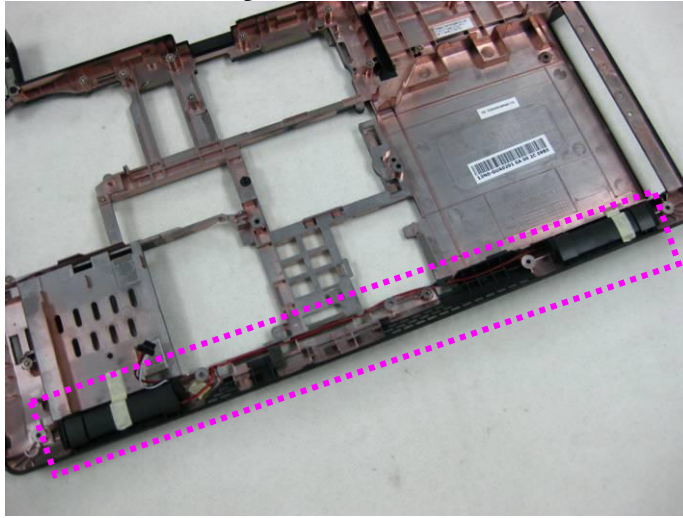
4. Remove the LID board from the IO board.



5. Remove 1 screw (M2\*6) on the DC board. Then remove the DC board from the bottom case.



6. Disassemble the speaker from the bottom case.



[\*\*BACK\*\*](#)