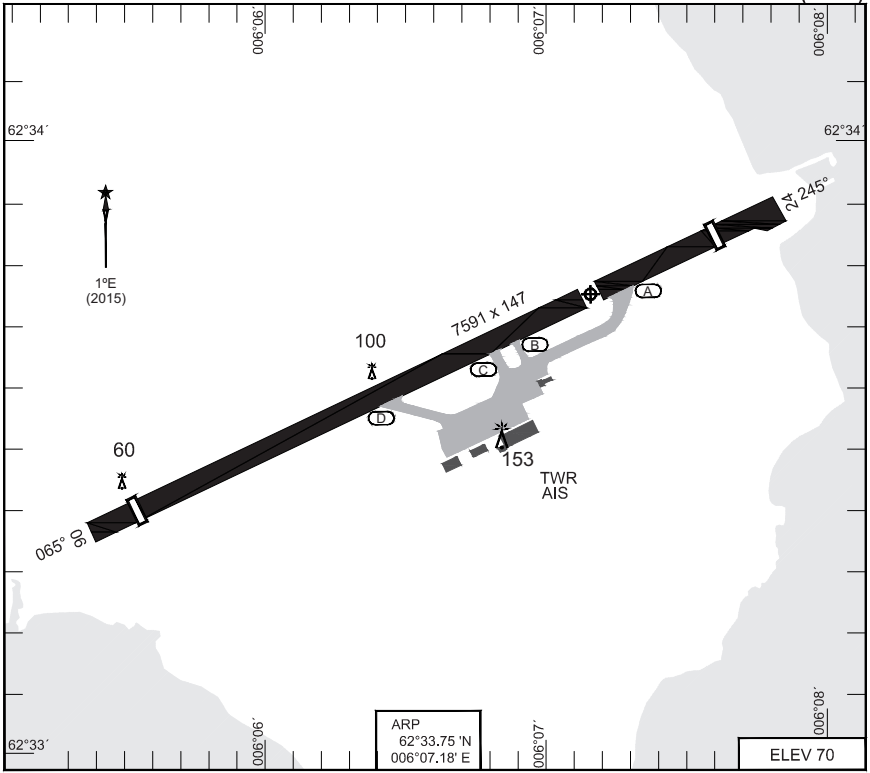


AERODROME CHART

VIGRA (ENAL)



RWY	PCN	TORA	ASDA	TODA	LDA	PAPI	TDZE	THR PSN
07	40 F/C/X/U	7099	7099	7591	6607	3.0°	67	62°33.39' N - 006°05.55' E
25	40 F/C/X/U	7591	7591	7739	6833	3.0°	69	62°33.84' N - 006°07.59' E

ATIS 128.650
VIGRA TWR 118.100

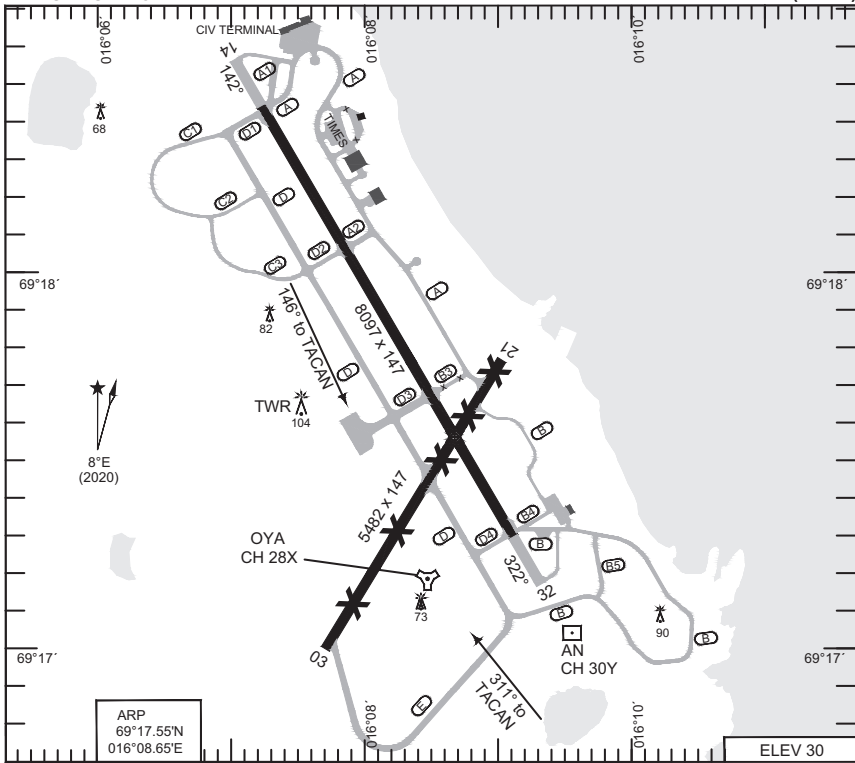
PROC. CRITERIA	RWY	GS	TCH	OTCH	RPI	CAT	MINIMA CRITERIA	MINIMA

AERODROME CHART

VIGRA (ENAL)

AERODROME CHART

ANDOEYA (ENAN)



ARP
69°17.55'N
016°08.65'E

ELEV 30

RWY	PCN	TORA	ASDA	TODA	LDA	PAPI	THR ELEV	THR PSN
14	60 F/A/W/T	8097	8097	8097	8097	3.0°	26	69°18.42'N 016°07.19'E
32	60 F/A/W/T	8097	8097	9081	8097	3.0°	17	69°17.28'N 016°09.08'E
03	RUNWAY CLOSED							
21	RUNWAY CLOSED							

ATIS 136.125
DE-ICE 121.950
ANDOEYA TWR / APPR 118.200 118.700 122.100 369.250 363.675 257.800

CHANGES: MAGVAR, RWY LENGTH, FREQS, ELEV

FIG 4F 26 JAN 2023

AERODROME CHART

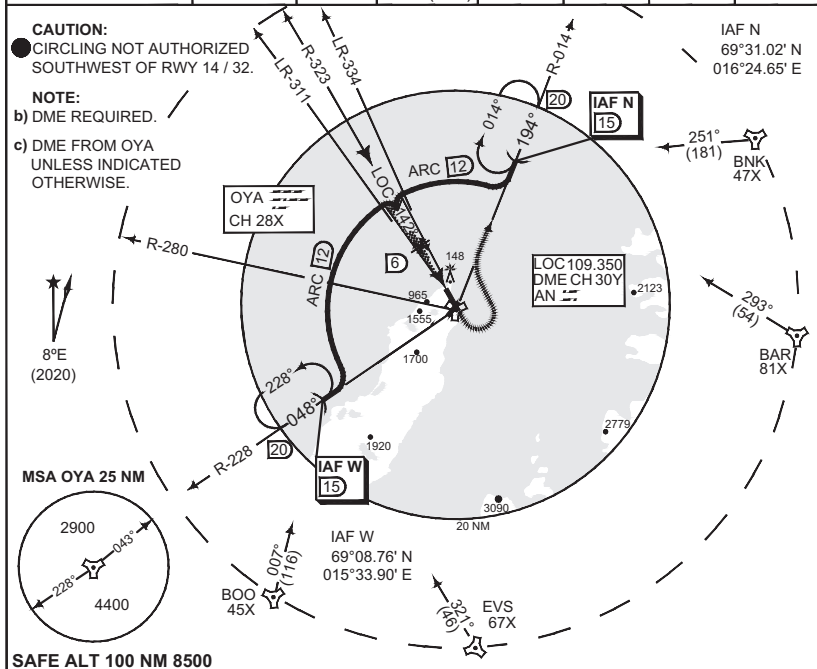
ANDOEYA (ENAN)

MIPS INSTRUMENT APPROACH CHART

AD ELEV 30

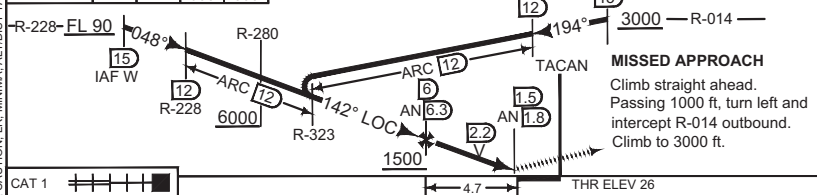
LOC M RWY 14 ANDOEYA (ENAN)

ATIS 136.125	ANDOEYA TWR / APPR 118.200 118.700 122.100 369.250 363.675 257.800						
LOCALIZER / DME AN 109.350 / CH 30Y	APP COURSE 142°	FAF ALT 1500	Descent GR 5.1% (2.9°)	MDA 340	THR ELEV 26	ALS 900 m	LDA 8097



SAFE ALT 100 NM 8500

DME	6	5	4	3	TA 7000
ALT OYA	1500	1200	890	590	
ALT AN	1410	1110	800	500	



CAT 1	THR ELEV 26				
-------	-------------	--	--	--	--

CATEGORY	A	B	C	D	E
S-LOC 14	340 - 750 314 (400 - 0.8/1.4)				
● CIRCLING	450 - 1.5 420 (500 - 1.5)	530 - 1.6 500 (500 - 1.6)	630 - 2.4 600 (600 - 2.4)	730 - 3.6 700 (700 - 3.6)	830 - 3.6 800 (800 - 3.6)

LOC M RWY 14

69°17.55' N
016°08.65' E

ANDOEYA (ENAN)

CHANGES: MAGVAR, ELEV, CAUTION, LR, MINIMA, ALTDIST TABLE

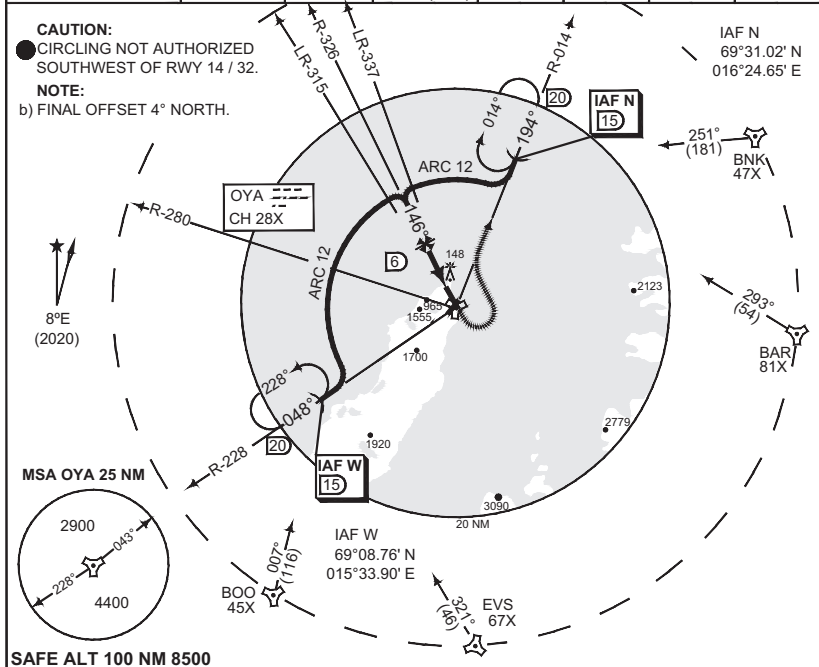
RNDAP - 26 JAN 2023

MIPS
INSTRUMENT APPROACH CHART

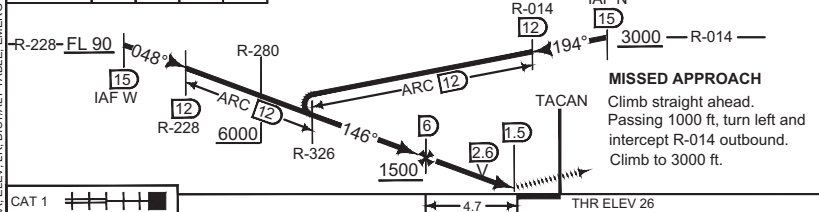
AD ELEV 30

TACAN RWY 14
ANDOEYA (ENAN)

ATIS 136.125	ANDOEYA TWR / APPR 118.200 118.700 122.100 369.250 363.675 257.800						
TACAN OYA 28X	APP COURSE 146°	FAF ALT 1500	Descent GR 5.1% (2.9°)	MDA 480	THR ELEV 26	ALS 900 m	LDA 8097



SAFE ALT 100 NM 8500					TA 7000
DME OYA	6	5	4	3	
ALT	1500	1200	890	590	



CATEGORY	A	B	C	D	E
S-TAC 14	480 - 1400 454 (500 - 1.4/2.1)				
● CIRCLING	450 - 1.5 420 (500 - 1.5)	530 - 1.6 500 (500 - 1.6)	630 - 2.4 600 (600 - 2.4)	730 - 3.6 700 (700 - 3.6)	830 - 3.6 800 (800 - 3.6)

TACAN RWY 14

69°17.55' N
016°08.65' E

ANDOEYA (ENAN)

CHANGES: MAGVAR, MINIMA, ELEV, LR, DIST/ALT TABLE, EMERG SAFE

RND/CAF 26 JAN 2023

MIPS
INSTRUMENT APPROACH CHART

AD ELEV 30

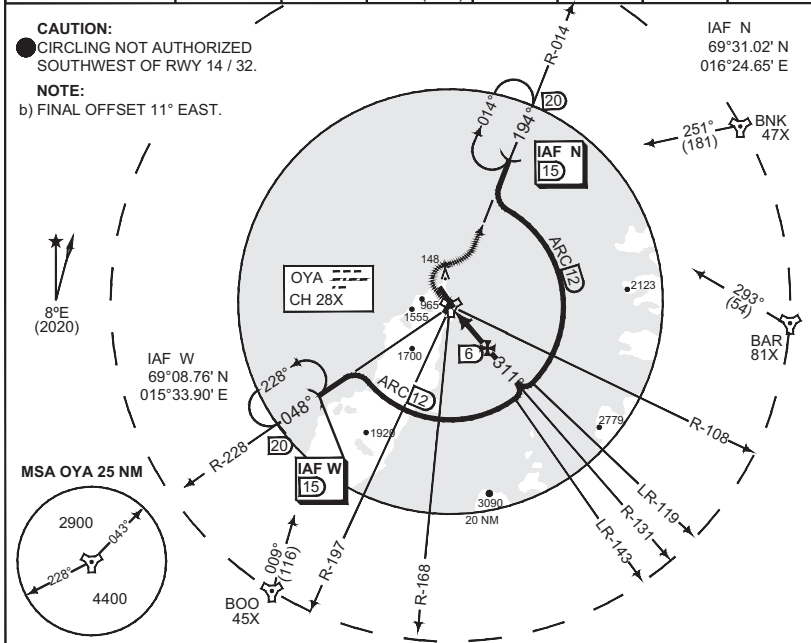
TACAN RWY 32
ANDOEYA (ENAN)

ATIS 136.125	ANDOEYA TWR / APPR 118.200 118.700 122.100 369.250 363.675 257.800						
TACAN OYA CH 28X	APP COURSE 311°	FAF ALT 2000	Descent GR 5.4% (3.1°)	MDA SEE CAT	THR ELEV 17	ALS 900 m	LDA 8097

CAUTION:
● CIRCLING NOT AUTHORIZED
SOUTHWEST OF RWY 14 / 32.

NOTE:
b) FINAL OFFSET 11° EAST.

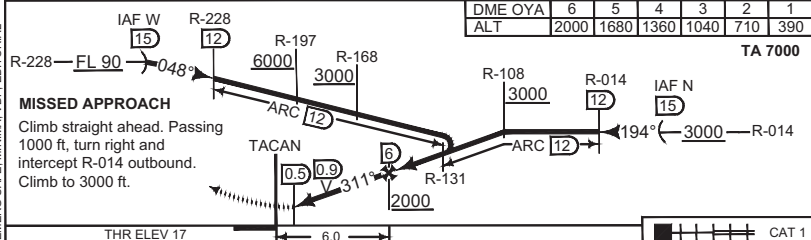
IAF N
69°31.02' N
016°24.65' E



SAFE ALT 100 NM 8500

DME OYA	6	5	4	3	2	1
ALT	2000	1680	1360	1040	710	390

TA 7000



MISSED APPROACH

Climb straight ahead. Passing 1000 ft, turn right and intercept R-014 outbound. Climb to 3000 ft.

CATEGORY	A	B	C	D	E
S-TAC 32	370 - 900 353 (400 - 0.9/1.6)	400 - 1100 383 (400 - 1.1/1.8)	430 - 1200 413 (500 - 1.2/1.9)	450 - 1300 433 (500 - 1.3/2.0)	500 - 1500 483 (500 - 1.5/2.3)
● CIRCLING	450 - 1.5 420 (500 - 1.5)	530 - 1.6 500 (500 - 1.6)	630 - 2.4 600 (600 - 2.4)	730 - 3.6 700 (700 - 3.6)	830 - 3.6 800 (800 - 3.6)

TACAN RWY 32

69°17.55' N
016°08.65' E

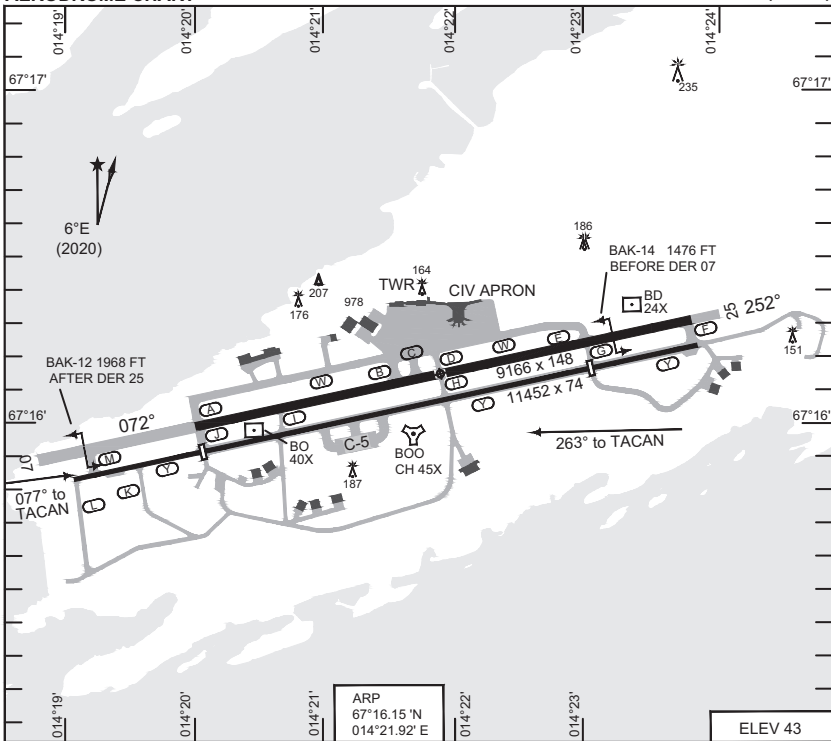
ANDOEYA (ENAN)

CHANGES: MAGVAR, ELEV, EMERG SAFE, MINIMA, VDP, EDITORIAL

RNOIAP 26 JAN 2023

AERODROME CHART

BODOE (ENBO)



RWY	PCN	TORA	ASDA	TODA	LDA	PAPI	THR ELEV	THR PSN
07	65 R/B/X/U	9166*	9166*	10049*	9166	3.0°	19	67°16.00' N - 014°20.05' E
25	65 R/B/X/U	9166*	9166*	9166*	9166	3.5°	41	67°16.31' N - 014°23.84' E

Regarding use of TWY Y for T/O and landing, check local regulations.

*RWY extension between TWY M and J (1968 ft) may be used for T/O. This extension has no RWY strip or Runway End Safety Area (RESA). Declared distances (TORA, ASDA, TODA) do not include this extension.

Visiting MIL aircraft shall coordinate with Bodoë Base Operations prior to arrival. PPR for foreign MIL aircraft.

ATIS	123.900
DE-ICE	121.950
BODOE GND	121.750 358.475
BODOE TWR	118.100 398.650 257.800

CHANGES: MAGVAR, OBSTACLE

RNAIF 15 JUL 2021

AERODROME CHART

BODOE (ENBO)

**MIPS
INSTRUMENT DEPARTURE CHART**

**HPMA SALTY / HPMA BITNO DEP
BODOE (ENBO)**

AD ELEV 43

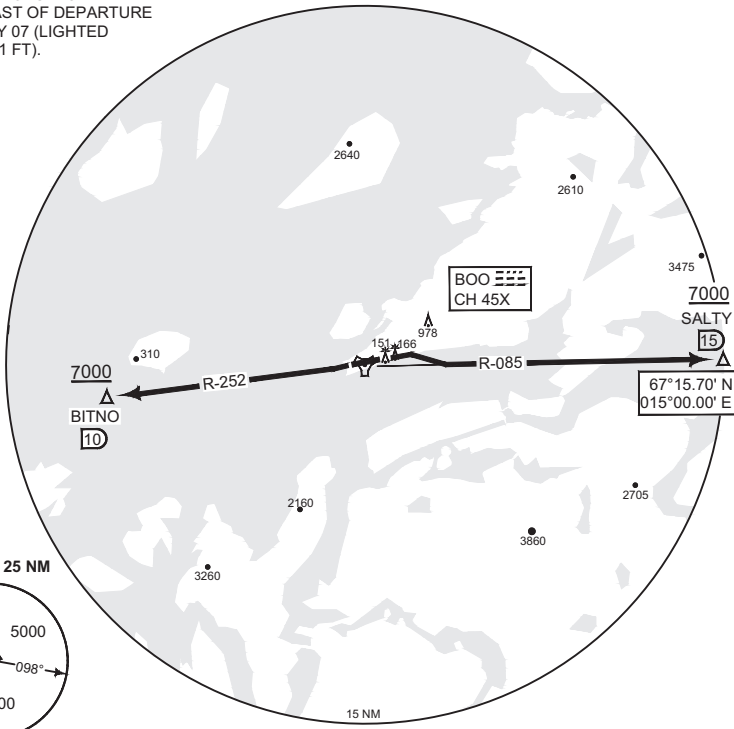
ATIS 123.900	BODOE GND 121.750 358.475	BODOE TWR 118.100 398.650	BODOE DEP 119.700 277.300
-----------------	------------------------------	------------------------------	------------------------------

POLARIS CONTROL

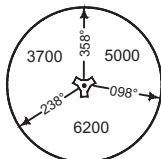
N 126.450 N 278.050 S 118.550 S 240.575

NOTE:

- a) CLOSE IN OBSTACLE
550 M EAST OF DEPARTURE
END RWY 07 (LIGHTED
MAST 151 FT).



MSA BOO 25 NM



SAFE ALT 100 NM 9200

TA 7000

HPMA SALTY (RWY 07)	<ul style="list-style-type: none"> - Climb on track 072°. - Passing 500 ft, turn right to intercept BOO R-085 outbound and continue climb to 7000 ft. - Proceed to SALTY.
HPMA BITNO (RWY 25)	<ul style="list-style-type: none"> - Climb outbound on R-252 to 7000 ft. - Proceed to BITNO.

When instructed by Bodoë TWR, contact DEP 119.700 or 277.300

HPMA SALTY / HPMA BITNO DEP

67°16.15' N
014°21.92' E

BODOE (ENBO)

CHANGES: MAGVAR, EDITORIAL

RNOCAF 15 JUL 2021

MIPS
INSTRUMENT APPROACH CHART

AD ELEV 43

HPMA ILS or LOC RWY 07
BODOE (ENBO)

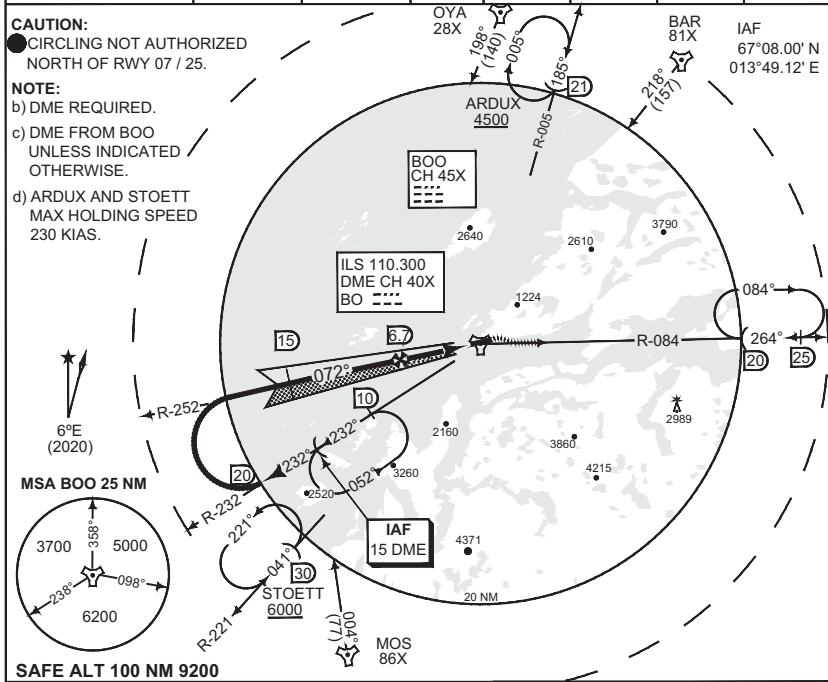
ATIS 123.900		BODOE APP 119.700 124.000 277.300 259.025			BODOE TWR 118.100 398.650 257.800			BODOE GND 121.750 358.475	
ILS/DME BO 110.300 / CH 40X		APP COURSE 072°	GS INTCP ALT 2000	GS 3.0°	DA 246	THR ELEV 19	ALS 900 m	LDA 9166	

CAUTION:

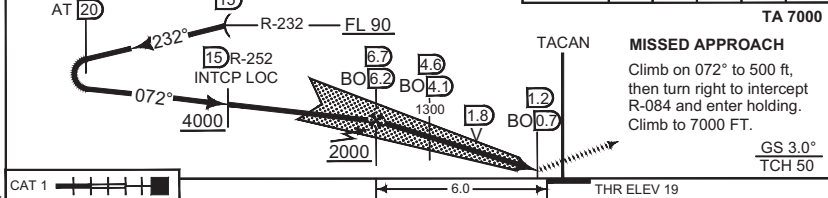
● CIRCLING NOT AUTHORIZED
NORTH OF RWY 07 / 25.

NOTE:

- b) DME REQUIRED.
- c) DME FROM BOO UNLESS INDICATED OTHERWISE.
- d) ARDUX AND STOETT MAX HOLDING SPEED 230 KIAS.



DME	6	5	4	3	2
ALT BOO	1780	1470	1150	830	510
ALT BO	1940	1620	1300	990	670



CAT 1	HPMA	
CATEGORY	HPMA	
S-ILS 07	246 - 0.8 227 (300 - 0.8/1.6)	
S-LOC 07	410 - 1.6 391 (400 - 1.6/2.4)	
● CIRCLING	1090 - 3.2 1047 (1100 - 3.2)	

HPMA ILS or LOC RWY 07 **BODOE (ENBO)**

67°16.15' N
014°21.92' E

CHANGES: DIST/ALT TABLE

RNGAUF 09 SEP 2021

MIPS
INSTRUMENT APPROACH CHART

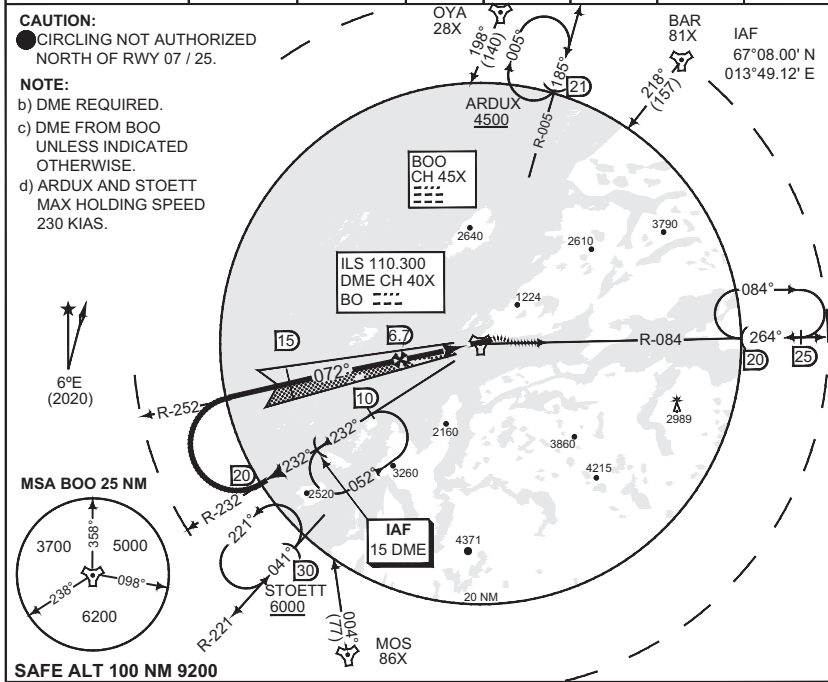
AD ELEV 43

ILS M or LOC M RWY 07
BODOE (ENBO)

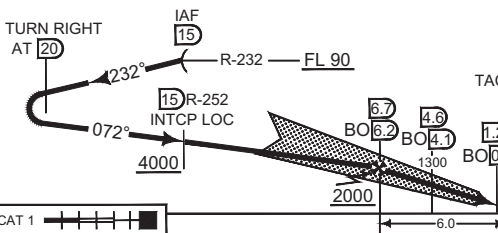
BODOE APP				BODOE TWR			BODOE GND	
ATIS 123.900	119.700	124.000	277.300 259.025	118.100	398.650	257.800	121.750	358.475
ILS/DME BO 110.300 / CH 40X		APP COURSE 072°	GS INTCP ALT 2000	GS 3.0°	DA SEE CAT	THR ELEV 19	ALS 900 m	LDA 9166

CAUTION:
● CIRCLING NOT AUTHORIZED
NORTH OF RWY 07 / 25.

NOTE:
b) DME REQUIRED.
c) DME FROM BOO
UNLESS INDICATED
OTHERWISE.
d) ARDUX AND STOETT
MAX HOLDING SPEED
230 KIAS.



DME	6	5	4	3	2
ALT BOO	1780	1470	1150	830	510
ALT BO	1940	1620	1300	990	670



CAT 1	6.0			THR ELEV 19
CATEGORY	B	C	D	
S-ILS 07	380 - 1.0 361 (400 - 1.0/1.7)	390 - 1.0 371 (400 - 1.0/1.7)	400 - 1.1 381 (400 - 1.1/1.8)	
S-LOC 07	410 - 1.1 391 (400 - 1.1/1.8)	410 - 1.1 391 (400 - 1.1/1.8)	410 - 1.2 391 (400 - 1.1/1.8)	
● CIRCLING	1090 - 4.9 1047 (1100 - 4.9)	1300 - 5.0 1257 (1300 - 5.0)	1300 - 5.0 1257 (1300 - 5.0)	

ILS M or LOC M RWY 07

67°16.15' N
014°21.92' E

BODOE (ENBO)

CHANGES: DIST/ALT TABLE

RNAV 09 SEP 2021

MIPS INSTRUMENT APPROACH CHART

AD ELEV 43

HPMA TACAN RWY 07 BODOE (ENBO)

ATIS 123.900	BODOE APP 119.700 124.000 277.300 259.025	BODOE TWR 118.100 398.650 257.800	BODOE GND 121.750 358.475
-----------------	--	--------------------------------------	------------------------------

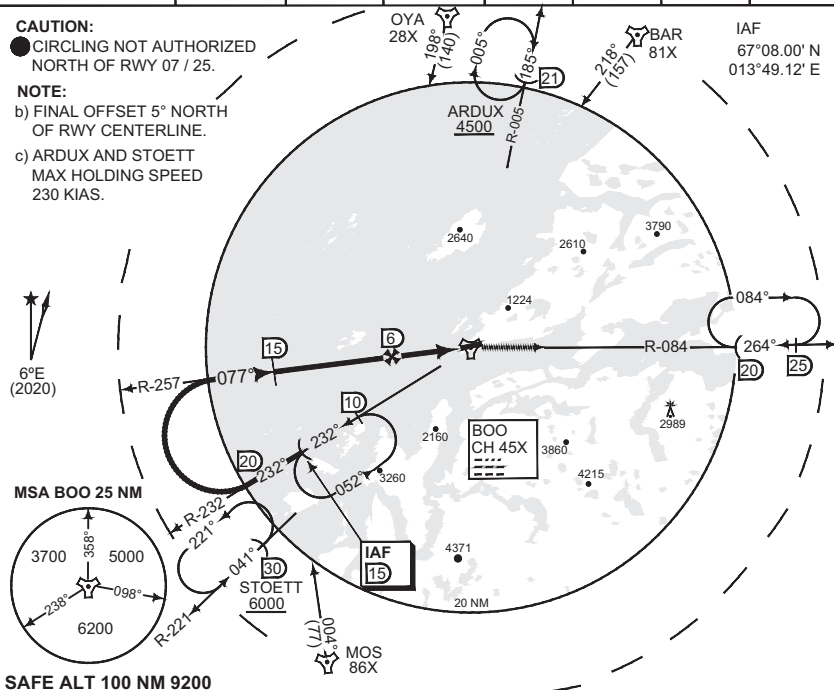
TACAN BOO CH 45X	APP COURSE 077°	FAF ALT 1800	Descent GR 5.3%	MDA 390	THR ELEV 19	ALS 900 m	LDA 9166
---------------------	--------------------	-----------------	--------------------	------------	----------------	--------------	-------------

CAUTION:

● CIRCLING NOT AUTHORIZED NORTH OF RWY 07 / 25.

NOTE:

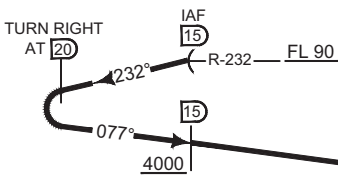
- b) FINAL OFFSET 5° NORTH OF RWY CENTERLINE.
- c) ARDUX AND STOETT MAX HOLDING SPEED 230 KIAS.



SAFE ALT 100 NM 9200

DME BOO	6	5	4	3	2
ALT	1800	1480	1160	840	510

TA 7000



MISSED APPROACH

At 1.5 DME climb on 077° to BOO, then R-084 outbound and enter holding. Climb to 7000 FT

CAT 1	
-------	--

5.4 THR ELEV 19

CATEGORY	HPMA
----------	------

S-TAC 07	390 - 1.2 371 (400-1.2/2.0)
----------	-----------------------------

● CIRCLING	1090 - 3.2 1047 (1100-3.2)
------------	----------------------------

CHANGES: MAGVAR

HPMA TACAN RWY 07

67°16.15' N
014°21.92' E

BODOE (ENBO)

RNOAF 15 JUL 2021

MIPS
INSTRUMENT APPROACH CHART

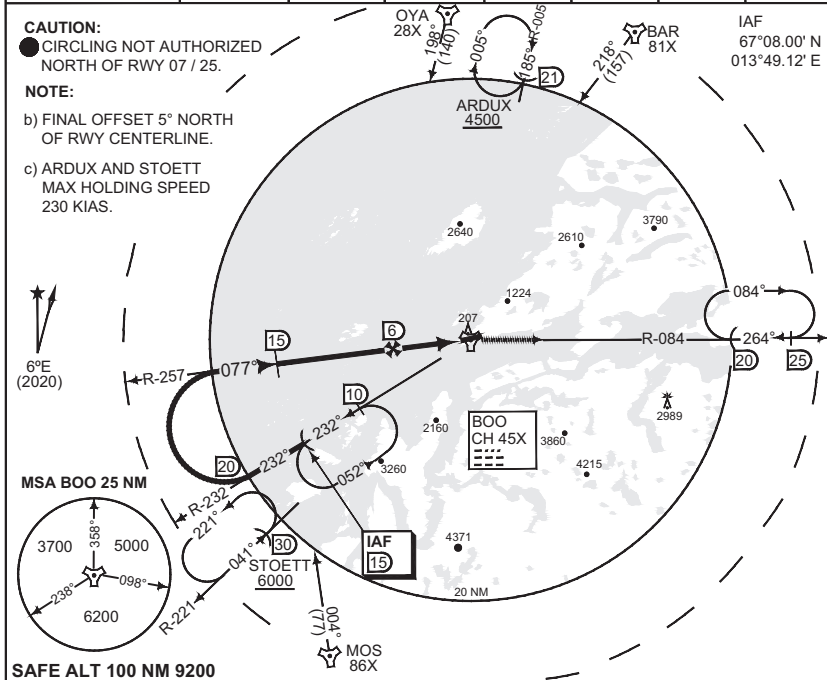
AD ELEV 43

TACAN RWY 07
BODOE (ENBO)

ATIS 123.900	BODOE APP 119.700 124.000 277.300 259.025			BODOE TWR 118.100 398.650 257.800			BODOE GND 121.750 358.475	
TACAN BOO CH 45X	APP COURSE 077°	FAF ALT 1800	Descent GR 5.3%	MDA 460	THR ELEV 19	ALS 900 m	LDA 9166	

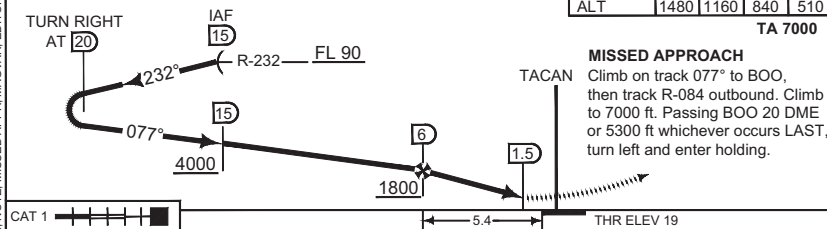
CAUTION:
● CIRCLING NOT AUTHORIZED
NORTH OF RWY 07 / 25.

- NOTE:**
- b) FINAL OFFSET 5° NORTH OF RWY CENTERLINE.
 - c) ARDUX AND STOETT MAX HOLDING SPEED 230 KIAS.



SAFE ALT 100 NM 9200

DME BOO	5	4	3	2
ALT	1480	1160	840	510



MISSED APPROACH
Climb on track 077° to BOO, then track R-084 outbound. Climb to 7000 ft. Passing BOO 20 DME or 5300 ft whichever occurs LAST, turn left and enter holding.

CAT 1 5.4 THR ELEV 19

CATEGORY	B	C	D
S-TAC 07	460 - 0.8 441 (500-0.8/1.6)	460 - 1.2 441 (500-1.2/2.0)	460 - 1.6 441 (500-1.6/2.4)
● CIRCLING	1090 - 2.8 1047 (1100-2.8)	1300 - 3.7 1257 (1300-3.7)	1300 - 4.6 1257 (1300-4.6)

TACAN RWY 07

67°16.15' N
014°21.92' E

BODOE (ENBO)

CHANGES: ALT/DIST TABLE, NOTE, MISSED APPR, MAGVAR, EDITORIAL

RNGAF 15 JUL 2021

MIPS
INSTRUMENT APPROACH CHART

AD ELEV 43

ILS M or LOC M RWY 25
BODOE (ENBO)

ATIS		BODOE APP			BODOE TWR		BODOE GND	
123.900	119.700	124.000	277.300	259.025	118.100	398.650	257.800	121.750 358.475

ILS/DME	APP COURSE	GS INTCP ALT	GS	DA	THR ELEV	ALS	LDA
BD 108.700 / CH 24X	262°	3000	3.5°	SEE CAT	41	750 m	9166

WARNING:

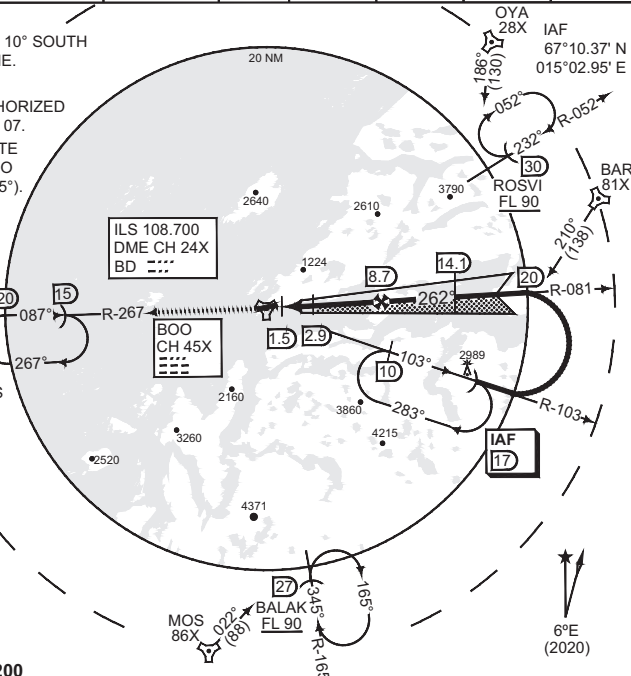
a) LOCALIZER OFFSET 10° SOUTH OF RWY CENTERLINE.

CAUTION:

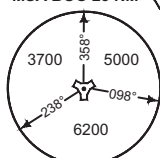
- CIRCLING NOT AUTHORIZED NORTH OF RWY 25 / 07.
- c) STEEP INTERMEDIATE SEGMENT FROM BOO 14.1 DME TO FAF (3.5°).

NOTE:

- d) DME REQUIRED.
- e) DME FROM BOO. UNLESS INDICATED OTHERWISE.
- f) BALAK AND ROSVI MAX HOLDING SPEED 230 KIAS.
- g) VSS PENETRATED S OF FINAL 0.3 NM FM THR 25.



MSA BOO 25 NM

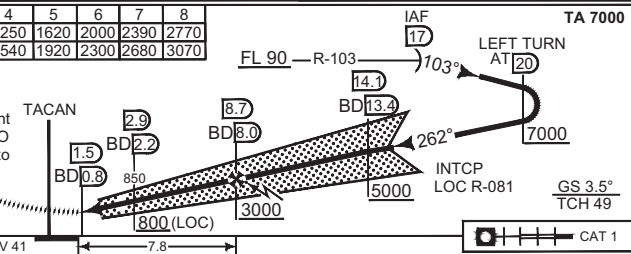


SAFE ALT 100 NM 9200

DME	2	3	4	5	6	7	8
ALT BOO	500	870	1250	1620	2000	2390	2770
ALT BD	790	1160	1540	1920	2300	2680	3070

MISSED APPROACH

At 1.5 DME climb straight ahead and intercept BOO R-267 outbound. Climb to 4000 ft and hold.



CHANGES: DISTALT TABLE

CATEGORY	B	C	D
S-ILS 25	388 - 0.8 347 (400 - 0.8/1.2)	452 - 1.2 411 (500 - 1.2/2.0)	518 - 1.6 477 (500 - 1.6/2.4)
S-LOC 25	640 - 0.8 599 (600 - 0.8/1.6)	690 - 2.0 649 (700 - 2.0/2.8)	750 - 2.8 709 (700 - 2.8/3.6)
● CIRCLING	1090 - 2.4 1047 (1100 - 2.4)	1300 - 3.7 1257 (1300 - 3.7)	1300 - 4.6 1257 (1300 - 4.6)

ILS M or LOC M RWY 25

67°16.15' N
014°21.92' E

BODOE (ENBO)

RNAIF 09 SEP 2021

MIPS
INSTRUMENT APPROACH CHART

AD ELEV 43

HPMA TACAN A
BODOE (ENBO)

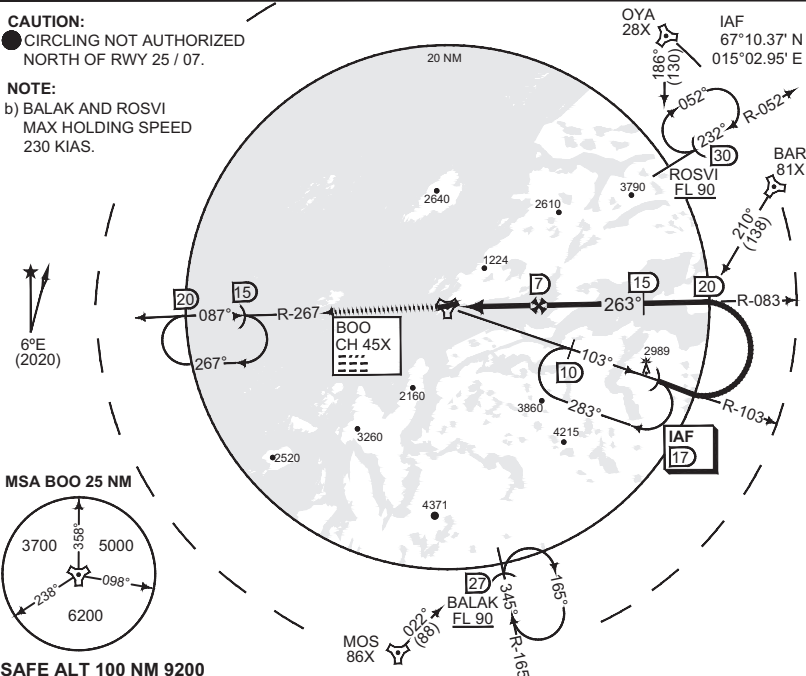
ATIS 123.900	BODOE APP 119.700 124.000 277.300 259.025			BODOE TWR 118.100 398.650 257.800		BODOE GND 121.750 358.475	
TACAN BOO CH 45X	APP COURSE 263°	FAF ALT 3100		MDA 1090			

CAUTION:

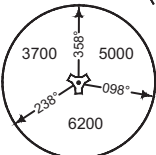
● CIRCLING NOT AUTHORIZED
NORTH OF RWY 25 / 07.

NOTE:

b) BALAK AND ROSVI
MAX HOLDING SPEED
230 KIAS.



MSA BOO 25 NM

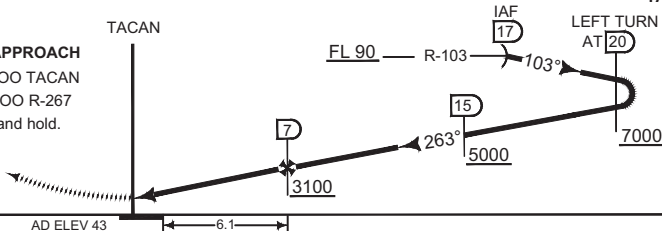


SAFE ALT 100 NM 9200

TA 7000

MISSED APPROACH

Passing BOO TACAN
climb on BOO R-267
to 4000 ft and hold.



CATEGORY		HPMA	
MIPS	● CIRCLING	1090 - 3.2 1047 (1100 - 3.2)	

HPMA TACAN A

67°16.15' N
014°21.92' E

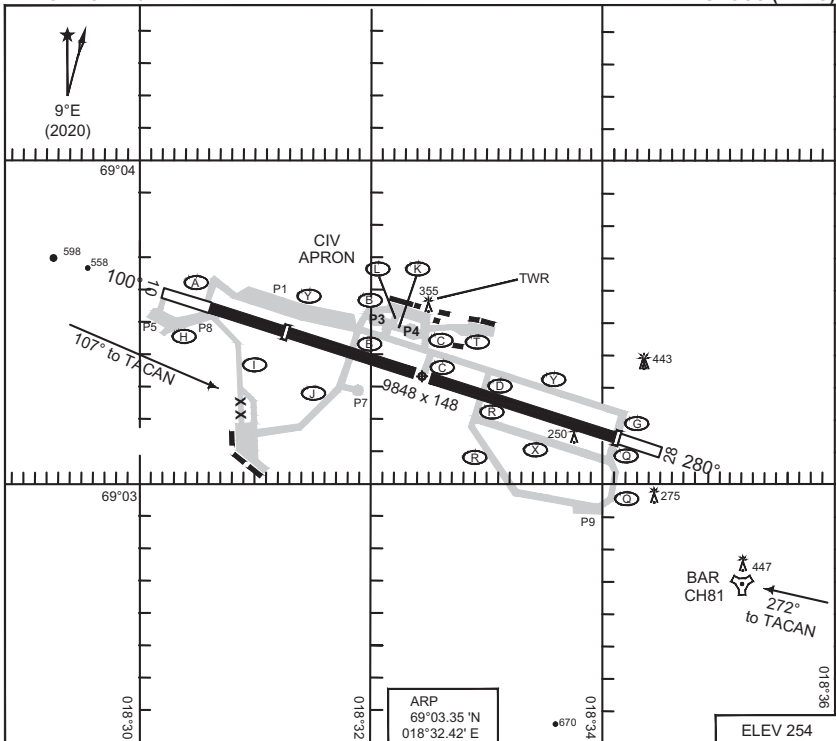
BODOE (ENBO)

CHANGES: MAGVAR

FRNOAF 15 JUL 2021

AERODROME CHART

BARDUFOSS (ENDU)



RWY	PCN	TORA	ASDA	TODA	LDA	PAPI	TDZE	THR	PSN
10	75 F/C/W/T	8015*	8015	8015	6565	4.0°	253	69°03.49' N - 018°31.23' E	
28	75 F/C/W/T	8015	8015	8015	8015	3.4°	219	69°03.14' N - 018°34.07' E	

WARNING:

Special requirements for aircrew applies due to aerodrome category B, reference EASA AMC1 ORO.FC.105(b). Also refer to Bardufoss link found at <https://avinor.no/en/ais/pilot-briefing>.

* TORA RWY 10 starts from TWY A. Use of OVERRUN WEST from TWY A (TORA 8927 FT) requires ATC approval.

ATIS	129.725	
BARDUFOSS CLR	122.100	257.800
BARDUFOSS TWR	118.100	280.700
BARDUFOSS APP	118.800	125.850 275.300 397.375
DE-ICE	131.750	
BARDUFOSS MIL OPS	126.325	262.800

CHANGES: ELEVATION, EDITORIAL

RNO/AF 26 JAN 2023

AERODROME CHART

BARDUFOSS (ENDU)

**MIPS
INSTRUMENT DEPARTURE CHART**

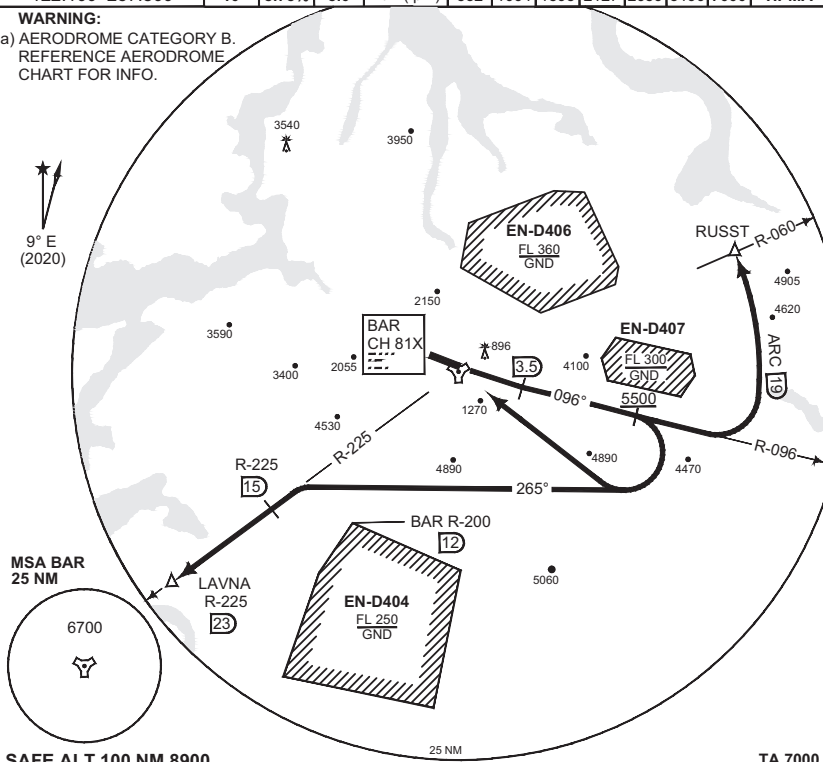
AD ELEV 254

**HPMA SID RWY 10
BARDUFOSS (ENDU)**

ATIS 129.725	BARDUFOSS TWR 118.100 280.700	BARDUFOSS APP 118.800 125.850 275.300 397.375				POLARIS CONTROL S 126.450 N 126.700 S 278.050							
BARDUFOSS CLR 122.100 257.800		RWY 10	MIN CLIMB 8.75%	5.0°	V/V (fpm)	60	120	180	240	300	360	to	reason
						532	1064	1595	2127	2659	3190	7000	HPMA

WARNING:

- a) AERODROME CATEGORY B.
REFERENCE AERODROME
CHART FOR INFO.



SAFE ALT 100 NM 8900

TA 7000

INITIAL CLIMB

Climb on track 100° to BAR 3.5 DME. Intercept BAR R-096 outbound and continue climb. Passing 5500 ft:

BARDUFOSS TACAN	- Turn right direct BAR. Maximum 350 KIAS in turn. Climb to 7000 ft.
LAVNA	- Turn right on track 265°. Intercept R-225 outbound no later than 15 DME. Proceed to LAVNA. Climb to 7000 ft. Remain clear of EN-D404 (BAR R-200 / 12 DME). Maximum 350 KIAS below 7000 ft.
RUSST	- Continue climb on R-096 outbound. Turn left to intercept 19 DME arc to RUSST. Maximum 350 KIAS in turn. Climb to FL 090.

HPMASID RWY 10

69°03.35' N
018°32.42' E

BARDUFOSS (ENDU)

CHANGES: ELEVATION, EDITORIAL

RNOCAF 26 JAN 2023

**MIPS
INSTRUMENT DEPARTURE CHART**

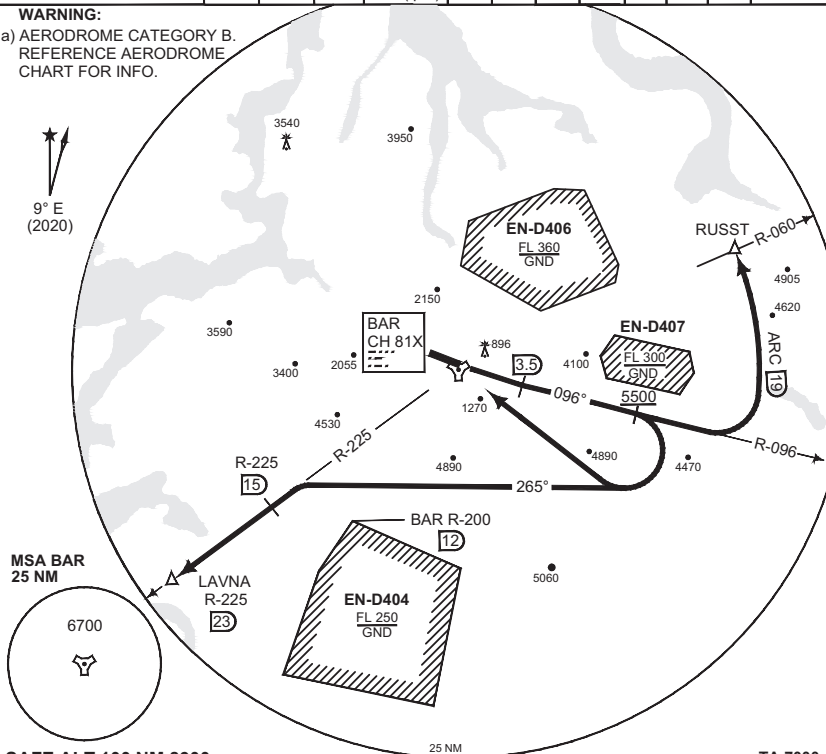
AD ELEV 254

**TACAN SID RWY 10
BARDUFOSS (ENDU)**

ATIS 129.725	BARDUFOSS TWR 118.100 280.700	BARDUFOSS APP 118.800 125.850 275.300 397.375				POLARIS CONTROL S 126.450 N 126.700 S 278.050													
BARDUFOSS CLR 122.100 257.800		RWY 10	MIN CLIMB 7.4%	4.3%	V/V (fpm)	60	120	180	240	300	360	to	reason						
												450	900	1349	1799	2249	2698	7000	TERRAIN

WARNING:

- a) AERODROME CATEGORY B.
REFERENCE AERODROME
CHART FOR INFO.



SAFE ALT 100 NM 8900

TA 7000

INITIAL CLIMB

Climb on track 100° to BAR 3.5 DME. Intercept BAR R-096 outbound and continue climb. Passing 5500 ft:

BARDUFOSS TACAN	- Turn right direct BAR. Maximum 300 KIAS in turn. Climb to 7000 ft.
LAVNA	- Turn right on track 265°. Intercept R-225 outbound no later than 15 DME. Proceed to LAVNA. Climb to 7000 ft. Remain clear of EN-D404 (BAR R-200 / 12 DME). Maximum 300 KIAS below 7000 ft.
RUSST	- Continue climb on R-096 outbound. Turn left to intercept 19 DME arc to RUSST. Maximum 300 KIAS in turn. Climb to FL 090.

TACAN SID RWY 10

69°03.35' N
018°32.42' E

BARDUFOSS (ENDU)

CHANGES: ELEVATION, EDITORIAL Y

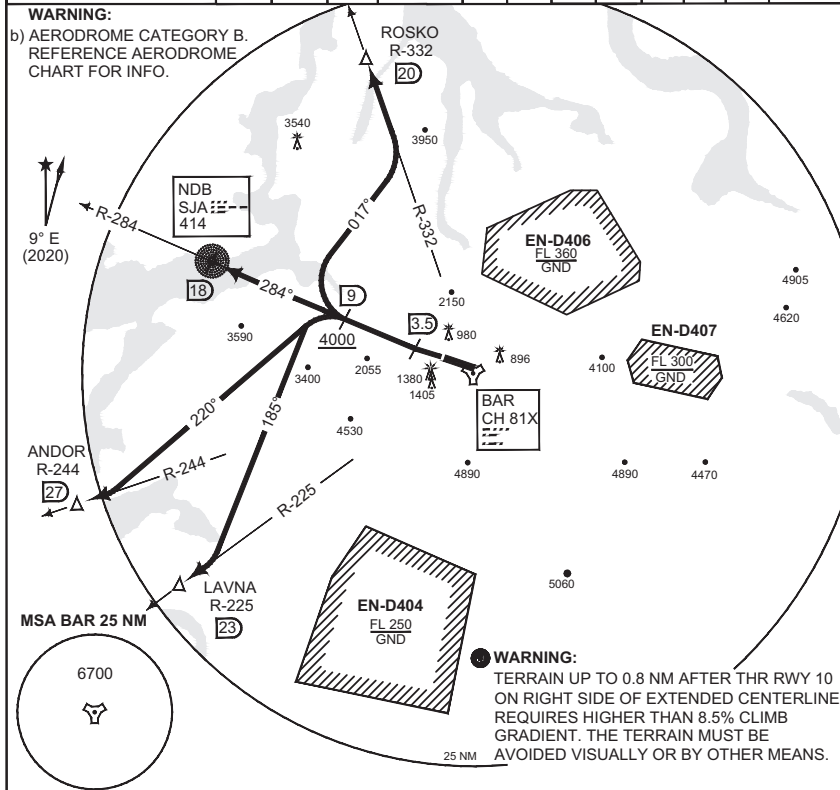
RNGA# 26 JAN 2023

**MIPS
INSTRUMENT DEPARTURE CHART**

AD ELEV 254

**HPMA SID RWY 28
BARDUFOSS (ENDU)**

ATIS 129.725	BARDUFOSS TWR 118.100 280.700	BARDUFOSS APP 118.800 125.850 275.300 397.375			POLARIS CONTROL S 126.450 N 126.700 S 278.050								
BARDUFOSS CLR 122.100 257.800		RWY 28	MIN CLIMB 8.75%	5.0°	GS (kt) V/V (fpm)	60 532	120 1064	180 1595	240 2127	300 2659	360 3190	to 7000	reason HPMA



SAFE ALT 100 NM 8900 **TA 7000**

INITIAL CLIMB
Climb on track 280° to DME 3.5 BAR. Intercept R-284 outbound and continue climb.
Cross DME 9 BAR at or above 4000 ft. Then:

ANDOR	Turn left on track 220°. Intercept R-244 to ANDOR. Climb to FL 150. Maximum 350 KIAS in turn.
LAVNA	Turn left on track 185°. Intercept R-225 BAR to LAVNA. Climb to 7000 ft. Maximum 350 KIAS in turn.
ROSKO	Turn right on track 017°. Intercept R-332 BAR to ROSKO. Climb to 7000 ft. Maximum 350 KIAS in turn.
SJA NDB (SENJA)	Continue on R-284 BAR to DME 18 BAR (SJA NDB). Climb to 7000 ft.

HPMA SID RWY 28

69°03.35' N
018°32.42' E

BARDUFOSS (ENDU)

CHANGES: ELEVATION, EDITORIAL

RNGAF 26 JAN 2023

**MIPS
INSTRUMENT DEPARTURE CHART**

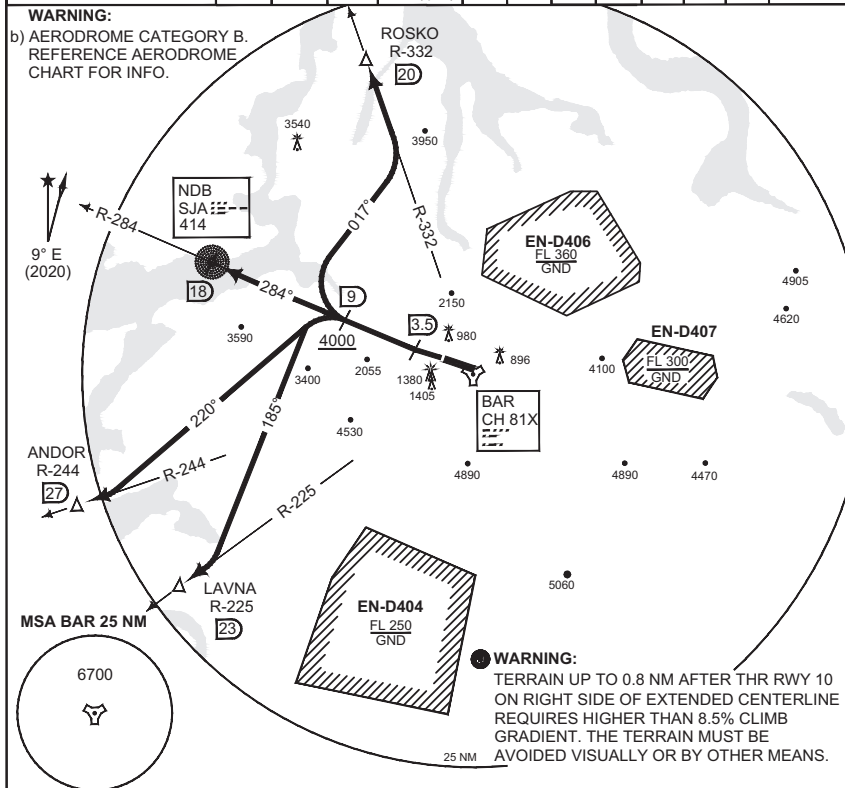
AD ELEV 254

**TACAN SID RWY 28
BARDUFOSS (ENDU)**

ATIS 129.725	BARDUFOSS TWR 118.100 280.700	BARDUFOSS APP 118.800 125.850 275.300 397.375			POLARIS CONTROL S 126.450 N 126.700 S 278.050								
BARDUFOSS CLR 122.100 257.800		RWY 28	MIN CLIMB 8.5%	4.9°	GS (kt) V/V (fpm)	60 517	120 1033	180 1550	240 2066	300 2583	360 3099	7000	to TERRAIN

WARNING:

b) AERODROME CATEGORY B.
REFERENCE AERODROME
CHART FOR INFO.



WARNING:
TERRAIN UP TO 0.8 NM AFTER THR RWY 10
ON RIGHT SIDE OF EXTENDED CENTERLINE
REQUIRES HIGHER THAN 8.5% CLIMB
GRADIENT. THE TERRAIN MUST BE
AVOIDED VISUALLY OR BY OTHER MEANS.

SAFE ALT 100 NM 8900

TA 7000

INITIAL CLIMB

Climb on track 280° to DME 3.5 BAR. Intercept R-284 outbound and continue climb.
Cross DME 9 BAR at or above 4000 ft. Then:

ANDOR	Turn left on track 220°. Intercept R-244 to ANDOR. Climb to FL 150. Maximum 300 KIAS in turn.
LAVNA	Turn left on track 185°. Intercept R-225 BAR to LAVNA. Climb to 7000 ft. Maximum 300 KIAS in turn.
ROSKO	Turn right on track 017°. Intercept R-332 BAR to ROSKO. Climb to 7000 ft. Maximum 300 KIAS in turn.
SJA NDB (SENJA)	Continue on R-284 BAR to DME 18 BAR (SJA NDB). Climb to 7000 ft.

TACAN SID RWY 28

69°03.35' N
018°32.42' E

BARDUFOSS (ENDU)

CHANGES: ELEVATION, EDITORIAL

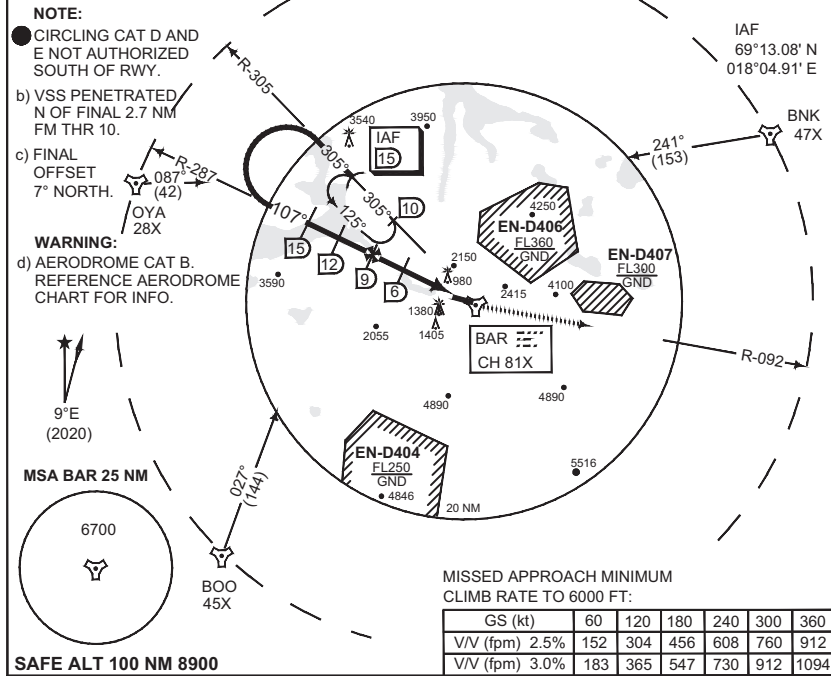
RNGAF 26 JAN 2023

MIPS INSTRUMENT APPROACH CHART

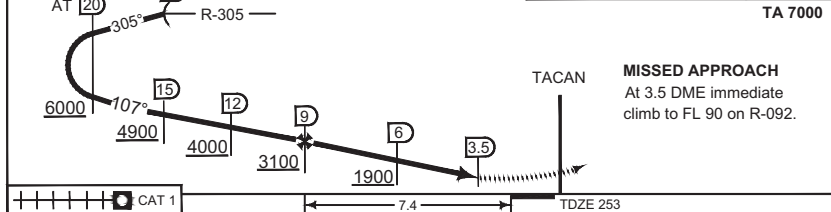
AD ELEV 254

**TACAN RWY 10
BARDUFOSS (ENDU)**

ATIS 129.725	BARDUFOSS APP 118.800 125.850 275.300 397.375			BARDUFOSS TWR 118.100 280.700			
TACAN BAR CH 81X	APP COURSE 107°	FAF ALT 3100	Descent GR 6.3% (3.6°)	MDA SEE CAT	TDZE 253	ALS 2840 m	LDA 6565



LEFT TURN AT 20	IAF 15	7000	DME BAR	9	8	7	6	5
			ALT	3100	2730	2350	1970	1590



CATEGORY	C	D	E
S-TAC 10 2.5% MA CLMB		1820 - 5.0 1567 (1600-5.0)	
S-TAC 10 3.0% MA CLMB		1470 - 5.0 1217 (1300-5.0)	
● CIRCLING	2540 - 5.0 2286 (2300-5.0)	2850 - 5.0 2596 (2600-5.0)	2950 - 5.0 2696 (2700-5.0)

TACAN RWY 10 69°03.35' N
018°32.42' E **BARDUFOSS (ENDU)**

CHANGES/ELEVATION

RNOAF 26 JAN 2023

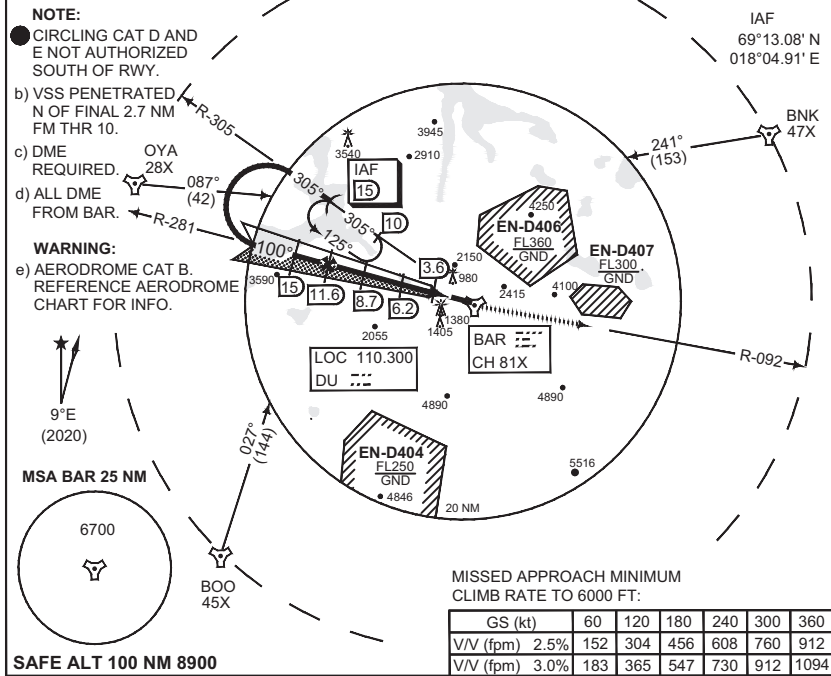
MIPS
INSTRUMENT APPROACH CHART

AD ELEV 254

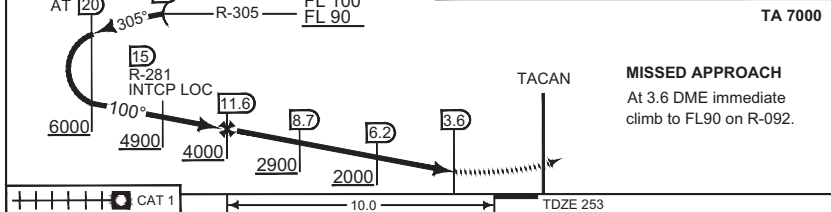
LOC M RWY 10
BARDUFOSS (ENDU)

ATIS 129.725	BARDUFOSS APP 118.800 125.850 275.300 397.375		BARDUFOSS TWR 118.100 280.700	
-----------------	--	--	----------------------------------	--

LOCALIZER/DME DU 110.300 / CH 81X	APP COURSE 100°	FAF ALT 4000	Descent GR 6.1% (3.5°)	MDA SEE CAT	TDZE 253	ALS 2840 m	LDA 6565
--------------------------------------	--------------------	-----------------	---------------------------	----------------	-------------	---------------	-------------



SAFE ALT 100 NM 8900	DME BAR	11	10	9	8	7	6	5
	ALT	3780	3410	3040	2680	2310	1940	1570



CAT 1	10.0	TDZE 253
-------	------	----------

CATEGORY	C	D	E
S-LOC 10 2.5% MA CLMB	1760 - 5.0 1507 (1600 - 5.0)	1780 - 5.0 1527 (1600 - 5.0)	1820 - 5.0 1567 (1600 - 5.0)
S-LOC 10 3.0% MA CLMB	1300 - 4100 1047 (1100 - 4.1/4.9)		
● CIRCLING	2540 - 5.0 2286 (2300 - 5.0)	2850 - 5.0 2596 (2600 - 5.0)	2950 - 5.0 2696 (2700 - 5.0)

LOC M RWY 10 69°03.35' N
018°32.42' E **BARDUFOSS (ENDU)**

CHANGES: ELEVATION

RIPREP 26 JAN 2023

MIPS INSTRUMENT APPROACH CHART

HPMA ILS or LOC RWY 28 BARDUFOSS (ENDU)

AD ELEV 254

ATIS 129.725	BARDUFOSS APP 118.800 125.850 275.300 397.375			BARDUFOSS TWR 118.100 280.700			
LOCALIZER/DME BF 108.700 / CH 81X	APP COURSE 278°	GS INTCP ALT 5200	GS 3.7°	DA 636	TDZE 219	ALS 1340 m	LDA 8015

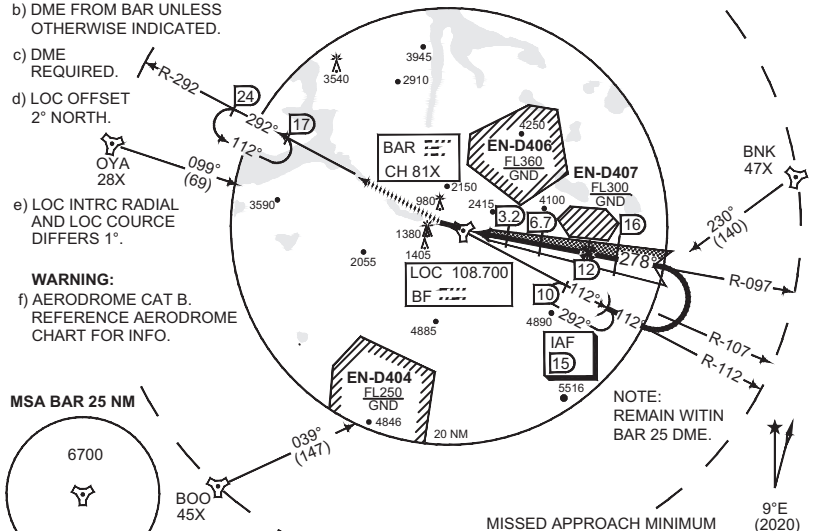
NOTE:

- CIRCLING NOT AUTHORIZED SOUTH OF RWY.
- b) DME FROM BAR UNLESS OTHERWISE INDICATED.
- c) DME REQUIRED.
- d) LOC OFFSET 2° NORTH.
- e) LOC INTRC RADIAL AND LOC COURSE DIFFERS 1°.

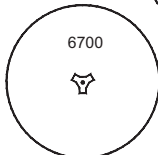
WARNING:

- f) AERODROME CAT B. REFERENCE AERODROME CHART FOR INFO.

IAF
68°54.98' N
019°10.76' E



MSA BAR 25 NM



NOTE: REMAIN WITHIN BAR 25 DME.

MISSED APPROACH MINIMUM CLIMB RATE:

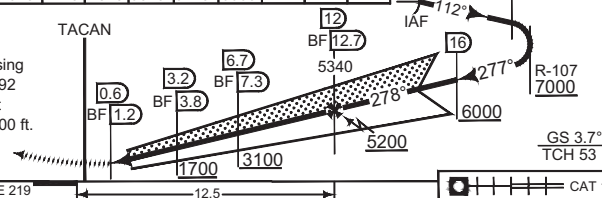
GS (kt)	60	120	180	240	300	360
V/V (fpm)	370	730	1100	1460	1830	2190

SAFE ALT 100 NM 8900

DME	1	2	3	4	5	6	7	8	9	10	11	12	FL 120	TA 7000
ALT BAR	890	1280	1680	2080	2480	2890	3290	3700	4110	4520	4930	-	15	20
ALT BF	-	1010	1410	1810	2210	2610	3020	3420	3830	4240	4650	5060	15	20

MISSED APPROACH

Climb straight ahead. Passing 1000 ft, intercept BAR R-292 outbound. Enter holding at BAR 17 DME. Climb to 5100 ft.



TDZE 219

CAT 1

MIPS	CATEGORY	HPMA
	S-ILS 28	636 - 1200 417 (500 - 1.2/1.9)
	S-LOC 28	820 - 2100 601 (700 - 2.1/2.8)
● CIRCLING		1860 - 5.0 1603 (1700 - 5.0)

HPMA ILS or LOC RWY 28

69°03.35' N
018°32.42' E

BARDUFOSS (ENDU)

CHANGES/ELEVATION

RNO/AE 26 JAN 2023

MIPS INSTRUMENT APPROACH CHART

AD ELEV 254

ILS M or LOC M RWY 28 BARDUFOSS (ENDU)

ATIS 129.725	BARDUFOSS APP 118.800 125.850 275.300 397.375			BARDUFOSS TWR 118.100 280.700			
LOCALIZER/DME BF 108.700 / CH 81X	APP COURSE 278°	GS INTCP ALT 5200	GS 3.7°	DA SEE CAT	TDZE 219	ALS 1340 m	LDA 8015

NOTE:

● CIRCLING CAT D AND E NOT AUTHORIZED SOUTH OF RWY.

b) DME FROM BAR UNLESS OTHERWISE INDICATED.

c) DME REQUIRED.

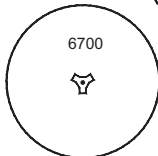
d) LOC OFFSET 2° NORTH.

e) LOC INTRC RADIAL AND LOC COURSE DIFFERS 1°.

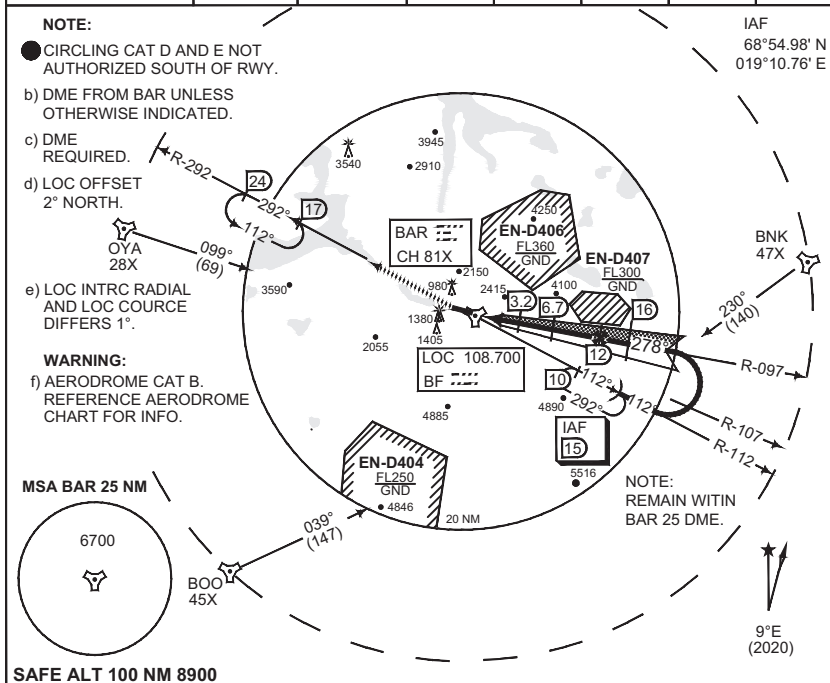
WARNING:

f) AERODROME CAT B. REFERENCE AERODROME CHART FOR INFO.

MSA BAR 25 NM



IAF
68°54.98' N
019°10.76' E

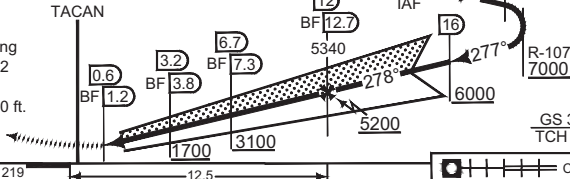


SAFE ALT 100 NM 8900

DME	1	2	3	4	5	6	7	8	9	10	11	12	FL 120	TA 7000
ALT BAR	890	1280	1680	2080	2480	2890	3290	3700	4110	4520	4930	-	15	20
ALT BF	-	1010	1410	1810	2210	2610	3020	3420	3830	4240	4650	5060	15	20

MISSED APPROACH

Climb straight ahead. Passing 1000 ft, intercept BAR R-292 outbound. Enter holding at BAR 17 DME. Climb to 5100 ft.



CATEGORY	C		D		E	
	ILS	LOC	ILS	LOC	ILS	LOC
S-ILS 28	873 - 2300 654 (700 - 2.3/3.0)		886 - 2400 667 (700 - 2.4/3.1)		911 - 2.5 692 (700 - 3.2)	
S-LOC 28	880 - 2400 661 (700 - 2.4/3.1)		890 - 2400 671 (700 - 2.4/3.1)		920 - 2.6 701 (800 - 3.3)	
● CIRCLING	2540 - 5.0 2286 (2300 - 5.0)		2850 - 5.0 2596 (2600 - 5.0)		2950 - 5.0 2696 (2700 - 5.0)	

ILS M or LOC M RWY 28

69°03.35' N
018°32.42' E

BARDUFOSS (ENDU)

CHANGES: ELEVATION MIPS

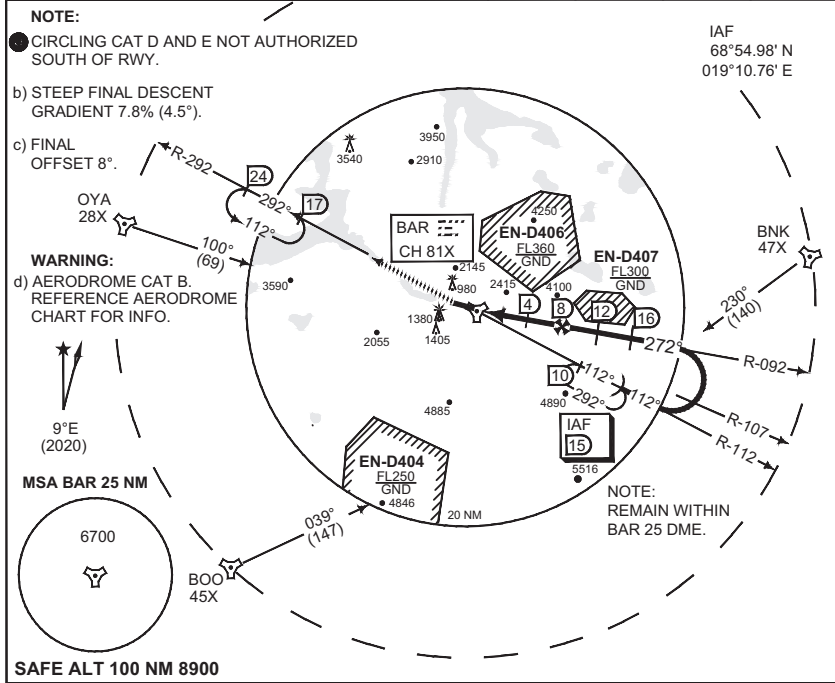
RNO/AF 26 JAN 2023

MIPS INSTRUMENT APPROACH CHART

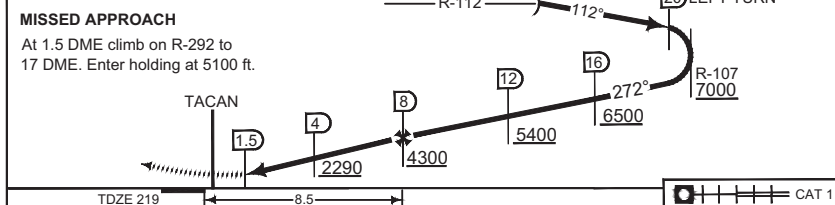
AD ELEV 254

**TACAN RWY 28
BARDUFOSS (ENDU)**

ATIS 129.725	BARDUFOSS APP 118.800 125.850 275.300 397.375			BARDUFOSS TWR 118.100 280.700			
TACAN BAR CH 81X	APP COURSE 272°	FAF ALT 4300	Descent GR 7.8% (4.5°)	MDA 1240	TDZE 219	ALS 1340 m	LDA 8015



DME BAR	2	3	4	5	6	7	TA 7000
ALT	1460	1930	2410	2880	3360	3830	



CATEGORY	C	D	E
S-TAC 28		1240 - 4.1 1021 (1100 - 4.9)	
● CIRCLING	2540 - 5.0 2286 (2300 - 5.0)	2850 - 5.0 2596 (2600 - 5.0)	2950 - 5.0 2696 (2700 - 5.0)

TACAN RWY 28 69°03.35' N
018°32.42' E **BARDUFOSS (ENDU)**

CHANGES: ELEVATION MIPS

RNOCAF 28 JAN 2023

AERODROME CHART

EVENES (ENEV)



ARP
68°29.33' N
016°40.70' E

ELEV 85

RWY	PCN	TORA	ASDA	TODA	LDA	PAPI	THR ELEV	THR PSN
17	65 F/A/W/U	9225	9225	10144	8917	3.4°	82	68°30.18' N - 016°40.61' E
35	65 F/A/W/U	9225	9225	10006	9028	3.5°	81	68°28.76' N - 016°40.77' E

ATIS	126.025			
EVENES TWR	118.000	120.100	308.775	257.800
DE-ICE	131.780			

CHANGES: EDITORIAL

RNOAF 16 JUN 2022

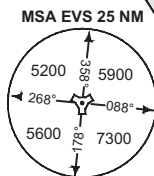
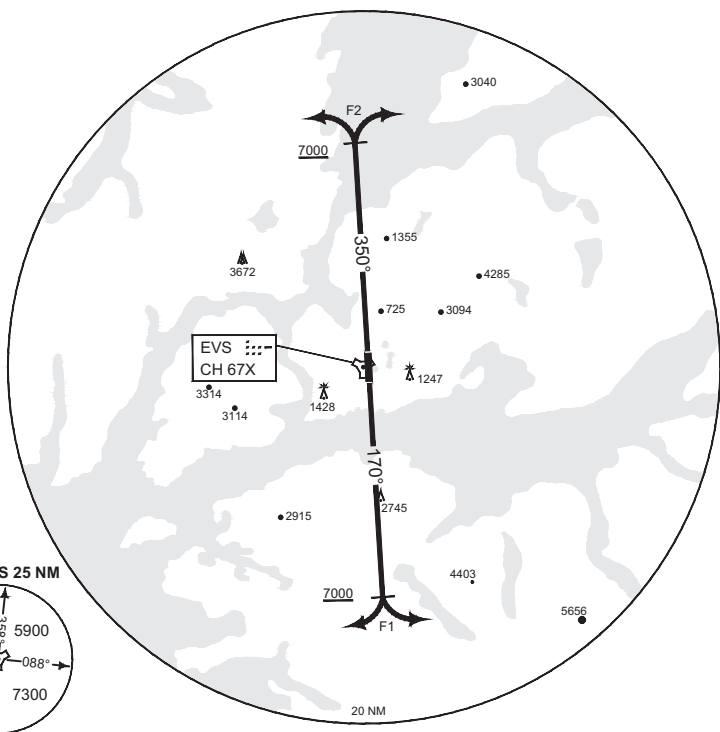
AERODROME CHART

EVENES (ENEV)

**MIPS
INSTRUMENT DEPARTURE CHART**

**HPMA SID RWY 17 / 35
EVENES (ENEV)**

ATIS 126.025	EVENES TWR 118.000 120.100 308.775 257.800				EVENES APP 120.100 369.325					POLARIS CONTROL 126.450 278.050		
AD ELEV 85	RWY 17 / 35	MIN CLIMB 8.75%	GS (kt) 5.0°	V/V (fpm)	60	120	180	240	300	360	to	reason
					540	1070	1600	2130	2660	3190	7000	HPMA



EMERG SAFE ALT 100 NM 9000 **TA 7000**

HPMA F1 (RWY 17)	- Climb track 170°. Passing 7000 ft turn according to ATC clearance, and continue climb to FL 090. - Maximum 450 KIAS.
---------------------	---

HPMA F2 (RWY 35)	- Climb track 350°. Passing 7000 ft turn according to ATC clearance, and continue climb to FL 090. - Maximum 450 KIAS.
---------------------	---

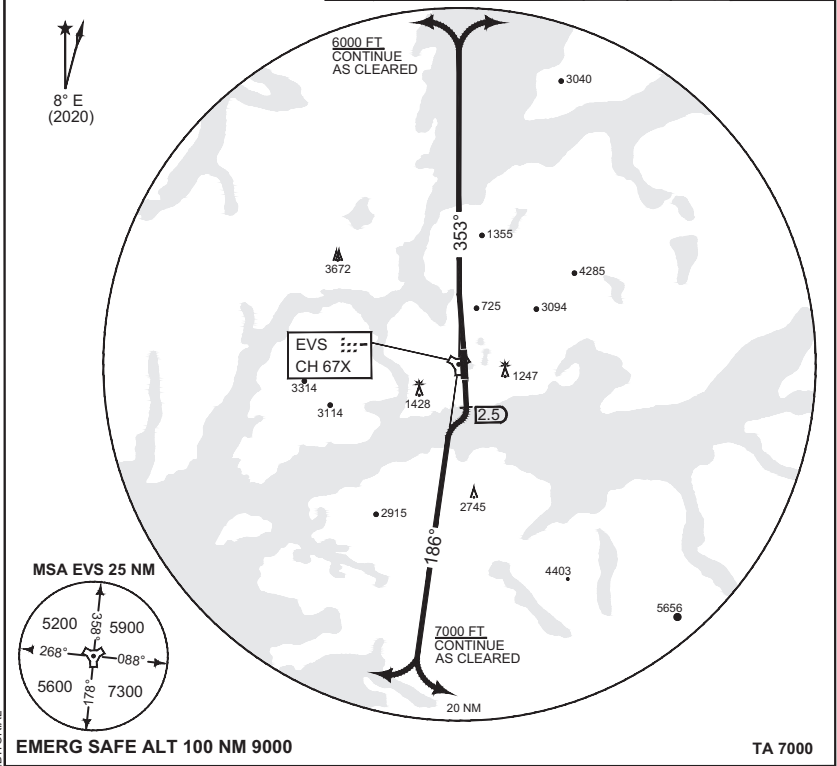
CHANGES: EDITORIAL.

RND/AF 18 APR 2024

**MIPS
INSTRUMENT DEPARTURE CHART**

**TACAN SID RWY 17 / 35
EVENES (ENEV)**

ATIS 126.025	EVENES TWR 120.100 308.775 257.800			EVENES APP 120.100 369.325			POLARIS CONTROL 126.450 278.050			
	AD ELEV 85	RWY 17	GS (kt) V/V (fpm)	FROM-TO DER-3500	60	120	180	240	300	REASON
		35	V/V (fpm)	DER-1000	340	680	1020	1370	1710	TERRAIN
			V/V (fpm)	1000-1800	230	450	680	900	1130	



EMERG SAFE ALT 100 NM 9000		TA 7000
RWY 17	<ul style="list-style-type: none"> - Climb to FL 90. Maximum 300 KIAS. - Minimum climb gradient 6.8% (3.9°) to 3500 ft. - Climb straight ahead to EVS 2.5 DME, then turn right to intercept EVS R-186 outbound. - Climb to 7000 ft before turning according to ATC clearance. 	
RWY 35	<ul style="list-style-type: none"> - Climb to FL 90. Maximum 300 KIAS. - Minimum climb gradient 5.6% (3.2°) to 1000 ft, then 3.7% (2.2°) to 1800 ft. - Climb straight ahead and intercept EVS R-353 outbound. - Climb to 6000 ft before turning according to ATC clearance. 	

CHANGES: MAGVAR, CLIMB TABLE, OBSTACLES, EDITORIAL

RNOAF 09 SEP 2021

MIPS
INSTRUMENT APPROACH CHART

AD ELEV 85

HPMA TACAN RWY 17
EVENES (ENEV)

ATIS 126.025	EVENES APPROACH 120.100 369.325		118.000 120.100		EVENES TOWER 308.775 257.800		
TACAN EVS CH 67X	APP COURSE 173°	FAF ALT 2400	Descent GR 3.4°	MDA 1010	THR ELEV 82	ALS 720 m	LDA 8917

CAUTION:

a) FINAL OFFSET 3° EAST OF RWY CENTERLINE.

● CIRCLING NOT AUTHORIZED EAST OF RWY.

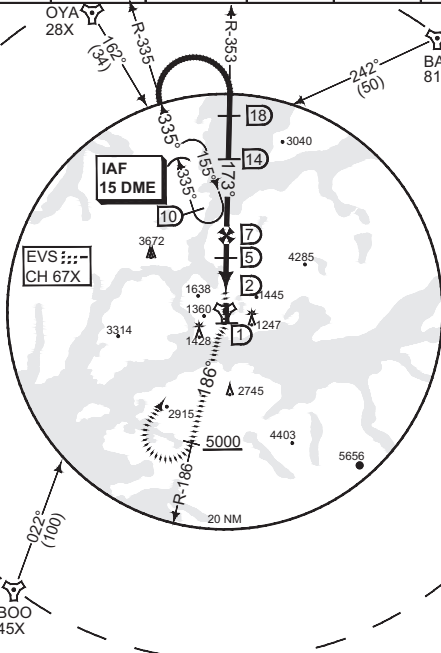
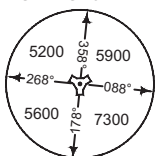
NOTE:

c) VSS PENETRATED E OF FINAL 2.8 NM FM THR 17.

IAF
68°43.76' N
016°28.47' E

8°E
(2020)

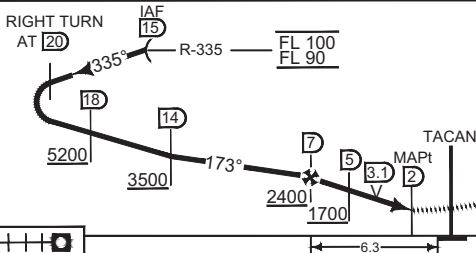
MSA EVS 25 NM



EMERG SAFE ALT 100NM 9000

DME EVS	6	5	4
ALT	2040	1700	1320

TA 7000



MISSED APPROACH

Climb on course 173° to 1 DME after EVS, then intercept R-186 outbound. Passing 5000 ft turn right inbound EVS, climbing to FL 90. Passing EVS proceed outbound on R-335 to IAF.

CAT 1

THR ELEV 82

CATEGORY

HPMA

S-TAC 17

1010 - 4.0 928 (1000 - 4.0/4.8)

● CIRCLING

1990 - 3.2 1905 (2000 - 3.2)

HPMA TACAN RWY 17

68°29.33N
016°40.70E

EVENES (ENEV)

MIPS
INSTRUMENT APPROACH CHART

AD ELEV 85

TACAN RWY 17
EVENES (ENEV)

ATIS 126.025	EVENES APPROACH 120.100 369.325		EVENES TOWER 118.000 120.100 308.775 257.800				
TACAN EVS CH 67X	APP COURSE 173°	FAF ALT 2400	Descent GR 5.9% (3.4°)	MDA SEE CAT	THR ELEV 82	ALS 720 m	LDA 8917

CAUTION:
a) FINAL OFFSET 3° EAST OF RWY CENTERLINE.

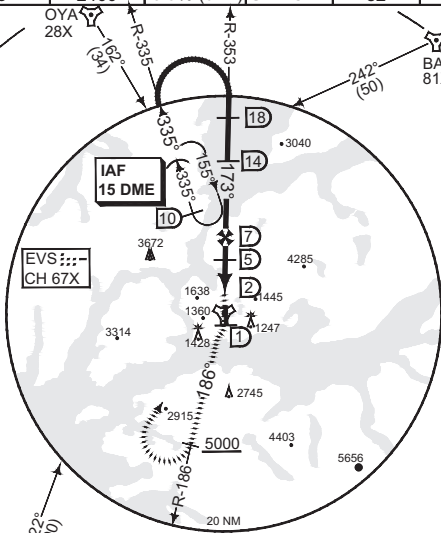
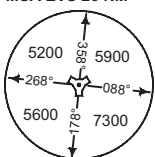
● CIRCLING NOT AUTHORIZED EAST OF RWY.

NOTE:
c) VSS PENETRATED E OF FINAL 2.8 NM FM THR 17.

IAF
68°43.76' N
016°28.47' E



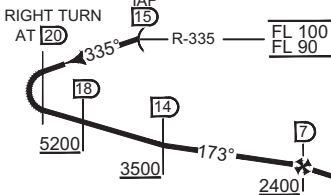
MSA EVS 25 NM



BOO 45X
022° (100)

EMERG SAFE ALT 100NM 9000

DME EVS	6	5	4
ALT	2040	1700	1320



MISSED APPROACH

Climb on course 173° to 1 DME after EVS, then intercept EVS R-186 outbound climbing to FL 90. Passing EVS 10 DME or 5000 ft, whichever occurs first, turn right direct EVS. Passing EVS proceed on R-335 outbound to IAF.

CAT 1

6.3 | THR ELEV 82

CATEGORY	A		B		C		D	
	S-TAC 17 2.5% MA CLMB	1450	- 5.0 1368 (1400 - 5.0/5.0)	1480	- 5.0 1398 (1400 - 5.0/5.0)	1510	- 5.0 1428 (1500 - 5.0/5.0)	1520
S-TAC 17 4.0% MA CLMB	1010	- 1600 928 (1000 - 1.6/2.4)			1010	- 3.6 928 (1000 - 3.6/4.4)	1010	- 4.0 928 (1000 - 4.0/4.8)
● CIRCLING	1450	- 5.0 1365 (1400 - 5.0)	1690	- 5.0 1605 (1600 - 5.0)	2090	- 5.0 2005 (2100 - 5.0)	2140	- 5.0 2055 (2100 - 5.0)

TACAN RWY 17

68°29.33N
016°40.70E

EVENES (ENEV)

CHANGES: MAGVAR, MINIMA, EMERG SAFE, DISTAL/TABLE, OBSTACLES, VDP, THR ELEV, CAUTION, NOTE, EDITORIAL, LAYOUT

RNAIF-04 NOV 2021

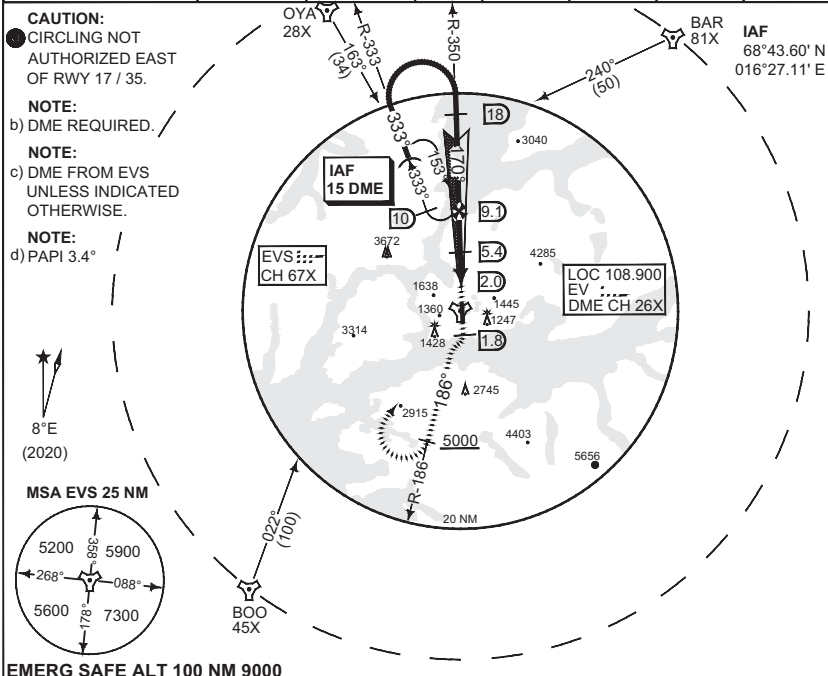
MIPS
INSTRUMENT APPROACH CHART

AD ELEV 85

HPMA ILS or LOC RWY 17
EVENES (ENEV)

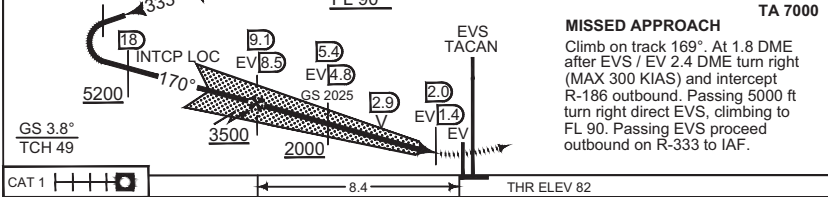
ATIS 126.025	EVENES APPROACH 120.100 369.325		EVENES TOWER 118.000 120.100 308.775 257.800				
-----------------	------------------------------------	--	---	--	--	--	--

LOCALIZER/DME EV 108.900 / CH 26X	APP COURSE 170°	GS INTCP ALT 3500	GS 3.8°	DA 303	THR ELEV 82	ALS 720 m	LDA 8917
--------------------------------------	--------------------	----------------------	------------	-----------	----------------	--------------	-------------



EMERG SAFE ALT 100 NM 9000

	DME	8	7	6	5	4	3	2
	ALT EVS	3120	2700	2290	1880	1470	1060	650
	ALT EV	3360	2940	2520	2110	1700	1290	880



CAT 1	HPMA
CATEGORY	HPMA
S-ILS 17	303 - 800 221 (300 - 0.8/1.6)
S-LOC 17	1010 - 4.0 928 (1300 - 4.0/4.8)
● CIRCLING	1990 - 3.2 1906 (2000 - 3.2)

HPMA ILS or LOC RWY 17

68°29.33N
016°40.70E

EVENES (ENEV)

CHANGES: MAGVAR, DISTALT TABLE, EDITORIAL

RNAIF 09 SEP 2021

MIPS
INSTRUMENT APPROACH CHART

AD ELEV 85

ILS M or LOC M RWY 17
EVENES (ENEV)

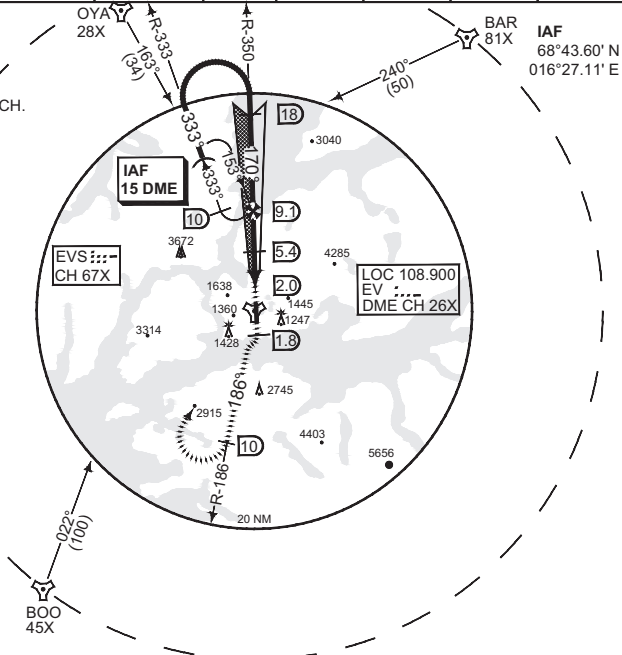
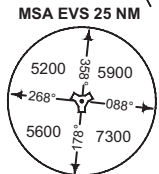
ATIS 126.025	EVENES APPROACH 120.100 369.325		EVENES TOWER 118.000 120.100 308.775 257.800				
LOCALIZER/DME EV 108.900 / CH 26X	APP COURSE 170°	GS INTCP ALT 3500	GS 3.8°	DA SEE CAT	THR ELEV 82	ALS 720 m	LDA 8917

CAUTION:

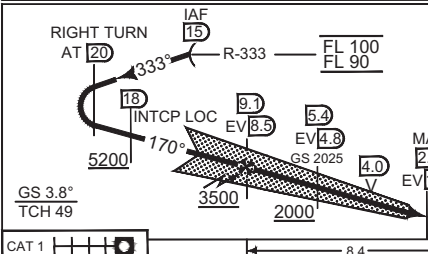
- a) CIRCLING NOT AUTHORIZED EAST OF RWY 17 / 35.
- b) STEEP FINAL APPROACH.

NOTE:

- c) DME REQUIRED.
- d) DME FROM EVS UNLESS INDICATED OTHERWISE.
- e) PAPI 3.4°



EMERG SAFE ALT 100 NM 9000



DME	8	7	6	5	4	3	2
ALT EVS	3120	2700	2290	1880	1470	1060	650
ALT EV	3360	2940	2520	2110	1700	1290	880

MISSED APPROACH TA 7000

Climb on track 169°. At 1.8 DME after EVS / EV 2.4 DME turn right (max 185 kt) and intercept R-186 outbound climbing to FL 90. Passing 5000 ft or EVS 10 DME, whichever occurs first, turn right direct EVS. Passing EVS proceed on R-333 outbound to IAF.

CAT 1	8.4			THR ELEV 82
-------	-----	--	--	-------------

CATEGORY	A	B	C	D
	S-ILS 17	1345 - 5.0 1263 (1300 - 5.0/5.0)	1363 - 5.0 1281 (1300 - 5.0/5.0)	1375 - 5.0 1293 (1300 - 5.0/5.0)
2.5% MA CLMB				
S-ILS 17	352 - 600 270 (300 - 0.8/1.3)	371 - 650 289 (300 - 0.8/1.4)	383 - 700 301 (400 - 0.8/1.4)	398 - 750 316 (400 - 0.8/1.4)
5.0% MA CLMB				
S-LOC 17	1480 - 5.0 1398 (1400 - 5.0/5.0)	1500 - 5.0 1418 (1500 - 5.0/5.0)	1530 - 5.0 1448 (1500 - 5.0/5.0)	1540 - 5.0 1458 (1500 - 5.0/5.0)
2.5% MA CLMB				
CIRCLING	1480 - 5.0 1395 (1400 - 5.0)	1690 - 5.0 1605 (1700 - 5.0)	2090 - 5.0 2005 (2100 - 5.0)	2140 - 5.0 2055 (2100 - 5.0)

ILS M or LOC M RWY 17

68°29.33N
016°40.70E

EVENES (ENEV)

CHANGES: MINIMA

RNAIF 24 FEB 2022

MIPS
INSTRUMENT APPROACH CHART

AD ELEV 85

HPMA TACAN RWY 35
EVENES (ENEV)

ATIS 126.025	EVENES APPROACH 120.100 369.325		EVENES TOWER 118.000 120.100 308.775 257.800				
TACAN EVS CH 67X	APP COURSE 347°	FAF ALT 3300	Descent GR ● 4.8°	MDA 740	THR ELEV 81	ALS 600 m	LDA 9028

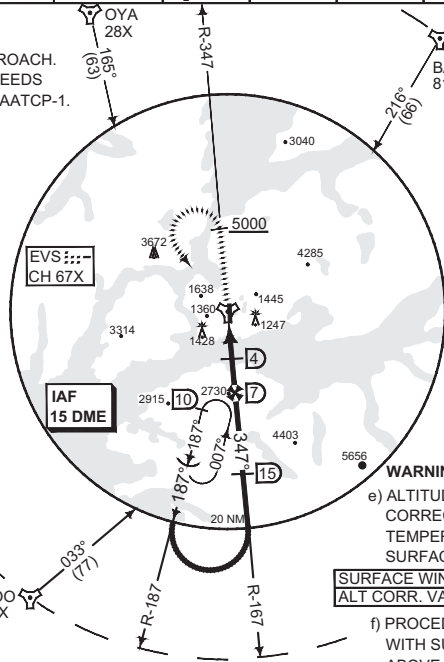
WARNING:

● VERY STEEP FINAL APPROACH.
DECENT GRADIENT EXCEEDS
MAXIMUM SPECIFIED IN AATCP-1.

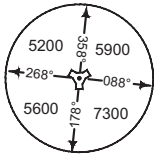
CAUTION:

- CIRCLING NOT AUTHORIZED EAST OF RWY 35 / 17.
- c) DO NOT USE PAPI RWY 35 OUTSIDE 5 NM.
- d) FINAL OFFSET 3° EAST.

IAF 68°15.04' N
016°30.08' E



MSA EVS 25 NM



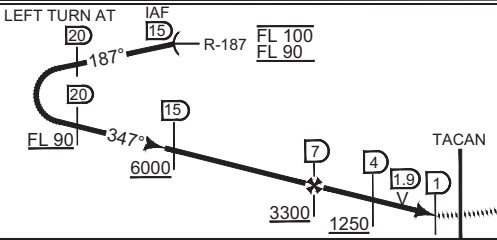
WARNING:

e) ALTITUDES MUST BE CORRECTED FOR LOW TEMPERATURE AND HIGH SURFACE WIND VELOCITY.

SURFACE WIND (kts)	20	40	60
ALT CORR. VALUE	50	200	450

f) PROCEDURE NOT AUTH. WITH SURFACE WIND ABOVE 60 KTS.

SAFE ALT 100NM 9000



DME EVS	6	5	4	3	2
ALT	2800	2290	1790	1280	780

TA 7000

MISSED APPROACH

Climb straight ahead to EVS and track R-347 outbound. Passing 5000 ft turn left inbound EVS, climbing to FL 90. Passing EVS proceed outbound on R-187 and enter holding at IAF.

CATEGORY	HPMA
● S-TAC 35	740 - 2600 659 (700 - 2.6/3.0)
● CIRCLING	1990 - 3.2 1905 (2000 - 3.2)

HPMA TACAN RWY 35

68°29.33N
016°40.70E

EVENES (ENEV)

CHANGES: NEW PROCEDURE

RNG/AF 16 JUN 2022

MIPS
INSTRUMENT APPROACH CHART

AD ELEV 85

HPMA TACAN A
EVENES (ENEV)

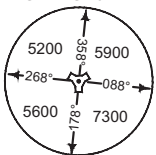
ATIS 126.025	EVENES APPROACH 120.100 369.325		EVENES TOWER 118.000 120.100 308.775 257.800			
TACAN EVS CH 67X	APP COURSE 004°	FAF ALT 4300	MDA 1990			

CAUTION:

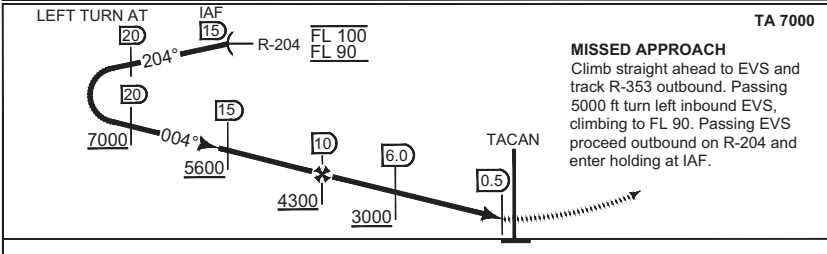
- CIRCLING NOT AUTHORIZED EAST OF RWY 35 / 17.
- b) DO NOT USE PAPI RWY 35 OUTSIDE 5 NM.



MSA EVS 25 NM



SAFE ALT 100NM 9000



CATEGORY	HPMA
● CIRCLING	1990 - 3.2 1905 (2000 - 3.2)
MIPS	

HPMA TACAN A

68°29.33N
016°40.70E

EVENES (ENEV)

CHANGES: BOO RADIAL, CAUTION

RNGAF 04 NOV 2021

MIPS
INSTRUMENT APPROACH CHART

AD ELEV 85

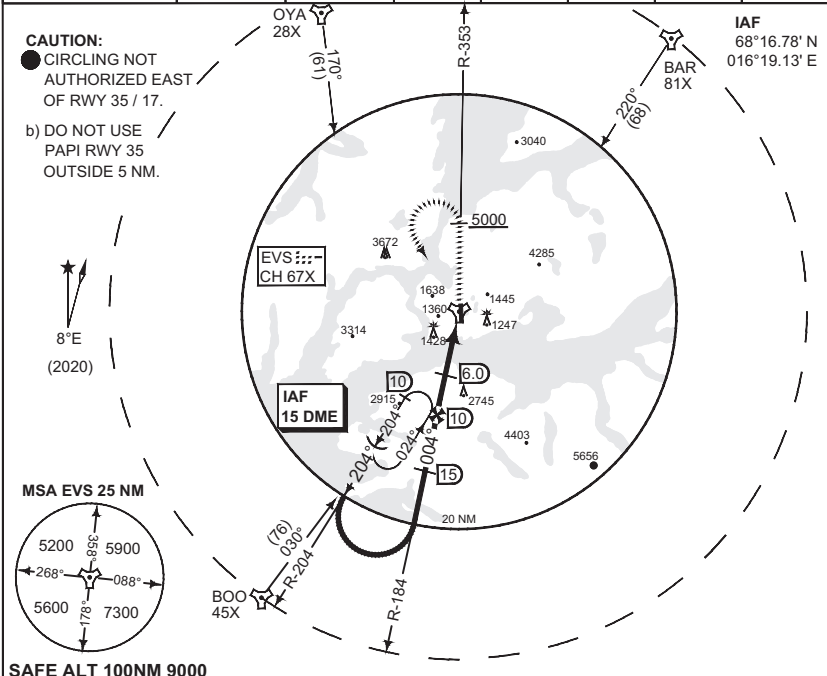
TACAN A
EVENES (ENEV)

ATIS 126.025	EVENES APPROACH 120.100 369.325		EVENES TOWER 118.000 120.100 308.775 257.800		
TACAN EVS CH 67X	APP COURSE 004°	FAF ALT 4300	MDA SEE CAT		

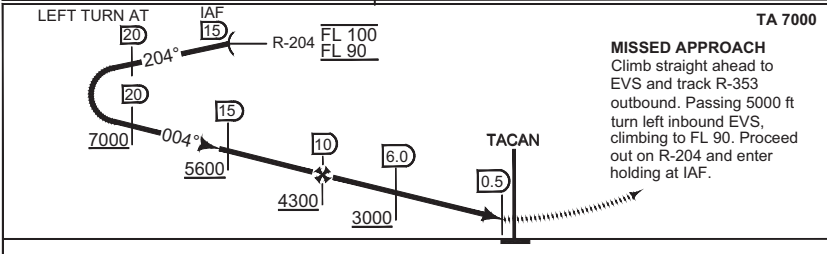
CAUTION:

● CIRCLING NOT AUTHORIZED EAST OF RWY 35 / 17.

b) DO NOT USE PAPI RWY 35 OUTSIDE 5 NM.



SAFE ALT 100NM 9000



MISSED APPROACH

Climb straight ahead to 5000 ft and track R-353 outbound. Passing 5000 ft turn left inbound EVS, climbing to FL 90. Proceed out on R-204 and enter holding at IAF.

CATEGORY	A	B	C	D
● CIRCLING	1130 - 1.9 1045 (1100 - 1.9)	1690 - 2.8 1605 (1700 - 2.8)	2090 - 3.7 2005 (2100 - 3.7)	2140 - 4.6 2055 (2100 - 4.6)

TACAN A

68°29.33N
016°40.70E

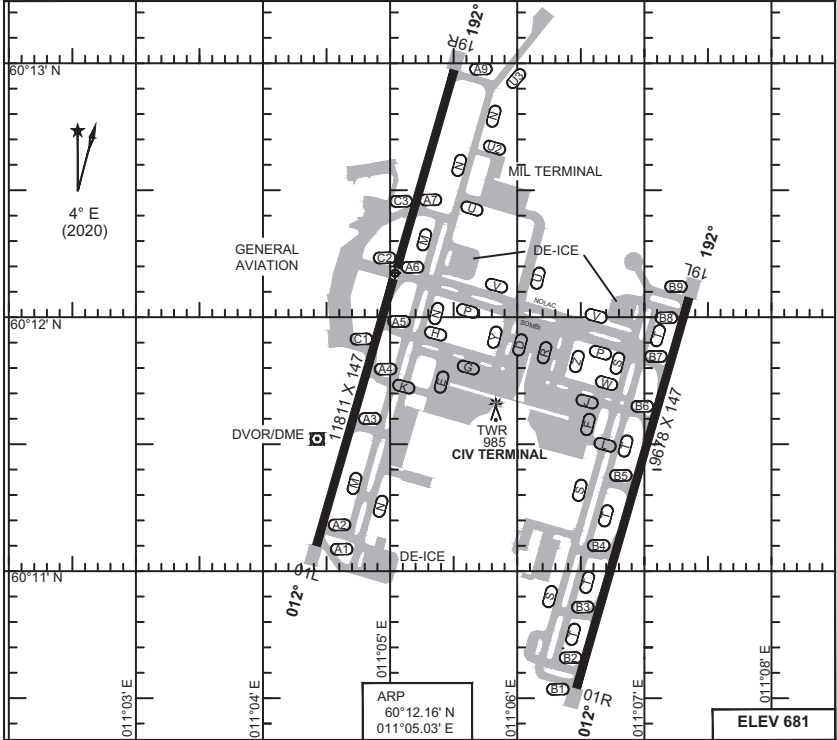
EVENES (ENEV)

CHANGES: MAGVAR, PLAN VIEW, PROFILE VIEW, MISSED APPR, MINIMA, EDITORIAL.

RNGAIF-04 NOV 2021

AERODROME CHART

GARDERMOEN (ENGM)



RWY	PCN	TORA	ASDA	TODA	LDA	PAPI	ALS	TDZE	THR PSN
01L	75 F/A/W/T	11811	11811	11811	11811	3.0°	BP	656	60°11.10' N - 011°04.42' E
19R	75 F/A/W/T	11811	11811	11811	11811	3.0°	BN	675	60°12.60' N - 011°05.50' E
01R	75 F/A/W/T	9678	9678	9678	9678	3.0°	BN	670	60°10.55' N - 011°06.47' E
19L	75 F/A/W/T	9678	9678	10990	9678	3.0°	BP	681	60°12.07' N - 011°07.35' E

ATIS - DEP 127.150
 ATIS - ARR 126.125
 GARDERMOEN DELIVERY DLV WEST 121.680
 DLV EAST 121.930
 GARDERMOEN GROUND GND WEST 121.605 337.975
 GND EAST 121.905 337.975
 DE-ICE COORDINATOR 121.855
 GARDERMOEN TOWER SECTOR WEST INCL ILS 01L/19R 118.300 257.800
 SECTOR EAST INCL ILS 01R/19L 120.100 257.800
 GARDERMOEN OPS (MIL) 123.275 362.800

CHANGES: MAGVAR, RWY COURSES: FRQ. EDITORIAL

RNOA/F 25 MAR 2021

AERODROME CHART

GARDERMOEN (ENGM)

MIPS
INSTRUMENT APPROACH CHART

AD ELEV 681

HPMA ILS or LOC RWY 01L
GARDERMOEN (ENGM)

ATIS	OSLO APP	DIRECTOR	FINAL	GARDERMOEN TWR		GROUND	
126.125	W 120.450 E 118.475	136.400	128.900	W 118.300 E 120.100	W 121.605	E 121.905	
LOCALIZER/DME		APP COURSE	GS INTCP ALT	GS	DA	THR ELEV	ALS LDA
OBW 110.300 / CH40X		012°	3500	3.0°	856	656	670 m 11811

CAUTION:

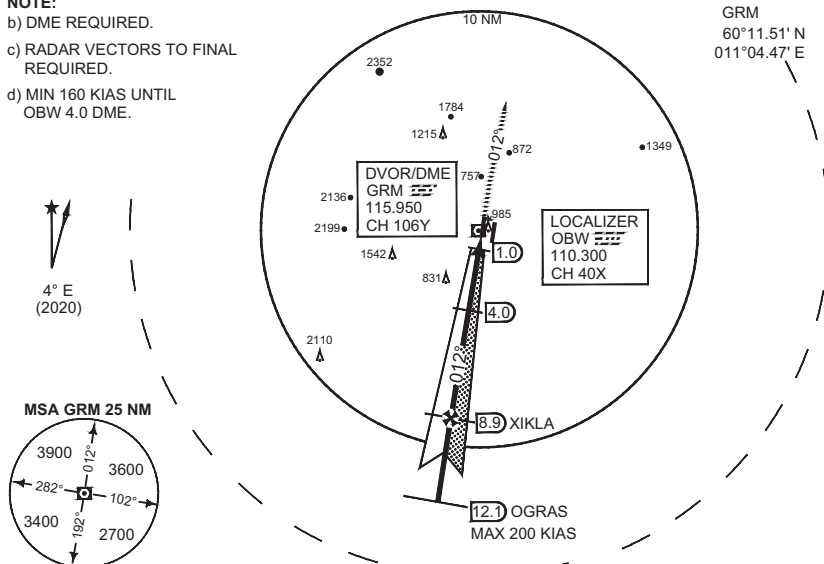
- CIRCLING NOT AUTHORIZED EAST OF RWY 01L / 19R.

NOTE:

- b) DME REQUIRED.
- c) RADAR VECTORS TO FINAL REQUIRED.
- d) MIN 160 KIAS UNTIL OBW 4.0 DME.

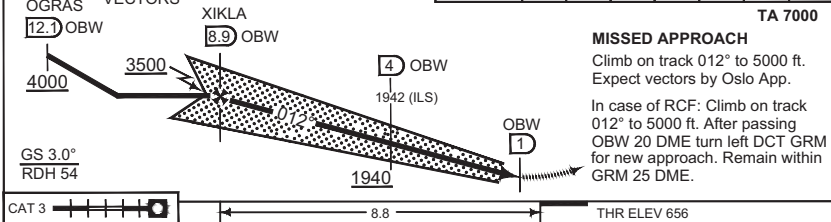
OGRAS
59°59.62' N
010°57.85' E

GRM
60°11.51' N
011°04.47' E



SAFE ALT 100 NM 9700

	DME OBW	8	7	6	5	4	3	2
	ALT	3210	2890	2570	2250	1940	1620	1300



CAT 3 8.8 THR ELEV 656

	CATEGORY	HPMA
MIPS	S-ILS 01L	856 -800 200 (200-0.8/1.2)
	S-LOC 01L	960 -1200 304 (400-1.2/1.6)
	● CIRCLING	2040 -3.2 1359 (1400-3.2)

HPMA ILS or LOC RWY 01L 60°12.16' N
011°05.03' E **GARDERMOEN (ENGM)**

CHANGES: MSA

FRNOAF 16 JUN 2022

MIPS INSTRUMENT APPROACH CHART

AD ELEV 681

HPMA ILS or LOC RWY 01R GARDERMOEN (ENGM)

ATIS	OSLO APP	DIRECTOR	FINAL	GARDERMOEN TWR		GROUND	
126.125	W 120.450 E 118.475	136.400	128.900	W 118.300 E 120.100	W 121.605 E 121.905		
LOCALIZER/DME		APP COURSE	GS INTCP ALT	GS	DA	THR ELEV	ALS LDA
ONE 111.950 / CH56Y		012°	3500	3.0°	880	670	880 m 9678

CAUTION:

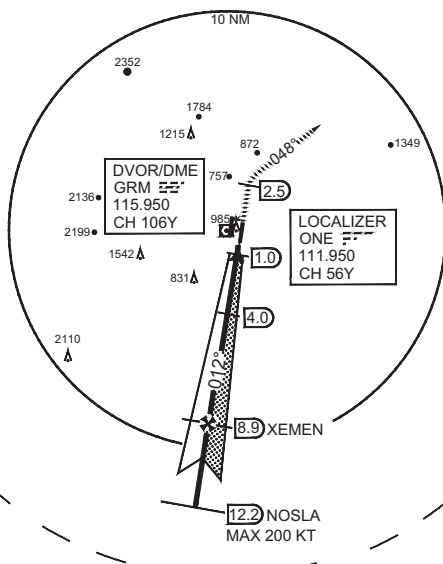
● CIRCLING NOT AUTHORIZED WEST OF RWY 01R / 19L.

NOTE:

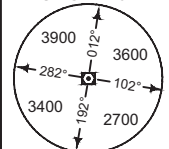
- b) DME REQUIRED.
- c) RADAR VECTORS TO FINAL REQUIRED.
- d) MIN 160 KIAS UNTIL ONE 4.0 DME.

NOSLA
59°59.02' N
010°59.85' E

GRM
60°11.51' N
011°04.47' E

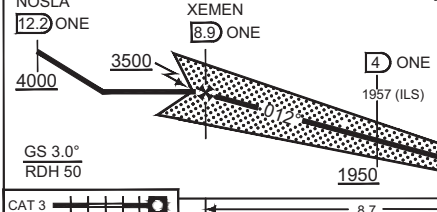


MSA GRM 25 NM



SAFE ALT 100 NM 9700

RADAR VECTORS	DME ONE	8	7	6	5	4	3	2
	ALT	3220	2900	2590	2270	1950	1630	1310



MISSED APPROACH TA 7000
Climb on track 012° to DME 2.5 after ONE. Turn right (MAX 265 KIAS) and proceed on HDG 048° to 4000 ft. Expect vectors.

In case of RCF: Climb to 4000 ft on HDG 048°. After passing ONE 20 DME turn right DCT GRM for new approach. Remain within GRM 25 DME.

CAT 3 8.7 THR ELEV 670

MIPS	CATEGORY	HPMA
	S-ILS 01R	880 - 800 210 (300-0.8/1.2)
	S-LOC 01R	970 - 1200 300 (300-1.2/1.6)
● CIRCLING	1570 - 3.2 889 (900-3.2)	

HPMA ILS or LOC RWY 01R 60°12.16' N 011°05.03' E **GARDERMOEN (ENGM)**

CHANGES: MSA

RNOAF 16 JUN 2022

MIPS INSTRUMENT APPROACH CHART

AD ELEV 681

HPMA ILS or LOC RWY 19L GARDERMOEN (ENGM)

ATIS	OSLO APP	DIRECTOR	FINAL	GARDERMOEN TWR		GROUND	
126.125	W 120.450 E 118.475	136.400	128.900	W 118.300	E 120.100	W 121.605	E 121.905
LOCALIZER/DME	APP COURSE	GS INTCP ALT	GS	DA	THR ELEV	ALS	LDA
GME 110.550 / CH 42Y	192°	3500	3.0°	881	681	900 m	9678

CAUTION:

● CIRCLING NOT AUTHORIZED WEST OF RWY 19L / 01R.

NOTE:

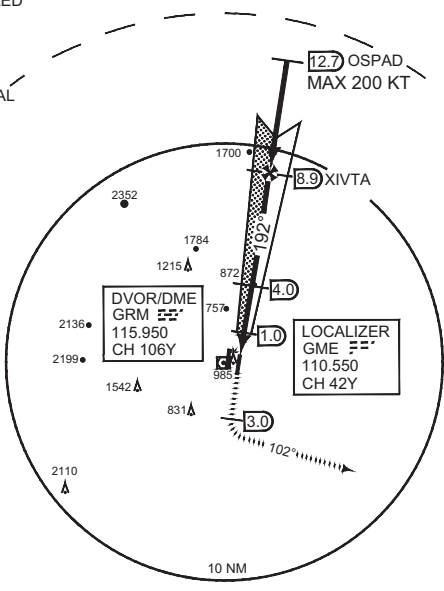
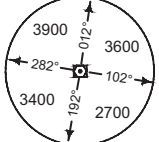
- b) DME REQUIRED.
- c) RADAR VECTORS TO FINAL REQUIRED.
- d) MIN 160 KIAS UNTIL GME 4.0 DME.

OSPAD
60°24.06' N
011°14.32' E

GRM
60°11.51' N
011°04.47' E



MSA GRM 25 NM



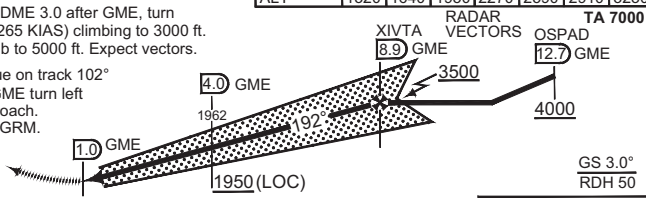
SAFE ALT 100 NM 9700

MISSED APPROACH

Climb on track 192°. At DME 3.0 after GME, turn left to track 102° (MAX 265 KIAS) climbing to 3000 ft. At DME 13.0 GME, climb to 5000 ft. Expect vectors.

In case of RCF: Continue on track 102° to 5000 ft. At DME 20 GME turn left DCT GRM for new approach. Remain within DME 25 GRM.

DME GME	2	3	4	5	6	7	8
ALT	1320	1640	1950	2270	2590	2910	3230



THR ELEV 681

8.7



CATEGORY	HPMA	
S-ILS 19L	881	- 800 200 (200-0.8/1.2)
S-LOC 19L	1030	- 1200 349 (400-1.2/1.6)
● CIRCLING	1570	- 3.2 889 (900-3.2)

HPMA ILS or LOC RWY 19L

60°12.16' N
011°05.03' E

GARDERMOEN (ENGM)

CHANGES: MSA

RNOAF 16 JUN 2022

MIPS INSTRUMENT APPROACH CHART

HPMA ILS or LOC RWY 19R GARDERMOEN (ENGM)

AD ELEV 681

ATIS	OSLO APP	DIRECTOR	FINAL	GARDERMOEN TWR		GROUND	
126.125	W 120.450 E 118.475	136.400	128.900	W 118.300 E 120.100	W 121.605	E 121.905	
LOCALIZER/DME		APP COURSE	GS INTCP ALT	GS	DA	THR ELEV	ALS LDA
GSW 111.300 / CH 50X		192°	3500	3.0°	875	675	900 m 11811

CAUTION:

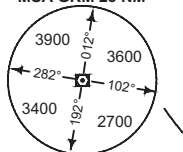
● CIRCLING NOT AUTHORIZED EAST OF RWY 19R / 01L.

NOTE:

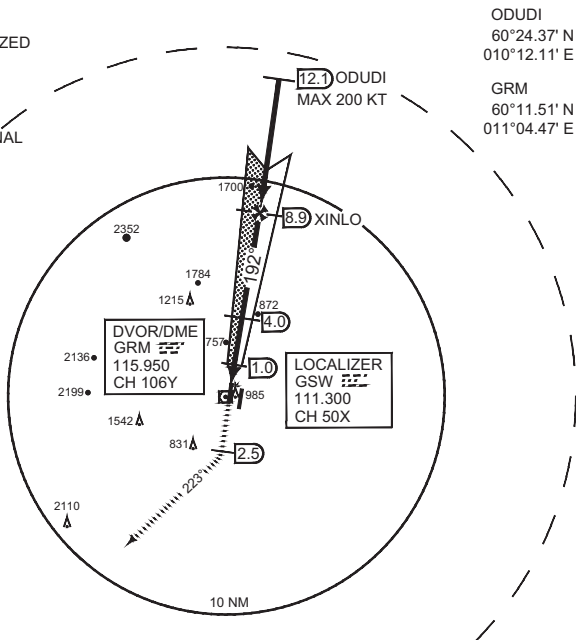
- b) DME REQUIRED.
- c) RADAR VECTORS TO FINAL REQUIRED.
- d) MIN 160 KIAS UNTIL GSW 4.0 DME.



MSA GRM 25 NM



SAFE ALT 100 NM 9700



ODUDI
60°24.37' N
010°12.11' E

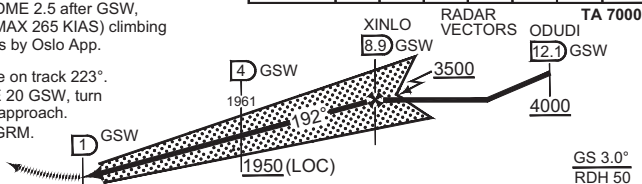
GRM
60°11.51' N
011°04.47' E

MISSED APPROACH

Climb on track 192°. At DME 2.5 after GSW, turn right to track 223° (MAX 265 KIAS) climbing to 5000 ft. Expect vectors by Oslo App.

In case of RCF: Continue on track 223°. Climb to 5000 ft. At DME 20 GSW, turn right DCT GRM for new approach. Remain within DME 25 GRM.

DME GSW	2	3	4	5	6	7	8
ALT	1320	1630	1950	2270	2590	2910	3230



THR ELEV 675

8.7

CAT 3

CATEGORY	HPMA
S-ILS 19R	875 - 800 200 (200-0.8/1.2)
S-LOC 19R	1020 - 1200 345 (400-1.2/2.0)
● CIRCLING	1980 - 3.2 1299 (1300-3.2)

HPMA ILS or LOC RWY 19R

60°12.16' N
011°05.03' E

GARDERMOEN (ENGM)

MIPS
INSTRUMENT DEPARTURE CHART

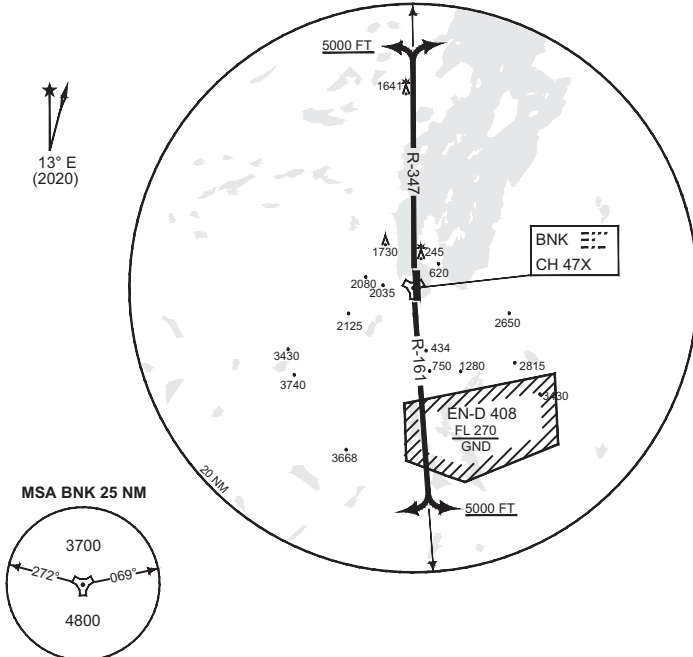
TACAN SID RWY 16 / 34
BANAK (ENNA)

AD ELEV 26

ATIS 136.325	BANAK TWR / APPR 118.900 118.050 122.100 280.350				POLARIS CONTROL 126.700							
RWY 16	MIN CLIMB 4.5%	2.6°	V/V (fpm)	GS (kt)	60	120	180	240	300	360	to	Reason
					280	550	820	1100	1400	1700	1400 ft	TERRAIN

NOTE:

- a) FLUCTUATIONS MAY OCCUR BETWEEN BNK 13 DME AND 17 DME ON R-347.



SAFE ALT 100 NM 7400

TA 7000

RWY 16	<ul style="list-style-type: none"> - Climb on BNK R-161. Passing 5000 ft turn according to ATC clearance, and continue climb to 7000 ft. - Obstacles (164 ft MSL) 0.3 NM after DER must be avoided visually.
RWY 34	<ul style="list-style-type: none"> - Climb on BNK R-347. Passing 5000 ft turn according to ATC clearance, and continue climb to 7000 ft.

CHANGES: MAGVAAR, EDITORIAL

RNOAF-26 JAN 2023

TACAN SID RWY 16 / 34

70°04.00' N
024°58.43' E

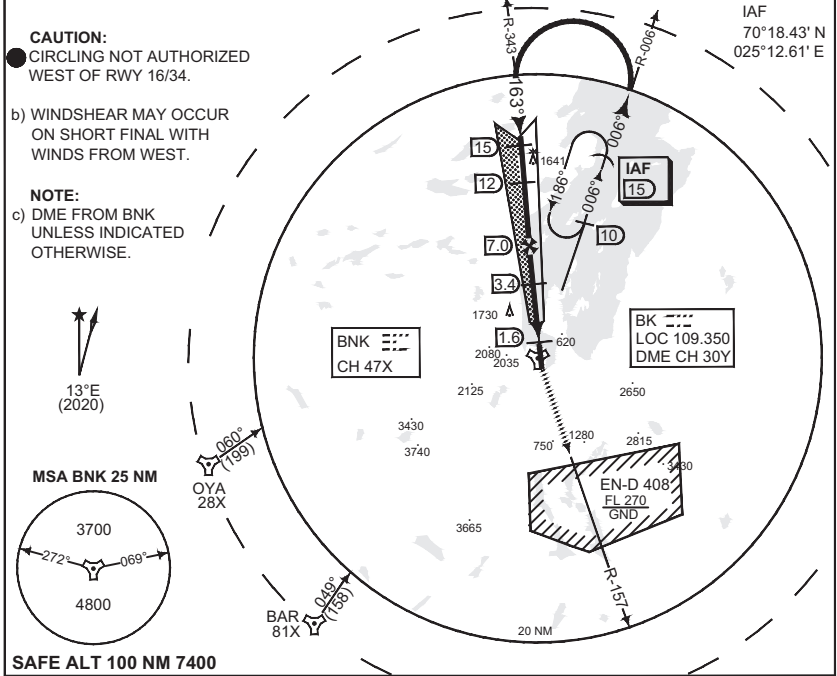
BANAK (ENNA)

MIPS
INSTRUMENT APPROACH CHART

LOC M RWY 16
BANAK (ENNA)

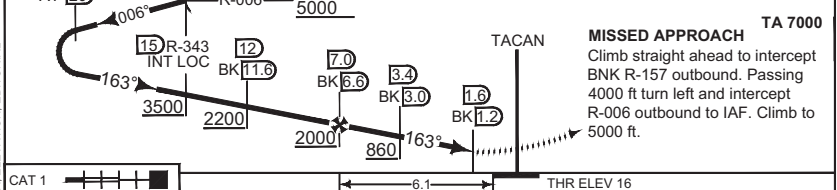
AD ELEV 26

ATIS 136.325		BANAK TWR / APPR 118.900 118.050 122.100 280.350					
LOCALIZER/DME BK 109.350 / CH 30Y	APP COURSE 163°	FAF ALT 2000	Descent GR 5.2% (3.0°)	MDA SEE CAT	THR ELEV 16	ALS 720 m	LDA 8838



SAFE ALT 100 NM 7400

DME	7	6	5	4	3	2
ALT BNK	2000	1690	1370	1050	740	420
ALT BK	-	1810	1500	1180	860	550



CATEGORY	A	B	C	D	E
S-LOC 16 2.5% MA	310 - 750 294 (300 - 0.8/1.4)		330 - 750 314 (400 - 0.8/1.4)	350 - 800 334 (400 - 0.8/1.5)	380 - 1000 364 (400 - 1.0/1.7)
S-LOC 16 3.0% MA	310 - 750 294 (300 - 0.8/1.4)				
● CIRCLING	670 - 1.5 644 (700 - 1.5)	980 - 1.6 954 (1000 - 1.6)	1350 - 2.4 1324 (1400 - 2.4)	2030 - 3.6 2004 (2100 - 3.6)	3180 - 3.6 3154 (3200 - 3.6)

LOC M RWY 16 70°04.00' N 024°58.43' E **BANAK (ENNA)**

CHANGES: MAGVAR, MINIMA, ELEVATION, EDITORIAL

RNOAF 26 JAN 2023

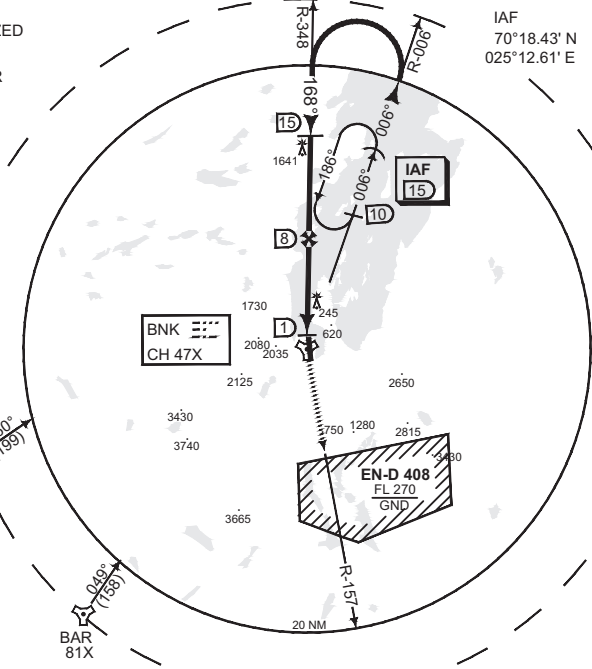
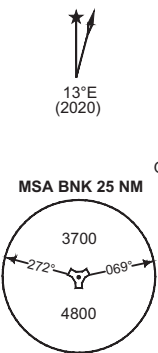
MIPS
INSTRUMENT APPROACH CHART

AD ELEV 26

TACAN RWY 16
BANAK (ENNA)

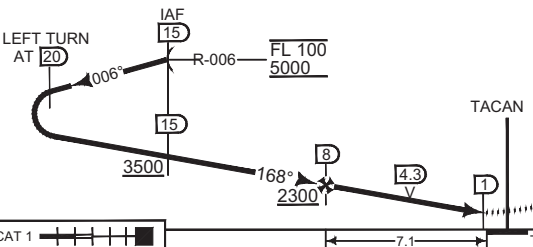
ATIS 136.325		BANAK TWR / APPR 118.900 118.050 122.100 280.350					
TACAN BNK CH 47X	APP COURSE 168°	FAF ALT 2300	Descent GR 5.2% (3.0°)	MDA 1180	THR ELEV 16	ALS 720 m	LDA 8838

- CAUTION:**
- CIRCLING NOT AUTHORIZED WEST OF RWY 16/34.
- b) WINDSHEAR MAY OCCUR ON SHORT FINAL WITH WINDS FROM WEST.
- NOTE:**
- c) FINAL OFFSET 6° EAST.
 - d) FINAL INTERSECTS EXT RWY CENTERLINE 43 M IN FRONT OF THR.



SAFE ALT 100 NM 7400

DME BNK	8	7	6	5
ALT	2300	1990	1680	1360



MISSED APPROACH
Climb and continue to BNK. Then continue on R-157 outbound. Passing 4000 ft turn left and intercept R-006 outbound to IAF. Climb to 5000 ft.

TA 7000

CATEGORY	A	B	C	D	E
----------	---	---	---	---	---

S-TAC 16 **1180 - 4.6 1164 (1200 - 4.6/5.0)**

● CIRCLING	1180 - 5.0 1154 (1200 - 5.0)	1180 - 5.0 1154 (1200 - 5.0)	1350 - 5.0 1324 (1400 - 5.0)	2030 - 5.0 2004 (2100 - 5.0)	3180 - 5.0 3154 (3200 - 5.0)
------------	-------------------------------------	-------------------------------------	-------------------------------------	-------------------------------------	-------------------------------------

TACAN RWY 16

70°04.00' N
024°58.43' E

BANAK (ENNA)

CHANGES: MAGVAR, ELEVATION, EDITORIAL

RNG/AF 26 JAN 2023

MIPS
INSTRUMENT APPROACH CHART

HPMA ILS or LOC RWY 34
BANAK (ENNA)

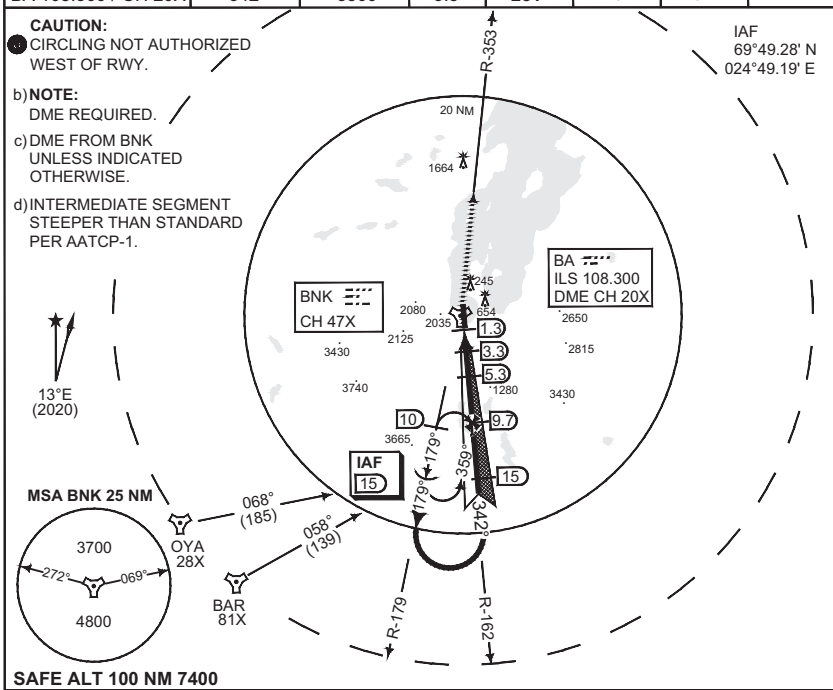
AD ELEV 26

ATIS 136.325		BANAK TWR / APPR 118.900 118.050 122.100 280.350					
LOCALIZER/DME BA 108.300 / CH 20X	APP COURSE 342°	GS INTCP ALT 3500	GS 3.5°	DA 251	THR ELEV 25	ALS 737 m	LDA 8543

CAUTION:
● CIRCLING NOT AUTHORIZED WEST OF RWY.

- b) **NOTE:**
DME REQUIRED.
- c) DME FROM BNK UNLESS INDICATED OTHERWISE.
- d) INTERMEDIATE SEGMENT STEEPER THAN STANDARD PER AATCP-1.

IAF
69°49.28' N
024°49.19' E

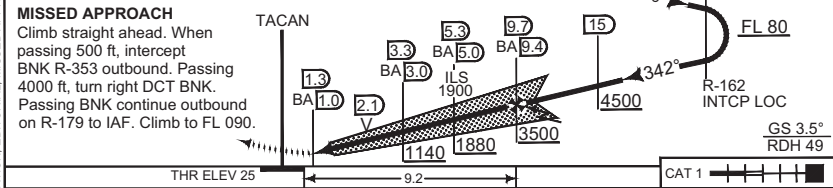


SAFE ALT 100 NM 7400

DME	2	3	4	5	6	7	8	9	IAF (15)	TA 7000
ALT BNK	-	1000	1380	1760	2140	2520	2910	3290	FL 100	LEFT TURN AT 20
ALT BA	760	1130	1510	1890	2270	2660	3040	3430	FL 90 -R-179	FL 80

MISSED APPROACH

Climb straight ahead. When passing 500 ft, intercept BNK R-353 outbound. Passing 4000 ft, turn right DCT BNK. Passing BNK continue outbound on R-179 to IAF. Climb to FL 090.



CATEGORY	HPMA
S-ILS 34	251 - 550 226 (300 - 0.8/1.2)
S-LOC 34	670 - 2300 645 (700 - 2.3/3.0)
● CIRCLING	1100 - 3.2 1074 (1100 - 3.2)

HPMA ILS or LOC RWY 34

70°04.00' N
024°58.43' E

BANAK (ENNA)

CHANGES: MAGVAR, ELEVATION, EDITORIAL, MISSED APPR, MINIMA

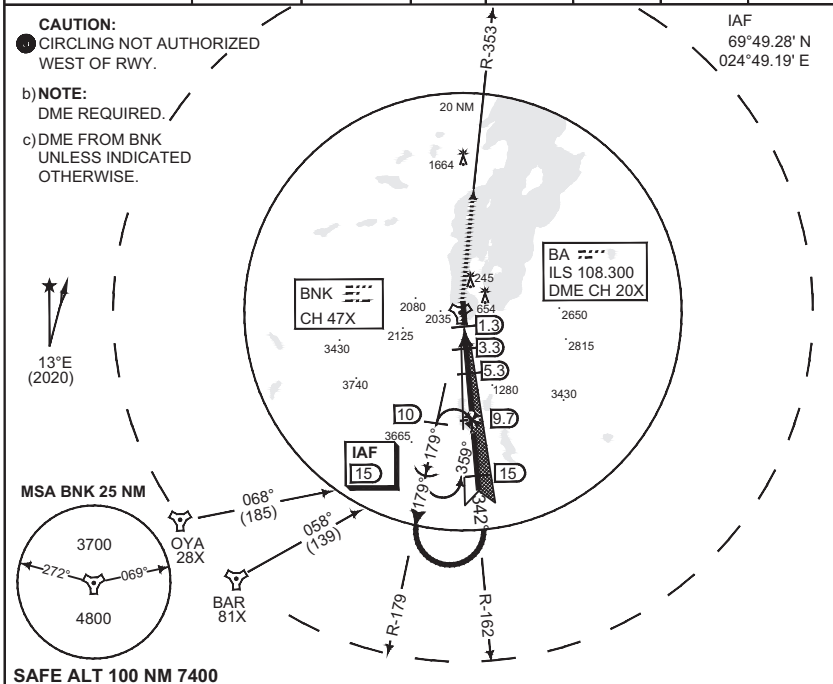
RNOA# 26 JAN 2023

MIPS
INSTRUMENT APPROACH CHART

ILS M or LOC M RWY 34
BANAK (ENNA)

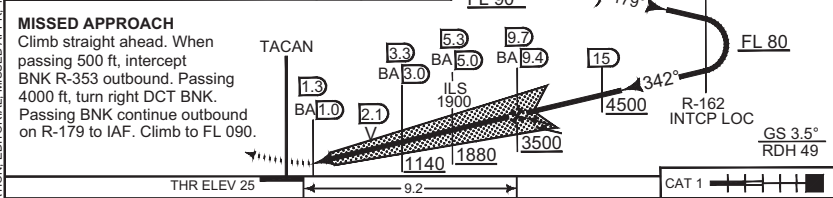
AD ELEV 26

ATIS 136.325		BANAK TWR / APPR 118.900 118.050 122.100 280.350					
LOCALIZER/DME BA 108.300 / CH 20X	APP COURSE 342°	GS INTCP ALT 3500	GS 3.5°	DA SEE CAT	THR ELEV 25	ALS 737 m	LDA 8543



SAFE ALT 100 NM 7400

DME	2	3	4	5	6	7	8	9	
ALT BNK	-	1000	1380	1760	2140	2520	2910	3290	
ALT BA	760	1130	1510	1890	2270	2660	3040	3430	



THR ELEV 25 9.2 CAT 1

CATEGORY	A	B	C	D	E
S-ILS 34	287 - 600 262 (300 - 0.8/1.3)	302 - 600 277 (300 - 0.8/1.3)	312 - 650 287 (300 - 0.8/1.4)	325 - 650 300 (300 - 0.8/1.4)	330 - 700 305 (400 - 0.8/1.4)
S-LOC 34	670 - 2300 645 (700 - 2.3/3.0)				
● CIRCLING	670 - 2.3 644 (700 - 2.3)	980 - 2.3 954 (1000 - 2.3)	1350 - 2.4 1324 (1400 - 2.4)	2030 - 3.6 2004 (2100 - 3.6)	3180 - 3.6 3154 (3200 - 3.6)

ILS M or LOC M RWY 34 70°04.00' N
024°58.43' E **BANAK (ENNA)**

CHANGES: MAGVAR, ELEVATION, EDITORIAL, MISSED APPR, MINIMA

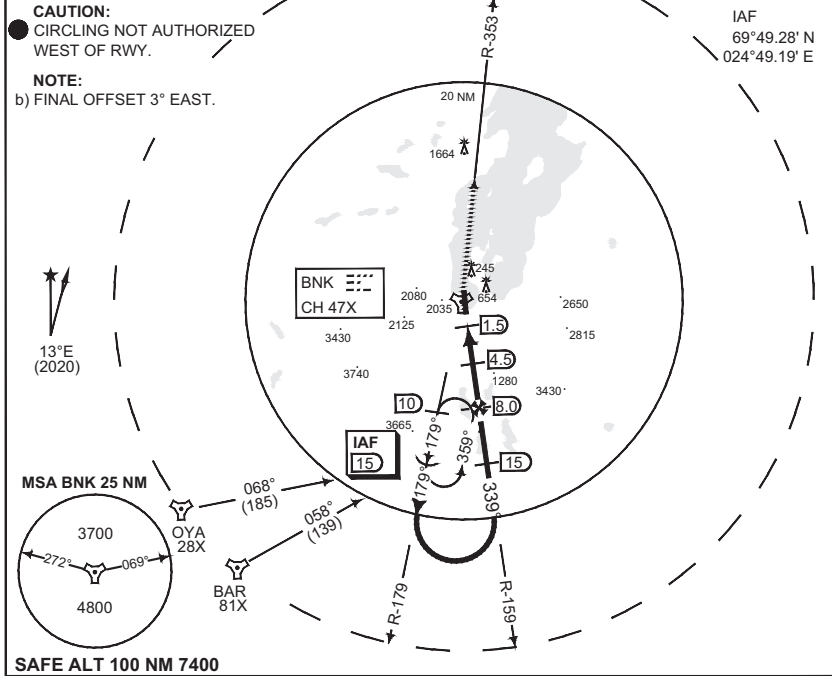
RNOAT 26 JAN 2023

MIPS
INSTRUMENT APPROACH CHART

AD ELEV 26

TACAN RWY 34
BANAK (ENNA)

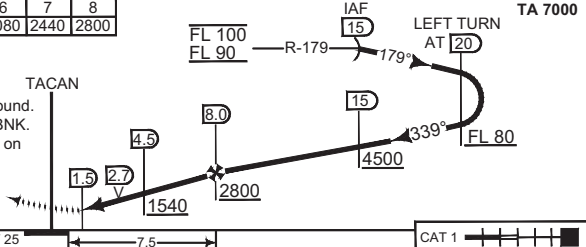
ATIS 136.325		BANAK TWR / APPR 118.900 118.050 122.100 280.350						
TACAN BNK CH 47X	APP COURSE 339°	FAF ALT 2800	Descent GR 6.0% (3.4°)	MDA 880	THR ELEV 25	ALS 737 m	LDA 8543	



DME BNK	3	4	5	6	7	8
ALT	990	1350	1710	2080	2440	2800

MISSED APPROACH

At BNK 1.5 DME climb straight ahead and intercept R-353 outbound. Passing 4000 ft, turn right DCT BNK. Passing BNK continue outbound on R-179 to IAF. Climb to FL 090.



CATEGORY	A	B	C	D	E
----------	---	---	---	---	---

S-TAC 34 **880 - 3.3 854 (900 - 3.3/4.0)**

● CIRCLING	880 - 3.3 854 (900 - 3.3)	980 - 3.3 954 (1000 - 3.3)	1350 - 3.3 1324 (1400 - 3.3)	2030 - 3.6 2004 (2100 - 3.6)	3180 - 3.6 3154 (3200 - 3.6)
------------	----------------------------------	-----------------------------------	-------------------------------------	-------------------------------------	-------------------------------------

TACAN RWY 34

70°04.00' N
024°58.43' E

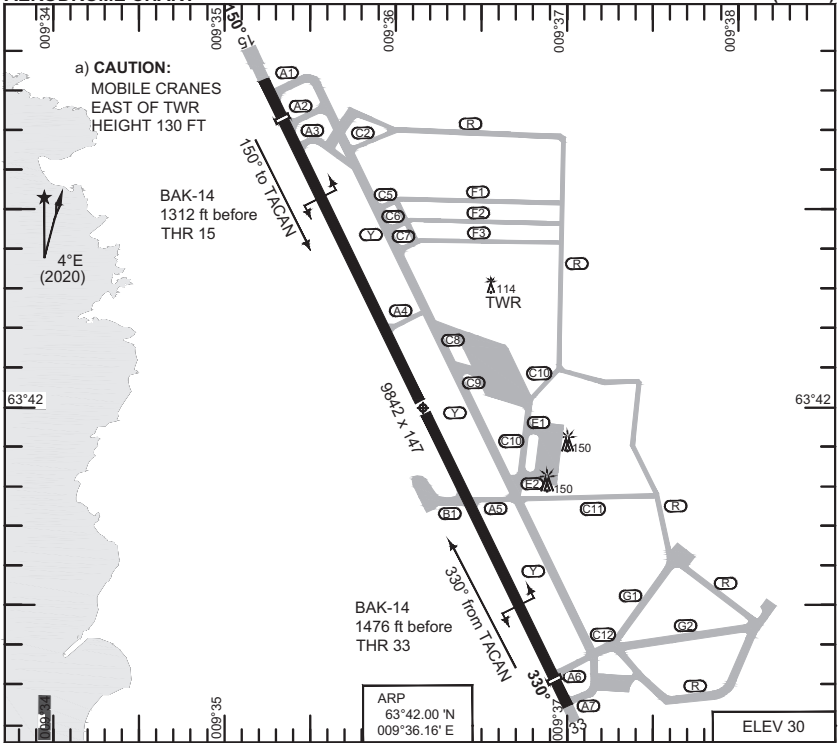
BANAK (ENNA)

CHANGES: MAGVAR, ELEVATION, EDITORIAL, MISSED APPR, MINIMA

RNOAT 26 JAN 2023

AERODROME CHART

OERLAND (ENOL)



ARP
63°42.00' N
009°36.16' E

ELEV 30

RWY	PCN	TORA	ASDA	TODA	LDA	PAPI	THR ELEV	THR PSN
15	50/F/B/X/U	9842	9842	10787	9842	3.0°	19	63°42.73' N - 009°35.37' E
33	50/F/B/X/U	9842	9842	10784	9842	3.3°	30	63°41.28' N - 009°36.96' E

ATIS 119.325
OERLAND TWR 118.700 308.850

AERODROME CHART

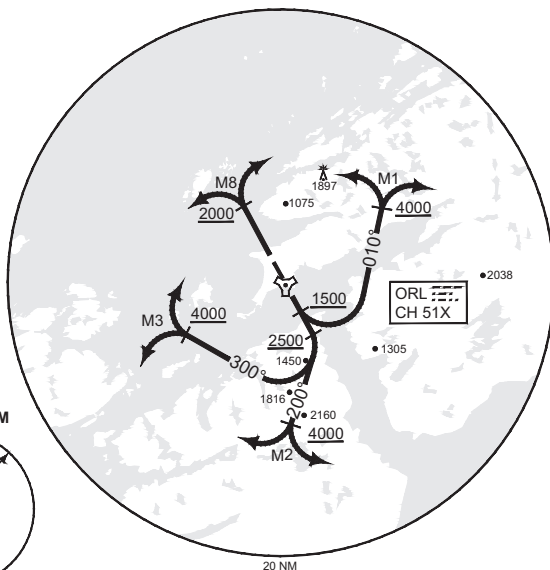
OERLAND (ENOL)

**MIPS
INSTRUMENT DEPARTURE CHART**

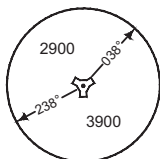
AD ELEV 30

**HPMA SID RWY 15 / 33
OERLAND (ENOL)**

ATIS 119.325	OERLAND TWR 118.700 308.850	OERLAND APP 118.250 268.200		POLARIS CONTROL S 125.700 N 118.550								
	RWY 15 / 33	MIN CLIMB 8.75%	5.0°	GS (kt) V/V (fpm)	60	120	180	240	300	360	to	reason
					532	1064	1595	2127	2659	3190	4000	HPMA



MSA ORL 25 NM



SAFE ALT 100 NM 9500

TA 7000

HPMA M1 (RWY 15 / 15Y*)	- Climb on HDG 150°. Passing 1500 ft turn left to HDG 010°. Passing 4000 ft turn according to ATC clearance. Climb to FL 100. - Maximum 350 KIAS during first turn, then maximum 450 KIAS.
HPMA M2 (RWY 15 / 15Y*)	- Climb on HDG 150°. Passing 2500 ft turn right to HDG 200°. Passing 4000 ft turn according to ATC clearance. Climb to FL 100. - Maximum 450 KIAS.
HPMA M3 (RWY 15 / 15Y*)	- Climb on HDG 150°. Passing 2500 ft turn right to HDG 300°. Passing 4000 ft turn according to ATC clearance. Climb to FL 100. - Maximum 450 KIAS.
HPMA M8 (RWY 33 / 33Y*)	- Climb on HDG 330°. Passing 2000 ft turn according to ATC clearance. Climb to FL 100. - Maximum 450 KIAS.

* Y specifies TWY Y. Takeoff from TWY Y requires special approval.

CHANGES: NEW PROCEDURE

RNOAF 26 JAN 2023

HPMA SID RWY 15 / 33

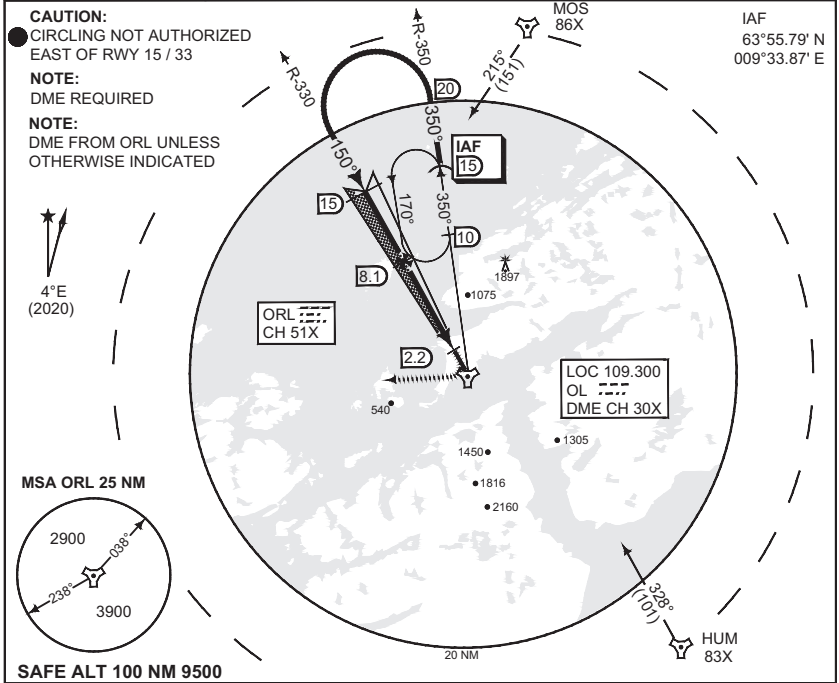
63°42.00' N
009°36.16' E

OERLAND (ENOL)

MIPS INSTRUMENT APPROACH CHART

HPMA ILS or LOC RWY 15 OERLAND (ENOL)

ATIS 119.325		OERLAND ARR 126.200 278.650		OERLAND APP 118.250 268.200			OERLAND TWR 118.700 308.850	
ILS/DME OL 109.300 / CH 30X		APP COURSE 150°	GS INTCP ALT 2000	GS 3.0°	DA 220	THR ELEV 19	ALS 720 m	LDA 9842



CHANGES: HUM FREQ.

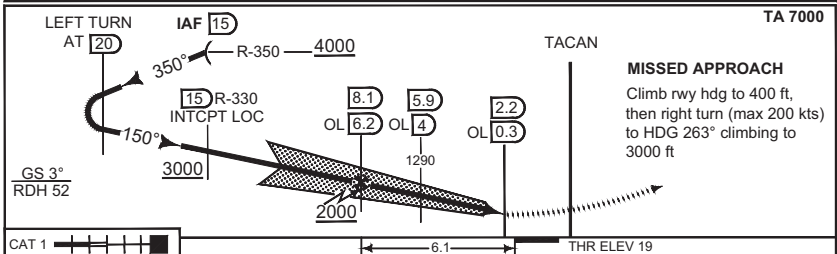
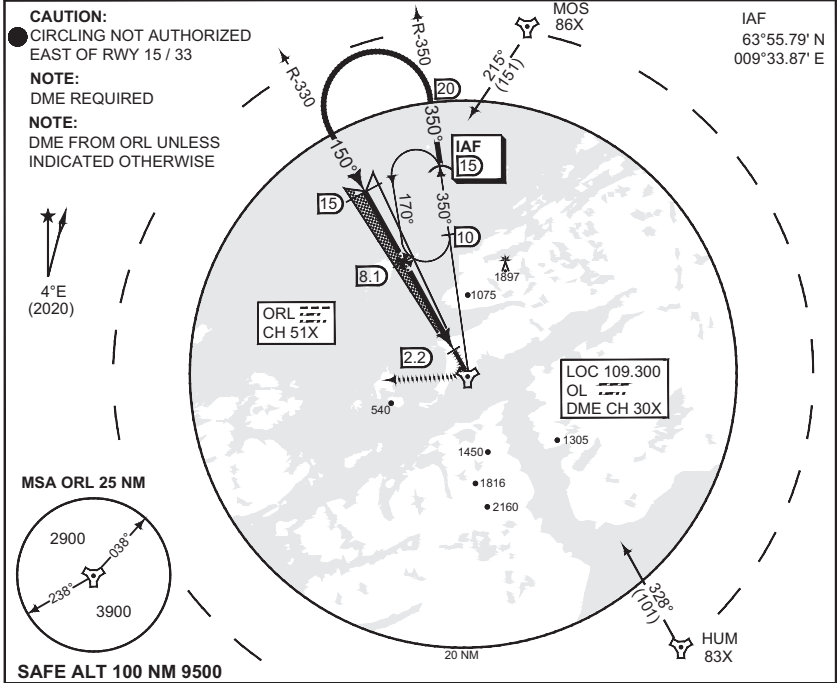
RNOA/F 22 FEB 2024

MIPS
INSTRUMENT APPROACH CHART

ILS M or LOC M RWY 15
OERLAND (ENOL)

AD ELEV 30

ATIS 119.325		OERLAND ARR 126.200 278.650		OERLAND APP 118.250 268.200			OERLAND TWR 118.700 308.850	
ILS/DME OL 109.300 / CH 30X	APP COURSE 150°	GP INTCP ALT 2000	GS 3.0°	DA 220	THR ELEV 19	ALS 720 m	LDA 9842	



CATEGORY	A	B	C	D
S-ILS 15	220 - 0.8 201 (300 - 0.8/1.6)			
S-LOC 15	360 - 1.2 341 (400 - 1.2/1.6)			360 - 1.2 341 (400 - 1.2/2.0)
● CIRCLING	470 - 1.9 440 (500-1.9)	560 - 2.8 530 (600-2.8)	990 - 3.7 960 (1000-3.7)	1000 - 4.6 970 (1000-4.6)

ILS M or LOC M RWY 15 **OERLAND (ENOL)**

63°42.00' N
009°36.16' E

CHANGES: HUM FREQ.

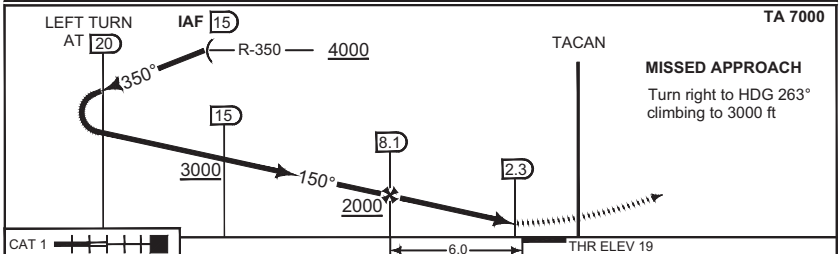
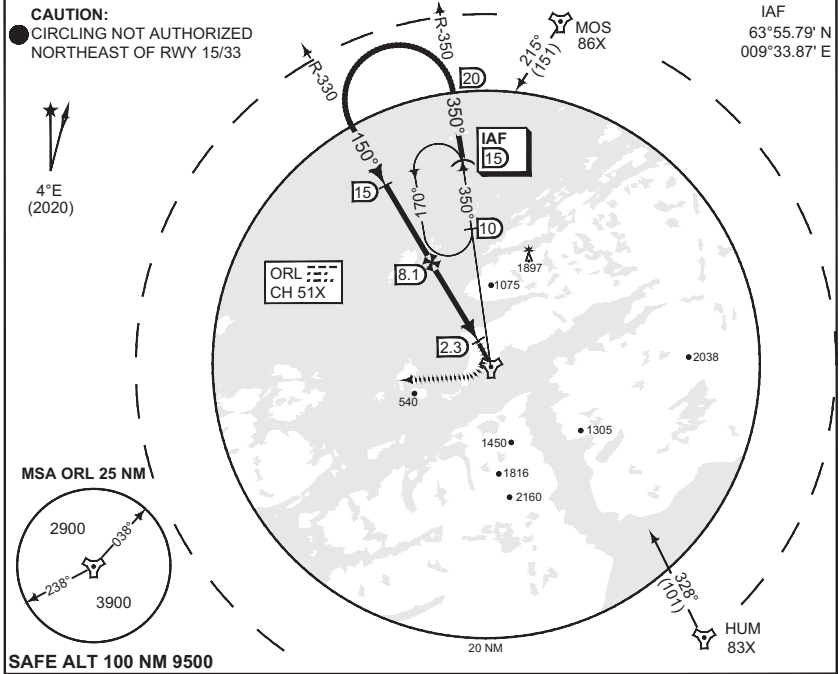
RNOAF 22 FEB 2024

**PANS-OPS
INSTRUMENT APPROACH CHART**

**TACAN RWY 15
OERLAND (ENOL)**

AD ELEV 30

ATIS 119.325		OERLAND ARR 126.200 278.650		OERLAND APP 118.250 268.200		OERLAND TWR 118.700 308.850	
TACAN ORL CH 51X	APP COURSE 150°	FAF ALT 2000	Descent GR 5.27%	MDA 370	THR ELEV 19	ALS 720 m	LDA 9842



CATEGORY	B	C	D	E
S-TAC 15		370 - 0.9 351 (400 - 0.9/1.6)		
● CIRCLING	560 - 1.6 530 (600 - 1.6)	990 - 2.4 960 (1000 - 2.4)	1000 - 3.6 970 (1000 - 3.6)	1980 - 3.6 1950 (2000 - 3.6)

CHANGES: HUM FREQ.

TACAN RWY 15

63°42.00' N
009°36.16' E

OERLAND (ENOL)

RNOA/F 22 FEB 2024

MIPS
INSTRUMENT APPROACH CHART

TACAN RWY 15Y
OERLAND (ENOL)

AD ELEV 30

ATIS 119.325		OERLAND ARR 126.200 278.650		OERLAND APP 118.250 268.200		OERLAND TWR 118.700 308.850	
TACAN ORL CH 51X	APP COURSE 152°	FAF ALT 2000	Descent GR 5.3% (3.0°)	MDA 370	THR ELEV 20	ALS N/A	LDA 9022

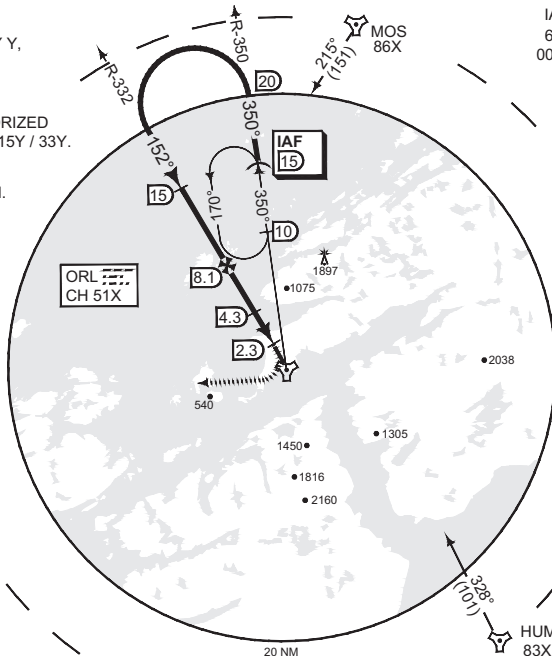
WARNING:

- a) LANDING THR ON TWY Y,
TWY WIDTH 108 FT.

NOTE:

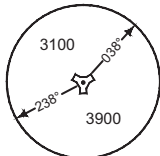
- CIRCLING NOT AUTHORIZED
NORTHEAST OF RWY 15Y / 33Y.
- c) MISSED APPROACH
MAX 250 KIAS IN TURN.
- d) FINAL OFFSET
2° NORTH.

IAF
63°55.79' N
009°33.87' E

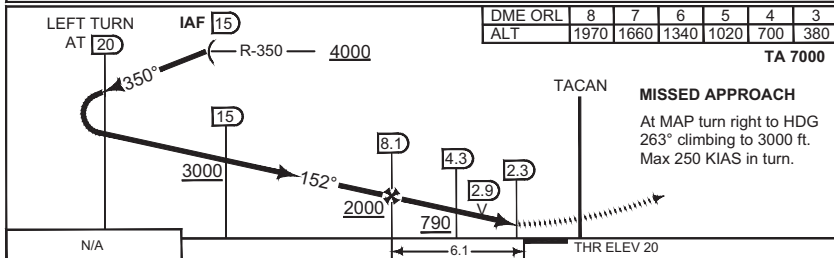


4°E
(2020)

MSA ORL 25 NM



SAFE ALT 100 NM 9500



DME ORL	8	7	6	5	4	3
ALT	1970	1660	1340	1020	700	380

TA 7000

CATEGORY	B	C	D	E
----------	---	---	---	---

S-TAC 15Y	370 - 1.6 350 (400 - 1.6)			
● CIRCLING	560 - 2.4 530 (600 - 2.4)	990 - 4.5 960 (1000 - 4.5)	990 - 4.5 960 (1000 - 4.5)	1980 - 5.0 1950 (2000 - 5.0)

TACAN RWY 15Y

63°42.00' N
009°36.16' E

OERLAND (ENOL)

CHANGES: HUM FREQ
MIPS

FRN04F 22 FEB 2024

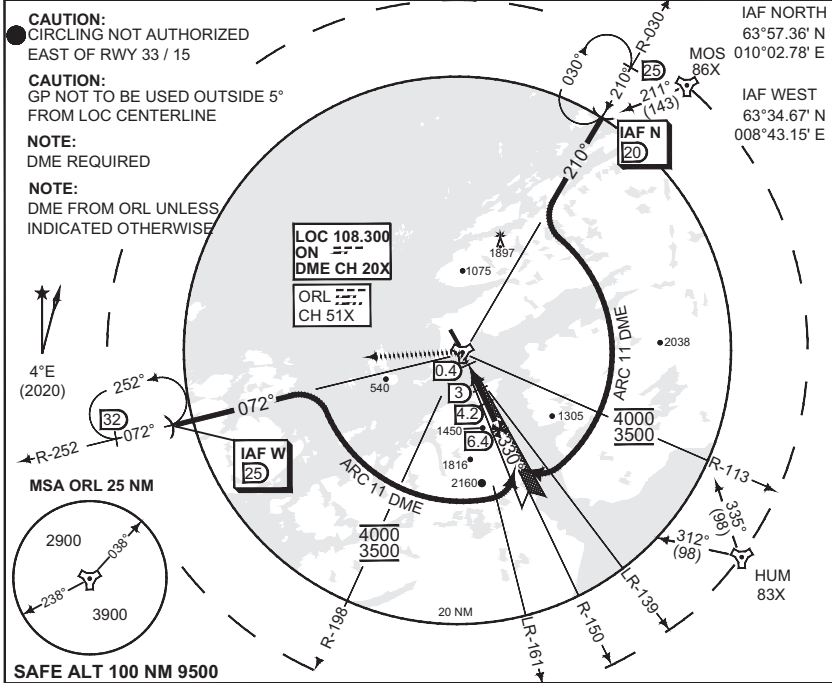
MIPS
INSTRUMENT APPROACH CHART

HPMA ILS or LOC RWY 33
OERLAND (ENOL)

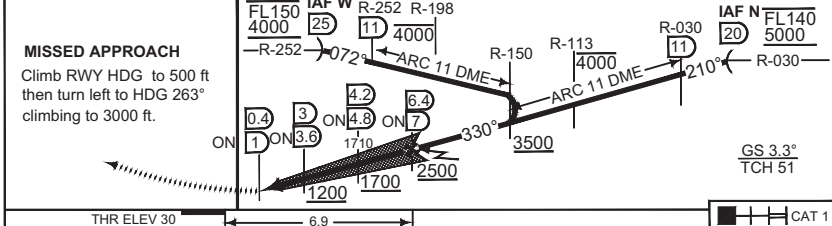
AD ELEV 30

ATIS 119.325	OERLAND ARR 126.200 278.650	OERLAND APP 118.250 268.200	OERLAND TWR 118.700 308.850
-----------------	--------------------------------	--------------------------------	--------------------------------

ILS/DME ON 108.300 / CH 20X	APP COURSE 330°	GS INTCP ALT 2500	GS 3.3°	DA 228	THR ELEV 30	ALS 450 m	LDA 9842
--------------------------------	--------------------	----------------------	------------	-----------	----------------	--------------	-------------



TACAN **TA 7000**



CATEGORY	HPMA
S-ILS 33	230 - 1.2 200 (200 - 1.2/1.2)
S-LOC 33	360 - 1.2 330 (400 - 1.2/1.2)
● CIRCLING	600 - 3.2 570 (600 - 3.2)

HPMA ILS or LOC RWY 33 63°42.00' N
009°36.16' E **OERLAND (ENOL)**

CHANGES: HUM FREQ.

RNOA/FZ 22 FEB 2024

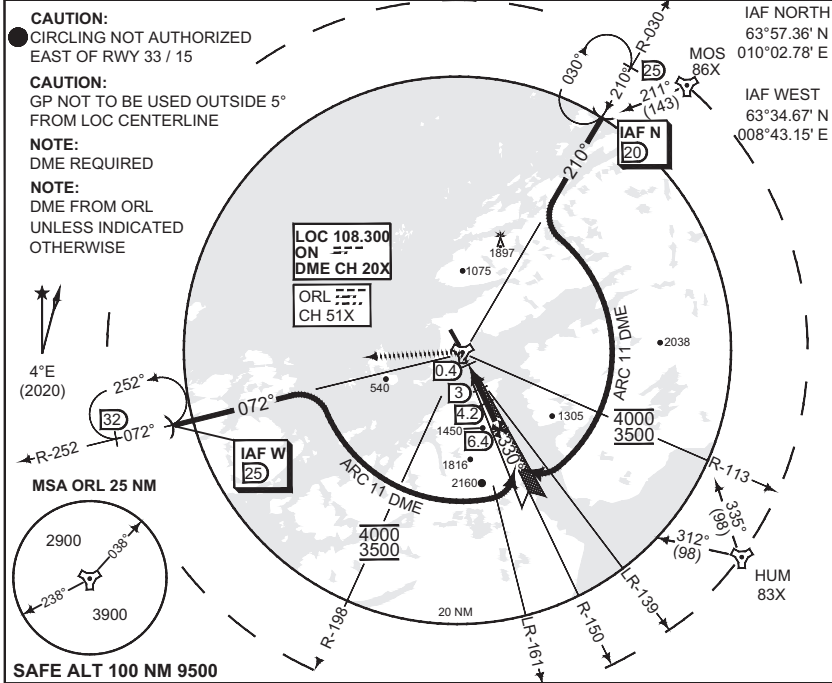
MIPS
INSTRUMENT APPROACH CHART

ILS M or LOC M RWY 33
OERLAND (ENOL)

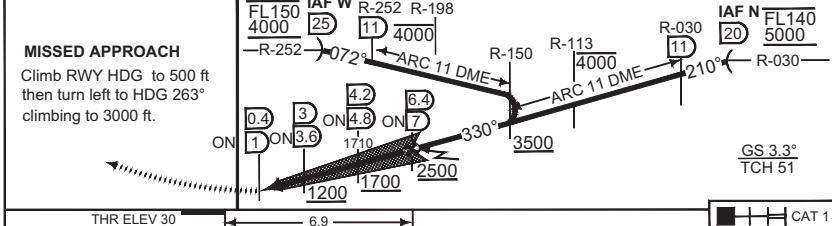
ATIS 119.325	OERLAND ARR 126.200 278.650	OERLAND APP 118.250 268.200	OERLAND TWR 118.700 308.850
-----------------	--------------------------------	--------------------------------	--------------------------------

AD ELEV 30

ILS/DME ON 108.300 / CH 20X	APP COURSE 330°	GS INTCP ALT 2500	GS 3.3°	DA See CAT	THR ELEV 30	ALS 450 m	LDA 9842
--------------------------------	--------------------	----------------------	------------	----------------------	----------------	--------------	-------------



TACAN TA 7000



CATEGORY	B	C	D	E
S-ILS 33	230 - 1.2	200 (200 - 1.2/1.2)	232 - 1.2 202 (300 - 1.2/1.2)	242 - 1.2 212 (300 - 1.2/1.2)
S-LOC 33	360 - 1.2 330 (400 - 1.2/1.6)		360 - 1.6 330 (400 - 1.6/2.0)	
● CIRCLING	560 - 2.8 530 (600 - 2.8)	990 - 3.7 960 (1000 - 3.7)	1000 - 4.6 970 (1000 - 4.6)	1980 - 6.5 1950 (2000 - 6.5)

ILS M or LOC M RWY 33

OERLAND (ENOL)

63°42.00' N
009°36.16' E

CHANGES: HUM FREQ.

ENOL AF 22 FEB 2024

**PANS-OPS
INSTRUMENT APPROACH CHART**

**TACAN RWY 33
OERLAND (ENOL)**

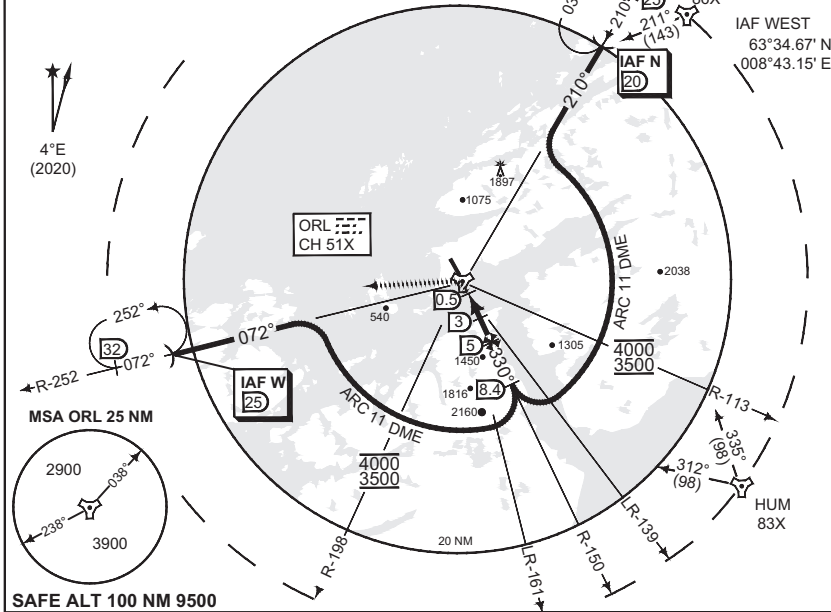
AD ELEV 30

ATIS 119.325	OERLAND ARR 126.200 278.650	OERLAND APP 118.250 268.200	OERLAND TWR 118.700 308.850				
TACAN ORL CH 51X	APP COURSE 330°	FAF ALT 2100	Descent GR 6.1%	MDA 390	THR ELEV 30	ALS LENGTH 450 M	LDA 9842

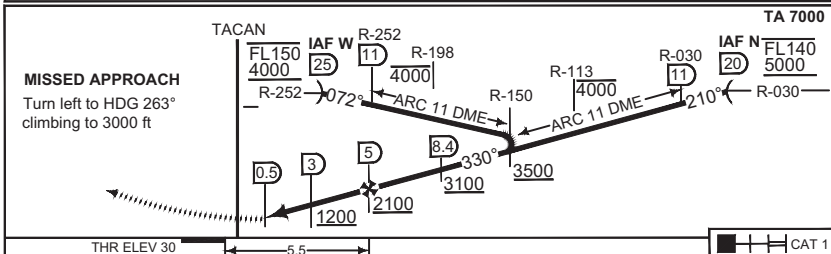
CAUTION:

● CIRCLING NOT AUTHORIZED
NORTHEAST OF RWY 33 / 15

IAF NORTH
63°57.36' N
010°02.78' E
MOS 86X
IAF WEST
63°34.67' N
008°43.15' E



SAFE ALT 100 NM 9500



THR ELEV 30 | 5.5 | CAT 1

CATEGORY	B	C	D	E
S-TAC 33	390 - 1.2	360 (400 - 1.2/1.6)	390 - 1.6	360 (400 - 1.6/2.0)
● CIRCLING	560 - 2.8 530 (600 - 2.8)	990 - 3.7 960 (1000 - 3.7)	1000 - 4.6 970 (1000 - 4.6)	1980 - 6.5 1950 (2000 - 6.5)

TACAN RWY 33

63°42.00' N
009°36.16' E

OERLAND (ENOL)

CHANGES: HUM FREQ.

RNOA/F 22 FEB 2024

MIPS
INSTRUMENT APPROACH CHART

AD ELEV 30

TACAN RWY 33Y
OERLAND (ENOL)

ATIS 119.325	OERLAND ARR 126.200 278.650	OERLAND APP 118.250 268.200	OERLAND TWR 118.700 308.850				
TACAN ORL CH 51X	APP COURSE 319°	FAF ALT 2100	Descent GR 6.1% (3.5°)	MDA SEE CAT	THR ELEV 29	ALS LENGTH N/A	LDA 9022

WARNING:

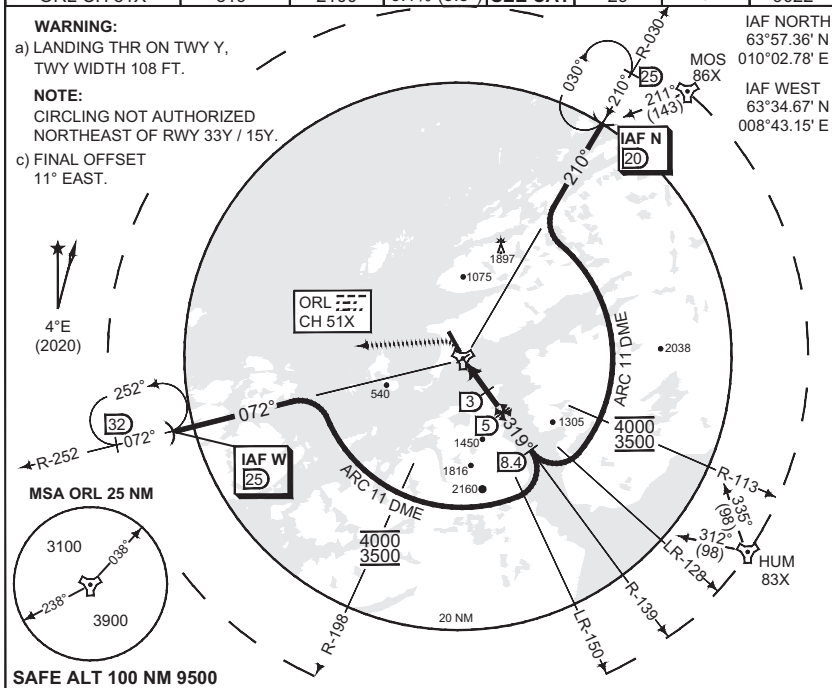
- a) LANDING THR ON TWY Y,
TWY WIDTH 108 FT.

NOTE:

CIRCLING NOT AUTHORIZED
NORTHEAST OF RWY 33Y / 15Y.

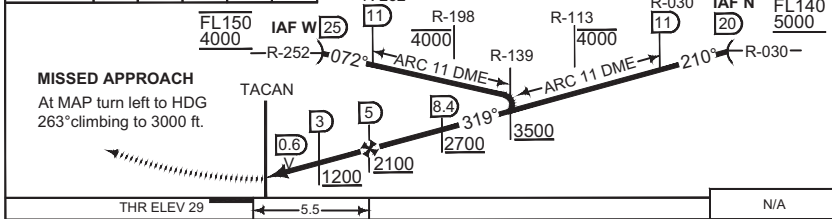
- c) FINAL OFFSET
11° EAST.

IAF NORTH
63°57.36' N
010°02.78' E
MOS 86X
IAF WEST
63°34.67' N
008°43.15' E



SAFE ALT 100 NM 9500

DME ORL	1	2	3	4	5	TA 7000
ALT	640	1010	1370	1740	2100	FL140 5000



THR ELEV 29	5.5	N/A
-------------	-----	-----

CATEGORY	B	C	D	E
S-TAC 33Y	490 - 2.2	461 (500 - 2.2)		510 - 2.3 481 (500 - 2.3)
CIRCLING	560 - 2.4 530 (600 - 2.4)	990 - 4.5	960 (1000 - 4.5)	1980 - 5.0 1950 (2000 - 5.0)

TACAN RWY 33Y

63°42.00' N
009°36.16' E

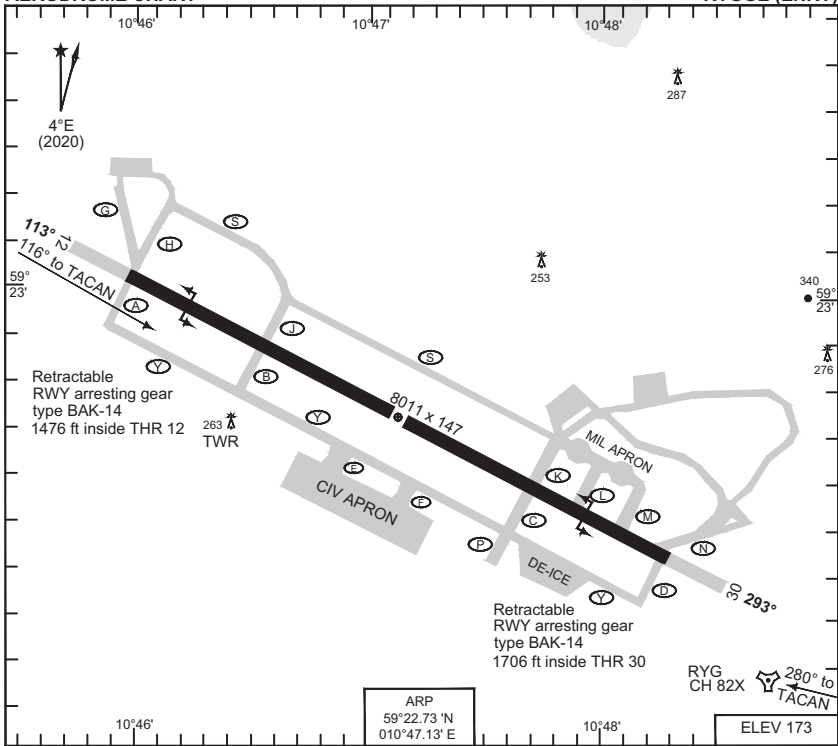
OERLAND (ENOL)

CHANGES: HUM, FREQ

RNAIF 22 FEB 2024

AERODROME CHART

RYGGE (ENRY)



RWY	PCN	TORA	ASDA	TODA	LDA	PAPI	THR ELEV	THR PSN
12	85 F/C/X/T	8011	8011	8822	8011	3.0°	168	59°23.02' N - 010°45.97' E
30	85 F/C/X/T	8011	8011	8208	8011	3.0°	169	59°22.43' N - 010°48.28' E

ATIS 136.175
 RYGGE GND 121.700
 RYGGE TWR 119.500 308.850 257.800

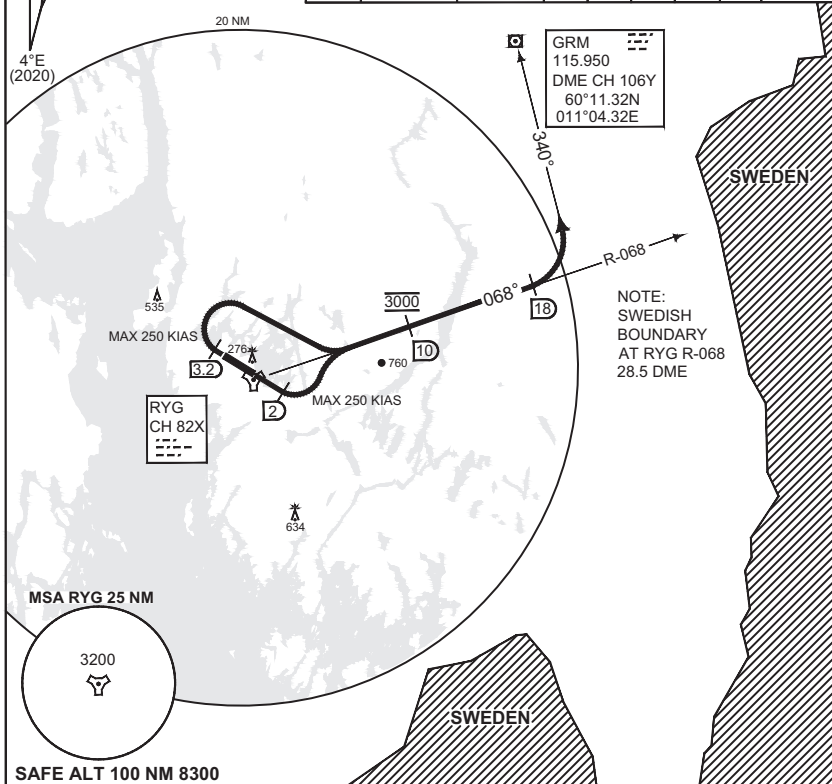
AERODROME CHART

RYGGE (ENRY)

**MIPS
INSTRUMENT DEPARTURE CHART**

**SID EAST
RYGGE (ENRY)**

ATIS 136.175		RYGGE TWR 122.100 308.850		FARRIS APP E 124.350 W 134.050							
OSLO CONTROL EAST 125.050 279.000		AD ELEV 173	RWY 12	GS (kt) V/V (fpm)	FROM-TO DER-3000	60 280	120 560	180 840	240 1120	300 1400	REASON ATC
			30	V/V (fpm)	DER-3000	340	680	1020	1360	1700	



TA 7000

SID EAST RWY 12	- Climb RWY track to 1000 ft or RYG 2 DME, whichever occurs first, then turn left to intercept R-068 outbound to 18 DME. Maximum 250 KIAS. Cross 10 DME at 3000 ft. Follow ATC instruction. - Minimum climb gradient 4.6% (2.7°) to 3000 ft.
SID EAST RWY 30	- Climb RWY track to 1000 ft or RYG 3.2 DME, whichever occurs first, then turn right to intercept R-068 outbound to 18 DME. Maximum 250 KIAS. Cross 10 DME at 3000 ft. Follow ATC instruction. - Minimum climb gradient 5.5% (3.2°) to 3000 ft.

CHANGES: EDITORIAL

RNOAF-16 JUN 2022

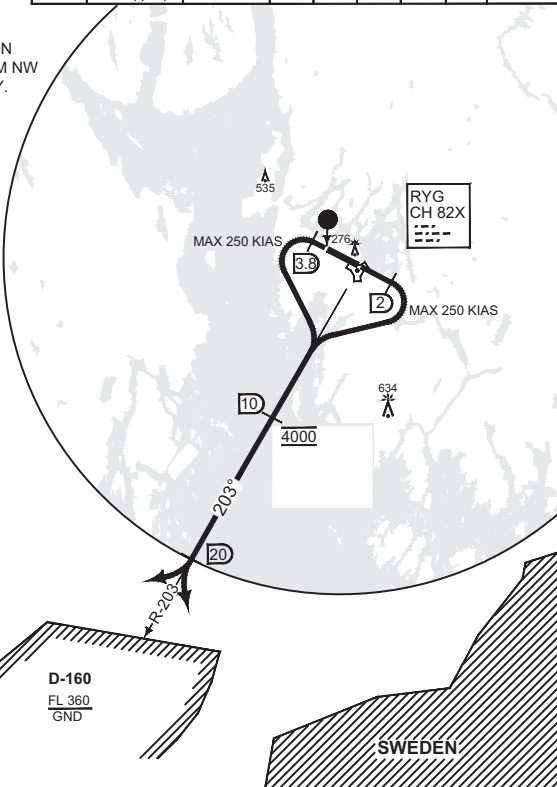
**MIPS
INSTRUMENT DEPARTURE CHART**

**SID WEST
RYGGE (ENRY)**

ATIS 136.175		119.500		RYGGE TWR 122.100 308.850		FARRIS APP 124.350 134.050						
OSLO CONTROL EAST 125.050 279.000		AD ELEV 173		RWY	GS (kt)	FROM-TO	60	120	180	240	300	REASON
				12	V/V (fpm)	DER-4000	330	660	990	1320	1650	ATC
				30	V/V (fpm)	DER-4000	220	440	660	880	1100	

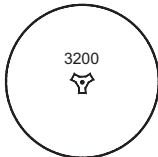
WARNING:

● CLOSE-IN OBSTACLES
RISING TERRAIN/VEGETATION
FROM DER RWY 30 TO 0.4 NM NW
MUST BE AVOIDED VISUALLY.



CHANGES: WARNING, EMERGENCY SAFE, CLIMB, DME, SPEED, INSTRUCTIONS, EDITORIAL

MSA RYG 25 NM



SAFE ALT 100 NM 8300

D-160
FL 360
GND

SWEDEN

TA 7000

SID WEST RWY 12	- Climb RWY track to 1000 ft or 2 DME RYG, whichever occurs first, then turn right to intercept R-203 outbound to 20 DME. Maximum 250 KIAS. Cross 10 DME at 4000 ft. - Minimum climb gradient 5.4% (3.1°) to 4000 ft.
● SID WEST RWY 30	- Climb RWY track to 1000 ft or RYG 3.8 DME, whichever occurs first, then turn left to intercept R-203 outbound to 20 DME. Maximum 250 KIAS. Cross 10 DME at 4000 ft. - Minimum climb gradient 3.6% (2.1°) to 4000 ft.

RYGGE SID WEST

59°22.73' N
010°47.13' E

RYGGE (ENRY)

RNOAIP 24 FEB 2022

MIPS
INSTRUMENT APPROACH CHART

AD ELEV 173

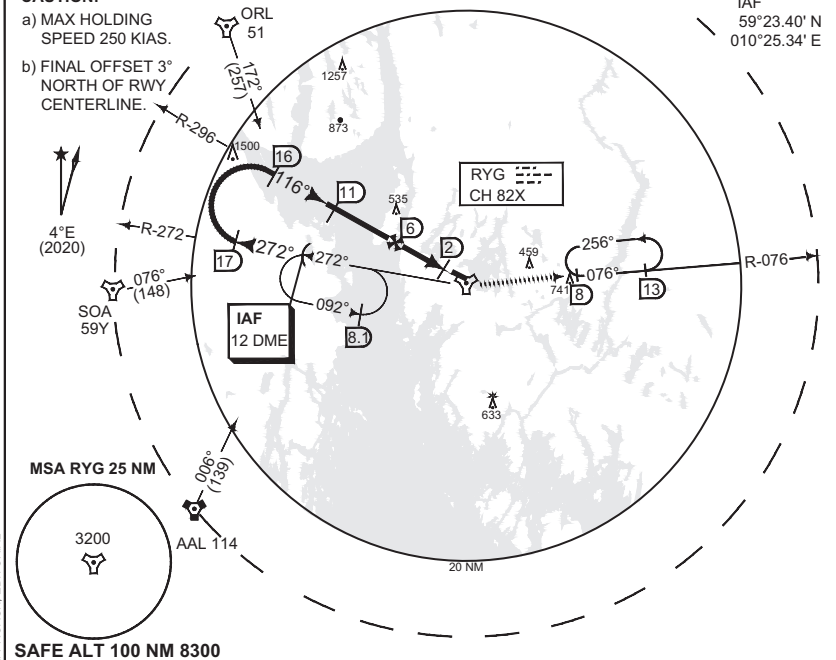
TACAN RWY 12
RYGGE (ENRY)

ATIS 136.175	RYGGE GND 121.700	RYGGE TWR 119.500 122.100 308.850	FARRIS APP (WEST) 134.050	FARRIS APP (EAST) 124.350			
TACAN RYG CH 82X	APP COURSE 116°	FAF ALT 1600	Descent GR 5.2%	MDA 610	THR ELEV 168	ALS 900 m	LDA 8011

CAUTION:

- a) MAX HOLDING SPEED 250 KIAS.
- b) FINAL OFFSET 3° NORTH OF RWY CENTERLINE.

IAF
59°23.40' N
010°25.34' E

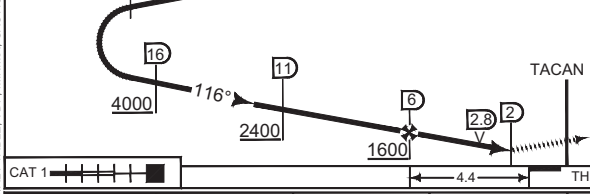


RIGHT TURN AT 17	IAF 12	7000	DME 5	4	3
272° (R-272)	4000		ALT RYG 1290	980	660

TA 7000

MISSED APPROACH

At RYG 2 DME climb 116°. Passing 1000 ft turn left to intercept R-076 outbound and climb to 4000 ft. Enter holding at R-076/13 DME.



CAT 1	A	B	C	D	E
-------	---	---	---	---	---

S-TAC 12	610 - 1400 442 (400-1.4/2.1)				
CIRCLING	670 - 2.3 497 (500-2.3)	680 - 2.4 507 (600-2.4)	860 - 3.2 687 (700-3.2)	910 - 3.6 737 (800-3.6)	1150 - 4.5 977 (1000-4.5)

TACAN RWY 12 59°22.73' N
010°47.13' E **RYGGE (ENRY)**

CHANGES: MAGVAR, DISTIALT TABLE, VDP, MINIMA, CAUTION, MISSED APPROACH, EDITORIAL

RNOCAF 24 FEB 2022

MIPS INSTRUMENT APPROACH CHART

HPMA ILS or LOC RWY 30 RYGGE (ENRY)

AD ELEV 173

ATIS 136.175	RYGGE GND 121.700	RYGGE TWR 119.500 122.100 308.850	FARRIS APP (WEST) 134.050	FARRIS APP (EAST) 124.350			
ILS/DME RY 109.100 / CH 28X	APP COURSE 293°	GS INTCP ALT 3000	GS 3.0°	DA 388	THR ELEV 169	ALS 720 m	LDA 8011

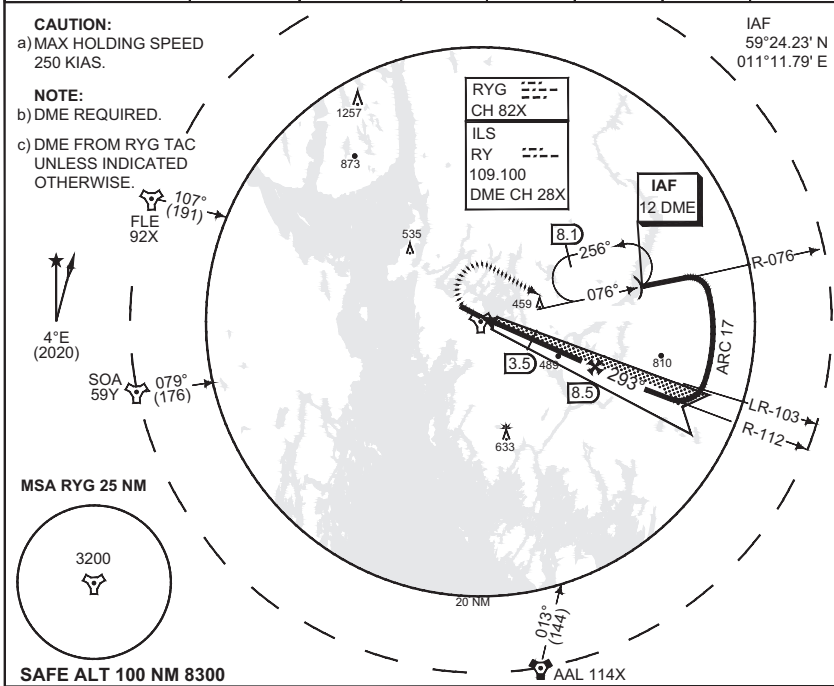
CAUTION:

a) MAX HOLDING SPEED 250 KIAS.

NOTE:

b) DME REQUIRED.
c) DME FROM RYG TAC UNLESS INDICATED OTHERWISE.

IAF
59°24.23' N
011°11.79' E



SAFE ALT 100 NM 8300

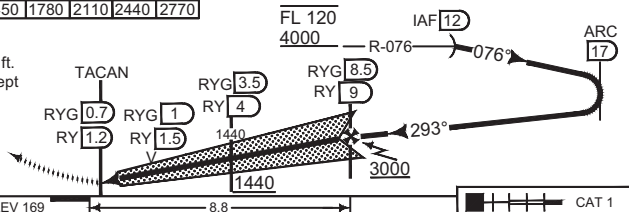
DME	2	3	4	5	6	7	8
ALT RYG	960	1290	1610	1940	2270	2600	2930
ALT RY	800	1130	1450	1780	2110	2440	2770

TA 7000

MISSED APPROACH

Climb RWY track to 1000 ft. Then turn right and intercept R-076 outbound to IAF. Climb to 4000 ft and hold.

GS 3.0°
RDH 51



THR ELEV 169

CAT 1

CATEGORY	HPMA
S-ILS 30	388 - 550 219 (300-0.8/1.2)
S-LOC 30	610 - 1400 441 (500-1.4/2.1)
CIRCLING	730 - 3.2 557 (600-3.2)

HPMA ILS or LOC RWY 30

59°22.73' N
010°47.13' E

RYGGE (ENRY)

CHANGES: MAGVAR, CAUTION, DISTIALT TABLE, VDP, MINIMA

RNOCAF 24 FEB 2023

MIPS
INSTRUMENT APPROACH CHART

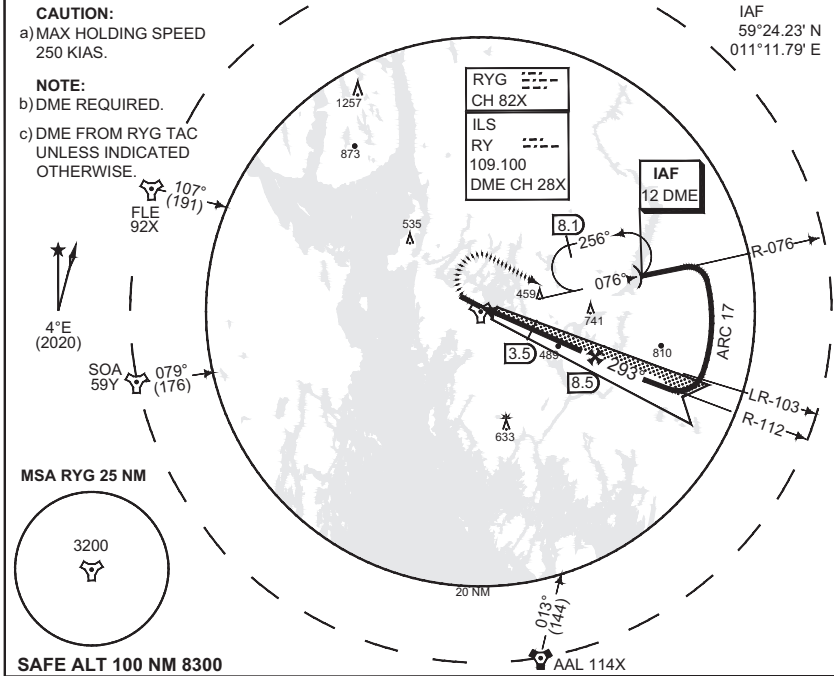
AD ELEV 173

ILS M or LOC M RWY 30
RYGGE (ENRY)

ATIS 136.175	RYGGE GND 121.700	RYGGE TWR 119.500	122.100	308.850	FARRIS APP (WEST) 134.050	FARRIS APP (EAST) 124.350	
ILS/DME RY 109.100 / CH 28X	APP COURSE 293°	GS INTCP ALT 3000	GS 3.0°	DA SEE CAT	THR ELEV 169	ALS 720 m	LDA 8011

CAUTION:
a) MAX HOLDING SPEED 250 KIAS.
NOTE:
b) DME REQUIRED.
c) DME FROM RYG TAC UNLESS INDICATED OTHERWISE.

IAF
59°24.23' N
011°11.79' E

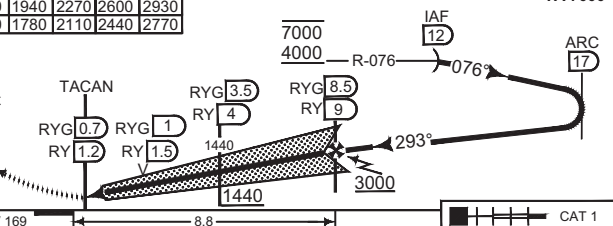


SAFE ALT 100 NM 8300

DME	2	3	4	5	6	7	8
ALT RYG	960	1290	1610	1940	2270	2600	2930
ALT RY	800	1130	1450	1780	2110	2440	2770

TA 7000

MISSED APPROACH
Climb RWY track to 1000 ft. Then turn right and intercept R-076 outbound to IAF. Climb to 4000 ft and hold.



GS 3.0°
RDH 51

THR ELEV 169

8.8

CAT 1

CATEGORY	A	B	C	D	E
S-ILS 30	377- 550 208 (300-0.8/1.2)	385- 550 216 (300-0.8/1.2)	391- 550 222 (300-0.8/1.2)	401- 550 232 (300-0.8/1.2)	419- 550 250 (300-0.8/1.3)
S-LOC 30	610 - 1400 441 (500-1.4/2.1)				
CIRCLING	670- 2.3 497 (500-2.3)	670- 2.3 497 (500-2.3)	860- 3.2 687 (700-3.2)	880- 3.6 707 (800-3.6)	1120- 4.3 947 (1000-4.3)

CHANGES: MAGVAR, CAUTION, DISTIALT TABLE, VDP, MINIMA

RNGA/F 24 FEB 2022

ILS M or LOC M RWY 30

59°22.73' N
010°47.13' E

RYGGE (ENRY)

MIPS
INSTRUMENT APPROACH CHART

AD ELEV 173

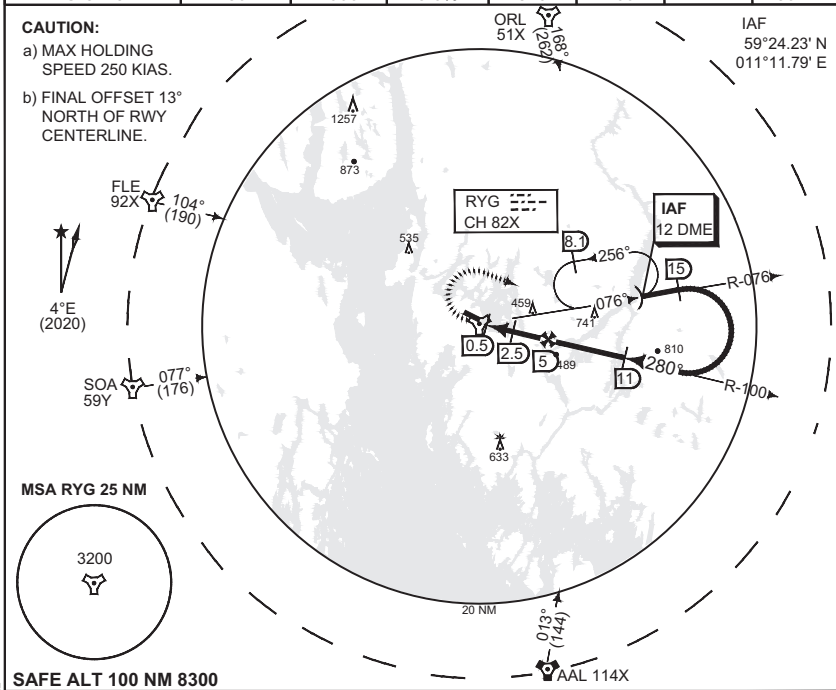
TACAN RWY 30
RYGGE (ENRY)

ATIS 136.175	RYGGE GND 121.700	RYGGE TWR 122.100	308.850	FARRIS APP (WEST) 134.050	FARRIS APP (EAST) 124.350		
TACAN RYG CH 82X	APP COURSE 280°	FAF ALT 2000	Descent GR 5.6%	MDA 570	THR ELEV 169	ALS 720 m	LDA 8011

CAUTION:

- a) MAX HOLDING SPEED 250 KIAS.
- b) FINAL OFFSET 13° NORTH OF RWY CENTERLINE.

IAF
59°24.23' N
011°11.79' E

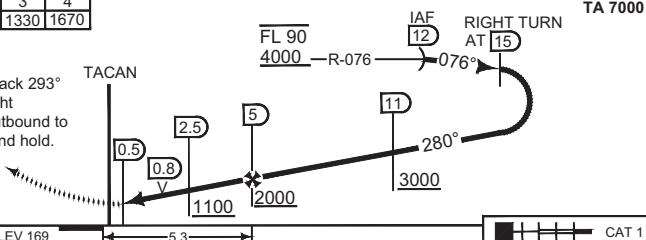


SAFE ALT 100 NM 8300

DME	1	2	3	4
ALT RYG	660	990	1330	1670

MISSED APPROACH

At 0.5 DME climb on track 293° to 1000 ft, then turn right and intercept R-076 outbound to IAF. Climb to 4000 ft and hold.



THR ELEV 169	5.3	CAT 1
--------------	-----	-------

CATEGORY	A	B	C	D	E
S-TAC 30	570 - 1200 401 (500-1.2/1.9)				
CIRCLING	670 - 2.3 497 (500-2.3)	680 - 2.4 507 (600-2.4)	860 - 3.2 687 (700-3.2)	910 - 3.6 737 (800-3.6)	1150 - 4.5 977 (1000-4.5)

TACAN RWY 30

59°22.73' N
010°47.13' E

RYGGE (ENRY)

CHANGES: MAGVAR, CAUTION, DIST/ALT TABLE, VDP, MINIMA, EDITORIAL

RINCAF 24 FEB 2022