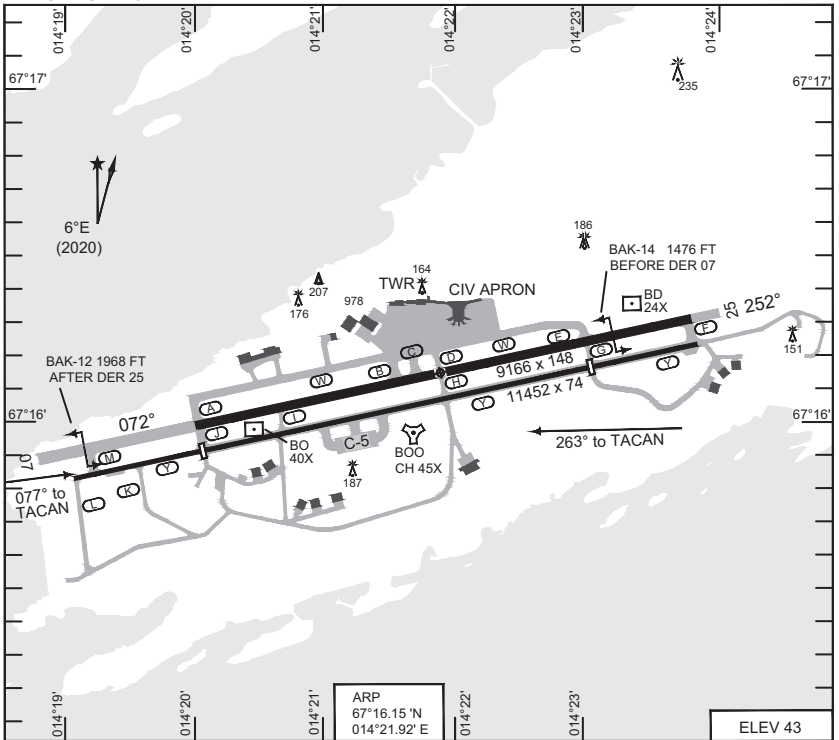


AERODROME CHART

BODOE (ENBO)



RWY	PCN	TORA	ASDA	TODA	LDA	PAPI	THR ELEV	THR PSN
07	65 R/B/X/U	9166*	9166*	10049*	9166	3.0°	19	67°16.00' N - 014°20.05' E
25	65 R/B/X/U	9166*	9166*	9166*	9166	3.5°	41	67°16.31' N - 014°23.84' E

Regarding use of TWY Y for T/O and landing, check local regulations.

*RWY extension between TWY M and J (1968 ft) may be used for T/O. This extension has no RWY strip or Runway End Safety Area (RESA). Declared distances (TORA, ASDA, TODA) do not include this extension.

Visiting MIL aircraft shall coordinate with Bodoë Base Operations prior to arrival. PPR for foreign MIL aircraft.

ATIS	123.900
DE-ICE	121.950
BODOE GND	121.750 358.475
BODOE TWR	118.100 398.650 257.800

CHANGES: MAGVAR, OBSTACLE

RNOAF 15 JUL 2021

AERODROME CHART

BODOE (ENBO)

**MIPS
INSTRUMENT DEPARTURE CHART**

**HPMA SALTY / HPMA BITNO DEP
BODOE (ENBO)**

AD ELEV 43

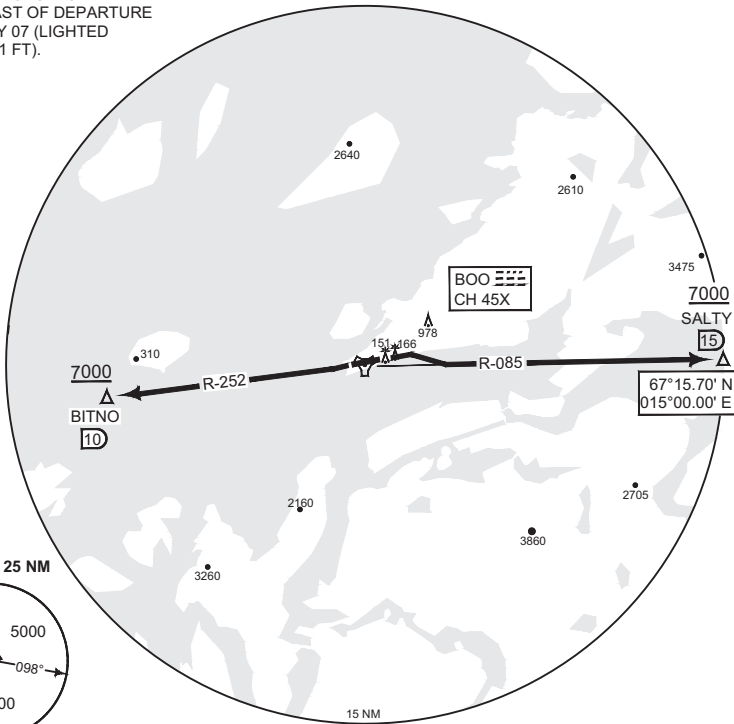
ATIS 123.900	BODOE GND 121.750 358.475	BODOE TWR 118.100 398.650	BODOE DEP 119.700 277.300
-----------------	------------------------------	------------------------------	------------------------------

POLARIS CONTROL

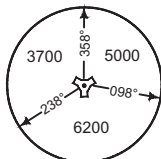
N 126.450 N 278.050 S 118.550 S 240.575

NOTE:

- a) CLOSE IN OBSTACLE
550 M EAST OF DEPARTURE
END RWY 07 (LIGHTED
MAST 151 FT).



MSA BOO 25 NM



SAFE ALT 100 NM 9200

TA 7000

HPMA SALTY
(RWY 07)

- Climb on track 072°.
- Passing 500 ft, turn right to intercept BOO R-085 outbound and continue climb to 7000 ft.
- Proceed to SALTY.

HPMA BITNO
(RWY 25)

- Climb outbound on R-252 to 7000 ft.
- Proceed to BITNO.

When instructed by Bodoë TWR, contact DEP 119.700 or 277.300

CHANGES: MAGVAR, EDITORIAL

RNOCAF 15 JUL 2021

HPMA SALTY / HPMA BITNO DEP

67°16.15' N
014°21.92' E

BODOE (ENBO)

MIPS INSTRUMENT APPROACH CHART

AD ELEV 43

HPMA ILS or LOC RWY 07 BODOE (ENBO)

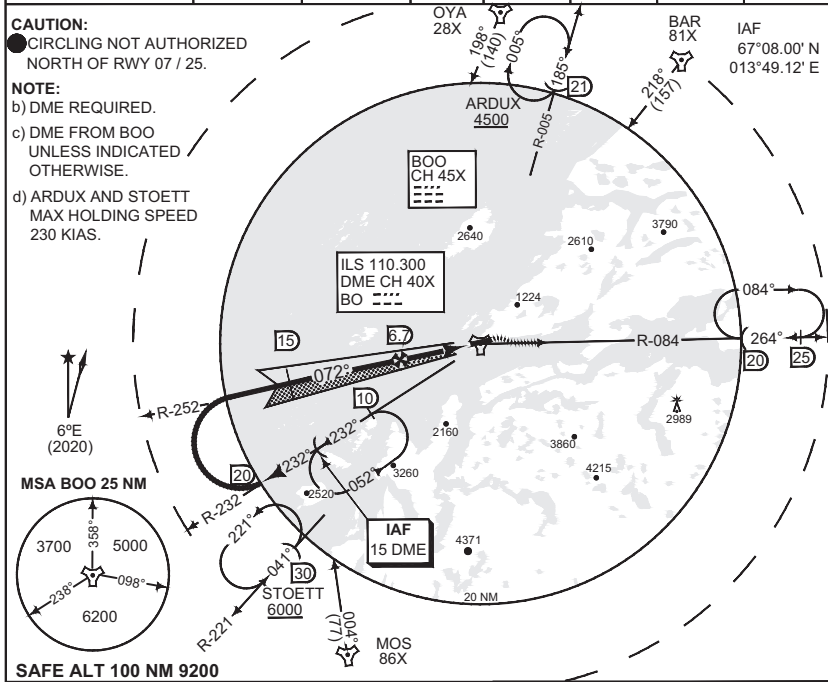
ATIS 123.900		BODOE APP 119.700 124.000 277.300 259.025			BODOE TWR 118.100 398.650 257.800			BODOE GND 121.750 358.475	
ILS/DME BO 110.300 / CH 40X		APP COURSE 072°	GS INTCP ALT 2000	GS 3.0°	DA 246	THR ELEV 19	ALS 900 m	LDA 9166	

CAUTION:

● CIRCLING NOT AUTHORIZED NORTH OF RWY 07 / 25.

NOTE:

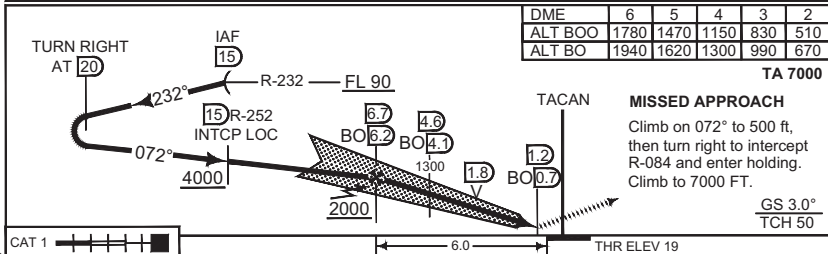
- b) DME REQUIRED.
- c) DME FROM BOO UNLESS INDICATED OTHERWISE.
- d) ARDUX AND STOETT MAX HOLDING SPEED 230 KIAS.



SAFE ALT 100 NM 9200

DME	6	5	4	3	2
ALT BOO	1780	1470	1150	830	510
ALT BO	1940	1620	1300	990	670

TA 7000



MISSED APPROACH

Climb on 072° to 500 ft, then turn right to intercept R-084 and enter holding. Climb to 7000 FT.

CHANGES: DIST/ALT TABLE

MIPS	CATEGORY	HPMA	
	S-ILS 07	246	- 0.8 227 (300 - 0.8/1.6)
	S-LOC 07	410	- 1.6 391 (400 - 1.6/2.4)
● CIRCLING		1090	- 3.2 1047 (1100 - 3.2)

HPMA ILS or LOC RWY 07

67°16.15' N
014°21.92' E

BODOE (ENBO)

RNAIF 09 SEP 2021

MIPS
INSTRUMENT APPROACH CHART

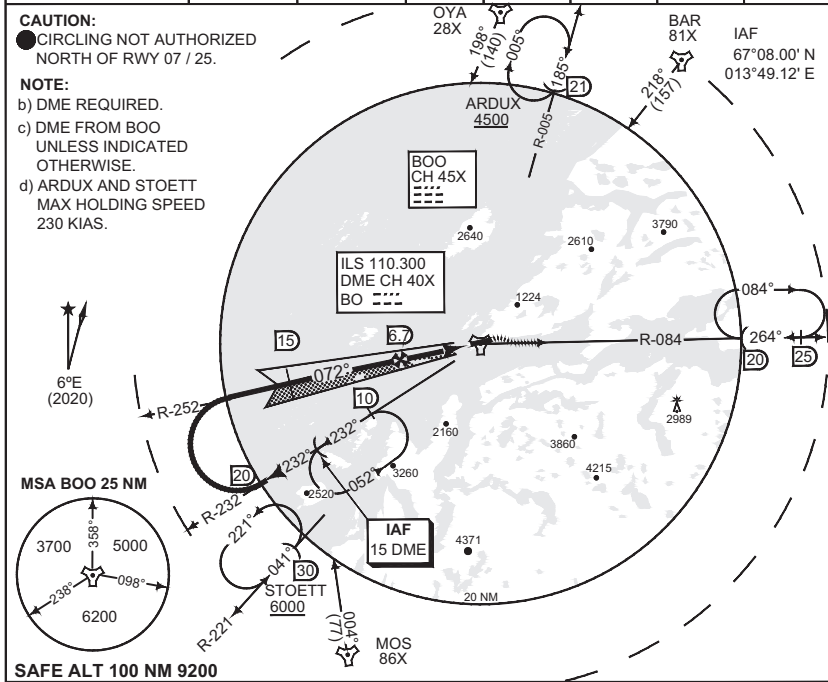
AD ELEV 43

ILS M or LOC M RWY 07
BODOE (ENBO)

BODOE APP				BODOE TWR			BODOE GND	
ATIS 123.900	119.700	124.000	277.300 259.025	118.100	398.650	257.800	121.750	358.475
ILS/DME BO 110.300 / CH 40X		APP COURSE 072°	GS INTCP ALT 2000	GS 3.0°	DA SEE CAT	THR ELEV 19	ALS 900 m	LDA 9166

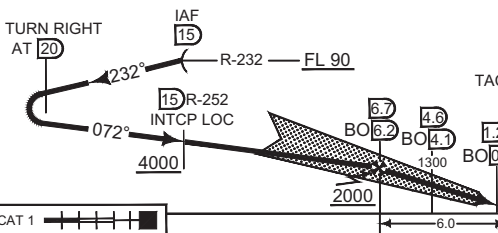
CAUTION:
● CIRCLING NOT AUTHORIZED
NORTH OF RWY 07 / 25.

NOTE:
b) DME REQUIRED.
c) DME FROM BOO
UNLESS INDICATED
OTHERWISE.
d) ARDUX AND STOETT
MAX HOLDING SPEED
230 KIAS.



SAFE ALT 100 NM 9200

DME	6	5	4	3	2
ALT BOO	1780	1470	1150	830	510
ALT BO	1940	1620	1300	990	670



TA 7000
MISSED APPROACH
Climb on RWY track. Passing 500 ft, turn right (MAX 185 KIAS) and intercept R-084. Climb to 7000 ft. Passing BOO 20 DME or 5300 ft whichever occurs last, turn left and enter holding.
GS 3.0°
TCH 50

CAT 1	6.0			THR ELEV 19
CATEGORY	B	C	D	
S-ILS 07	380 - 1.0 361 (400 - 1.0/1.7)	390 - 1.0 371 (400 - 1.0/1.7)	400 - 1.1 381 (400 - 1.1/1.8)	
S-LOC 07	410 - 1.1 391 (400 - 1.1/1.8)	410 - 1.1 391 (400 - 1.1/1.8)	410 - 1.2 391 (400 - 1.1/1.8)	
● CIRCLING	1090 - 4.9 1047 (1100 - 4.9)	1300 - 5.0 1257 (1300 - 5.0)	1300 - 5.0 1257 (1300 - 5.0)	

ILS M or LOC M RWY 07

67°16.15' N
014°21.92' E

BODOE (ENBO)

CHANGES: DIST/ALT TABLE

RNAV 09 SEP 2021

MIPS INSTRUMENT APPROACH CHART

AD ELEV 43

HPMA TACAN RWY 07 BODOE (ENBO)

ATIS 123.900	BODOE APP 119.700 124.000 277.300 259.025	BODOE TWR 118.100 398.650 257.800	BODOE GND 121.750 358.475
-----------------	--	--------------------------------------	------------------------------

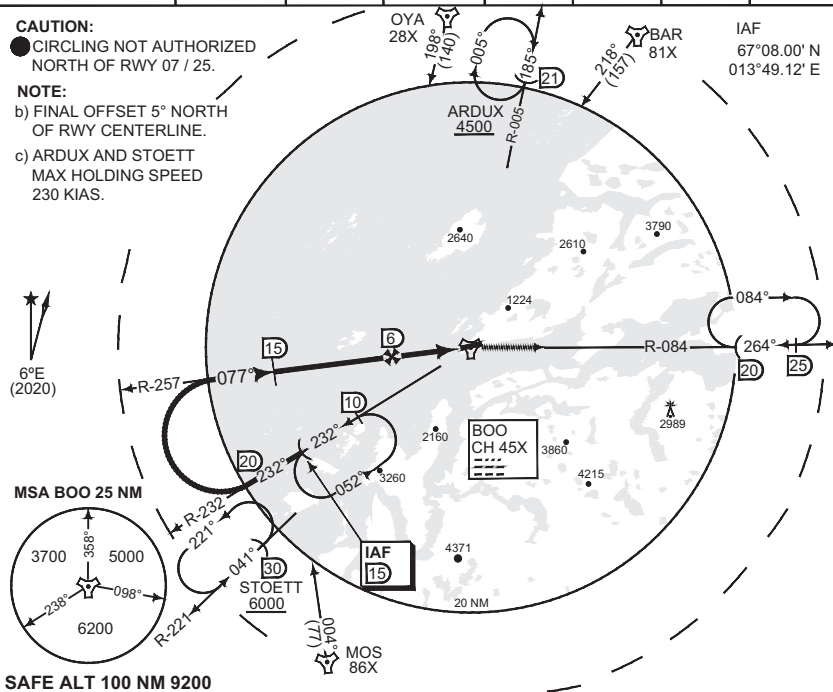
TACAN BOO CH 45X	APP COURSE 077°	FAF ALT 1800	Descent GR 5.3%	MDA 390	THR ELEV 19	ALS 900 m	LDA 9166
---------------------	--------------------	-----------------	--------------------	------------	----------------	--------------	-------------

CAUTION:

● CIRCLING NOT AUTHORIZED NORTH OF RWY 07 / 25.

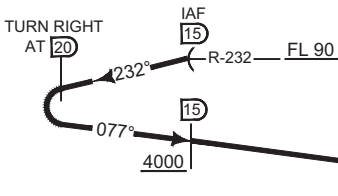
NOTE:

- b) FINAL OFFSET 5° NORTH OF RWY CENTERLINE.
- c) ARDUX AND STOETT MAX HOLDING SPEED 230 KIAS.



DME BOO	6	5	4	3	2
ALT	1800	1480	1160	840	510

TA 7000



At 1.5 DME climb on 077° to BOO, then R-084 outbound and enter holding. Climb to 7000 FT

CAT 1	5.4	THR ELEV 19
-------	-----	-------------

CATEGORY	HPMA
----------	------

S-TAC 07	390 - 1.2 371 (400-1.2/2.0)
----------	-----------------------------

● CIRCLING	1090 - 3.2 1047 (1100-3.2)
------------	----------------------------

HPMA TACAN RWY 07

67°16.15' N
014°21.92' E

BODOE (ENBO)

CHANGES: MAGVAR

RNOAF 15 JUL 2021

MIPS
INSTRUMENT APPROACH CHART

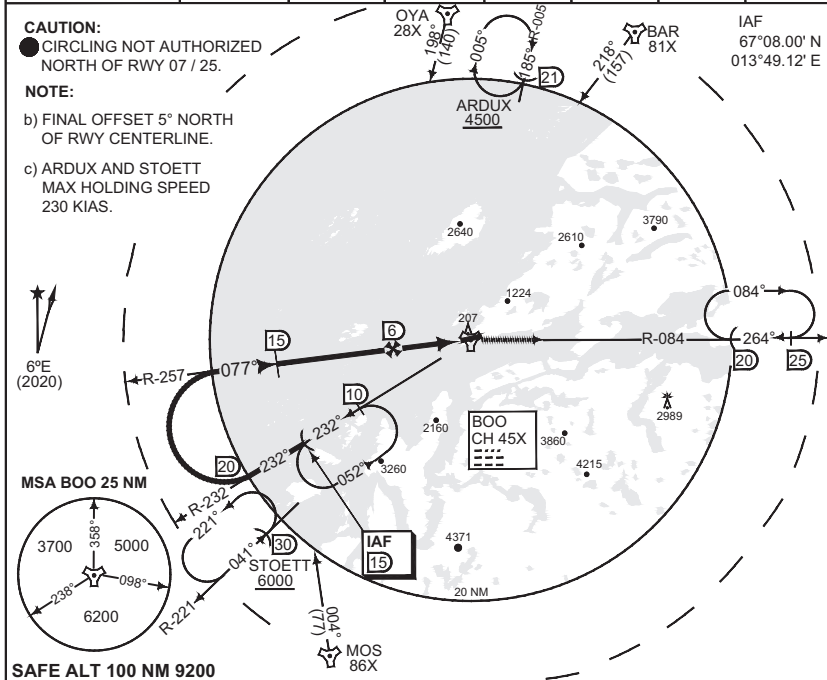
AD ELEV 43

TACAN RWY 07
BODOE (ENBO)

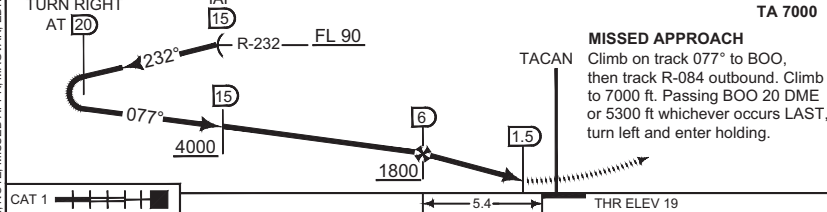
ATIS 123.900	BODOE APP 119.700 124.000 277.300 259.025			BODOE TWR 118.100 398.650 257.800			BODOE GND 121.750 358.475	
TACAN BOO CH 45X	APP COURSE 077°	FAF ALT 1800	Descent GR 5.3%	MDA 460	THR ELEV 19	ALS 900 m	LDA 9166	

CAUTION:
● CIRCLING NOT AUTHORIZED
NORTH OF RWY 07 / 25.

- NOTE:**
- b) FINAL OFFSET 5° NORTH OF RWY CENTERLINE.
 - c) ARDUX AND STOETT MAX HOLDING SPEED 230 KIAS.



SAFE ALT 100 NM 9200	DME BOO	5	4	3	2
	ALT	1480	1160	840	510



CATEGORY	B	C	D
S-TAC 07	460 - 0.8 441 (500-0.8/1.6)	460 - 1.2 441 (500-1.2/2.0)	460 - 1.6 441 (500-1.6/2.4)
● CIRCLING	1090 - 2.8 1047 (1100-2.8)	1300 - 3.7 1257 (1300-3.7)	1300 - 4.6 1257 (1300-4.6)

TACAN RWY 07 67°16.15' N
014°21.92' E **BODOE (ENBO)**

CHANGES: ALT/DIST TABLE, NOTE, MISSED APPR, MAGVAR, EDITORIAL

RNGAF 15 JUL 2021

MIPS
INSTRUMENT APPROACH CHART

AD ELEV 43

HPMA ILS or LOC RWY 25
BODOE (ENBO)

ATIS 123.900		BODOE APP 119.700 124.000 277.300 259.025			BODOE TWR 118.100 398.650 257.800			BODOE GND 121.750 358.475	
-----------------	--	--	--	--	--------------------------------------	--	--	------------------------------	--

ILS/DME BD 108.700 / CH 24X	APP COURSE 262°	GS INTCP ALT 3000	GS 3.5°	DA 493	THR ELEV 40	ALS 750 m	LDA 9166
--------------------------------	--------------------	----------------------	------------	-----------	----------------	--------------	-------------

WARNING:

a) LOCALIZER OFFSET 10° SOUTH OF RWY CENTERLINE.

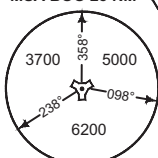
CAUTION:

- CIRCLING NOT AUTHORIZED NORTH OF RWY 25 / 07.
- c) STEEP INTERMEDIATE SEGMENT FROM BOO 14.1 DME TO FAF (3.5°).

NOTE:

- d) DME REQUIRED.
- e) DME FROM BOO. UNLESS INDICATED OTHERWISE.
- f) BALAK AND ROSVI MAX HOLDING SPEED 230 KIAS.
- g) VSS PENETRATED S OF FINAL 0.3 NM FM THR 25.

MSA BOO 25 NM



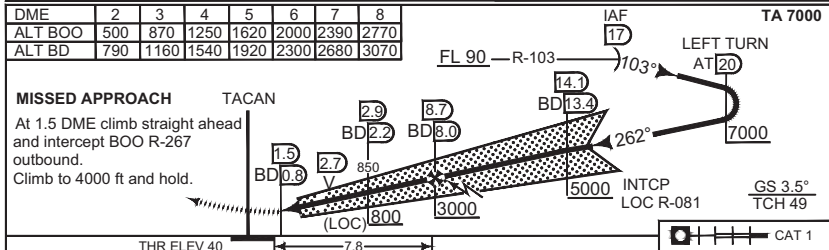
SAFE ALT 100 NM 9200

DME	2	3	4	5	6	7	8
ALT BOO	500	870	1250	1620	2000	2390	2770
ALT BD	790	1160	1540	1920	2300	2680	3070

MISSED APPROACH

At 1.5 DME climb straight ahead and intercept BOO R-267 outbound. Climb to 4000 ft and hold.

TACAN



CATEGORY	HPMA
S-ILS 25	493 - 1.4 453 (500 - 1.4/2.1)
S-LOC 25	750 - 3.2 710 (800 - 3.2/4.0)
● CIRCLING	1090 - 3.2 1047 (1100 - 3.2)

HPMA ILS or LOC RWY 25

67°16.15' N
014°21.92' E

BODOE (ENBO)

CHANGES: DISTALT TABLE

RNAIF 09 SEP 2021

MIPS
INSTRUMENT APPROACH CHART

AD ELEV 43

ILS M or LOC M RWY 25
BODOE (ENBO)

ATIS		BODOE APP			BODOE TWR		BODOE GND	
123.900	119.700	124.000	277.300	259.025	118.100	398.650	257.800	121.750 358.475

ILS/DME	APP COURSE	GS INTCP ALT	GS	DA	THR ELEV	ALS	LDA
BD 108.700 / CH 24X	262°	3000	3.5°	SEE CAT	41	750 m	9166

WARNING:

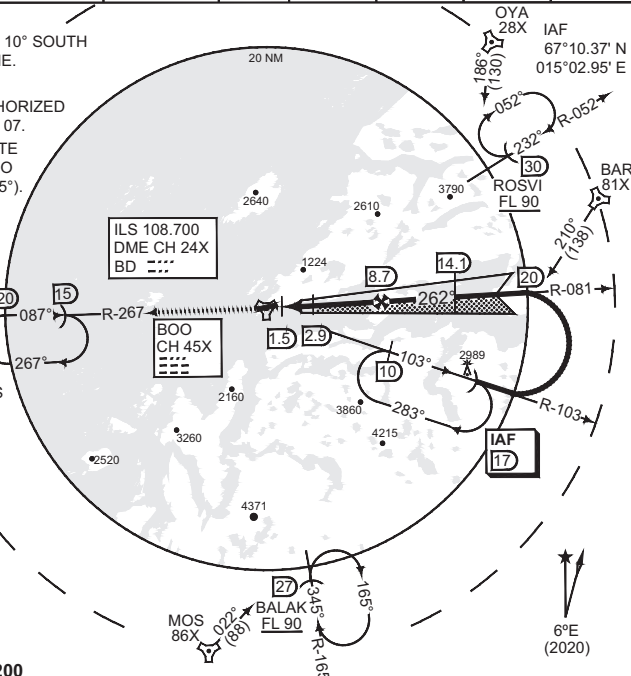
a) LOCALIZER OFFSET 10° SOUTH OF RWY CENTERLINE.

CAUTION:

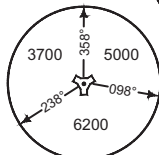
- CIRCLING NOT AUTHORIZED NORTH OF RWY 25 / 07.
- c) STEEP INTERMEDIATE SEGMENT FROM BOO 14.1 DME TO FAF (3.5°).

NOTE:

- d) DME REQUIRED.
- e) DME FROM BOO. UNLESS INDICATED OTHERWISE.
- f) BALAK AND ROSVI MAX HOLDING SPEED 230 KIAS.
- g) VSS PENETRATED S OF FINAL 0.3 NM FM THR 25.



MSA BOO 25 NM

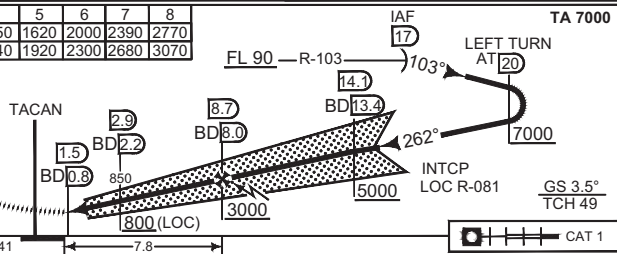


SAFE ALT 100 NM 9200

DME	2	3	4	5	6	7	8
ALT BOO	500	870	1250	1620	2000	2390	2770
ALT BD	790	1160	1540	1920	2300	2680	3070

MISSED APPROACH

At 1.5 DME climb straight ahead and intercept BOO R-267 outbound. Climb to 4000 ft and hold.



CHANGES: DISTALT TABLE

CATEGORY	B		C		D	
S-ILS 25	388	- 0.8 347 (400 - 0.8/1.2)	452	- 1.2 411 (500 - 1.2/2.0)	518	- 1.6 477 (500 - 1.6/2.4)
S-LOC 25	640	- 0.8 599 (600 - 0.8/1.6)	690	- 2.0 649 (700 - 2.0/2.8)	750	- 2.8 709 (700 - 2.8/3.6)
● CIRCLING	1090	- 2.4 1047 (1100 - 2.4)	1300	- 3.7 1257 (1300 - 3.7)	1300	- 4.6 1257 (1300 - 4.6)

ILS M or LOC M RWY 25

67°16.15' N
014°21.92' E

BODOE (ENBO)

RNAIF 09 SEP 2021

MIPS
INSTRUMENT APPROACH CHART

AD ELEV 43

HPMA TACAN A
BODOE (ENBO)

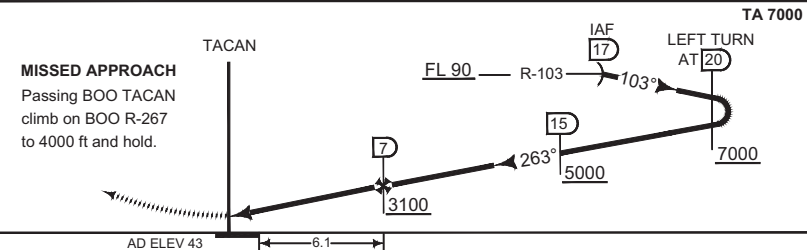
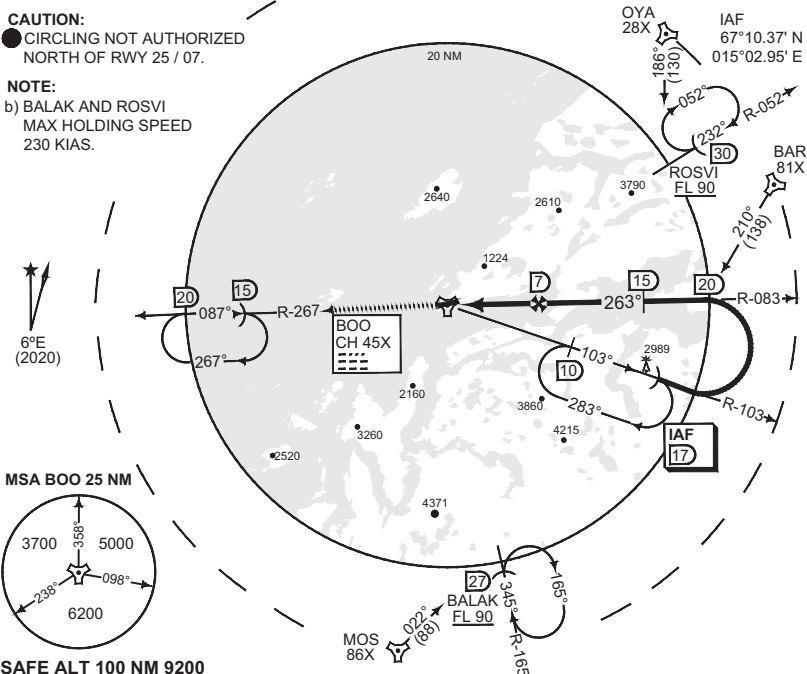
ATIS 123.900	BODOE APP 119.700 124.000 277.300 259.025			BODOE TWR 118.100 398.650 257.800		BODOE GND 121.750 358.475	
TACAN BOO CH 45X	APP COURSE 263°	FAF ALT 3100		MDA 1090			

CAUTION:

● CIRCLING NOT AUTHORIZED
NORTH OF RWY 25 / 07.

NOTE:

b) BALAK AND ROSVI
MAX HOLDING SPEED
230 KIAS.



CATEGORY	HPMA
● CIRCLING	1090 - 3.2 1047 (1100 - 3.2)

HPMA TACAN A

67°16.15' N
014°21.92' E

BODOE (ENBO)

CHANGES: MAGVAR
MIPS

FRNOAF 15 JUL 2021

