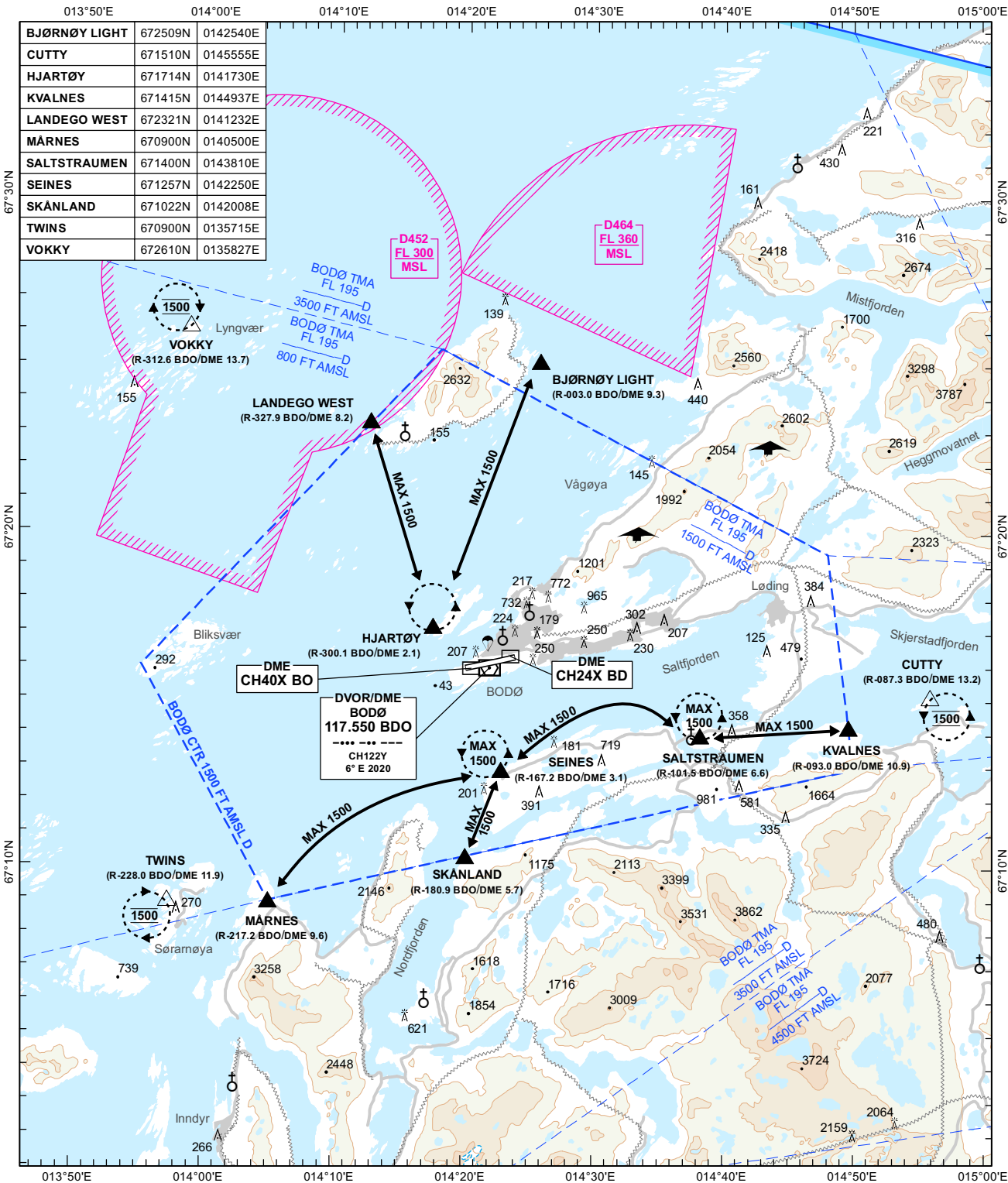


VAC - VISUAL APPROACH CHART PLAN VIEW SCALE:1:325 000

ATIS: 123.900	AERODROME ELEVATION: 44 FT	ELEV, ALT AND HGT IN FT	<b>BODØ</b> <b>BODØ</b> <b>NORWAY</b>
APP: 119.700	OBSTACLES LESS THAN 100 FT GND ARE NORMALLY NOT SHOWN		
TWR: 118.100	MAGNETIC VARIATION: 6° E (2020)		
	TRANSITION ALTITUDE: 7000	ONLY MAJOR POWER LINES SHOWN	



CHANGES: COMPLETE REVISION.

**VFR RCF PROC**  
 1. SQUAWK 7600.  
 2. PROCEED VIA ESTABLISHED VFR-ROUTES TO HJARTØY (FROM N) OR SEINES (FROM S).  
 3. ENTER HOLDING MAINTAINING 700 FT AND FLASH LDG LGT.  
 4. WATCH TWR FOR VISUAL SIGNALS.

**AIR SPORT AREA**  
 OUTSIDE CTR: 3500 FT AMSL - GND.  
 INSIDE CTR: 2000 FT AMSL - GND.  
 CHECK ACTIVE WITH TWR/APP OR ATIS.  
**ALSO SEE ENR 5.5**

**WARNING**  
 TURBULENCE AND STRONG WINDS FROM E/SE FREQUENTLY REPORTED ALONG COASTLINE NORTH OF BODØ.  
 PAPI RWY 07: 3.0° MEHT 54 FT.  
 PAPI RWY 25: 3.5° MEHT 47 FT.

