



Performance



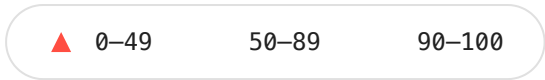
Accessibility



Best Practices



SEO



Performance

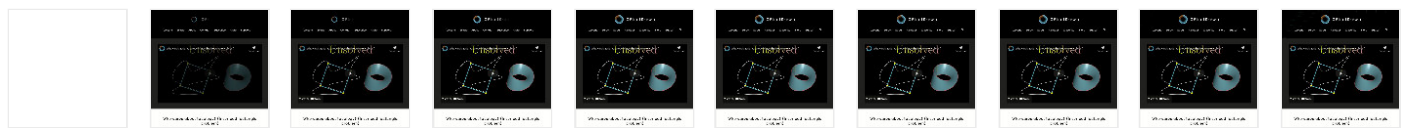
Metrics



First Contentful Paint	0.8 s	Time to Interactive	2.4 s
Speed Index	1.2 s	Total Blocking Time	170 ms
Largest Contentful Paint	2.0 s	Cumulative Layout Shift	0.044

Values are estimated and may vary. The [performance score is calculated](#) directly from these metrics. [See calculator.](#)

[View Original Trace](#)



Opportunities — These suggestions can help your page load faster. They don't [directly affect](#) the Performance score.

Opportunity	Estimated Savings
Properly size images	0.24 s

Diagnostics — More information about the performance of your application. These numbers don't [directly affect](#) the Performance score.

▲ Ensure text remains visible during webfont load

Warnings:

- Lighthouse was unable to automatically check the `font-display` value for the origin <https://fonts.gstatic.com>.
- Lighthouse was unable to automatically check the `font-display` value for the origin <https://c.disquscdn.com>.

▲ Some third-party resources can be lazy loaded with a facade — 1 facade alternative available	▼
▲ Does not use passive listeners to improve scrolling performance	▼
▲ Avoid an excessive DOM size — 2,030 elements	▼
▲ Serve static assets with an efficient cache policy — 8 resources found	▼
Minimize main-thread work — 2.7 s	▼
Avoid chaining critical requests — 9 chains found	▼
User Timing marks and measures — 5 user timings	▼
Keep request counts low and transfer sizes small — 122 requests • 2,149 KiB	▼
Largest Contentful Paint element — 1 element found	▼
Avoid large layout shifts — 5 elements found	▼
Avoid long main-thread tasks — 9 long tasks found	▼
Avoid non-composited animations — 104 animated elements found	▼
Passed audits (23)	▼



Accessibility

These checks highlight opportunities to [improve the accessibility of your web app](#). Only a subset of accessibility issues can be automatically detected so manual testing is also encouraged.

Names and labels — These are opportunities to improve the semantics of the controls in your application. This may enhance the experience for users of assistive technology, like a screen reader.

▲ Buttons do not have an accessible name	▼
▲ <code><frame></code> or <code><iframe></code> elements do not have a title	▼
▲ Image elements do not have <code>[alt]</code> attributes	▼
▲ Links do not have a discernible name	▼

Contrast — These are opportunities to improve the legibility of your content.

▲ Background and foreground colors do not have a sufficient contrast ratio.	▼
---	---

Internationalization and localization — These are opportunities to improve the interpretation of your content by users in different locales.

▲ `<html>` element does not have a `[lang]` attribute



Additional items to manually check (10) — These items address areas which an automated testing tool cannot cover.



Learn more in our guide on [conducting an accessibility review](#).

Passed audits (19)



Not applicable (19)



Best Practices

General

▲ Browser errors were logged to the console



▲ Issues were logged in the `Issues` panel in Chrome Devtools



Passed audits (15)



Not applicable (1)



SEO

These checks ensure that your page is optimized for search engine results ranking. There are additional factors Lighthouse does not check that may affect your search ranking. [Learn more](#).

Content Best Practices — Format your HTML in a way that enables crawlers to better understand your app's content.

▲ Image elements do not have `[alt]` attributes



Additional items to manually check (1) — Run these additional validators on your site to check additional SEO best practices.



Passed audits (9)**Not applicable (4)**

Runtime Settings

URL	https://3blue1brown.netlify.app/lessons/inscribed-rectangle-problem
Fetch Time	Jun 22, 2021, 9:40 PM MDT
Device	Emulated Desktop
Network throttling	40 ms TCP RTT, 10,240 Kbps throughput (Simulated)
CPU throttling	1x slowdown (Simulated)
Channel	devtools
User agent (host)	Mozilla/5.0 (Macintosh; Intel Mac OS X 10_15_7) AppleWebKit/537.36 (KHTML, like Gecko) Chrome/91.0.4472.114 Safari/537.36
User agent (network)	Mozilla/5.0 (Macintosh; Intel Mac OS X 10_14_6) AppleWebKit/537.36 (KHTML, like Gecko) Chrome/90.0.4420.0 Safari/537.36 Chrome-Lighthouse
CPU/Memory Power	1794
Axe version	4.1.2

Generated by **Lighthouse** 7.2.0 | [File an issue](#)