



Performance



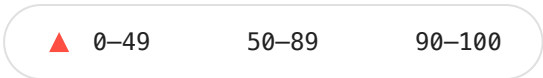
Accessibility



Best Practices



SEO



Performance

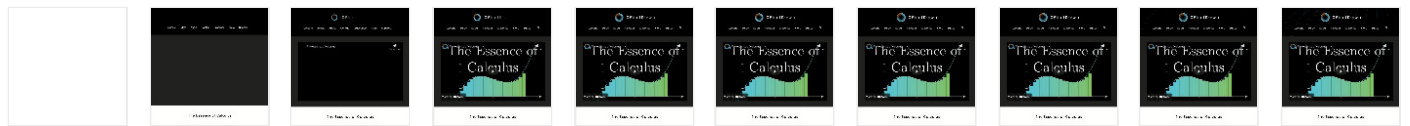
Metrics



First Contentful Paint	1.1 s	Time to Interactive	1.8 s
Speed Index	1.5 s	Total Blocking Time	130 ms
Largest Contentful Paint	1.1 s	Cumulative Layout Shift	0.02

Values are estimated and may vary. The [performance score is calculated](#) directly from these metrics. [See calculator.](#)

[View Original Trace](#)



Diagnostics — More information about the performance of your application. These numbers don't [directly affect](#) the Performance score.

- ▲ Avoid an excessive DOM size — 4,816 elements
- ▲ Ensure text remains visible during webfont load
- Warnings:**
 - Lighthouse was unable to automatically check the `font-display` value for the origin <https://fonts.gstatic.com>.
 - Lighthouse was unable to automatically check the `font-display` value for the origin <https://c.disquscdn.com>.
- ▲ Some third-party resources can be lazy loaded with a facade — 1 facade alternative available
- ▲ Does not use passive listeners to improve scrolling performance
- ▲ Serve static assets with an efficient cache policy — 22 resources found

Minimize main-thread work — 2.7 s	▼
Avoid chaining critical requests — 7 chains found	▼
User Timing marks and measures — 5 user timings	▼
Keep request counts low and transfer sizes small — 116 requests • 1,882 KiB	▼
Largest Contentful Paint element — 1 element found	▼
Avoid large layout shifts — 5 elements found	▼
Avoid long main-thread tasks — 4 long tasks found	▼
Avoid non-composited animations — 104 animated elements found	▼
Passed audits (24)	▼



Accessibility

These checks highlight opportunities to [improve the accessibility of your web app](#). Only a subset of accessibility issues can be automatically detected so manual testing is also encouraged.

Names and labels — These are opportunities to improve the semantics of the controls in your application. This may enhance the experience for users of assistive technology, like a screen reader.

▲ Buttons do not have an accessible name	▼
▲ <code><frame></code> or <code><iframe></code> elements do not have a title	▼
▲ Image elements do not have <code>[alt]</code> attributes	▼
▲ Form elements do not have associated labels	▼
▲ Links do not have a discernible name	▼

Contrast — These are opportunities to improve the legibility of your content.

▲ Background and foreground colors do not have a sufficient contrast ratio.	▼
-----------------------------------------------------------------------------	---

Internationalization and localization — These are opportunities to improve the interpretation of your content by users in different locales.

▲ <code><html></code> element does not have a <code>[lang]</code> attribute	▼
-----------------------------------------------------------------------------------	---

Additional items to manually check (10) — These items address areas which an automated testing tool cannot cover. Learn more in our guide on [conducting an accessibility review](#).

Passed audits (16) ▼

Not applicable (21) ▼



Best Practices

General

▲ Browser errors were logged to the console ▼

▲ Issues were logged in the [Issues](#) panel in Chrome Devtools ▼

Passed audits (15) ▼

Not applicable (1) ▼



SEO

These checks ensure that your page is optimized for search engine results ranking. There are additional factors Lighthouse does not check that may affect your search ranking. [Learn more](#).

Content Best Practices — Format your HTML in a way that enables crawlers to better understand your app's content.

▲ Image elements do not have `[alt]` attributes ▼

Additional items to manually check (1) — Run these additional validators on your site to check additional SEO best practices. ▼

Passed audits (9) ▼

Not applicable (4) ▼

Runtime Settings

URL	https://3blue1brown.netlify.app/lessons/essence-of-calculus
Fetch Time	Jun 22, 2021, 9:37 PM MDT
Device	Emulated Desktop
Network throttling	40 ms TCP RTT, 10,240 Kbps throughput (Simulated)
CPU throttling	1x slowdown (Simulated)
Channel	devtools
User agent (host)	Mozilla/5.0 (Macintosh; Intel Mac OS X 10_15_7) AppleWebKit/537.36 (KHTML, like Gecko) Chrome/91.0.4472.114 Safari/537.36
User agent (network)	Mozilla/5.0 (Macintosh; Intel Mac OS X 10_14_6) AppleWebKit/537.36 (KHTML, like Gecko) Chrome/90.0.4420.0 Safari/537.36 Chrome-Lighthouse
CPU/Memory Power	1776
Axe version	4.1.2

Generated by **Lighthouse** 7.2.0 | [File an issue](#)