

PDFCreator 4.4.2 documentation

[PREVIOUS](#) | [NEXT](#)

Migrating from PDFCreator 1.7 to 2.0

This section provides an overview of the differences between the COM Interfaces of the old PDFCreator (1.7.3 and below) and the new PDFCreator version, starting with PDFCreator 2.0. The two different workflows will be described shortly and compared to each other. The description below will not go into detail what each object is capable of doing (have a look at the different manuals if you are interested in knowing all the different methods and properties), instead the concentration will be on the main workflow, i.e. printing files and applying the desired settings. At the bottom of this page, a flow chart demonstrates the two different workflows visually.

Modularity

The old COM Interface (v1.7.*) consisted of three different objects: the `clsPDFCreator` object, the `clsPDFCreatorOptions` and the `clsPDFCreatorError`. The first object leads the main conversion process, e.g. it starts the actual conversion on a file, sets the printer, sets the options and so on. Whereas the second one just sets the different settings options that PDFCreator offers to its users. The third object is just for success/failure report.

In opposite to that, the new COM Interface (v2.*) has five different objects: the `Queue` object, the `PrintJob` object, the `PDFCreatorObj` object, the `Printers` object, the `OutputFiles` object. We will only focus on the first three since they define the main workflow. The `Queue` object acts as a container for all jobs that should be converted and you have full control over that container using the `Queue` object. Each of these jobs is in turn wrapped into the `PrintJob` object, which allows you to set up specific settings for different jobs such as under which conversion profile each job should be converted. The `PDFCreatorObj` object allows to retrieve information about the current instance of PDFCreator, i.e. if it is running or not, but also to print files.

Differences

As we saw above the whole conversion process has been divided into many objects instead of just one object as it was in the old version. This allows the developers to be more flexible, e.g. you can print a file, enqueue it and simply postpone the conversion process whenever you like. The `clsPDFCreator` object of the old version, i.e. v1.7.* did the printing, the queueing as well as the conversion. Now, these main functionalities have been divided into: `PDFCreatorObj` object doing the printing, the `Queue` object doing the queueing and the `PrintJob` object doing the actual conversion.

When you wanted to change the settings in the old version, you had to use the `clsPDFCreatorOptions` object or again the `clsPDFCreator` object and set the PDFCreator settings to the desired values. As a `clsPDFCreatorOptions` object was created you had to assign this object to the `clsPDFCreator` object's appropriate property. This kind of settings set up required to set the `autosave` property to the path that you wanted your file to be saved to. In the new version instead, the `PrintJob` object offers a method called `SetProfileSetting(string name, string value)` which allows to set different settings options. The key difference is that in the new version, the `PrintJob` object itself offers a `ConvertTo(string path)` method which has a new explicit workflow for the conversion of a file using the COM Interface. The old version just used the built-in `autosave` workflow, that's why it is not reasonable to have the possibility to set the `autosave` setting as well as some other settings options on the `PrintJob` object.

Since we are working with C# and the .Net framework there is no need for an explicit object for error handling, if something goes wrong an exception is being thrown right away similarly to normal C# programming.

Advantages

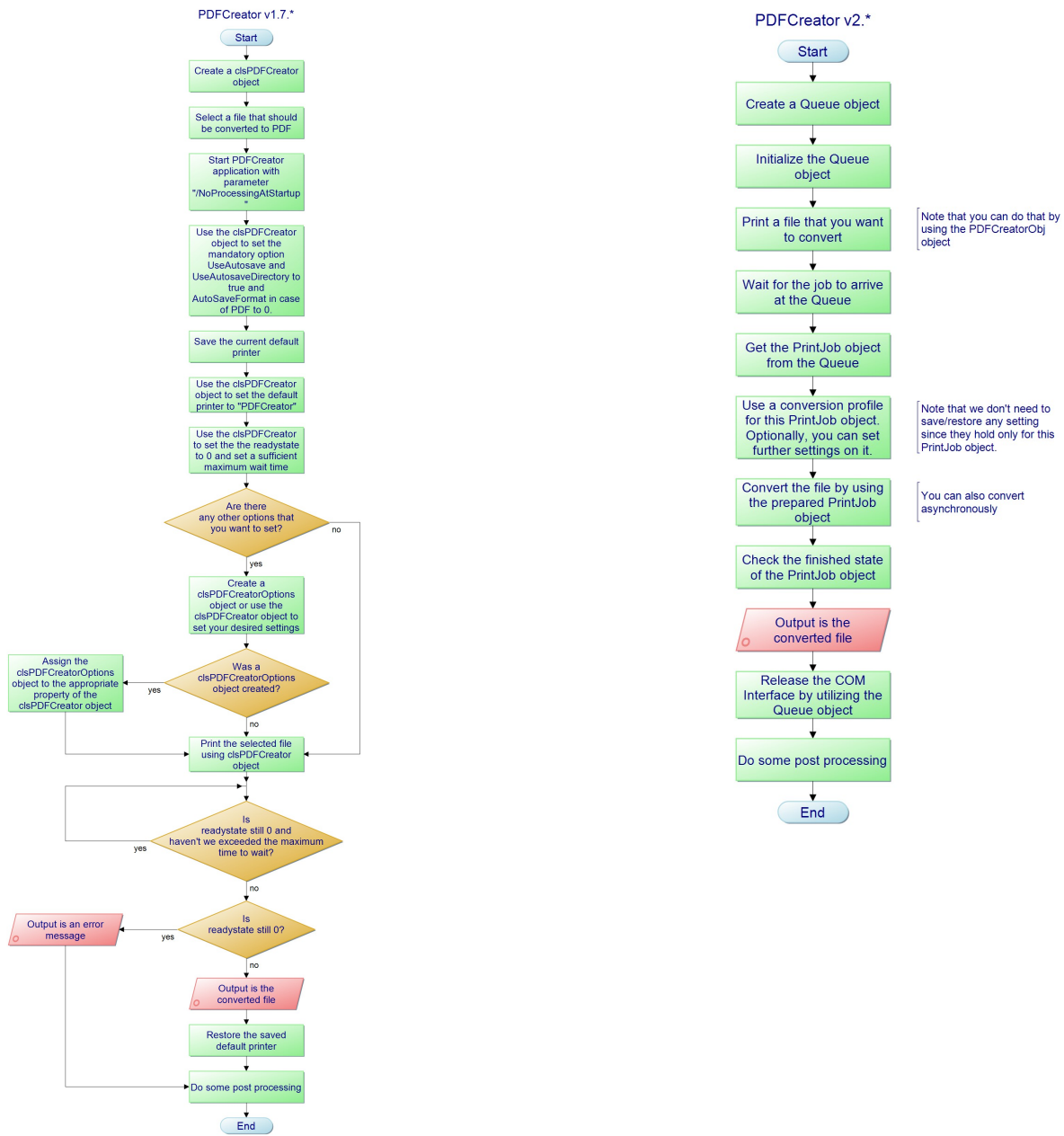
As mentioned above, the higher granularity of the new PDFCreator version makes a flexible use much easier. You could for instance wait for the arrival of 4 print jobs, after arriving let them wait in the queue and do other work of your software, then apply your desired settings to each individual print job and then again do a lot of your other work and eventually do the actual conversion.

The newest version of PDFCreator will always be compatible with older versions (greater or equal to v2.2).

Further, we will drop support for PDFCreator 1.7.3 and below shortly.

Workflow Comparison

Below, you can see a flow chart describing the COM workflows of PDFCreator 1.7.x and PDFCreator 2.x. As you can see, the new workflow is much simpler while providing you the same flexibility in what you can achieve.



PREVIOUS | NEXT

© Copyright 2022, pdfforge GmbH.