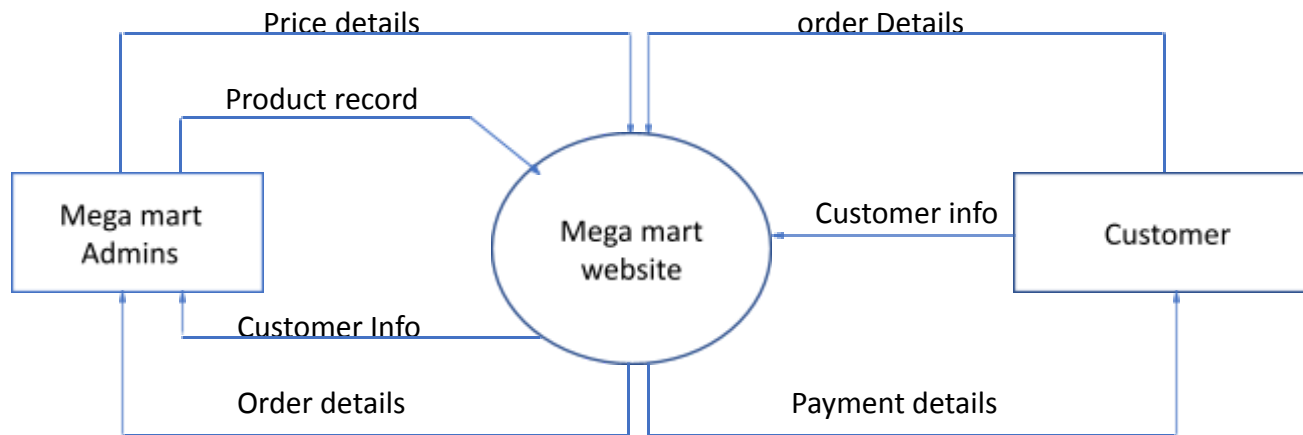


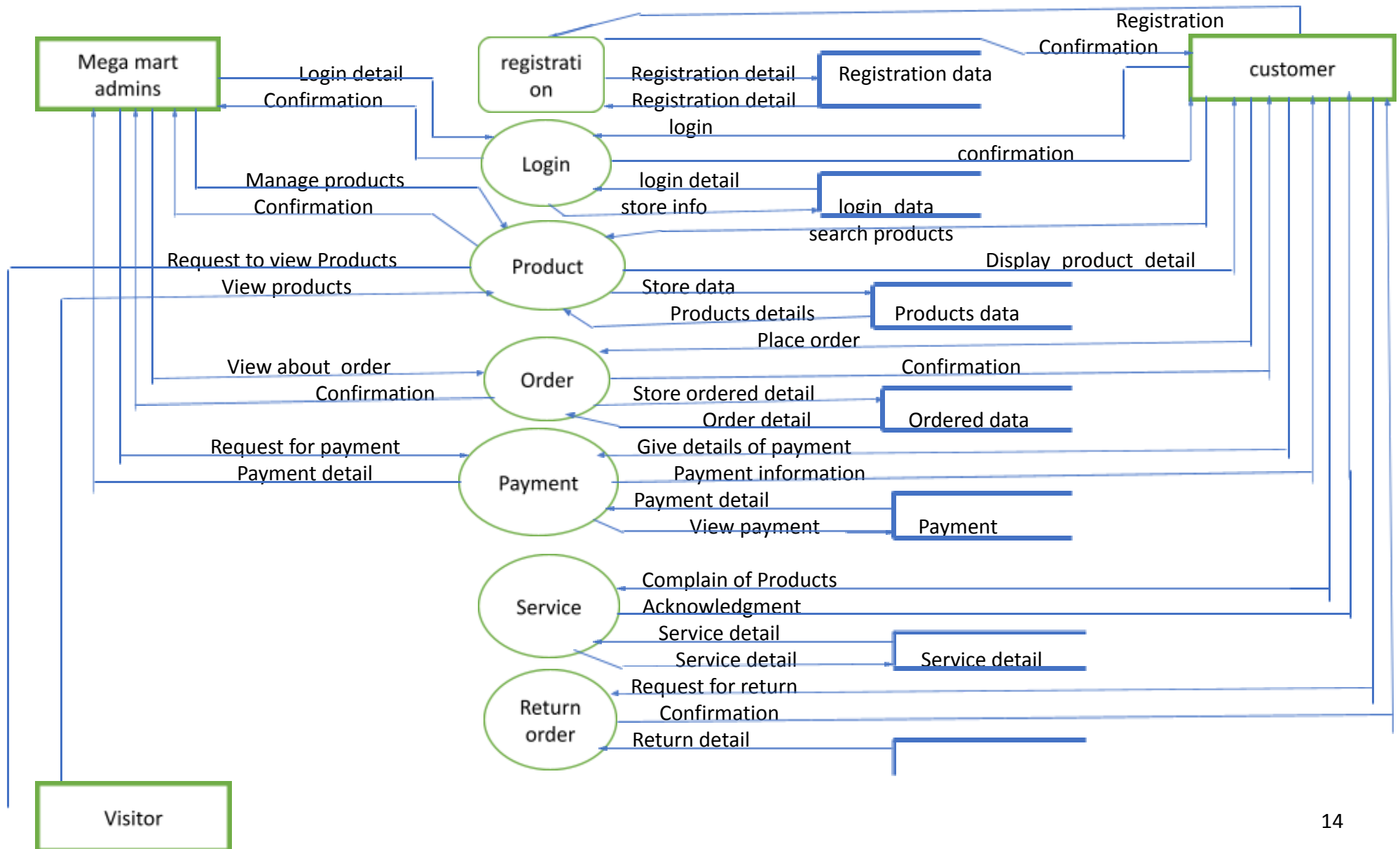
CHAPTER - 3

REQUIREMENT ANALYSIS AND MODELING

3.1 Data flow diagram level 0



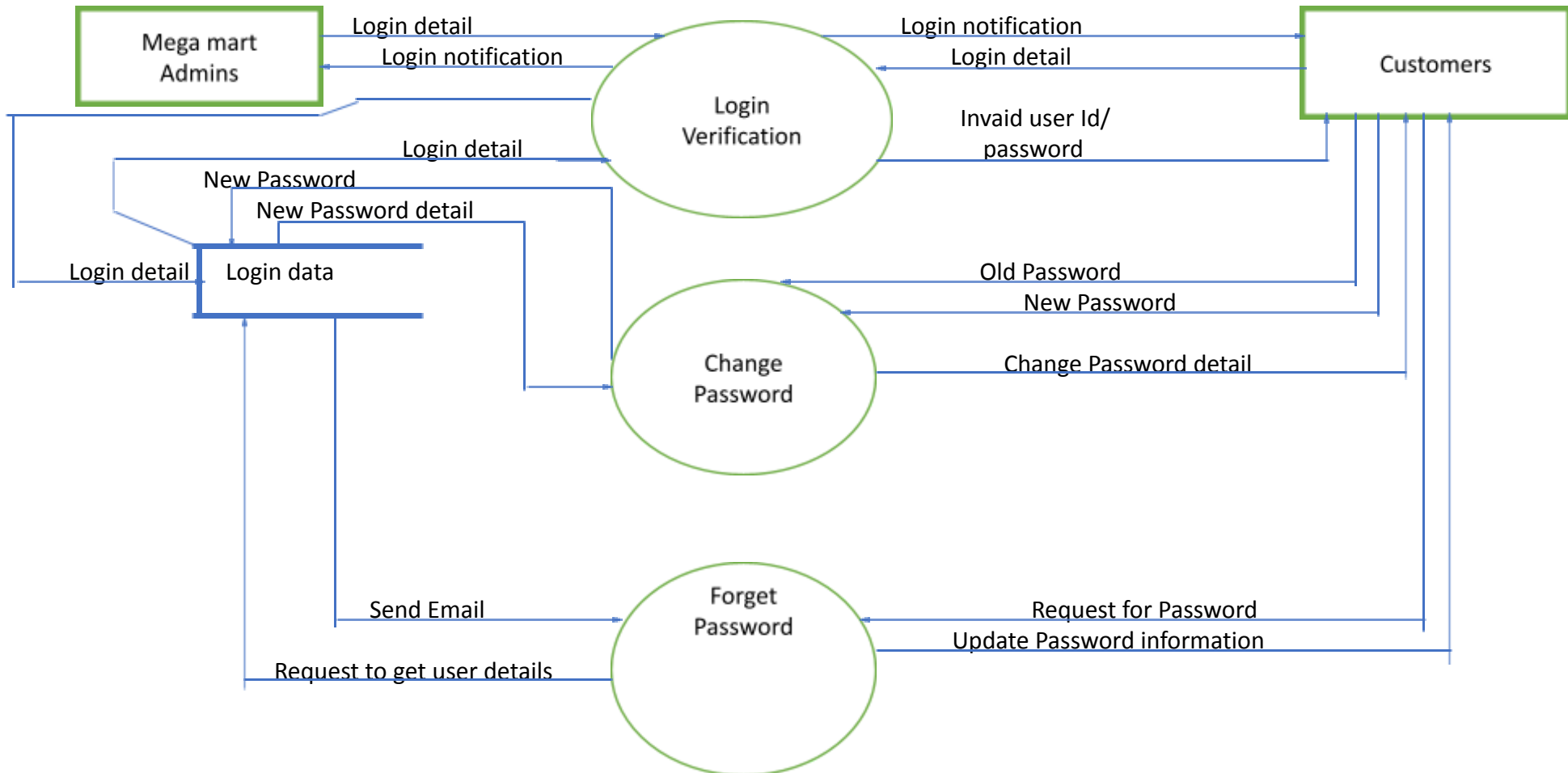
3.2 Data flow diagram level 1



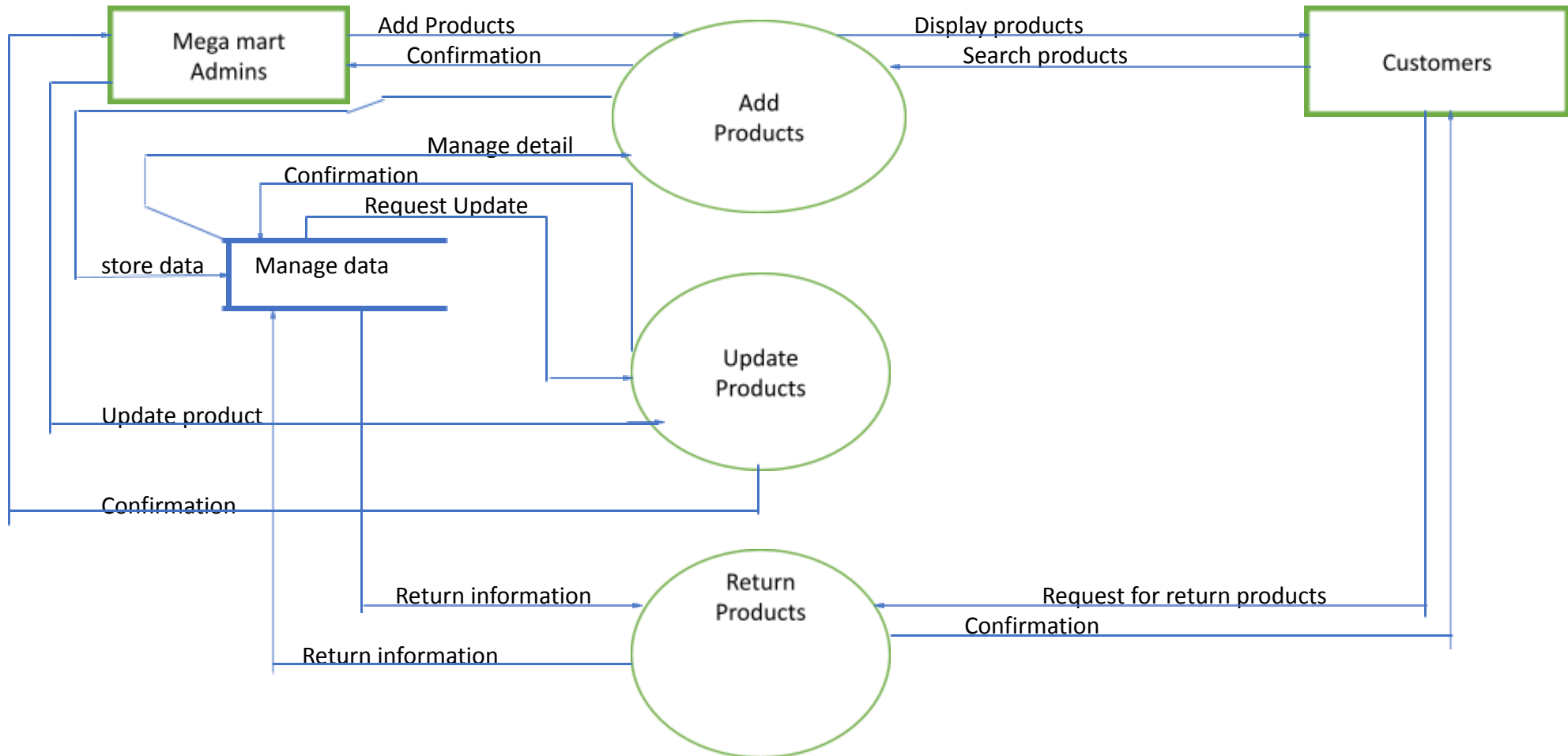
Return info Return

3.3 Data flow diagram level 2

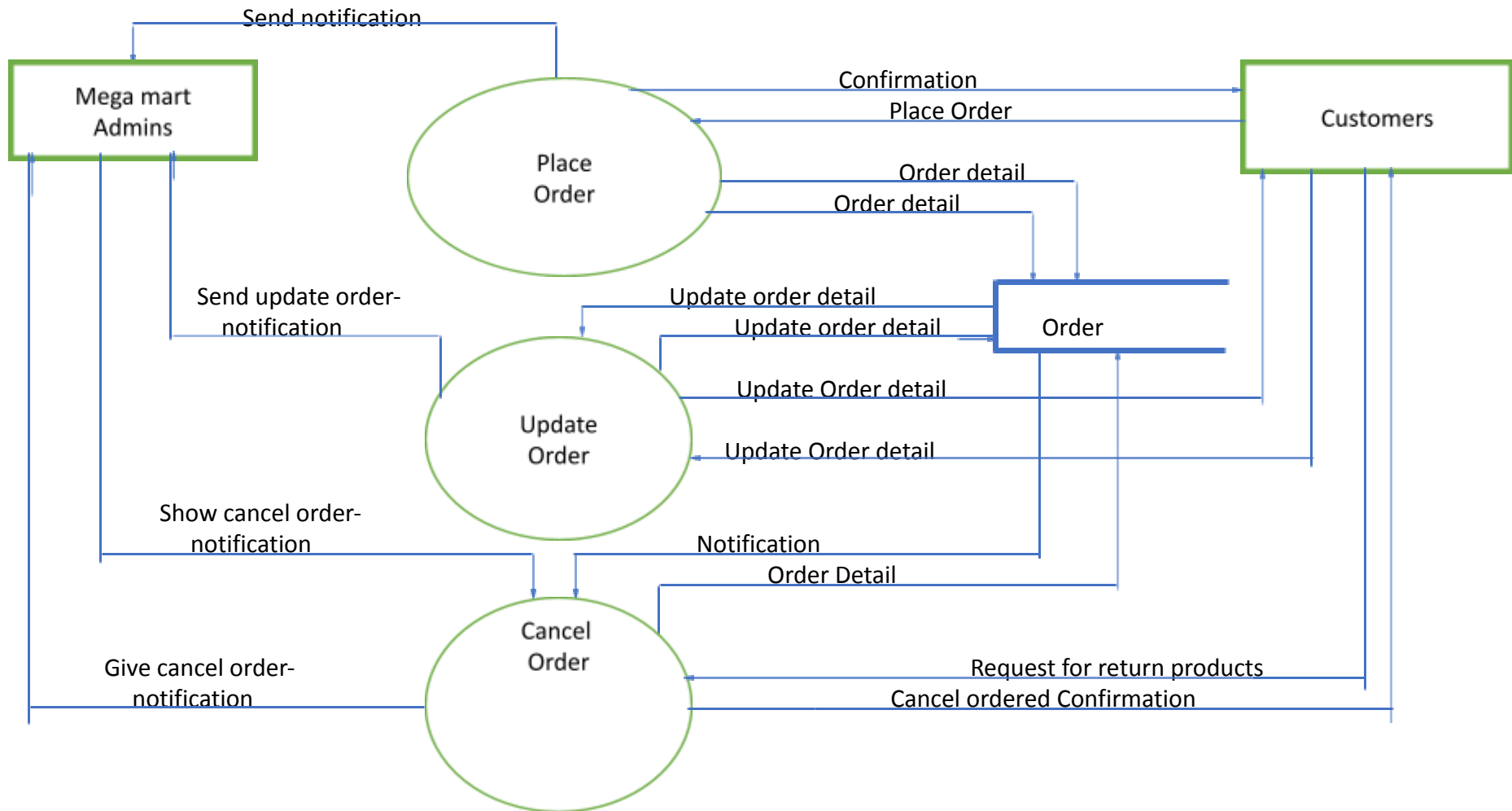
a. Login



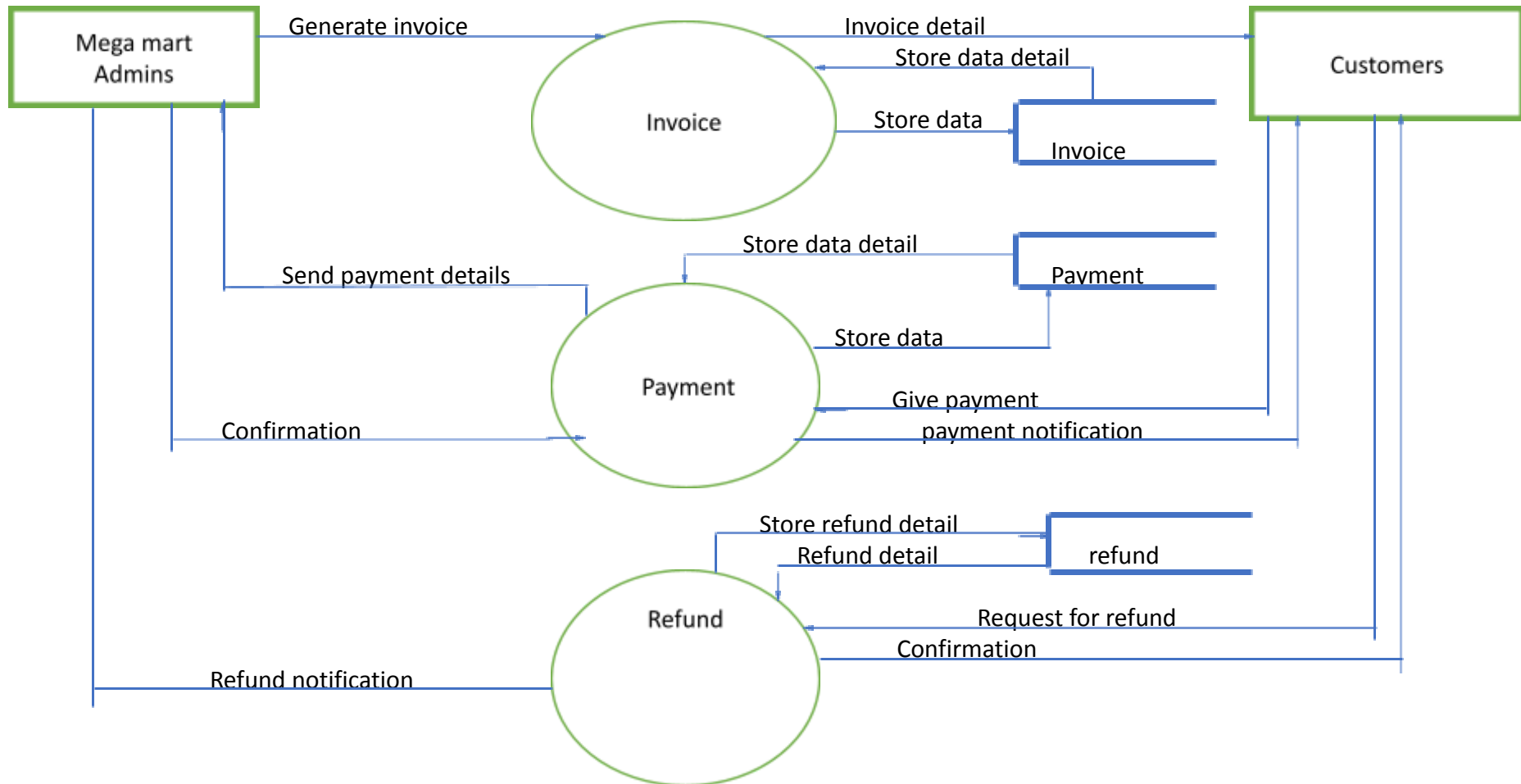
b. Product



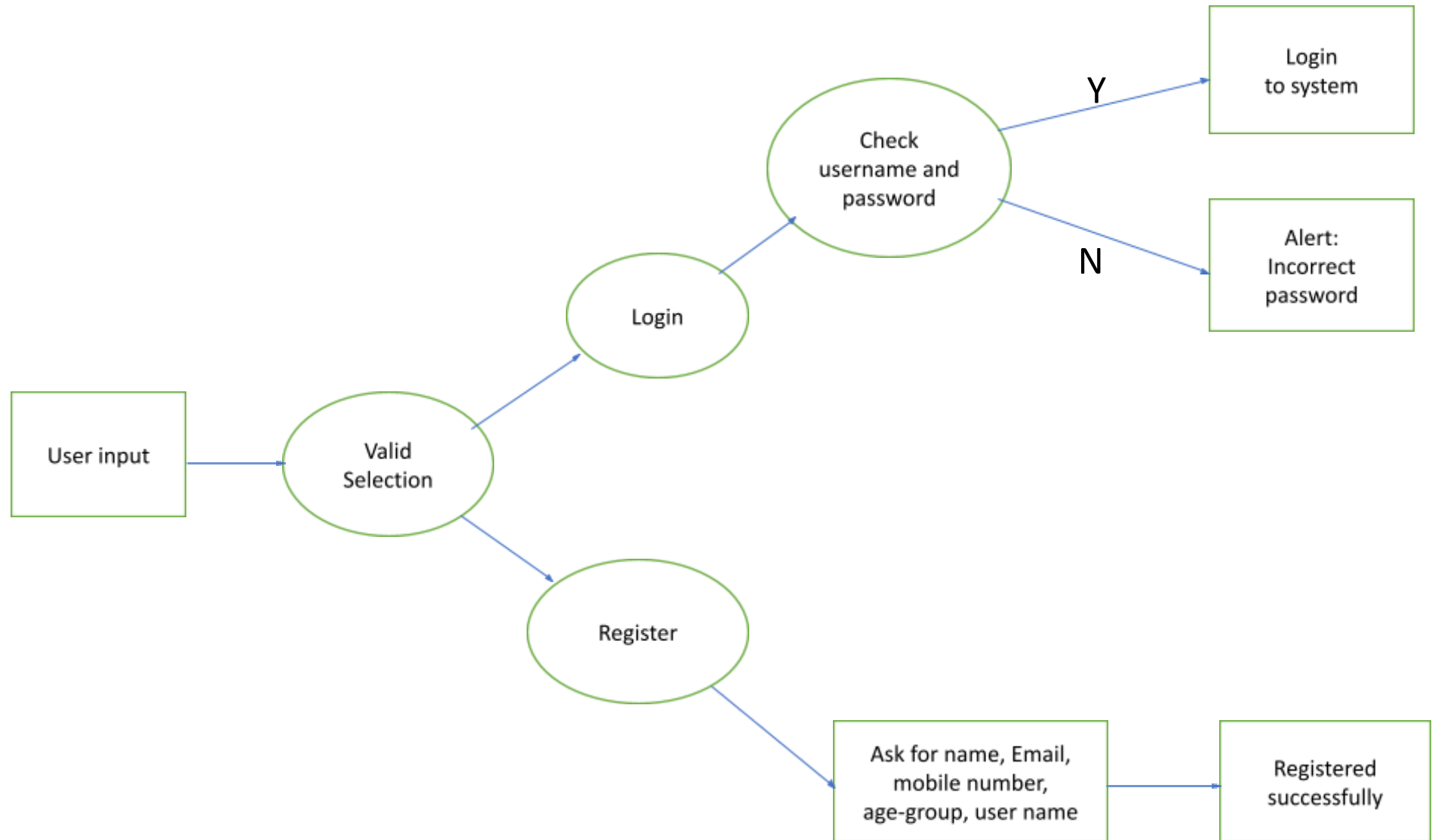
c. Order



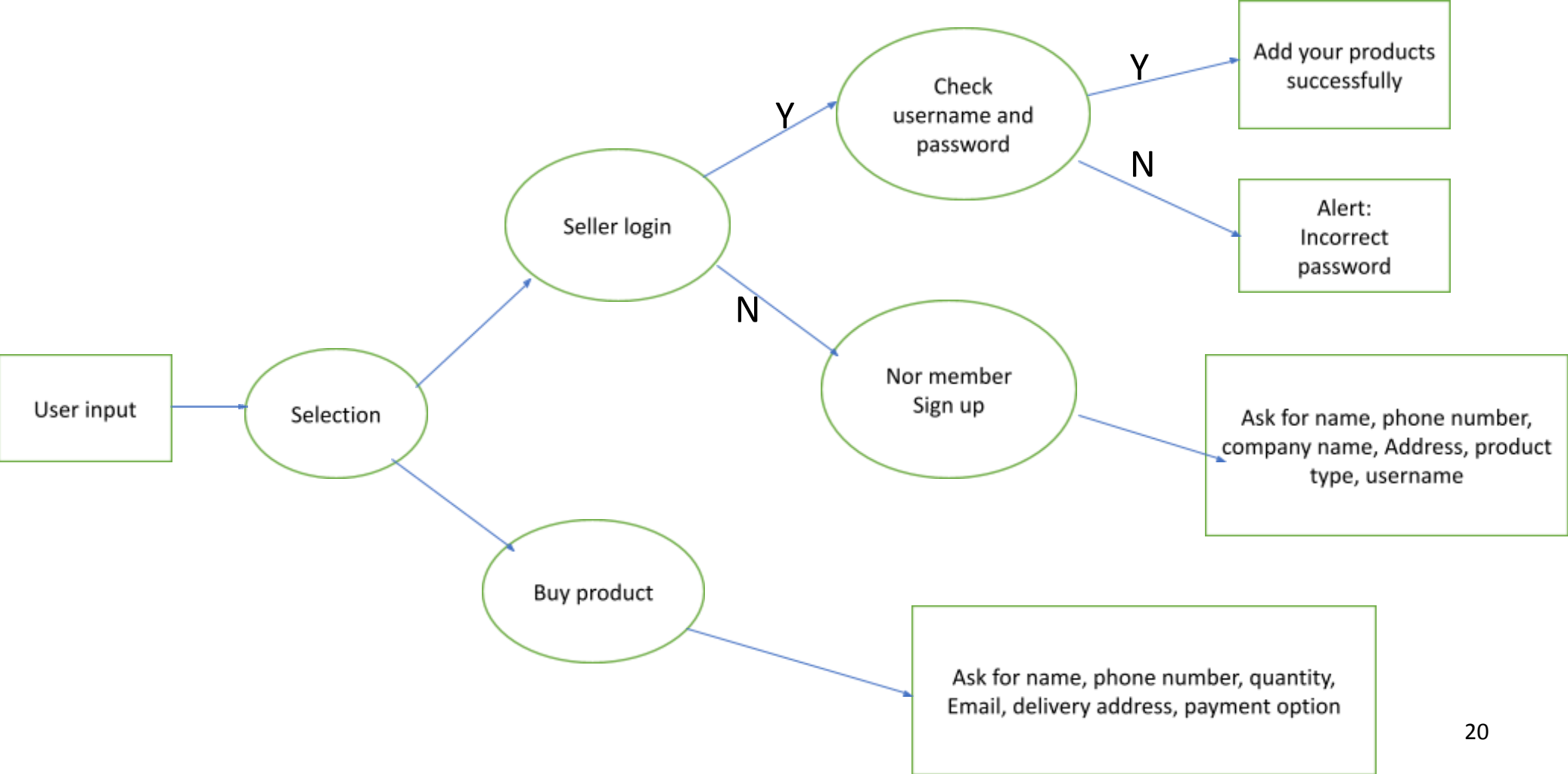
d. Payment



3.4 A decision tree for Login page



3.5 A decision tree for Product page



3.6 A decision table for Login page

conditions	Rule 1	Rule 2	Rule 3
Username(T/F)	F	T	F
Password(T/F)	F	F	T
Output(E/H)	E	E	E

Legend:

- T – Correct username/password
- F – Wrong username/password
- E – Error message is displayed

Interpretation:

- Case 1 – Username and password both were wrong. The user is shown an error message.
- Case 2 – Username was correct, but the password was wrong. The user is shown an error message.
- Case 3 – Username was wrong, but the password was correct. The user is shown an error message.

- Case 4 – Username and password both were correct, and the user navigated to homepage

3.7 Decision table for Product page

	Rules			
Conditions	1	2	3	4
C1. New customer	Y			
C2. Previous monthly transaction > 1000Birr		Y	Y	N
C3. Transaction >500 Birr		N	Y	
Actions	1	2	3	4
A1. Accept “Pay in advance ”	X	X	X	X
A2. Accept “Pay upon delivery ”		X		
A3. Accept “Pay upon delivery ”with 15% prior deposit			X	