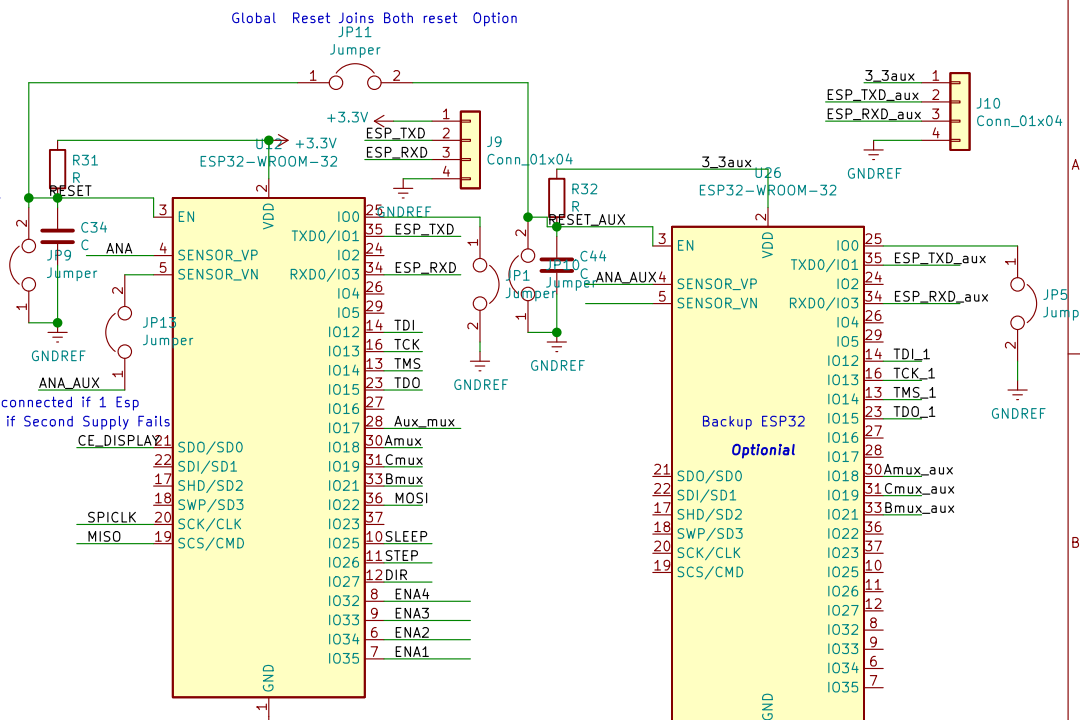


Sheet: sheet601CA04D
 File: /spark_fun_module.sch

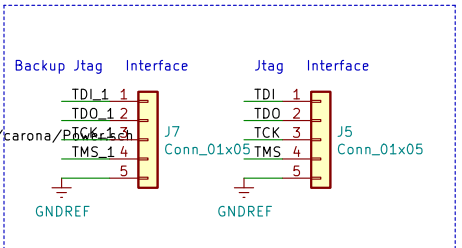
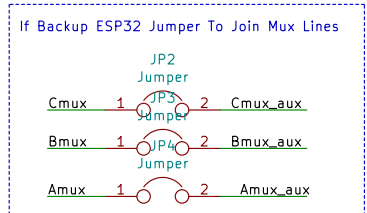
Sheet: sheet601AEBE9
 File: /spark_fun_module.sch

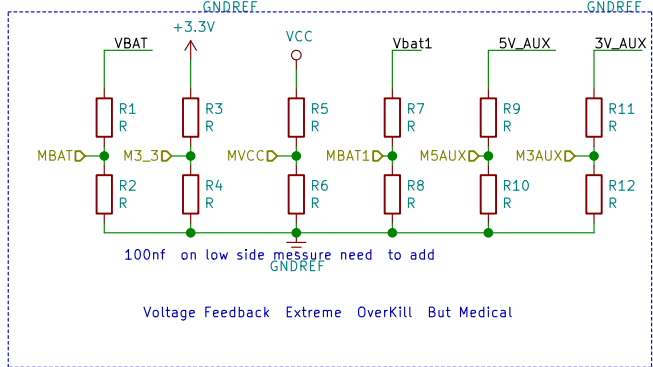
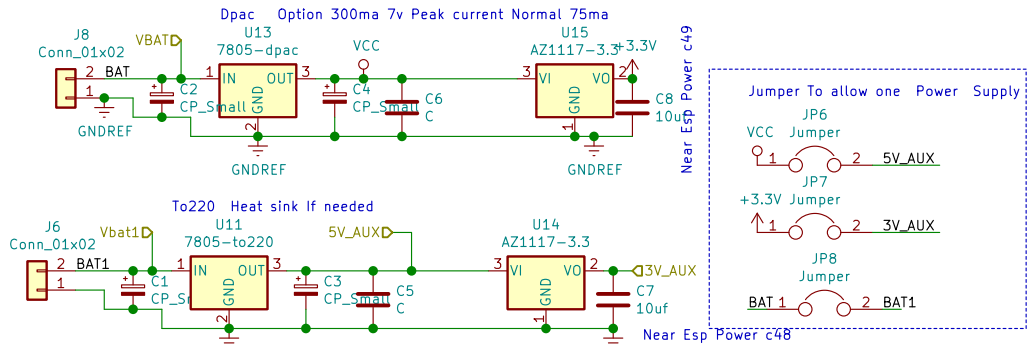
Sheet: sheet6016800E
 File: /spark_fun_module.sch



ANA_AUX only connected if 1 Esp
 Danger Voltage above Power if Second Supply Fails

Hardware Mux Can be Removed Direct to esp this way this way Sensor error can be checked
 EspAna0 and EspAna1 need to be the about same The Average of the Two More reliable Measurement





Sheet: /Sheet5EA039C7/		Date:	
File: Power.sch		Rev:	
Size: A4	KiCad E.D.A. kicad (5.1.5)-3	Id: 2/5	

