



Manhattan Skyline®



Be a Part of the Skyline®

New York City's no-
fee residential
rentals.

I am looking for a
Two B

[VIEW ALL RENTALS](#)



Manhattan Skyline®



APARTMENTS FOR RENT

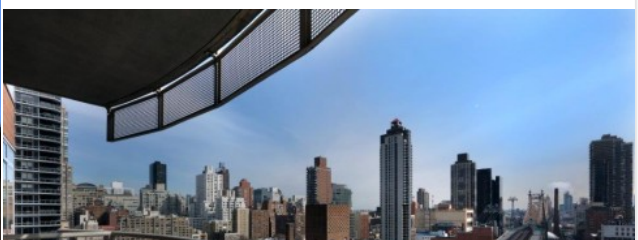


Soho

\$5,295 NO FEE

2 BEDS • 2 BATHS

Soho Court®





Manhattan Skyline®

Upper East Side

\$7,150 NO FEE

2 BEDS • 2 BATHS

205 E 59 St

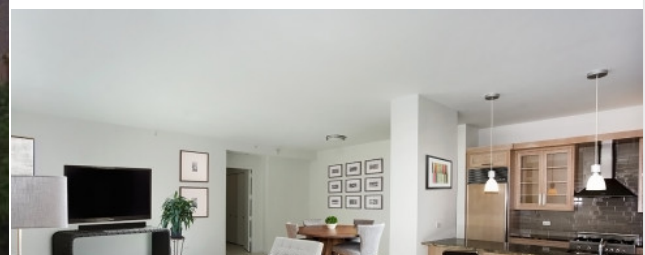


Upper West Side

\$8,950 NO FEE

3 BEDS • 2.5 BATHS

West River House®





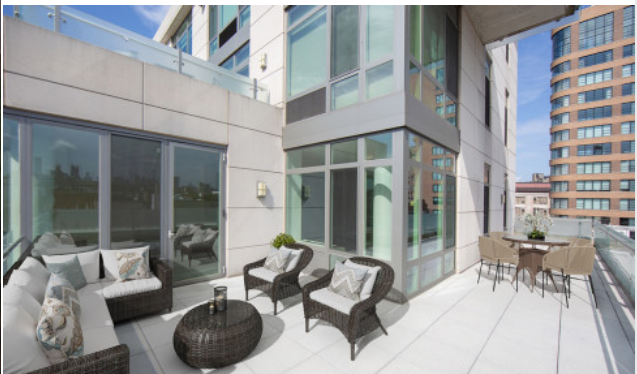
Manhattan Skyline

Soho

\$13,125 NO FEE

2 BEDS • 2 BATHS

55 Thompson®

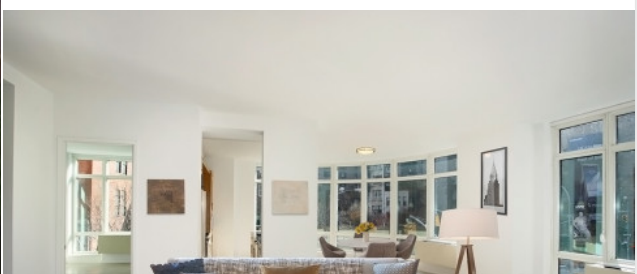


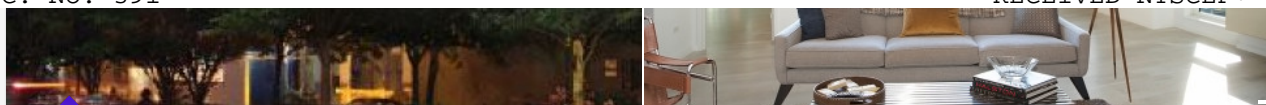
Soho

\$16,125 NO FEE

3 BEDS • 2.5 BATHS

55 Thompson®





Manhattan Skyline®

Soho

\$15,125 NO FEE

3 BEDS • 3 BATHS

55 Thompson®

VIEW ALL

EXPLORE BY LOCATION



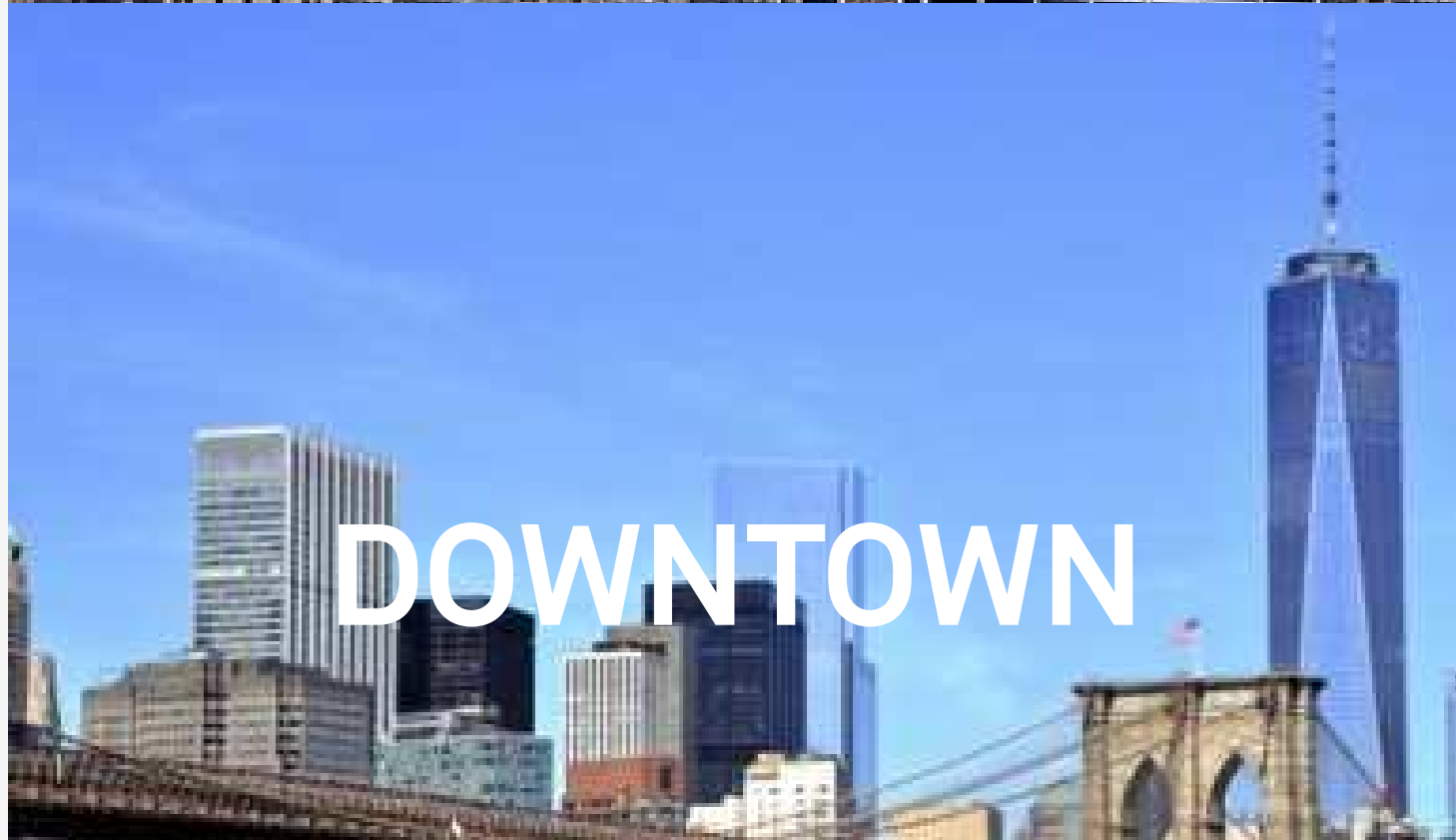
UPTOWN



Manhattan Skyline®



MIDTOWN



DOWNTOWN

APARTMENTS FOR SALE





Manhattan Skyline®

[VIEW ALL](#)

SKY'S THE LIMIT™ RESIDENTIAL SERVICES

Whether you're moving in, already in or planning a night out, all residents can take advantage of our complimentary concierge-style offerings including pre-screened movers, reputable service providers, storage resources and more.



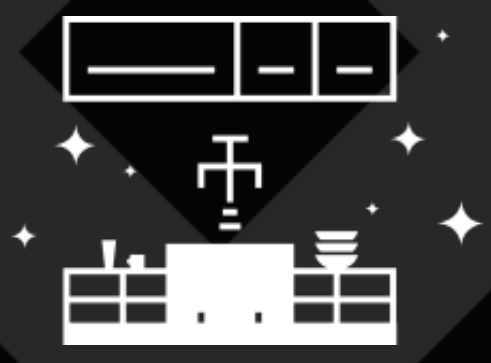
Moving Up



Manhattan Skyline



Going Out



Staying In

LEARN MORE

ABOUT US



Manhattan Skyline®

As one of New York City's largest real estate companies, our mission is simple; to pair the right resident with the right space at the right price. With unique market insight, a strong sense of community and a comprehensive portfolio of no-fee apartments, let us help you find your way home.



No-Fee Rentals

All luxurious. All without an extra cost. Each of our listings is no-fee so moving is as pleasant as possible.



Sky's The Limit™

Enjoy our complimentary, personalized concierge services that will make you feel

like you're living in a 5-star hotel year round.



Manhattan Skyline®



Trusted Support

Our residents are our family. So if you're in need of help, we'll be there to assist in any way we can.

[LEARN MORE](#)

CONTACT US



Have your eye on a certain property or questions about a specific neighborhood? Whatever the query, we're here to help.

[LEASING CONTACT](#)



Manhattan Skyline®

RESIDENTIAL CONTACT

COMMERCIAL CONTACT

SEE RENTALS



Manhattan Skyline®



[Apply Now](#)

[Rent](#)

[Buy](#)

[Commercial](#)

[Buildings](#)

[About Us](#)

[Contact Us](#)

[Sky's the Limit™ Concierge](#)

[FAQs](#)

[Brokers](#)

[Residents](#)

[Careers](#)

[Privacy Policy](#)

[Terms of Use](#)

[Fair Housing Notice](#)

©2020 Manhattan Skyline Management Corp®. All rights reserved.

