

The FREQ Procedure

Table of bmi_grp by race_grp				
bmi_grp(bmi_grp)	race_grp(race_grp)			
	0	1	2	Total
1	325	26	0	351
2	335	35	0	370
3	243	25	1	269
4	9	1	0	10
Total	912	87	1	1000

The CORR Procedure

bmi_grp=3

1 With Variables:	_1_2_DIPALMITOYLGLYCEROL
1 Variables:	age

Spearman Correlation Coefficients, N = 269 Prob > r under H0: Rho=0	
	age
_1_2_DIPALMITOYLGLYCEROL	0.06281
_1_2_DIPALMITOYLGLYCEROL	0.3047

march2018 race adjusted with dummy group 1 and 2

The CORR Procedure

bmi_grp=3

2 Partial Variables:	racegrp1	racegrp2
1 With Variables:	_1_2_DIPALMITOYLGLYCEROL	
1 Variables:	age	

Spearman Partial Correlation Coefficients, N = 269 Prob > r under H0: Partial Rho=0	
	age
_1_2_DIPALMITOYLGLYCEROL	0.05243
_1_2_DIPALMITOYLGLYCEROL	0.3935

The CORR Procedure

bmi_grp=3

2 Partial Variables:	racegrp0	racegrp1
1 With Variables:	_1_2_DIPALMITOYLGLYCEROL	
1 Variables:	age	

Spearman Partial Correlation Coefficients, N = 269 Prob > r under H0: Partial Rho=0	
	age
_1_2_DIPALMITOYLGLYCEROL	0.05243
_1_2_DIPALMITOYLGLYCEROL	0.3935

Obs	bmi_grp	Variable	Label	age	Page
1	3	_1_2_DIPALMITOYLGLYCEROL	_1_2_DIPALMITOYLGLYCEROL	0.05242776	0.39352382

The GLM Procedure

bmi_grp=3

Class Level Information		
Class	Levels	Values
race_grp	3	0 1 2

Number of Observations Read	269
Number of Observations Used	269

The GLM Procedure

Dependent Variable: **_1_2_DIPALMITOYLGLYCEROL** **_1_2_DIPALMITOYLGLYCEROL**

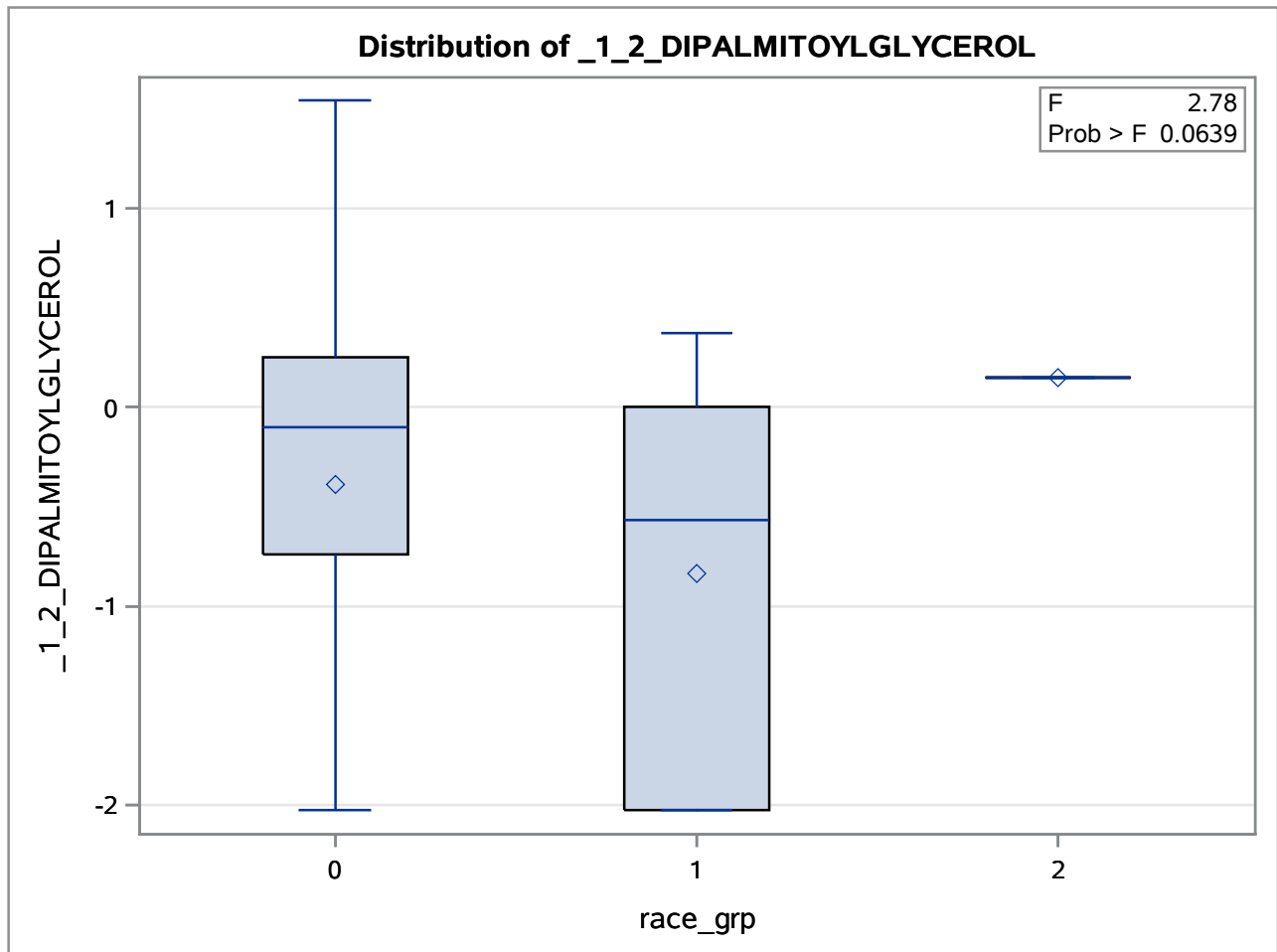
bmi_grp=3

Source	DF	Sum of Squares	Mean Square	F Value	Pr > F
Model	2	4.8024409	2.4012205	2.78	0.0639
Error	266	229.8174529	0.8639754		
Corrected Total	268	234.6198939			

R-Square	Coeff Var	Root MSE	_1_2_DIPALMITOYLGLYCEROL Mean
0.020469	-216.6194	0.929503	-0.429095

Source	DF	Type I SS	Mean Square	F Value	Pr > F
race_grp	2	4.80244095	2.40122047	2.78	0.0639

Source	DF	Type III SS	Mean Square	F Value	Pr > F
race_grp	2	4.80244095	2.40122047	2.78	0.0639



The GLM Procedure

bmi_grp=3

Class Level Information		
Class	Levels	Values
race_grp	3	0 1 2

Number of Observations Read	269
Number of Observations Used	269

The GLM Procedure

Dependent Variable: age age

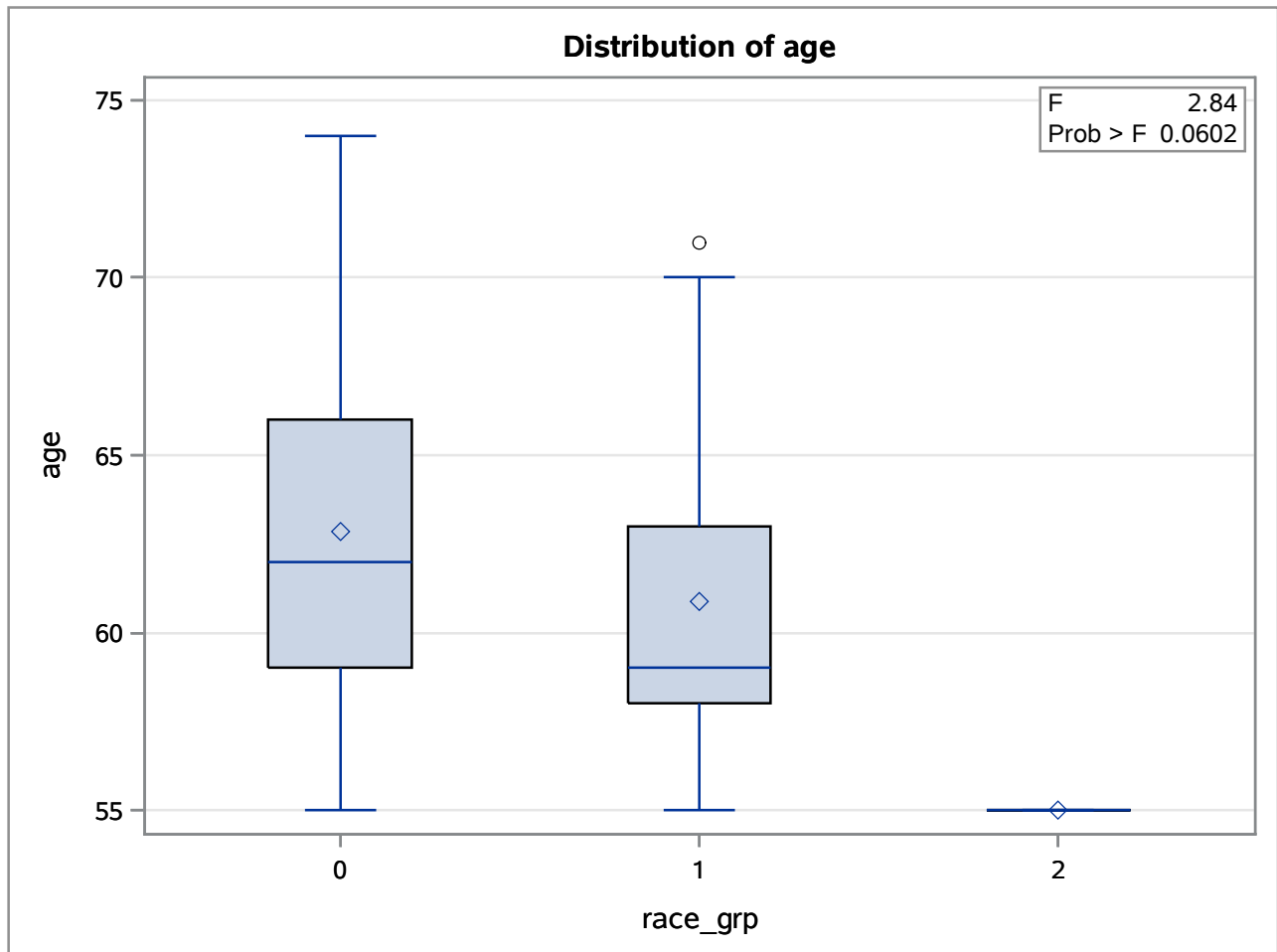
bmi_grp=3

Source	DF	Sum of Squares	Mean Square	F Value	Pr > F
Model	2	146.715638	73.357819	2.84	0.0602
Error	266	6871.306667	25.831980		
Corrected Total	268	7018.022305			

R-Square	Coeff Var	Root MSE	age Mean
0.020906	8.113929	5.082517	62.63941

Source	DF	Type I SS	Mean Square	F Value	Pr > F
race_grp	2	146.7156382	73.3578191	2.84	0.0602

Source	DF	Type III SS	Mean Square	F Value	Pr > F
race_grp	2	146.7156382	73.3578191	2.84	0.0602



The REG Procedure
Model: MODEL1
Dependent Variable: age age

bmi_grp=3

Number of Observations Read	269
Number of Observations Used	269

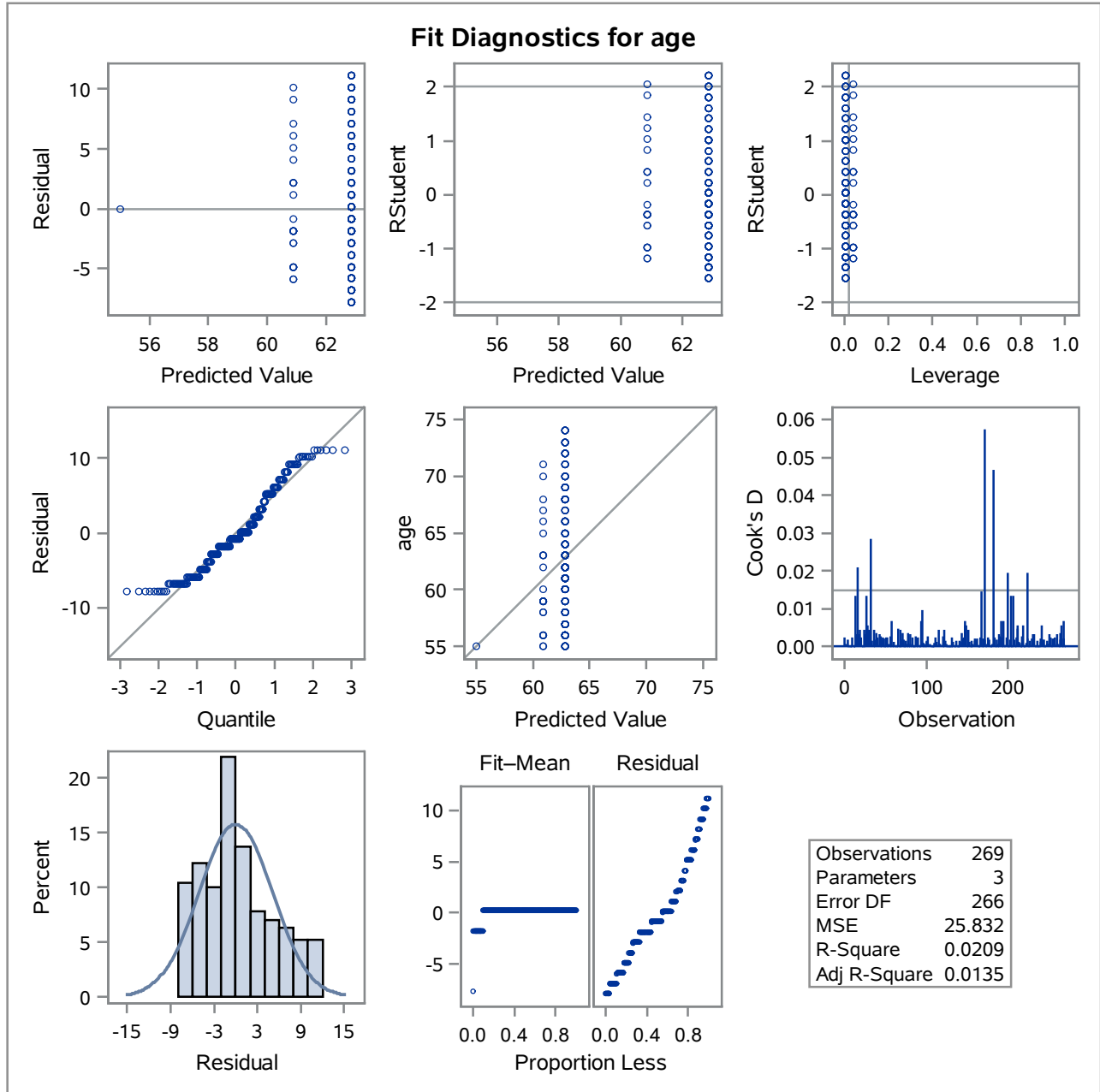
Analysis of Variance					
Source	DF	Sum of Squares	Mean Square	F Value	Pr > F
Model	2	146.71564	73.35782	2.84	0.0602
Error	266	6871.30667	25.83198		
Corrected Total	268	7018.02230			

Root MSE	5.08252	R-Square	0.0209
Dependent Mean	62.63941	Adj R-Sq	0.0135
Coeff Var	8.11393		

Parameter Estimates						
Variable	Label	DF	Parameter Estimate	Standard Error	t Value	Pr > t
Intercept	Intercept	1	55.00000	5.08252	10.82	<.0001
racegrp1		1	5.88000	5.18317	1.13	0.2576
racegrp0		1	7.85185	5.09296	1.54	0.1243

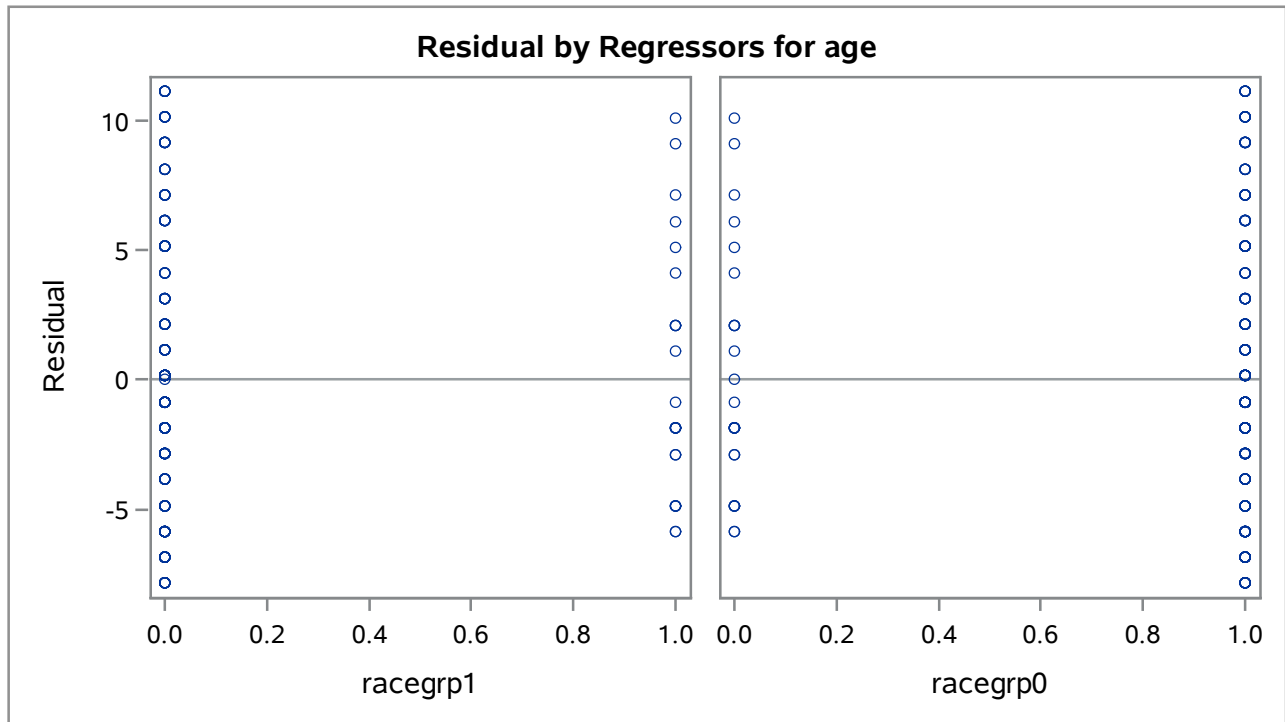
The REG Procedure
 Model: MODEL1
 Dependent Variable: age age

bmi_grp=3



The REG Procedure
Model: MODEL1
Dependent Variable: age age

bmi_grp=3



The REG Procedure

Model: MODEL1

Dependent Variable: _1_2_DIPALMITOYLGLYCEROL _1_2_DIPALMITOYLGLYCEROL

bmi_grp=3

Number of Observations Read	269
Number of Observations Used	269

Analysis of Variance					
Source	DF	Sum of Squares	Mean Square	F Value	Pr > F
Model	2	4.80244	2.40122	2.78	0.0639
Error	266	229.81745	0.86398		
Corrected Total	268	234.61989			

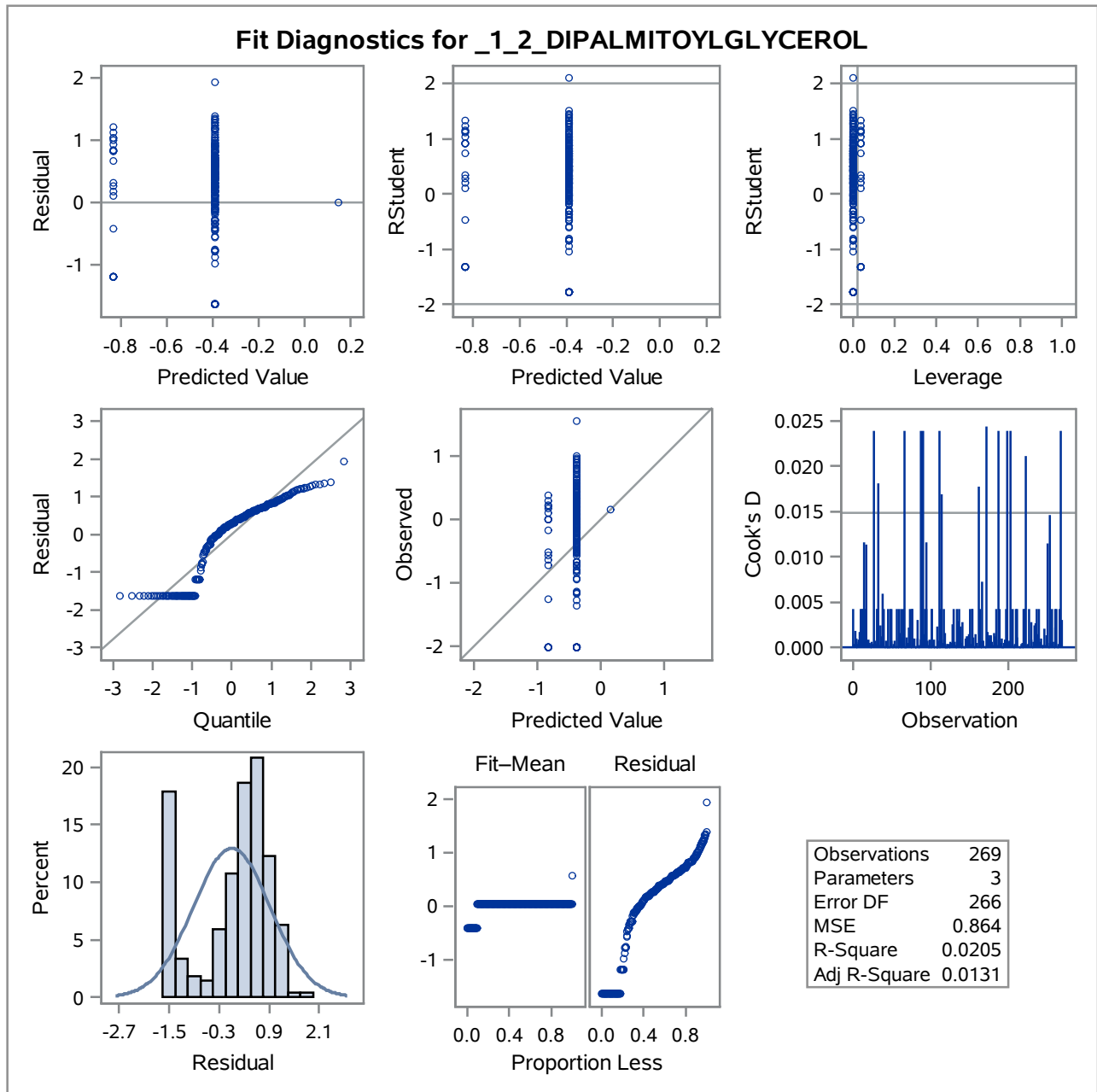
Root MSE	0.92950	R-Square	0.0205
Dependent Mean	-0.42909	Adj R-Sq	0.0131
Coeff Var	-216.61943		

Parameter Estimates						
Variable	Label	DF	Parameter Estimate	Standard Error	t Value	Pr > t
Intercept	Intercept	1	-0.38985	0.05963	-6.54	<.0001
racegrp1		1	-0.44390	0.19523	-2.27	0.0238
racegrp2		1	0.53922	0.93141	0.58	0.5631

The REG Procedure
Model: MODEL1

Dependent Variable: 1_2_DIPALMITOYLGLYCEROL 1_2_DIPALMITOYLGLYCEROL

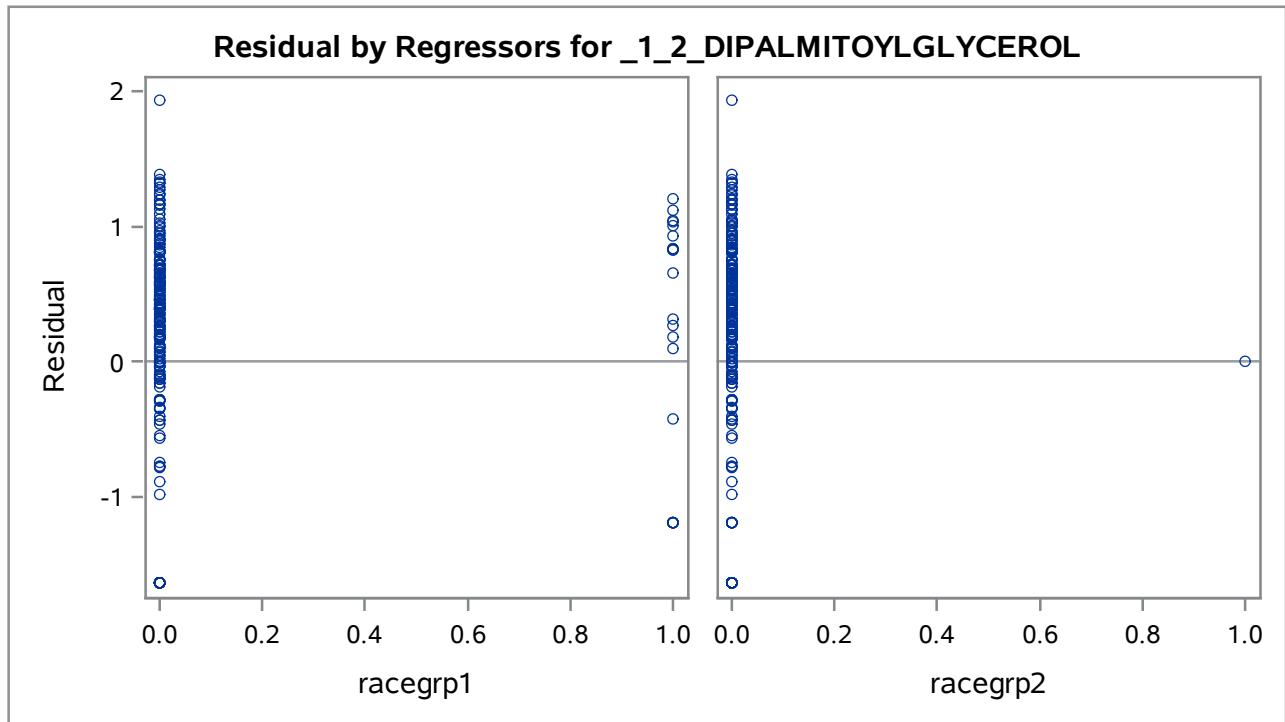
bmi_grp=3



The REG Procedure
Model: MODEL1

Dependent Variable: _1_2_DIPALMITOYLGLYCEROL _1_2_DIPALMITOYLGLYCEROL

bmi_grp=3



The CORR Procedure

1 With Variables:	resprop
1 Variables:	resage

Spearman Correlation Coefficients, N = 269 Prob > r under H0: Rho=0	
	resage
resprop	0.04765 0.4363

The CORR Procedure

1 With Variables:	respropr
1 Variables:	resager

Spearman Correlation Coefficients, N = 269 Prob > r under H0: Rho=0	
	resager
respropr	0.04765
Residual	0.4363