

The FREQ Procedure

Table of bmi_grp by race_grp				
bmi_grp(bmi_grp)	race_grp(race_grp)			
	0	1	2	Total
1	325	26	0	351
2	335	35	0	370
3	243	25	1	269
4	9	1	0	10
Total	912	87	1	1000

The CORR Procedure

bmi_grp=3

1 With Variables:	_1_2_PROPANEDIOL
1 Variables:	age

Spearman Correlation Coefficients, N = 269 Prob > r under H0: Rho=0	
	age
_1_2_PROPANEDIOL	-0.01786
_1_2_PROPANEDIOL	0.7706

march2018 race adjusted with dummy group 1 and 2

The CORR Procedure

bmi_grp=3

2 Partial Variables:	racegrp1	racegrp2
1 With Variables:	_1_2_PROPANEDIOL	
1 Variables:	age	

Spearman Partial Correlation Coefficients, N = 269 Prob > r under H0: Partial Rho=0	
	age
_1_2_PROPANEDIOL	-0.00948
_1_2_PROPANEDIOL	0.8775

The CORR Procedure

bmi_grp=3

2 Partial Variables:	racegrp0 racegrp1
1 With Variables:	_1_2_PROPANEDIOL
1 Variables:	age

Spearman Partial Correlation Coefficients, N = 269 Prob > r under H0: Partial Rho=0	
	age
_1_2_PROPANEDIOL	-0.00948
_1_2_PROPANEDIOL	0.8775

Obs	bmi_grp	Variable	Label	age	Page
1	3	_1_2_PROPANEDIOL	_1_2_PROPANEDIOL	-0.00947620	0.87751563

The GLM Procedure

bmi_grp=3

Class Level Information		
Class	Levels	Values
race_grp	3	0 1 2

Number of Observations Read	269
Number of Observations Used	269

The GLM Procedure

Dependent Variable: **_1_2_PROPANEDIOL** **_1_2_PROPANEDIOL**

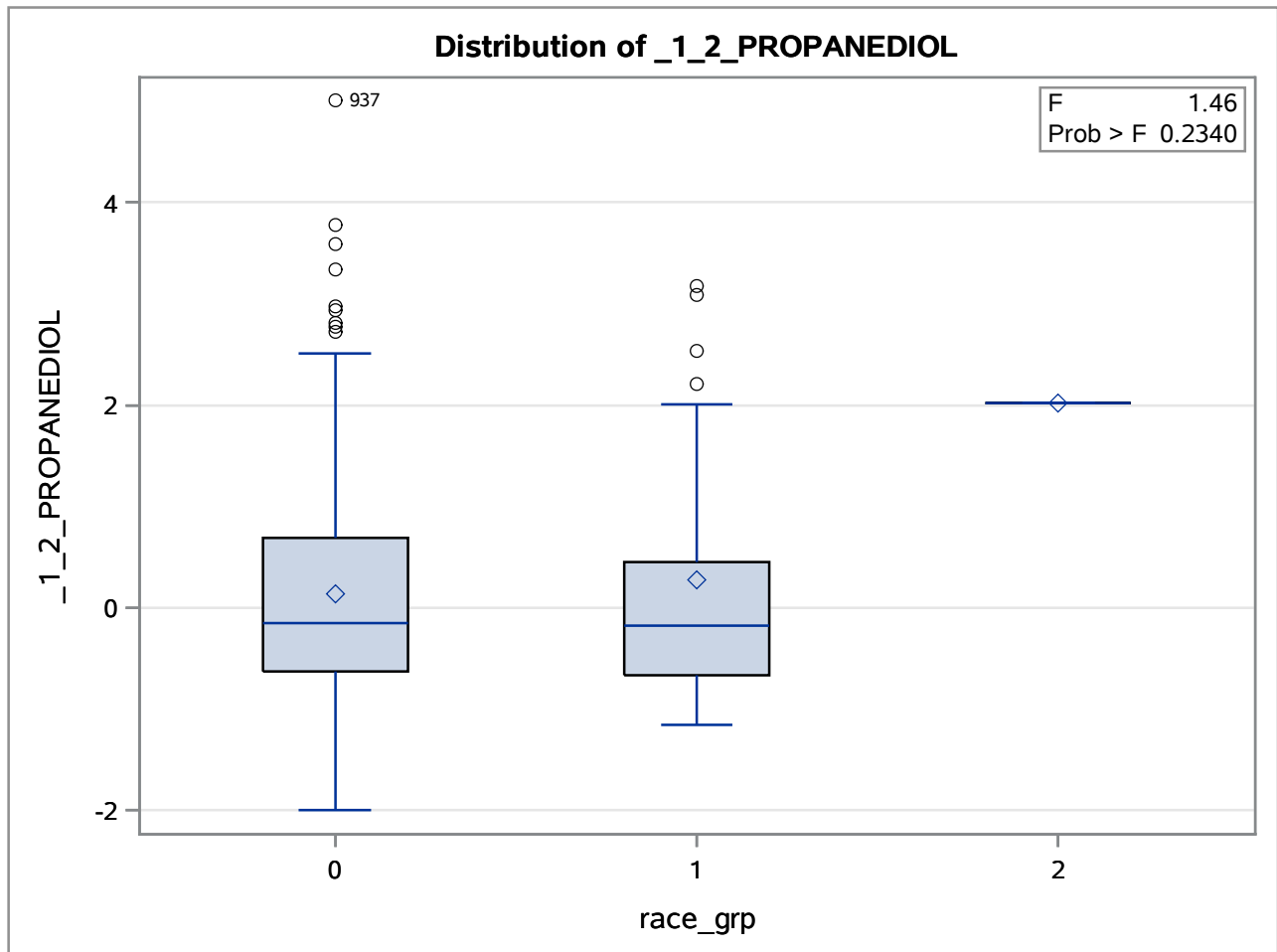
bmi_grp=3

Source	DF	Sum of Squares	Mean Square	F Value	Pr > F
Model	2	3.9003528	1.9501764	1.46	0.2340
Error	266	355.2346922	1.3354688		
Corrected Total	268	359.1350450			

R-Square	Coeff Var	Root MSE	_1_2_PROPANEDIOL Mean
0.010860	748.4233	1.155625	0.154408

Source	DF	Type I SS	Mean Square	F Value	Pr > F
race_grp	2	3.90035277	1.95017638	1.46	0.2340

Source	DF	Type III SS	Mean Square	F Value	Pr > F
race_grp	2	3.90035277	1.95017638	1.46	0.2340



The GLM Procedure

bmi_grp=3

Class Level Information		
Class	Levels	Values
race_grp	3	0 1 2

Number of Observations Read	269
Number of Observations Used	269

The GLM Procedure

Dependent Variable: age age

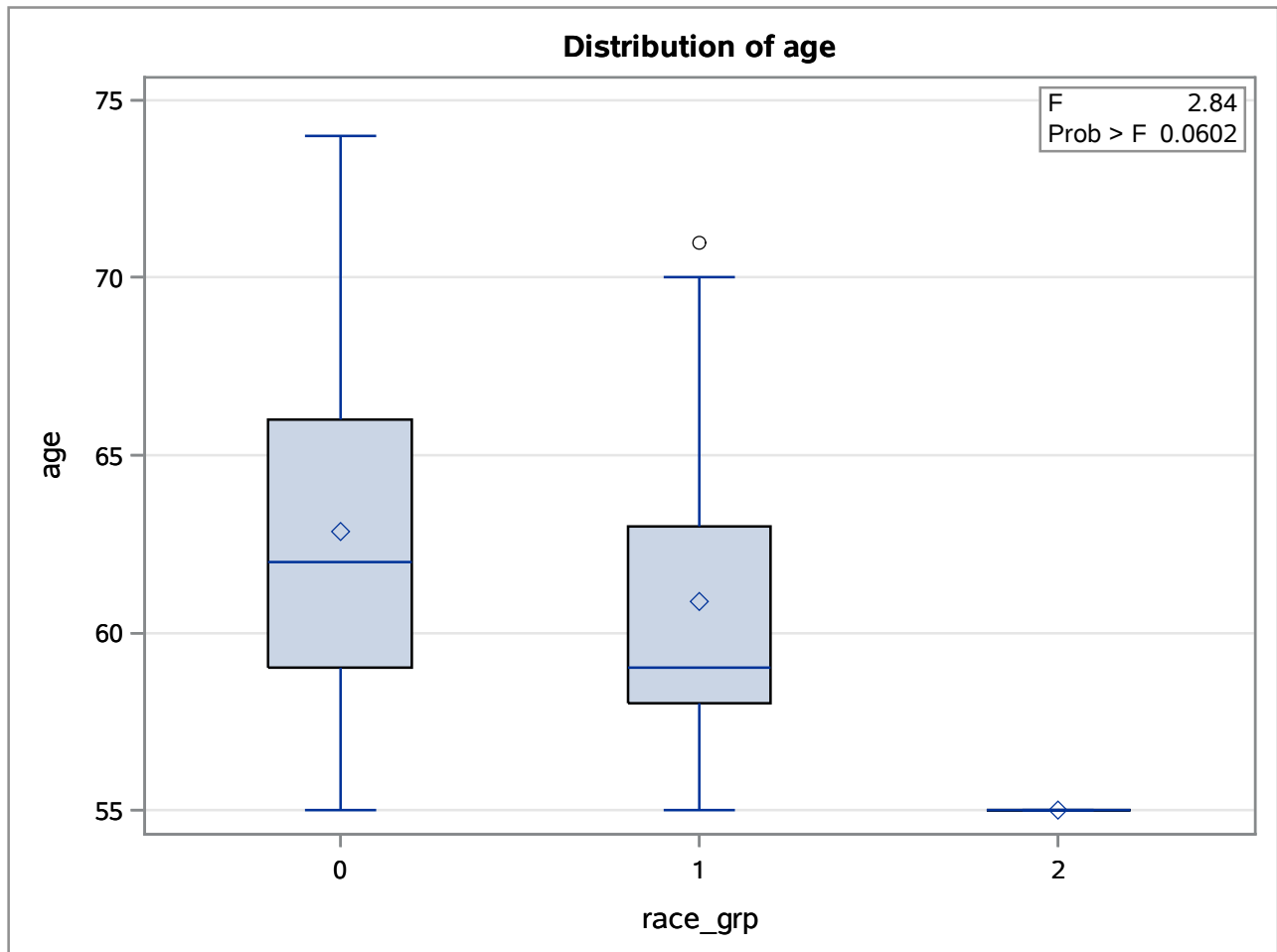
bmi_grp=3

Source	DF	Sum of Squares	Mean Square	F Value	Pr > F
Model	2	146.715638	73.357819	2.84	0.0602
Error	266	6871.306667	25.831980		
Corrected Total	268	7018.022305			

R-Square	Coeff Var	Root MSE	age Mean
0.020906	8.113929	5.082517	62.63941

Source	DF	Type I SS	Mean Square	F Value	Pr > F
race_grp	2	146.7156382	73.3578191	2.84	0.0602

Source	DF	Type III SS	Mean Square	F Value	Pr > F
race_grp	2	146.7156382	73.3578191	2.84	0.0602



The REG Procedure
Model: MODEL1
Dependent Variable: age age

bmi_grp=3

Number of Observations Read	269
Number of Observations Used	269

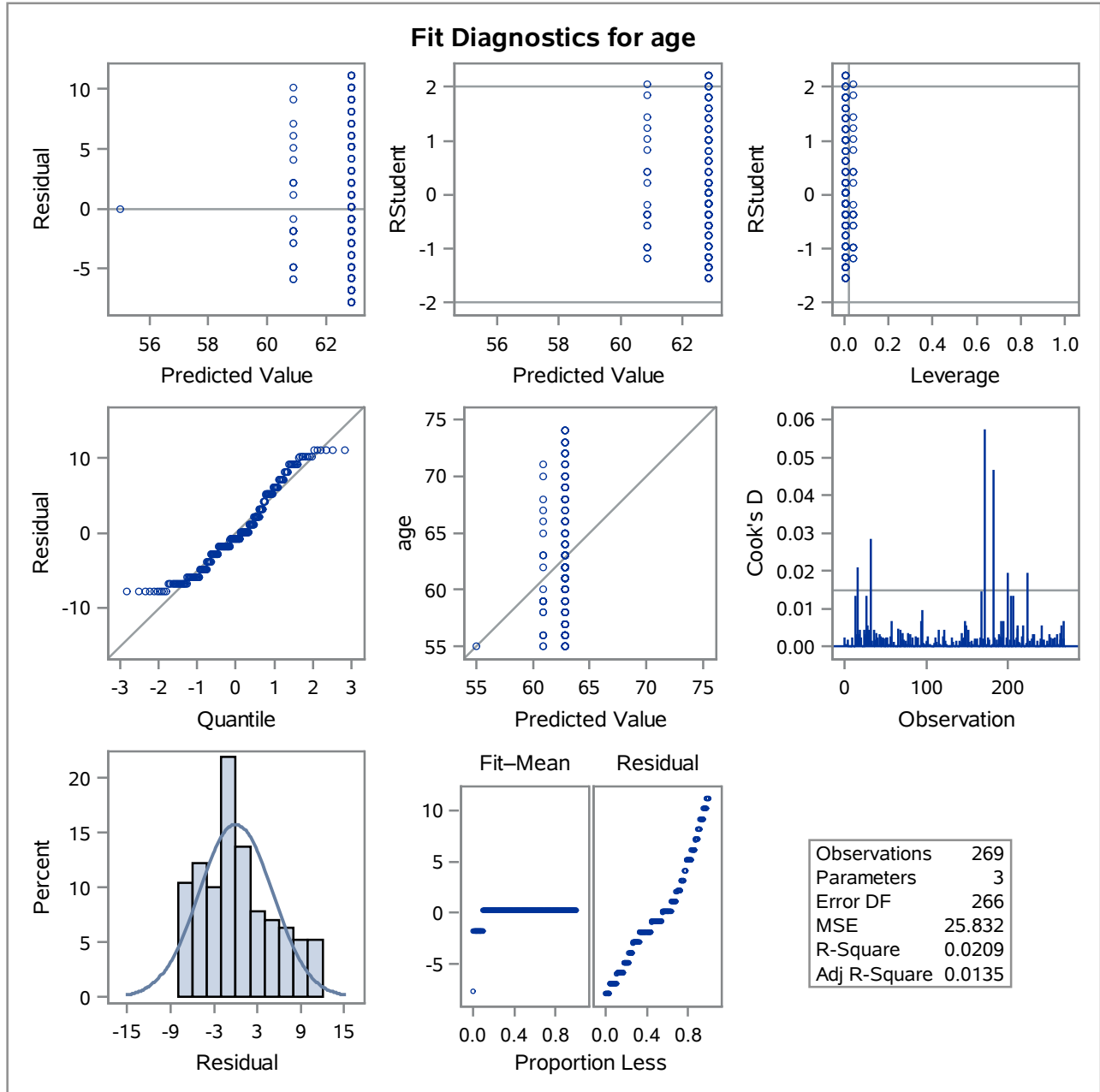
Analysis of Variance					
Source	DF	Sum of Squares	Mean Square	F Value	Pr > F
Model	2	146.71564	73.35782	2.84	0.0602
Error	266	6871.30667	25.83198		
Corrected Total	268	7018.02230			

Root MSE	5.08252	R-Square	0.0209
Dependent Mean	62.63941	Adj R-Sq	0.0135
Coeff Var	8.11393		

Parameter Estimates						
Variable	Label	DF	Parameter Estimate	Standard Error	t Value	Pr > t
Intercept	Intercept	1	55.00000	5.08252	10.82	<.0001
racegrp1		1	5.88000	5.18317	1.13	0.2576
racegrp0		1	7.85185	5.09296	1.54	0.1243

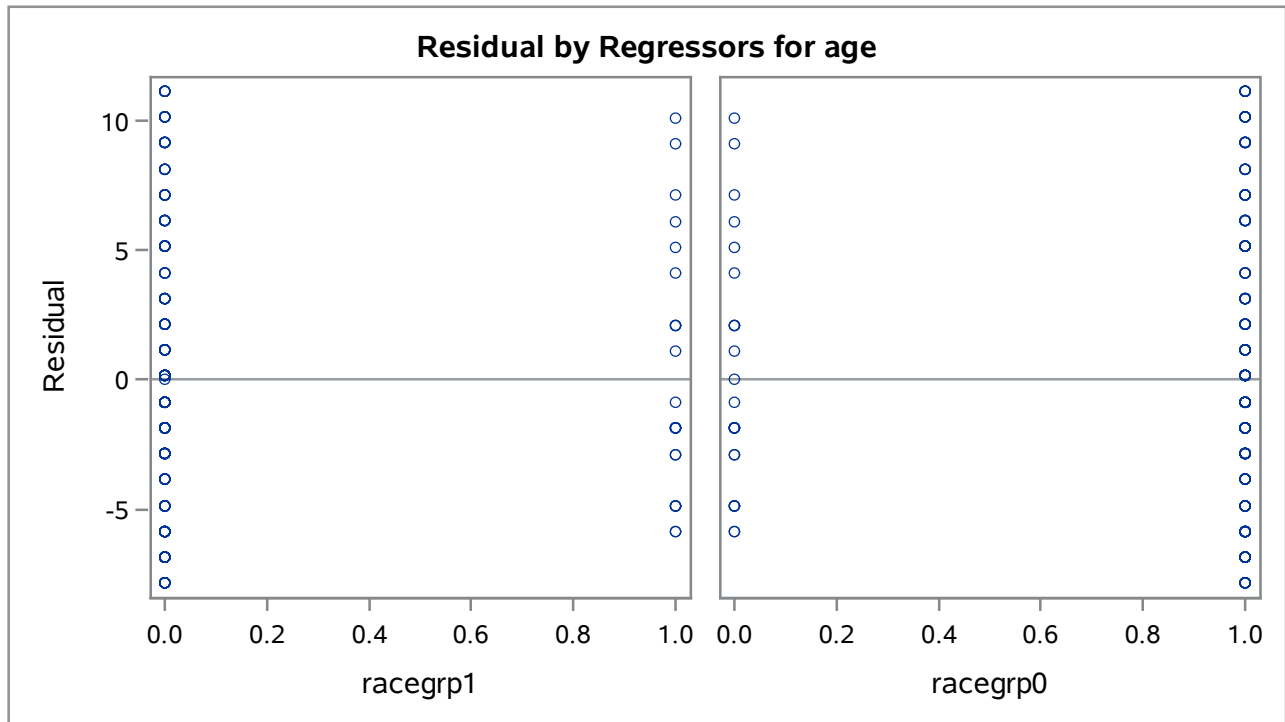
The REG Procedure
 Model: MODEL1
 Dependent Variable: age age

bmi_grp=3



The REG Procedure
Model: MODEL1
Dependent Variable: age age

bmi_grp=3



The REG Procedure

Model: MODEL1

Dependent Variable: _1_2_PROPANEDIOL _1_2_PROPANEDIOL

bmi_grp=3

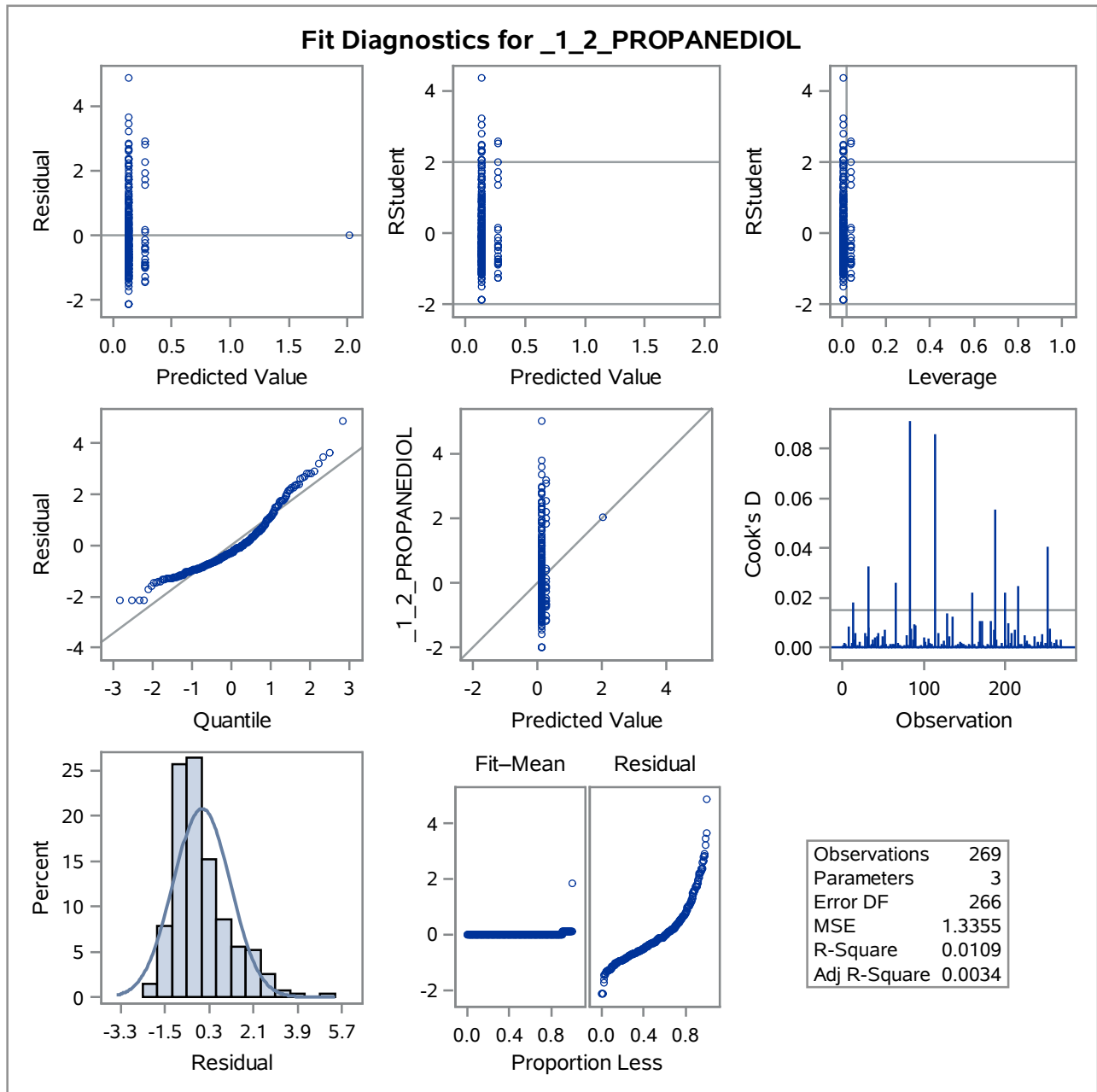
Number of Observations Read	269
Number of Observations Used	269

Analysis of Variance					
Source	DF	Sum of Squares	Mean Square	F Value	Pr > F
Model	2	3.90035	1.95018	1.46	0.2340
Error	266	355.23469	1.33547		
Corrected Total	268	359.13505			

Root MSE	1.15562	R-Square	0.0109
Dependent Mean	0.15441	Adj R-Sq	0.0034
Coeff Var	748.42330		

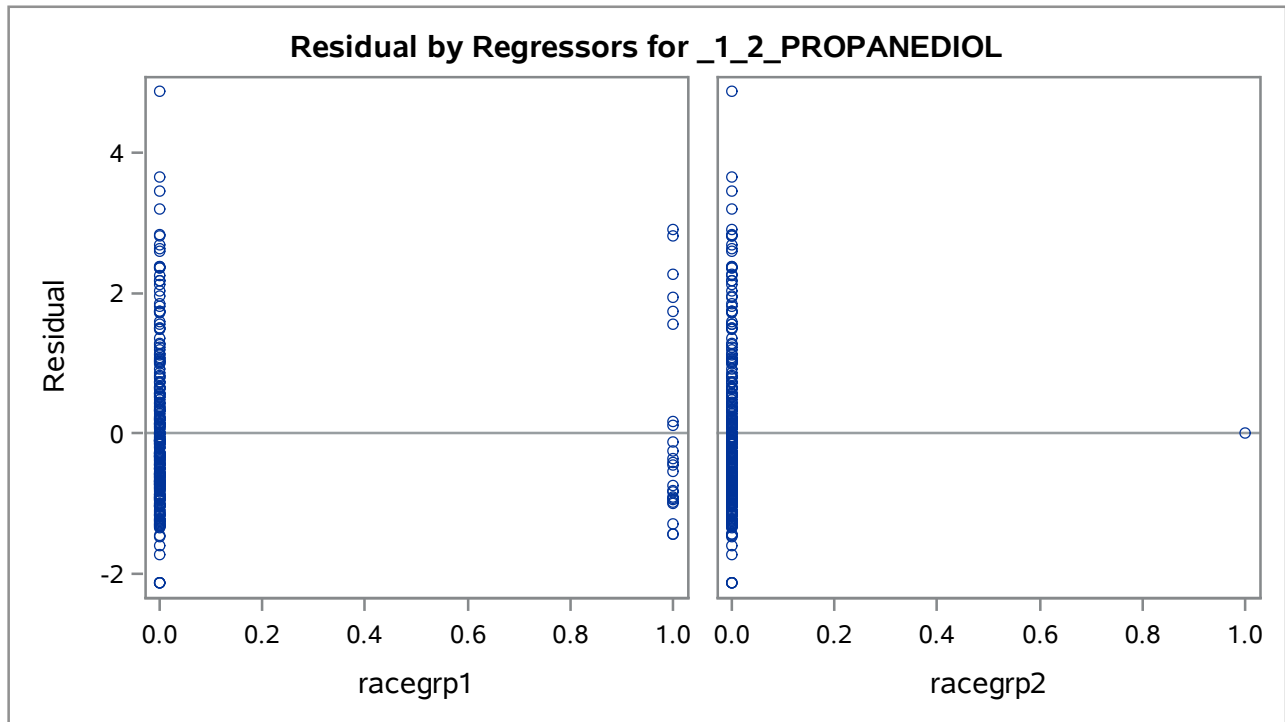
Parameter Estimates						
Variable	Label	DF	Parameter Estimate	Standard Error	t Value	Pr > t
Intercept	Intercept	1	0.13469	0.07413	1.82	0.0704
racegrp1		1	0.13692	0.24272	0.56	0.5732
racegrp2		1	1.88049	1.15800	1.62	0.1056

The REG Procedure
 Model: MODEL1
 Dependent Variable: _1_2_PROPANEDIOL
 bmi_grp=3



The REG Procedure
Model: MODEL1
Dependent Variable: _1_2_PROPANEDIOL _1_2_PROPANEDIOL

bmi_grp=3



The CORR Procedure

1 With Variables:	resprop
1 Variables:	resage

Spearman Correlation Coefficients, N = 269 Prob > r under H0: Rho=0	
	resage
resprop	-0.00489 0.9363

The CORR Procedure

1 With Variables:	respropr
1 Variables:	resager

Spearman Correlation Coefficients, N = 269 Prob > r under H0: Rho=0	
	resager
respropr	-0.00489
Residual	0.9363