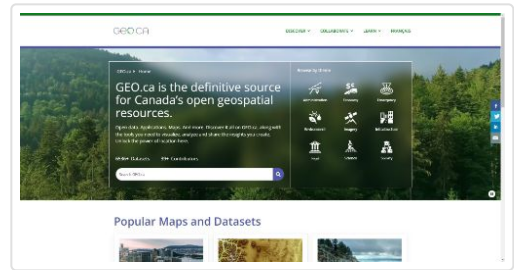


Performance

Values are estimated and may vary. The [performance score is calculated](#) directly from these metrics. [See calculator.](#)



▲ 0–49 50–89 90–100

METRICS

[Expand view](#)

▲ First Contentful Paint
3.5 s

▲ Time to Interactive
10.3 s

▲ Speed Index
5.5 s

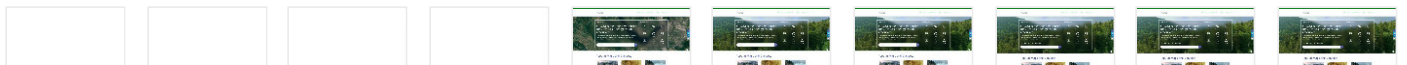
▲ Total Blocking Time
440 ms

▲ Largest Contentful Paint
10.8 s

Cumulative Layout Shift
0.015

[View Original Trace](#)

[View Treemap](#)



Show audits relevant to: All [FCP](#) [TBT](#) [LCP](#) [CLS](#)

OPPORTUNITIES

Opportunity

Estimated Savings

▲ Enable text compression	6.42 s	▼
▲ Reduce unused JavaScript	4.24 s	▼
▲ Eliminate render-blocking resources	2.64 s	▼
▲ Reduce unused CSS	2.09 s	▼
▲ Serve images in next-gen formats	1.11 s	▼
Properly size images	0.46 s	▼
Preconnect to required origins	0.15 s	▼

These suggestions can help your page load faster. They don't [directly affect](#) the Performance score.

DIAGNOSTICS

▲ Avoid enormous network payloads — Total size was 58,150 KiB	▼
▲ Serve static assets with an efficient cache policy — 94 resources found	▼
▲ Ensure text remains visible during webfont load	▼
▲ Avoid <code>document.write()</code>	▼
▲ Image elements do not have explicit <code>width</code> and <code>height</code>	▼
▲ Registers an <code>unload</code> listener	▼
Minimize main-thread work — 3.7 s	▼
○ Avoid chaining critical requests — 82 chains found	▼
○ Keep request counts low and transfer sizes small — 112 requests • 58,150 KiB	▼
○ Largest Contentful Paint element — 1 element found	▼
○ Avoid large layout shifts — 2 elements found	▼
○ Avoid long main-thread tasks — 10 long tasks found	▼

○ Avoid non-composited animations — 56 animated elements found



More information about the performance of your application. These numbers don't [directly affect](#) the Performance score.

PASSED AUDITS (20)

Show



Accessibility

These checks highlight opportunities to [improve the accessibility of your web app](#). Only a subset of accessibility issues can be automatically detected so manual testing is also encouraged.

BEST PRACTICES

▲ `[user-scalable="no"]` is used in the `<meta name="viewport">` element or the `[maximum-scale]` attribute is less than 5.



These items highlight common accessibility best practices.

ARIA

▲ `[aria-hidden="true"]` elements contain focusable descendents



These are opportunities to improve the usage of ARIA in your application which may enhance the experience for users of assistive technology, like a screen reader.

NAMES AND LABELS

▲ Links do not have a discernible name



These are opportunities to improve the semantics of the controls in your application. This may enhance the experience for users of assistive technology, like a screen reader.

ADDITIONAL ITEMS TO MANUALLY CHECK (10)

Show

These items address areas which an automated testing tool cannot cover. Learn more in our guide on [conducting an accessibility review](#).

PASSED AUDITS (21)

Show

NOT APPLICABLE (20)

Show



Best Practices

TRUST AND SAFETY

- ▲ Includes front-end JavaScript libraries with known security vulnerabilities — 4 vulnerabilities detected ▼
- Ensure CSP is effective against XSS attacks ▼

GENERAL

- ▲ Browser errors were logged to the console ▼
- Detected JavaScript libraries ▼
- ▲ Missing source maps for large first-party JavaScript ▼

PASSED AUDITS (10)

Show

NOT APPLICABLE (1)

Show



SEO

These checks ensure that your page is following basic search engine optimization advice. There are many additional factors Lighthouse does not

score here that may affect your search ranking, including performance on [Core Web Vitals](#). [Learn more](#).

CRAWLING AND INDEXING

▲ robots.txt is not valid — 528 errors found



To appear in search results, crawlers need access to your app.

CONTENT BEST PRACTICES

▲ Document doesn't have a valid hreflang



▲ Document does not have a valid rel=canonical Is not an absolute URL (./index.html)



Format your HTML in a way that enables crawlers to better understand your app's content.

ADDITIONAL ITEMS TO MANUALLY CHECK (1)

Show

Run these additional validators on your site to check additional SEO best practices.

PASSED AUDITS (9)

Show

NOT APPLICABLE (2)

Show



PWA

These checks validate the aspects of a Progressive Web App. [Learn more](#).

INSTALLABLE

▲ Web app manifest or service worker do not meet the installability requirements — 1 reason



PWA OPTIMIZED

- ▲ Does not register a service worker that controls page and [start_url](#) ✓
- ▲ Is not configured for a custom splash screen **Failures: No manifest was fetched.** ✓
- ▲ Does not set a theme color for the address bar. **Failures: No manifest was fetched.** ✓
- Content is sized correctly for the viewport ✓
- Has a `<meta name="viewport">` tag with [width](#) or [initial-scale](#) ✓
- Provides a valid [apple-touch-icon](#) ✓
- ▲ Manifest doesn't have a maskable icon **No manifest was fetched** ✓

ADDITIONAL ITEMS TO MANUALLY CHECK (3)

Show

These checks are required by the baseline [PWA Checklist](#) but are not automatically checked by Lighthouse. They do not affect your score but it's important that you verify them manually.

Captured at Jan 24, 2023,
12:40 PM EST
Initial page load

Emulated Desktop with
Lighthouse 9.6.8
Custom throttling

Single page load
Using Chromium 109.0.0.0 with
devtools

Generated by **Lighthouse** 9.6.8 | [File an issue](#)