



Performance



Accessibility



Best Practices



SEO

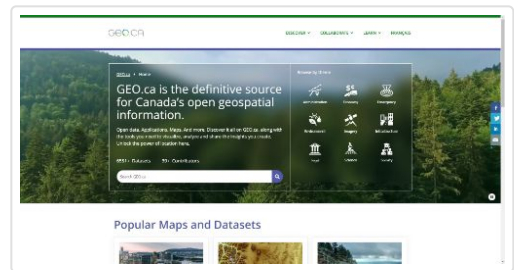


PWA



## Performance

Values are estimated and may vary. The [performance score is calculated](#) directly from these metrics. [See calculator.](#)



▲ 0-49      50-89      90-100

### METRICS

[Expand view](#)

First Contentful Paint

1.1 s

Time to Interactive

1.6 s

Speed Index

1.7 s

Total Blocking Time

50 ms

Largest Contentful Paint

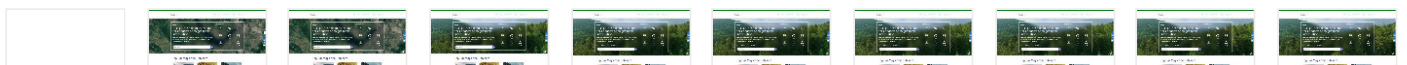
2.1 s

Cumulative Layout Shift

0.02

[View Treemap](#)

[View Original Trace](#)



Show audits relevant to: All [FCP](#) [TBT](#) [LCP](#) [CLS](#)

### OPPORTUNITIES

Opportunity

Estimated Savings

---

Eliminate render-blocking resources

0.72 s 

---

Reduce unused CSS

0.32 s 

---

Preconnect to required origins

0.13 s 

**Warnings:** A `<link rel=preconnect>` was found for "https://fonts.gstatic.com" but was not used by the browser. Check that you are using the `crossorigin` attribute properly.

---

These suggestions can help your page load faster. They don't [directly affect](#) the Performance score.

## DIAGNOSTICS

---

 Avoid enormous network payloads — Total size was 8,924 KiB 

---

 Serve static assets with an efficient cache policy — 71 resources found 

---

 Ensure text remains visible during webfont load 

---

 Avoid `document.write()` 

---

 Image elements do not have explicit `width` and `height` 

---

Minimize main-thread work — 2.0 s 

---

 Avoid chaining critical requests — 56 chains found 

---

 Keep request counts low and transfer sizes small — 83 requests • 8,924 KiB 

---

 Largest Contentful Paint element — 1 element found 



---

 Avoid large layout shifts — 5 elements found 

---

 Avoid long main-thread tasks — 7 long tasks found 

---

 Avoid non-composited animations — 9 animated elements found 

---

More information about the performance of your application. These numbers don't [directly affect](#) the Performance score.

---

PASSED AUDITS (25)

Show



## Accessibility

These checks highlight opportunities to [improve the accessibility of your web app](#). Only a subset of accessibility issues can be automatically detected so manual testing is also encouraged.

### ARIA

---

▲ [\[aria-hidden="true"\] elements contain focusable descendents](#) ▼

---

These are opportunities to improve the usage of ARIA in your application which may enhance the experience for users of assistive technology, like a screen reader.

ADDITIONAL ITEMS TO MANUALLY CHECK (10)

Show

These items address areas which an automated testing tool cannot cover. Learn more in our guide on [conducting an accessibility review](#).

PASSED AUDITS (23)

Show

NOT APPLICABLE (20)

Show

---



## Best Practices

### TRUST AND SAFETY

---

○ Ensure CSP is effective against XSS attacks ▼

---

### GENERAL

---

○ Detected JavaScript libraries ▼

---

PASSED AUDITS (13)

Show

NOT APPLICABLE (1)

Show



## SEO

These checks ensure that your page is following basic search engine optimization advice. There are many additional factors Lighthouse does not score here that may affect your search ranking, including performance on [Core Web Vitals](#). [Learn more](#).

ADDITIONAL ITEMS TO MANUALLY CHECK (1)

Show

Run these additional validators on your site to check additional SEO best practices.

PASSED AUDITS (12)

Show

NOT APPLICABLE (2)

Show



## PWA

These checks validate the aspects of a Progressive Web App. [Learn more](#).

INSTALLABLE

▲ Web app manifest or service worker do not meet the installability requirements — 1 reason



PWA OPTIMIZED

- ▲ Does not register a service worker that controls page and [start\\_url](#) ▼
- ▲ Is not configured for a custom splash screen **Failures: No manifest was fetched.** ▼
- ▲ Does not set a theme color for the address bar. **Failures: No manifest was fetched.** ▼
- Content is sized correctly for the viewport ▼
- Has a `<meta name="viewport">` tag with [width](#) or [initial-scale](#) ▼
- Provides a valid [apple-touch-icon](#) ▼
- ▲ Manifest doesn't have a maskable icon **No manifest was fetched** ▼

ADDITIONAL ITEMS TO MANUALLY CHECK (3)

Show

These checks are required by the baseline [PWA Checklist](#) but are not automatically checked by Lighthouse. They do not affect your score but it's important that you verify them manually.

Captured at Feb 17, 2023,  
8:57 AM EST  
Initial page load

Emulated Desktop with  
Lighthouse 9.6.8  
Custom throttling

Single page load  
Using Chromium 110.0.0.0 with  
devtools