

REV	Description	DATE	BY
A4A	Production Release.	11/19/2012	GC

PAGE NO.	SCHEMATIC PAGE
1	COVER PAGE
2	POWER MANAGEMENT
3	PROCESSOR 1 OF 3, JTAG HEADER
4	PROCESSOR 2 OF 3, UAB PORTS
5	PROCESSOR 3 OF 3
6	LED, CONFIGURATION AND BUTTON
7	DDR3 MEMORY
8	eMMC FLASH
9	10/100 ETHERNET
10	HDMI FRAMER
11	EXP CONN, uSD

NOTE: PCB Revision for this board is Rev B.

This schematic is \*NOT SUPPORTED\* and DOES NOT constitute a reference design. Only "community" support is allowed via resources at [BeagleBoard.org/discuss](http://BeagleBoard.org/discuss).

THERE IS NO WARRANTY FOR THIS DESIGN , TO THE EXTENT PERMITTED BY APPLICABLE LAW. EXCEPT WHEN OTHERWISE STATED IN WRITING THE COPYRIGHT HOLDERS AND/OR OTHER PARTIES PROVIDE THE DESIGN "AS IS" WITHOUT WARRANTY OF ANY KIND, EITHER EXPRESSED OR IMPLIED, INCLUDING, BUT NOT LIMITED TO, THE IMPLIED WARRANTIES OF MERCHANTABILITY AND FITNESS FOR A PARTICULAR PURPOSE. THE ENTIRE RISK AS TO THE QUALITY AND PERFORMANCE OF THE DESIGN IS WITH YOU. SHOULD THE DESIGN PROVE DEFECTIVE, YOU ASSUME THE COST OF ALL NECESSARY SERVICING, REPAIR OR CORRECTION.



beagleboard.org

Title

BeagleBoneBlack Cover Page

Size

Document Number

B450-5500-001

Rev

A4A

Date:

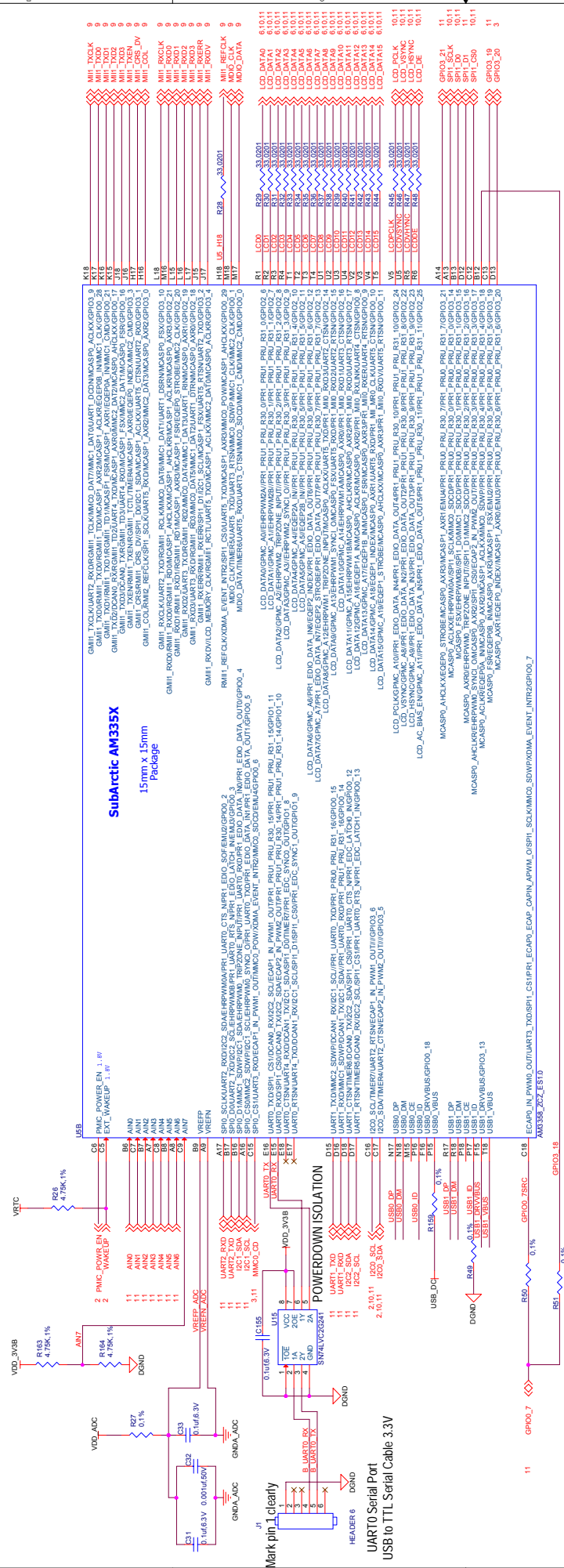
Monday, December 17, 2012

Sheet 1 of 11

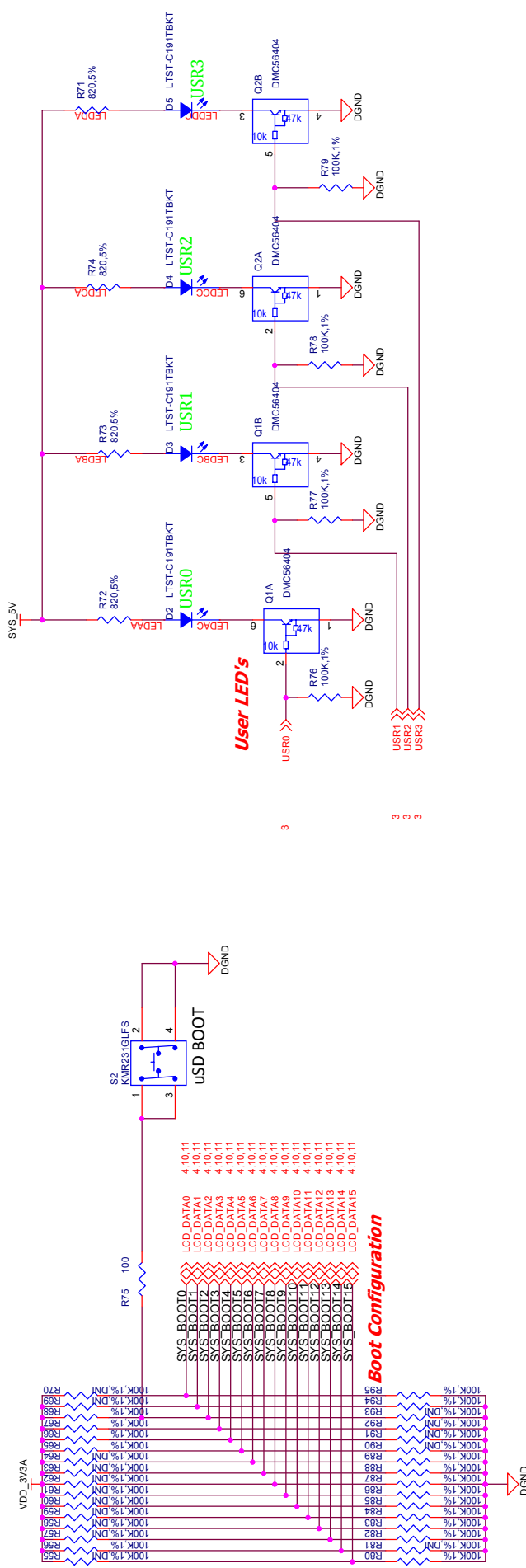


Title		BeagleBoneBlack Power Management
Size	Document Number	Rev A4A
B	450-5500-001	
Date: Monday, December 17, 2012		Sheet 2 of 11





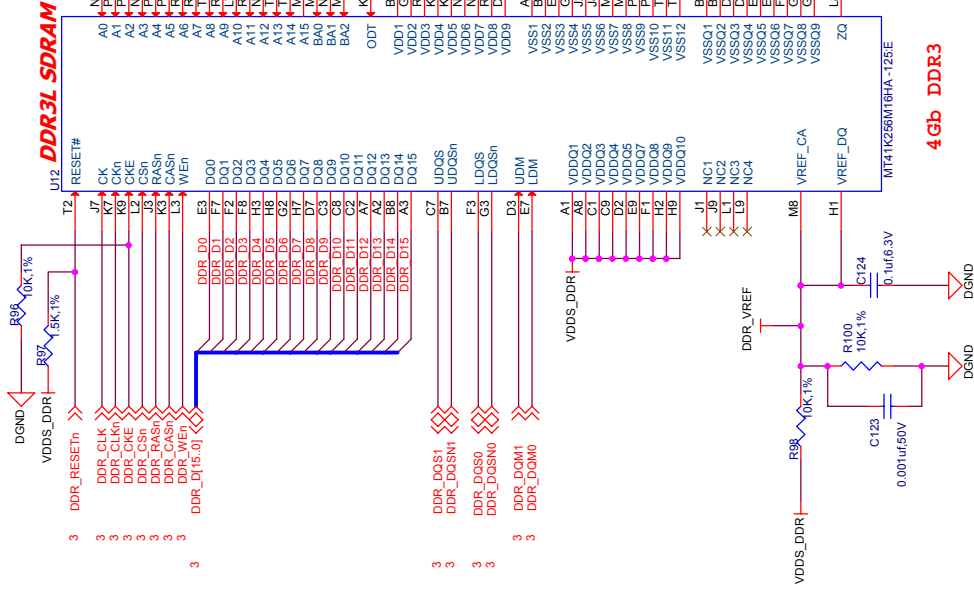




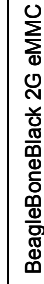
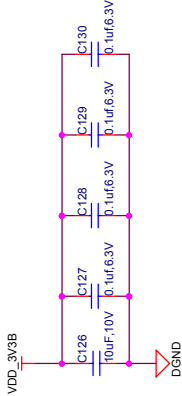
SYSBOOT[15:14]	SYSBOOT[13:12]	SYSBOOT[11:10]	SYSBOOT[9]	SYSBOOT[8]	SYSBOOT[7:6]	SYSBOOT[5]	SYSBOOT[4:0]	Boot Sequence
00b = 19.2MHz 01b = 24MHz 10b = 25MHz 11b = 26MHz	00b (all other values reserved)	Don't care for ROM code	Don't care for ROM code	Don't care for ROM code	Don't care for ROM code	0 = CLKOUT1 disabled 1 = CLKOUT1 enabled	11100b	MMC0   UART0   USB0[5]
00b = 19.2MHz 01b = 24MHz 10b = 25MHz 11b = 26MHz	00b (all other values reserved)	Don't care for ROM code	Don't care for ROM code	Don't care for ROM code	Don't care for ROM code	0 = CLKOUT1 disabled 1 = CLKOUT1 enabled	11000b	MMC0   SPI0   USB0[5]   UART0



Title			BeagleBoneBlack LED, Configuration, and Reset
Size	Document Number	Rev	
B	450-5500-001	A4A	
Date:	Monday, December 17, 2012	Sheet	6 of 11

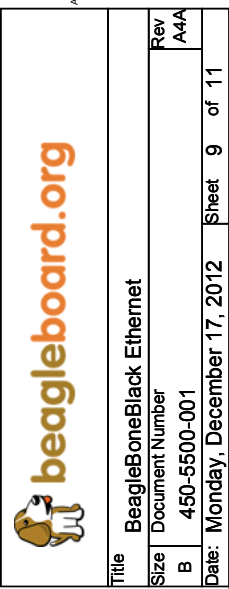


Title		
BeagleBoneBlack DDR3 Memory		
Size	Document Number	Rev
B	450-5500-001	A4A
Date:		Sheet 7 of 11

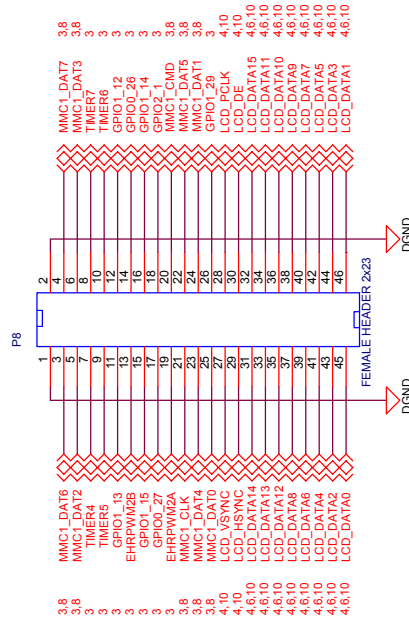


Title		BeagleBoneBlack 2G eMMC
Size	Document Number	
B	450-5500-001	
Date:		Monday, December 17, 2012
		Sheet 8 of 11

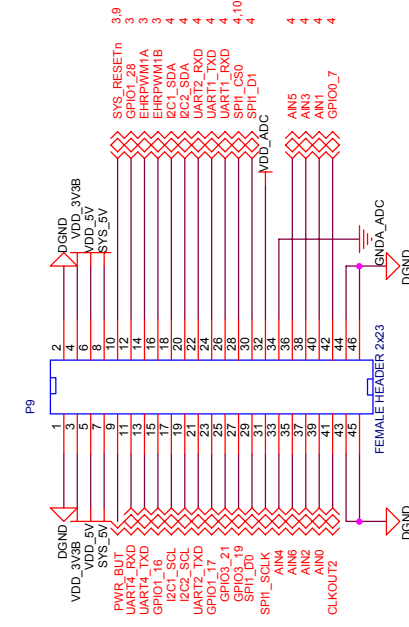




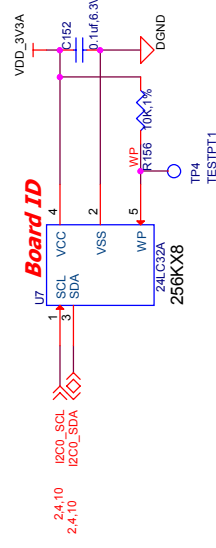
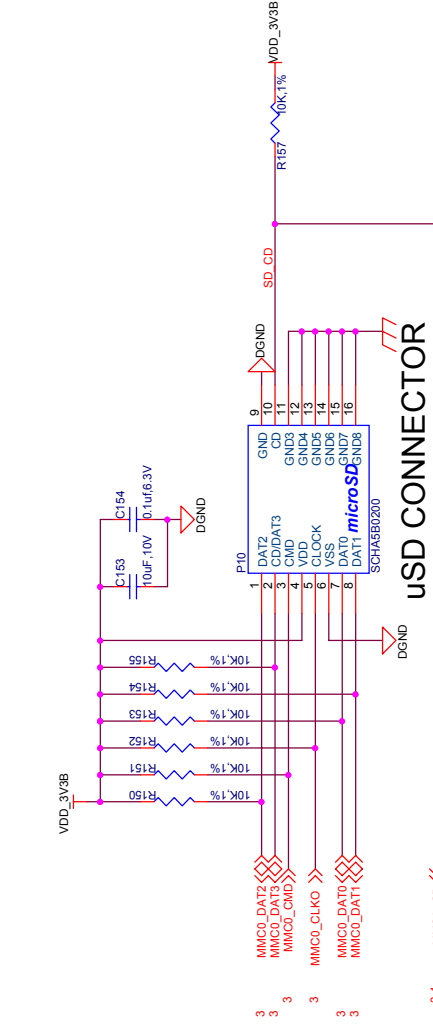




## EXPANSION HEADER



# EXPANSION HEADER



beagleboard.org

<b>Title</b> BeagleBoneBlack Expansion Headers, uSD and EEPROM			
<b>Size</b>	<b>Document Number</b>	<b>Rev</b>	
B	450-5500-001	A4A	
<b>Date:</b>	<b>Monday, December 17, 2012</b>	<b>Sheet</b>	<b>11 of 11</b>