

REV	Description	DATE	BY
A4A	Initial production Release.	11/19/2012	GC
A5	On the initial production release the processors were to be found incorrect as supplied by TI. Parts while marked AM3359 were actually AM3352. This revision uses the correct parts.	1/2/2013	GC

PAGE NO.	SCHEMATIC PAGE
1	COVER PAGE
2	POWER MANAGEMENT
3	PROCESSOR 1 OF 3, JTAG HEADER
4	PROCESSOR 2 OF 3, UAB PORTS
5	PROCESSOR 3 OF 3
6	LED, CONFIGURATION AND BUTTON
7	DDR3 MEMORY
8	eMMC FLASH
9	10/100 ETHERNET
10	HDMI FRAMER
11	EXP CONN, uSD

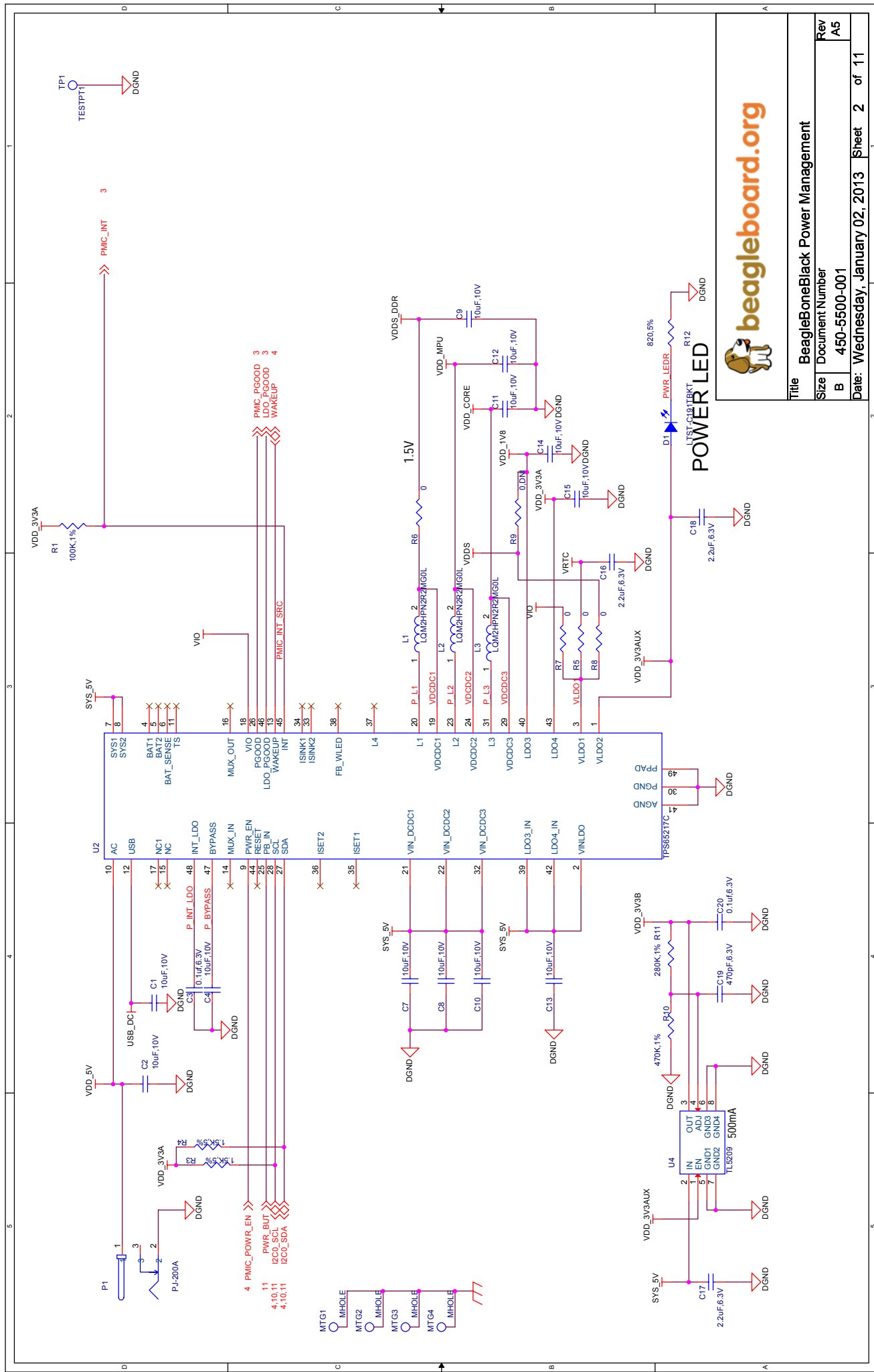
NOTE: PCB Revision for this board is Rev B1.

This schematic is *NOT SUPPORTED* and DOES NOT constitute a reference design. Only "community" support is allowed via resources at BeagleBoard.org/discuss.

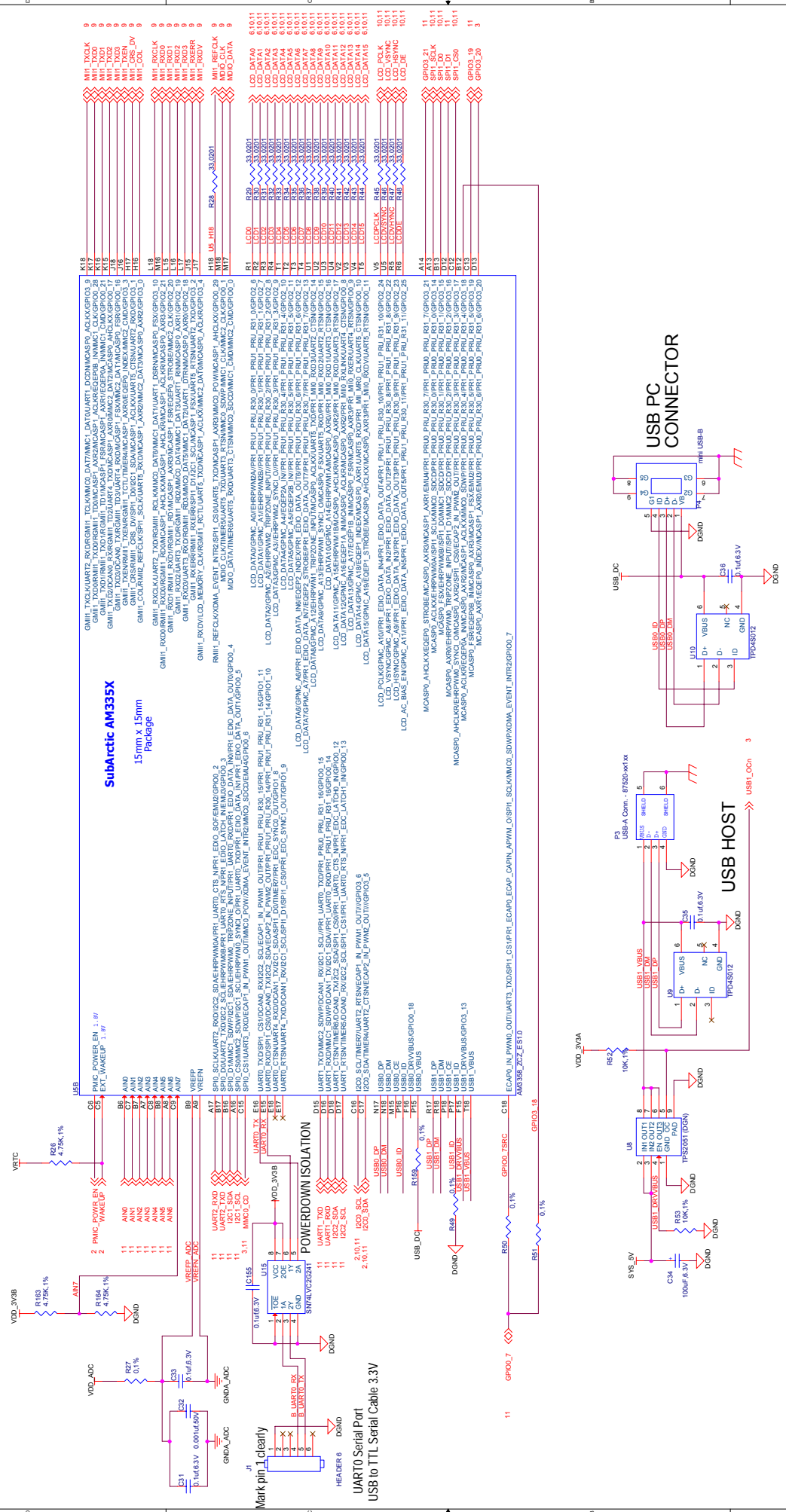
THERE IS NO WARRANTY FOR THIS DESIGN , TO THE EXTENT PERMITTED BY APPLICABLE LAW. EXCEPT WHEN OTHERWISE STATED IN WRITING THE COPYRIGHT HOLDERS AND/OR OTHER PARTIES PROVIDE THE DESIGN "AS IS" WITHOUT WARRANTY OF ANY KIND, EITHER EXPRESSED OR IMPLIED, INCLUDING, BUT NOT LIMITED TO, THE IMPLIED WARRANTIES OF MERCHANTABILITY AND FITNESS FOR A PARTICULAR PURPOSE. THE ENTIRE RISK AS TO THE QUALITY AND PERFORMANCE OF THE DESIGN IS WITH YOU. SHOULD THE DESIGN PROVE DEFECTIVE, YOU ASSUME THE COST OF ALL NECESSARY SERVICING, REPAIR OR CORRECTION.

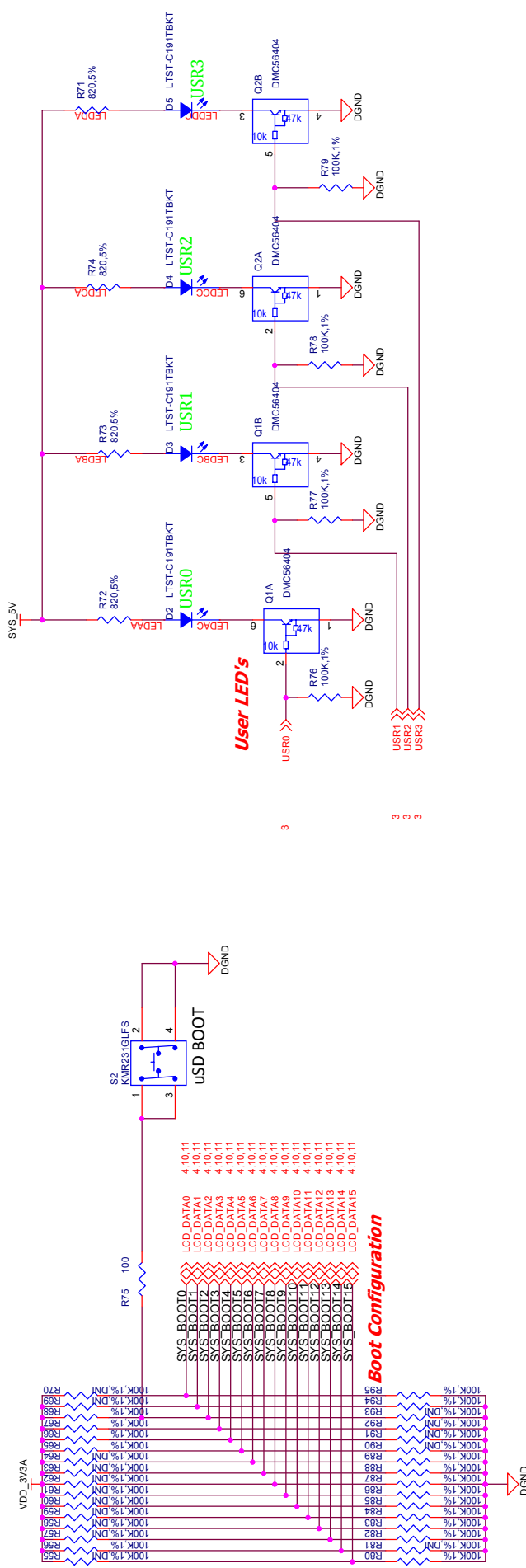


Title BeagleBoneBlack Cover Page		
Size	Document Number	Rev
B	450-5500-001	A5
Date: Wednesday, January 02, 2013 Sheet 1 of 11		



Title BeagleBoneBlack Power Management		
Size B	Document Number 450-5500-001	Rev A5
Date: Wednesday, January 02, 2013 Sheet 2 of 11		





SYSBOOT[15:14]	SYSBOOT[13:12]	SYSBOOT[11:10]	SYSBOOT[9]	SYSBOOT[8]	SYSBOOT[7:6]	SYSBOOT[5]	SYSBOOT[4:0]	Boot Sequence
00b = 19.2MHz 01b = 24MHz 10b = 25MHz 11b = 26MHz	00b (all other values reserved)	Don't care for ROM code	Don't care for ROM code	Don't care for ROM code	Don't care for ROM code	0 = CLKOUT1 disabled 1 = CLKOUT1 enabled	11100b	MMC0 UART0 USB0[5]
00b = 19.2MHz 01b = 24MHz 10b = 25MHz 11b = 26MHz	00b (all other values reserved)	Don't care for ROM code	Don't care for ROM code	Don't care for ROM code	Don't care for ROM code	0 = CLKOUT1 disabled 1 = CLKOUT1 enabled	11000b	MMC0 SPI0 USB0[5] UART0



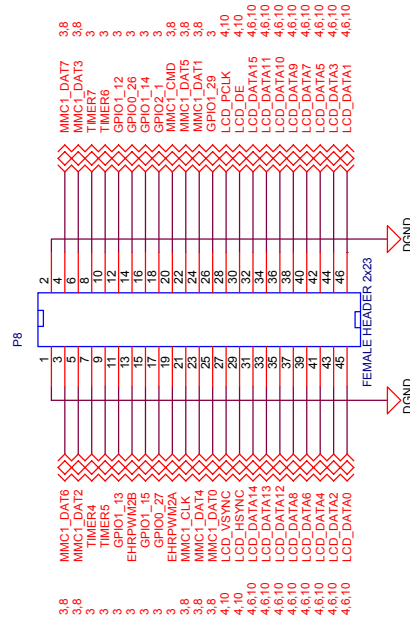
Title			BeagleBoneBlack LED, Configuration, and Reset		
Size	Document Number	Rev			
B	450-5500-001	A5			
Date:	Wednesday, January 02, 2013	Sheet	6	of	11



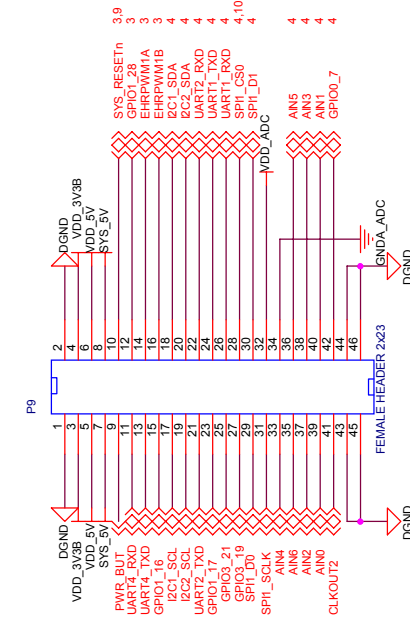
BeagleBoneBlack DDR3 Memory		Rev
Document Number		A5
B	450-5500-001	
Date: Wednesday, January 02, 2013		Sheet 7 of 11



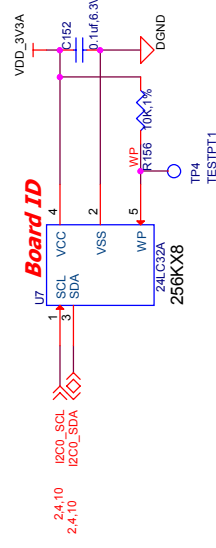
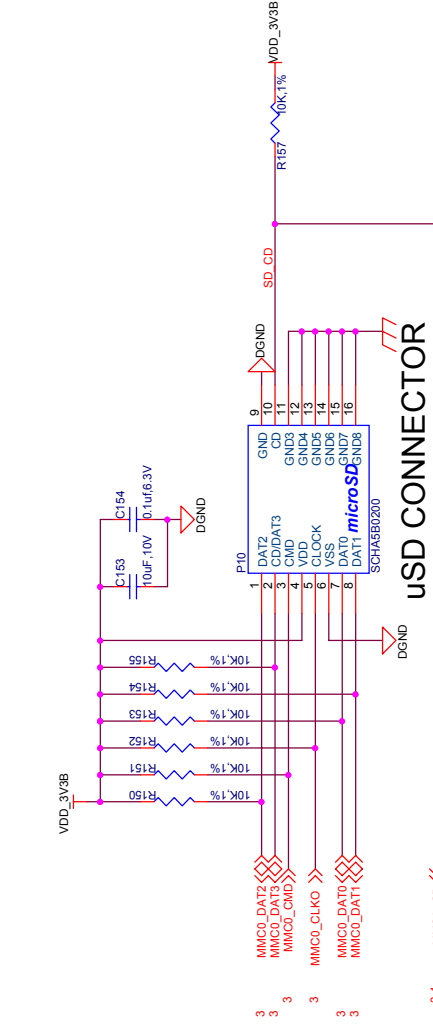
BeagleBoneBlack 2G eMMC			Rev A5
Document Number			
Size	B	450-5500-001	
Date:	Wednesday, January 02, 2013		Sheet 8 of 11



EXPANSION HEADER



EXPANSION HEADER



beagleboard.org

Title: BeagleBoneBlack Expansion Headers, uSD and EEPROM		
Size	Document Number	Rev
B	450-5500-001	A5
Date:	Wednesday, January 02, 2013	Sheet 11 of 11