

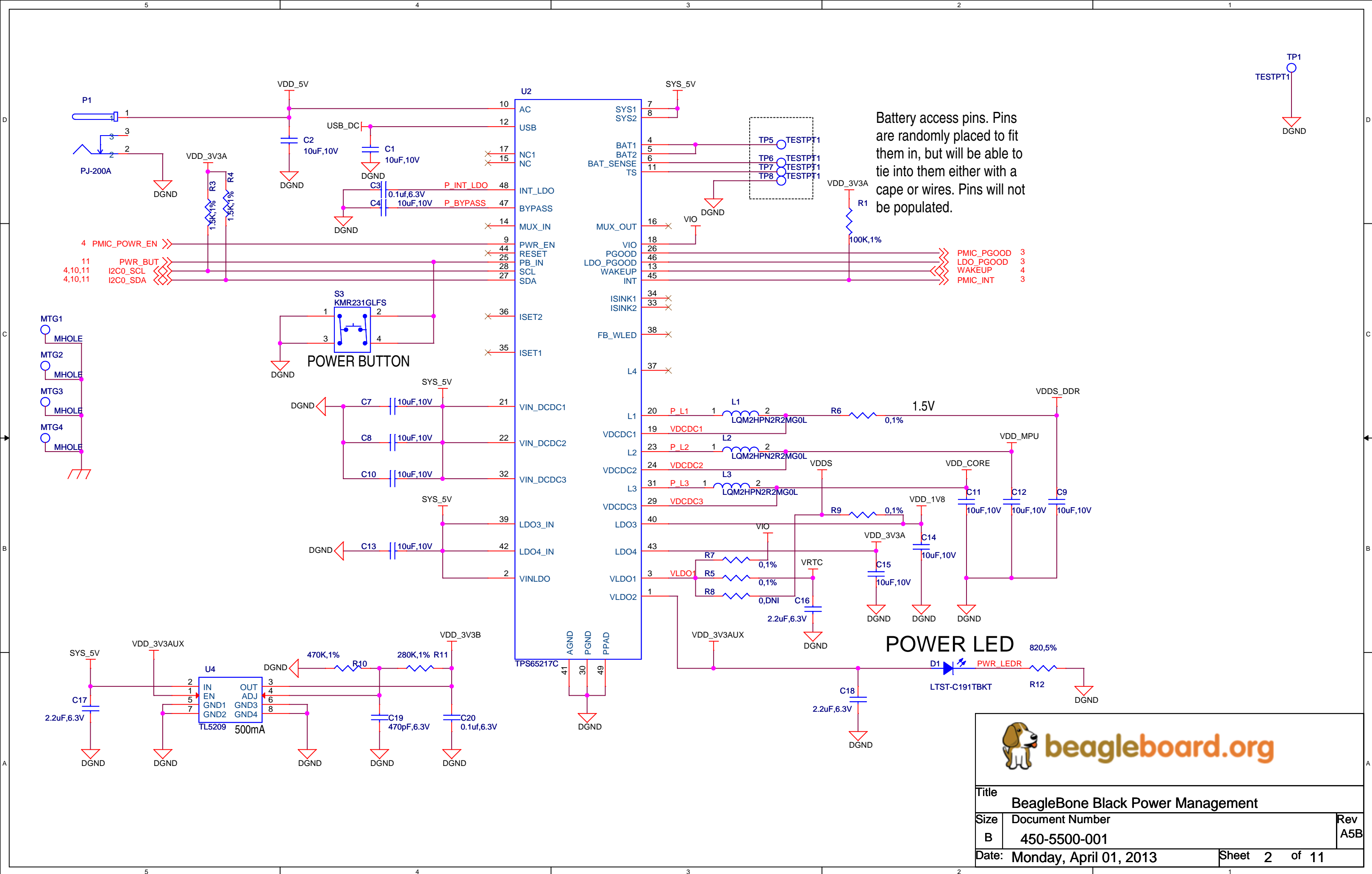
REV	Description	DATE	BY
A4A	Initial production Release.	11/19/2012	GC
A5	On the initial production release the processors were to be found incorrect as supplied by TI. Parts while marked AM3359 were actually AM3352. This revision uses the correct parts.	1/2/2013	GC
A5A	1. Deleted R29-R44 from the LCD lines. 2. Added 47pf capacitors C156-C173 to LCD data lines to ground. 3. Changed schematic revision to A5A. 4. Changed a few footprints after PCB update for above changes. 5. Added access point for the battery function of the TPS65217C. 6. Added Ferrite beads in series with LED power and 5V power rail of the USB host connector. Required to pass FCC/CE testing due to noise emissions on that pin. 7. Added power button to enable sleep, wakeup, power down and power up features on the system. 8. Added Modification to add 100K ohm resistor to ground to prvent crosstalk when serial cable is not plugged in.	2/8/2013	GC
A5B	1. Added 100K pulldown on J1 pin 4 to prvent crosstalk when serial cable is not connected into PCB layout.	4/1/2013	

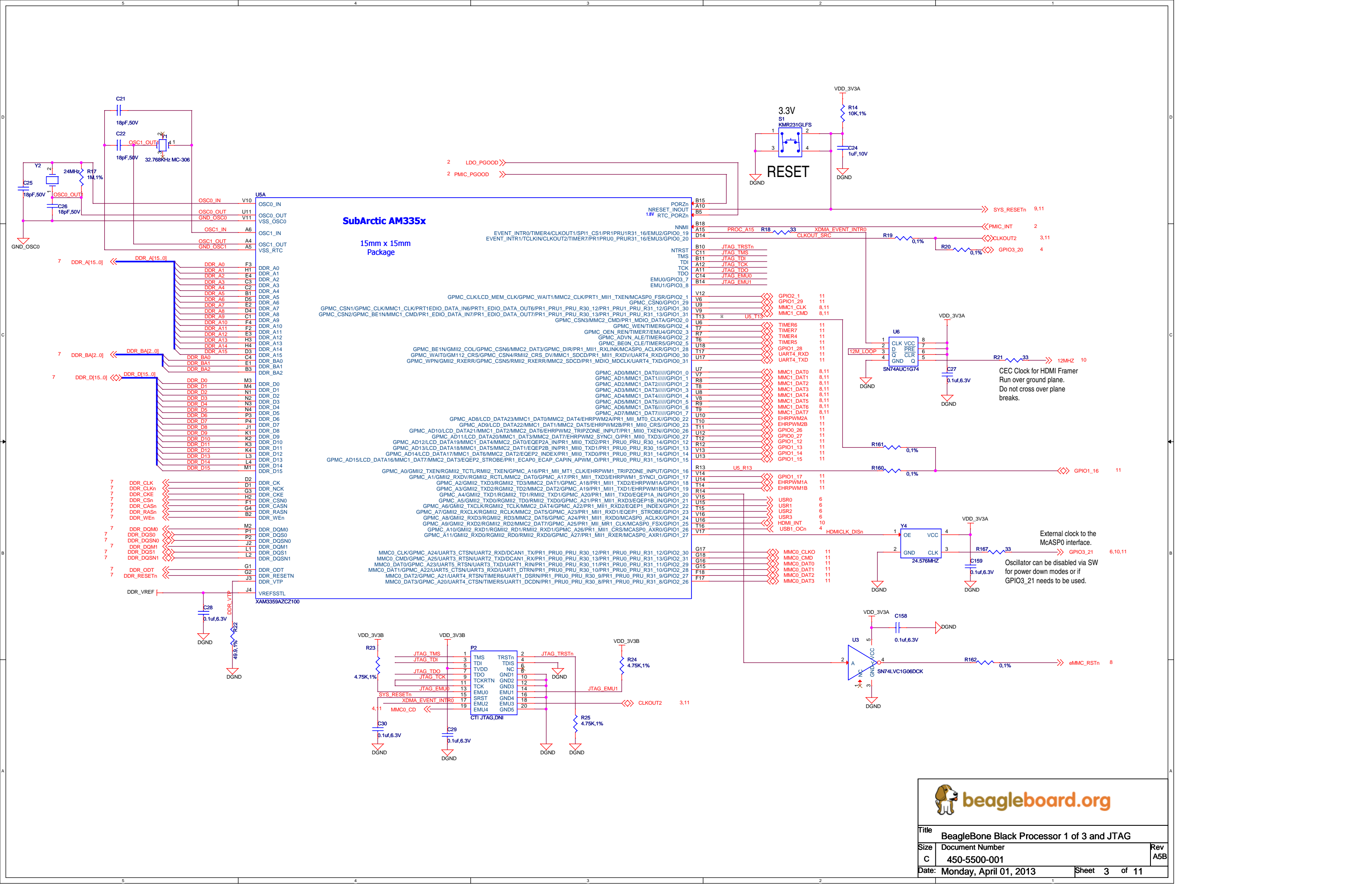
PAGE NO.	SCHEMATIC PAGE
1	COVER PAGE
2	POWER MANAGEMENT
3	PROCESSOR 1 OF 3, JTAG HEADER
4	PROCESSOR 2 OF 3, UAB PORTS
5	PROCESSOR 3 OF 3
6	LED, CONFIGURATION AND BUTTON
7	DDR3 MEMORY
8	eMMC FLASH
9	10/100 ETHERNET
10	HDMI FRAMER
11	EXP CONN, uSD

NOTE: PCB Revision for this board is Rev B4.

This schematic is **\*NOT SUPPORTED\*** and DOES NOT constitute a reference design. Only "community" support is allowed via resources at [BeagleBoard.org/discuss](http://BeagleBoard.org/discuss).

THERE IS NO WARRANTY FOR THIS DESIGN , TO THE EXTENT PERMITTED BY APPLICABLE LAW. EXCEPT WHEN OTHERWISE STATED IN WRITING THE COPYRIGHT HOLDERS AND/OR OTHER PARTIES PROVIDE THE DESIGN "AS IS" WITHOUT WARRANTY OF ANY KIND, EITHER EXPRESSED OR IMPLIED, INCLUDING, BUT NOT LIMITED TO, THE IMPLIED WARRANTIES OF MERCHANTABILITY AND FITNESS FOR A PARTICULAR PURPOSE. THE ENTIRE RISK AS TO THE QUALITY AND PERFORMANCE OF THE DESIGN IS WITH YOU. SHOULD THE DESIGN PROVE DEFECTIVE, YOU ASSUME THE COST OF ALL NECESSARY SERVICING, REPAIR OR CORRECTION.





Title BeagleBone Black Processor 1 of 3 and JTAG

Size Document Number

C 450-5500-001

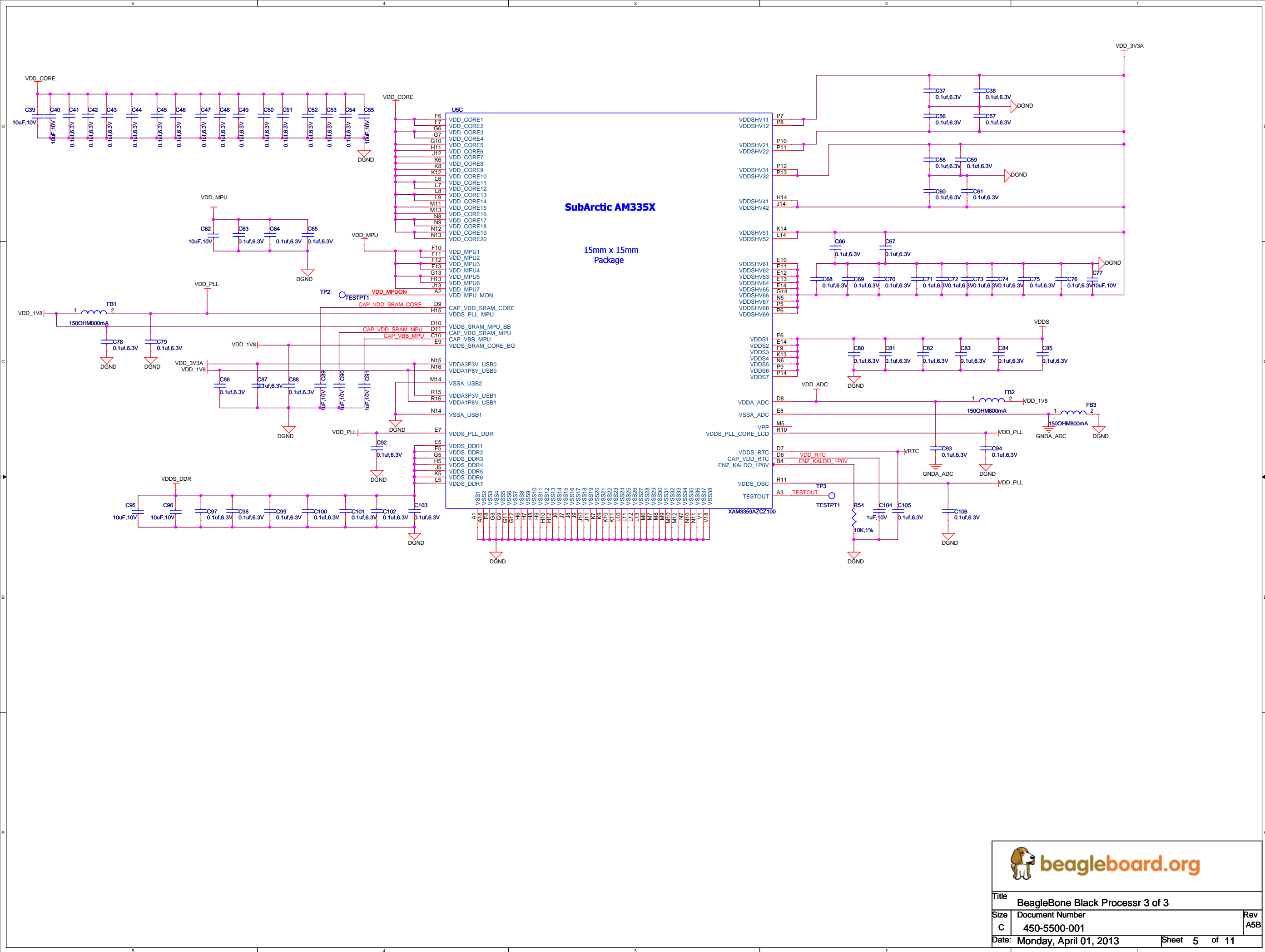
Date: Monday, April 01, 2013

Sheet 3 of 11

Rev

A5B





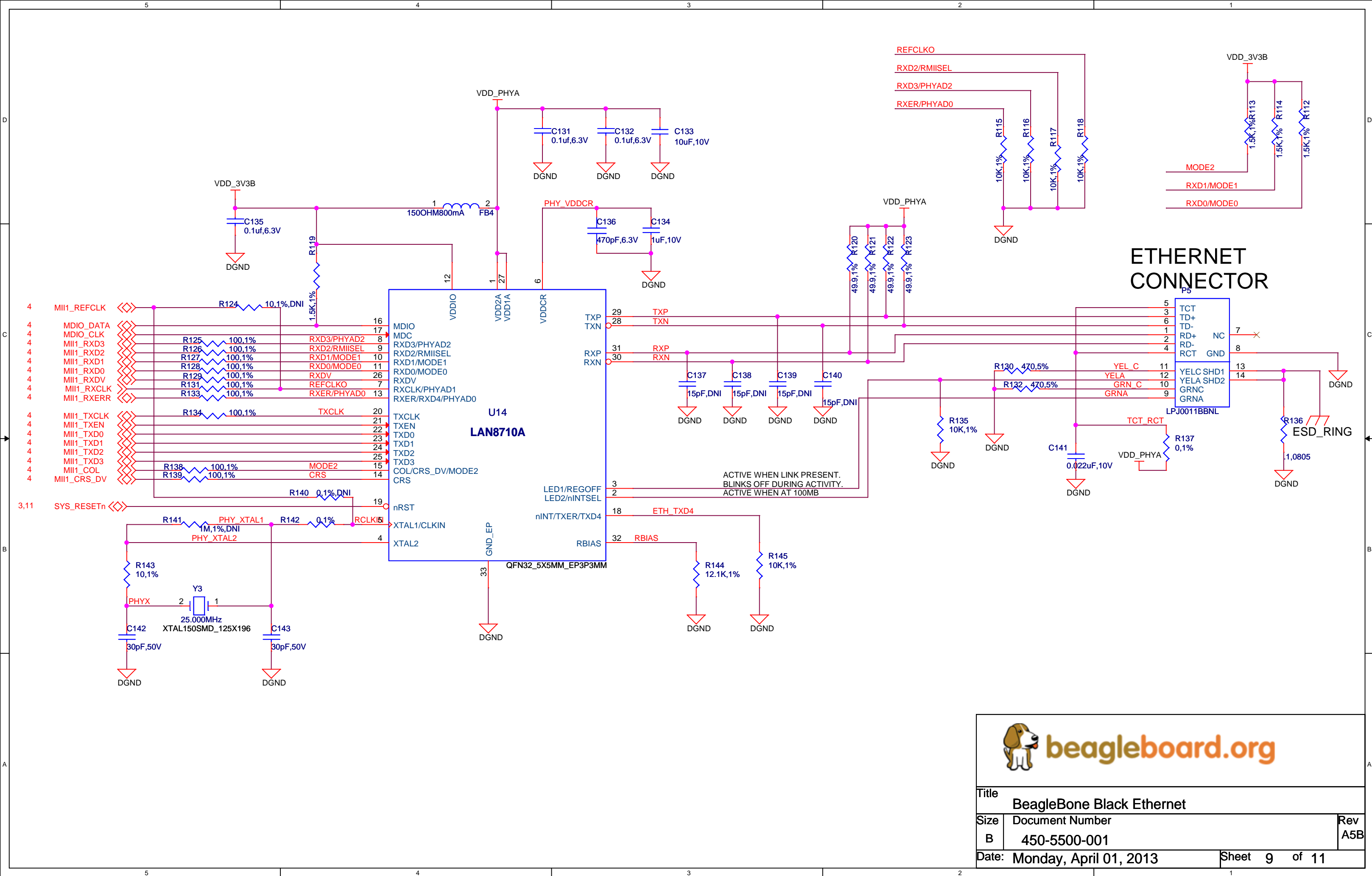


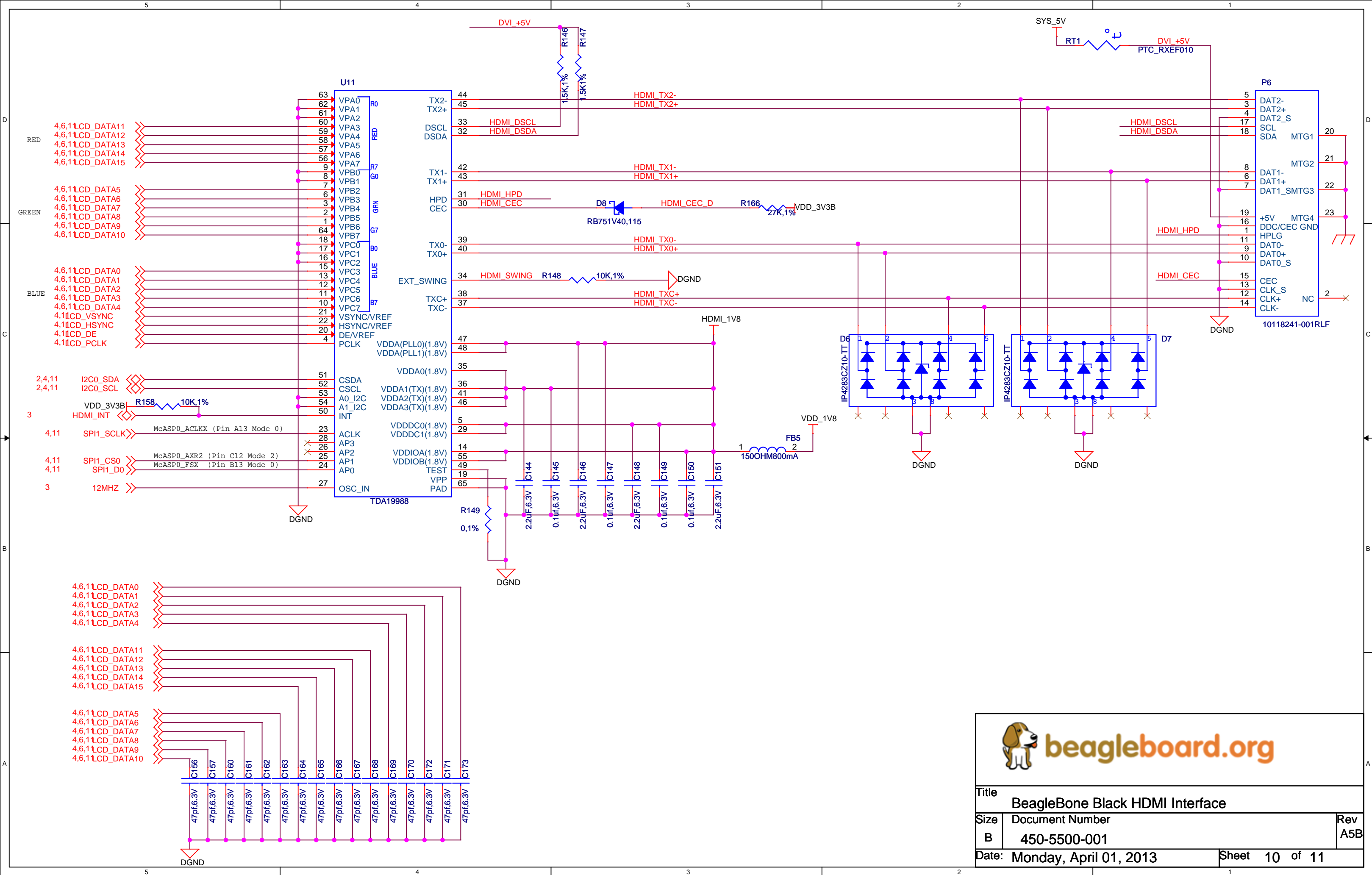




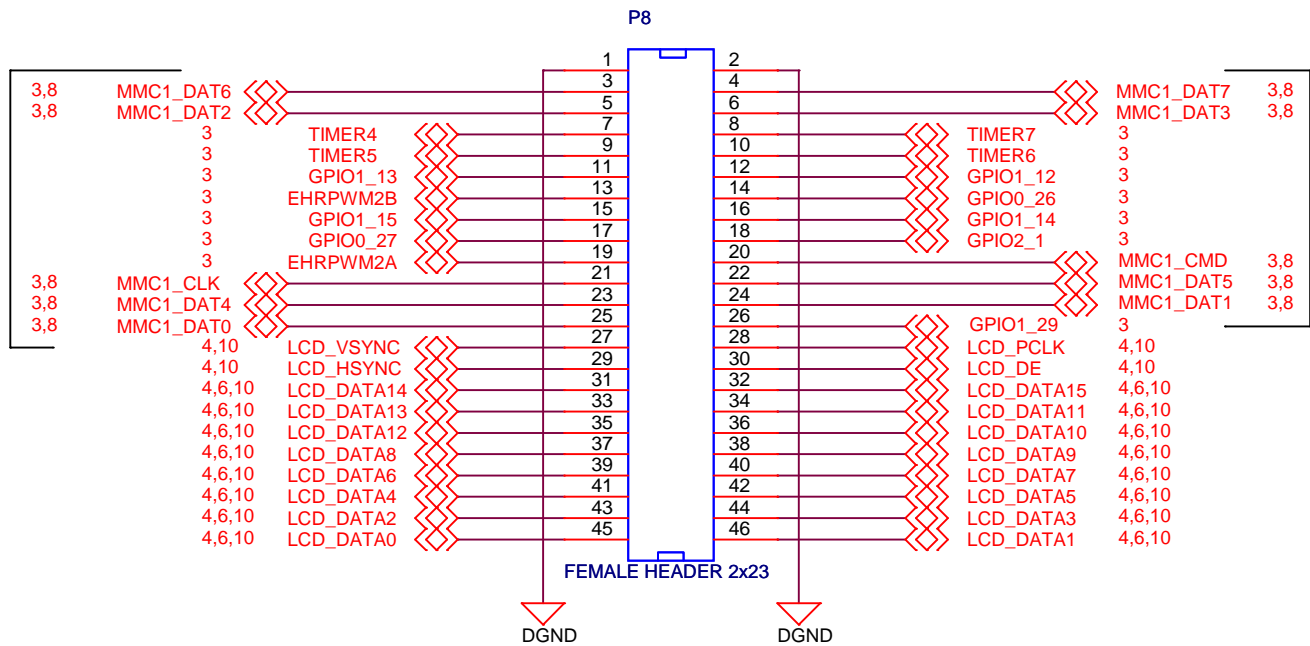






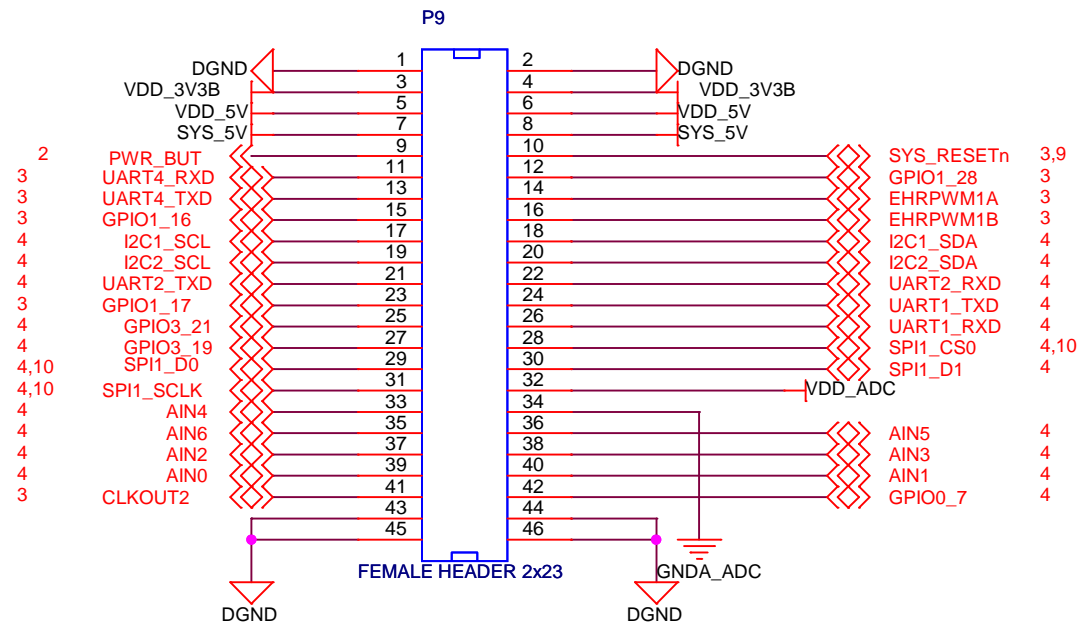


CAUTION: USED ON BOARD

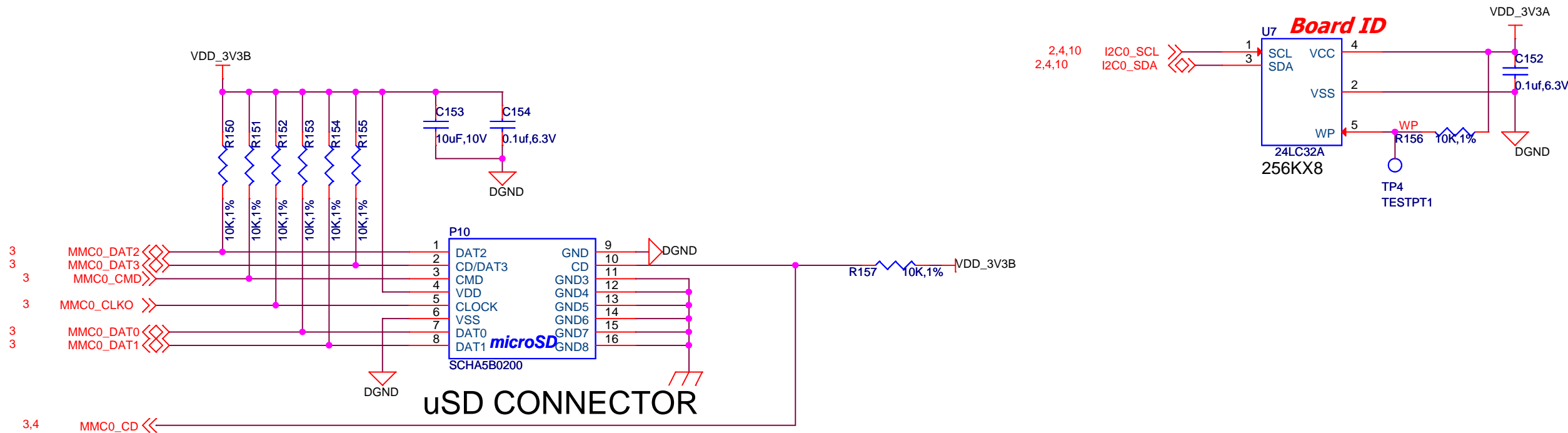


## EXPANSION HEADER

CAUTION: USED ON BOARD



## EXPANSION HEADER



## uSD CONNECTOR

**beagleboard.org**

Title BeagleBone Black Expansion Headers, uSD.and EEPROM		
Size B	Document Number 450-5500-001	Rev A5B
Date: Monday, April 01, 2013		Sheet 11 of 11