

Plugins | Installed (13)

Search...

- ✓ Crayfish
- ✓ DB Manager
- ✓ DHI Res1D loader
- ✓ Geometry Checker
- ✓ GRASS 7
- ✓ GRASS GIS provider
- ✓ MetaSearch Catalog Client
- ✓ OfflineEditing
- ✓ OrfeoToolbox provider
- ✓ PCRaster Tools
- ✓ Processing
- ✓ SAGA GIS provider
- ✓ Topology Checker

DHI Res1D loader

Load DHI res1D as QGIS Mesh Layer

Load DHI res1D as QGIS Mesh Layer

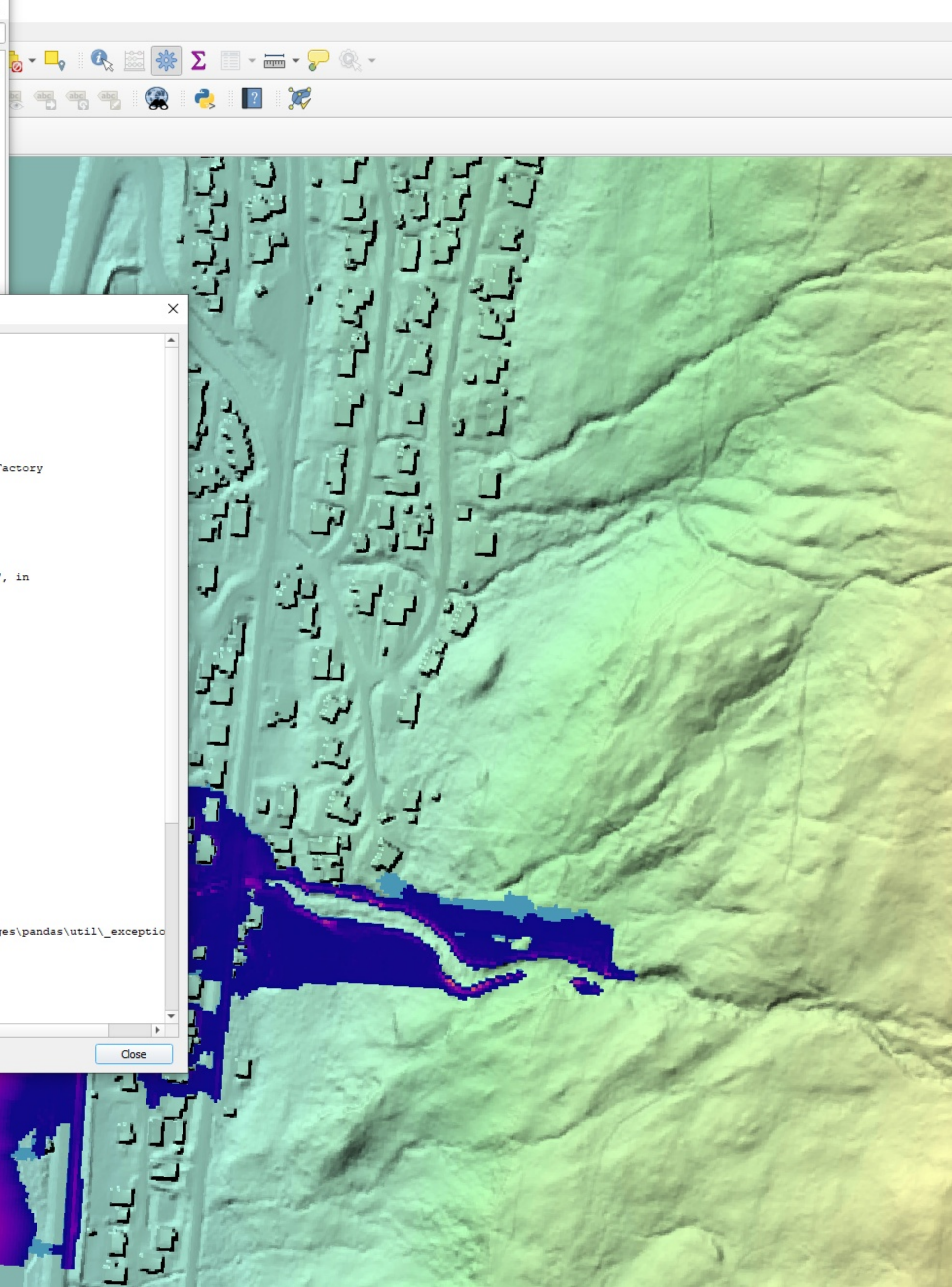
Category Plugins

Tags python, dhi, res1d, mesh

More info [homepage](#) [bug tracker](#) [code repository](#)

Author Vincent Cloarec

Installed version 1.0.0



Couldn't load plugin 'plugin' due to an error when calling its classFactory() method

Couldn't load plugin 'plugin' due to an error when calling its classFactory() method

ImportError: cannot import name 'find_stack_level' from 'pandas.util._exceptions' (C:\OSGeo4W\apps\Python39\lib\site-packages\pandas\util_exceptions.py)

Traceback (most recent call last):

```

File "C:\OSGeo4W\apps\qgis\./python\qgis\utils.py", line 423, in _startPlugin
  plugins[packageName] = package.classFactory(iface)
File "C:\Users\azmtas01\AppData\Roaming\QGIS\QGIS3\profiles\Tassew/python/plugins/plugin\__init__.py", line 15, in classFactory
  from .res1d_loader import Res1D
File "C:\OSGeo4W\apps\qgis\./python\qgis\utils.py", line 888, in _import
  mod = _builtin_import(name, globals, locals, fromlist, level)
File "C:\Users\azmtas01\AppData\Roaming\QGIS\QGIS3\profiles\Tassew/python/plugins/plugin/res1d_loader.py", line 19, in
  from .res1d_loader_dialog import Res1DDialog
File "C:\OSGeo4W\apps\qgis\./python\qgis\utils.py", line 888, in _import
  mod = _builtin_import(name, globals, locals, fromlist, level)
File "C:\Users\azmtas01\AppData\Roaming\Python\Python39\site-packages\mikeioold\res1d.py", line 27, in
  from mikeioold.res1d import Res1D
File "C:\OSGeo4W\apps\qgis\./python\qgis\utils.py", line 888, in _import
  mod = _builtin_import(name, globals, locals, fromlist, level)
File "C:\Users\azmtas01\AppData\Roaming\Python\Python39\site-packages\mikeioold\res1d.py", line 3, in
  import pandas as pd
File "C:\OSGeo4W\apps\qgis\./python\qgis\utils.py", line 888, in _import
  mod = _builtin_import(name, globals, locals, fromlist, level)
File "C:\OSGeo4W\apps\Python39\lib\site-packages\pandas\_init_.py", line 52, in
  from pandas.core.api import
File "C:\OSGeo4W\apps\qgis\./python\qgis\utils.py", line 888, in _import
  mod = _builtin_import(name, globals, locals, fromlist, level)
File "C:\OSGeo4W\apps\Python39\lib\site-packages\pandas\core\api.py", line 14, in
  from pandas.core.algorithms import factorize, unique, value_counts
File "C:\OSGeo4W\apps\qgis\./python\qgis\utils.py", line 888, in _import
  mod = _builtin_import(name, globals, locals, fromlist, level)
File "C:\OSGeo4W\apps\Python39\lib\site-packages\pandas\core\algorithms.py", line 58, in
  from pandas.core.indexers import validate_indices
File "C:\OSGeo4W\apps\qgis\./python\qgis\utils.py", line 888, in _import
  mod = _builtin_import(name, globals, locals, fromlist, level)
File "C:\OSGeo4W\apps\Python39\lib\site-packages\pandas\core\indexers\_init_.py", line 1, in
  from pandas.core.indexers.utils import
File "C:\OSGeo4W\apps\qgis\./python\qgis\utils.py", line 888, in _import
  mod = _builtin_import(name, globals, locals, fromlist, level)
File "C:\OSGeo4W\apps\Python39\lib\site-packages\pandas\core\indexers\utils.py", line 18, in
  from pandas.util._exceptions import find_stack_level
ImportError: cannot import name 'find_stack_level' from 'pandas.util._exceptions' (C:\OSGeo4W\apps\Python39\lib\site-packages\pandas\util\_exceptio

```

Python version: 3.9.5 (tags/v3.9.5:0a7dcbd, May 3 2021, 17:27:52) [MSC v.1928 64 bit (AMD64)]
QGIS version: 3.24.0-Tisler Tisler, 6b44a42058

Close