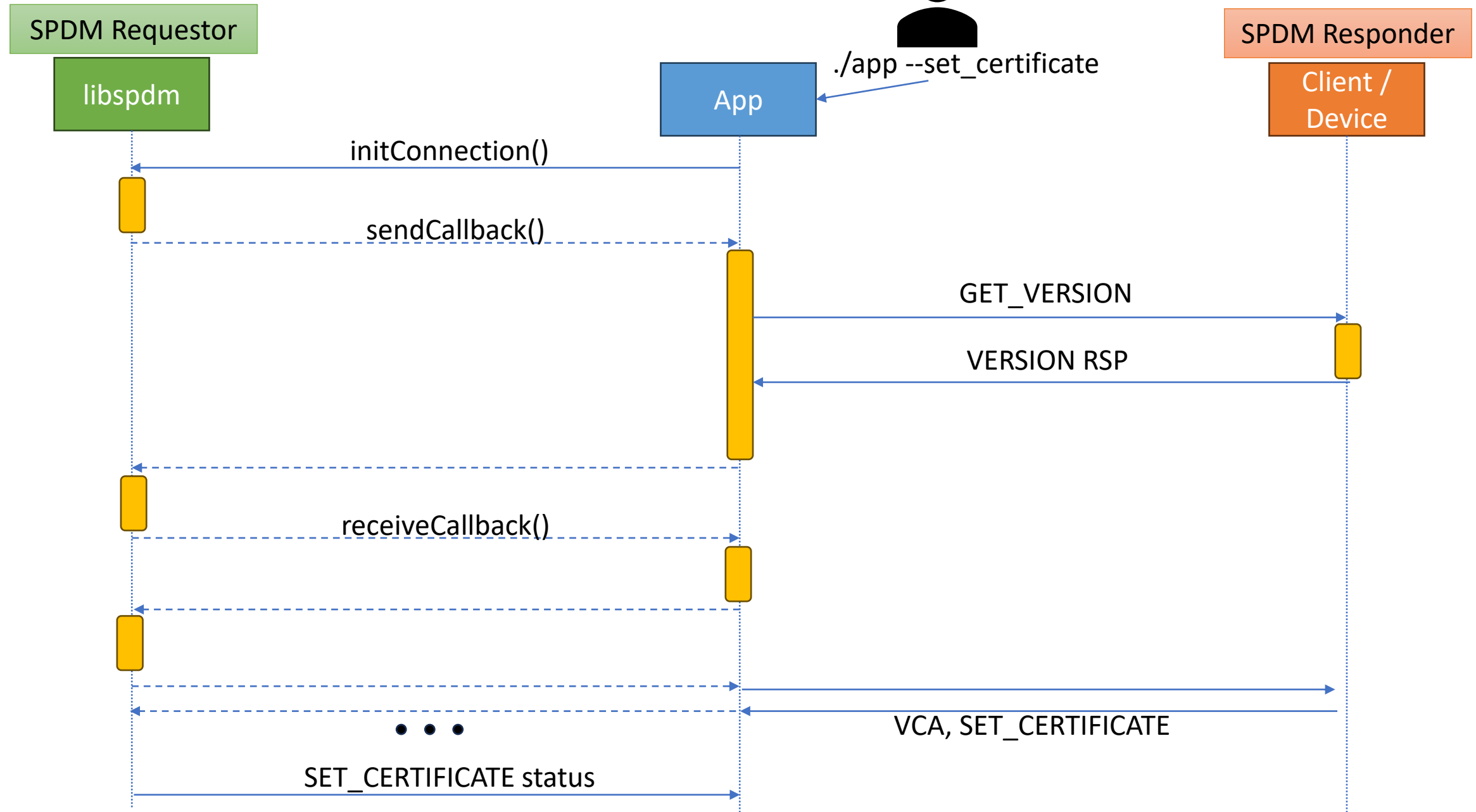
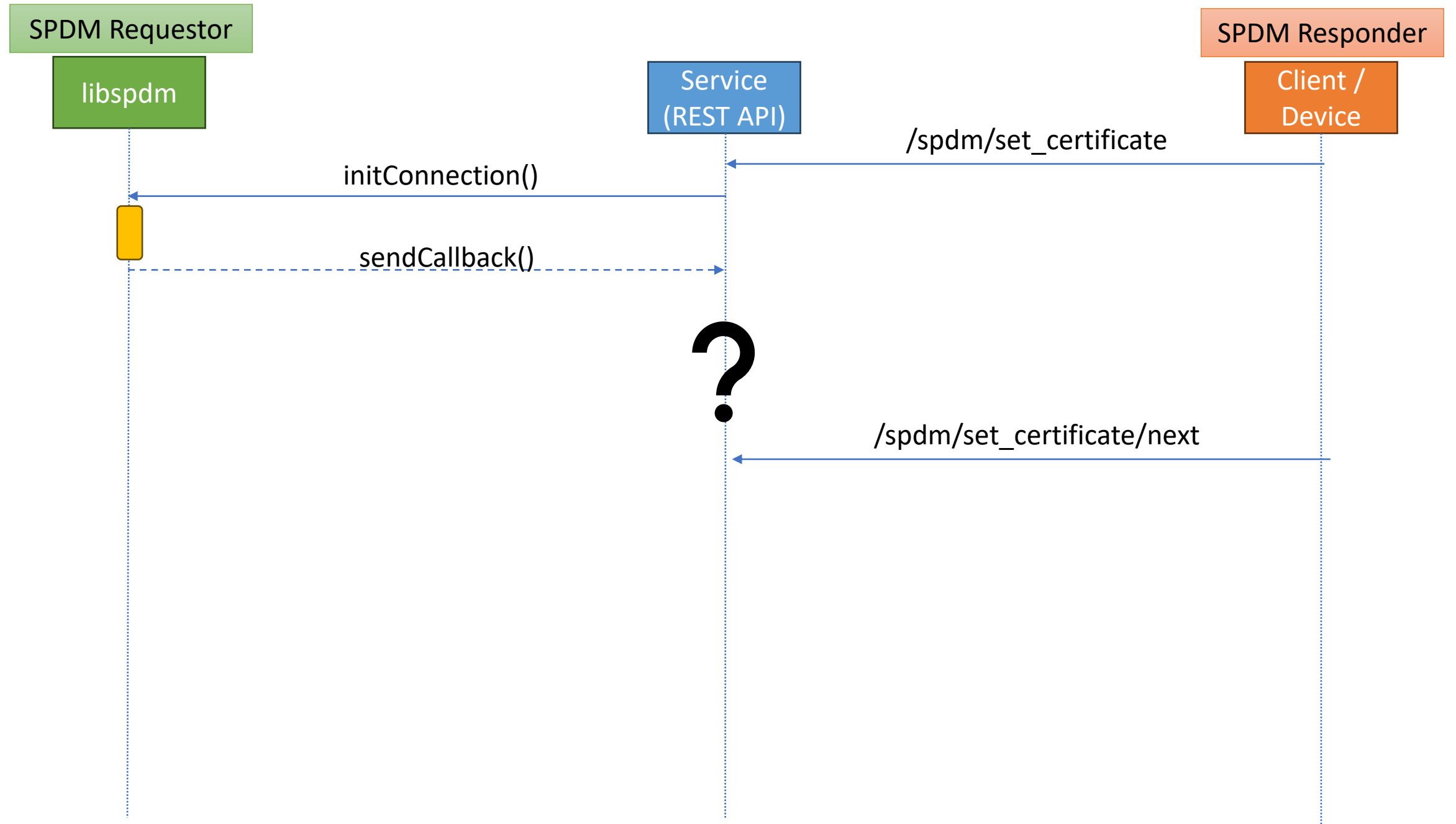


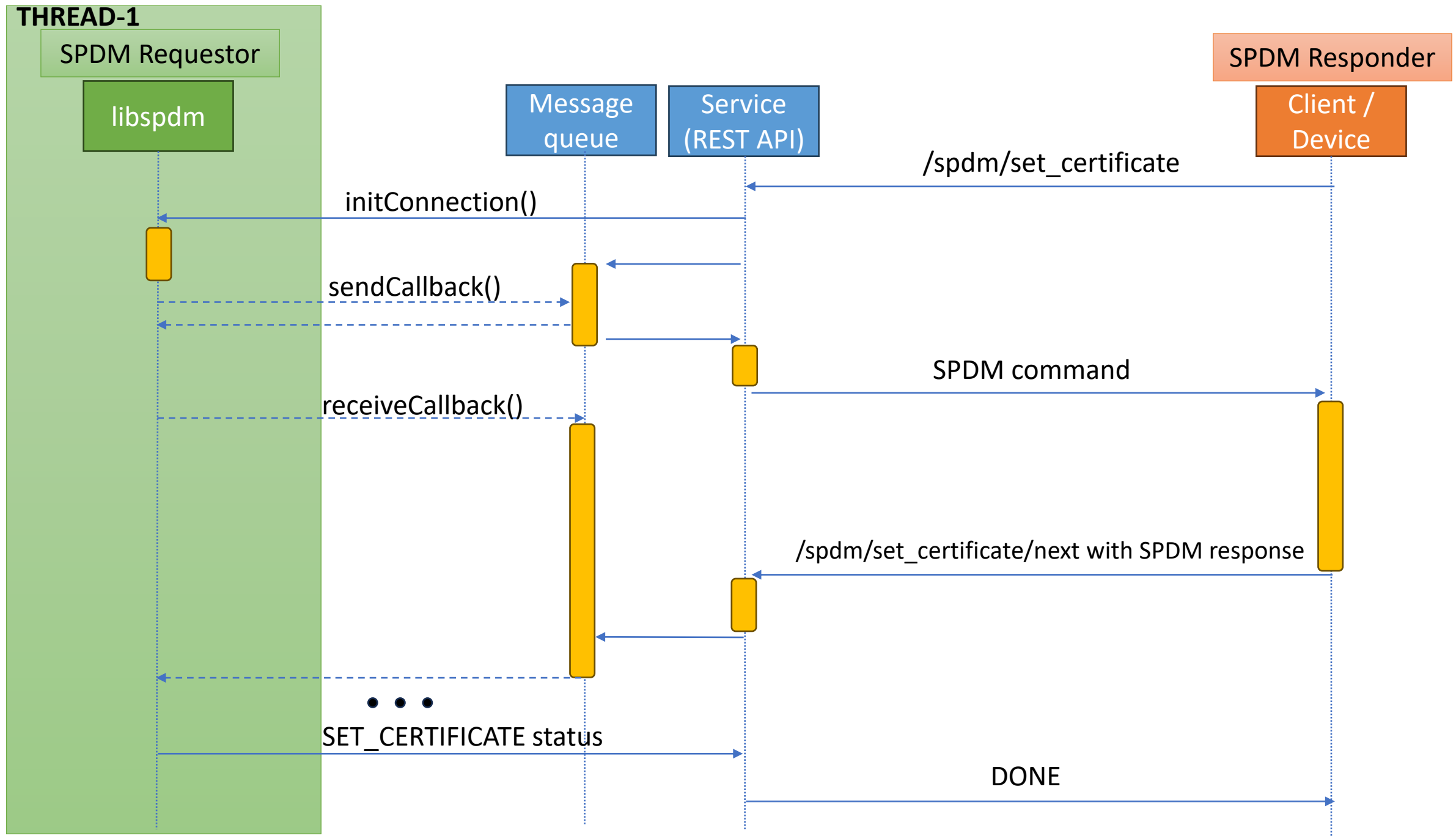
CURRENT



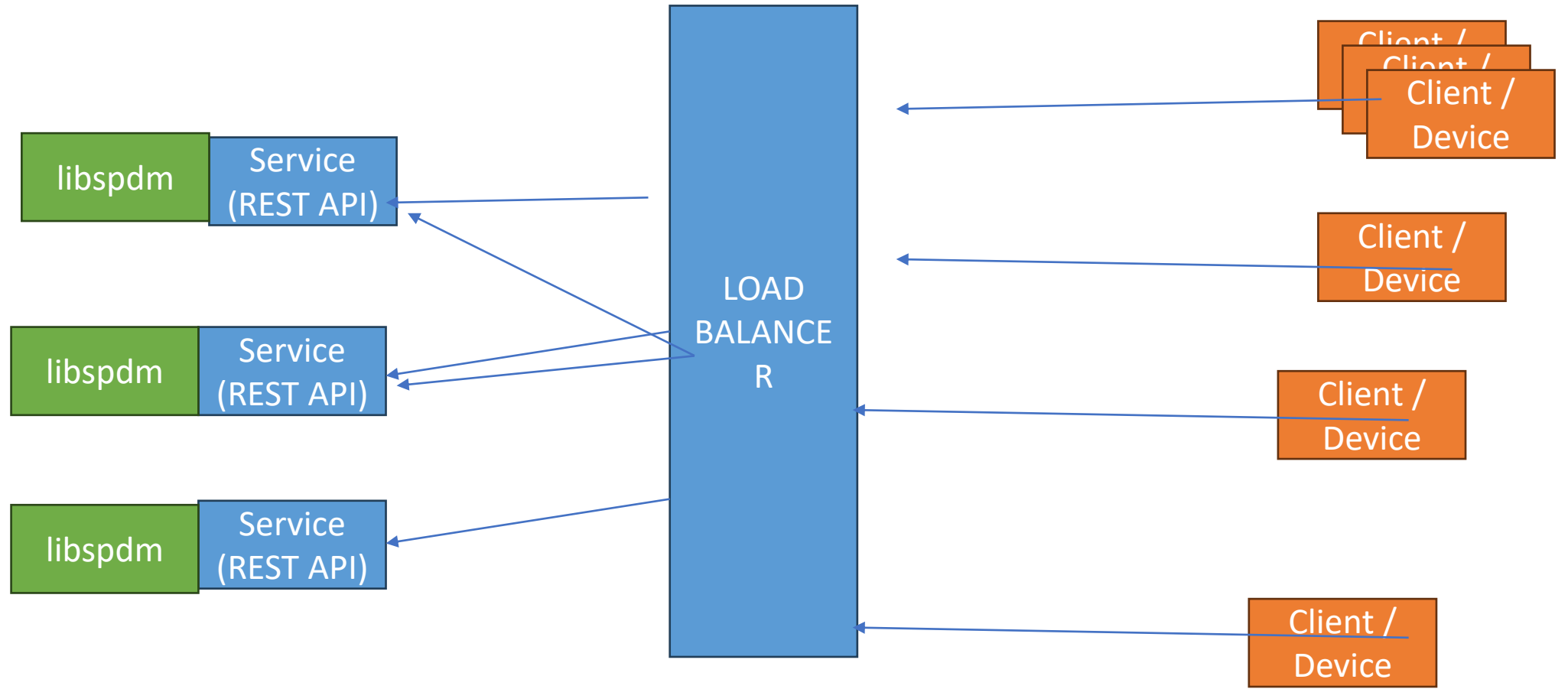
PROBLEM IN REST API SERVICE



CURRENT WORKAROUND IN REST API SERVICE



PROBLEM WITH MULTI-INSTANCES BEHIND LOAD BALANCER



PROPOSED LIBSPDM API SPLIT

```
libspdm_return_t libspdm_get_measurement_send_message(void
*spdm_context, const uint32_t *session_id,
                uint8_t request_attribute,
                uint8_t measurement_operation,
                uint8_t slot_id,
                uint8_t *content_changed,
                uint8_t *number_of_blocks,
                uint32_t *measurement_record_length,
                void *measurement_record,
                const void *requester_nonce_in,
                void *requester_nonce,
                void *responder_nonce,
                void *opaque_data,
                size_t *opaque_data_size ,
                char* output_buffer);
```

```
libspdm_return_t libspdm_get_measurement_handle_response(void
*spdm_context, const uint32_t *session_id,
                uint8_t request_attribute,
                uint8_t measurement_operation,
                uint8_t slot_id,
                uint8_t *content_changed,
                uint8_t *number_of_blocks,
                uint32_t *measurement_record_length,
                void *measurement_record,
                const void *requester_nonce_in,
                void *requester_nonce,
                void *responder_nonce,
                void *opaque_data,
                size_t *opaque_data_size,
                char* input_buffer);
```

char* output_buffer - contains message to be sent

char* input_buffer - contains received response

PROPOSED LIBSPDM API SPLIT – called together under existing method for backward compatibility

```
libspdm_return_t libspdm_get_measurement(...) {  
    char output_buffer[...];  
    char input_buffer[...];  
    libspdm_get_measurement_send_message(..., output_buffer);  
    libspdm_device_send_message_func(output_buffer);  
    libspdm_device_receive_message_func(input_buffer);  
    libspdm_get_measurement_handle_response(..., input_buffer);  
}
```

char* output_buffer - contains message to be sent

char* input_buffer - contains received response

FINAL IMPLEMENTATION WITH NEW LIBSPDM APPROACH IN REST API SERVICE

