

## Remote

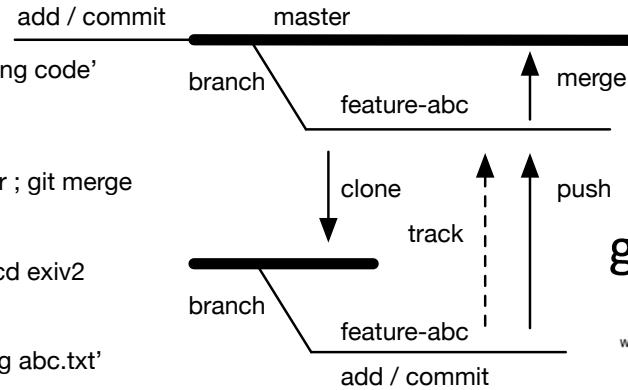
```
$ mkdir -p ~/gnu/exiv2 ; cd ~/gnu/exiv2 ; git init
$ cp -R /wheres/the/code/* . ; git add . ; git commit -m 'adding code'
$ git branch feature-abc
.... and to integrate ...
$ git checkout feature-abc ; cat abc.txt ; git checkout master ; git merge
```

## Local

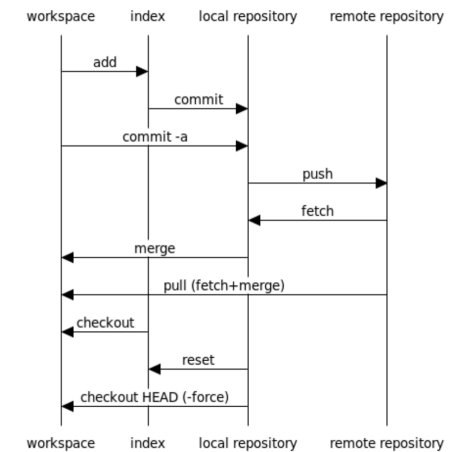
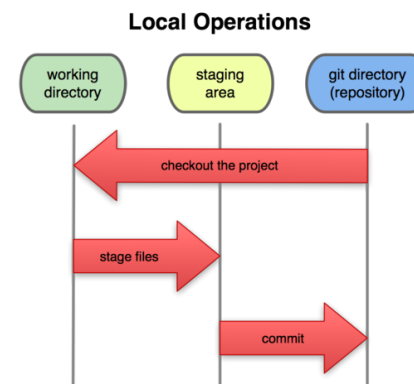
```
$ git clone ssh://rmills@rmills-mbp/Users/rmills/gnu/exiv2 ; cd exiv2
$ git checkout -tb feature-abc origin/feature-abc
$ echo abc > abc.txt ; git add abc.txt ; git commit -m 'adding abc.txt'
$ git push
```

## Client Configuration

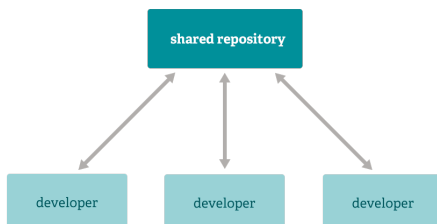
```
$ git config --global user.name 'Robin Mills'
$ git config --global user.email robin@clanmills.com
$ git config --global push.default matching
nothing      Do not push anything
matching     Push all matching branches (default)
tracking     Push the current branch to whatever it is tracking
current      Push the current branch
```



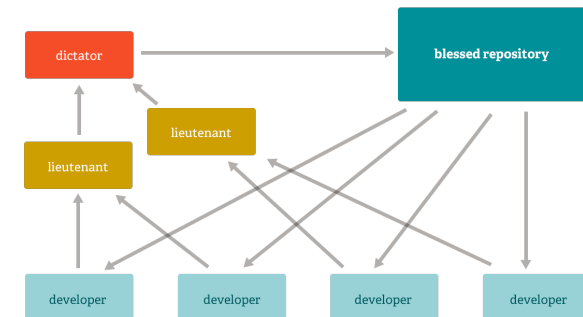
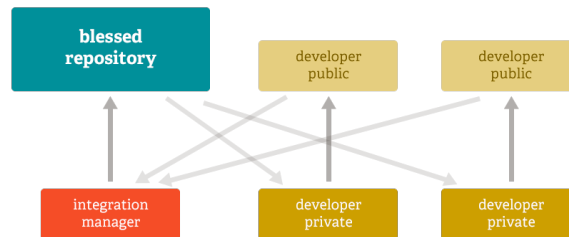
## git data movement



## Perforce/SVN/CVS Server Model



## Git Workflow Models



Git Orientation  
robin@clanmills.com  
Robin Mills 2013-10-25