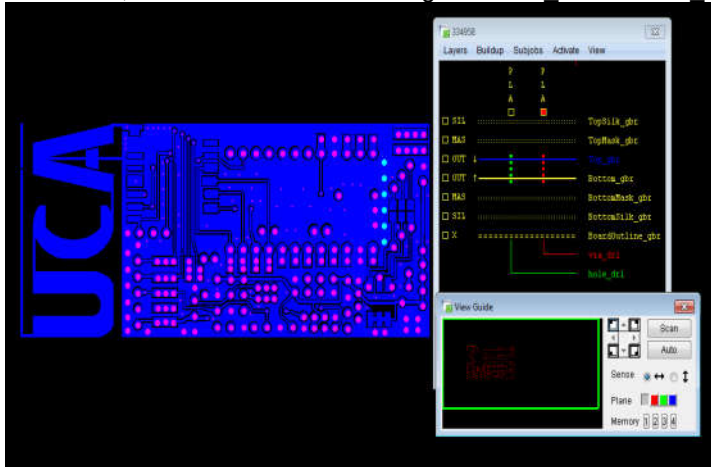


Exception: 1

In data set, two excellon drill files are given "hole_dr1" and "via_dr1" not clear to us.



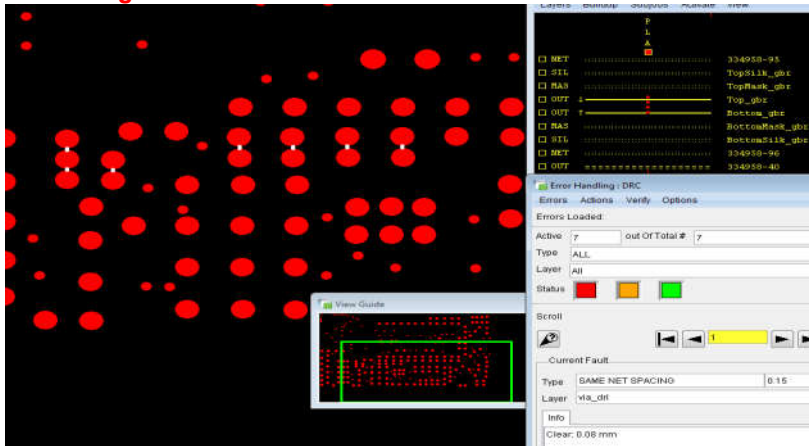
Suggested solution :

We can consider both excellon drill files are PTH and continued the order

Exception: 2

Minimum drill-drill distance in our Pcb Power Services is 0.15mm.

Your design has drill-drill distance of 0.08mm.



Example errors in white - Not all errors are shown - CHECK your complete design

Suggested solution :

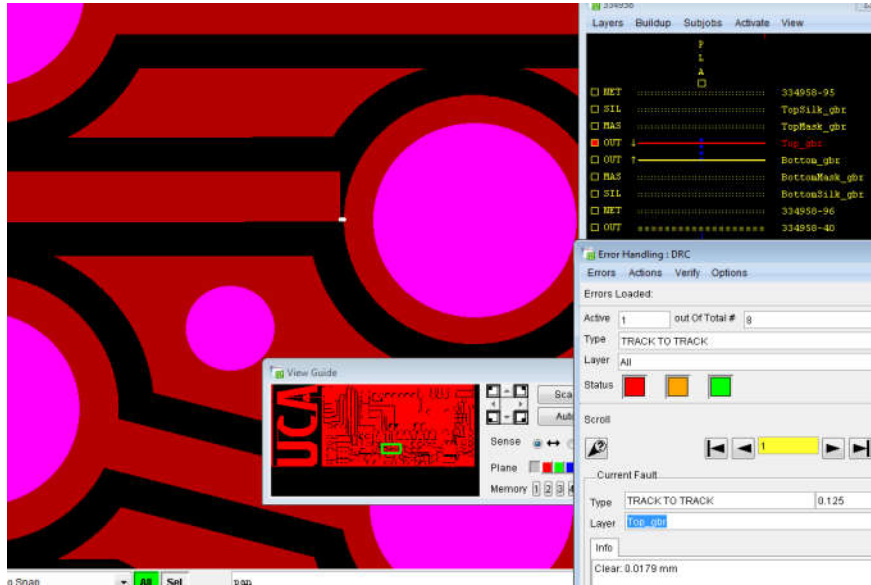
We request you to make changes accordingly. Refer last page for our capability.

Exception: 3

Minimum TT-TP-PP-TW in our Pcb Power service is 0.125mm.

Your design has TT-TP-PP-TW of 0.0179mm.

Total 01 TT-TP-PP-TW errors found which are <0.15mm.



Example errors in white - Not all errors are shown - CHECK your complete design

Suggested solution :

Can we continue the order by making short where PAD TO TRACK error found?