



Data Sync

Plug-in Version 1.1

WinTAK Version 4.8

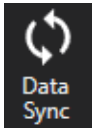
14 December 2022



Data Sync

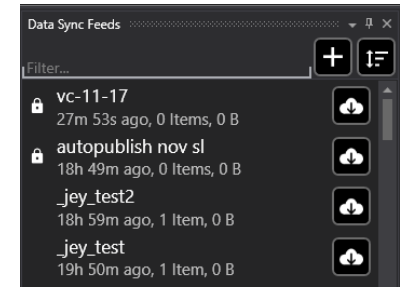
Overview	3
Feed List	3
Creating a Feed	3
Feed Details	4
Adding to a Feed	5
Adding to a Feed (Continued)	6
Updating Items Within a Feed	7
Downloading a Feed	7
Timeline View	8
Timeline View (Continued)	9
Deleting a Feed	9
Data Sync Preferences	9

Overview



The Data Synchronization (Sync) Plug-in synchronizes TAK devices involved in a singular event via the TAK Server which stores information for a mission/feed in a server-side database.

Select the **[Data Sync]** icon to view feeds on the TAK Server. Filter the list by searching by name or hashtag, sort the list by feed status, modified time, name or unread items.



Creating a Feed

Select **[New Feed]** on the WinTAK toolbar or select **[+]** on the feed list to create a new feed. Feed parameters that can be configured on a new feed include:

Name – Identifies the feed.

Server – Identifies the TAK Server to be utilized.

Group – TAK Servers that support user groups can be configured to appear for a specific user group.

Default Roles – Automatically assigned to users who join the feed.

- **Read-Only** users can access and review feed content, are unable to add/modify/delete.
- **Subscribers** can add/modify/delete feed content and can invite other users to the feed.
- **Owners** can perform Subscriber actions in addition to manually assigning user roles, modifying feed settings, and deleting the feed from the server when it is no longer needed.

Password - Restricts feed access by requiring a password when attempting to join. Passwords may be bypassed by inviting individuals to the feed.

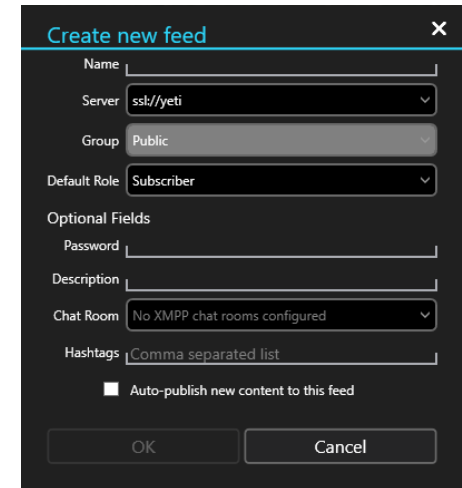
Description - Additional informational text that appears beside the feed name.

Chatroom - An XMPP conference room can be added to the feed if the TAK Chat plug-in is installed. This chatroom can be accessed from the Feed Dashboard.

Hashtags - The tag(s) that will be assigned to the feed and the individual map items that it contains. These tags can be searched for and categorized so that it is easier to determine which items belong with which feed.

Auto-Publish – Checking this box will automatically publish map items to the feed. This only applies to the local device that enables it.

When all parameters are configured, select **[OK]** to publish the Data Sync Feed to the server.



Feed Details

Sync Status, Feed Name and Feed Description will be displayed at the top of the feed details dock pane. Also displayed at the top of the feed details dock pane are buttons for the tools that are fundamental for using Data Sync.

Add To Feed – Add files, images, map items, user logs and video aliases.

Export – Export a feed invitation, feed log or a data package. Exports are located in: Documents\WinTAK\Export directory.

Filter – Search via name or hashtag.

Sort – Sort categories by name (alphabetically) or modified time (most recent).



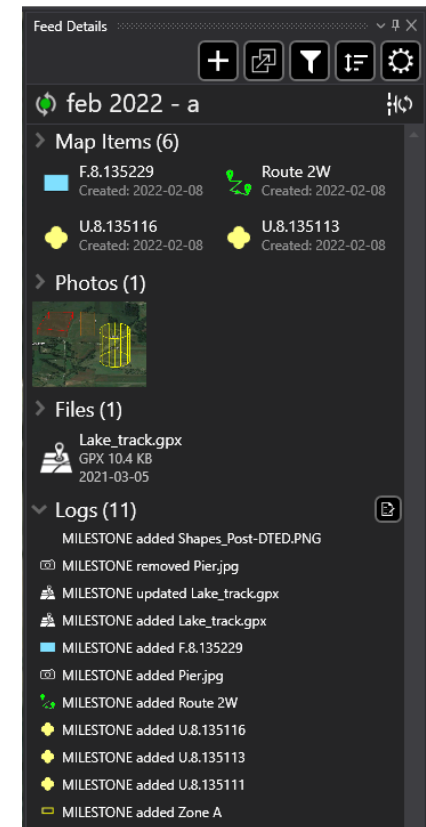
The Feed Settings dialog box is a dark-themed window with a title bar that says "Feed Settings" and a close button (X). It contains several input fields and controls:

- Name:** A text field containing "nov test 2020".
- Server:** A text field containing "ssl/" with a small icon to its right.
- Default Role:** A dropdown menu currently set to "Owner".
- Optional Fields:**
 - Password:** An empty text field.
 - Description:** A text field containing "WinTAK".
 - Chat Room:** A dropdown menu currently set to "No XMPP chat rooms configured".
 - Hashtags:** A text field containing "#NovWinTAK".
- Checkboxes:** Two checkboxes are located at the bottom left: "Auto-publish new content to this feed" (unchecked) and "Subscribe to feed changes" (checked).
- Buttons:** Two buttons, "OK" and "Cancel", are at the bottom of the dialog.

Feed Settings – Feed Settings allows users with an Owner role status to change the feed's Default Role, Password, Description, Chat Room and Hashtags. All roles can unsubscribe from feed changes, view current active feed members and their roles and invite others to the feed. The option to "Auto-publish new content to this feed" can be enabled from here. This option allows the automatic adding of new map items to the feed.

Sync Feed – Redownloads all items within the feed. If an item exceeds the Large File Prompt setting or is older than the Sync Threshold setting a download icon will appear in place of the item. Select the icon to manually download the item.

Timeline – Transitions the feed from the Dashboard view to the Timeline view.



Adding to a Feed

Items added to a feed are organized by type, Map Items, Photos or Files and placed into the appropriate category. If a Data Sync compatible plug-in is installed, such as ExCheck or Reports, new sections are added to the feed details when items from those plug-ins are added to the feed. Selecting the drop-down arrow beside a category will reveal all the individual items within that category. Otherwise, only the first four items in each category will be visible based on the current sorting method.

Items added while connected to the TAK Server will become immediately available to other users in the feed who have an active TAK Server connection. Items that are added while offline will be automatically added to the feed the next time the user connects to the TAK Server.

To add items to a feed, first select the feed from the feed list, then from feed details select **[Add to Feed]**.

Choose from the following selection methods:

File Select – Select individual files with File Explorer. Select **[Open]** to add the selected items to the feed.

Images – Selected a photo with File Explorer.

Lasso – A group of items can be selected from the map by drawing a lasso around them. Once the items have been selected, individual items not needed can be deselected and the remaining items can be added to the feed.

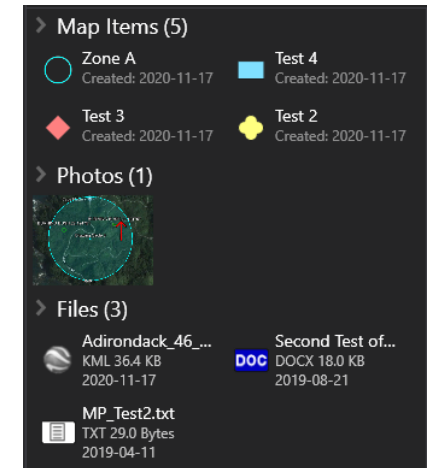
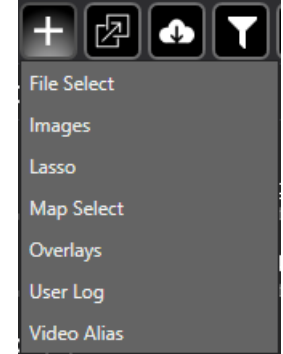
Map Select – Individual items on the map can be selected/deselected by clicking on them. Select **[Save]** to add the chosen items to the feed or the **[X]** beside an item to remove it from the list of items to add.

Overlays – Select individual items/categories from the Overlay Manager.

User Log – Opens the **[Create User Log]** window where the following fields can be updated: Entry field, DTG Hashtags, Map Items or Attachments. Select **[OK]** to add the user log and associated items to the feed.

Video Alias – Videos Aliases that have been added to the WinTAK Video Player appear here. They can be individually selected and then added to the feed by selecting **[OK]**.

Additional selection methods will become available if Data Sync compatible plug-ins are installed, such as ExCheck.



Adding to a Feed (Continued)

Items that can be added to a Data Sync feed include:

Map Items – These are items created by Drawing Tools, Routes, Range & Bearing, Point Dropper and CASEVAC

Photos - JPG and PNG images

Mobile Files - SQLite, XML and MB Tiles

Imagery Files - GeoTiff, GRG-TIFF, GRG-KMZ, KMZ w/Imagery, JPEG2000, MrSid and NTIF

Overlay Files - DRW, GPX, KML, LPT and Shape

Right-clicking an item in the feed will reveal additional options that can be accessed. These options include:

History – Specific to map items only, this option displays every instance the item was updated and the timestamp when it occurred. Entries in the history can be selected to revert the item to that moment in time.

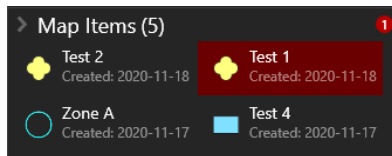
Set Hashtags –Add, update or remove hashtags that are associated with the item

Delete - Delete an item from the feed locally or server-wide

As items are added, edited and removed from the feed the changes will be logged in the feed change log.

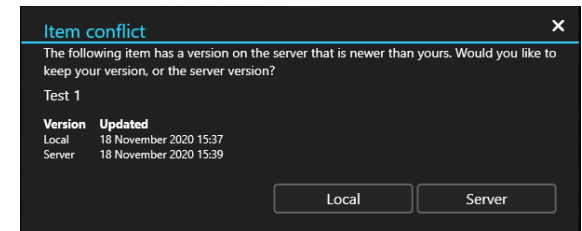
Updating Items Within a Feed

Updating an item within a feed will result in a prompt to publish the changes to the feed. Changes published while online will update immediately for other currently subscribed users who are also online. Offline users will be notified of the changes the next time they come online. If any changes are published while offline, they will be automatically uploaded to the feed the next time the user comes online.



Any items in a feed that have been changed will be highlighted in red, in the feed change log and indicated as such in the individual feed categories.

If the same item was changed by an offline user and an online user, a deconfliction window will appear for the offline user the next time they come online. The offline user can choose which version of the item will be kept. Changes can be reverted at any time by accessing the item's history.



Downloading a Feed

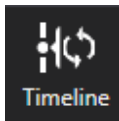
Selecting a feed entry will show the feed name, description, creator of the feed, creation date, number of items and size of the feed. To download a feed, select the [**Download**] icon and choose either:

- **Download and Stay Synced** - Grants access to the feed, downloads its contents and receives updates to the feed and its contents as they occur.
- **Download Once** - Grants access to the feed and downloads its contents, no updates that are made to the feed or its contents will be received.
- **Cancel** – Closes feed window and returns to feed list.

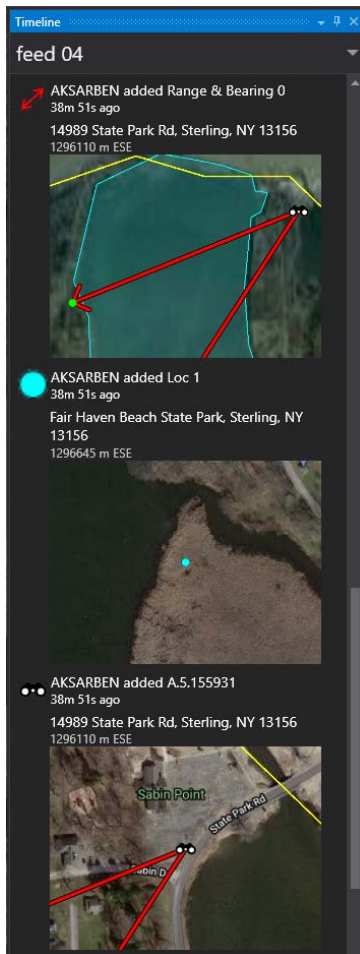
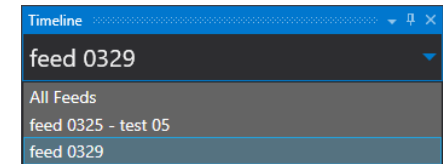
After a feed has been downloaded, it will appear at the top of the feed list. A downloaded feed can have three different statuses, indicated by the color that appears beside the sync icon.

- **Grey** – The feed downloaded will not check for updates. This can also occur if the user decides to unsubscribe from feed changes at a later point.
- **Green** – The feed is downloaded and up to date with changes made to the feed registering.
- **Red** – The feed is downloaded and accessible, but the user is currently offline. Either the TAK Server is currently disconnected or the device doesn't have a data connection. In this instance the user can still interact with the feed and the items it contains but won't be able to publish or receive updates until they reconnect.

Timeline View



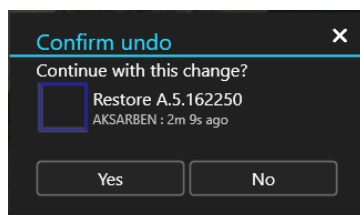
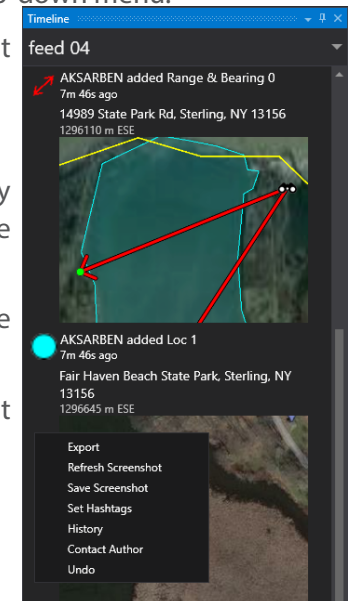
Timeline view offers a different perspective for viewing Data Sync feeds and the items they contain. Select the [Timeline] icon from WinTAK toolbar or Feed Details. Choose an individual feed, or all feeds currently subscribed to by using the drop-down at the top of the Timeline.



The Timeline view captures screenshots of individual items that are added to Data Sync feeds that the user is currently subscribed to. If changes are made to any of the items in a feed an updated screenshot will appear in the timeline. Screenshots of map items will usually include: the callsign of the user that added/updated the item, a timestamp of when the item was added/updated, the item's name, address/location, distance/direction from the local device's self-marker, and a screenshot of the item on the map. Selecting a screenshot will pan the map to the location of the item. The entries for other item types, such as images and files, will appear without the location information and instead of a screenshot will have an image preview or a description of the file.

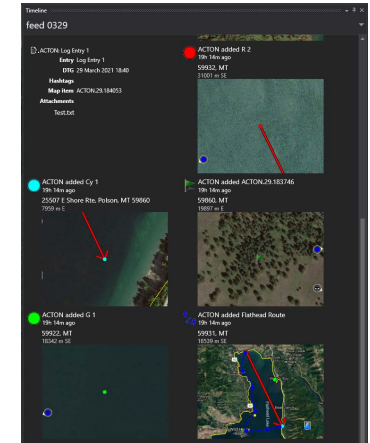
Each timeline entry also has a list of additional options that can be accessed by right clicking the item, similar to what is available in the Feed Details view.

- **Export** – Saves a copy of the item and places it in the Documents\WinTAK\Export directory.
- **Refresh screenshot** – Refreshes the screenshot image in the timeline. Additionally, all screenshots in the Timeline can be refreshed by selecting the [Refresh Screenshots] option present in the dock pane drop-down menu.
- **Save screenshot** – Saves a copy of the screenshot image in the Documents\WinTAK\Export directory.
- **Set Hashtags** – Add, update or remove hashtags that are associated with the item.
- **History** - This option is specific to map items only. This option allows the user to see every instance that the item was updated and the timestamp when it occurred. Select one of the entries in the History to revert the item to that moment in time.
- **Contact Author** – Displays details for the user that last updated or added the item to the feed.
- **Undo** – Reverts a change that was made to an item. This option can also restore items that have been deleted.



Timeline View (Continued)

The timeline panel can also be expanded by clicking and dragging the left side of the panel. This will display the timeline in a gallery format.



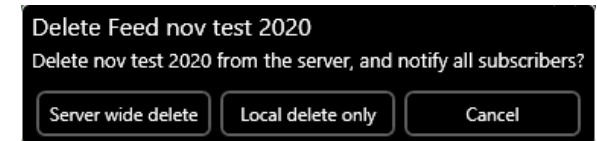
Deleting a Feed

Locate the downloaded feed on the feed list and select [**Delete**]. Three choices are presented depending on the role assigned:

[**Cancel**] - Cancels the deletion process leaving the feed in the state that it was before.

[**Local Delete Only**] - Removes the user from the feed and deletes the feed content on the local device.

[**Server Wide Delete**] – Only Owner roles have this option which removes the feed and its contents from the server. When a feed is deleted from the server, anyone currently subscribed to the feed will be asked if they would like to keep its contents locally.



Data Sync Preferences

Data Sync Preferences are found in WinTAK Settings under Tool Preferences. Several preferences are available to make managing feeds, feed updates and user activity easier.

