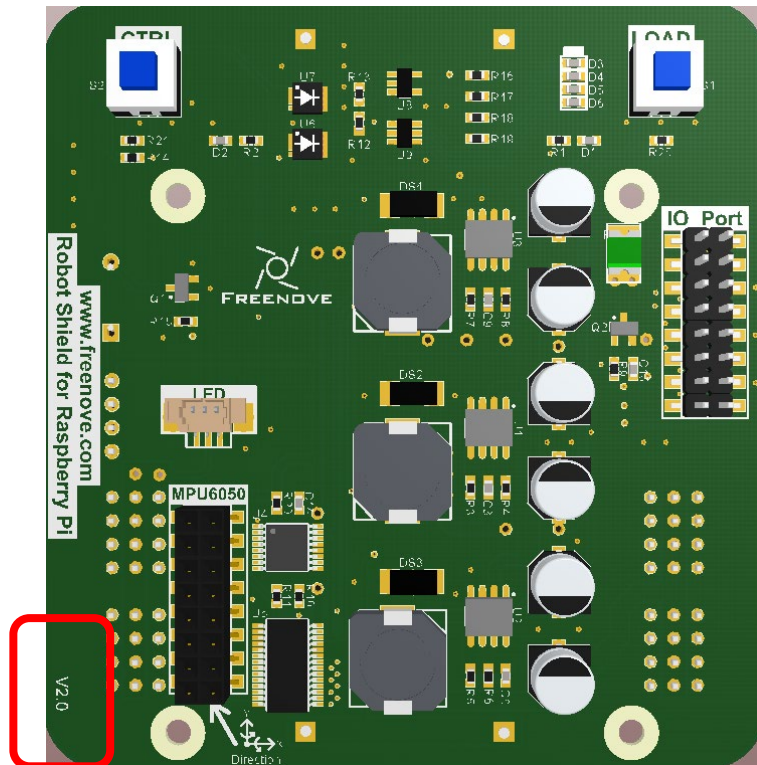


For various versions of Robot Shield for Raspberry Pi, it requires different modification. Please check the version of your Robot Shield for Raspberry Pi.



If the version is 2.0 or later, you do not need to make any modification.

If it is v1.0 – v1.9, please modify the ADS7830.py.

Change **battery\_voltage=data[4]/255.0\*5.0\*2** to **battery\_voltage=data[4]/255.0\*5.0\*3**, as shown below.

```

10 self.ADS7830_CMD = 0x84 # Single-Ended Inputs
11 def readAdc(self,channel):
12     """Select the Command data from the given provided value above"""
13     COMMAND_SET = self.ADS7830_CMD | (((channel<<2)|(channel>>1))&0x07)<<4)
14     self.bus.write_byte(self.ADS7830_DEFAULT_ADDRESS, COMMAND_SET)
15     data = self.bus.read_byte(self.ADS7830_DEFAULT_ADDRESS)
16     return data
17 def power(self,channel):
18     data=[' ',' ',' ',' ',' ',' ',' ',' ',' ']
19     for i in range(9):
20         data[i]=self.readAdc(channel)
21     data.sort()
22     battery_voltage=data[4]/255.0*5.0*3
23     return battery_voltage
24 if __name__ == '__main__':
25     a=ADS7830()
26     print(a.power(0))
27

```

Save the change.

ADS7830.py is under the directory Freenove\_Robot\_Dog\_Kit\_for\_Raspberry\_Pi\Code\Server.

