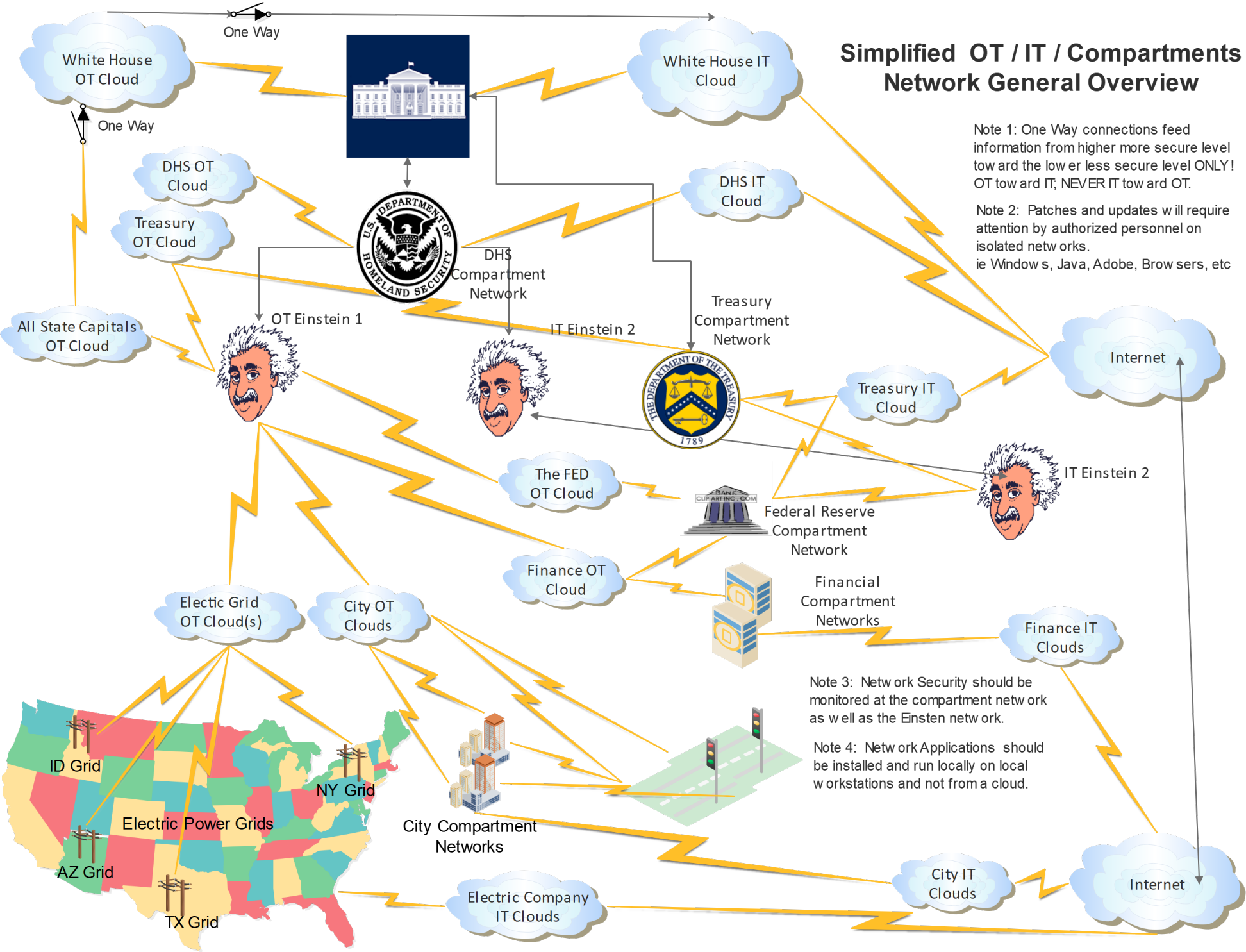


Simplified OT / IT / Compartments Network General Overview



Note 1: One Way connections feed information from higher more secure level toward the lower less secure level ONLY! OT toward IT; NEVER IT toward OT.

Note 2: Patches and updates will require attention by authorized personnel on isolated networks. ie Windows, Java, Adobe, Browsers, etc

Note 3: Network Security should be monitored at the compartment network as well as the Einstein network.

Note 4: Network Applications should be installed and run locally on local workstations and not from a cloud.