



Performance



Accessibility



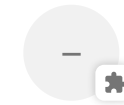
Best Practices



SEO



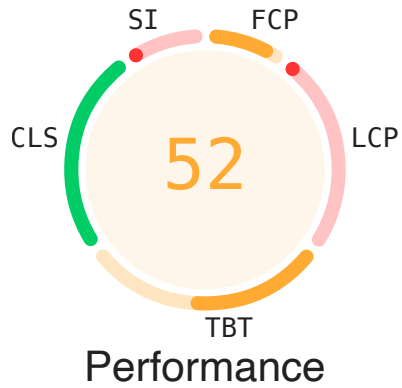
PWA



Publisher Ads

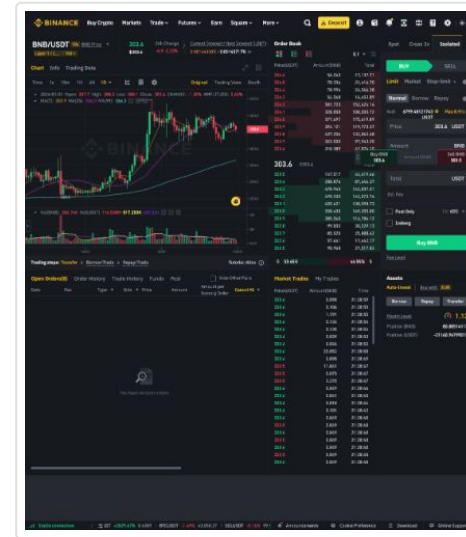
There were issues affecting this run of Lighthouse:

- No ads were requested when fetching this page.
- No ads were rendered when rendering this page.
- The GPT tag was not requested.
- No ads were rendered when rendering this page.
- There may be stored data affecting loading performance in this location: IndexedDB. Audit this page in an incognito window to prevent those resources from affecting your scores.
- The page loaded too slowly to finish within the time limit. Results may be incomplete.



Values are estimated and may vary. The [performance score is calculated](#) directly from these metrics. [See calculator.](#)

▲ 0–49 ■ 50–89 ● 90–100



METRICS

[Expand view](#)

■ First Contentful Paint
1.0 s

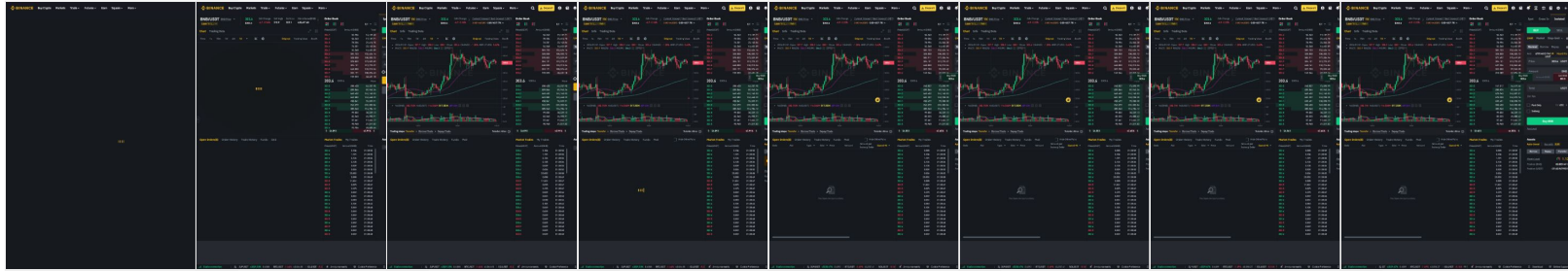
■ Total Blocking Time
310 ms

▲ Speed Index
4.0 s

▲ Largest Contentful Paint
20.5 s

● Cumulative Layout Shift
0.004

[View Treemap](#)



Show audits relevant to: **All** FCP LCP TBT CLS

DIAGNOSTICS

▲ Reduce JavaScript execution time — 5.0 s

Consider reducing the time spent parsing, compiling, and executing JS. You may find delivering smaller JS payloads helps with this. [Learn how to reduce Javascript execution time.](#) TBT

Show 3rd-party resources (9)

URL	Total CPU Time	Script Evaluation	Script Parse
bnbstatic.com	4,995 ms	4,234 ms	91 ms
...runtime/main-8a78af6...js (bin.bnbstatic.com)	3,678 ms	3,164 ms	33 ms
...react/react.production.16.14.0.js (bin.bnbstatic.com)	534 ms	494 ms	0 ms
...7.38.0/bundle.es5.min.js (bin.bnbstatic.com)	395 ms	286 ms	1 ms
...common-widget/fetch-ponyfill.js (bin.bnbstatic.com)	96 ms	88 ms	0 ms
...chunks/bnc~pl~1.f4b61321.js (bin.bnbstatic.com)	91 ms	79 ms	6 ms
...fiat-activation-ui/fiat-activation-widget.ad29390.js (bin.bnbstatic.com)	81 ms	60 ms	20 ms
...chunks/common2.ab8f0fe6.js (bin.bnbstatic.com)	69 ms	12 ms	28 ms

URL	Total CPU Time	Script Evaluation	Script Parse
...chunks/page-5f8e.5b374b30.js (bin.bnbstatic.com)	52 ms	50 ms	2 ms
binance.com 1st Party	1,416 ms	405 ms	13 ms
...trade/BNB_USDT?type=isolated (www.binance.com)	1,416 ms	405 ms	13 ms
Unattributable	612 ms	43 ms	0 ms
Unattributable	612 ms	43 ms	0 ms
Wistia Video	263 ms	238 ms	8 ms
...external/E-v1.js (fast.wistia.com)	263 ms	238 ms	8 ms

▲ Minimize main-thread work — 7.5 s ^

Consider reducing the time spent parsing, compiling and executing JS. You may find delivering smaller JS payloads helps with this. [Learn how to minimize main-thread work](#) TBT

Category	Time Spent
Script Evaluation	5,095 ms
Other	1,354 ms
Style & Layout	517 ms
Garbage Collection	220 ms
Rendering	164 ms
Script Parsing & Compilation	161 ms

Category

Time Spent

Parse HTML & CSS

27 ms

▲ Reduce the impact of third-party code — **Third-party code blocked the main thread for 480 ms** ^


Third-party code can significantly impact load performance. Limit the number of redundant third-party providers and try to load third-party code after your page has primarily finished loading. [Learn how to minimize third-party impact.](#) TBT

Third-Party	Transfer Size	Main-Thread Blocking Time
bnbstatic.com	3,135 KiB	483 ms
...runtime/main-8a78af6...js (bin.bnbstatic.com)	617 KiB	481 ms
...fiat-activation-ui/fiat-activation-widjet.ad29390.js (bin.bnbstatic.com)	398 KiB	1 ms
...chunks/page-5f8e.5b374b30.js (bin.bnbstatic.com)	36 KiB	0 ms
...chunks/common2.ab8f0fe6.js (bin.bnbstatic.com)	588 KiB	0 ms
Other resources	1,497 KiB	0 ms
nftstatic.com	7,894 KiB	0 ms
...res/b796cb4....png (public.nftstatic.com)	7,894 KiB	0 ms
Wistia Video	130 KiB	0 ms
...external/E-v1.js (fast.wistia.com)	127 KiB	0 ms
Optanon Consent-Provider	10 KiB	0 ms
/scripttemplates/otSDKStub.js (cdn.cookieclaw.org)	7 KiB	0 ms
Google Tag Manager Tag-Manager	4 KiB	0 ms
Google Analytics Analytics	4 KiB	0 ms
saasexch.com	1 KiB	0 ms

Third-Party	Transfer Size	Main-Thread Blocking Time
Sentry Utility	0 KiB	0 ms
bntrace.com	0 KiB	0 ms

▲ Reduce unused JavaScript — Potential savings of 1,805 KiB ^

Reduce unused JavaScript and defer loading scripts until they are required to decrease bytes consumed by network activity. [Learn how to reduce unused JavaScript.](#) LCP

 If you are not server-side rendering, [split your JavaScript bundles](#) with React's `lazy()`. Otherwise, code-split using a third-party library such as [loadable-components](#).

URL	Transfer Size	Potential Savings
bnbstatic.com	2,449.4 KiB	1,712.7 KiB
...runtime/main-8a78af6...js (bin.bnbstatic.com)	617.3 KiB	413.6 KiB
...chunks/common2.ab8f0fe6.js (bin.bnbstatic.com)	588.1 KiB	386.3 KiB
...fiat-activation-ui/fiat-activation-widget.ad29390.js (bin.bnbstatic.com)	397.7 KiB	285.0 KiB
...common-widget/vendor@1.3.141.min.js (public.bnbstatic.com)	140.9 KiB	102.6 KiB
...common-widget/uuid@9.0.0.js (bin.bnbstatic.com)	141.7 KiB	100.8 KiB
...chunks/bnc~pl~1.f4b61321.js (bin.bnbstatic.com)	122.2 KiB	87.0 KiB
...chunks/bnc~2.4b826493.js (bin.bnbstatic.com)	76.1 KiB	69.7 KiB
...chunks/3978.28a7f339.js (bin.bnbstatic.com)	49.0 KiB	45.3 KiB

URL	Transfer Size	Potential Savings
...chunks/ba7db96d.a23f12f6.js (bin.bnbstatic.com)	43.8 KiB	43.7 KiB
...chunks/b5caba61.7c9a554d.js (bin.bnbstatic.com)	39.0 KiB	34.7 KiB
...http/http@1.15.78.js (public.bnbstatic.com)	60.8 KiB	34.6 KiB
...track/track@0.1.97.js (public.bnbstatic.com)	47.3 KiB	31.7 KiB
...themis/themis@0.0.30.js (public.bnbstatic.com)	46.8 KiB	27.3 KiB
...common-widget/common@1.3.141.min.js (public.bnbstatic.com)	33.8 KiB	26.8 KiB
...sensors/sensorsdata@1.23.2.js (bin.bnbstatic.com)	44.9 KiB	23.7 KiB
Wistia Video	126.9 KiB	92.7 KiB
...external/E-v1.js (fast.wistia.com)	126.9 KiB	92.7 KiB
.../src/embeds/media/modules/_public_api.coffee	11.3 KiB	9.8 KiB
.../src/embeds/wistiaPlayer/WistiaPlayer.ts	6.3 KiB	5.0 KiB
.../src/embeds/media/players/vulcanV2Player/behaviors/UIBehavior.js	5.4 KiB	4.8 KiB
.../src/embeds/media/players/vulcanV2Player/index.js	5.0 KiB	4.2 KiB
.../src/embeds/media/modules/_player.js	4.7 KiB	3.8 KiB

▲ Avoid an excessive DOM size — 3,420 elements ^

A large DOM will increase memory usage, cause longer [style calculations](#), and produce costly [layout reflows](#). [Learn how to avoid an excessive DOM size.](#) TBT

Consider using a "windowing" library like `react-window` to minimize the number of DOM nodes created if you are rendering many repeated elements on the page. [Learn more](#). Also, minimize unnecessary re-renders using



[shouldComponentUpdate](#), [PureComponent](#), or [React.memo](#) and [skip effects](#) only until certain dependencies have changed if you are using the Effect hook to improve runtime performance.

Statistic	Element	Value
Total DOM Elements		3,420
Maximum DOM Depth	 <pre>div.bn-input-suffix > div.css-13c2b5p > svg.css-rrv9q1 > path <path d="M16.5 8.49v2.25L12 15.51l-4.5-4.77V8.49h9z" fill="currentColor"></pre>	29
Maximum Child Elements	<pre>body > svg <svg aria-name="com" xmlns="http://www.w3.org/2000/svg" style="position: absolute; width: 0px; height: 0px; overflow: hidden;" aria-hidden="true"></pre>	117

▲ Preconnect to required origins — Potential savings of 110 ms ^

Consider adding preconnect or dns-prefetch resource hints to establish early connections to important third-party origins. [Learn how to preconnect to required origins.](#) FCP LCP

URL	Potential Savings
Wistia Video	110 ms
https://fast.wistia.com	110 ms
nftstatic.com	90 ms
https://public.nftstatic.com	90 ms

Minify CSS — Potential savings of 5 KiB

Minifying CSS files can reduce network payload sizes. [Learn how to minify CSS.](#) FCP LCP



If your build system minifies CSS files automatically, ensure that you are deploying the production build of your application. You can check this with the React Developer Tools extension. [Learn more.](#)

Show 3rd-party resources (1)

URL	Transfer Size	Potential Savings
bnbstatic.com	16.9 KiB	3.0 KiB
...css/650f8f82.css (bin.bnbstatic.com)	16.9 KiB	3.0 KiB
Unattributable	18.1 KiB	2.1 KiB
.css-1f2l6zj { box-sizing: border-box; margin: 0px; min-width: 0px; width: 100%; height: 100%; ... } ...	18.1 KiB	2.1 KiB

Minify JavaScript — Potential savings of 24 KiB

Minifying JavaScript files can reduce payload sizes and script parse time. [Learn how to minify JavaScript.](#) FCP LCP



If your build system minifies JS files automatically, ensure that you are deploying the production build of your application. You can check this with the React Developer Tools extension. [Learn more.](#)

Show 3rd-party resources (4)

URL	Transfer Size	Potential Savings
bnbstatic.com	62.0 KiB	12.9 KiB

URL	Transfer Size	Potential Savings
...global/index.js (bin.bnbstatic.com)	42.0 KiB	9.8 KiB
...global/common.js (bin.bnbstatic.com)	20.0 KiB	3.0 KiB
Unattributable	9.8 KiB	6.7 KiB
chrome-extension://ibeemfhcbbikonfajhamlkdgedmekifo/content.js	9.8 KiB	6.7 KiB
Google Tag Manager Tag-Manager	3.6 KiB	2.1 KiB
/gtm.js?id=GTM-M86QHGF (www.googletagmanager.com)	3.6 KiB	2.1 KiB
Google Analytics Analytics	3.6 KiB	2.1 KiB
/analytics.js (www.google-analytics.com)	3.6 KiB	2.1 KiB

■ Enable text compression — Potential savings of 5 KiB

Text-based resources should be served with compression (gzip, deflate or brotli) to minimize total network bytes.

[Learn more about text compression.](#) FCP LCP

URL	Transfer Size	Potential Savings
Google Tag Manager Tag-Manager	3.6 KiB	2.3 KiB
/gtm.js?id=GTM-M86QHGF (www.googletagmanager.com)	3.6 KiB	2.3 KiB
Google Analytics Analytics	3.6 KiB	2.3 KiB
/analytics.js (www.google-analytics.com)	3.6 KiB	2.3 KiB

■ Serve static assets with an efficient cache policy — 28 resources found



A long cache lifetime can speed up repeat visits to your page. [Learn more about efficient cache policies.](#)

URL	Cache TTL	Transfer Size
nftstatic.com		7,894 KiB
...res/b796cb4....png (public.nftstatic.com)	None	7,894 KiB
bnbstatic.com		877 KiB
...common-widget/tslib.js (bin.bnbstatic.com)	None	4 KiB
...common-widget/md5.min.js (bin.bnbstatic.com)	None	3 KiB
...common-widget/b2a@1.1.2.js (bin.bnbstatic.com)	None	1 KiB
...common-widget/vendor@1.3.141.min.js (public.bnbstatic.com)	1d	141 KiB
...http/http@1.15.78.js (public.bnbstatic.com)	1d	61 KiB
...track/track@0.1.97.js (public.bnbstatic.com)	1d	47 KiB
...themis/themis@0.0.30.js (public.bnbstatic.com)	1d	47 KiB
...common-widget/common@1.3.141.min.js (public.bnbstatic.com)	1d	34 KiB
...common-widget/header@1.3.141.min.js (public.bnbstatic.com)	1d	26 KiB
...common-widget/data@1.3.141.min.js (public.bnbstatic.com)	1d	22 KiB
...common-widget/utils@1.3.141.min.js (public.bnbstatic.com)	1d	9 KiB
...common-widget/styles@1.3.141.css (public.bnbstatic.com)	1d	9 KiB
...common-widget/extension@1.3.141.min.js (public.bnbstatic.com)	1d	5 KiB

URL	Cache TTL	Transfer Size
...common-widget/uuid@9.0.0.js (bin.bnbstatic.com)	7d	142 KiB
...bp/BinancePI...woff2 (bin.bnbstatic.com)	7d	64 KiB
...bp/BinancePlex-Medium.woff2 (bin.bnbstatic.com)	7d	64 KiB
...bp/BinancePI...woff2 (bin.bnbstatic.com)	7d	60 KiB
...global/index.js (bin.bnbstatic.com)	7d	42 KiB
...newbase/common-icon.js (bin.bnbstatic.com)	7d	29 KiB
...newbase/com-icon.js (bin.bnbstatic.com)	7d	21 KiB
...7.38.0/bundle.es5.min.js (bin.bnbstatic.com)	7d	21 KiB
...global/common.js (bin.bnbstatic.com)	7d	20 KiB
...common-widget/fetch-ponyfill.js (bin.bnbstatic.com)	7d	4 KiB
Wistia Video		127 KiB
...external/E-v1.js (fast.wistia.com)	1h	127 KiB
Optanon Consent-Provider		7 KiB
/scripttemplates/otSDKStub.js (cdn.cookie law.org)	1d	7 KiB
Google Analytics Analytics		4 KiB
/analytics.js (www.google-analytics.com)	None	4 KiB
Google Tag Manager Tag-Manager		4 KiB
/gtm.js?id=GTM-M86QHGF (www.googletagmanager.com)	None	4 KiB

Does not use passive listeners to improve scrolling performance

Consider marking your touch and wheel event listeners as passive to improve your page's scroll performance. [Learn more about adopting passive event listeners.](#)

Source
bnbstatic.com
...7.38.0/bundle.es5.min.js:2:57648 (bin.bnbstatic.com)

Eliminate render-blocking resources — Potential savings of 0 ms

Resources are blocking the first paint of your page. Consider delivering critical JS/CSS inline and deferring all non-critical JS/styles. [Learn how to eliminate render-blocking resources.](#) FCP LCP

URL	Transfer Size	Potential Savings
bnbstatic.com	4.7 KiB	210 ms
...css/029f4e03.css (bin.bnbstatic.com)	4.7 KiB	210 ms

Reduce unused CSS — Potential savings of 16 KiB

Reduce unused rules from stylesheets and defer CSS not used for above-the-fold content to decrease bytes consumed by network activity. [Learn how to reduce unused CSS.](#) FCP LCP

URL	Transfer Size	Potential Savings
bnbstatic.com	16.9 KiB	16.2 KiB

URL	Transfer Size	Potential Savings
...css/650f8f82.css (bin.bnbstatic.com)	16.9 KiB	16.2 KiB

■ Avoid serving legacy JavaScript to modern browsers — Potential savings of 43 KiB ^

Polyfills and transforms enable legacy browsers to use new JavaScript features. However, many aren't necessary for modern browsers. For your bundled JavaScript, adopt a modern script deployment strategy using module/nomodule feature detection to reduce the amount of code shipped to modern browsers, while retaining support for legacy browsers. [Learn how to use modern JavaScript](#) TBT

URL	Potential Savings
bnbstatic.com	43.0 KiB
...http/http@1.15.78.js (public.bnbstatic.com)	8.3 KiB
...http/http@1.15.78.js:2:3905 (public.bnbstatic.com)	@babel/plugin-transform-classes
...http/http@1.15.78.js:2:106255 (public.bnbstatic.com)	Object.keys
...track/track@0.1.97.js (public.bnbstatic.com)	8.0 KiB
...track/track@0.1.97.js:2:3819 (public.bnbstatic.com)	@babel/plugin-transform-classes
...track/track@0.1.97.js:2:71223 (public.bnbstatic.com)	Object.keys
...common-widget/uuid@9.0.0.js (bin.bnbstatic.com)	7.7 KiB
...common-widget/uuid@9.0.0.js:2:28229 (bin.bnbstatic.com)	@babel/plugin-transform-classes
...common-widget/uuid@9.0.0.js:2:372664 (bin.bnbstatic.com)	Object.keys

URL	Potential Savings
...themis/themis@0.0.30.js (public.bnbstatic.com)	7.5 KiB
...themis/themis@0.0.30.js:2:3937 (public.bnbstatic.com)	@babel/plugin-transform-classes
...themis/themis@0.0.30.js:2:100772 (public.bnbstatic.com)	Object.keys
...chunks/common2.ab8f0fe6.js (bin.bnbstatic.com)	6.4 KiB
...chunks/common2.ab8f0fe6.js:3:921920 (bin.bnbstatic.com)	@babel/plugin-transform-classes
...chunks/common2.ab8f0fe6.js:3:1929476 (bin.bnbstatic.com)	Object.keys
...runtime/main-8a78af6....js (bin.bnbstatic.com)	4.9 KiB
...runtime/main-8a78af6....js:3:257089 (bin.bnbstatic.com)	@babel/plugin-transform-classes
...runtime/main-8a78af6....js:3:2879005 (bin.bnbstatic.com)	Array.isArray
...chunks/page-5f8e.5b374b30.js (bin.bnbstatic.com)	0.1 KiB
...chunks/page-5f8e.5b374b30.js:3:64441 (bin.bnbstatic.com)	@babel/plugin-transform-classes
...fiat-activation-ui/fiat-activation-widget.ad29390.js (bin.bnbstatic.com)	0.1 KiB
...fiat-activation-ui/fiat-activation-widget.ad29390.js:1:361458 (bin.bnbstatic.com)	@babel/plugin-transform-classes
...common-widget/utils@1.3.141.min.js (public.bnbstatic.com)	0.0 KiB
...common-widget/utils@1.3.141.min.js:2:3745 (public.bnbstatic.com)	@babel/plugin-transform-classes
...chunks/bnc~2.4b826493.js (bin.bnbstatic.com)	0.0 KiB

URL	Potential Savings
...chunks/bnc~2.4b826493.js:3:282365 (bin.bnbstatic.com)	@babel/plugin-transform-classes
...common-widget/common@1.3.141.min.js (public.bnbstatic.com)	0.0 KiB
...common-widget/common@1.3.141.min.js:2:249803 (public.bnbstatic.com)	@babel/plugin-transform-classes
Wistia Video	0.2 KiB
...external/E-v1.js (fast.wistia.com)	0.2 KiB
webpack:///./src/embeds/shared/CustomEventsWrapper.jsx:7:32	@babel/plugin-transform-classes

■ Page prevented back/forward cache restoration — 2 failure reasons ^

Many navigations are performed by going back to a previous page, or forwards again. The back/forward cache (bfcache) can speed up these return navigations. [Learn more about the bfcache](#)

Failure reason	Failure type
The page has an unload handler in the main frame. ...trade/BNB_USDT?type=isolated (www.binance.com)	Actionable
Pages with WebSocket cannot enter back/forward cache. ...trade/BNB_USDT?type=isolated (www.binance.com)	Pending browser support

■ Avoid enormous network payloads — Total size was 11,664 KiB ^

Large network payloads cost users real money and are highly correlated with long load times. [Learn how to reduce payload sizes.](#) LCP

Show 3rd-party resources (9)

URL	Transfer Size
nftstatic.com	7,894.2 KiB
...res/b796cb4....png (public.nftstatic.com)	7,894.2 KiB
bnbstatic.com	2,084.0 KiB
...runtime/main-8a78af6....js (bin.bnbstatic.com)	617.3 KiB
...chunks/common2.ab8f0fe6.js (bin.bnbstatic.com)	588.1 KiB
...fiat-activation-ui/fiat-activation-widget.ad29390.js (bin.bnbstatic.com)	397.7 KiB
...common-widget/uuid@9.0.0.js (bin.bnbstatic.com)	141.7 KiB
...common-widget/vendor@1.3.141.min.js (public.bnbstatic.com)	140.9 KiB
...chunks/bnc~pl~1.f4b61321.js (bin.bnbstatic.com)	122.2 KiB
...chunks/bnc~2.4b826493.js (bin.bnbstatic.com)	76.1 KiB
Wistia Video	126.9 KiB
...external/E-v1.js (fast.wistia.com)	126.9 KiB
binance.com 1st Party	74.0 KiB
...product/get-products?includeEtf=true (www.binance.com)	74.0 KiB

Avoid long main-thread tasks — 14 long tasks found




Lists the longest tasks on the main thread, useful for identifying worst contributors to input delay. [Learn how to avoid long main-thread tasks](#) TBT

URL	Start Time	Duration
bnbstatic.com		1,186 ms
...runtime/main-8a78af6...js (bin.bnbstatic.com)	8,157 ms	171 ms
...chunks/a29ae703.7127635b.js (bin.bnbstatic.com)	6,392 ms	160 ms
...runtime/main-8a78af6...js (bin.bnbstatic.com)	6,954 ms	111 ms
...runtime/main-8a78af6...js (bin.bnbstatic.com)	8,485 ms	94 ms
...runtime/main-8a78af6...js (bin.bnbstatic.com)	7,387 ms	87 ms
...runtime/main-8a78af6...js (bin.bnbstatic.com)	7,474 ms	85 ms
...runtime/main-8a78af6...js (bin.bnbstatic.com)	8,597 ms	77 ms
...runtime/main-8a78af6...js (bin.bnbstatic.com)	6,560 ms	65 ms
...runtime/main-8a78af6...js (bin.bnbstatic.com)	6,746 ms	64 ms
...runtime/main-8a78af6...js (bin.bnbstatic.com)	6,853 ms	58 ms
...runtime/main-8a78af6...js (bin.bnbstatic.com)	7,071 ms	55 ms
...runtime/main-8a78af6...js (bin.bnbstatic.com)	7,205 ms	54 ms
...react/react.production.16.14.0.js (bin.bnbstatic.com)	6,625 ms	53 ms
...chunks/page-5f8e.5b374b30.js (bin.bnbstatic.com)	3,046 ms	52 ms

○ Initial server response time was short — Root document took 380 ms



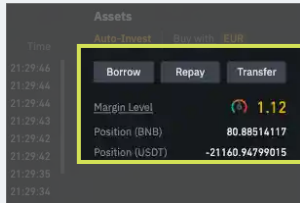
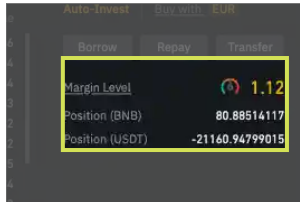
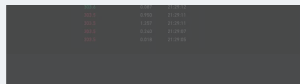
Keep the server response time for the main document short because all other requests depend on it. [Learn more about the Time to First Byte metric.](#) FCP LCP

If you are server-side rendering any React components, consider using `renderToPipeableStream()` or  `renderToStaticNodeStream()` to allow the client to receive and hydrate different parts of the markup instead of all at once. [Learn more.](#)

URL	Time Spent
binance.com 1st Party	380 ms
...trade/BNB_USDT?type=isolated (www.binance.com)	380 ms

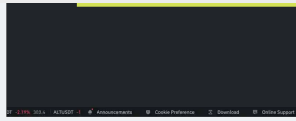
Avoid large layout shifts — 5 elements found ^

These DOM elements contribute most to the CLS of the page. [Learn how to improve CLS](#) CLS

Element	CLS Contribution
 <p>Borrow Repay Transfer Margin Level 1.12 Position (BNB) 80.88514117 Position (US... <code><div class="css-1f7dyko"></code></p>	0.001
 <p>Margin Level 1.12 Position (BNB) 80.88514117 Position (USDT) -21160.94799015 <code><div class="css-11cb88r"></code></p>	0.001
 <p>Announcements Cookie Preference Download Online Support <code><div class="css-4cffwv"></code></p>	0.001

Element

CLS
Contribution



303.4 171.948 52,169.02 303.3 425.606 129,086.30 303.2 459.936 139,452.60

303.1...

```
<div class="orderbook-list-container" style="position:
relative; height: 236px; width: 303px; overflow: auto;">
```

0.000

Grid

```
<div class="tradeItemSwitchWrap css-1dcivma" data-id="gridTab">
```

0.000

○ User Timing marks and measures — 4 user timings

Consider instrumenting your app with the User Timing API to measure your app's real-world performance during key user experiences. [Learn more about User Timing marks.](#)



Use the React DevTools Profiler, which makes use of the Profiler API, to measure the rendering performance of your components. [Learn more.](#)

Name	Type	Start Time	Duration
get-cache-i18n	Measure	949.45 ms	228.02 ms
get-cache-i18n-start	Mark	949.45 ms	
get-cache-i18n-end	Mark	1,177.47 ms	
player_init_start	Mark	2,493.47 ms	

○ Avoid chaining critical requests — 27 chains found



The Critical Request Chains below show you what resources are loaded with a high priority. Consider reducing the length of chains, reducing the download size of resources, or deferring the download of unnecessary resources to improve page load. [Learn how to avoid chaining critical requests.](#) FCP LCP

Maximum critical path latency: **630.4 ms**

Initial Navigation



...	...common-widget/extension@1.3.141.min.js (public.bnbstatic.com) - 57.614 ms, 4.83 KiB
...	...7.38.0/bundle.es5.min.js (bin.bnbstatic.com) - 29.604 ms, 20.85 KiB
...	...runtime/webpack-c56f973...js (bin.bnbstatic.com) - 30.445 ms, 4.44 KiB
...	...chunks/framework.eab20b89.js (bin.bnbstatic.com) - 33.252 ms, 7.87 KiB
...	...chunks/common2.ab8f0fe6.js (bin.bnbstatic.com) - 50.44 ms, 588.12 KiB
...	...chunks/a29ae703.7127635b.js (bin.bnbstatic.com) - 41.469 ms, 19.15 KiB
...	...chunks/b5caba61.7c9a554d.js (bin.bnbstatic.com) - 44.05 ms, 38.96 KiB
...	...runtime/main-8a78af6...js (bin.bnbstatic.com) - 121.034 ms, 617.33 KiB

More information about the performance of your application. These numbers don't [directly affect](#) the Performance score.

PASSED AUDITS (18)

Hide

<p>● Properly size images ^</p> <p>Serve images that are appropriately-sized to save cellular data and improve load time. Learn how to size images.</p>
<p>● Defer offscreen images ^</p> <p>Consider lazy-loading offscreen and hidden images after all critical resources have finished loading to lower time to interactive. Learn how to defer offscreen images.</p>
<p>● Efficiently encode images ^</p> <p>Optimized images load faster and consume less cellular data. Learn how to efficiently encode images.</p>

● Serve images in next-gen formats ^

Warnings: Unable to locate resource ...res/b796cb4....png

Image formats like WebP and AVIF often provide better compression than PNG or JPEG, which means faster downloads and less data consumption. [Learn more about modern image formats.](#)

● Avoid multiple page redirects ^

Redirects introduce additional delays before the page can be loaded. [Learn how to avoid page redirects.](#) FCP LCP

 If you are using React Router, minimize usage of the `<Redirect>` component for [route navigations](#).

○ Preload key requests ^

Consider using `<link rel=preload>` to prioritize fetching resources that are currently requested later in page load. [Learn how to preload key requests.](#) FCP LCP

● Use HTTP/2 ^

HTTP/2 offers many benefits over HTTP/1.1, including binary headers and multiplexing. [Learn more about HTTP/2.](#)

● Use video formats for animated content ^

Large GIFs are inefficient for delivering animated content. Consider using MPEG4/WebM videos for animations and PNG/WebP for static images instead of GIF to save network bytes. [Learn more about efficient video formats](#) LCP

Remove duplicate modules in JavaScript bundles ^

Remove large, duplicate JavaScript modules from bundles to reduce unnecessary bytes consumed by network activity. TBT

Preload Largest Contentful Paint image ^

If the LCP element is dynamically added to the page, you should preload the image in order to improve LCP. [Learn more about preloading LCP elements.](#) LCP

All text remains visible during webfont loads ^

Leverage the `font-display` CSS feature to ensure text is user-visible while webfonts are loading. [Learn more about font-display.](#) FCP LCP

Lazy load third-party resources with facades ^

Some third-party embeds can be lazy loaded. Consider replacing them with a facade until they are required. [Learn how to defer third-parties with a facade.](#) TBT

Largest Contentful Paint element ^

This is the largest contentful element painted within the viewport. [Learn more about the Largest Contentful Paint element](#) LCP

Largest Contentful Paint image was not lazily loaded ^

Above-the-fold images that are lazily loaded render later in the page lifecycle, which can delay the largest contentful paint. [Learn more about optimal lazy loading](#). LCP

Avoids `document.write()` ^

For users on slow connections, external scripts dynamically injected via `document.write()` can delay page load by tens of seconds. [Learn how to avoid document.write\(\)](#).

Avoid non-composited animations ^

Animations which are not composited can be janky and increase CLS. [Learn how to avoid non-composited animations](#) CLS

Image elements have explicit `width` and `height` ^

Set an explicit width and height on image elements to reduce layout shifts and improve CLS. [Learn how to set image dimensions](#) CLS

Has a `<meta name="viewport">` tag with `width` or `initial-scale` ^

A `<meta name="viewport">` not only optimizes your app for mobile screen sizes, but also prevents [a 300 millisecond delay to user input](#). [Learn more about using the viewport meta tag](#). TBT



Accessibility

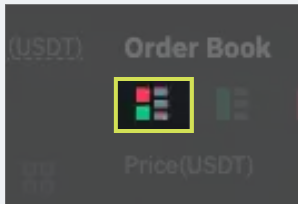
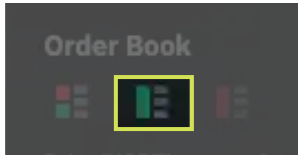
These checks highlight opportunities to [improve the accessibility of your web app](#). Automatic detection can only detect a subset of issues and does not guarantee the accessibility of your web app, so [manual testing](#) is also encouraged.

NAMES AND LABELS

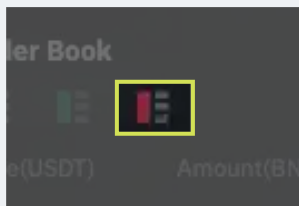
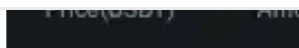
▲ Buttons do not have an accessible name

When a button doesn't have an accessible name, screen readers announce it as "button", making it unusable for users who rely on screen readers. [Learn how to make buttons more accessible.](#)

Failing Elements

	<pre>div#spotOrderbook > div.orderbook-header > div.orderbook-header-tips > button.css-sz6ky9 <button data-bn-type="button" data-testid="defaultModeButton" class=" css- sz6ky9"></pre>
	<pre>div#spotOrderbook > div.orderbook-header > div.orderbook-header-tips > button.css-1meiumy <button data-bn-type="button" data-testid="buyModeButton" class=" css- 1meiumy"></pre>

Failing Elements

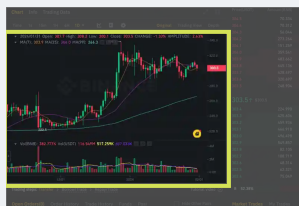


```
div#spotOrderbook > div.orderbook-header > div.orderbook-header-tips > button.css-1meiumy  
<button data-bn-type="button" data-testid="sellModeButton" class=" css-1meiumy">
```

▲ <frame> or <iframe> elements do not have a title ^

Screen reader users rely on frame titles to describe the contents of frames. [Learn more about frame titles.](#)

Failing Elements

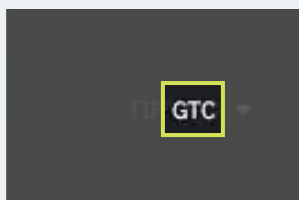


```
div.focus-area > div.kline-wrap > div.kline-container > iframe  
<iframe style="position: absolute; left: 0px; top: 0px; width: 100%; height: 100%;">
```

▲ Form elements do not have associated labels ^

Labels ensure that form controls are announced properly by assistive technologies, like screen readers. [Learn more about form element labels.](#)

Failing Elements



```
div.tif > div.css-1sp3obq > div.css-b0330l > input.bn-sdd-input  
<input data-bn-type="input" class="bn-sdd-input css-1es5582" value="GTC">
```

Failing Elements

▲ Links do not have a discernible name

Link text (and alternate text for images, when used as links) that is discernible, unique, and focusable improves the navigation experience for screen reader users. [Learn how to make links accessible.](#)

Failing Elements

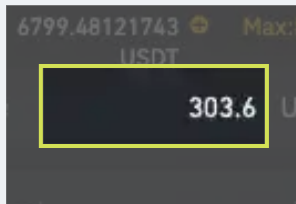


```
div.theme-root > header.header-container > div.header-leftside > a.logo-link  
<a class="logo-link" href="https://www.binance.com/en">
```

○ No form fields have multiple labels

Form fields with multiple labels can be confusingly announced by assistive technologies like screen readers which use either the first, the last, or all of the labels. [Learn how to use form labels.](#)

Failing Elements



```
div.css-vurnku > div.price > div.css-17sjuxz > input#FormRow-BUY-price  
<input data-bn-type="input" lang="en" id="FormRow-BUY-price" name="price"  
class=" css-1wlt96c" min="0.1" step="0.1" type="number" value="303.6">
```



Price

```
<label data-bn-type="text" for="FormRow-BUY-price" class="css-wqgyt0">
```

Failing Elements



USDT

```
<label data-bn-type="text" for="FormRow-BUY-price" class="css-1p59llx">
```

These are opportunities to improve the semantics of the controls in your application. This may enhance the experience for users of assistive technology, like a screen reader.

BEST PRACTICES

▲ `[user-scalable="no"]` is used in the `<meta name="viewport">` element or the `[maximum-scale]` attribute is less than 5. ^

Disabling zooming is problematic for users with low vision who rely on screen magnification to properly see the contents of a web page. [Learn more about the viewport meta tag.](#)

Failing Elements

```
head > meta
<meta name="viewport" content="user-scalable=no,width=device-width,initial-scale=1.0,maximum-scale=1.0,mi...">
```

```
head > meta
<meta name="viewport" content="width=device-width,minimum-scale=1,maximum-scale=1.0,initial-scale=1,user-..." data-shuvi-head="true">
```

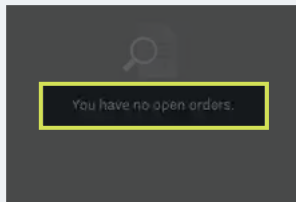
These items highlight common accessibility best practices.

CONTRAST

▲ Background and foreground colors do not have a sufficient contrast ratio. ^

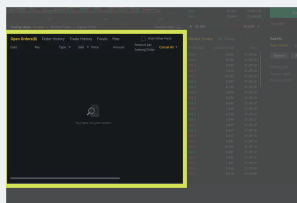
Low-contrast text is difficult or impossible for many users to read. [Learn how to provide sufficient color contrast.](#)

Failing Elements



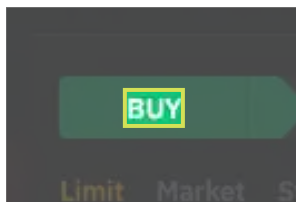
You have no open orders.

```
<div data-bn-type="text" class="css-j0mvbd">
```



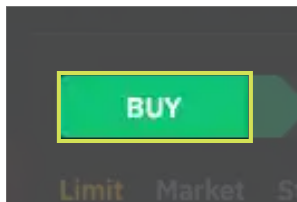
Open Orders(0) Order History Trade History Funds Positions(9) Hide Other Pairs ...

```
<div name="userinfo" class="css-1pxph15">
```



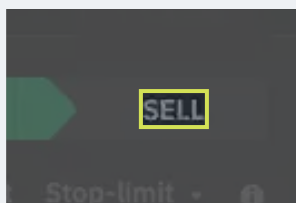
BUY

```
<div data-bn-type="text" class="css-1eclt39">
```



BUY

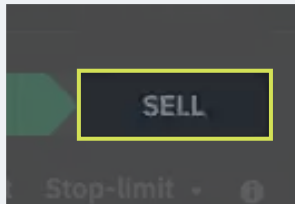
```
<div data-bn-type="text" data-testid="BuyTab" class="css-vjzu20">
```



SELL

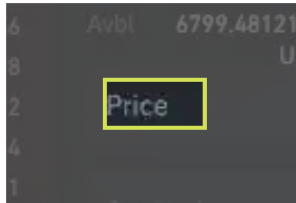
```
<div data-bn-type="text" class="css-b2gwzx">
```

Failing Elements



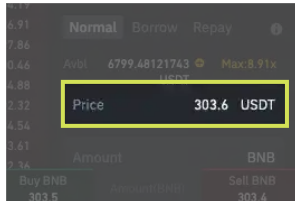
SELL

```
<div data-bn-type="text" data-testid="SellTab" class="css-1jy3glt">
```



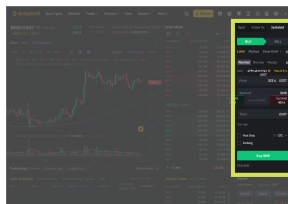
Price

```
<label data-bn-type="text" for="FormRow-BUY-price" class="css-wqgyt0">
```



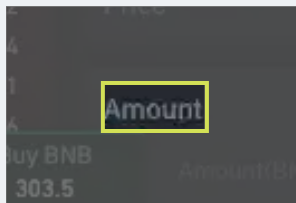
Price USDT

```
<div class="price css-771gt4">
```



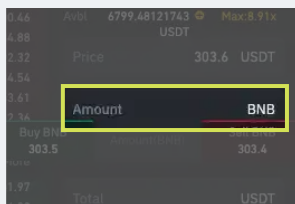
Spot Cross 3x Isolated Grid BUY SELL Limit Market Stop-limit Normal Borrow Repa...

```
<div name="orderform" class="css-10jy9jn">
```



Amount

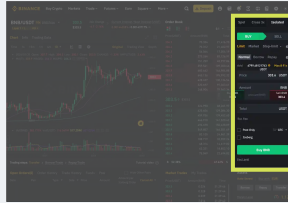
```
<label data-bn-type="text" for="FormRow-BUY-quantity" class="css-wqgyt0">
```



Amount BNB

```
<div class="quantity css-771gt4">
```

Failing Elements



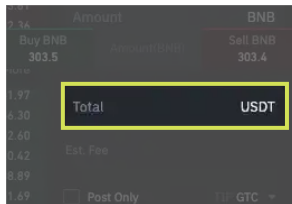
Spot Cross 3x Isolated Grid BUY SELL Limit Market Stop-limit Normal Borrow Repa...

`<div name="orderform" class="css-10jy9jn">`



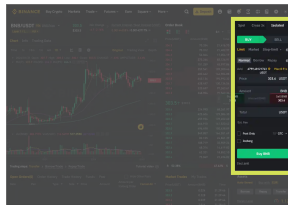
Total

`<label data-bn-type="text" for="FormRow-BUY-total" class="css-wqgyt0">`



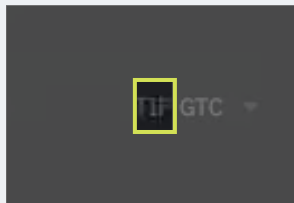
Total USDT

`<div class="total css-771gt4">`



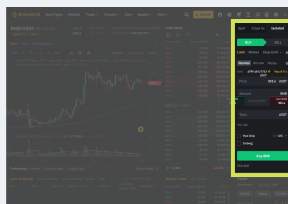
Spot Cross 3x Isolated Grid BUY SELL Limit Market Stop-limit Normal Borrow Repa...

`<div name="orderform" class="css-10jy9jn">`



TIF

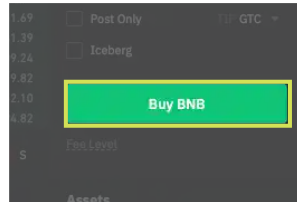
`<div data-bn-type="text" class="css-ust4ag">`



Spot Cross 3x Isolated Grid BUY SELL Limit Market Stop-limit Normal Borrow Repa...

`<div name="orderform" class="css-10jy9jn">`

Failing Elements



Buy BNB

```
<button data-bn-type="button" class="css-1qka0vb" data-sensors-click="true" id="orderformBuyBtn" data-testid="button-spot-buy" style="cursor: pointer;">
```

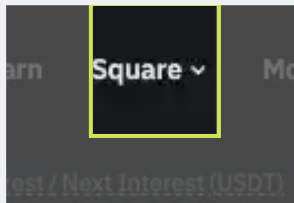
These are opportunities to improve the legibility of your content.

NAVIGATION

▲ [id] attributes on active, focusable elements are not unique

All focusable elements must have a unique `id` to ensure that they're visible to assistive technologies. [Learn how to fix duplicate ids.](#)

Failing Elements



Square

```
<a class="header-menu-item_view typography-Subtitle4" id="ba-Square" href="https://www.binance.com/en/feed">
```

SquareStay informed with everything crypto

```
<a class="header-nav-subitem" href="https://www.binance.com/en/feed" target="_self" id="ba-Square">
```

These are opportunities to improve keyboard navigation in your application.

ADDITIONAL ITEMS TO MANUALLY CHECK (10)

Hide

Interactive controls are keyboard focusable ^

Custom interactive controls are keyboard focusable and display a focus indicator. [Learn how to make custom controls focusable.](#)

Interactive elements indicate their purpose and state ^

Interactive elements, such as links and buttons, should indicate their state and be distinguishable from non-interactive elements. [Learn how to decorate interactive elements with affordance hints.](#)

The page has a logical tab order ^

Tabbing through the page follows the visual layout. Users cannot focus elements that are offscreen. [Learn more about logical tab ordering.](#)

Visual order on the page follows DOM order ^

DOM order matches the visual order, improving navigation for assistive technology. [Learn more about DOM and visual ordering.](#)

User focus is not accidentally trapped in a region ^

A user can tab into and out of any control or region without accidentally trapping their focus. [Learn how to avoid focus traps.](#)

The user's focus is directed to new content added to the page ^

If new content, such as a dialog, is added to the page, the user's focus is directed to it. [Learn how to direct focus to new content.](#)

<input type="radio"/> HTML5 landmark elements are used to improve navigation ^
<p>Landmark elements (<main>, <nav>, etc.) are used to improve the keyboard navigation of the page for assistive technology. Learn more about landmark elements.</p>
<input type="radio"/> Offscreen content is hidden from assistive technology ^
<p>Offscreen content is hidden with display: none or aria-hidden=true. Learn how to properly hide offscreen content.</p>
<input type="radio"/> Custom controls have associated labels ^
<p>Custom interactive controls have associated labels, provided by aria-label or aria-labelledby. Learn more about custom controls and labels.</p>
<input type="radio"/> Custom controls have ARIA roles ^
<p>Custom interactive controls have appropriate ARIA roles. Learn how to add roles to custom controls.</p>

These items address areas which an automated testing tool cannot cover. Learn more in our guide on [conducting an accessibility review.](#)

PASSED AUDITS (9)

Hide

<input checked="" type="radio"/> <code>[aria-hidden="true"]</code> is not present on the document <code><body></code> ^
<p>Assistive technologies, like screen readers, work inconsistently when <code>aria-hidden="true"</code> is set on the document <code><body></code>. Learn how <code>aria-hidden</code> affects the document body.</p>
<input checked="" type="radio"/> <code>[aria-hidden="true"]</code> elements do not contain focusable descendents ^

Focusable descendents within an `[aria-hidden="true"]` element prevent those interactive elements from being available to users of assistive technologies like screen readers. [Learn how aria-hidden affects focusable elements.](#)

● Document has a `<title>` element ^

The title gives screen reader users an overview of the page, and search engine users rely on it heavily to determine if a page is relevant to their search. [Learn more about document titles.](#)

● `<html>` element has a `[lang]` attribute ^

If a page doesn't specify a `lang` attribute, a screen reader assumes that the page is in the default language that the user chose when setting up the screen reader. If the page isn't actually in the default language, then the screen reader might not announce the page's text correctly. [Learn more about the `lang` attribute.](#)

● `<html>` element has a valid value for its `[lang]` attribute ^

Specifying a valid [BCP 47 language](#) helps screen readers announce text properly. [Learn how to use the `lang` attribute.](#)

● No element has a `[tabindex]` value greater than 0 ^

A value greater than 0 implies an explicit navigation ordering. Although technically valid, this often creates frustrating experiences for users who rely on assistive technologies. [Learn more about the `tabindex` attribute.](#)

● `[lang]` attributes have a valid value ^

Specifying a valid [BCP 47 language](#) on elements helps ensure that text is pronounced correctly by a screen reader. [Learn how to use the lang attribute.](#)

Heading elements appear in a sequentially-descending order ^

Properly ordered headings that do not skip levels convey the semantic structure of the page, making it easier to navigate and understand when using assistive technologies. [Learn more about heading order.](#)

Values assigned to `role=""` are valid ARIA roles. ^

ARIA roles enable assistive technologies to know the role of each element on the web page. If the role values are misspelled, not existing ARIA role values, or abstract roles, then the purpose of the element will not be communicated to users of assistive technologies. [Learn more about ARIA roles.](#)

NOT APPLICABLE (42)

Hide

`[accesskey]` values are unique ^

Access keys let users quickly focus a part of the page. For proper navigation, each access key must be unique. [Learn more about access keys.](#)

`[aria-*)` attributes match their roles ^

Each ARIA role supports a specific subset of `aria-*)` attributes. Mismatching these invalidates the `aria-*)` attributes. [Learn how to match ARIA attributes to their roles.](#)

`button`, `link`, and `menuitem` elements have accessible names ^

When an element doesn't have an accessible name, screen readers announce it with a generic name, making it unusable for users who rely on screen readers. [Learn how to make command elements more accessible.](#)

Elements with `role="dialog"` or `role="alertdialog"` have accessible names. ^

ARIA dialog elements without accessible names may prevent screen readers users from discerning the purpose of these elements. [Learn how to make ARIA dialog elements more accessible.](#)

ARIA input fields have accessible names ^

When an input field doesn't have an accessible name, screen readers announce it with a generic name, making it unusable for users who rely on screen readers. [Learn more about input field labels.](#)

ARIA `meter` elements have accessible names ^

When a meter element doesn't have an accessible name, screen readers announce it with a generic name, making it unusable for users who rely on screen readers. [Learn how to name meter elements.](#)

ARIA `progressbar` elements have accessible names ^


When a progressbar element doesn't have an accessible name, screen readers announce it with a generic name, making it unusable for users who rely on screen readers. [Learn how to label progressbar elements.](#)

`[role]`s have all required `[aria-*`] attributes ^

Some ARIA roles have required attributes that describe the state of the element to screen readers. [Learn more about roles and required attributes.](#)

- Elements with an ARIA `[role]` that require children to contain a specific `[role]` have all required children. 

Some ARIA parent roles must contain specific child roles to perform their intended accessibility functions. [Learn more about roles and required children elements.](#)

- `[role]`s are contained by their required parent element 

Some ARIA child roles must be contained by specific parent roles to properly perform their intended accessibility functions. [Learn more about ARIA roles and required parent element.](#)

- `[role]` values are valid 

ARIA roles must have valid values in order to perform their intended accessibility functions. [Learn more about valid ARIA roles.](#)

- Elements with the `role=text` attribute do not have focusable descendents. 

Adding `role=text` around a text node split by markup enables VoiceOver to treat it as one phrase, but the element's focusable descendents will not be announced. [Learn more about the `role=text` attribute.](#)

- ARIA toggle fields have accessible names 

When a toggle field doesn't have an accessible name, screen readers announce it with a generic name, making it unusable for users who rely on screen readers. [Learn more about toggle fields.](#)

- ARIA `tooltip` elements have accessible names 

When a tooltip element doesn't have an accessible name, screen readers announce it with a generic name, making it unusable for users who rely on screen readers. [Learn how to name tooltip elements.](#)

ARIA `treeitem` elements have accessible names ^

When a `treeitem` element doesn't have an accessible name, screen readers announce it with a generic name, making it unusable for users who rely on screen readers. [Learn more about labeling `treeitem` elements.](#)

`[aria-*)` attributes have valid values ^

Assistive technologies, like screen readers, can't interpret ARIA attributes with invalid values. [Learn more about valid values for ARIA attributes.](#)

`[aria-*)` attributes are valid and not misspelled ^

Assistive technologies, like screen readers, can't interpret ARIA attributes with invalid names. [Learn more about valid ARIA attributes.](#)

The page contains a heading, skip link, or landmark region ^

Adding ways to bypass repetitive content lets keyboard users navigate the page more efficiently. [Learn more about bypass blocks.](#)

`<dl>`'s contain only properly-ordered `<dt>` and `<dd>` groups, `<script>`, `<template>` or `<div>` elements. ^

When definition lists are not properly marked up, screen readers may produce confusing or inaccurate output. [Learn how to structure definition lists correctly.](#)

Definition list items are wrapped in `<dl>` elements ^

Definition list items (`<dt>` and `<dd>`) must be wrapped in a parent `<dl>` element to ensure that screen readers can properly announce them. [Learn how to structure definition lists correctly.](#)

○ ARIA IDs are unique ^

The value of an ARIA ID must be unique to prevent other instances from being overlooked by assistive technologies. [Learn how to fix duplicate ARIA IDs.](#)

○ `<html>` element has an `[xml:lang]` attribute with the same base language as the `[lang]` attribute. ^

If the webpage does not specify a consistent language, then the screen reader might not announce the page's text correctly. [Learn more about the lang attribute.](#)

○ Image elements have `[alt]` attributes ^

Informative elements should aim for short, descriptive alternate text. Decorative elements can be ignored with an empty alt attribute. [Learn more about the alt attribute.](#)

○ Image elements do not have `[alt]` attributes that are redundant text. ^

Informative elements should aim for short, descriptive alternative text. Alternative text that is exactly the same as the text adjacent to the link or image is potentially confusing for screen reader users, because the text will be read twice. [Learn more about the alt attribute.](#)

○ Input buttons have discernible text. ^

Adding discernable and accessible text to input buttons may help screen reader users understand the purpose of the input button. [Learn more about input buttons.](#)

○ `<input type="image">` elements have `[alt]` text ^

When an image is being used as an `<input>` button, providing alternative text can help screen reader users understand the purpose of the button. [Learn about input image alt text.](#)

- Links are distinguishable without relying on color. ^

Low-contrast text is difficult or impossible for many users to read. Link text that is discernible improves the experience for users with low vision. [Learn how to make links distinguishable.](#)

- Lists contain only `` elements and script supporting elements (`<script>` and `<template>`). ^

Screen readers have a specific way of announcing lists. Ensuring proper list structure aids screen reader output. [Learn more about proper list structure.](#)

- List items (``) are contained within ``, `` or `<menu>` parent elements ^

Screen readers require list items (``) to be contained within a parent ``, `` or `<menu>` to be announced properly. [Learn more about proper list structure.](#)

- The document does not use `<meta http-equiv="refresh">` ^

Users do not expect a page to refresh automatically, and doing so will move focus back to the top of the page. This may create a frustrating or confusing experience. [Learn more about the refresh meta tag.](#)

- `<object>` elements have alternate text ^

Screen readers cannot translate non-text content. Adding alternate text to `<object>` elements helps screen readers convey meaning to users. [Learn more about alt text for object elements.](#)

- Select elements have associated label elements. ^

Form elements without effective labels can create frustrating experiences for screen reader users. [Learn more about the select element.](#)

- Skip links are focusable. ^

Including a skip link can help users skip to the main content to save time. [Learn more about skip links.](#)

- Tables have different content in the summary attribute and `<caption>`. ^

The summary attribute should describe the table structure, while `<caption>` should have the onscreen title. Accurate table mark-up helps users of screen readers. [Learn more about summary and caption.](#)

- Cells in a `<table>` element that use the `[headers]` attribute refer to table cells within the same table. ^

Screen readers have features to make navigating tables easier. Ensuring `<td>` cells using the `[headers]` attribute only refer to other cells in the same table may improve the experience for screen reader users. [Learn more about the headers attribute.](#)

- `<th>` elements and elements with `[role="columnheader"/"rowheader"]` have data cells they describe. ^

Screen readers have features to make navigating tables easier. Ensuring table headers always refer to some set of cells may improve the experience for screen reader users. [Learn more about table headers.](#)

- `<video>` elements contain a `<track>` element with `[kind="captions"]` ^

When a video provides a caption it is easier for deaf and hearing impaired users to access its information. [Learn more about video captions.](#)

- All heading elements contain content. ^

A heading with no content or inaccessible text prevent screen reader users from accessing information on the page's structure. [Learn more about headings.](#)

- Identical links have the same purpose. ^

Links with the same destination should have the same description, to help users understand the link's purpose and decide whether to follow it. [Learn more about identical links.](#)

- Elements with visible text labels have matching accessible names. ^

Visible text labels that do not match the accessible name can result in a confusing experience for screen reader users. [Learn more about accessible names.](#)

- Tables use `<caption>` instead of cells with the `[colspan]` attribute to indicate a caption. ^

Screen readers have features to make navigating tables easier. Ensuring that tables use the actual caption element instead of cells with the `[colspan]` attribute may improve the experience for screen reader users. [Learn more about captions.](#)

- `<td>` elements in a large `<table>` have one or more table headers. ^

Screen readers have features to make navigating tables easier. Ensuring that `<td>` elements in a large table (3 or more cells in width and height) have an associated table header may improve the experience for screen reader users. [Learn more about table headers.](#)



Best Practices

GENERAL

▲ Uses deprecated APIs — 1 warning found ^

Deprecated APIs will eventually be removed from the browser. [Learn more about deprecated APIs.](#)

Deprecation / Warning	Source
UnloadHandler	...7.38.0/bundle.es5.min.js:2:57648 (bin.bnbstatic.com)

▲ Registers an `unload` listener ^

The `unload` event does not fire reliably and listening for it can prevent browser optimizations like the Back-Forward Cache. Use `pagehide` or `visibilitychange` events instead. [Learn more about unload event listeners](#)

Source
...7.38.0/bundle.es5.min.js:2:44192 (bin.bnbstatic.com)

▲ Browser errors were logged to the console



Errors logged to the console indicate unresolved problems. They can come from network request failures and other browser concerns. [Learn more about this errors in console diagnostic audit](#)

Show 3rd-party resources (177)

Source	Description
bnbstatic.com	
...newbase/common-icon.js:1:95532 (bin.bnbstatic.com)	Error: <path> attribute d: Expected number, "...6.10457 19 5 19L-nan -nanL5 19C3...".
...newbase/common-icon.js:1:95532 (bin.bnbstatic.com)	Error: <path> attribute d: Expected number, "...6.10457 19 5 19L-nan -nanL5 19C3...".
...newbase/common-icon.js:1:95532 (bin.bnbstatic.com)	Error: <path> attribute d: Expected number, "...6.10457 19 5 19L-nan -nanL5 19C3...".
...one-trust/onetrust-trigger.js:1:0 (bin.bnbstatic.com)	Failed to load resource: net::ERR_BLOCKED_BY_CLIENT
binance.com 1st Party	
...trade/BNB_USDT?type=isolated:1:0 (www.binance.com)	Error: <path> attribute d: Expected number, "...6.10457 19 5 19L-nan -nanL5 19C3...".
...trade/BNB_USDT?type=isolated:1:0 (www.binance.com)	Error: <path> attribute d: Expected number, "...6.10457 19 5 19L-nan -nanL5 19C3...".
...trade/BNB_USDT?type=isolated:1:0 (www.binance.com)	Error: <path> attribute d: Expected number, "...6.10457 19 5 19L-nan -nanL5 19C3...".
Optanon Consent-Provider	
...geo/location:1:0 (geolocation.onetrust.com)	Failed to load resource: net::ERR_BLOCKED_BY_CLIENT

Source	Description
...	
202310.2.0/otBannerSdk.js:1:0 (cdn.cookie-law.org)	Failed to load resource: net::ERR_BLOCKED_BY_CLIENT
Sentry Utility	
...5684836/envelope? sentry_key=...:1:0 (o529943.ingest.sentry.io)	Failed to load resource: net::ERR_BLOCKED_BY_CLIENT
...5684836/envelope? sentry_key=...:1:0 (o529943.ingest.sentry.io)	Failed to load resource: net::ERR_BLOCKED_BY_CLIENT
...5684836/envelope? sentry_key=...:1:0 (o529943.ingest.sentry.io)	Failed to load resource: net::ERR_BLOCKED_BY_CLIENT
bntrace.com	
...wm-log/upload:1:0 (log.bntrace.com)	Failed to load resource: net::ERR_BLOCKED_BY_CLIENT
...wm-log/upload:1:0 (log.bntrace.com)	Failed to load resource: net::ERR_BLOCKED_BY_CLIENT
...wm-log/upload:1:0 (log.bntrace.com)	Failed to load resource: net::ERR_BLOCKED_BY_CLIENT
...wm-log/upload:1:0 (log.bntrace.com)	Failed to load resource: net::ERR_BLOCKED_BY_CLIENT
...wm-log/upload:1:0 (log.bntrace.com)	Failed to load resource: net::ERR_BLOCKED_BY_CLIENT
...wm-log/upload:1:0 (log.bntrace.com)	Failed to load resource: net::ERR_BLOCKED_BY_CLIENT
saasexch.com	
...web/batch? project=cc1ljun9gppb8ciciolg:1:0 (api.saasexch.com)	Failed to load resource: net::ERR_BLOCKED_BY_CLIENT

Source

Description

...web/batch?

project=cc1ljun9gpbp8ciciolg:1:0 (api.saasexch.com)

Failed to load resource: net::ERR_BLOCKED_BY_CLIENT

...web/batch?

project=cc1ljun9gpbp8ciciolg:1:0 (api.saasexch.com)

Failed to load resource: net::ERR_BLOCKED_BY_CLIENT

...web/batch?

project=cc1ljun9gpbp8ciciolg:1:0 (api.saasexch.com)

Failed to load resource: net::ERR_BLOCKED_BY_CLIENT

...usd/sa.gif?

project=binance:1:0 (api.saasexch.com)

Failed to load resource: net::ERR_BLOCKED_BY_CLIENT

...usd/sa.gif?

project=binance:1:0 (api.saasexch.com)

Failed to load resource: net::ERR_BLOCKED_BY_CLIENT

...usd/sa.gif?

project=binance:1:0 (api.saasexch.com)

Failed to load resource: net::ERR_BLOCKED_BY_CLIENT

...usd/sa.gif?

project=binance:1:0 (api.saasexch.com)

Failed to load resource: net::ERR_BLOCKED_BY_CLIENT

...usd/sa.gif?

project=binance:1:0 (api.saasexch.com)

Failed to load resource: net::ERR_BLOCKED_BY_CLIENT

...web/batch?

project=cc1ljun9gpbp8ciciolg:1:0 (api.saasexch.com)

Failed to load resource: net::ERR_BLOCKED_BY_CLIENT

...usd/sa.gif?

project=binance:1:0 (api.saasexch.com)

Failed to load resource: net::ERR_BLOCKED_BY_CLIENT

Source	Description
...web/batch? project=cc1ljun9gpbp8ciciolg:1:0 (api.saasexch.com)	Failed to load resource: net::ERR_BLOCKED_BY_CLIENT
...usd/sa.gif? project=binance:1:0 (api.saasexch.com)	Failed to load resource: net::ERR_BLOCKED_BY_CLIENT
...web/batch? project=cc1ljun9gpbp8ciciolg:1:0 (api.saasexch.com)	Failed to load resource: net::ERR_BLOCKED_BY_CLIENT
...usd/sa.gif? project=binance:1:0 (api.saasexch.com)	Failed to load resource: net::ERR_BLOCKED_BY_CLIENT
...web/batch? project=cc1ljun9gpbp8ciciolg:1:0 (api.saasexch.com)	Failed to load resource: net::ERR_BLOCKED_BY_CLIENT
...usd/sa.gif? project=binance:1:0 (api.saasexch.com)	Failed to load resource: net::ERR_BLOCKED_BY_CLIENT
...web/batch? project=cc1ljun9gpbp8ciciolg:1:0 (api.saasexch.com)	Failed to load resource: net::ERR_BLOCKED_BY_CLIENT
...web/batch? project=cc1ljun9gpbp8ciciolg:1:0 (api.saasexch.com)	Failed to load resource: net::ERR_BLOCKED_BY_CLIENT
...web/batch? project=cc1ljun9gpbp8ciciolg:1:0 (api.saasexch.com)	Failed to load resource: net::ERR_BLOCKED_BY_CLIENT
...usd/sa.gif? project=binance:1:0 (api.saasexch.com)	Failed to load resource: net::ERR_BLOCKED_BY_CLIENT

Source	Description
...web/batch? project=cc1ljun9gpbp8ciciolg:1:0 (api.saasexch.com)	Failed to load resource: net::ERR_BLOCKED_BY_CLIENT
...usd/sa.gif? project=binance:1:0 (api.saasexch.com)	Failed to load resource: net::ERR_BLOCKED_BY_CLIENT
...web/batch? project=cc1ljun9gpbp8ciciolg:1:0 (api.saasexch.com)	Failed to load resource: net::ERR_BLOCKED_BY_CLIENT
...usd/sa.gif? project=binance:1:0 (api.saasexch.com)	Failed to load resource: net::ERR_BLOCKED_BY_CLIENT
...web/batch? project=cc1ljun9gpbp8ciciolg:1:0 (api.saasexch.com)	Failed to load resource: net::ERR_BLOCKED_BY_CLIENT
...usd/sa.gif? project=binance:1:0 (api.saasexch.com)	Failed to load resource: net::ERR_BLOCKED_BY_CLIENT
...web/batch? project=cc1ljun9gpbp8ciciolg:1:0 (api.saasexch.com)	Failed to load resource: net::ERR_BLOCKED_BY_CLIENT
...usd/sa.gif? project=binance:1:0 (api.saasexch.com)	Failed to load resource: net::ERR_BLOCKED_BY_CLIENT
...web/batch? project=cc1ljun9gpbp8ciciolg:1:0 (api.saasexch.com)	Failed to load resource: net::ERR_BLOCKED_BY_CLIENT
...usd/sa.gif? project=binance:1:0 (api.saasexch.com)	Failed to load resource: net::ERR_BLOCKED_BY_CLIENT

Source	Description
...web/batch? project=cc1ljun9gpbp8ciciolg:1:0 (api.saasexch.com)	Failed to load resource: net::ERR_BLOCKED_BY_CLIENT
...usd/sa.gif? project=binance:1:0 (api.saasexch.com)	Failed to load resource: net::ERR_BLOCKED_BY_CLIENT
...web/batch? project=cc1ljun9gpbp8ciciolg:1:0 (api.saasexch.com)	Failed to load resource: net::ERR_BLOCKED_BY_CLIENT
...usd/sa.gif? project=binance:1:0 (api.saasexch.com)	Failed to load resource: net::ERR_BLOCKED_BY_CLIENT
...web/batch? project=cc1ljun9gpbp8ciciolg:1:0 (api.saasexch.com)	Failed to load resource: net::ERR_BLOCKED_BY_CLIENT
...usd/sa.gif? project=binance:1:0 (api.saasexch.com)	Failed to load resource: net::ERR_BLOCKED_BY_CLIENT
...web/batch? project=cc1ljun9gpbp8ciciolg:1:0 (api.saasexch.com)	Failed to load resource: net::ERR_BLOCKED_BY_CLIENT
...usd/sa.gif? project=binance:1:0 (api.saasexch.com)	Failed to load resource: net::ERR_BLOCKED_BY_CLIENT
...usd/sa.gif? project=binance:1:0 (api.saasexch.com)	Failed to load resource: net::ERR_BLOCKED_BY_CLIENT
...web/batch? project=cc1ljun9gpbp8ciciolg:1:0 (api.saasexch.com)	Failed to load resource: net::ERR_BLOCKED_BY_CLIENT

Source

Description

...web/batch?

project=cc1ljun9gpbp8ciciolg:1:0 (api.saasexch.com)

Failed to load resource: net::ERR_BLOCKED_BY_CLIENT

...web/batch?

project=cc1ljun9gpbp8ciciolg:1:0 (api.saasexch.com)

Failed to load resource: net::ERR_BLOCKED_BY_CLIENT

...web/batch?

project=cc1ljun9gpbp8ciciolg:1:0 (api.saasexch.com)

Failed to load resource: net::ERR_BLOCKED_BY_CLIENT

...web/batch?

project=cc1ljun9gpbp8ciciolg:1:0 (api.saasexch.com)

Failed to load resource: net::ERR_BLOCKED_BY_CLIENT

...web/batch?

project=cc1ljun9gpbp8ciciolg:1:0 (api.saasexch.com)

Failed to load resource: net::ERR_BLOCKED_BY_CLIENT

...usd/sa.gif?

project=binance:1:0 (api.saasexch.com)

Failed to load resource: net::ERR_BLOCKED_BY_CLIENT

...web/batch?

project=cc1ljun9gpbp8ciciolg:1:0 (api.saasexch.com)

Failed to load resource: net::ERR_BLOCKED_BY_CLIENT

...web/batch?

project=cc1ljun9gpbp8ciciolg:1:0 (api.saasexch.com)

Failed to load resource: net::ERR_BLOCKED_BY_CLIENT

...web/batch?

project=cc1ljun9gpbp8ciciolg:1:0 (api.saasexch.com)

Failed to load resource: net::ERR_BLOCKED_BY_CLIENT

Source	Description
...usd/sa.gif? project=binance:1:0 (api.saasexch.com)	Failed to load resource: net::ERR_BLOCKED_BY_CLIENT
...web/batch? project=cc1ljun9gpbbp8ciciolg:1:0 (api.saasexch.com)	Failed to load resource: net::ERR_BLOCKED_BY_CLIENT
...usd/sa.gif? project=binance:1:0 (api.saasexch.com)	Failed to load resource: net::ERR_BLOCKED_BY_CLIENT
...web/batch? project=cc1ljun9gpbbp8ciciolg:1:0 (api.saasexch.com)	Failed to load resource: net::ERR_BLOCKED_BY_CLIENT
...usd/sa.gif? project=binance:1:0 (api.saasexch.com)	Failed to load resource: net::ERR_BLOCKED_BY_CLIENT
...web/batch? project=cc1ljun9gpbbp8ciciolg:1:0 (api.saasexch.com)	Failed to load resource: net::ERR_BLOCKED_BY_CLIENT
...usd/sa.gif? project=binance:1:0 (api.saasexch.com)	Failed to load resource: net::ERR_BLOCKED_BY_CLIENT
...web/batch? project=cc1ljun9gpbbp8ciciolg:1:0 (api.saasexch.com)	Failed to load resource: net::ERR_BLOCKED_BY_CLIENT
...usd/sa.gif? project=binance:1:0 (api.saasexch.com)	Failed to load resource: net::ERR_BLOCKED_BY_CLIENT
...web/batch? project=cc1ljun9gpbbp8ciciolg:1:0 (api.saasexch.com)	Failed to load resource: net::ERR_BLOCKED_BY_CLIENT

Source	Description
...usd/sa.gif? project=binance:1:0 (api.saasexch.com)	Failed to load resource: net::ERR_BLOCKED_BY_CLIENT
...web/batch? project=cc1ljun9gpbbp8ciciolg:1:0 (api.saasexch.com)	Failed to load resource: net::ERR_BLOCKED_BY_CLIENT
...usd/sa.gif? project=binance:1:0 (api.saasexch.com)	Failed to load resource: net::ERR_BLOCKED_BY_CLIENT
...web/batch? project=cc1ljun9gpbbp8ciciolg:1:0 (api.saasexch.com)	Failed to load resource: net::ERR_BLOCKED_BY_CLIENT
...usd/sa.gif? project=binance:1:0 (api.saasexch.com)	Failed to load resource: net::ERR_BLOCKED_BY_CLIENT
...web/batch? project=cc1ljun9gpbbp8ciciolg:1:0 (api.saasexch.com)	Failed to load resource: net::ERR_BLOCKED_BY_CLIENT
...usd/sa.gif? project=binance:1:0 (api.saasexch.com)	Failed to load resource: net::ERR_BLOCKED_BY_CLIENT
...web/batch? project=cc1ljun9gpbbp8ciciolg:1:0 (api.saasexch.com)	Failed to load resource: net::ERR_BLOCKED_BY_CLIENT
...usd/sa.gif? project=binance:1:0 (api.saasexch.com)	Failed to load resource: net::ERR_BLOCKED_BY_CLIENT
...web/batch? project=cc1ljun9gpbbp8ciciolg:1:0 (api.saasexch.com)	Failed to load resource: net::ERR_BLOCKED_BY_CLIENT

Source	Description
...usd/sa.gif? project=binance:1:0 (api.saasexch.com)	Failed to load resource: net::ERR_BLOCKED_BY_CLIENT
...web/batch? project=cc1ljun9gpbbp8ciciolg:1:0 (api.saasexch.com)	Failed to load resource: net::ERR_BLOCKED_BY_CLIENT
...usd/sa.gif? project=binance:1:0 (api.saasexch.com)	Failed to load resource: net::ERR_BLOCKED_BY_CLIENT
...web/batch? project=cc1ljun9gpbbp8ciciolg:1:0 (api.saasexch.com)	Failed to load resource: net::ERR_BLOCKED_BY_CLIENT
...usd/sa.gif? project=binance:1:0 (api.saasexch.com)	Failed to load resource: net::ERR_BLOCKED_BY_CLIENT
...web/batch? project=cc1ljun9gpbbp8ciciolg:1:0 (api.saasexch.com)	Failed to load resource: net::ERR_BLOCKED_BY_CLIENT
...usd/sa.gif? project=binance:1:0 (api.saasexch.com)	Failed to load resource: net::ERR_BLOCKED_BY_CLIENT
...web/batch? project=cc1ljun9gpbbp8ciciolg:1:0 (api.saasexch.com)	Failed to load resource: net::ERR_BLOCKED_BY_CLIENT
...usd/sa.gif? project=binance:1:0 (api.saasexch.com)	Failed to load resource: net::ERR_BLOCKED_BY_CLIENT
...web/batch? project=cc1ljun9gpbbp8ciciolg:1:0 (api.saasexch.com)	Failed to load resource: net::ERR_BLOCKED_BY_CLIENT

Source	Description
...usd/sa.gif? project=binance:1:0 (api.saasexch.com)	Failed to load resource: net::ERR_BLOCKED_BY_CLIENT
...web/batch? project=cc1ljun9gpbp8ciciolg:1:0 (api.saasexch.com)	Failed to load resource: net::ERR_BLOCKED_BY_CLIENT
...usd/sa.gif? project=binance:1:0 (api.saasexch.com)	Failed to load resource: net::ERR_BLOCKED_BY_CLIENT
...web/batch? project=cc1ljun9gpbp8ciciolg:1:0 (api.saasexch.com)	Failed to load resource: net::ERR_BLOCKED_BY_CLIENT
...usd/sa.gif? project=binance:1:0 (api.saasexch.com)	Failed to load resource: net::ERR_BLOCKED_BY_CLIENT
...web/batch? project=cc1ljun9gpbp8ciciolg:1:0 (api.saasexch.com)	Failed to load resource: net::ERR_BLOCKED_BY_CLIENT
...web/batch? project=cc1ljun9gpbp8ciciolg:1:0 (api.saasexch.com)	Failed to load resource: net::ERR_BLOCKED_BY_CLIENT
...usd/sa.gif? project=binance:1:0 (api.saasexch.com)	Failed to load resource: net::ERR_BLOCKED_BY_CLIENT
...web/batch? project=cc1ljun9gpbp8ciciolg:1:0 (api.saasexch.com)	Failed to load resource: net::ERR_BLOCKED_BY_CLIENT
...web/batch? project=cc1ljun9gpbp8ciciolg:1:0 (api.saasexch.com)	Failed to load resource: net::ERR_BLOCKED_BY_CLIENT

Source

Description

...web/batch?

project=cc1ljun9gpbp8ciciolg:1:0 (api.saasexch.com)

Failed to load resource: net::ERR_BLOCKED_BY_CLIENT

...web/batch?

project=cc1ljun9gpbp8ciciolg:1:0 (api.saasexch.com)

Failed to load resource: net::ERR_BLOCKED_BY_CLIENT

...usd/sa.gif?

project=binance:1:0 (api.saasexch.com)

Failed to load resource: net::ERR_BLOCKED_BY_CLIENT

...web/batch?

project=cc1ljun9gpbp8ciciolg:1:0 (api.saasexch.com)

Failed to load resource: net::ERR_BLOCKED_BY_CLIENT

...web/batch?

project=cc1ljun9gpbp8ciciolg:1:0 (api.saasexch.com)

Failed to load resource: net::ERR_BLOCKED_BY_CLIENT

...web/batch?

project=cc1ljun9gpbp8ciciolg:1:0 (api.saasexch.com)

Failed to load resource: net::ERR_BLOCKED_BY_CLIENT

...web/batch?

project=cc1ljun9gpbp8ciciolg:1:0 (api.saasexch.com)

Failed to load resource: net::ERR_BLOCKED_BY_CLIENT

...usd/sa.gif?

project=binance:1:0 (api.saasexch.com)

Failed to load resource: net::ERR_BLOCKED_BY_CLIENT

...web/batch?

project=cc1ljun9gpbp8ciciolg:1:0 (api.saasexch.com)

Failed to load resource: net::ERR_BLOCKED_BY_CLIENT

Source	Description
...usd/sa.gif? project=binance:1:0 (api.saasexch.com)	Failed to load resource: net::ERR_BLOCKED_BY_CLIENT
...usd/sa.gif? project=binance:1:0 (api.saasexch.com)	Failed to load resource: net::ERR_BLOCKED_BY_CLIENT
...usd/sa.gif? project=binance:1:0 (api.saasexch.com)	Failed to load resource: net::ERR_BLOCKED_BY_CLIENT
...usd/sa.gif? project=binance:1:0 (api.saasexch.com)	Failed to load resource: net::ERR_BLOCKED_BY_CLIENT
...usd/sa.gif? project=binance:1:0 (api.saasexch.com)	Failed to load resource: net::ERR_BLOCKED_BY_CLIENT
...web/batch? project=cc1ljun9gpbp8ciciolg:1:0 (api.saasexch.com)	Failed to load resource: net::ERR_BLOCKED_BY_CLIENT
...usd/sa.gif? project=binance:1:0 (api.saasexch.com)	Failed to load resource: net::ERR_BLOCKED_BY_CLIENT
...web/batch? project=cc1ljun9gpbp8ciciolg:1:0 (api.saasexch.com)	Failed to load resource: net::ERR_BLOCKED_BY_CLIENT
...usd/sa.gif? project=binance:1:0 (api.saasexch.com)	Failed to load resource: net::ERR_BLOCKED_BY_CLIENT
...web/batch? project=cc1ljun9gpbp8ciciolg:1:0 (api.saasexch.com)	Failed to load resource: net::ERR_BLOCKED_BY_CLIENT
...usd/sa.gif? project=binance:1:0 (api.saasexch.com)	Failed to load resource: net::ERR_BLOCKED_BY_CLIENT

Source	Description
...web/batch? project=cc1ljun9gpbp8ciciolg:1:0 (api.saasexch.com)	Failed to load resource: net::ERR_BLOCKED_BY_CLIENT
...web/batch? project=cc1ljun9gpbp8ciciolg:1:0 (api.saasexch.com)	Failed to load resource: net::ERR_BLOCKED_BY_CLIENT
...usd/sa.gif? project=binance:1:0 (api.saasexch.com)	Failed to load resource: net::ERR_BLOCKED_BY_CLIENT
...web/batch? project=cc1ljun9gpbp8ciciolg:1:0 (api.saasexch.com)	Failed to load resource: net::ERR_BLOCKED_BY_CLIENT
...usd/sa.gif? project=binance:1:0 (api.saasexch.com)	Failed to load resource: net::ERR_BLOCKED_BY_CLIENT
...usd/sa.gif? project=binance:1:0 (api.saasexch.com)	Failed to load resource: net::ERR_BLOCKED_BY_CLIENT
...web/batch? project=cc1ljun9gpbp8ciciolg:1:0 (api.saasexch.com)	Failed to load resource: net::ERR_BLOCKED_BY_CLIENT
...usd/sa.gif? project=binance:1:0 (api.saasexch.com)	Failed to load resource: net::ERR_BLOCKED_BY_CLIENT
...web/batch? project=cc1ljun9gpbp8ciciolg:1:0 (api.saasexch.com)	Failed to load resource: net::ERR_BLOCKED_BY_CLIENT
...usd/sa.gif? project=binance:1:0 (api.saasexch.com)	Failed to load resource: net::ERR_BLOCKED_BY_CLIENT

Source	Description
...web/batch? project=cc1ljun9gpbp8ciciolg:1:0 (api.saasexch.com)	Failed to load resource: net::ERR_BLOCKED_BY_CLIENT
...usd/sa.gif? project=binance:1:0 (api.saasexch.com)	Failed to load resource: net::ERR_BLOCKED_BY_CLIENT
...web/batch? project=cc1ljun9gpbp8ciciolg:1:0 (api.saasexch.com)	Failed to load resource: net::ERR_BLOCKED_BY_CLIENT
...usd/sa.gif? project=binance:1:0 (api.saasexch.com)	Failed to load resource: net::ERR_BLOCKED_BY_CLIENT
...web/batch? project=cc1ljun9gpbp8ciciolg:1:0 (api.saasexch.com)	Failed to load resource: net::ERR_BLOCKED_BY_CLIENT
...usd/sa.gif? project=binance:1:0 (api.saasexch.com)	Failed to load resource: net::ERR_BLOCKED_BY_CLIENT
...web/batch? project=cc1ljun9gpbp8ciciolg:1:0 (api.saasexch.com)	Failed to load resource: net::ERR_BLOCKED_BY_CLIENT
...usd/sa.gif? project=binance:1:0 (api.saasexch.com)	Failed to load resource: net::ERR_BLOCKED_BY_CLIENT
...web/batch? project=cc1ljun9gpbp8ciciolg:1:0 (api.saasexch.com)	Failed to load resource: net::ERR_BLOCKED_BY_CLIENT
...usd/sa.gif? project=binance:1:0 (api.saasexch.com)	Failed to load resource: net::ERR_BLOCKED_BY_CLIENT

Source	Description
...web/batch? project=cc1ljun9gpbp8ciciolg:1:0 (api.saasexch.com)	Failed to load resource: net::ERR_BLOCKED_BY_CLIENT
...usd/sa.gif? project=binance:1:0 (api.saasexch.com)	Failed to load resource: net::ERR_BLOCKED_BY_CLIENT
...web/batch? project=cc1ljun9gpbp8ciciolg:1:0 (api.saasexch.com)	Failed to load resource: net::ERR_BLOCKED_BY_CLIENT
...usd/sa.gif? project=binance:1:0 (api.saasexch.com)	Failed to load resource: net::ERR_BLOCKED_BY_CLIENT
...web/batch? project=cc1ljun9gpbp8ciciolg:1:0 (api.saasexch.com)	Failed to load resource: net::ERR_BLOCKED_BY_CLIENT
...usd/sa.gif? project=binance:1:0 (api.saasexch.com)	Failed to load resource: net::ERR_BLOCKED_BY_CLIENT
...web/batch? project=cc1ljun9gpbp8ciciolg:1:0 (api.saasexch.com)	Failed to load resource: net::ERR_BLOCKED_BY_CLIENT
...usd/sa.gif? project=binance:1:0 (api.saasexch.com)	Failed to load resource: net::ERR_BLOCKED_BY_CLIENT
...usd/sa.gif? project=binance:1:0 (api.saasexch.com)	Failed to load resource: net::ERR_BLOCKED_BY_CLIENT
...usd/sa.gif? project=binance:1:0 (api.saasexch.com)	Failed to load resource: net::ERR_BLOCKED_BY_CLIENT

Source	Description
...usd/sa.gif? project=binance:1:0 (api.saasexch.com)	Failed to load resource: net::ERR_BLOCKED_BY_CLIENT
...report/upload:1:0 (api.saasexch.com)	Failed to load resource: net::ERR_BLOCKED_BY_CLIENT
...usd/sa.gif? project=binance:1:0 (api.saasexch.com)	Failed to load resource: net::ERR_BLOCKED_BY_CLIENT
...usd/sa.gif? project=binance:1:0 (api.saasexch.com)	Failed to load resource: net::ERR_BLOCKED_BY_CLIENT
...usd/sa.gif? project=binance:1:0 (api.saasexch.com)	Failed to load resource: net::ERR_BLOCKED_BY_CLIENT
...usd/sa.gif? project=binance:1:0 (api.saasexch.com)	Failed to load resource: net::ERR_BLOCKED_BY_CLIENT
...usd/sa.gif? project=binance:1:0 (api.saasexch.com)	Failed to load resource: net::ERR_BLOCKED_BY_CLIENT
...usd/sa.gif? project=binance:1:0 (api.saasexch.com)	Failed to load resource: net::ERR_BLOCKED_BY_CLIENT
...usd/sa.gif? project=binance:1:0 (api.saasexch.com)	Failed to load resource: net::ERR_BLOCKED_BY_CLIENT
...usd/sa.gif? project=binance:1:0 (api.saasexch.com)	Failed to load resource: net::ERR_BLOCKED_BY_CLIENT



Issues were logged in the [Issues](#) panel in Chrome Devtools



Issues logged to the Issues panel in Chrome Devtools indicate unresolved problems. They can come from network request failures, insufficient security controls, and other browser concerns. Open up the Issues panel in Chrome

DevTools for more details on each issue.

Issue type

Content security policy

○ Detected JavaScript libraries ^

All front-end JavaScript libraries detected on the page. [Learn more about this JavaScript library detection diagnostic audit.](#)

Name	Version
React	16.14.0
core-js	core-js-pure@2.6.11; core-js-global@3.31.1

TRUST AND SAFETY

○ Ensure CSP is effective against XSS attacks ^

A strong Content Security Policy (CSP) significantly reduces the risk of cross-site scripting (XSS) attacks. [Learn how to use a CSP to prevent XSS](#)

Description	Directive	Severity
Host allowlists can frequently be bypassed. Consider using CSP nonces or hashes instead, along with ``strict-dynamic`` if necessary.	script-src	High
``unsafe-inline`` allows the execution of unsafe in-page scripts and event handlers. Consider using	script-src	High

Description	Directive	Severity
CSP nonces or hashes to allow scripts individually.		
Avoid using plain URL schemes (data:) in this directive. Plain URL schemes allow scripts to be sourced from an unsafe domain.	<code>script-src</code>	High

PASSED AUDITS (9)

Hide

<p>● Uses HTTPS ^</p> <p>All sites should be protected with HTTPS, even ones that don't handle sensitive data. This includes avoiding mixed content, where some resources are loaded over HTTP despite the initial request being served over HTTPS. HTTPS prevents intruders from tampering with or passively listening in on the communications between your app and your users, and is a prerequisite for HTTP/2 and many new web platform APIs. Learn more about HTTPS.</p>
<p>● Allows users to paste into input fields ^</p> <p>Preventing input pasting is a bad practice for the UX, and weakens security by blocking password managers. Learn more about user-friendly input fields.</p>
<p>● Avoids requesting the geolocation permission on page load ^</p> <p>Users are mistrustful of or confused by sites that request their location without context. Consider tying the request to a user action instead. Learn more about the geolocation permission.</p>
<p>● Avoids requesting the notification permission on page load ^</p>

Users are mistrustful of or confused by sites that request to send notifications without context. Consider tying the request to user gestures instead. [Learn more about responsibly getting permission for notifications.](#)

● Displays images with correct aspect ratio ^

Image display dimensions should match natural aspect ratio. [Learn more about image aspect ratio.](#)

● Serves images with appropriate resolution ^

Image natural dimensions should be proportional to the display size and the pixel ratio to maximize image clarity. [Learn how to provide responsive images.](#)

● Page has the HTML doctype ^

Specifying a doctype prevents the browser from switching to quirks-mode. [Learn more about the doctype declaration.](#)

● Properly defines charset ^

A character encoding declaration is required. It can be done with a `<meta>` tag in the first 1024 bytes of the HTML or in the Content-Type HTTP response header. [Learn more about declaring the character encoding.](#)

● Page has valid source maps ^

Source maps translate minified code to the original source code. This helps developers debug in production. In addition, Lighthouse is able to provide further insights. Consider deploying source maps to take advantage of these benefits. [Learn more about source maps.](#)

URL	Map URL
bnbstatic.com	
...7.38.0/bundle.es5.min.js (bin.bnbstatic.com)	...7.38.0/bundle.es5.min.js.map (bin.bnbstatic.com)
Error: Failed fetching source map (403)	
Wistia Video	
...external/E-v1.js (fast.wistia.com)	...external/E-v1.js.map (fast.wistia.com)

NOT APPLICABLE (1)

Hide

Fonts with `font-display: optional` are preloaded ^

Preload optional fonts so first-time visitors may use them. [Learn more about preloading fonts](#)



SEO

These checks ensure that your page is following basic search engine optimization advice. There are many additional factors Lighthouse does not score here that may affect your search ranking, including performance on [Core Web Vitals](#). [Learn more about Google Search Essentials](#).

CRAWLING AND INDEXING

▲ Links are not crawlable ^

Search engines may use href attributes on links to crawl websites. Ensure that the href attribute of anchor elements links to an appropriate destination, so more pages of the site can be discovered. [Learn how to make links crawlable](#)

Uncrawlable Link



```
Buy with EUR  
<a target="_blank" class="css-oph2vt">
```

To appear in search results, crawlers need access to your app.

ADDITIONAL ITEMS TO MANUALLY CHECK (1)

Hide

○ Structured data is valid ^

Run the [Structured Data Testing Tool](#) and the [Structured Data Linter](#) to validate structured data. [Learn more about Structured Data](#).

Run these additional validators on your site to check additional SEO best practices.

● Has a `<meta name="viewport">` tag with `width` or `initial-scale` ^

A `<meta name="viewport">` not only optimizes your app for mobile screen sizes, but also prevents [a 300 millisecond delay to user input](#). [Learn more about using the viewport meta tag](#). TBT

● Document has a `<title>` element ^

The title gives screen reader users an overview of the page, and search engine users rely on it heavily to determine if a page is relevant to their search. [Learn more about document titles](#).

● Document has a meta description ^

Meta descriptions may be included in search results to concisely summarize page content. [Learn more about the meta description](#).

● Page has successful HTTP status code ^

Pages with unsuccessful HTTP status codes may not be indexed properly. [Learn more about HTTP status codes](#).

● Links have descriptive text ^

Descriptive link text helps search engines understand your content. [Learn how to make links more accessible](#).

● Page isn't blocked from indexing ^

Search engines are unable to include your pages in search results if they don't have permission to crawl them. [Learn more about crawler directives](#).

<p><input checked="" type="radio"/> robots.txt is valid ^</p>
<p>If your robots.txt file is malformed, crawlers may not be able to understand how you want your website to be crawled or indexed. Learn more about robots.txt.</p>
<p><input checked="" type="radio"/> Document has a valid hreflang ^</p>
<p>hreflang links tell search engines what version of a page they should list in search results for a given language or region. Learn more about hreflang.</p>
<p><input checked="" type="radio"/> Document has a valid rel=canonical ^</p>
<p>Canonical links suggest which URL to show in search results. Learn more about canonical links.</p>
<p><input checked="" type="radio"/> Document avoids plugins ^</p>
<p>Search engines can't index plugin content, and many devices restrict plugins or don't support them. Learn more about avoiding plugins.</p>

NOT APPLICABLE (3)

Hide

<p><input type="radio"/> Image elements have [alt] attributes ^</p>

Informative elements should aim for short, descriptive alternate text. Decorative elements can be ignored with an empty alt attribute. [Learn more about the alt attribute.](#)

Document uses legible font sizes ^

Font sizes less than 12px are too small to be legible and require mobile visitors to “pinch to zoom” in order to read. Strive to have >60% of page text \geq 12px. [Learn more about legible font sizes.](#)

Tap targets are sized appropriately ^

Interactive elements like buttons and links should be large enough (48x48px), or have enough space around them, to be easy enough to tap without overlapping onto other elements. [Learn more about tap targets.](#)



PWA

These checks validate the aspects of a Progressive Web App. [Learn what makes a good Progressive Web App.](#)

 INSTALLABLE

▲ Web app manifest or service worker do not meet the installability requirements — 1 reason ^

Service worker is the technology that enables your app to use many Progressive Web App features, such as offline, add to homescreen, and push notifications. With proper service worker and manifest implementations, browsers can proactively prompt users to add your app to their homescreen, which can lead to higher engagement. [Learn more about manifest installability requirements.](#)

Failure reason

Page has no manifest <link> URL

★ PWA OPTIMIZED

▲ Is not configured for a custom splash screen Failures: No manifest was fetched. ^

A themed splash screen ensures a high-quality experience when users launch your app from their homescreens. [Learn more about splash screens.](#)

▲ Does not set a theme color for the address bar. ^

Failures: No manifest was fetched, No ``<meta name="theme-color">`` tag found.

The browser address bar can be themed to match your site. [Learn more about theming the address bar.](#)

○ Content is sized correctly for the viewport ^

If the width of your app's content doesn't match the width of the viewport, your app might not be optimized for mobile screens. [Learn how to size content for the viewport.](#)

● Has a `<meta name="viewport">` tag with `width` or `initial-scale` ^

A `<meta name="viewport">` not only optimizes your app for mobile screen sizes, but also prevents [a 300 millisecond delay to user input](#). [Learn more about using the viewport meta tag](#). TBT

▲ Manifest doesn't have a maskable icon **No manifest was fetched** ^

A maskable icon ensures that the image fills the entire shape without being letterboxed when installing the app on a device. [Learn about maskable manifest icons](#).

ADDITIONAL ITEMS TO MANUALLY CHECK (3)

Hide

○ Site works cross-browser ^

To reach the most number of users, sites should work across every major browser. [Learn about cross-browser compatibility](#).

○ Page transitions don't feel like they block on the network ^

Transitions should feel snappy as you tap around, even on a slow network. This experience is key to a user's perception of performance. [Learn more about page transitions](#).

○ Each page has a URL ^

Ensure individual pages are deep linkable via URL and that URLs are unique for the purpose of shareability on social media. [Learn more about providing deep links](#).

These checks are required by the baseline [PWA Checklist](#) but are not automatically checked by Lighthouse. They do not affect your score but it's important that you verify them manually.



Publisher Ads

A Lighthouse plugin to improve ad speed and overall quality that is targeted at sites using GPT or AdSense tag. [Learn more](#)

NOT APPLICABLE (23)

Hide

<input type="radio"/> Tag load time — No tag requested	^
This metric measures the time for the ad tag's implementation script (pubads_impl.js for GPT; adsbygoogle.js for AdSense) to load after the page loads. Learn more .	
<input type="radio"/> First bid request time — No bids detected	^
This metric measures the elapsed time from the start of page load until the first bid request is made. Delayed bid requests will decrease impressions and viewability, and have a negative impact on ad revenue. Learn More .	
<input type="radio"/> First ad request time — No ads requested	^

This metric measures the elapsed time from the start of page load until the first ad request is made. Delayed ad requests will decrease impressions and viewability, and have a negative impact on ad revenue. [Learn more.](#)

Latency of first ad render — No ads rendered ^

This metric measures the time for the first ad iframe to render from page navigation. [Learn more.](#)

Cumulative ad shift — No ads rendered ^

Measures layout shifts that were caused by ads or happened near ads. Reducing cumulative ad-related layout shift will improve user experience. [Learn more.](#)

Total ad JS blocking time — No ad-related requests ^

Ad-related scripts are blocking the main thread. [Learn more.](#)

GPT and bids loaded in parallel — GPT not requested ^

To optimize ad loading, bid requests should not wait on GPT to load. This issue can often be fixed by making sure that bid requests do not wait on `googletag.pubadsReady` or `googletag.cmd.push`. [Learn More.](#)

Header bidding is parallelized — No bids detected ^

Send header bidding requests simultaneously, rather than serially, to retrieve bids more quickly. [Learn more.](#)

No bottleneck requests found — No ad-related requests ^

Speed up, load earlier, parallelize, or eliminate the following requests and their dependencies in order to speed up ad loading. [Learn More.](#)

Ad scripts are loaded statically — No tag requested ^

Load the following scripts directly with `<script async src=...>` instead of injecting scripts with JavaScript. Doing so allows the browser to preload scripts sooner. [Learn more](#).

Ads not blocked by load events — No ad-related requests ^

Waiting on load events increases ad latency. To speed up ads, eliminate the following load event handlers. [Learn More](#).

Minimal render-blocking resources found — No tag requested ^

Render-blocking resources slow down tag load times. Consider loading critical JS/CSS inline or loading scripts asynchronously or loading the tag earlier in the head. [Learn more](#).

No long tasks blocking ad-related network requests — No ad-related requests ^

Tasks blocking the main thread can delay ad requests and cause a poor user experience. Consider removing long blocking tasks or moving them off of the main thread. These tasks can be especially detrimental to performance on less powerful devices. [Learn more](#).

Ad request waterfall — No ads requested ^

Consider reducing the number of resources, loading multiple resources simultaneously, or loading resources earlier to improve ad speed. Requests that block ad loading can be found below. [Learn more](#).

Few or no ads loaded outside viewport — No visible slots ^

Too many ads loaded outside the viewport lowers viewability rates and impacts user experience. Consider loading ads below the fold lazily as the user scrolls down. Consider using GPT's [Lazy Loading API](#). [Learn more](#).

Ad tag is loaded asynchronously — No tag requested ^

Loading the ad tag synchronously blocks content rendering until the tag is fetched and loaded. Consider using the `async` attribute to load `gpt.js` and/or `adsbygoogle.js` asynchronously. [Learn more.](#)

Ad tag is loaded over HTTPS — No tag requested ^

For privacy and security, always load GPT/AdSense over HTTPS. Insecure pages should explicitly request the ad script securely. GPT Example: `<script async src="https://securepubads.g.doubleclick.net/tag/js/gpt.js">` AdSense Example: `<script async src="https://pagead2.googlesyndication.com/pagead/js/adsbygoogle.js">`. [Learn more.](#)

GPT tag is loaded from an official source — GPT not requested ^

Load GPT from 'securepubads.g.doubleclick.net' for standard integrations or from 'pagead2.googlesyndication.com' for limited ads. [Learn more.](#)

Ads to page-height ratio is within recommended range — No visible slots ^

The ads to page-height ratio can impact user experience and ultimately user retention. [Learn more.](#)


No ad found at the very top of the viewport — No visible slots ^


Over 10% of ads are never viewed because users scroll past them before they become viewable. By moving ad slots away from the very top of the viewport, users are more likely to see ads before scrolling away. [Learn more.](#)


No duplicate tags found — No tags requested ^


Loading a tag more than once in the same page is redundant and adds overhead without benefit. [Learn more.](#)


<p>○ Deprecated GPT API Usage — GPT not requested ^</p>
<p>Deprecated GPT API methods should be avoided to ensure your page is tagged correctly. Learn more.</p>
<p>○ GPT Errors — GPT not requested ^</p>
<p>Fix GPT errors to ensure your page is tagged as intended. Learn more.</p>


 Captured at Jan 31, 2024, 9:28 PM GMT+1

 Emulated Desktop with Lighthouse 11.3.0

 Single page load

 Initial page load

 Custom throttling

 Using Chromium 121.0.0.0 with devtools