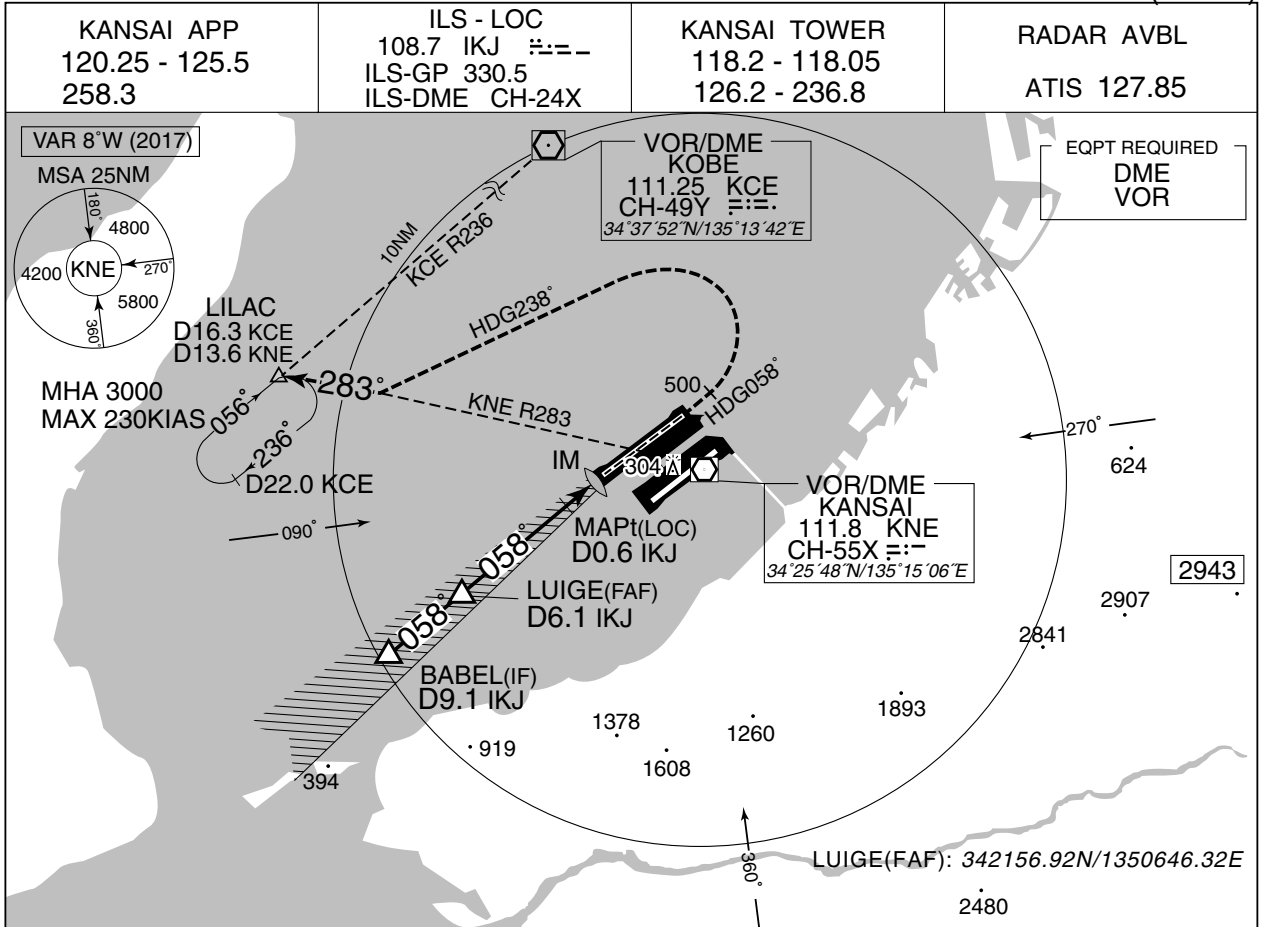


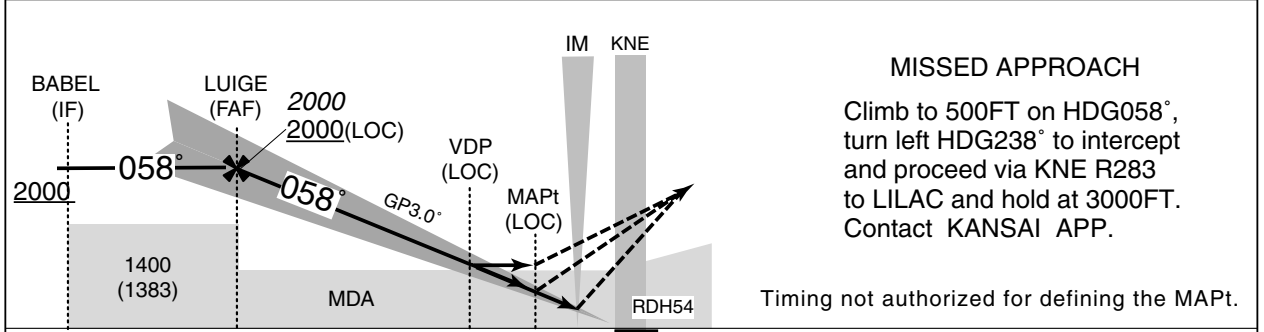
INSTRUMENT APPROACH CHART

RJBB / KANSAI INTL

ILS Z or LOC Z RWY06L (CAT II)



NM to IKJ	FAF	6	5	4	3	2	1	MAPt
ALT(3.0° APCH Path)	2000	1924	1605	1287	968	650	331	-



9.1	6.1	0.9	0.6	0.3	0.2	DME to IKJ
8.9	6.0	0.7	0.5	0.1	0	NM to THR

<b>MINIMA</b>			<b>THR elev. 15</b>			<b>AD elev. 17</b>			
<b>CAT</b>	<b>CAT II</b>			<b>CAT I</b>		<b>LOC</b>		<b>CIRCLING</b>	
	<b>DA(H)</b>	<b>RA</b>	<b>RVR</b>	<b>DA(H)</b>	<b>RVR/CMV</b>	<b>MDA(H)</b>	<b>RVR/CMV</b>	<b>MDA(H)</b>	<b>VIS</b>
A									1600
B	115	100	300	215	550	290	800	610	2400
C	(100)			(200)		(273)		(593)	
D/DL							1200		3200

Circling to NORTH side of RWY only.