

# Compound Spectrum List Report

## Analysis Info

Analysis Name E:\Data\AmaZon Data\MS Facility\Natalie\2022-11-07-LC-Klementine\KBS-17-9\_1-D,5\_1\_392.d  
Method 392.m  
Sample Name KBS-17-9  
Comment

Acquisition Date 7/11/2022 9:00:33 PM

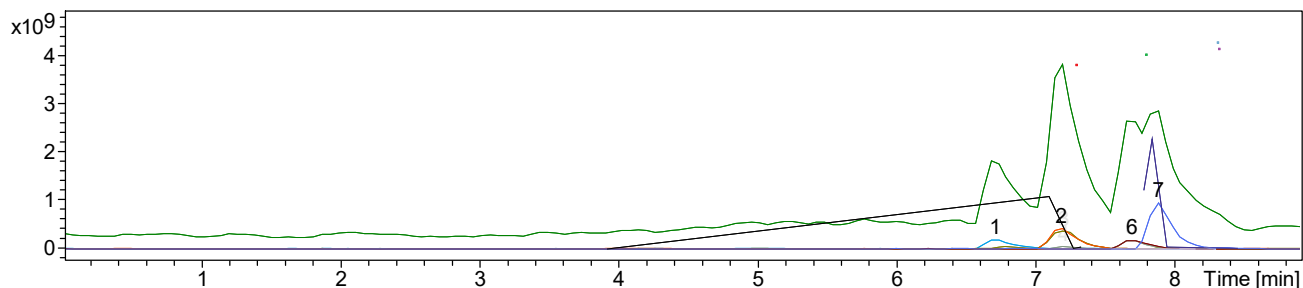
Operator demo  
Instrument amaZon SL

## Acquisition Parameter

Ion Source Type ESI  
Mass Range Mode Enhanced Resolution  
Accumulation Time 90  $\mu$ s  
SPS Target Mass 192 m/z

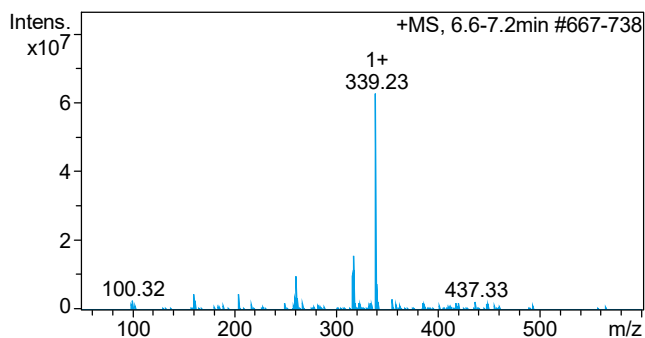
Ion Polarity Positive  
Scan Begin 50 m/z  
RF Level 44 %  
Averages 5 Spectra

Alternating Ion Polarity on  
Scan End 600 m/z  
Trap Drive 40.5  
n/a n/a



#	RT [min]	Trace	Area	Area %	S/N
1	6.7	EIC 317.27 +All MS	2672786944	23.50	49.6
2	7.2	EIC 199.20 +All MS	5705571840	50.17	221.5
3	7.2	EIC 355.30 +All MS	5502628864	48.39	112.4
4	7.2	EIC 393.11 +All MS	525600768	4.62	15.6
5	7.7	EIC 293.26 +All MS	2649672448	23.30	107.1
6	7.7	EIC 393.11 +All MS	2261310976	19.88	57.9
7	7.9	EIC 439.24 +All MS	11372053504	100.00	578.1

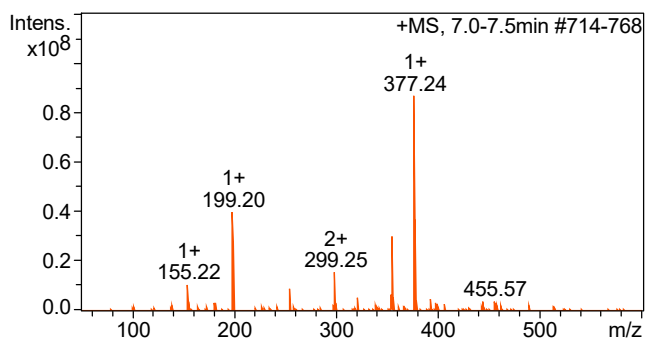
## Cmpd 1, 6.7 min



m/z	z	I	FWHM
161.19		4561027	0.18
205.18	1+	4480150	0.13
260.60	3+	3390575	0.09
261.21	1+	9818707	0.22
262.11	1+	3518948	0.13
316.75		2761885	0.15
317.27	1+	15888688	0.24
339.23	1+	62547576	0.17
340.23	1+	7555076	0.19
355.59		3273222	0.10

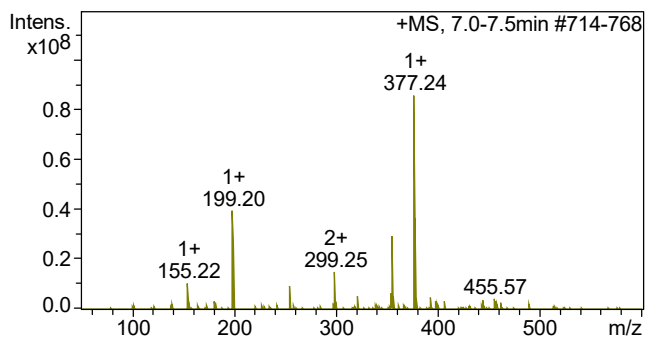
# Compound Spectrum List Report

## Cmpd 2, 7.2 min



m/z	z	I	FWHM
155.22	1+	10789702	0.20
199.20	1+	40109980	0.20
255.24		9253062	0.16
298.77	2+	8832260	0.24
299.25	2+	15587045	0.13
354.90	1+	10146750	0.10
355.19		27884032	0.26
355.28	2+	29888394	0.26
377.24	1+	86758592	0.24
378.24	1+	26374368	0.18

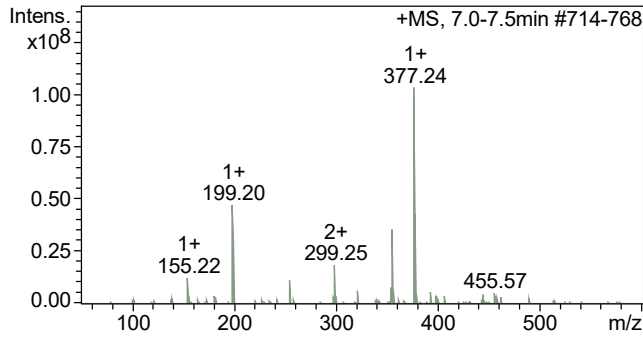
## Cmpd 3, 7.2 min



m/z	z	I	FWHM
155.22	1+	10479905	0.20
199.20	1+	39374896	0.20
255.24		9215873	0.16
298.77	2+	8767964	0.24
299.25	2+	15310399	0.13
354.90	1+	10043111	0.10
355.19		27343342	0.26
355.28	2+	29311466	0.26
377.24	1+	85791672	0.24
378.24	1+	25832180	0.18

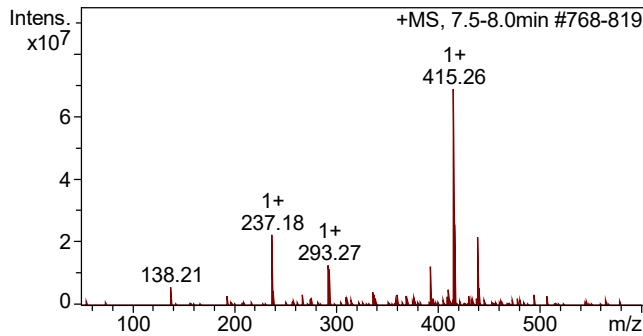
# Compound Spectrum List Report

## Cmpd 4, 7.2 min



m/z	z	I	FWHM
155.22	1+	12472104	0.20
199.20	1+	47213720	0.21
200.19	1+	10145551	0.11
255.24		11348590	0.16
298.77	2+	10761888	0.24
299.25	2+	18404746	0.13
354.90	1+	12276953	0.10
355.28	2+	35350976	0.26
377.24	1+	103167096	0.24
378.24	1+	30712644	0.18

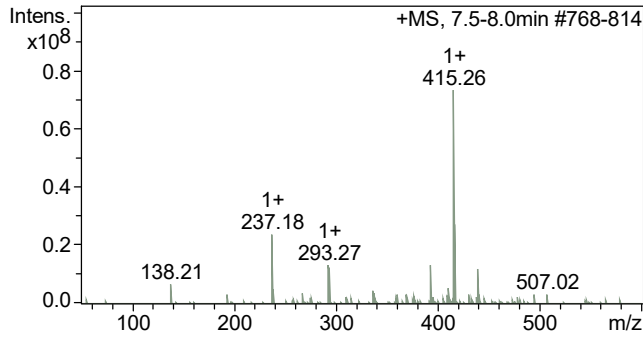
## Cmpd 5, 7.7 min



m/z	z	I	FWHM
138.21		6089127	0.10
237.18	1+	22362094	0.22
238.25	1+	4797223	0.13
293.27	1+	12895006	0.31
393.11	1+	12374738	0.24
410.24	4+	5031745	0.10
415.26	1+	68691128	0.22
416.28	1+	25762398	0.18
439.23	1+	21788858	0.22
440.20	1+	5328575	0.25

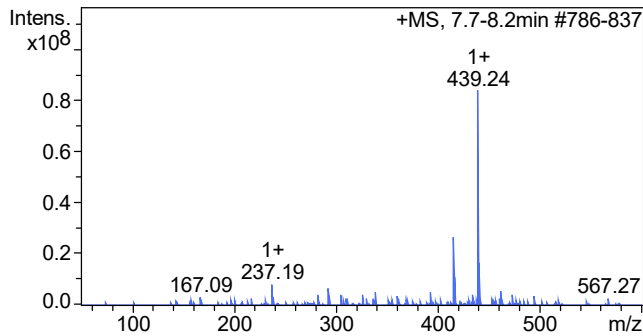
# Compound Spectrum List Report

## Cmpd 6, 7.7 min



m/z	z	I	FWHM
138.21		6644292	0.10
237.18	1+	23917224	0.22
238.25	1+	4899826	0.13
293.27	1+	13500441	0.31
392.76		4877694	0.10
393.11	1+	13153845	0.24
410.24	4+	5489293	0.10
415.26	1+	73426752	0.22
416.28	1+	27353234	0.18
439.23	1+	12256199	0.22

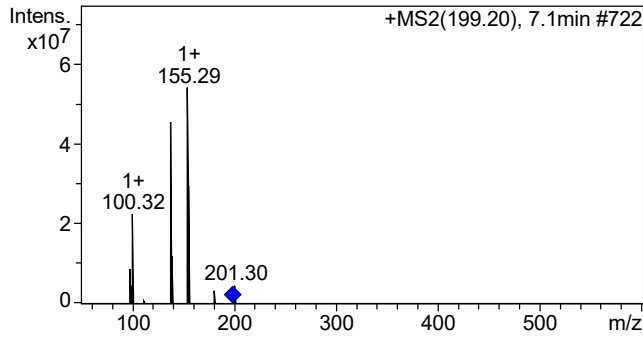
## Cmpd 7, 7.9 min



m/z	z	I	FWHM
237.19	1+	8348595	0.22
293.27		6817772	0.22
326.30		4459215	0.10
339.23		5289952	0.11
393.10		5204559	0.17
415.26	1+	26607474	0.22
416.27	1+	11392035	0.24
439.24	1+	83782544	0.23
440.21	1+	16650797	0.26
462.41	1+	5653263	0.12

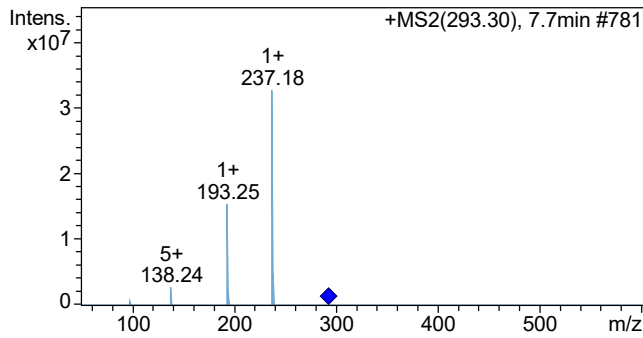
# Compound Spectrum List Report

## +MS2(199.20), 7.1min #722



m/z	z	I	FWHM
98.23		8934765	0.10
99.93		3892016	0.10
100.32	1+	22409848	0.17
101.24	1+	5775701	0.10
138.22	1+	45637452	0.18
139.24	1+	11825161	0.10
155.29	1+	54062480	0.26
156.27	1+	3954465	0.10
181.21		3388588	0.10
201.30		4731046	0.10

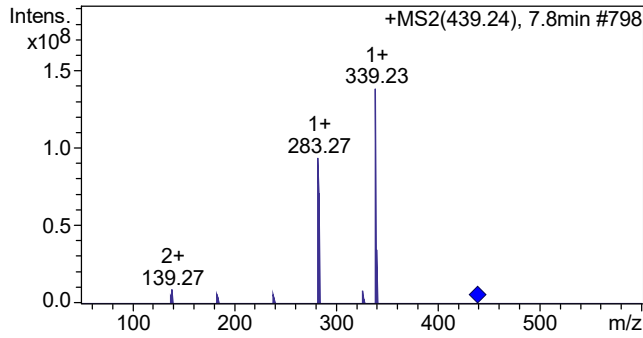
## +MS2(293.30), 7.7min #781



m/z	z	I	FWHM
98.27		715174	0.10
138.24	5+	2727325	0.15
138.41	5+	1417508	0.09
193.25	1+	15497756	0.27
194.26	1+	1971142	0.23
237.18	1+	32781366	0.18
238.19	1+	4886383	0.19

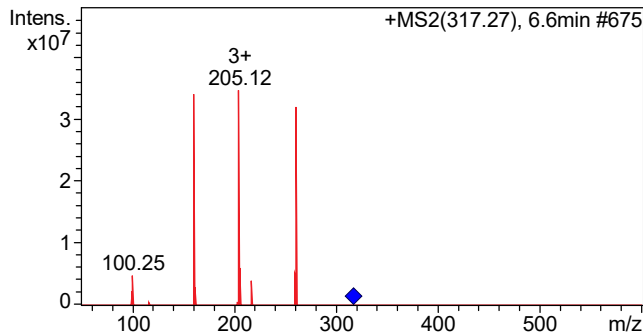
# Compound Spectrum List Report

## +MS2(439.24), 7.8min #798



m/z	z	I	FWHM
139.27	2+	9188970	0.10
184.18		6009199	0.10
239.36	3+	5954967	0.10
283.27	1+	93677704	0.16
284.06		7004120	0.07
284.31	1+	11803715	0.11
327.15		8213496	0.10
339.23	1+	138217760	0.21
340.13		12616986	0.10
340.32	1+	34429200	0.11

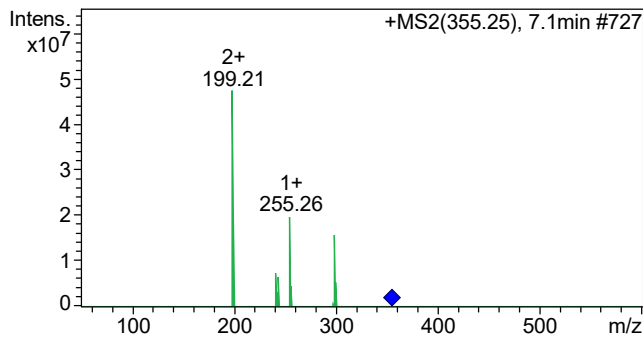
## +MS2(317.27), 6.6min #675



m/z	z	I	FWHM
100.25		4914215	0.12
161.18	1+	34104200	0.15
204.76		4914778	0.09
205.12	3+	34742224	0.15
205.40	3+	5996882	0.10
206.14	3+	6015202	0.10
217.15		3944900	0.10
260.12	3+	5226443	0.10
260.79		11390490	0.10
261.14		31945964	0.17

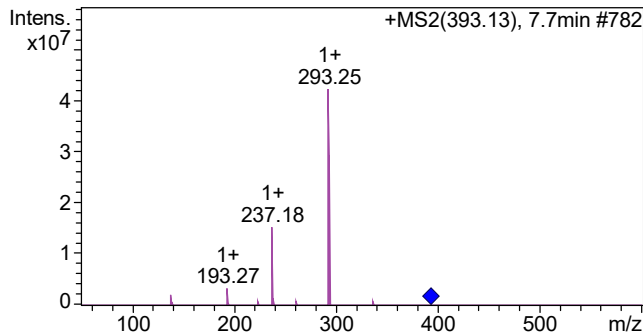
# Compound Spectrum List Report

## +MS2(355.25), 7.1min #727



m/z	z	I	FWHM
199.21	2+	47319048	0.13
199.48	2+	6456201	0.09
241.38	1+	7283988	0.10
242.34	1+	3333163	0.10
243.27	4+	6513443	0.10
243.65	4+	4860953	0.10
255.26	1+	19775542	0.12
256.15	1+	4584751	0.10
299.12	1+	15809096	0.11
300.21	1+	5589334	0.10

## +MS2(393.13), 7.7min #782



m/z	z	I	FWHM
138.22	1+	2102573	0.11
139.36	1+	652997	0.10
193.27	1+	3315216	0.15
223.18		767816	0.10
237.18	1+	15419842	0.24
238.28	1+	1289091	0.12
261.12		777658	0.10
293.25	1+	42174720	0.24
294.26	1+	4747106	0.19
337.05		852713	0.10