

Compound Spectrum List Report

Analysis Info

Analysis Name E:\Data\AmaZon Data\MS Facility\Nick\2022-12-19-KlementineLCMSMS\KBS-17-11_2-A,7_1_694.d
Method 694.m
Sample Name KBS-17-11
Comment

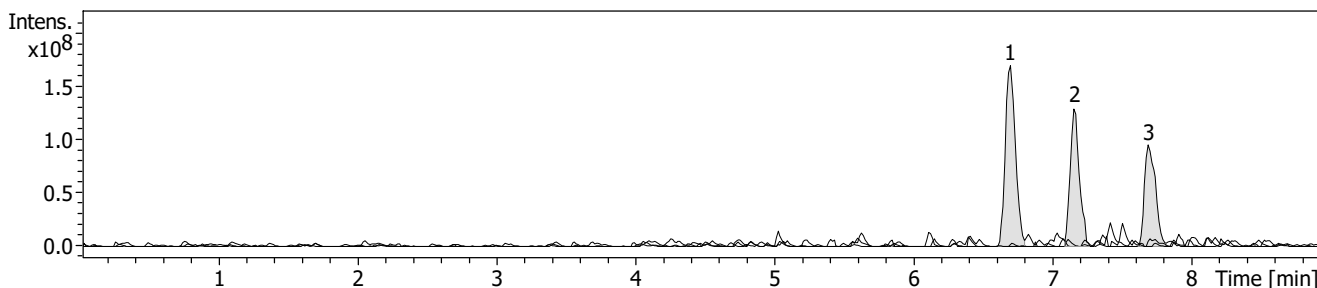
Acquisition Date 19/12/2022 5:18:00 PM
Operator demo
Instrument amaZon SL

Acquisition Parameter

Ion Source Type ESI
Mass Range Mode Enhanced Resolution
Accumulation Time 1130 μ s
SPS Target Mass 392 m/z

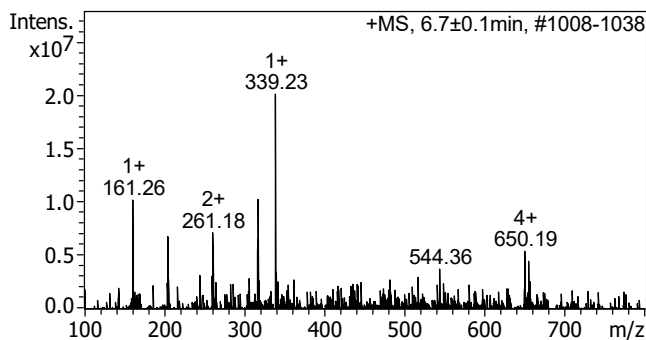
Ion Polarity Negative
Scan Begin 100 m/z
RF Level 63 %
Averages 3 Spectra

Alternating Ion Polarity on
Scan End 800 m/z
Trap Drive 50.0



#	RT [min]	Trace	Area	Area %	S/N
1	6.7	EIC 339.22 \pm 0.1 +All MS	870047296	100.00	73.7
2	7.2	EIC 377.27 \pm 0.1 +All MS	597217920	68.64	47.9
3	7.7	EIC 415.29 \pm 0.1 +All MS	526010304	60.46	47.3

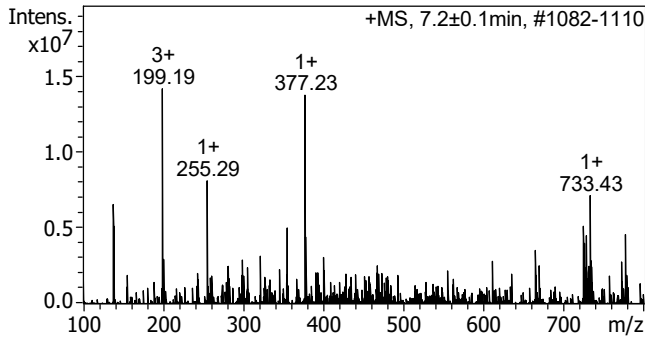
Cmpd 1, 6.7 min



m/z	z	I	FWHM
161.26	1+	10219142	0.18
205.16	3+	6813593	0.24
261.18	2+	7189300	0.19
317.15	1+	6630128	0.08
317.28		10300499	0.11
339.23	1+	20147540	0.20
544.36		3762284	0.21
650.19	4+	5413569	0.21
655.20	4+	3939241	0.14
655.36	1+	4468995	0.12

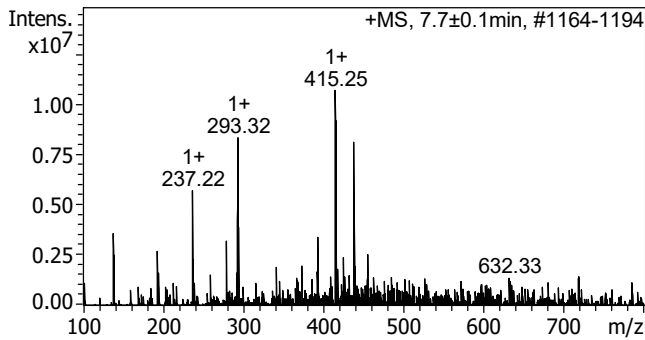
Compound Spectrum List Report

Cmpd 2, 7.2 min



m/z	z	I	FWHM
138.28		6569995	0.13
199.19	3+	14199625	0.18
199.35	3+	6591421	0.10
255.29	1+	8122665	0.22
355.22	2+	4988612	0.22
377.23	1+	13778261	0.19
724.97	1+	5116939	0.10
728.44	3+	4509522	0.11
733.43	1+	7143831	0.28
777.46	1+	4595892	0.11

Cmpd 3, 7.7 min



m/z	z	I	FWHM
138.25		3595245	0.17
193.21	3+	2683236	0.10
237.22	1+	5730230	0.15
279.17		3196921	0.11
293.32	1+	8358202	0.25
294.33	1+	3912208	0.18
393.26	1+	3384036	0.11
415.25	1+	10736979	0.21
438.35	1+	8148909	0.19
455.29		2539707	0.16