

Compound Spectrum List Report

Analysis Info

Analysis Name E:\Data\AmaZon Data\MS Facility\Nick\2022-12-19-KlementineLCMSMS\KBS-17-12-A_2-A,8_1_696.d
Method 696.m
Sample Name KBS-17-12-A
Comment

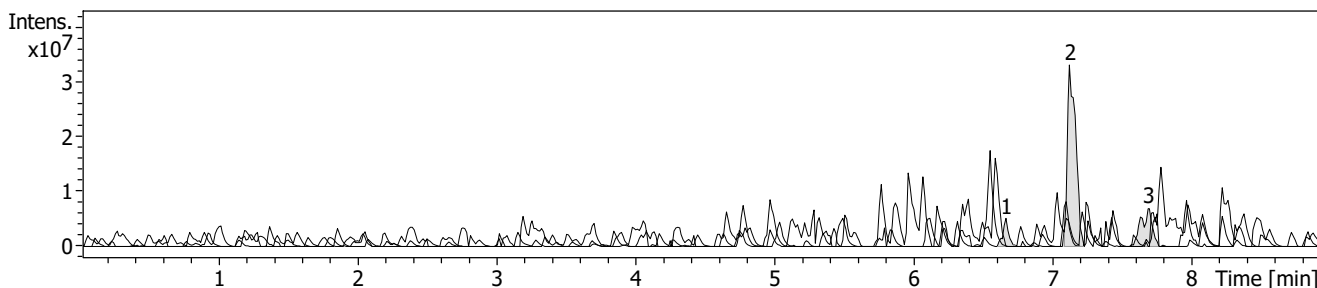
Acquisition Date 19/12/2022 5:37:48 PM
Operator demo
Instrument amaZon SL

Acquisition Parameter

Ion Source Type ESI
Mass Range Mode Enhanced Resolution
Accumulation Time 997 μ s
SPS Target Mass 392 m/z

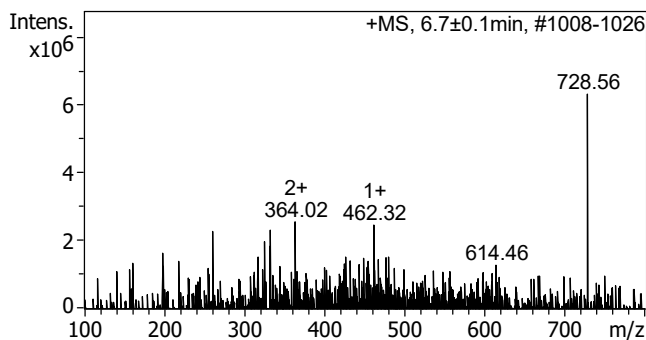
Ion Polarity Negative
Scan Begin 100 m/z
RF Level 63 %
Averages 3 Spectra

Alternating Ion Polarity on
Scan End 800 m/z
Trap Drive 50.0



#	RT [min]	Trace	Area	Area %	S/N
1	6.7	EIC 339.22±0.1 +All MS	15015702	10.74	2.8
2	7.1	EIC 377.27±0.1 +All MS	139788416	100.00	12.7
3	7.7	EIC 415.29±0.1 +All MS	39049756	27.93	5.3

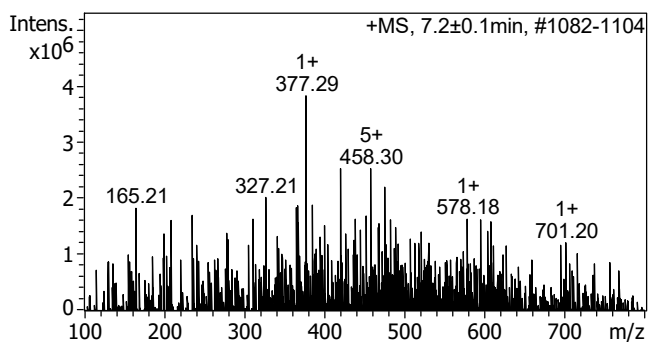
Cmpd 1, 6.7 min



m/z	z	I	FWHM
198.23		1650571	0.10
261.15		2290384	0.10
317.15	1+	1531309	0.11
325.21	1+	1992488	0.10
332.34		2327000	0.20
364.02	2+	2562887	0.10
427.13	1+	1528363	0.17
462.32	1+	2471115	0.11
480.22		1541860	0.10
728.56		6339677	0.10

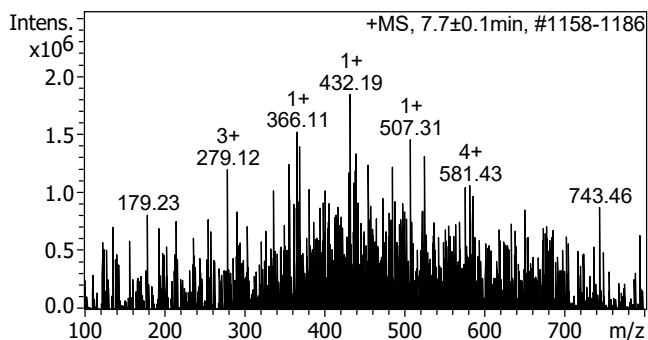
Compound Spectrum List Report

Cmpd 2, 7.1 min



m/z	z	I	FWHM
165.21		1831211	0.10
235.14	3+	1700353	0.09
327.21		2028269	0.15
365.25		1842029	0.11
367.13		1878593	0.12
377.29	1+	3837698	0.18
385.11	1+	1887868	0.14
420.28	1+	2533013	0.12
458.30	5+	2539528	0.12
475.27		2204171	0.10

Cmpd 3, 7.7 min



m/z	z	I	FWHM
279.12	3+	1202725	0.12
356.19		1246989	0.11
366.11	1+	1522655	0.19
369.09	1+	1400687	0.16
432.19	1+	1848691	0.11
439.37		1337790	0.10
455.17		1241624	0.12
485.31	1+	1223900	0.13
507.31	1+	1457891	0.19
525.39	1+	1314213	0.10