

Compound Spectrum List Report

Analysis Info

Analysis Name E:\Data\AmaZon Data\MS Facility\Nick\2022-12-19-KlementineLCMSMS\KBS-17-12-C_2-B_2_1_698.d
Method 698.m
Sample Name KBS-17-12-C
Comment

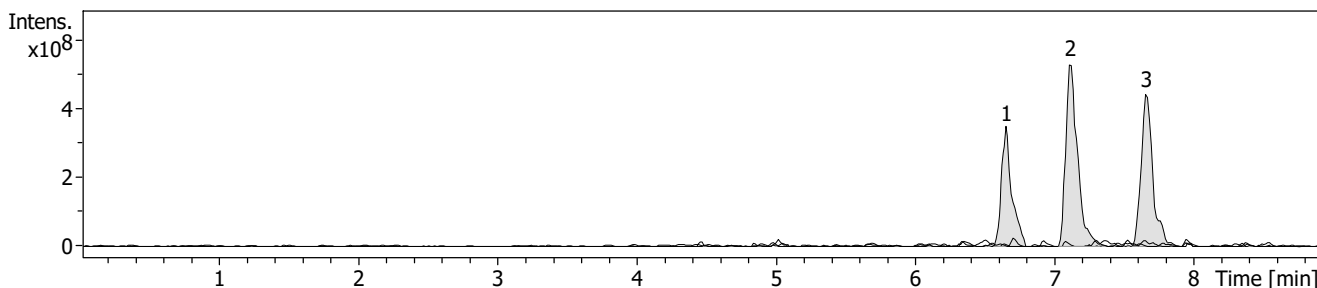
Acquisition Date 19/12/2022 5:57:36 PM
Operator demo
Instrument amaZon SL

Acquisition Parameter

Ion Source Type ESI
Mass Range Mode Enhanced Resolution
Accumulation Time 1206 μ s
SPS Target Mass 392 m/z

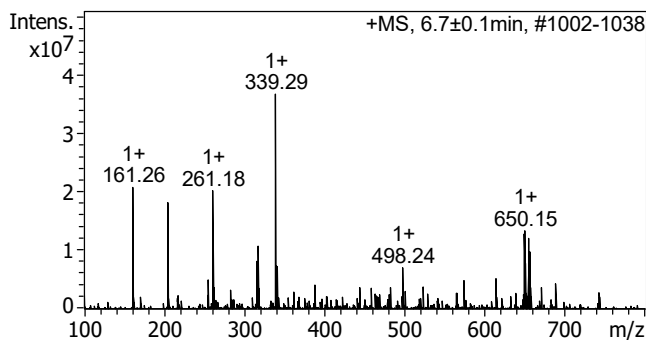
Ion Polarity Negative
Scan Begin 100 m/z
RF Level 63 %
Averages 3 Spectra

Alternating Ion Polarity on
Scan End 800 m/z
Trap Drive 50.0



#	RT [min]	Trace	Area	Area %	S/N
1	6.7	EIC 339.22 \pm 0.1 +All MS	1831111424	58.53	128.5
2	7.1	EIC 377.27 \pm 0.1 +All MS	3128630784	100.00	195.6
3	7.7	EIC 415.29 \pm 0.1 +All MS	2573726208	82.26	215.4

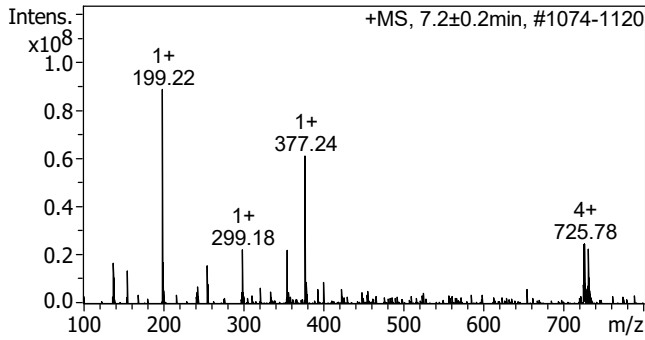
Cmpd 1, 6.7 min



m/z	z	I	FWHM
161.26	1+	20848034	0.22
205.15	1+	18236872	0.21
261.18	1+	20309900	0.15
317.33	2+	10737710	0.26
339.29	1+	36859640	0.18
649.26	4+	12865616	0.09
649.67	1+	12329881	0.19
650.15	1+	13372784	0.28
655.29	4+	12090867	0.17
656.37	1+	9751620	0.11

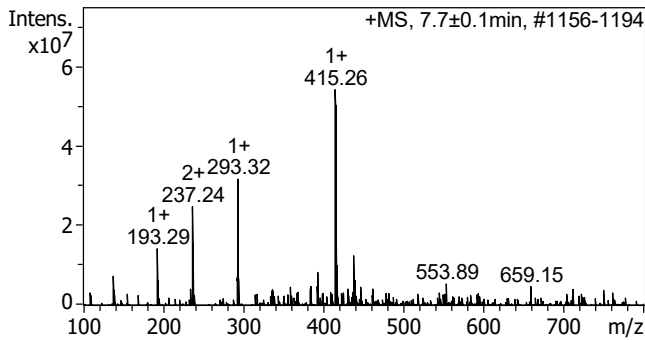
Compound Spectrum List Report

Cmpd 2, 7.1 min



m/z	z	I	FWHM
199.22	1+	88995424	0.19
200.24	1+	17021546	0.14
299.18	1+	22291990	0.20
355.25	1+	22038432	0.14
377.24	1+	61381628	0.17
725.41	4+	17522486	0.18
725.78	4+	24659856	0.13
725.95	4+	19769276	0.09
726.24	4+	18152642	0.17
731.21	3+	22755508	0.13

Cmpd 3, 7.7 min



m/z	z	I	FWHM
138.23	1+	7325047	0.23
193.29	1+	14226698	0.24
237.24	2+	24904766	0.21
293.32	1+	31840466	0.19
294.24	1+	6663471	0.22
393.19	1+	8290658	0.11
415.26	1+	54259220	0.14
416.28	1+	16068196	0.13
417.25	1+	10040210	0.11
438.27		12446040	0.24