

Compound Spectrum List Report

Analysis Info

Analysis Name E:\Data\AmaZon Data\MS Facility\Nick\2022-12-19-KlementineLCMSMS\KBS-17-12-D_2-B,3_1_699.d
Method 699.m
Sample Name KBS-17-12-D
Comment

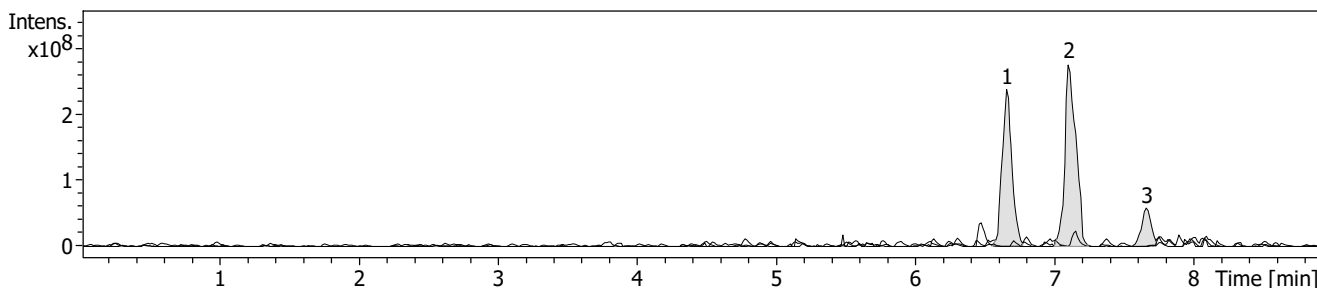
Acquisition Date 19/12/2022 6:07:36 PM
Operator demo
Instrument amaZon SL

Acquisition Parameter

Ion Source Type ESI
Mass Range Mode Enhanced Resolution
Accumulation Time 184 μ s
SPS Target Mass 392 m/z

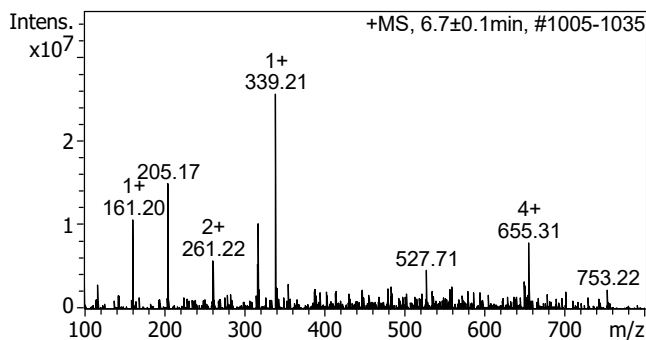
Ion Polarity Positive
Scan Begin 100 m/z
RF Level 63 %
Averages 3 Spectra

Alternating Ion Polarity on
Scan End 800 m/z
Trap Drive 48.2



#	RT [min]	Trace	Area	Area %	S/N
1	6.7	EIC 339.22±0.1 +All MS	1178071936	76.51	113.3
2	7.1	EIC 377.27±0.1 +All MS	1539812096	100.00	89.9
3	7.7	EIC 415.29±0.1 +All MS	272887584	17.72	22.1

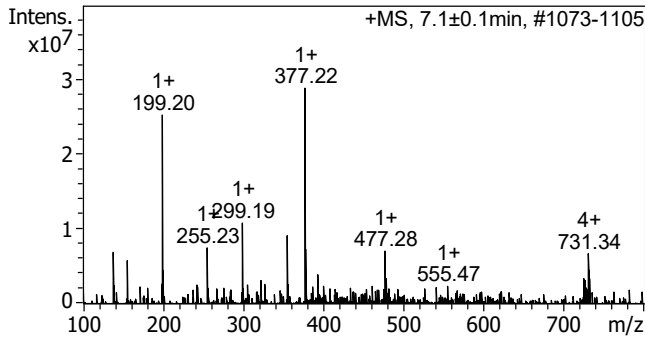
Cmpd 1, 6.7 min



m/z	z	I	FWHM
100.37	1+	4662003	0.17
161.20	1+	10631951	0.18
205.17		14995386	0.14
260.84	1+	4034167	0.15
261.22	2+	5796878	0.25
317.02	1+	5304697	0.07
317.31	1+	10175354	0.11
339.21	1+	25701300	0.22
527.71		4604497	0.10
655.31	4+	7927054	0.19

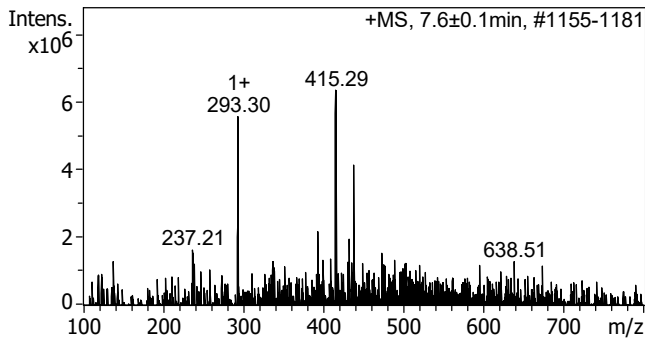
Compound Spectrum List Report

Cmpd 2, 7.1 min



m/z	z	I	FWHM
138.15	1+	6890992	0.12
199.20	1+	25287420	0.26
255.23	1+	7453385	0.21
299.19	1+	10784609	0.20
355.14	2+	7321942	0.10
355.28		9139685	0.10
377.22	1+	28835878	0.20
378.26	1+	7302573	0.18
477.28	1+	7095395	0.12
731.34	4+	6702209	0.11

Cmpd 3, 7.7 min



m/z	z	I	FWHM
237.21		1630196	0.16
237.33	1+	1547333	0.12
293.30	1+	5586768	0.17
393.32	5+	2180064	0.22
409.24	2+	1363431	0.13
415.29		6366573	0.20
416.29		3385222	0.13
432.24		1948959	0.16
438.25	1+	4153091	0.23
473.29	1+	1545595	0.10