

Compound Spectrum List Report

Analysis Info

Analysis Name E:\Data\AmaZon Data\MS Facility\Nick\2022-12-19-KlementineLCMSMS\KBS-17-12-E_2-B,4_1_700.d
Method 700.m
Sample Name KBS-17-12-E
Comment

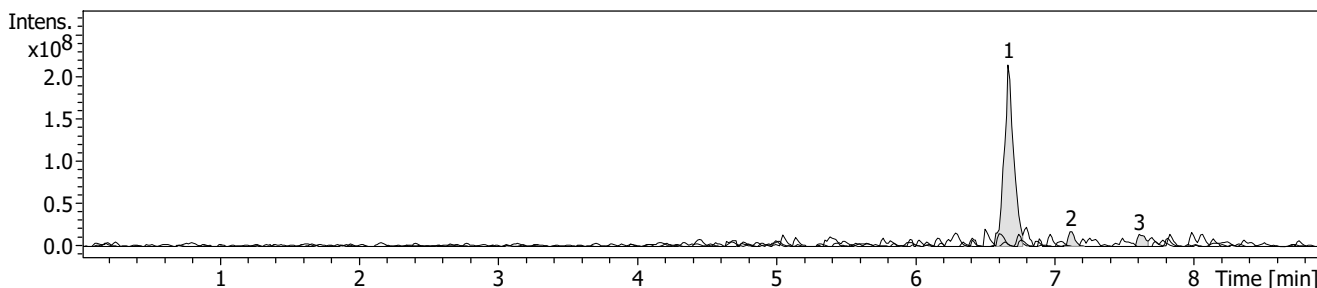
Acquisition Date 19/12/2022 6:17:35 PM
Operator demo
Instrument amaZon SL

Acquisition Parameter

Ion Source Type ESI
Mass Range Mode Enhanced Resolution
Accumulation Time 214 μ s
SPS Target Mass 392 m/z

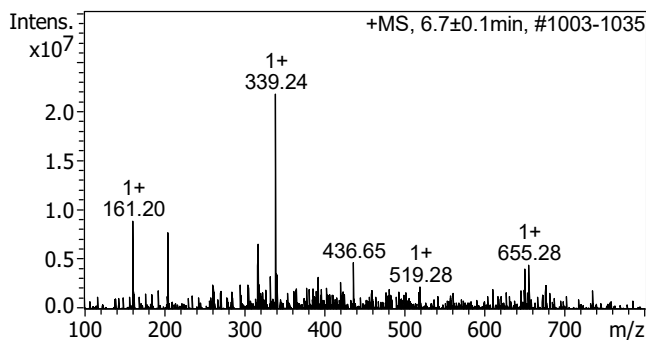
Ion Polarity Positive
Scan Begin 100 m/z
RF Level 63 %
Averages 3 Spectra

Alternating Ion Polarity on
Scan End 800 m/z
Trap Drive 48.2



#	RT [min]	Trace	Area	Area %	S/N
1	6.7	EIC 339.22±0.1 +All MS	1047417280	100.00	97.6
2	7.1	EIC 377.27±0.1 +All MS	59535104	5.68	7.4
3	7.6	EIC 415.29±0.1 +All MS	56527936	5.40	9.0

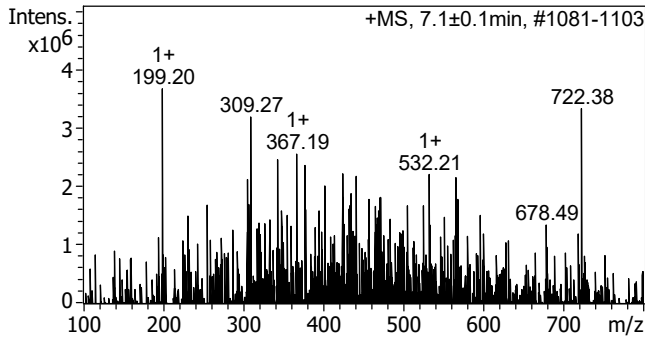
Cmpd 1, 6.7 min



m/z	z	I	FWHM
161.20	1+	8929384	0.24
205.18	1+	7754026	0.16
317.27	1+	6568066	0.34
332.45	1+	3272190	0.17
339.24	1+	21841374	0.21
340.26	1+	3614140	0.23
392.18	1+	3181759	0.10
436.65		4678366	0.10
650.13	4+	4057500	0.14
655.28	1+	4424815	0.15

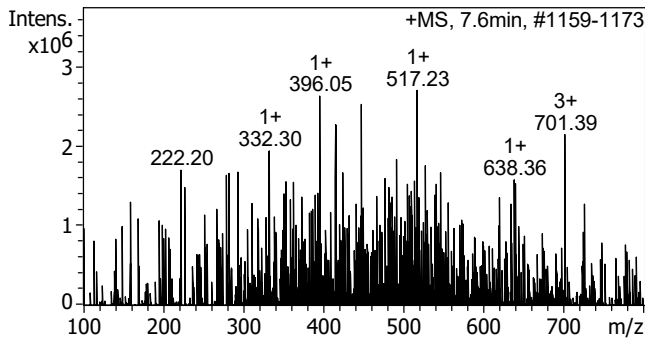
Compound Spectrum List Report

Cmpd 2, 7.1 min



m/z	z	I	FWHM
199.20	1+	3687914	0.16
309.27		3201260	0.10
343.27		2470001	0.10
367.19	1+	2564980	0.11
377.25	3+	2370689	0.14
424.10		2230352	0.11
441.16	5+	2188082	0.08
532.21	1+	2221871	0.10
565.87		2161531	0.10
722.38		3345535	0.14

Cmpd 3, 7.6 min



m/z	z	I	FWHM
222.20		1703522	0.10
293.27		1684042	0.10
332.30	1+	1947731	0.11
396.05	1+	2638252	0.10
415.29	1+	2277754	0.12
447.27		2537071	0.10
491.36		1843985	0.11
517.23	1+	2713064	0.10
527.30	1+	1760722	0.10
701.39	3+	2153253	0.10