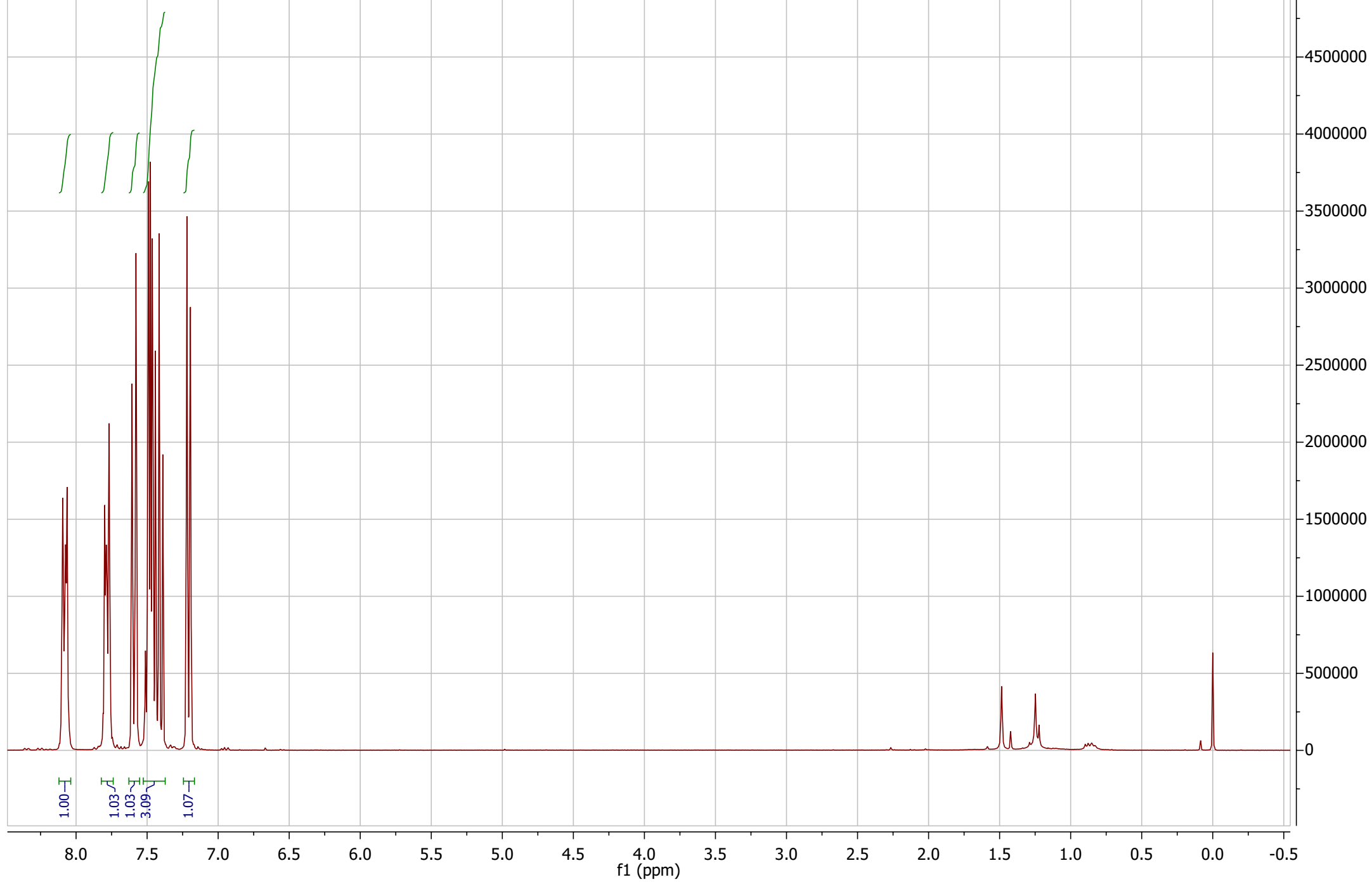
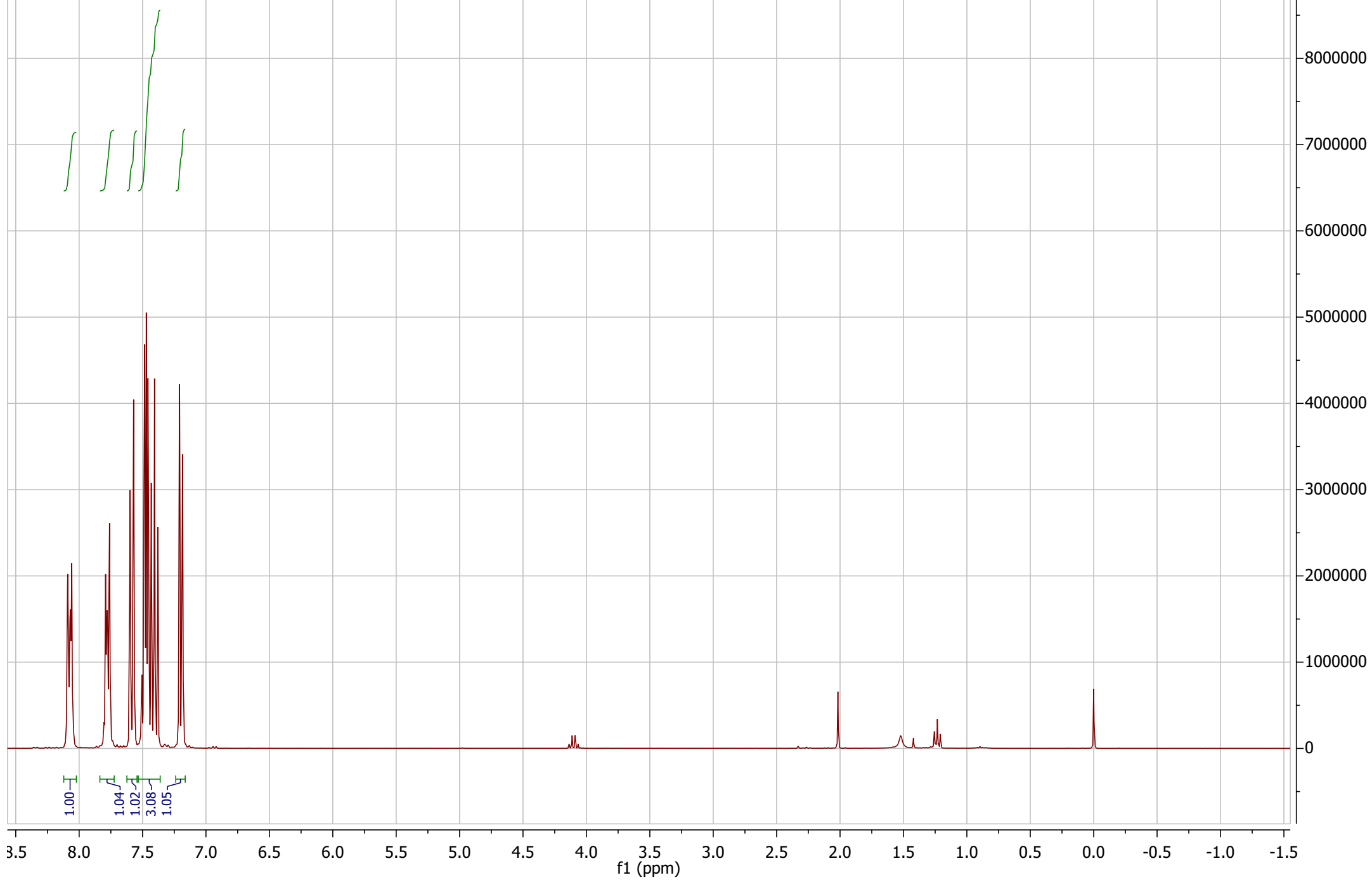


KBS23-2 F2.1.fid
Mail Data/Notify to kbur3804@uni.sydney.edu.au
Unikey kbur3804

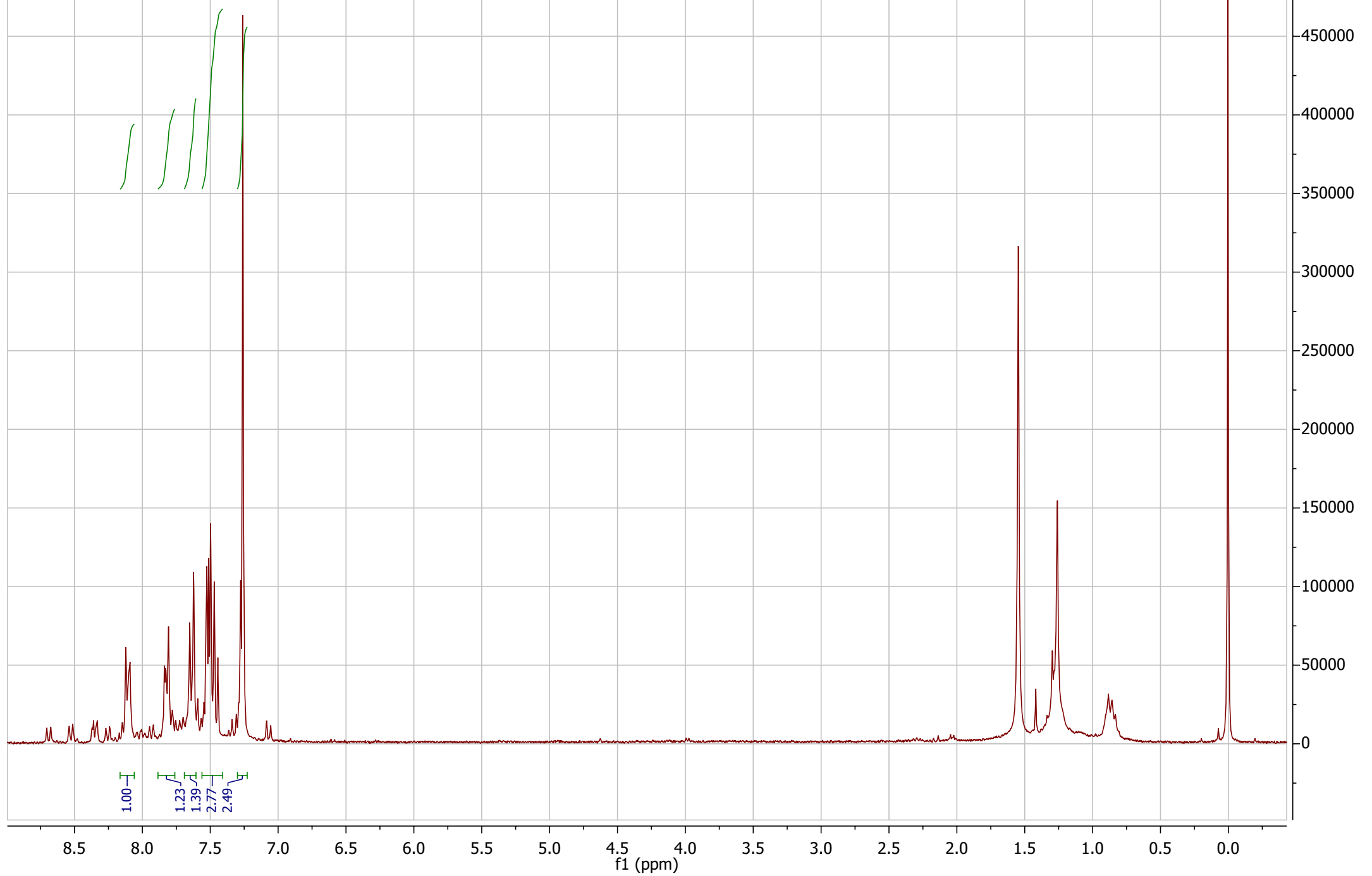
PROTON CDCI3 {D:\NMRDATA\iconnmr\20230131} {SHARED\nmrvisitor} 1



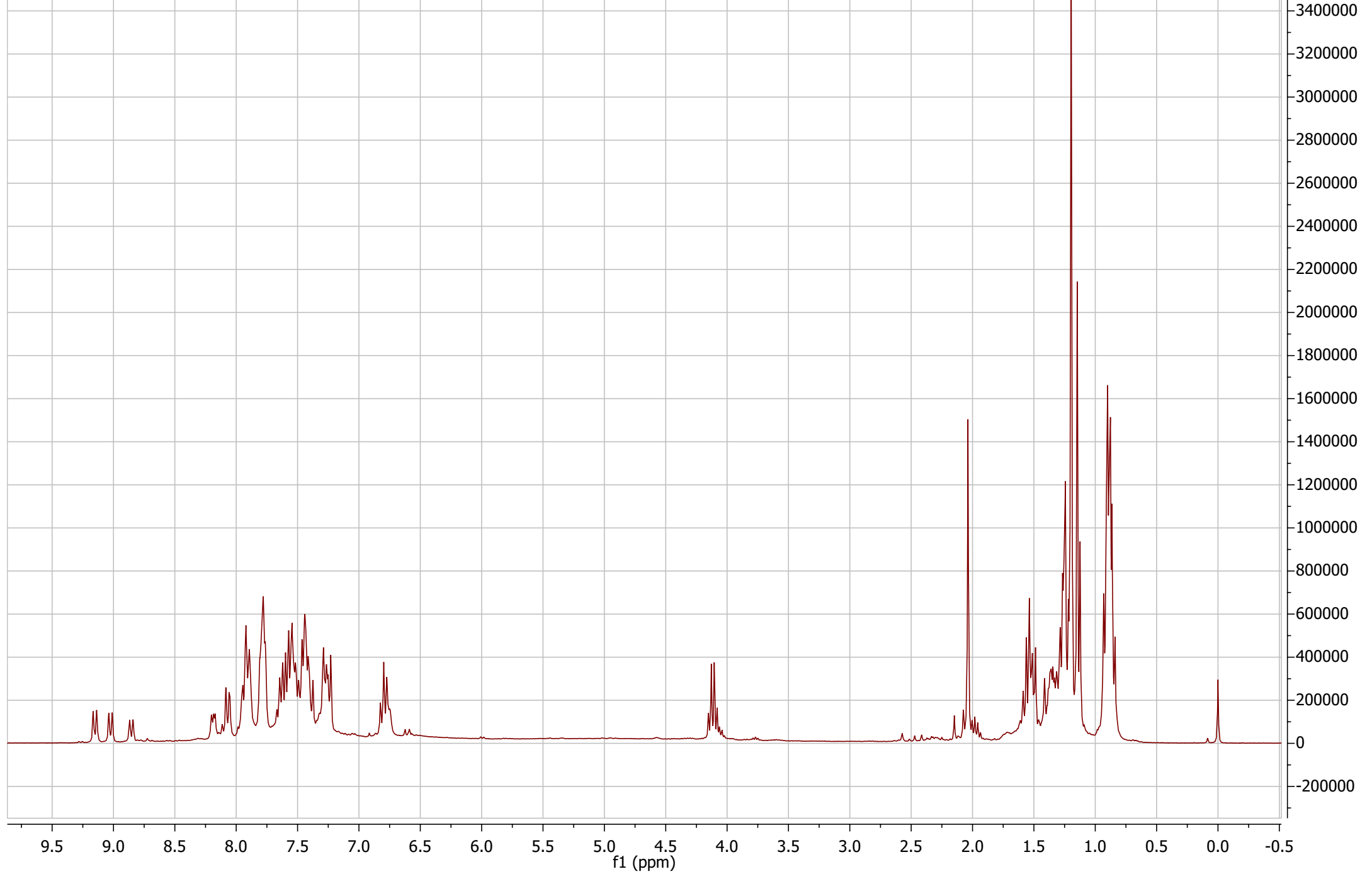
KBS23-2 F3-4.1.fid
Mail Data/Notify to kbur3804@uni.sydney.edu.au
Unikey kbur3804
PROTON CDCI3 {D:\NMRDATA\iconnmr\20230131} {SHARED\nmrvisitor} 12



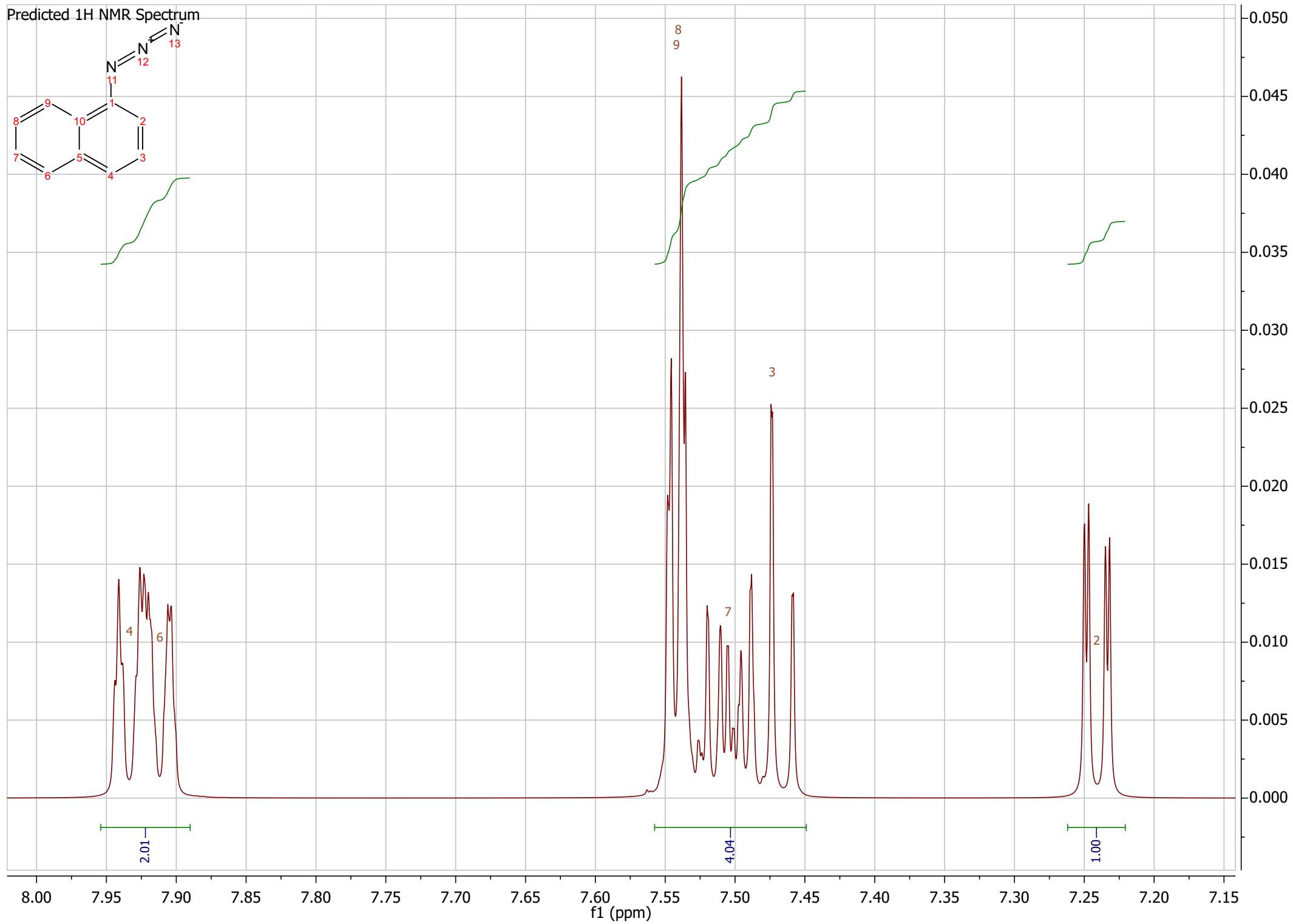
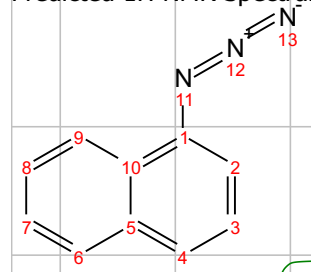
KBS23-2 F5-9.1.fid
Mail Data/Notify to kbur3804@uni.sydney.edu.au
Unikey kbur3804
PROTON CDCI3 {D:\NMRDATA\iconnmr\20230131} {SHARED\nmrvisitor} 18



KBS23-2 F13-21.1.fid
Mail Data/Notify to kbur3804@uni.sydney.edu.au
Unikey kbur3804
PROTON CDCI3 {D:\NMRDATA\iconnmr\20230131} {SHARED\nmrvisitor} 19



Predicted 1H NMR Spectrum



KBS23-2 F13-21.1.fid
Mail Data/Notify to kbur3804@uni.sydney.edu.au
Unikey kbur3804
PROTON CDCl3 {D:\NMRDATA\iconnmr\20230131} {SHARED\nmrvisitor} 19 4

KBS23-2 F5-9.1.fid
Mail Data/Notify to kbur3804@uni.sydney.edu.au
Unikey kbur3804
PROTON CDCl3 {D:\NMRDATA\iconnmr\20230131} {SHARED\nmrvisitor} 18 3

KBS23-2 F3-4.1.fid
Mail Data/Notify to kbur3804@uni.sydney.edu.au
Unikey kbur3804
PROTON CDCl3 {D:\NMRDATA\iconnmr\20230131} {SHARED\nmrvisitor} 12 2

KBS23-2 F2.1.fid
Mail Data/Notify to kbur3804@uni.sydney.edu.au
Unikey kbur3804
PROTON CDCl3 {D:\NMRDATA\iconnmr\20230131} {SHARED\nmrvisitor} 1 1

