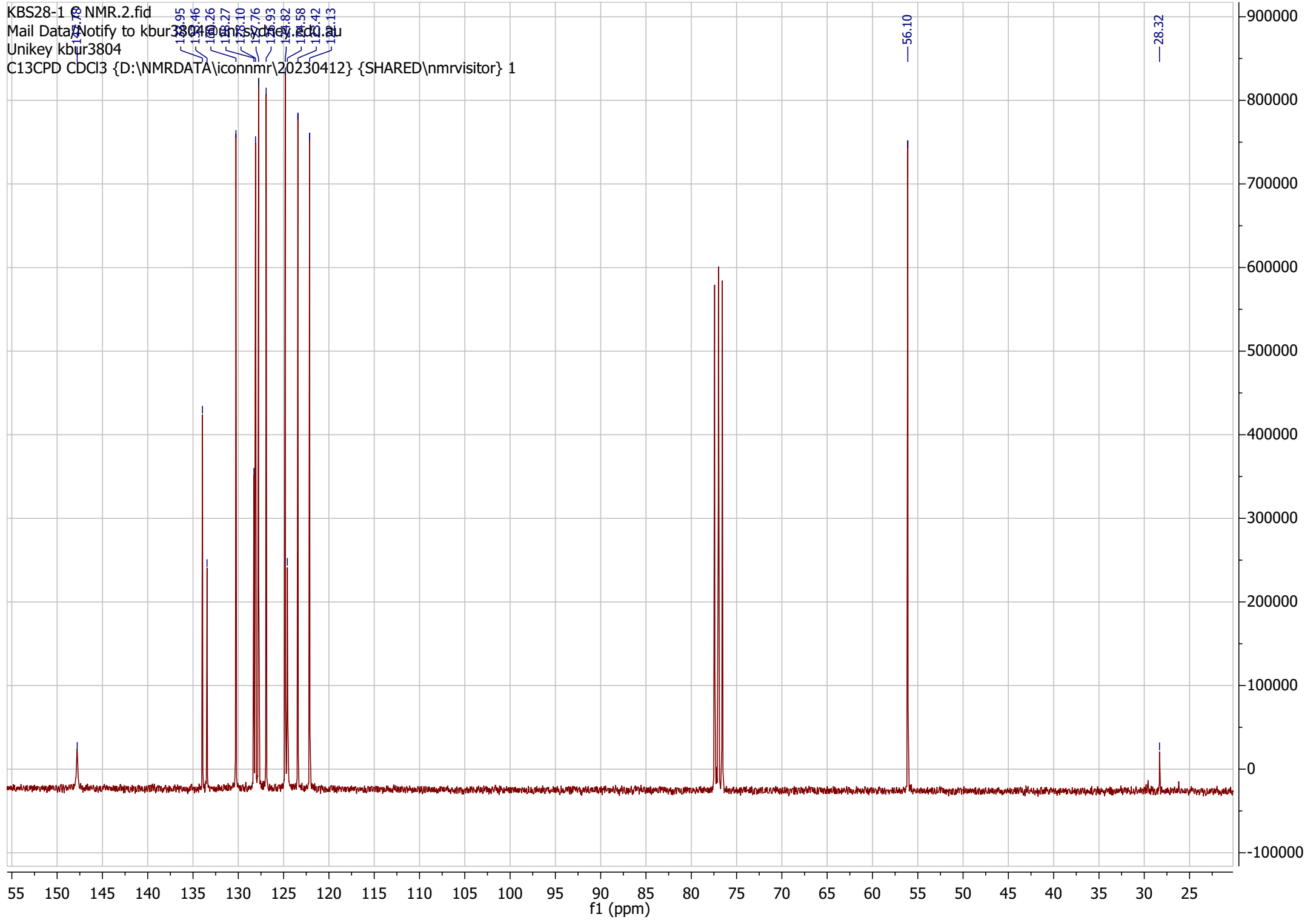
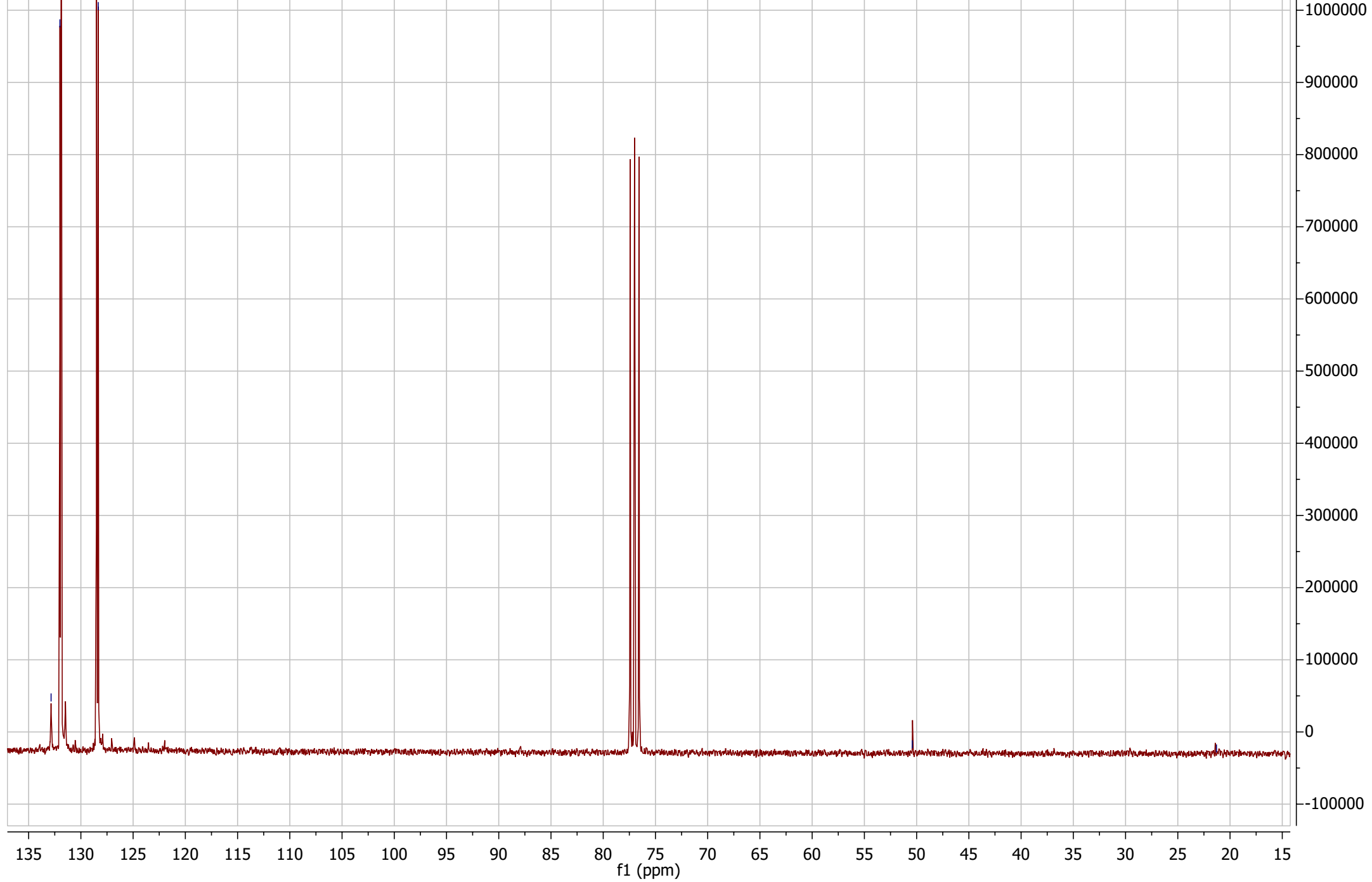


KBS28-1 @ NMR.2.fid
Mail Data Notify to kbur3804@unsw.edu.au
Unikey kbur3804
C13CPD CDCl3 {D:\NMRDATA\iconnmr\20230412} {SHARED\nmrvisitor} 1

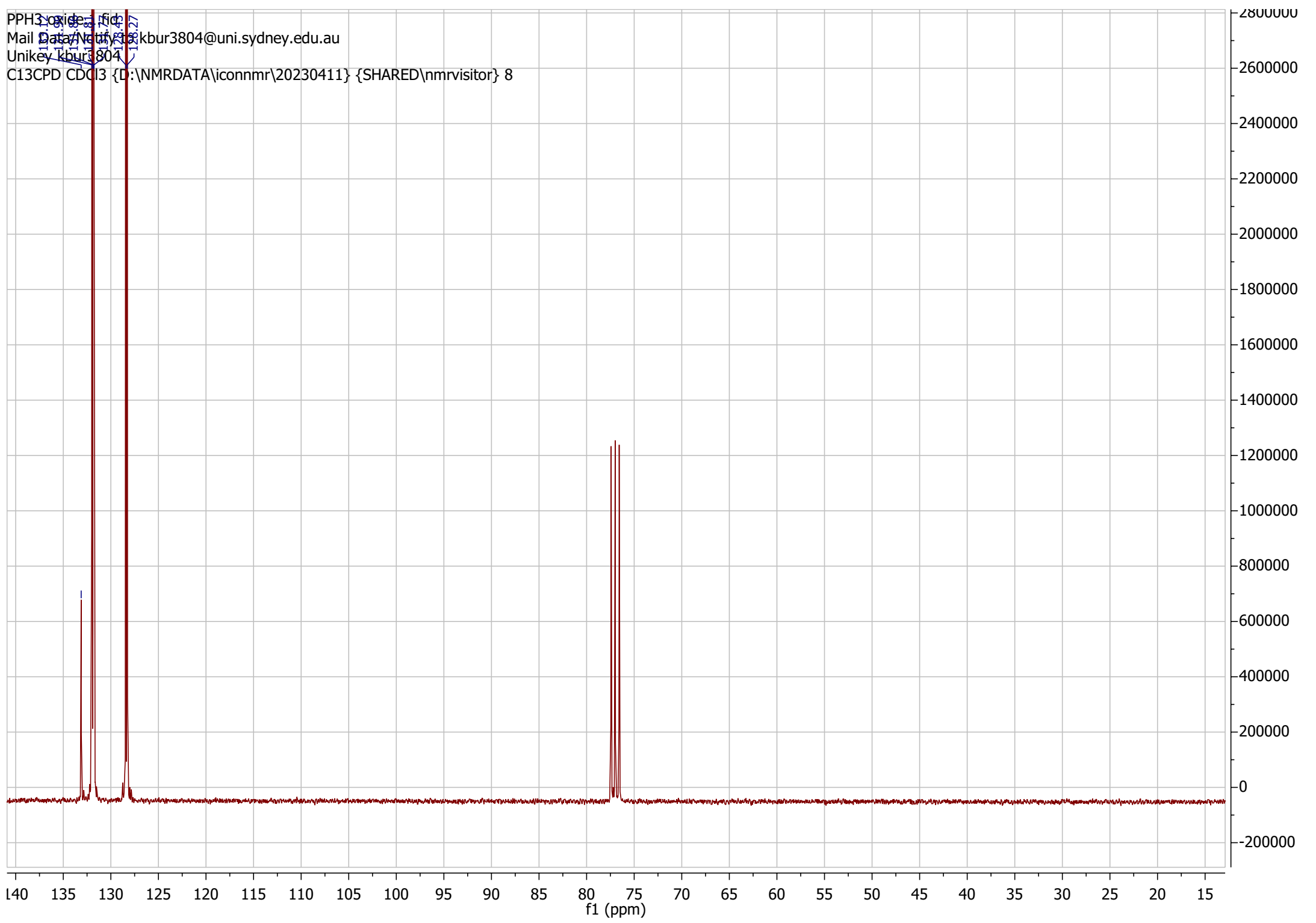


KBS20230208-9 C NMR.1.fid
Mail Data/Notify to kbur3804@uni.sydney.edu.au
Unikey kbur3804

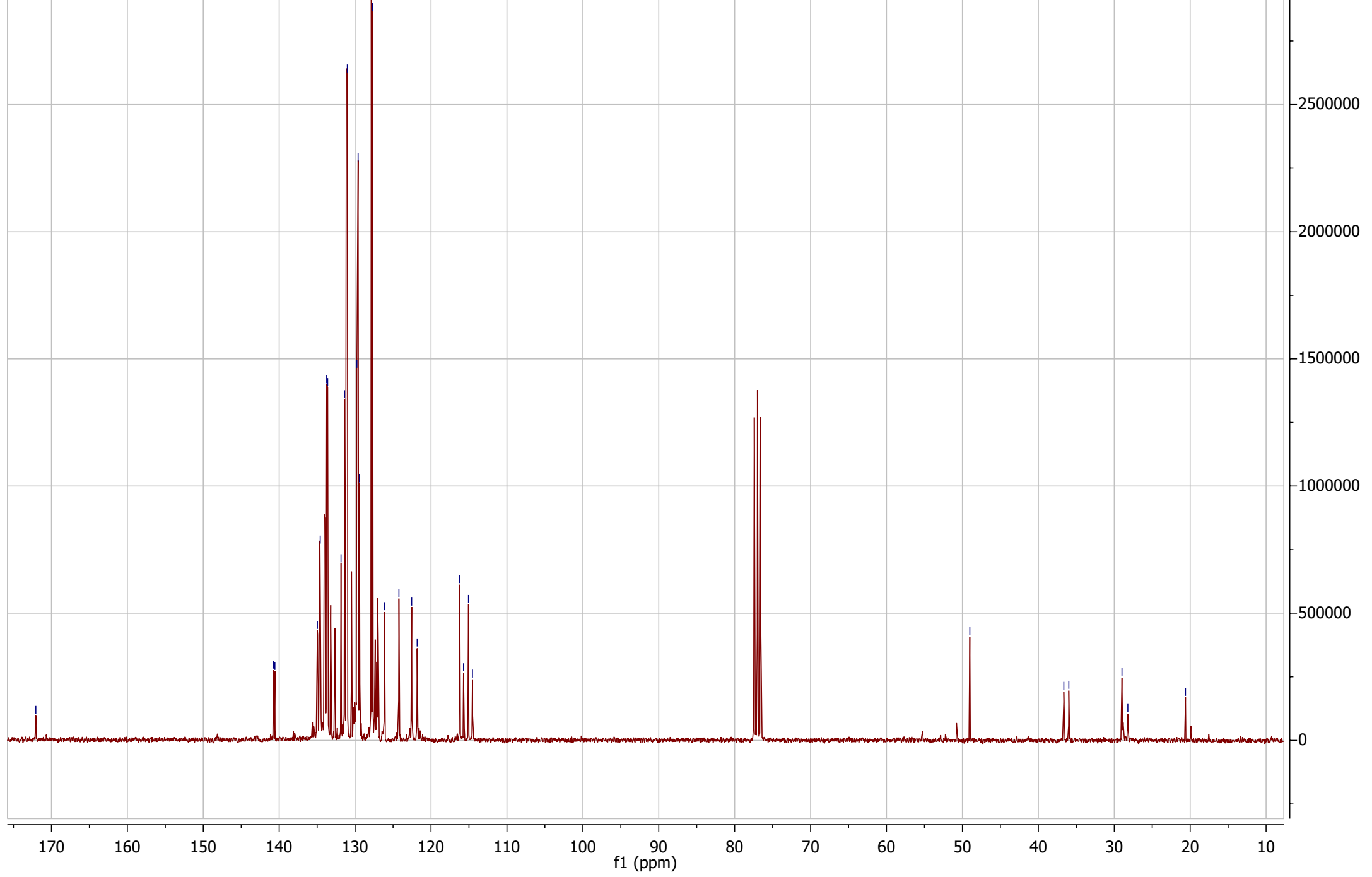
C13CPD CDC13 {D:\NMRDATA\iconnmr\20230411} {SHARED\nmrvisitor} 14



PPH3 oxide.fid
Mail Data Network: kbur3804@uni.sydney.edu.au
Unkey: kbur3804
C13CPD CDCl3 {D:\NMRDATA\iconnmr\20230411} {SHARED\nmrvisitor} 8



KBS29-2 C2 10-16 C NMR 150
Mail Data/Notify to kbur3804@unimelb.edu.au
Unikey kbur3804
C13CPD CDCl3 {D:\NMRDATA\iconnmr\20230411}\{SHARED\nmrvisitor} 20



KBS29-2 C2 F8-9 C NMR.1.fid
Mail Data/Notify to kbur3804@uni.sydney.edu.au
Unikey kbur3804
C13CPD CDCl3 {D:\NMRDATA\iconnmr\20230411} {SHARED\nmrvisitor} 14 4

PPH3 oxide.1.fid
Mail Data/Notify to kbur3804@uni.sydney.edu.au
Unikey kbur3804
C13CPD CDCl3 {D:\NMRDATA\iconnmr\20230411} {SHARED\nmrvisitor} 8 3

KBS29-2 C2 10-16 C NMR.1.fid
Mail Data/Notify to kbur3804@uni.sydney.edu.au
Unikey kbur3804
C13CPD CDCl3 {D:\NMRDATA\iconnmr\20230411} {SHARED\nmrvisitor} 20 2

KBS28-1 C NMR.2.fid
Mail Data/Notify to kbur3804@uni.sydney.edu.au
Unikey kbur3804
C13CPD CDCl3 {D:\NMRDATA\iconnmr\20230412} {SHARED\nmrvisitor} 1 1

