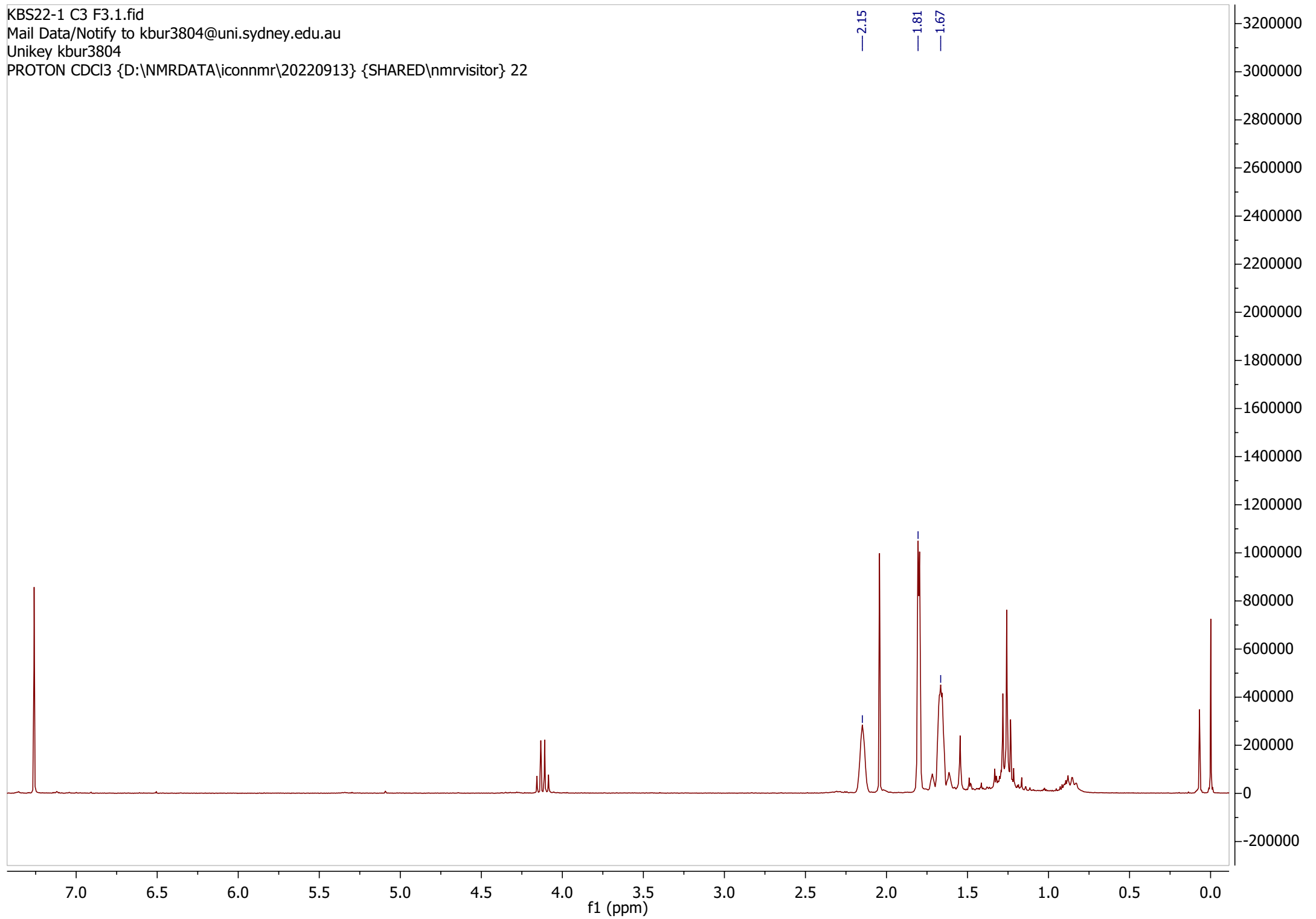
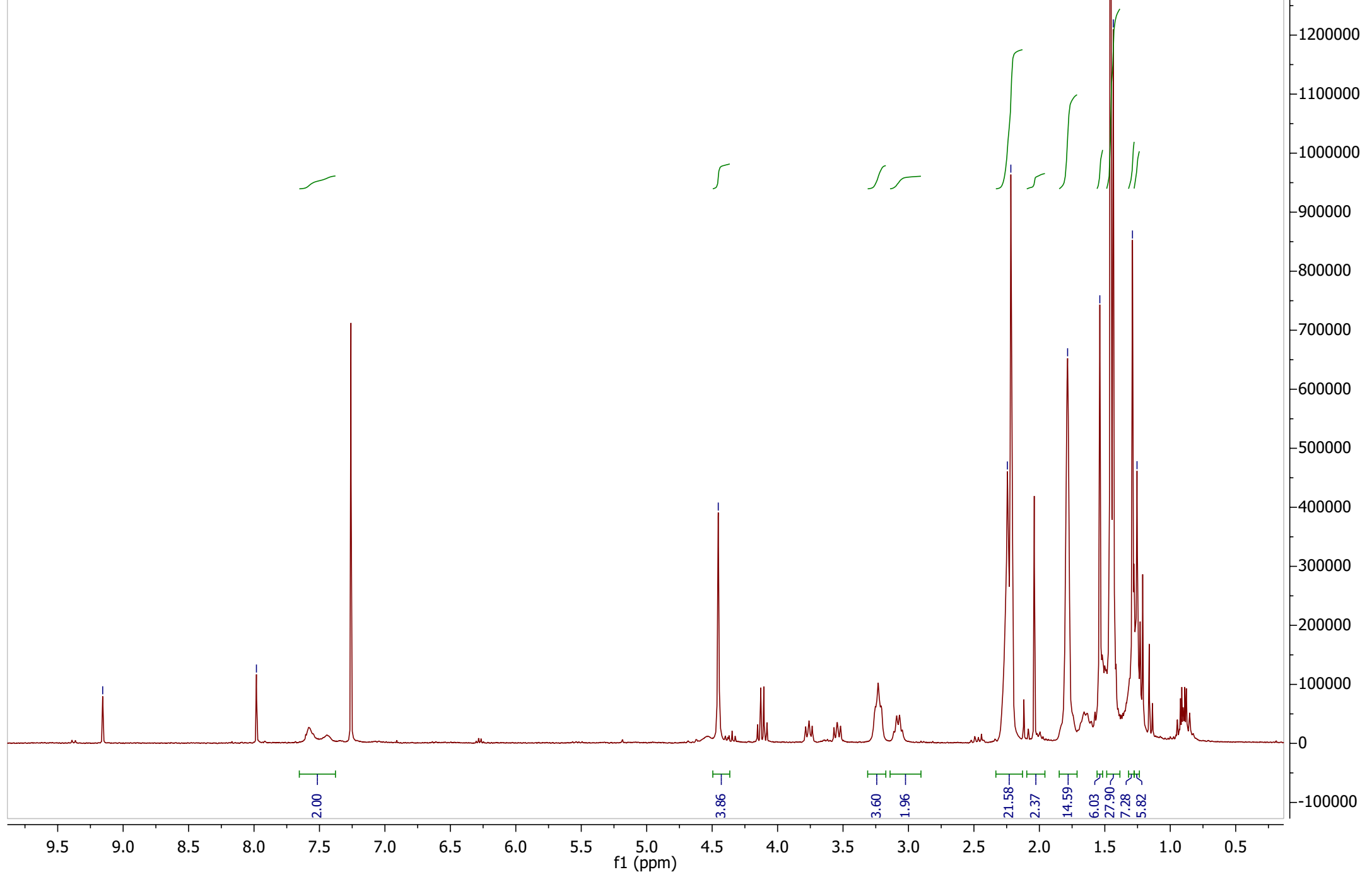


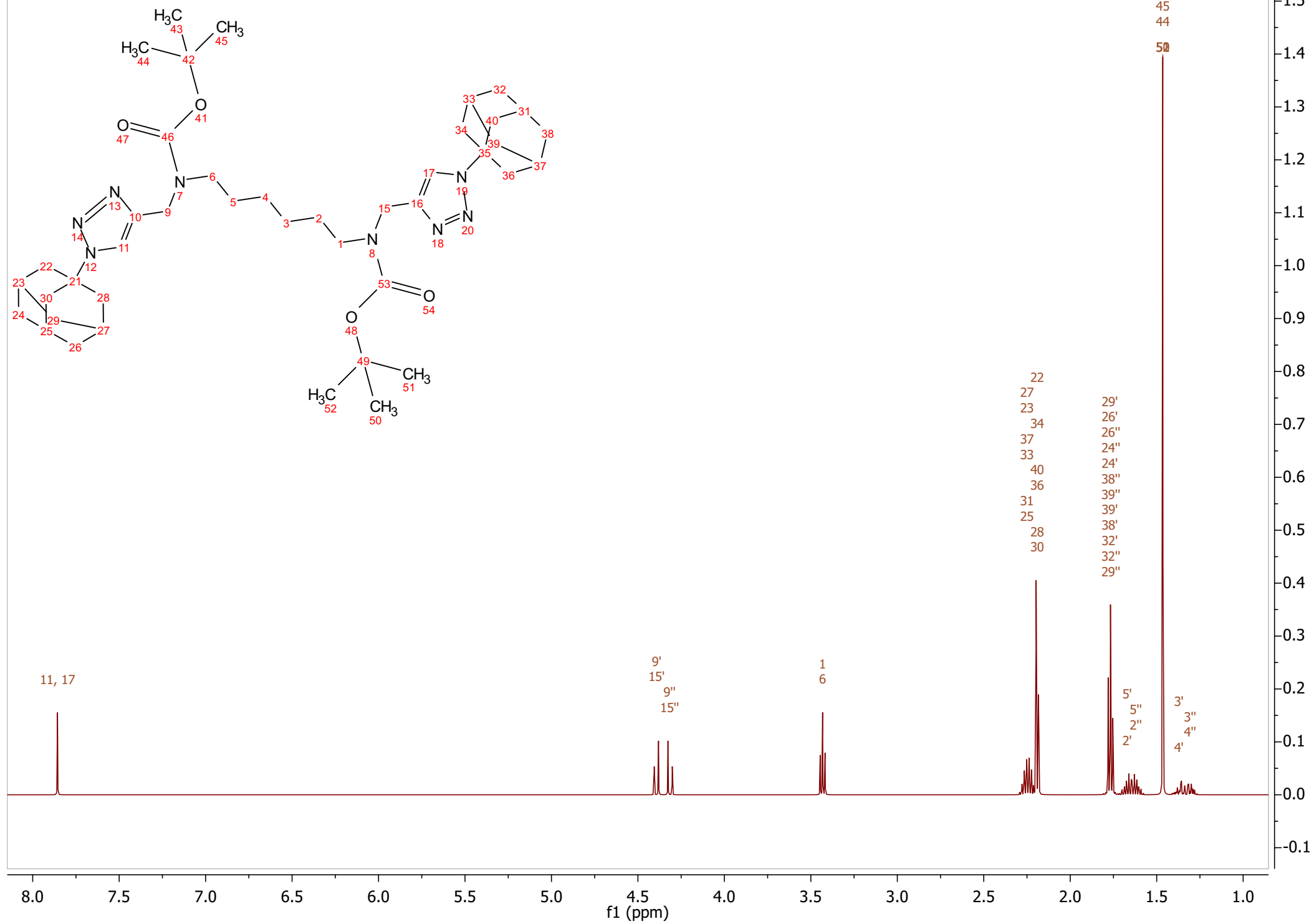
KBS22-1 C3 F3.1.fid
Mail Data/Notify to kbur3804@uni.sydney.edu.au
Unikey kbur3804
PROTON CDCl3 {D:\NMRDATA\iconnmr\20220913} {SHARED\nmrvisitor} 22



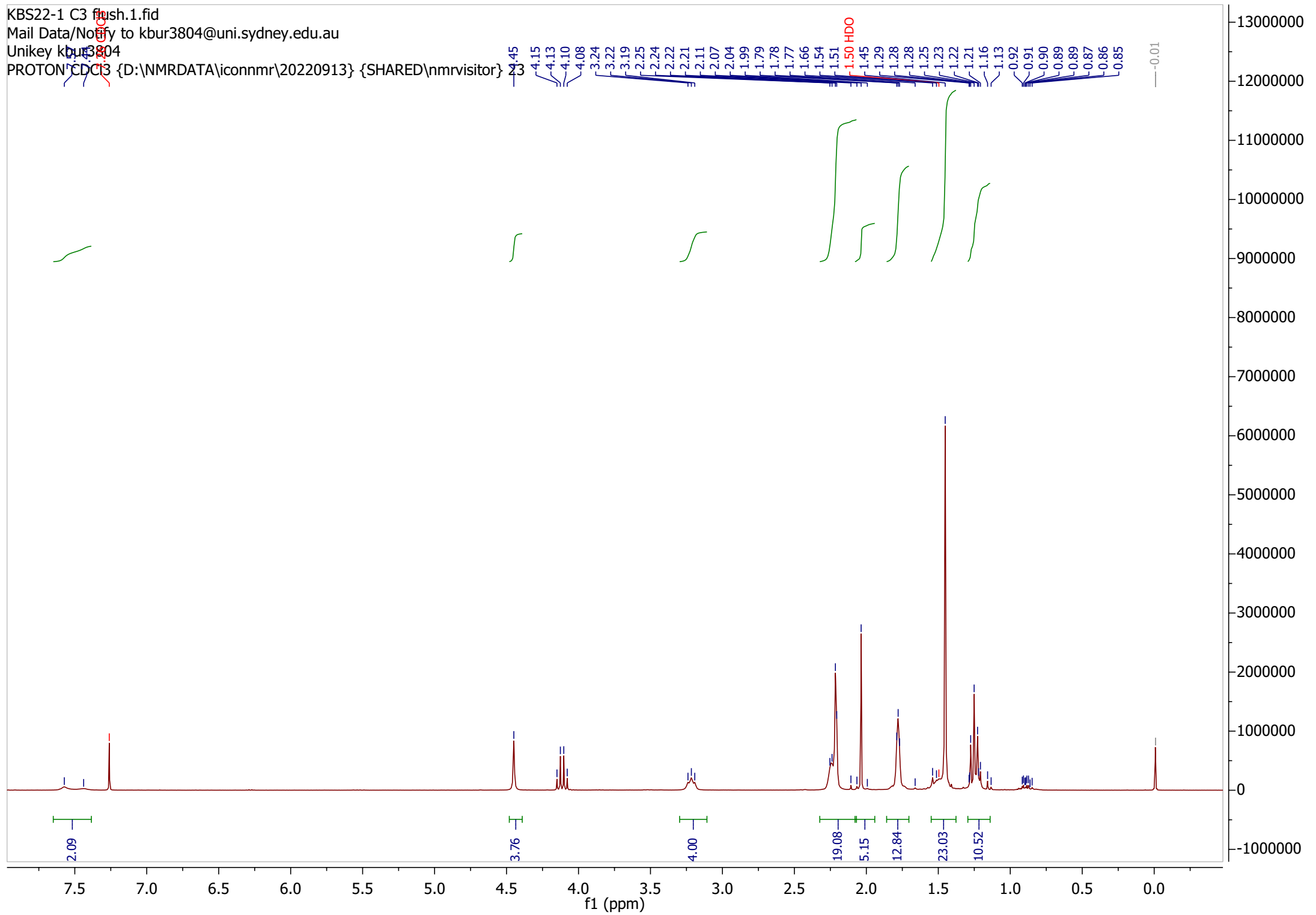
KBS22-1 C3 F20-25.1.fid
Mail Data/Notify to kbur3804@uni.sydney.edu.au
Unikey kbur3804
PROTON CDCI3 {D:\NMRDATA\iconnmr\20220913} {SHARED\nmrvisitor} 21



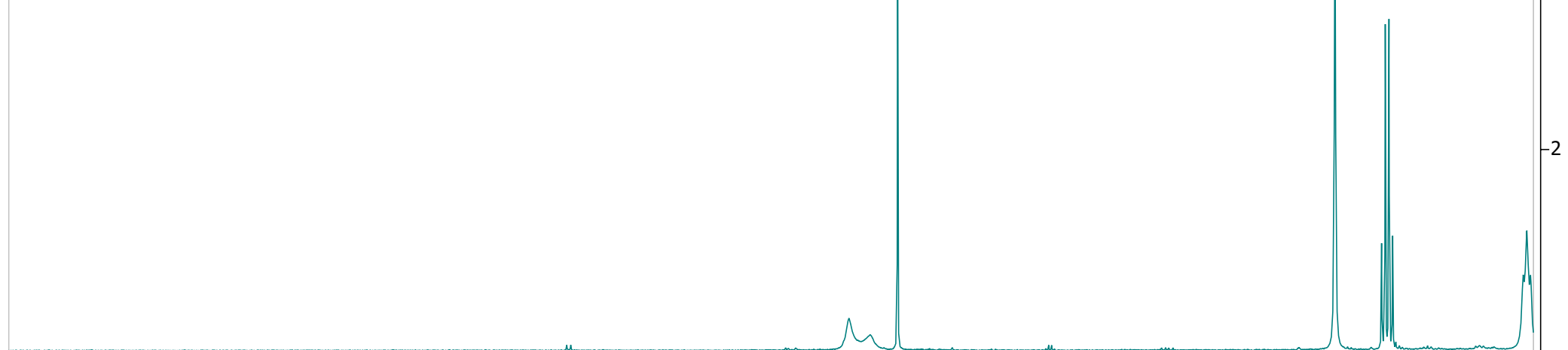
Predicted 1H NMR Spectrum



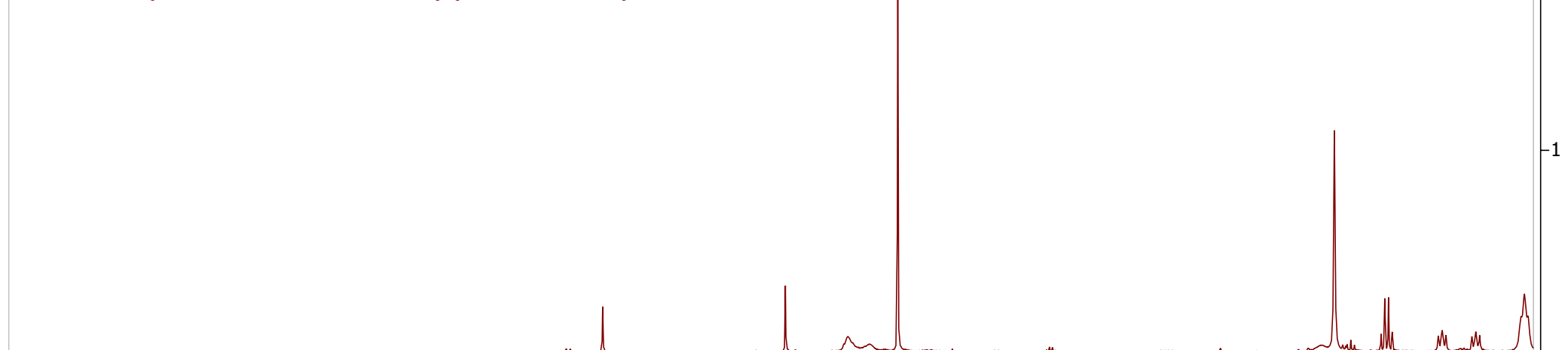
KBS22-1 C3 flush.1.fid
Mail Data/Notify to kbur3804@uni.sydney.edu.au
Unikey kbur3804
PROTON CDCl3 {D:\NMRDATA\iconnmr\20220913} {SHARED\nmrvisitor}



KBS22-1 C3 flush.1.fid
Mail Data/Notify to kbur3804@uni.sydney.edu.au
Unikey kbur3804
PROTON CDCl3 {D:\NMRDATA\iconnmr\20220913} {SHARED\nmrvisitor} 23



KBS22-1 C3 F20-25.1.fid
Mail Data/Notify to kbur3804@uni.sydney.edu.au
Unikey kbur3804
PROTON CDCl3 {D:\NMRDATA\iconnmr\20220913} {SHARED\nmrvisitor} 21



12.5 12.0 11.5 11.0 10.5 10.0 9.5 9.0 8.5 8.0 7.5 7.0 6.5 6.0 5.5 5.0 4.5 4.0 3.5
f1 (ppm)

KBS22-1 C3 F20-25.1.fid
Mail Data/Notify to kbur3804@uni.sydney.edu.au
Unikey kbur3804
PROTON CDCl3 {D:\NMRDATA\iconnmr\20220913} {SHARED\nmrvisitor} 21

