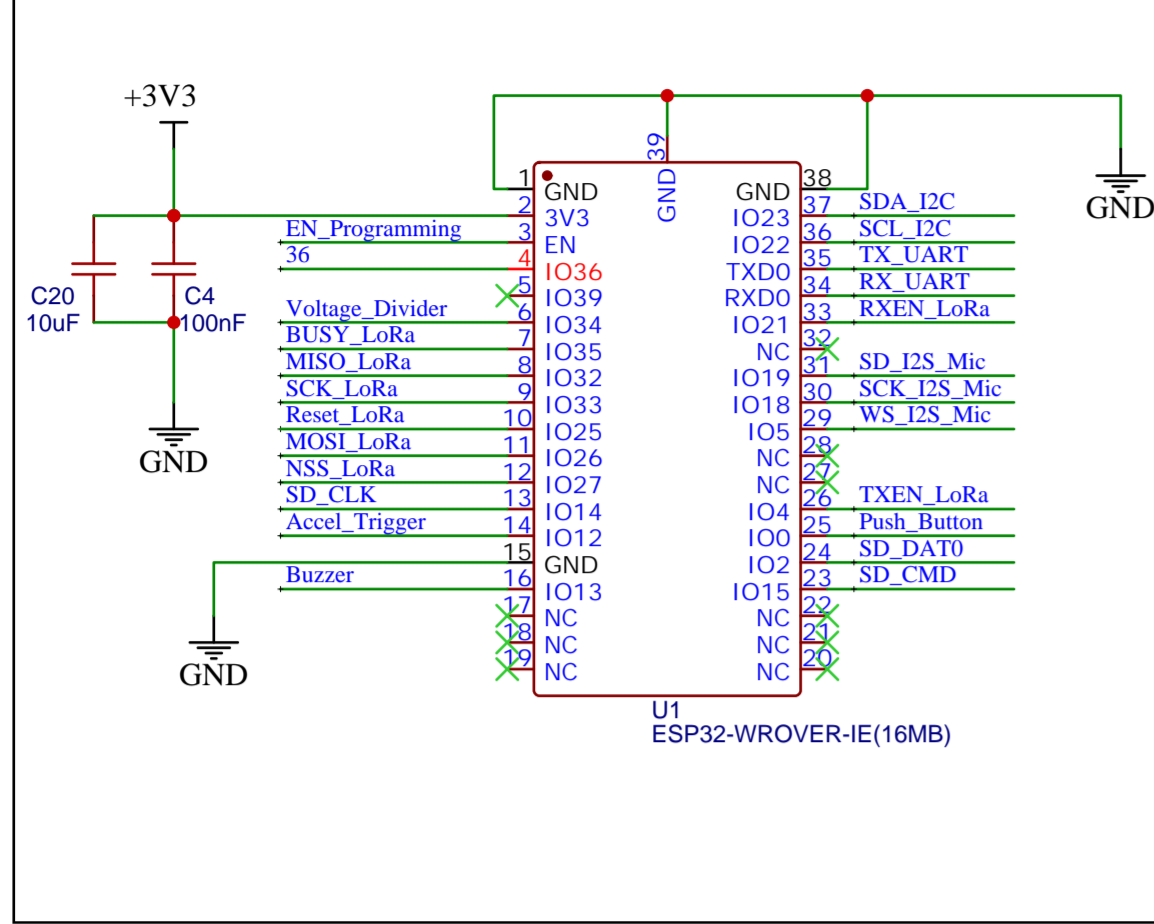
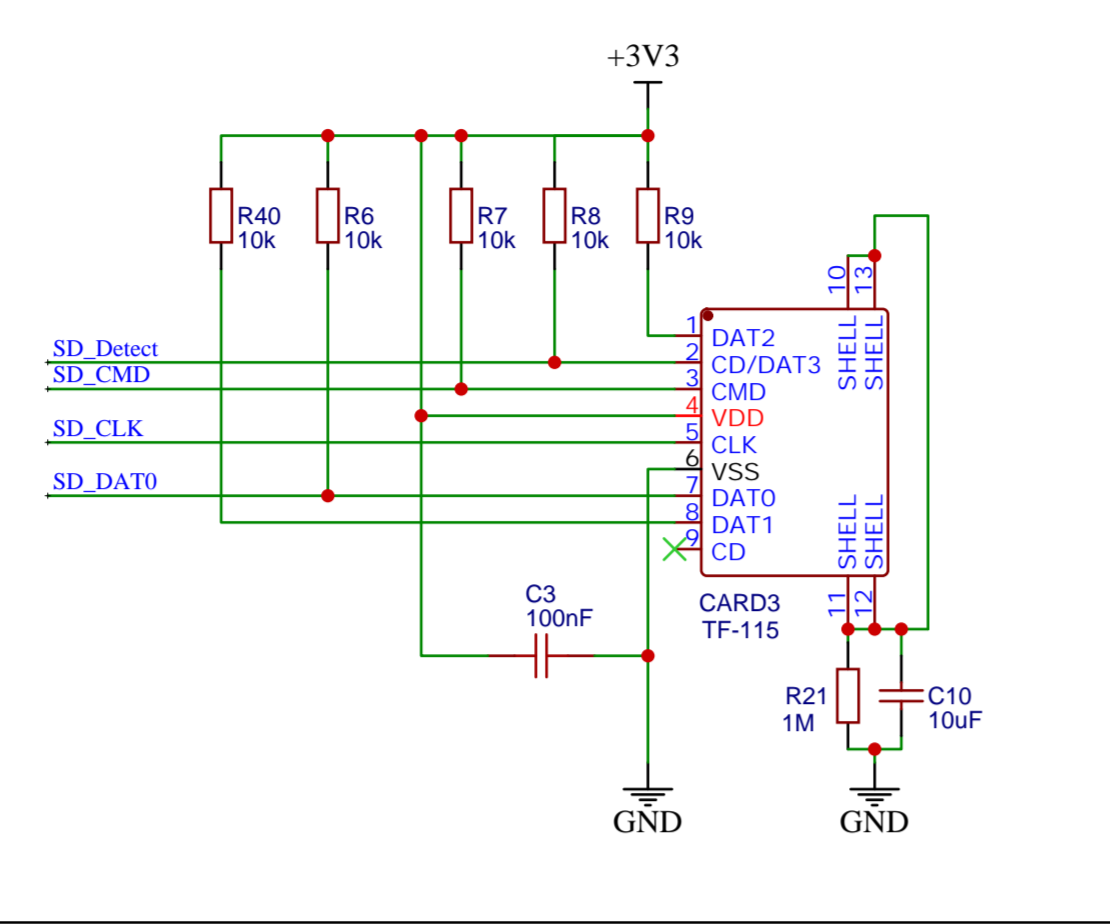


ELOC 3.3

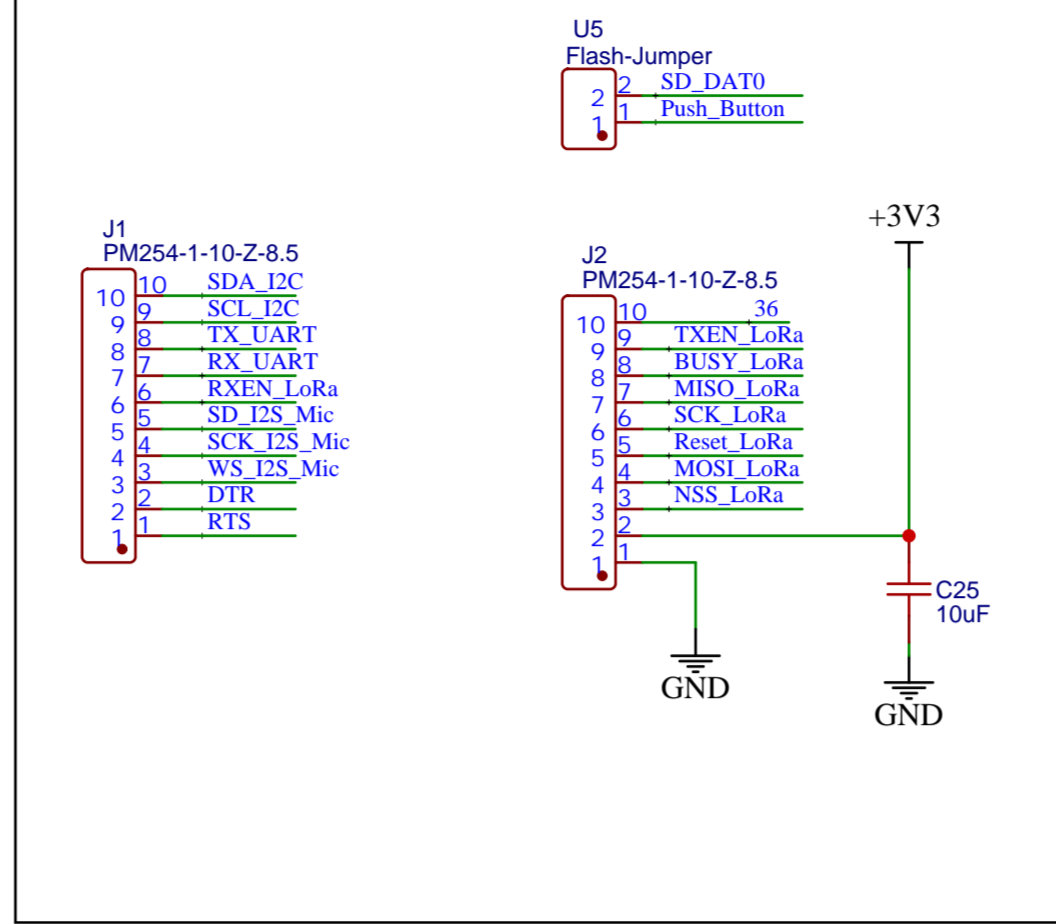
ESP32 MODULE



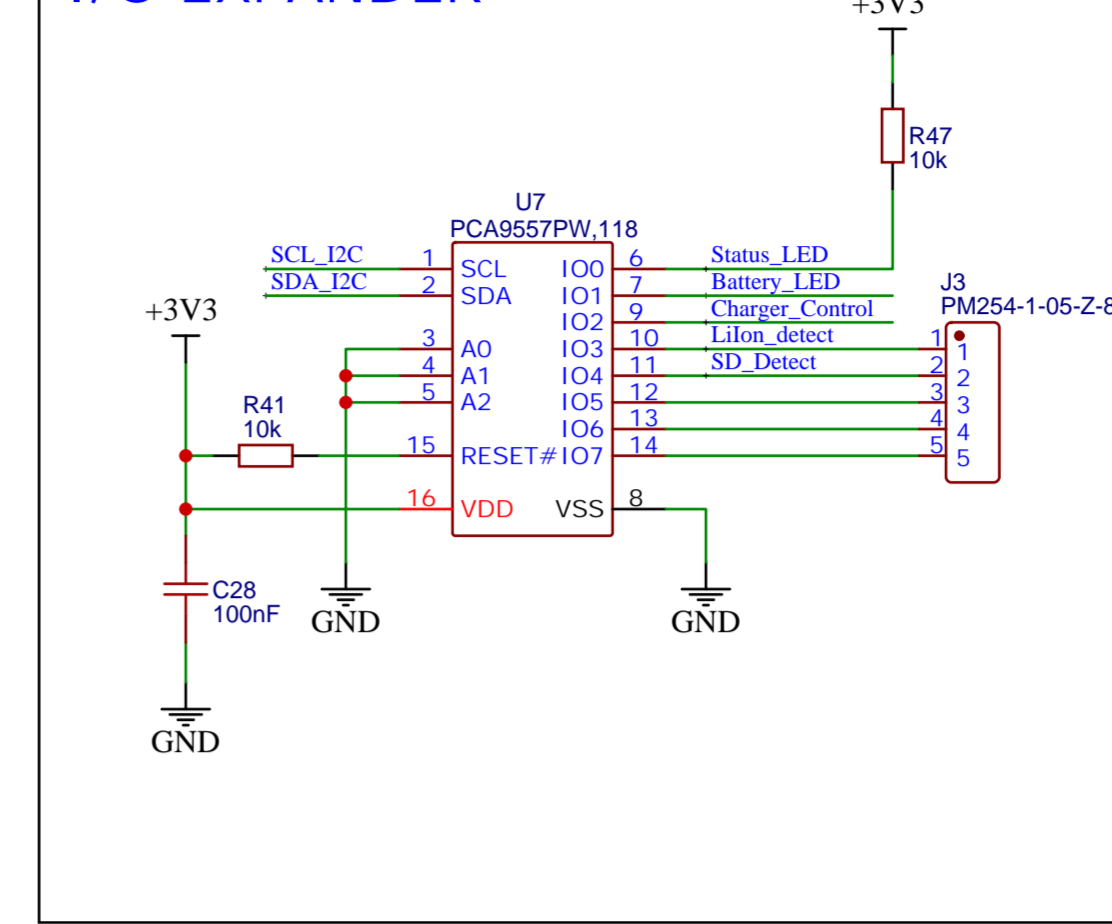
SD CARD - SDIO



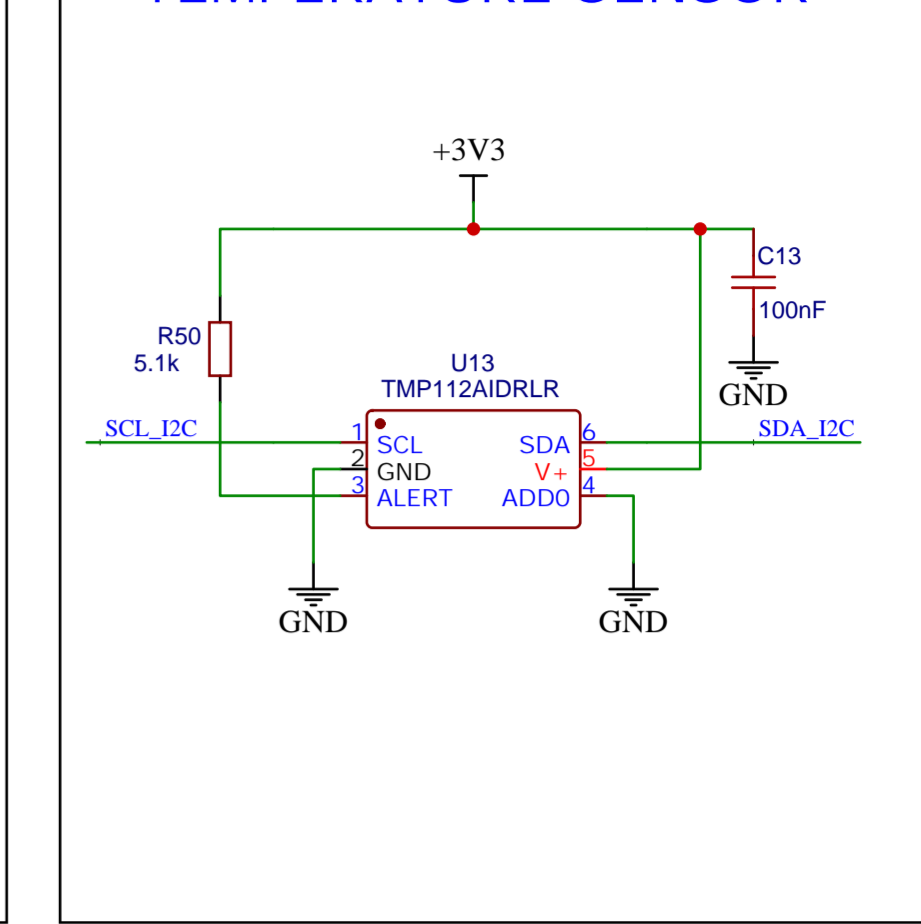
PIN HEADERS



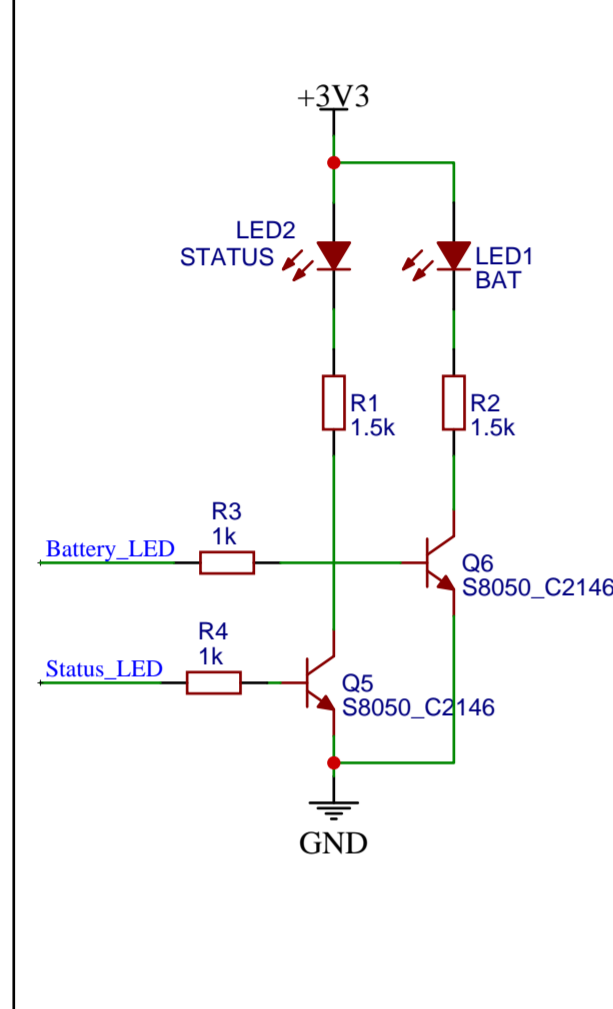
I/O EXPANDER



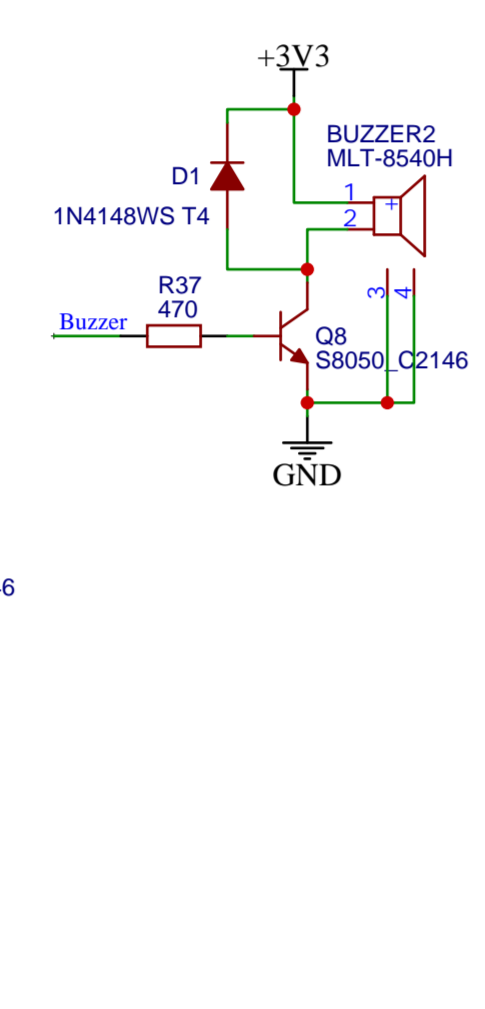
TEMPERATURE SENSOR



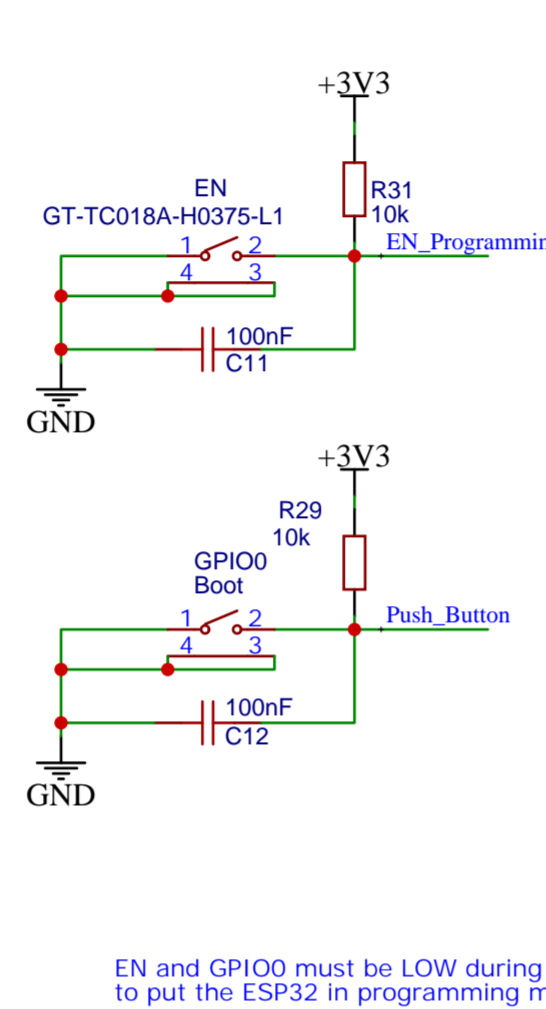
LEDs



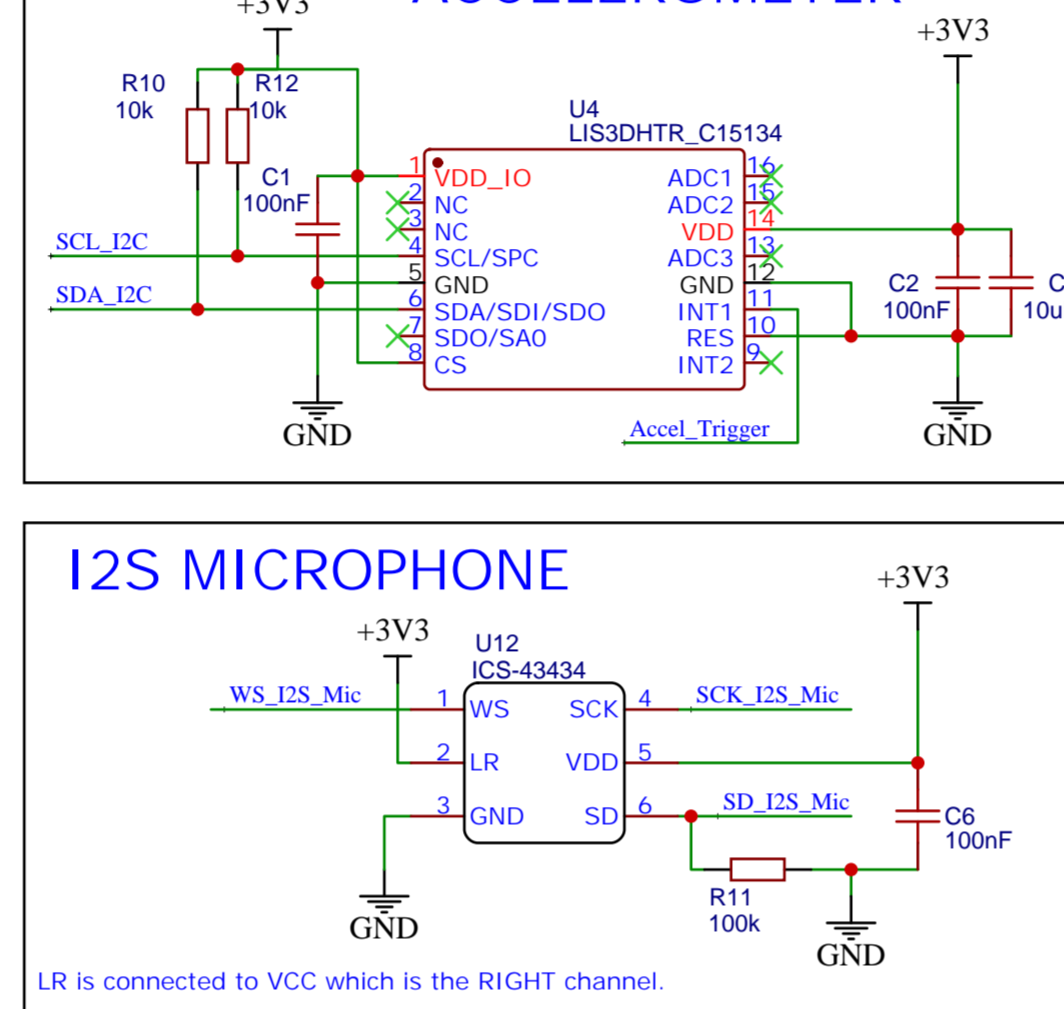
Buzzer



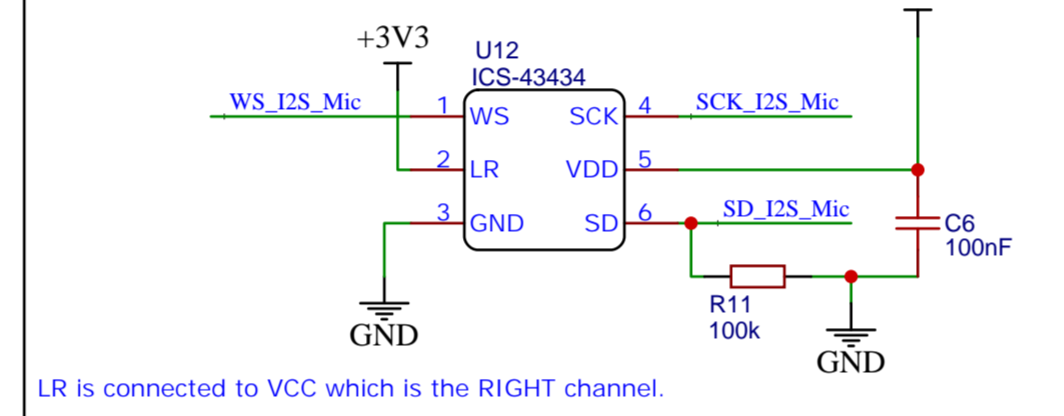
Push Buttons



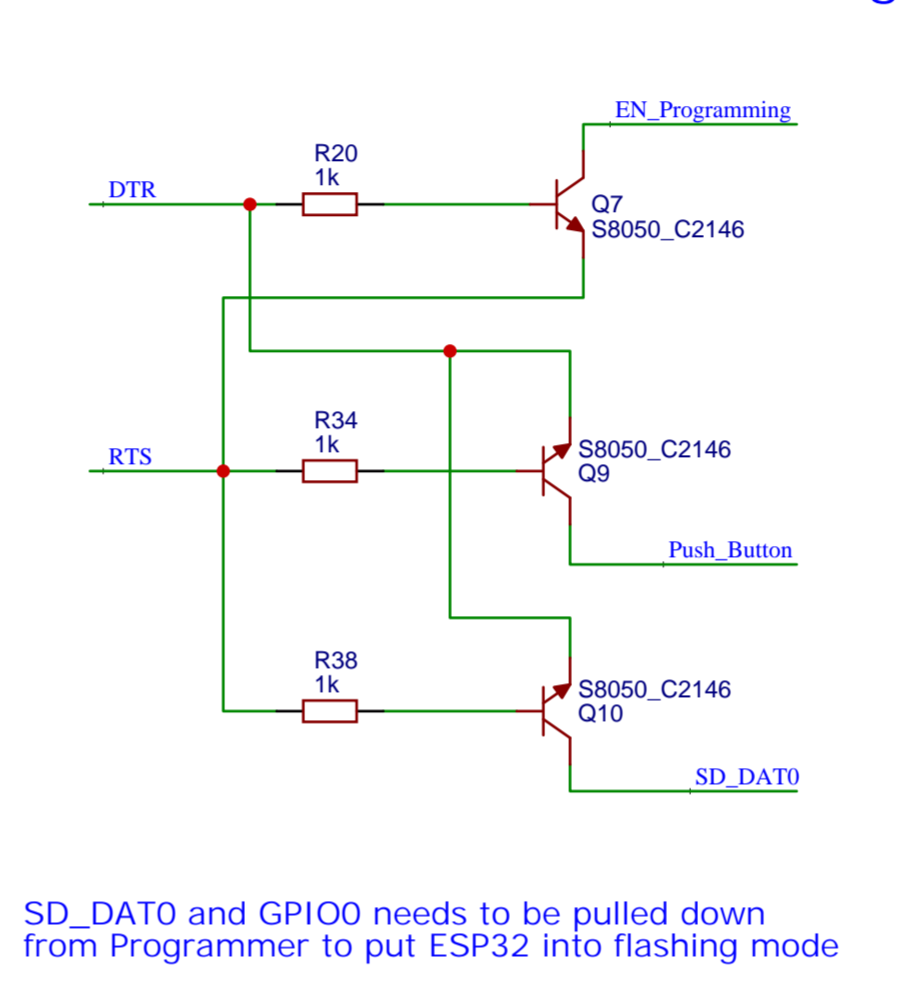
ACCELEROMETER



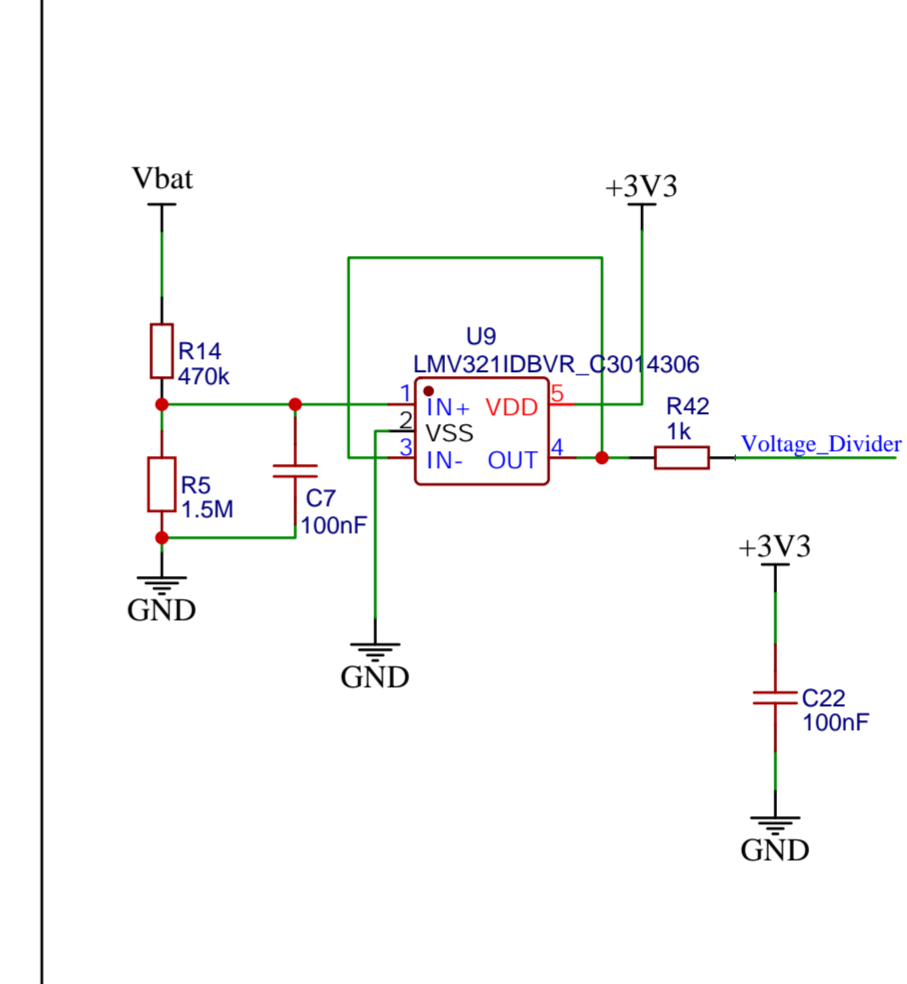
I2S MICROPHONE



UART RESET LOGIC - Flashing

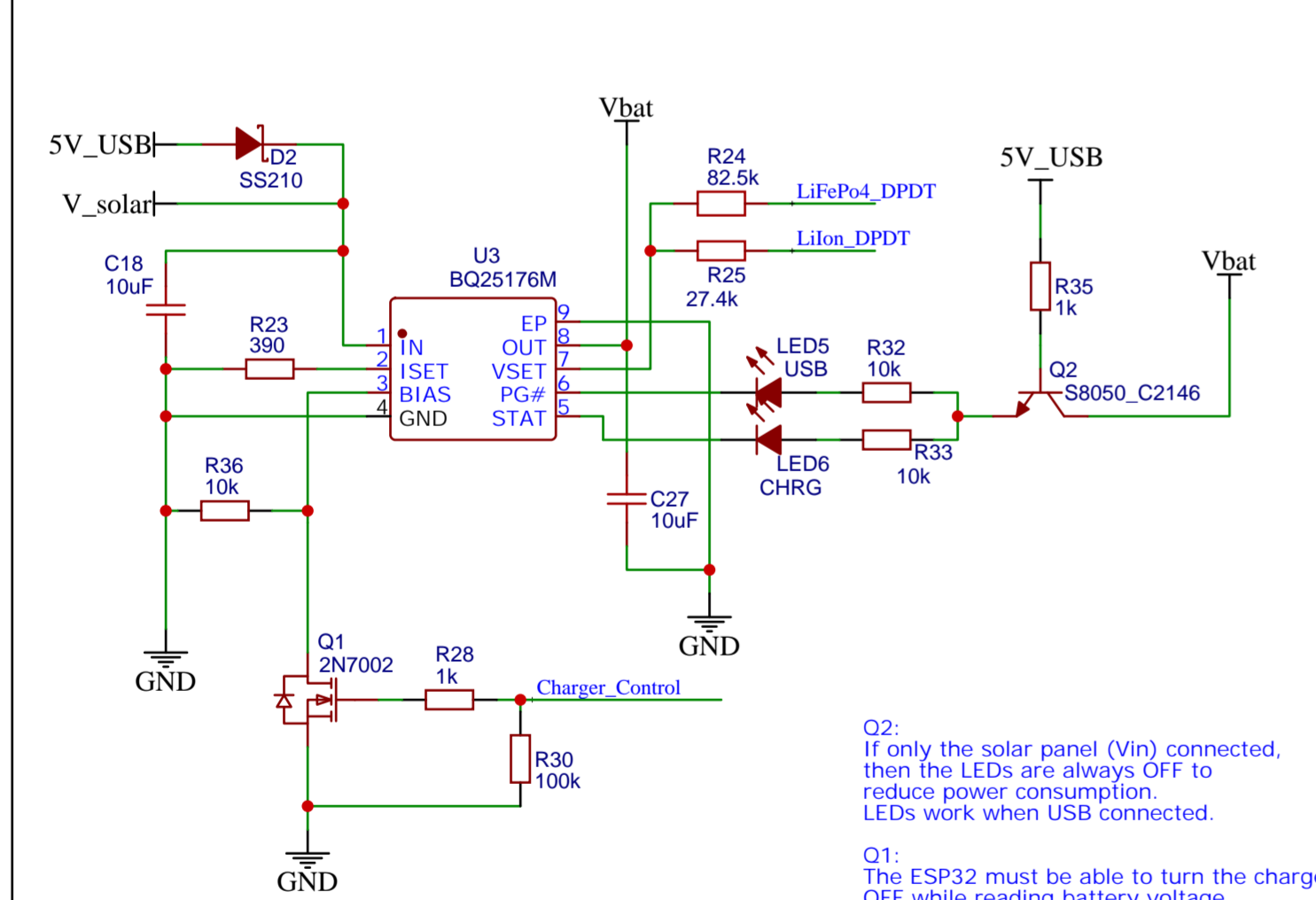


VOLTAGE DIVIDER

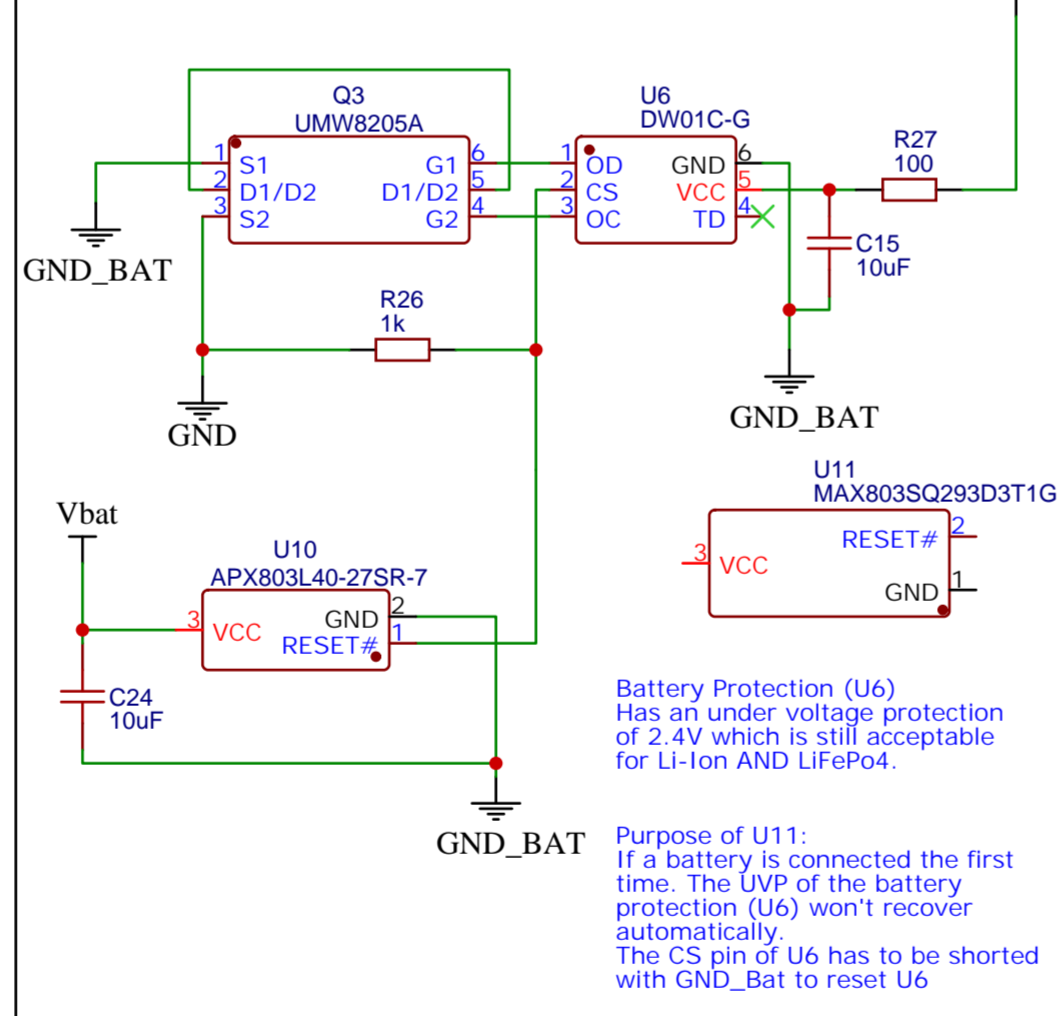


BATTERY MANAGEMENT

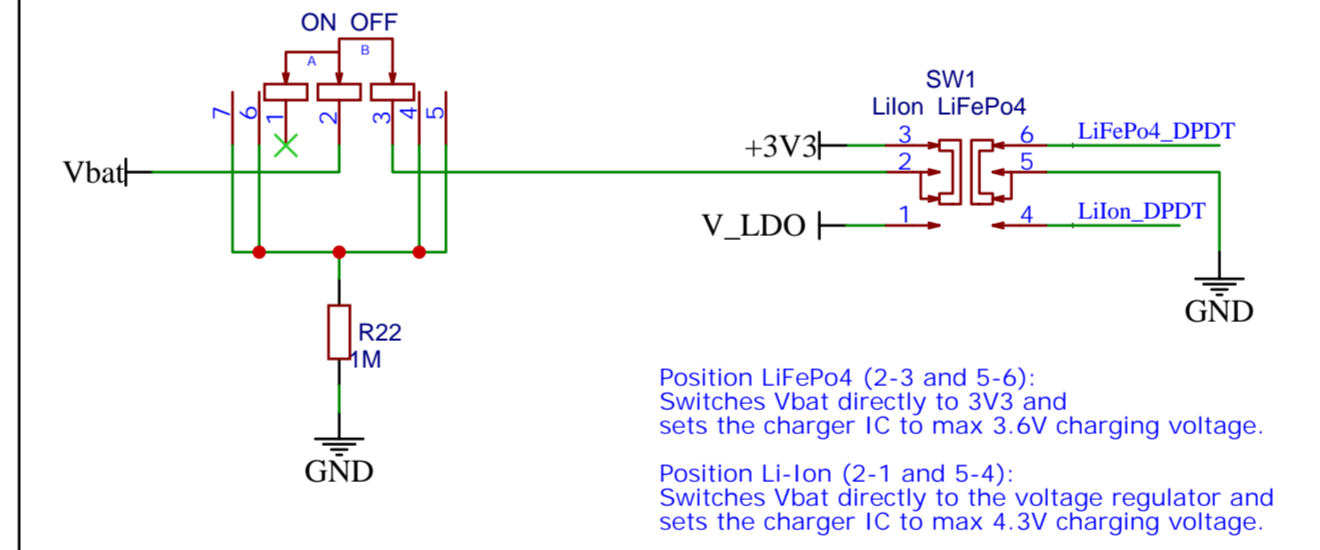
BATTERY CHARGER



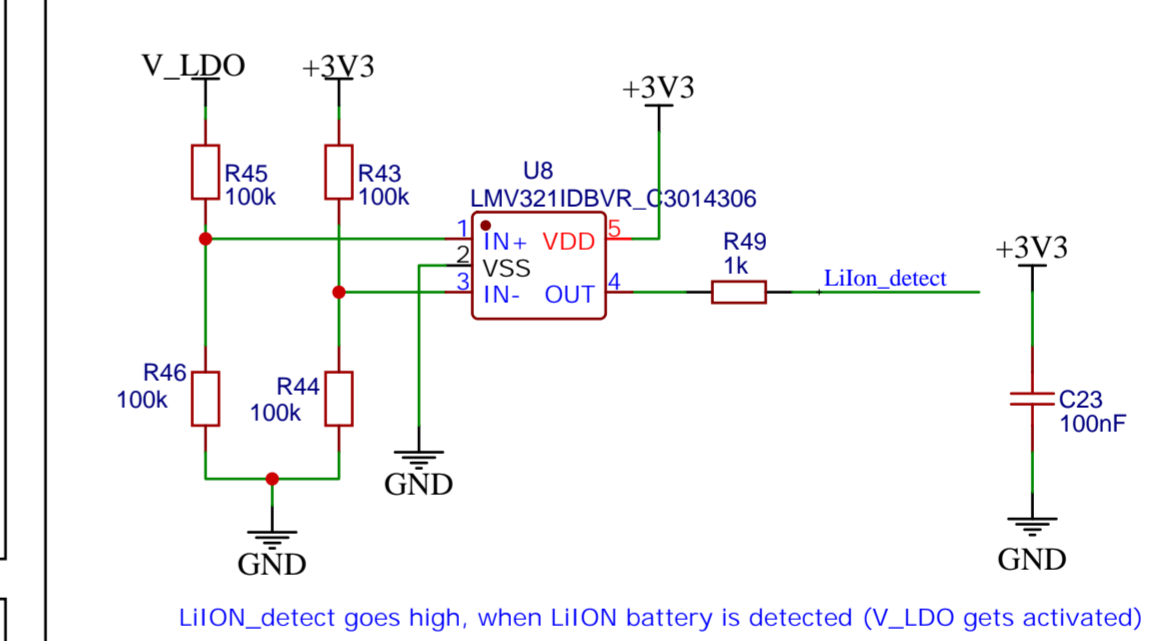
BATTERY PROTECTION



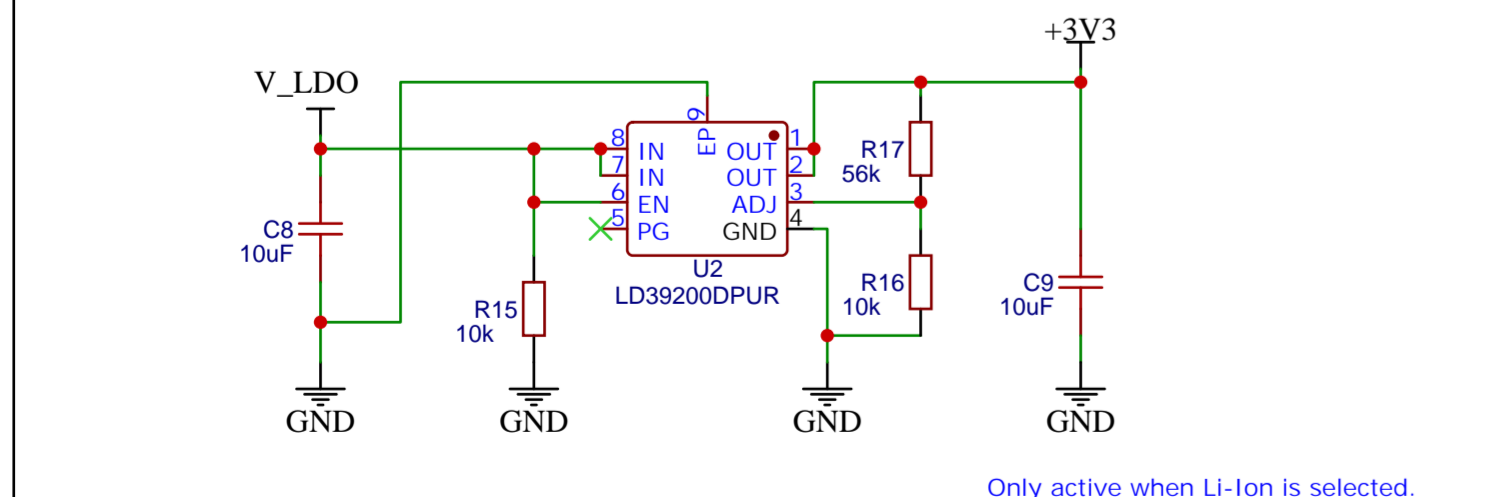
ON/OFF and BATTERY SWITCH (LiFePo4 / Li-Ion)



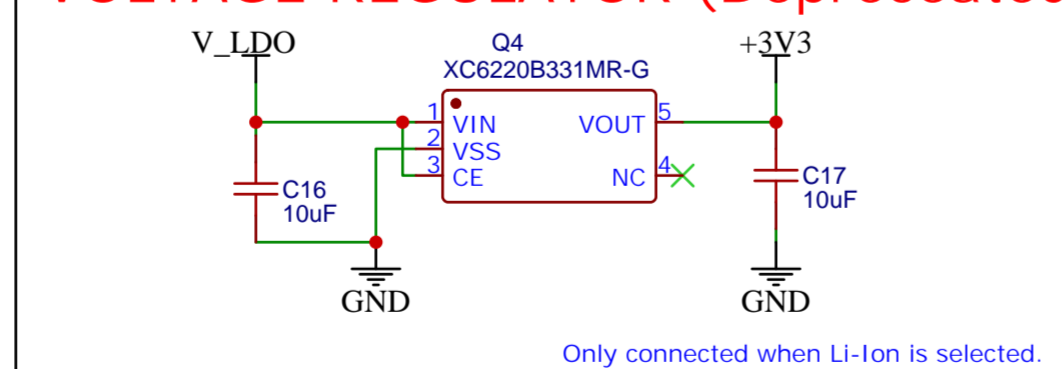
BATTERY TYPE DETECTION



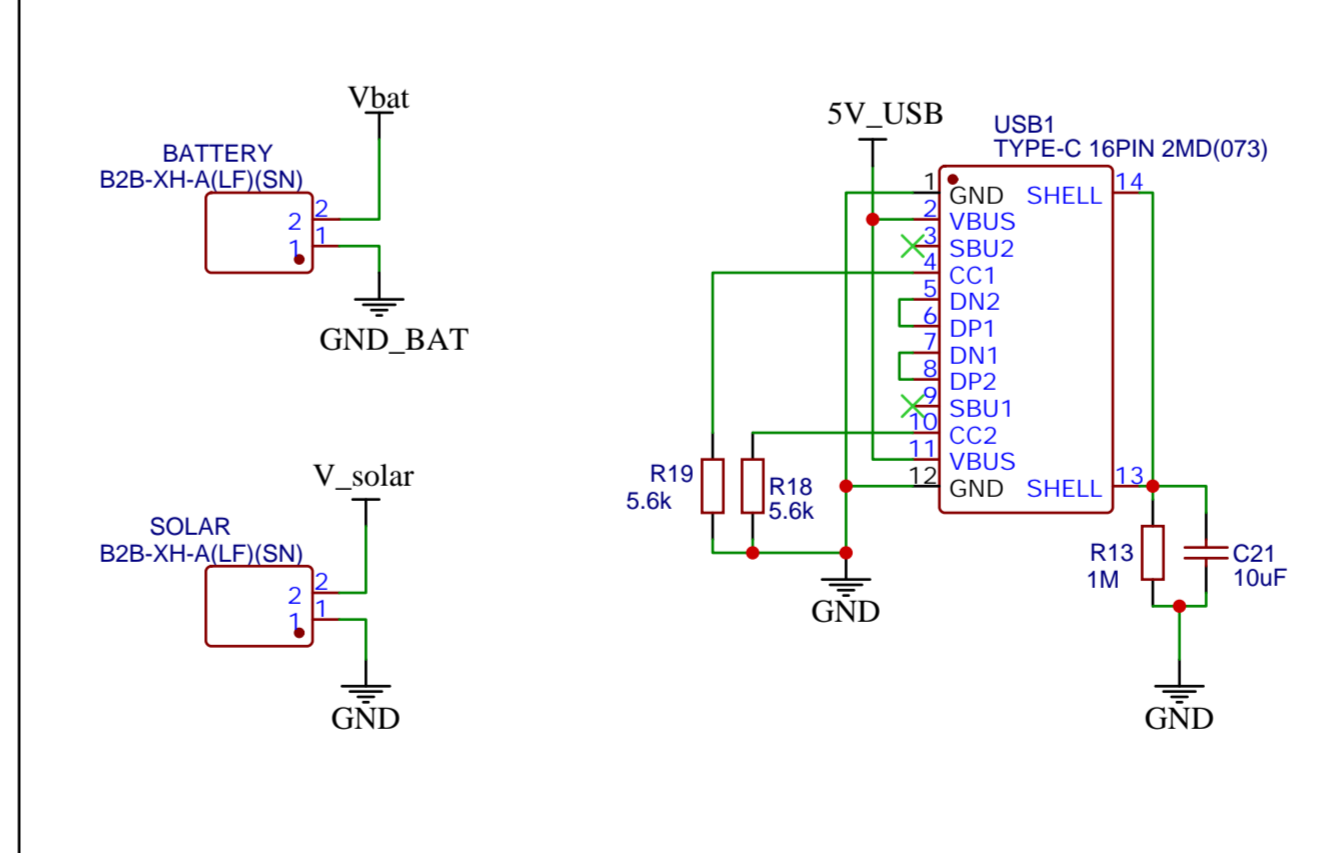
VOLTAGE REGULATOR (NEW)



VOLTAGE REGULATOR (Deprecated)



CONNECTORS



Notes:
Charger IC has overvoltage protection for LiFePo and Li-ion (selectable via DPDT switch).
The charger protection DW01 has over current protection and undervoltage which triggers at 2.4V.
That works for LiFePo4 AND Li-Ion.