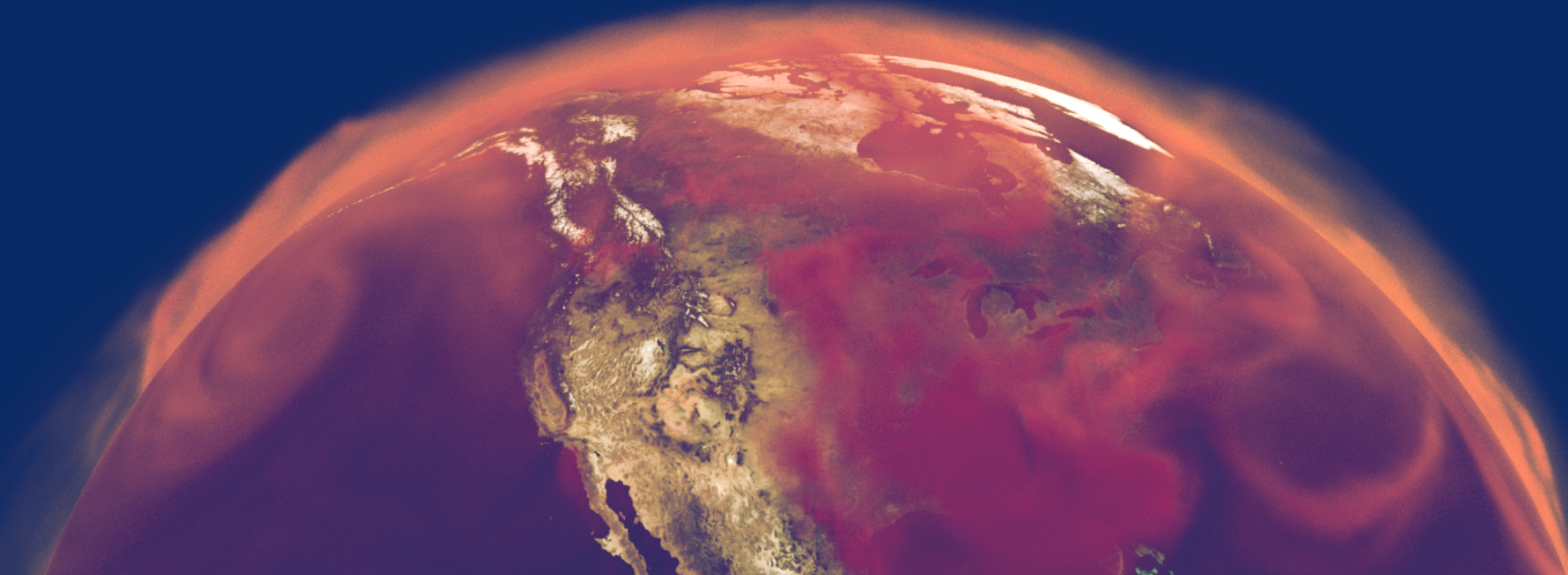
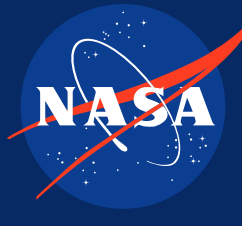


U.S. Greenhouse Gas Center

Uniting Data and Technology to Empower Tomorrow's Climate Solutions



Start exploring scientist-curated GHG datasets on a map environment

The U.S. GHG Center is a one-stop data and analysis system for exploring and analyzing U.S. government and other curated datasets. Three primary demonstration areas are used to organize and introduce the data included in the center for this release.



Anthropogenic GHG Emissions

Human-related carbon dioxide or methane gas emissions from activities in various sectors such as energy, agriculture, waste, and industry.

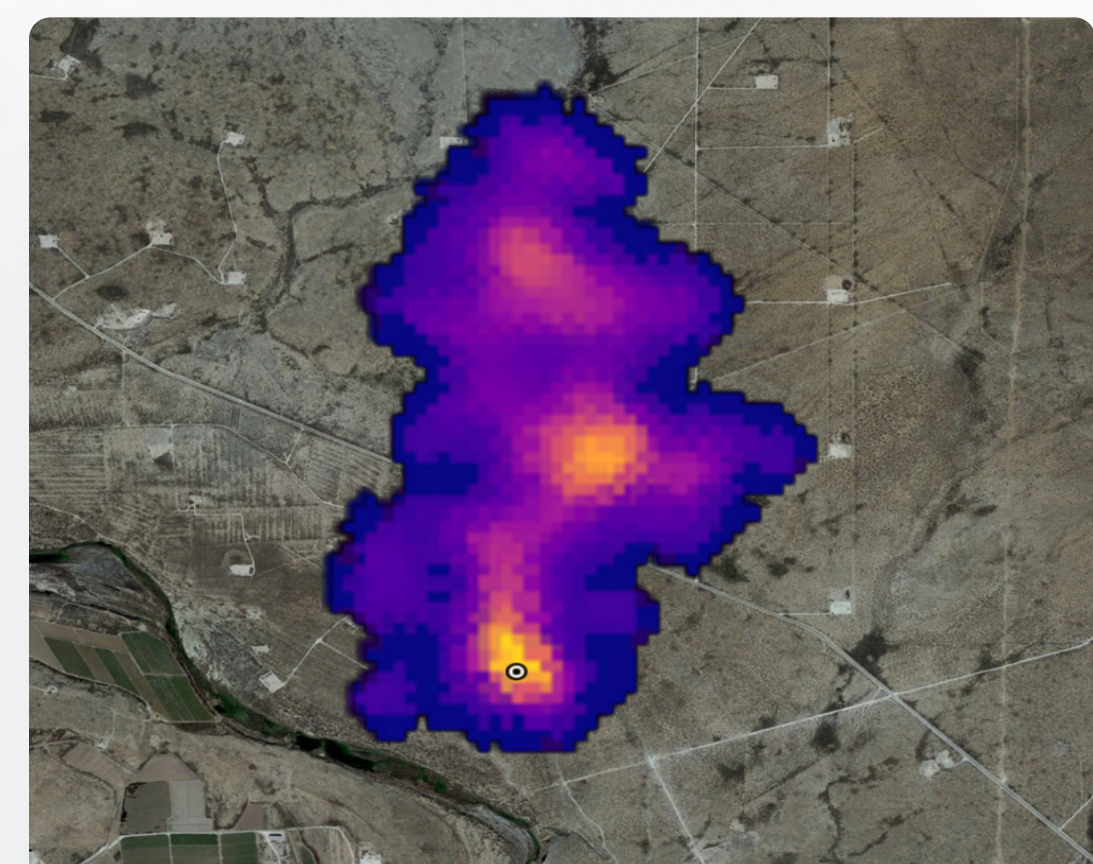
- [Link to the associated Data Story](#)
- [Link to sub-set of relevant datasets](#)



Natural GHG Sources

Land, ocean and atmosphere sources of carbon dioxide or methane gas.

- [Link to the associated Data Story](#)
- [Link to sub-set of relevant datasets](#)



Large GHG Emission Events

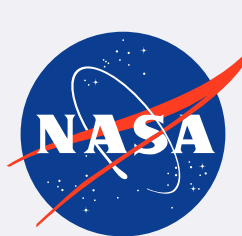
Point source locations and methane plume extent from specific events.

- [Link to the associated Data Story](#)
- [Link to sub-set of relevant datasets](#)

[BROWSE THE GHG DATA CATALOG](#)

Joining forces for a better future

The U.S. Greenhouse Gas Center is a multi-agency effort to extend accessible and integrated GHG data and modeling capabilities from the U.S. government and non-public sources for scalable impact. We are grateful for the support and expertise of our valued partners, including NASA, NIST, NOAA, and EPA.



[LEARN MORE ABOUT US](#)