

ODM Quality Report

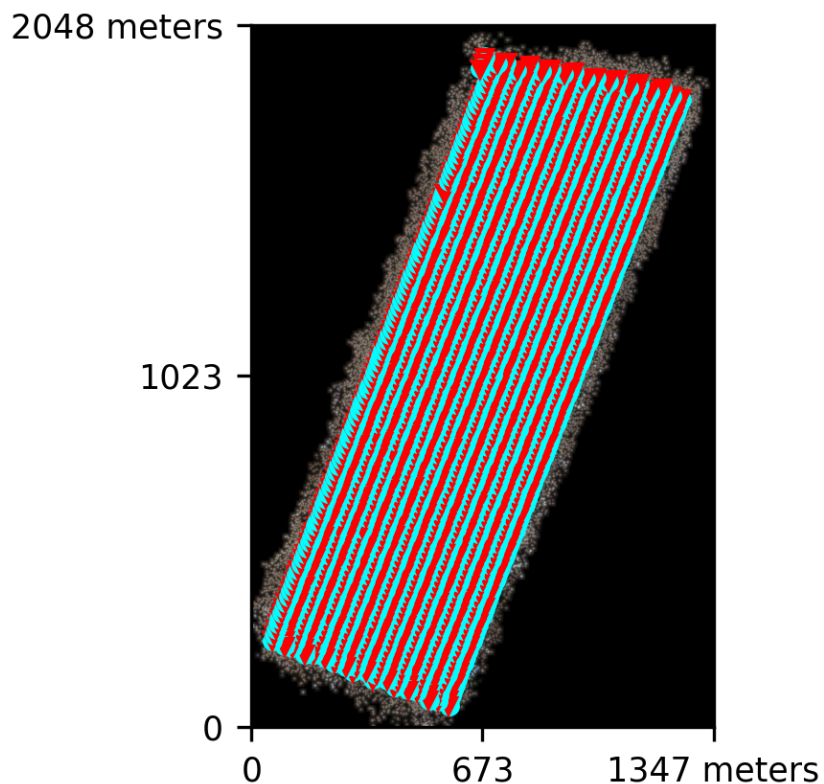
Processed with ODM version 3.3.2

Dataset Summary

Date	21/11/2023 at 11:17:47
Area Covered	2.257304 km ²
Processing Time	15.0h:24.0m:5.0s
Capture Start	01/01/2015 at 00:05:36
Capture End	01/01/2015 at 00:46:54

Processing Summary

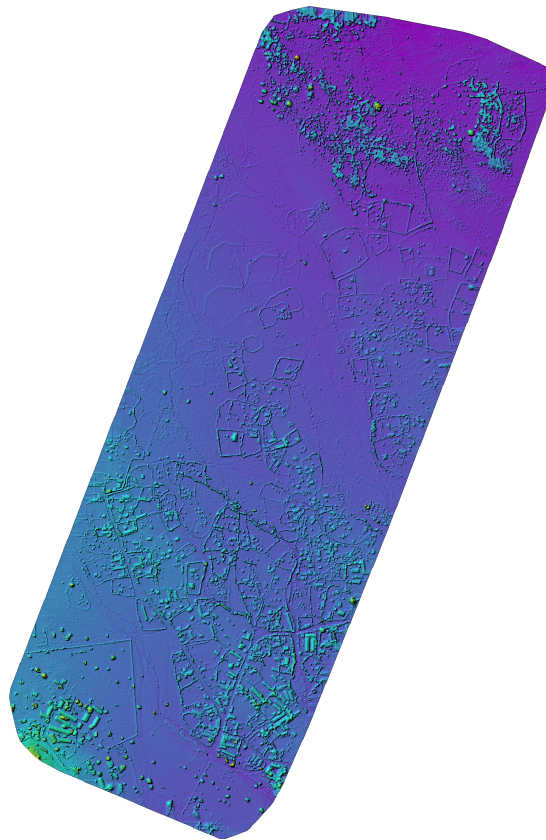
Reconstructed Images	1983 over 1983 shots (100.0%)
Reconstructed Points (Sparse)	2141859 over 2168096 points (98.8%)
Reconstructed Points (Dense)	260,670,416 points
Average Ground Sampling Distance (GSD)	6.5 cm
Detected Features	10,052 features
Reconstructed Features	5,791 features
Geographic Reference	GPS
GPS errors	1.18 meters



Previews



Orthophoto



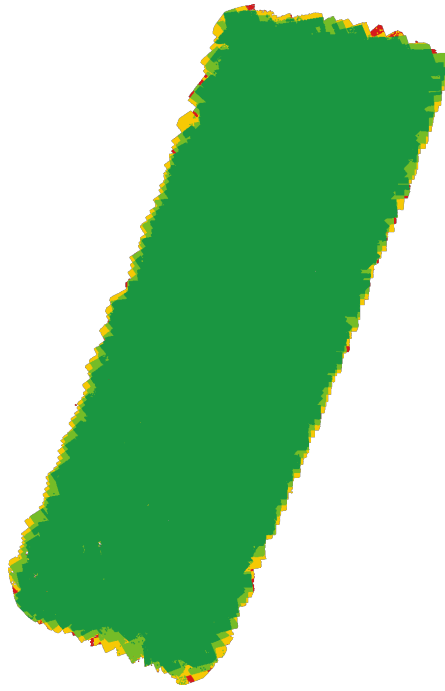
Digital Surface Model



597.46m

612.18m

Survey Data



■ 2
 ■ 3
 ■ 4
 ■ 5+

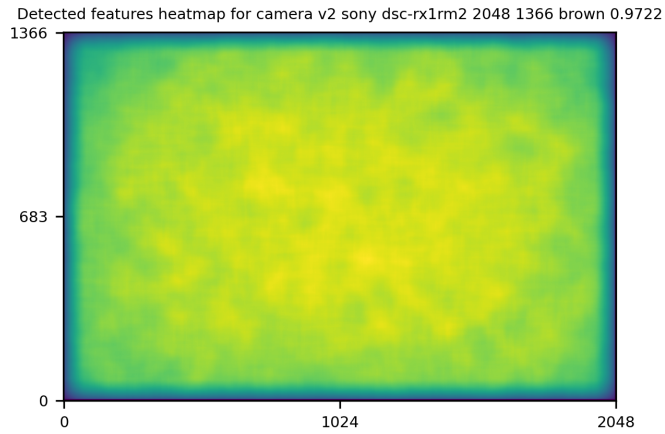
GPS/GCP/3D Errors Details

GPS	Mean	Standard Deviation	RMS Error
X Error (meters)	-0.013	0.662	0.662
Y Error (meters)	0.006	0.860	0.860
Z Error (meters)	0.000	0.799	0.799
Total			1.181

3D	Mean	Standard Deviation	RMS Error
X Error (meters)	0.034	0.048	0.059
Y Error (meters)	0.029	0.038	0.047
Z Error (meters)	0.115	0.146	0.186
Total			0.128

	Absolute	Relative
Horizontal Accuracy CE90 (meters)	1.535	0.099
Vertical Accuracy LE90 (meters)	1.257	0.256

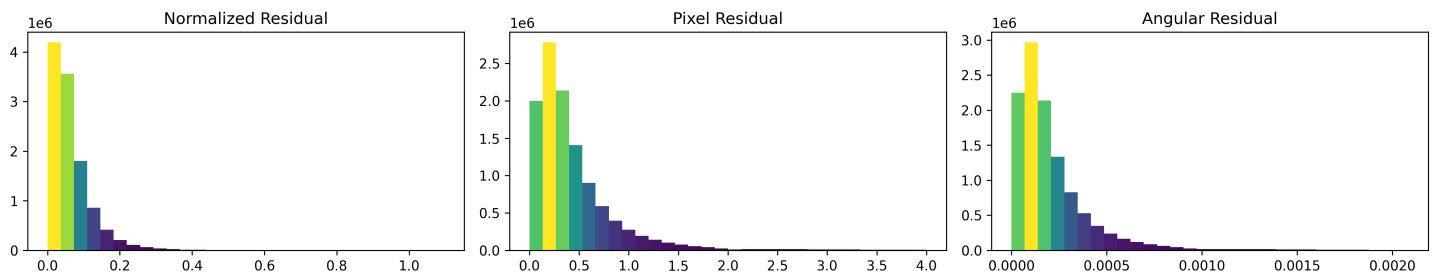
Features Details



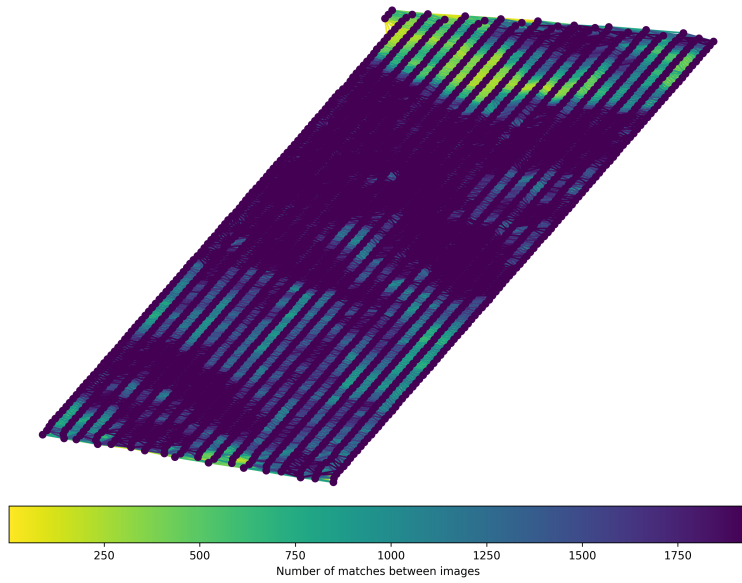
	Min.	Max.	Mean	Median
Detected	6817	12354	9957	10052
Reconstructed	641	8875	5753	5791

Reconstruction Details

Average Reprojection Error (normalized / pixels / angular)	0.07 / 0.45 / 0.00021
Average Track Length	5.33 images
Average Track Length (> 2)	7.46 images



Tracks Details



Length	2	3	4	5	6	7	8	9	10
Count	836636	326827	189918	131074	98334	78092	65196	55961	49372

Camera Models Details

v2 sony dsc-rx1rm2 2048 1366 brown 0.9722

	k1	k2	k3	p1	p2	focal	aspect_ratio	cx	cy
Initial	0.0000	0.0000	0.0000	0.0000	0.0000	0.9722	1.0000	0.0000	0.0000
Optimized	-0.0174	0.0258	-0.0391	0.0015	-0.0011	0.9353	1.0000	-0.0021	0.0039

