

ODM Quality Report

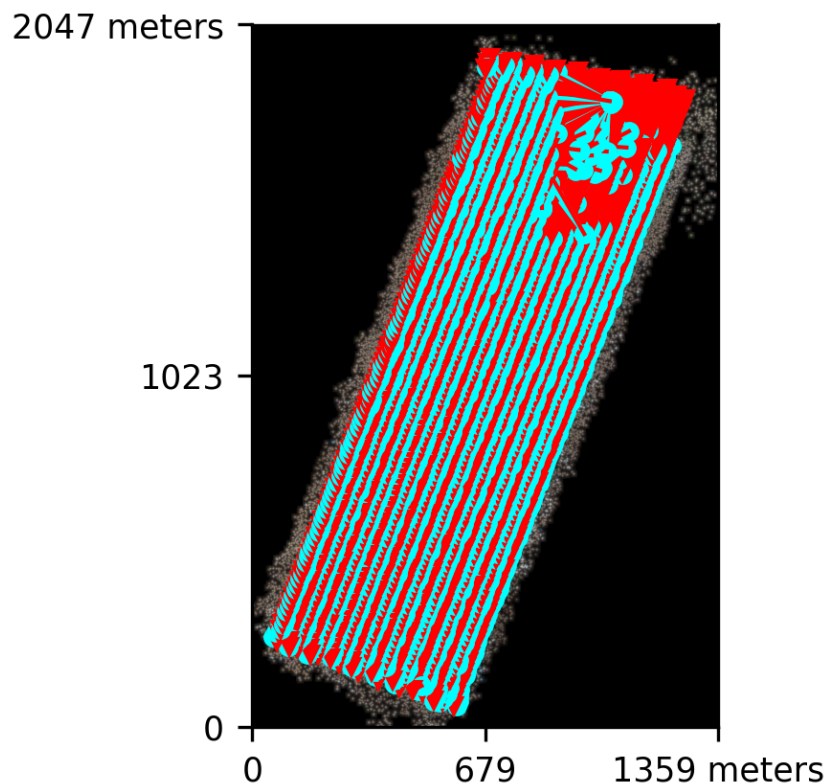
Processed with ODM version 3.3.2

Dataset Summary

Date	21/11/2023 at 14:19:33
Area Covered	2.198851 km ²
Processing Time	18.0h:22.0m:56.0s
Capture Start	01/01/2015 at 00:05:36
Capture End	01/01/2015 at 00:46:54

Processing Summary

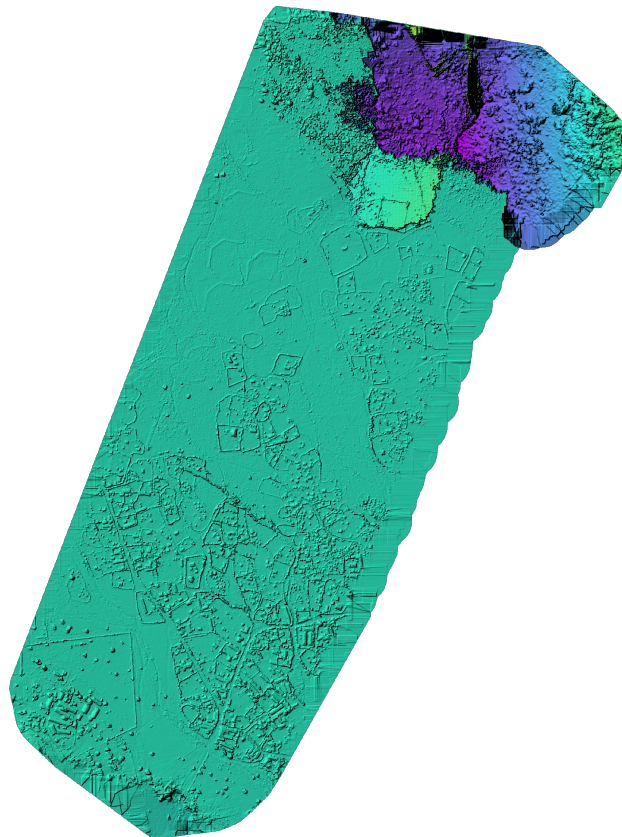
Reconstructed Images	1983 over 1983 shots (100.0%)
Reconstructed Points (Sparse)	2013311 over 2169381 points (92.8%)
Reconstructed Points (Dense)	235,662,217 points
Average Ground Sampling Distance (GSD)	6.5 cm
Detected Features	10,052 features
Reconstructed Features	5,699 features
Geographic Reference	GPS
GPS errors	15.48 meters



Previews



Orthophoto



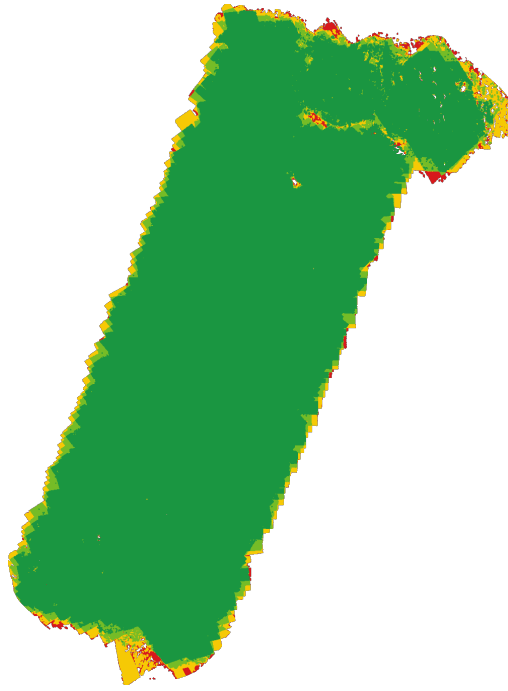
Digital Surface Model



299.29m

793.90m

Survey Data



■ 2 ■ 3 ■ 4 ■ 5+

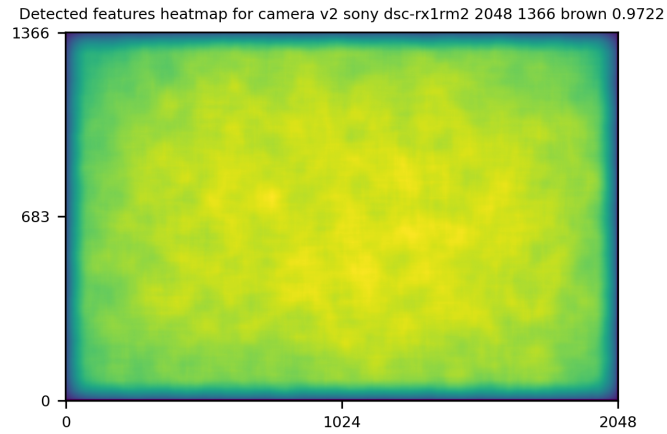
GPS/GCP/3D Errors Details

GPS	Mean	Standard Deviation	RMS Error
X Error (meters)	-0.646	32.170	32.176
Y Error (meters)	0.779	17.934	17.951
Z Error (meters)	0.590	8.581	8.601
Total			15.477

3D	Mean	Standard Deviation	RMS Error
X Error (meters)	0.071	0.183	0.196
Y Error (meters)	0.060	0.164	0.175
Z Error (meters)	0.249	0.668	0.713
Total			0.282

	Absolute	Relative
Horizontal Accuracy CE90 (meters)	43.205	0.192
Vertical Accuracy LE90 (meters)	2.659	0.536

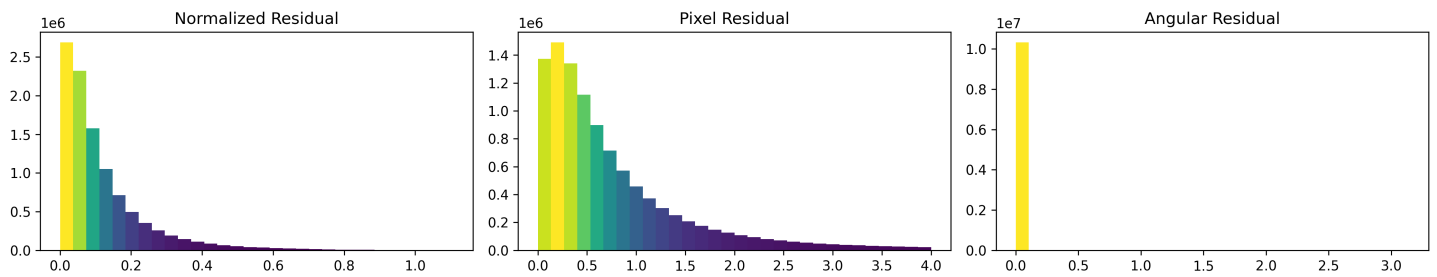
Features Details



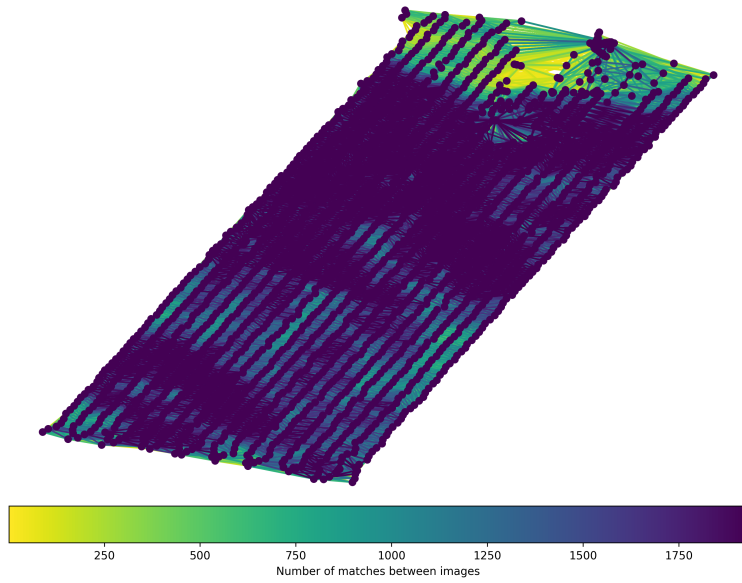
	Min.	Max.	Mean	Median
Detected	6817	12354	9957	10052
Reconstructed	461	8954	5536	5699

Reconstruction Details

Average Reprojection Error (normalized / pixels / angular)	0.12 / 0.75 / 0.00033
Average Track Length	5.45 images
Average Track Length (> 2)	7.53 images



Tracks Details



Length	2	3	4	5	6	7	8	9	10
Count	756032	307822	181938	125780	95125	75511	63260	54651	47918

Camera Models Details

v2 sony dsc-rx1rm2 2048 1366 brown 0.9722

	k1	k2	k3	p1	p2	focal	aspect_ratio	cx	cy
Initial	0.0000	0.0000	0.0000	0.0000	0.0000	0.9722	1.0000	0.0000	0.0000
Optimized	-0.0231	0.0219	-0.0154	0.0015	-0.0013	1.0887	1.0000	-0.0041	0.0174

