

ODM Quality Report

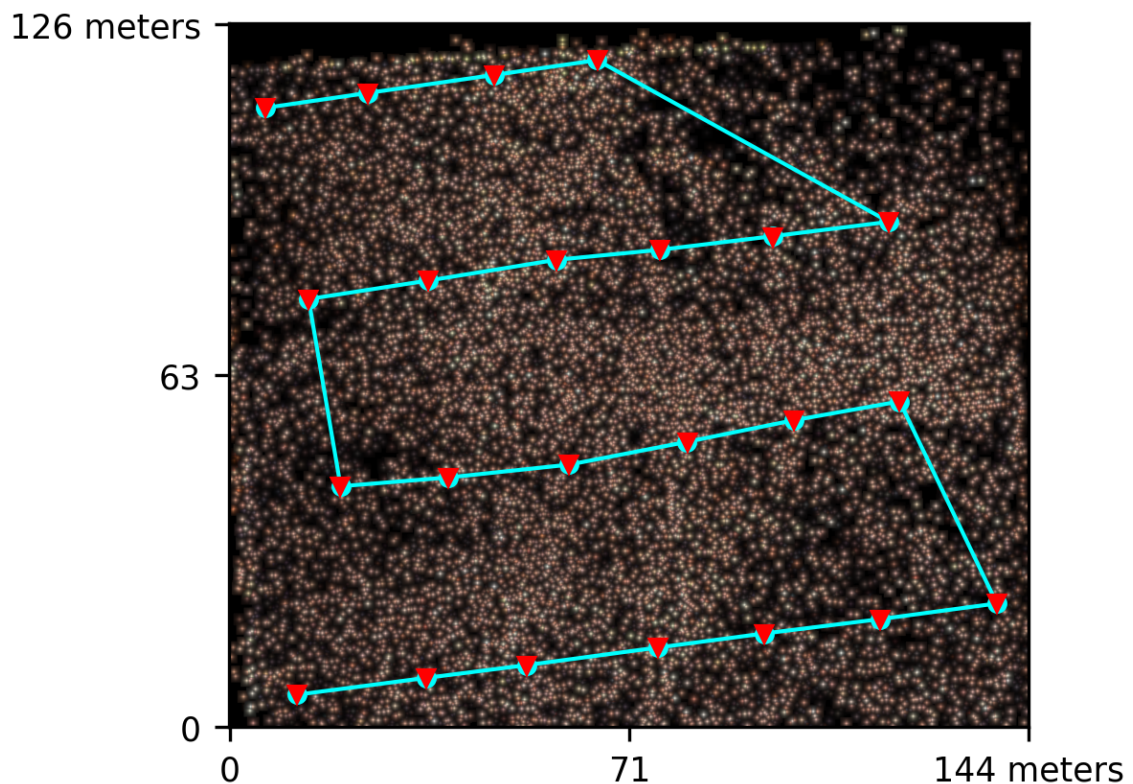
Processed with ODM version 2.6.1

Dataset Summary

Date	07/09/2021 at 17:26:45
Area Covered	0.014989 km ²
Processing Time	7.0m:32.0s
Capture Start	01/09/2021 at 21:18:00
Capture End	01/09/2021 at 21:20:11

Processing Summary

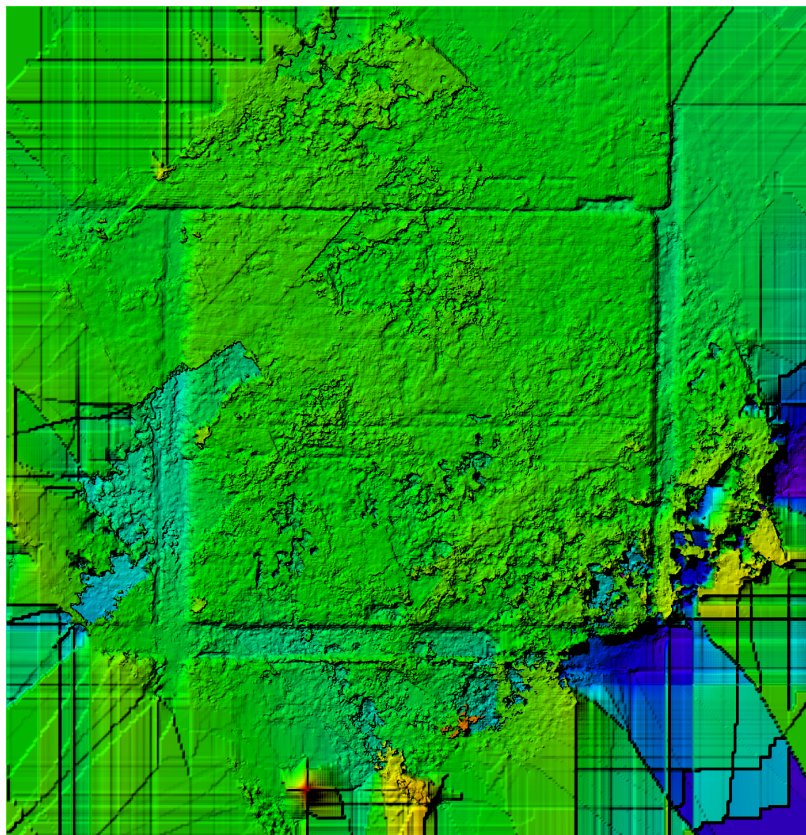
Reconstructed Images	23 over 23 shots (100.0%)
Reconstructed Points (Sparse)	43922 over 46979 points (93.5%)
Reconstructed Points (Dense)	2,204,809 points
Average Ground Sampling Distance (GSD)	3.5 cm
Detected Features	55,559 features
Reconstructed Features	4,368 features
Geographic Reference	GPS
GPS errors	0.10 meters



Previews



Orthophoto



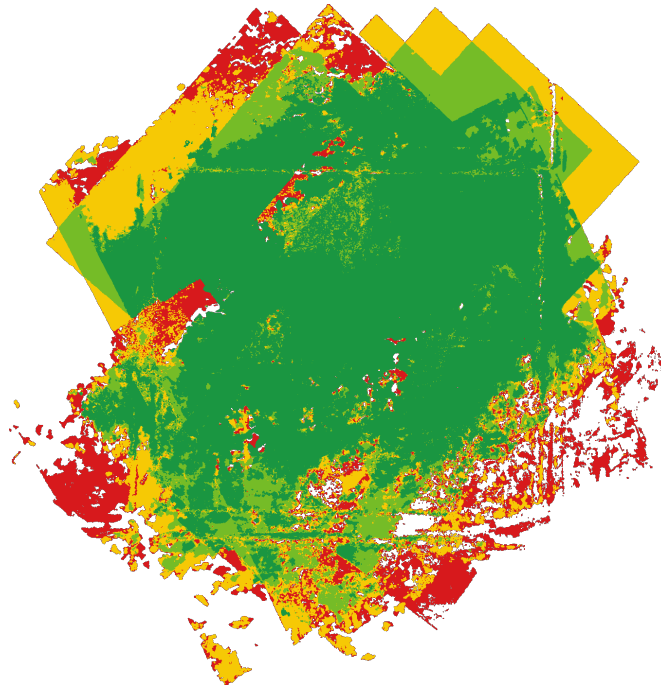
Digital Surface Model



286.60m

315.57m

Survey Data



■ 2 ■ 3 ■ 4 ■ 5+

GPS/GCP/3D Errors Details

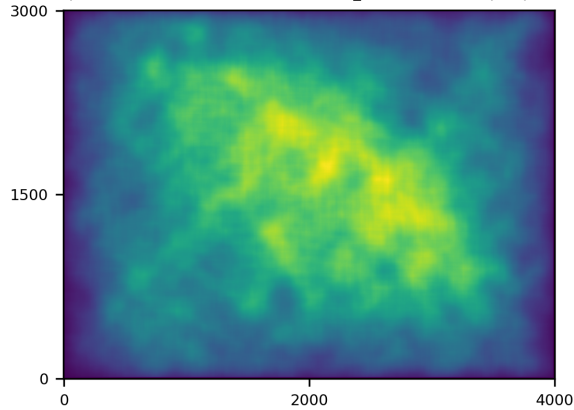
GPS	Mean	Sigma	RMS Error
X Error (meters)	0.000	0.014	0.014
Y Error (meters)	0.000	0.024	0.024
Z Error (meters)	-0.005	0.128	0.128
Total			0.102

3D	Mean	Sigma	RMS Error
X Error (meters)	0.087	0.164	0.185
Y Error (meters)	0.090	0.153	0.177
Z Error (meters)	0.391	0.615	0.729
Total			0.423

	Absolute	Relative
Horizontal Accuracy CE90 (meters)	0.037	0.316
Vertical Accuracy LE90 (meters)	0.201	0.781

Features Details

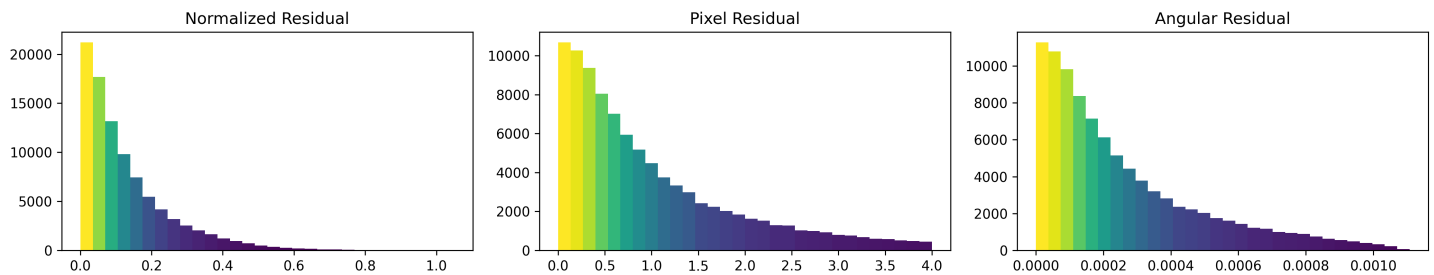
Detected features heatmap for camera v2 sentera 5.4mm-0001_0015 4000 3000 perspective 0.8709 redgarbagenir



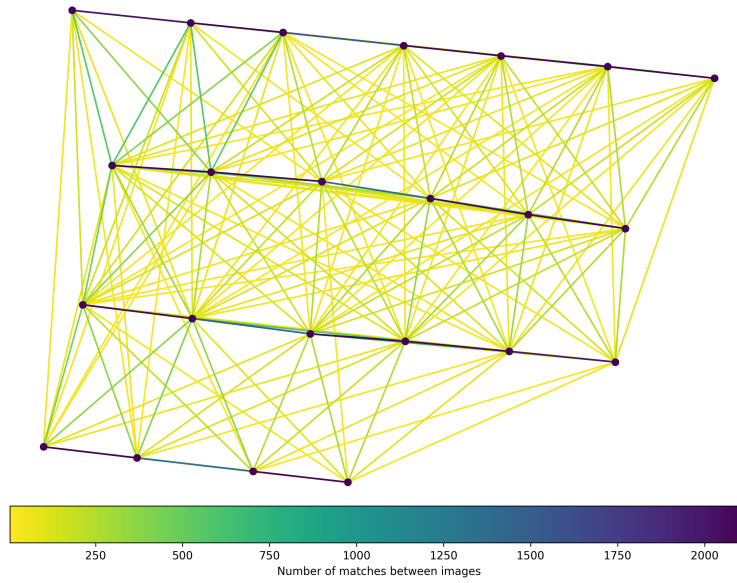
	Min.	Max.	Mean	Median
Detected	39227	63387	53788	55559
Reconstructed	2315	6435	4311	4368

Reconstruction Details

Average Reprojection Error (normalized / pixels / angular)	0.13 / 0.99 / 0.00026
Average Track Length	2.26 images
Average Track Length (> 2)	3.66 images



Tracks Details



Length	2	3	4	5	6	7	8	9	10
Count	37120	4501	1211	568	243	138	59	39	21

Camera Models Details

v2 sentera 5.4mm-0001_0015 4000 3000 perspective 0.8709 redgarbagenir

	k1	k2	focal
Initial	0.0000	0.0000	0.8710
Optimized	-0.0732	0.0710	0.8984

