

GWD-R

Distributed Resource Management
Application API (DRMAA) Working Group

Hrabri Rajic, Intel Americas Inc. (maintainer)
Roger Brobst, Cadence Design Systems
Waiman Chan, IBM
Fritz Ferstl, Sun Microsystems
Jeff Gardiner, John P. Robarts Res. Inst.
Andreas Haas, Sun Microsystems
Bill Nitzberg, Veridian Systems
Hrabri Rajic*, Intel Americas Inc.
John Tollefsrud*, Sun Microsystems
*co-chairs
September, 2003

Distributed Resource Management Application API Specification 1.0

Status of This Memo

This memo is a Global Grid Forum Grid Working Draft - Recommendations (GWD-R) in process, in general accordance with the provisions of Global Grid Forum Document GFD-C.1, the Global Grid Forum Documents and Recommendations: Process and Requirements, revised April 2002.

Copyright Notice

Copyright © Global Grid Forum (2003). All Rights Reserved.

Abstract

This document describes the Distributed Resource Management Application API (DRMAA), which provides a generalized API to distributed resource management systems (DRMSs) in order to facilitate integration of application programs.

The scope of DRMAA is limited to job submission, job monitoring and control, and retrieval of the finished job status. DRMAA provides application developers and distributed resource management builders with a programming model that enables the development of distributed applications tightly coupled to an underlying DRMS. For deployers of such distributed applications, DRMAA preserves flexibility and choice in system design.

Table of Contents

Abstract	1
1. Introduction	3
1.1 DRMAA Scope	3
1.2 Language Issues	3
1.3 Notational Conventions	3
2. Interface Design and Implementation Considerations	3
2.1 Late Binding and Portability	3
2.2 Thread Safe	4
2.3 Call blocking	4
2.4 Distributed Application Environment	4
2.4.1 Job Categories	4
2.4.2 Native Specification	5
2.5 Interface Routines General Description	6
2.5.1 Init and Exit Routines	6
2.5.2 Job Template Routines	6
2.5.3 Job Submission Routines	6
2.5.4 Job Monitoring and Controlling Routines	6
2.5.5 Auxiliary Routines	7
2.6 DRMAA Job State Transition Diagram	8
3. API Specification	9
3.1 Routines	9
3.1.1 Error Codes	9
3.1.2 DRMAA Sessions	9
3.1.3 Run Usage Data	9
3.1.4 Precedence Rules	10
3.1.5 Site-Specific Requirements	10
3.1.6 Job Valuator	10
3.2 DRMAA API	10
3.2.1 Initialization and Exit Routines	11
3.2.2 Job Template Routines	11
3.2.3 Job attributes	13
3.2.3.1 Mandatory attributes	13
3.2.3.2 Optional Attributes	17
3.2.4 Job Submission Routines	19
3.2.5 Job Control Routines	20
3.2.6 Auxiliary Routines	24
3.3 List of DRMAA Errors	25
4. Security Considerations	27
Author Information	28
Intellectual Property Statement	29
Full Copyright Notice	29

1. Introduction

This document describes an API for the submission and control of jobs to one or more Distributed Resource Management Systems (DRMS). The specification encompasses the high-level functionality necessary for an application to consign a job to a DRMS, including common operations on jobs like termination or suspension. The objective is to facilitate the direct interfacing of applications to DRMS for application builders, portal builders, and independent software vendors. The specification abstracts the fundamental job interfaces of DRMS and provides an easy-to-use programming model, thereby encouraging adoption by both application builders and DRMS builders.

1.1 DRMAA Scope

The scope of DRMAA 1.0 is limited to job submission, job monitoring and control, and retrieval of the finished job status.

1.2 Language Issues

The document authors maintain that the API should be described such that it can be implemented in multiple languages. Therefore, in this document DRMAA interfaces are described using an Interface Definition Language (IDL) - like language.

1.3 Notational Conventions

The key words “MUST,” “MUST NOT,” “REQUIRED,” “SHALL,” “SHALL NOT,” “SHOULD,” “SHOULD NOT,” “RECOMMENDED,” “MAY,” and “OPTIONAL” are to be interpreted as described in RFC-2119 [RFC 2119].

The following abbreviations are used in this document:

API	Application Programming Interface
DRM	Distributed Resource Management
DRMS	Distributed Resource Management System
DRMAA	Distributed Resource Management Application API
ISV	Independent Software Vendor

2. Interface Design and Implementation Considerations

The DRMAA API has been developed to support what the authors believe will be desirable and common deployment scenarios of DRMAA implementations and applications. Specific attributes of library implementations of DRMAA SHOULD include, and the DRMAA specification anticipates:

2.1 Late Binding and Portability

DRMAA implementations SHOULD be provided as shared modules that MAY be interchangeably selected at run time by the end user. DRMAA implementations MAY target one or more DRMSs. In the latter case a DRMAA-enabled application may bind at run time to a specific DRMS via a DRMAA library by setting an environment variable for the specific DRMS, or by providing the specific DRMS connection string in the initialization step.

2.2 Thread Safe

The authors expect that developers will link to a DRMAA library from serial and multithreaded codes; hence it is RECOMMENDED a DRMAA library be thread-safe, and allow a multithreaded application to use DRMAA interfaces without any explicit synchronization among the application threads. Before a multithreaded application can use any of DRMAA interfaces, however, the DRMAA initialization routine SHOULD be called by only one thread, probably the main thread. Similarly, the DRMAA library SHOULD be disengaged by only one thread.

2.3 Call blocking

DRMAA manages the asynchrony of job submission and job completion similarly to Unix and Windows process interfaces by blocking on the wait call for a specific job request.

2.4 Distributed Application Environment

DRMAA specifies mechanisms for submitting a job, monitoring and controlling it, and obtaining its final status. Ideally DRMAA implementations and distributed applications need not be concerned with a particular DRMS environment and DRMS site-specific policies. To facilitate deployments where this cannot be fully accomplished, Job Categories and Native Specification MAY be used to abstract or aggregate the site-specific policies into simple strings that are interpreted by DRMAA implementations.

2.4.1 Job Categories

DRMAA facilitates writing DRM-enabled applications even though the deployment properties, in particular the configuration of the DRMS, cannot be known in advance. This is a typical problem that has heretofore made writing DRM-enabled applications difficult for many Independent Software Vendors (ISVs), where the DRM system is selected by the end user.

Experience with integrations based on DRM command line interfaces show that even when the same ISV application is run as a job with the same DRMS, site-specific policies differ widely across users. These policies typically concern site-specific attributes such as what resources are to be used by the job, preferences where to run the job, and how the job should be scheduled relative to other jobs.

For supporting the variety of policies, job-specific requests expressed by DRMS submit options are common in the DRMS product space. Usually, however, these options do not affect the job from the perspective of the application or of the individual submitting the job request. This observation is the basis for “job categories,” which insulate the application and individual requester from site-specific policies.

DRMAA 1.0 provides interfaces for “job categories” which encapsulate site-specific details, hiding these details from applications using the DRMAA interface. Site administrators MAY create a job category suitable for an application to be dispatched by the DRMS; the associated category name SHALL be specified as a job submission attribute. The DRMAA implementation MAY then use the category name to manage site-specific resource and functional requirements of jobs in the category. Such requirements need to be configurable by the site operating a DRMS and deploying an application on top of it.

An example can help to illustrate this idea:

At site A, rendering application X is used in a heterogeneous clustered environment that is managed by a DRMS. Since application X is available only at a subset of these machines, the administrator sets up the DRMS so that the end users must put a `-l X=true` into their submit command line.

At site B, the same application is used in a homogeneous clustered environment with rendering application X supported at all machines managed by the DRMS. However, since X jobs do compete with applications Y sharing the same resources and X applications are to be treated with higher priority than Y jobs, end users need to put a `-p 1023` into their submit command line for raising the dispatch priority.

An integration based on categories will allow submitting X jobs through the DRMAA interface in compliance with the policies of both sites A and B without the need to know about these policies. The ISV does this by specifying "X" as the category used for X rendering jobs submitted through the DRMAA interface and by mentioning this in the "DRMS integration" section of the X rendering software documentation.

The administrators at site A and site B read the documentation or installation instructions about the "X" DRMAA category. The documentation of their DRMS contains directions about the category support of their DRMAA interface implementation. From this documentation they learn how to configure their DRMS in a way that `-l X=true` is used for "X" jobs at site A while `-p 1023` is used at site B for those jobs.

DRMAA describes a mechanism for specifying the category. Associating the policy-related portion of the submit command line to the job is implementation specific.

2.4.2 Native Specification

The categories concept provides a means for completely hiding site-specific policy details to be considered with a DRMAA job submission for a whole class of jobs. One job category **MUST** be maintained for each policy to be used. In order to allow the DRMAA interface to also be used for the submission of jobs where job-specific policy specification is required "native specification" is supported. Native specification **MAY** be used without the requirement to maintain job categories, and submit options **MAY** be specified directly.

An example can help to illustrate this idea:

In order to implement the example from the previous section via native specifications, the native option string `-l X=true` has to be passed directly to the DRMAA interface while `-p 1023` has to be used at site B.

As far as the DRMAA interface specification is concerned, the native specification is an implementation-defined string and is interpreted by each DRMAA library. One **MAY** use job categories and native specification with the same job submission for policy specification. In this case, the DRMAA library is assumed to be capable of joining the outcome of the two policy sources in a reasonable way.

2.5 Interface Routines General Description

The interface routines are grouped in five categories: init and exit, job template handling, job submission, job monitoring and control, and auxiliary or informational routines that do not require initialization of a DRMAA session.

2.5.1 Init and Exit Routines

The calling sequence of the init routine allows all of the considered DRMS to be properly initialized, by interfacing either to the batch queue commands or to the DRMS API. Likewise, the exit routine requires parameters that will permit proper DRMS disengagement.

2.5.2 Job Template Routines

The remote jobs and their attributes SHALL be specified by the job template handle parameter. The job attributes SHALL be a string or a vector of string values.

The following job attributes are REQUIRED:

- Remote command to execute
- Remote command input parameters, a vector parameter
- Job state at submission
- Job environment, a vector parameter
- Job working directory
- Job category
- Native specification
- Standard input, output, and error streams
- E-mail distribution list to report the job completion and status, a vector parameter
- E-mail suppression
- Job start time
- Job name to be used for the job submission

2.5.3 Job Submission Routines

Two job submission routines are described, one for submitting individual jobs and one for submitting bulk jobs.

2.5.4 Job Monitoring and Controlling Routines

The job monitoring and controlling API handles several functions:

- Job holding, releasing, suspending, resuming, and killing
- Checking the exit code of the finished remote job
- Checking the remote job status

- Waiting for the remote job till the end of its execution
- Waiting for all the jobs or a subset of the current session jobs to finish execution (this is a useful synchronization mechanism)

The Unix and Windows signals are replaced with the job control routines that have counterparts in DRMS. The only nontraditional feature is the passing of DRMAA_JOB_IDS_SESSION_ALL string as job_id parameter to indicate operations on all job Id's in the current process.

The remote job SHALL be in one of the following states:

- System hold
- User hold
- System and user hold simultaneously
- Queued active
- System suspended
- User suspended
- System and user suspended simultaneously
- Running
- Finished (un)successfully

A rejected job is not assigned a job Id and consequently SHALL NOT have a state.

In a distributed system it may not be possible for the DRMAA implementation to determine the status of the remote job at all times.

2.5.5 Auxiliary Routines

The auxiliary routines are needed to obtain a textual representation of errors and other DRMAA implementation-specific information.

2.6 DRMAA Job State Transition Diagram

Figure 1 shows the DRMAA job state transition diagram in Harel notation:

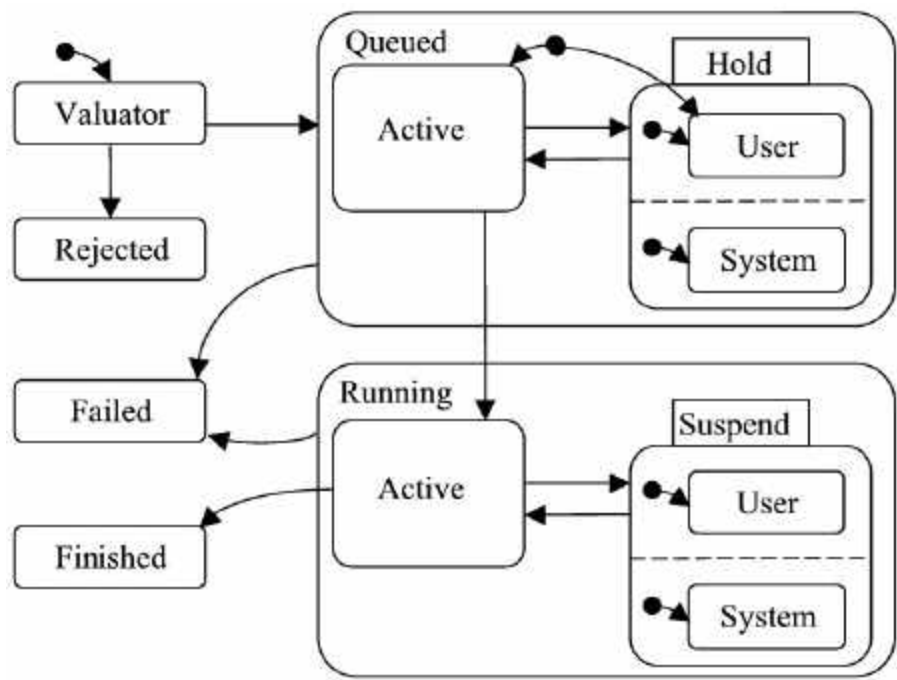


Figure 1: DRMAA job state transition diagram

3. API Specification

The API uses an IDL-like language to generalize discussion of allocation and deallocation, which have language specific implementations. The interface parameters could be IN, OUT, or INOUT parameters. Readers who are familiar with the C programming language should think of the parameters as being passed by value or by reference. Furthermore, the parameters could be scalar or vector values. The vector values are clearly documented.

3.1 Routines

In order to prevent interface name collisions all the routines have a prefix "drmaa."

3.1.1 Error Codes

All of the interfaces (except those that return already allocated scalar values and cannot fail) return an error code on exit. Successful return is indicated by return value `DRMAA_ERRNO_SUCCESS`. All internal errors SHALL be indicated with `DRMAA_ERRNO_INTERNAL_ERROR` error. An invalid argument is flagged as `DRMAA_ERRNO_INVALID_ARGUMENT`. The return codes are specified and listed in Section 3.3.

The error code MAY be provided to the `drmaa_strerror` routine to retrieve a textual representation of the error. Routines MUST output a context-specific error string that MAY be used in addition to the textual representation obtained from the error code. Zero length string indicates that such information is not available. This string is undefined on normal returns. The parameter used to convey the context specific error SHALL be ignored by the routine whenever success is returned. The length of any output context-specific error string SHALL NOT exceed `DRMAA_ERROR_STRING_BUFFER`.

3.1.2 DRMAA Sessions

An application process SHALL open only one DRMAA session at a time. Another session MAY be opened only after the current one is closed. Nesting of sessions is NOT RECOMMENDED. It is RECOMMENDED that the DRMAA library SHALL free all the session resources, although this is not guaranteed, so it is RECOMMENDED that old session resources not be used later. Job Id's SHALL remain valid from one session to another. Job control routines SHOULD work correctly if a job Id came from a previous DRMAA session, provided the current DRMAA session knows how to resolve this job Id. The burden is on the user to match previous job Id's with appropriate DRMAA sessions (i.e., DRMAA implementations). It is RECOMMENDED that restartable applications make job Id's persistent in order to access the already submitted jobs.

3.1.3 Run Usage Data

A DRMAA implementation SHALL collect remote run usage data (rusage variable) after the remote job run and job finish information (stat variable). The user MAY reap this data only once. The implementation is free to "garbage collect" the reaped data at a convenient time. Only the data from the current session's job Id MUST be available. Reaping data from other session job Id's MAY be supported in a DRMAA implementation.

3.1.4 Precedence Rules

The attributes set by using API routines SHALL be set at the compile time. The attributes set by job categories SHALL be set at installation time. The attributes set by the native specification SHALL be set at the run time. In principle these should determine the precedence rules, but these ideal precedence rules are not always achievable in practice because of complex interaction of attributes. Moreover, certain attributes in job categories may not be allowed to be overridden. The precedence rules are therefore implementation specific.

3.1.5 Site-Specific Requirements

Job categories and native specifications are two means for describing site-specific requirements. Setting of job categories is implementation specific. On the other hand, setting the native specification, while straightforward in the user code, could be a challenge if the user needs to provide a complex set of options. Quotation marks are especially problematic if only one variable is used for a set of native specification options.

The following are RECOMMENDED to developers to use this feature effectively:

- For each class of remote jobs, give end users a chance to specify site-specific environments, such as a queue where to send remote jobs or architecture(s) where the remote applications are available.
- Let users specify native specifications in a file if the distributed application has several classes of jobs to submit or several DRMAA sessions.
- Applications with a graphical user interface could have a dedicated dialog for this purpose.

3.1.6 Job Valuator

Before a submitted job enters a queue, it SHALL be passed through a valuator that determines whether the job attributes as specified are valid. If yes, a job Id SHALL be returned, and the job is successfully queued. If not, the job is rejected, job Id SHALL NOT be returned, and no job state is possible.

3.2 DRMAA API

For convenience, the API is divided in its five logical sections: init/exit, job template handling, job submission, job monitoring and control, and auxiliary routines.

`/* ----- Major Assumptions/Restrictions ----- */`

No explicit file staging.

Job Id Uniqueness -- "As unique as the underlying DRM makes them"

`/*Global constants */`

DRMAA_ERROR_STRING_BUFFER	= 1024
DRMAA_JOBNAME_BUFFER	= 1024
DRMAA_SIGNAL_BUFFER	= 32
DRMAA_TIMEOUT_WAIT_FOREVER	= -1
DRMAA_TIMEOUT_NO_WAIT	= 0

3.2.1 Initialization and Exit Routines

drmaa_init(contact, drmaa_context_error_buf)

IN contact /* contact information for DRM system (string) */
INOUT drmaa_context_error_buf /*Contains a context-sensitive error upon failed return*/

Initialize DRMAA API library and create a new DRMAA session. 'Contact' is an implementation-defined string that MAY be used to specify which DRM system to use. This routine MUST be called before any other DRMAA calls, except for drmaa_version(), drmaa_get_DRM_system(), drmaa_get_DRMAA_implementation(), or drmaa_get_contact(). If 'contact' is NULL, the default DRM system SHALL be used provided there is only one DRMAA implementation in the provided binary module. When there is more than one DRMAA implementation in the binary module, drmaa_init() SHALL return the DRMAA_ERRNO_NO_DEFAULT_CONTACT_STRING_SELECTED error. drmaa_init() SHOULD be called by only one of the threads. The main thread is RECOMMENDED. A call by another thread SHALL return DRMAA_ERRNO_ALREADY_ACTIVE_SESSION.

drmaa_init routine SHALL return DRMAA_ERRNO_SUCCESS on success, otherwise

DRMAA_ERRNO_INVALID_CONTACT_STRING,
DRMAA_ERRNO_NO_MEMORY,
DRMAA_ERRNO_ALREADY_ACTIVE_SESSION,
DRMAA_ERRNO_NO_DEFAULT_CONTACT_STRING_SELECTED, or
DRMAA_ERRNO_DEFAULT_CONTACT_STRING_ERROR.

drmaa_exit(drmaa_context_error_buf)

INOUT drmaa_context_error_buf /*Contains a context-sensitive error upon failed return*/

Disengage from DRMAA library and allow the DRMAA library to perform any necessary internal cleanup.

This routine SHALL end the current DRMAA session but SHALL NOT affect any jobs (e.g., queued and running jobs SHALL remain queued and running). drmaa_exit() SHOULD be called by only one of the threads. Other thread calls to drmaa_exit() MAY fail since there is no active session.

drmaa_exit routine SHALL return DRMAA_ERRNO_SUCCESS on success, otherwise DRMAA_ERRNO_DRMS_EXIT_ERROR or DRMAA_ERRNO_NO_ACTIVE_SESSION.

3.2.2 Job Template Routines

drmaa_allocate_job_template(jt, drmaa_context_error_buf)

jt /* job template (implementation-defined handle) */
INOUT drmaa_context_error_buf /*Contains a context-sensitive error upon failed return*/

Allocate a new job template.

drmaa_allocate_job_template() SHALL return DRMAA_ERRNO_SUCCESS on success,

otherwise DRMAA_ERRNO_DRM_COMMUNICATION_FAILURE
DRMAA_ERRNO_INTERNAL_ERROR or DRMAA_ERRNO_NO_MEMORY .

drmaa_delete_job_template(jt, drmaa_context_error_buf)
INOUT jt /* job template (implementation-defined handle) */
INOUT drmaa_context_error_buf /*Contains a context-sensitive error upon failed return*/

Deallocate a job template. This routine has no effect on jobs.
drmaa_delete_job_template() SHALL return DRMAA_ERRNO_SUCCESS on success,
otherwise DRMAA_ERRNO_DRM_COMMUNICATION_FAILURE or
DRMAA_ERRNO_INTERNAL_ERROR.

drmaa_set_attribute(jt, name, value, drmaa_context_error_buf)
INOUT jt /* job template (implementation-defined handle) */
IN name /* attribute name (string) */
IN value /* attribute value (string) */
INOUT drmaa_context_error_buf /*Contains a context sensitive error upon failed return*/

Adds ('name', 'value') pair to list of attributes in job template 'jt'.
Only non-vector attributes SHALL be passed.

drmaa_set_attribute routine SHALL return DRMAA_ERRNO_SUCCESS on success, otherwise
DRMAA_ERRNO_INVALID_ATTRIBUTE_FORMAT,
DRMAA_ERRNO_INVALID_ARGUMENT,
DRMAA_ERRNO_NO_MEMORY ,
DRMAA_ERRNO_INVALID_ATTRIBUTE_VALUE, or
DRMAA_ERRNO_CONFLICTING_ATTRIBUTE_VALUES.

drmaa_get_attribute(jt, name, value, drmaa_context_error_buf)
IN jt /* job template (implementation-defined handle) */
IN name /* attribute name (string) */
OUT value /* attribute value (string) */
INOUT drmaa_context_error_buf /*Contains a context sensitive error upon failed return*/

If 'name' is an existing non-vector attribute name in the job template
'jt', then the value of 'name' SHALL be returned; otherwise, NULL is returned.

drmaa_get_attribute routine SHALL return DRMAA_ERRNO_SUCCESS
on success, otherwise DRMAA_ERRNO_INVALID_ATTRIBUTE_VALUE.

drmaa_set_vector_attribute(jt, name, values, drmaa_context_error_buf)
INOUT jt /* job template (implementation-defined handle) */
IN name /* attribute name (string) */
IN values /* vector of attribute value (string vector) */
INOUT drmaa_context_error_buf /*Contains a context sensitive error upon failed return*/

Adds ('name', 'values') pair to list of vector attributes in job template 'jt'.
Only vector attributes SHALL be passed.

drmaa_set_vector_attribute routine SHALL return DRMAA_ERRNO_SUCCESS
on success, otherwise

DRMAA_ERRNO_INVALID_ATTRIBUTE_FORMAT,
DRMAA_ERRNO_INVALID_ATTRIBUTE_VALUE,
DRMAA_ERRNO_NO_MEMORY ,
DRMAA_ERRNO_CONFLICTING_ATTRIBUTE_VALUES.

drmaa_get_vector_attribute(jt, name, values, drmaa_context_error_buf)

IN jt /* job template (implementation-defined handle) */
IN name /* attribute name (string) */
OUT values /* vector of attribute value (string vector) */

If 'name' is an existing vector attribute name in the job template 'jt',
then the values of 'name' are returned; otherwise, NULL is returned.

drmaa_get_vector_attribute routine SHALL return DRMAA_ERRNO_SUCCESS
on success, otherwise DRMAA_ERRNO_INVALID_ATTRIBUTE_VALUE.

drmaa_get_attribute_names(names, drmaa_context_error_buf)

OUT names /* vector of attribute name (string vector) */
INOUT drmaa_context_error_buf /*Contains a context sensitive error upon failed return*/

SHALL return the set of supported attribute names whose associated value type is String.
This set SHALL include supported DRMAA reserved attribute names and native attribute
names.

drmaa_get_attribute_names routine SHALL return DRMAA_ERRNO_SUCCESS
on success, otherwise DRMAA_ERRNO_NO_MEMORY.

drmaa_get_vector_attribute_names(names, drmaa_context_error_buf)

OUT names /* vector of attribute name (string vector) */
INOUT drmaa_context_error_buf /*Contains a context sensitive error upon failed return*/

SHALL return the set of supported attribute names whose associated value type is
String Vector. This set SHALL include supported DRMAA reserved attribute names and native
attribute names.

drmaa_get_vector_attribute_names routine SHALL return DRMAA_ERRNO_SUCCESS
on success, otherwise DRMAA_ERRNO_NO_MEMORY.

3.2.3 Job attributes

3.2.3.1 Mandatory attributes

The following reserved attribute names SHALL be available in all implementations of
DRMAA. Vector attributes are marked with a 'V':

remote command to execute (string)

It is relative to the execution host.
It is evaluated on the execution host.
No binary file management is done.

The attribute name is `drmaa_remote_command`.

V input parameters (vector of strings)

These parameters SHALL be passed as arguments to the job.

The attribute name is `drmaa_v_argv`.

job state at submission (string value)

This might be useful for a rather rudimentary, but very general job-dependent execution.

The states SHALL be `drmaa_hold` and `drmaa_active`:

`drmaa_active` means job has been queued, and is eligible to run

`drmaa_hold` means job has been queued, but it is NOT eligible to run

The attribute name is `drmaa_js_state`.

V job environment (vector of strings)

The environment values that define the remote environment.

Each string SHALL comply with the format `<name>=<value>`.

The values override the remote environment values if there is a collision.

If above is not possible, it is implementation dependent.

The attribute name is `drmaa_v_env`.

job working directory (string)

This attribute specifies the directory where the job is executed.

If not set, it is implementation dependent.

Evaluated relative to the execution host.

A `$drmaa_hd_ph$` placeholder at the begin denotes the remaining portion of the `directory_name` as a relative directory name resolved relative to the job users home directory at the execution host.

The `$drmaa_incr_ph$` placeholder MAY be used at any position within the `directory_name` of parametric job templates and SHALL be substituted by the underlying DRM system with the parametric jobs' index.

The `directory_name` MUST be specified in a syntax that is common at the host where the job is executed.

If set and no placeholder is used, an absolute directory specification is expected.

If set and the directory does not exist, the job enters the state `DRMAA_PS_FAILED`.

The attribute name is `drmaa_wd`.

job category (string)

An implementation-defined string specifying how to resolve site-specific resources and/or policies.

The attribute name is `drmaa_job_category`.

native specification (string)

An implementation-defined string that is passed by the end user to DRMAA to specify site-specific resources and/or policies.

The attribute name is `drmaa_native_specification`.

V e-mail address (vector of strings)

It is used to report the job completion and status.
The attribute name is drmaa_v_email.

e-mail suppression (string)

It is used to block sending e-mail by default.
1 block
0 do not block.
The attribute name is drmaa_block_email

job start time (string)

This attribute specifies the earliest time when the job MAY be eligible to be run.
This is a REQUIRED attribute named drmaa_start_time
The value of the attribute SHALL be of the form
[[[CC]YY/]MM/]DD] hh:mm:ss [-|+}UU:uu]

where

CC is the first two digits of the year (century-1)

YY is the last two digits of the year

MM is the two digits of the month [01,12]

DD is the two-digit day of the month [01,31]

hh is the two-digit hour of the day [00,23]

mm is the two-digit minute of the day [00,59]

ss is the two-digit second of the minute [00,61]

UU is the two-digit hours since (before) UTC

uu is the two-digit minutes since (before) UTC

If the optional UTC-offset is not specified, the offset associated with the local timezone SHALL be used.

If the day (DD) is not specified, the current day SHALL be used unless the specified hour:mm:ss has already elapsed, in which case the next day SHALL be used.

Similarly for month (MM), year (YY), and century-1 (CC).

Example:

The time: Sep 3 4:47:27 PM PDT 2002,
could be represented as: 2002/09/03 16:47:27 -07:00

job name

A job name SHALL comprise alphanumeric and _ characters.
The drmaa-implementation SHALL NOT provide the client with a job name longer than DRMAA_JOBNAME_BUFFER -1 (1023) characters.
The drmaa-implementation MAY truncate any client-provided job name to an implementation-defined length that is at least 31 characters.
The attribute name is drmaa_job_name

input stream (string)

Specifies the jobs' standard input.
Unless set elsewhere, if not explicitly set in the job template, the job is started with an empty input stream.
If set, specifies the network path of the jobs input stream file of the form [hostname]:file_path

When the `drmaa_transfer_files` job template attribute is supported and contains the character 'i', the input file SHALL be fetched by the underlying DRM system from the specified host or from the submit host if no hostname is specified.

When the `drmaa_transfer_files` job template attribute is not supported or does not contain the character 'i', the input file is always expected at the host where the job is executed, irrespective of a possibly hostname specified. The `$drmaa_incr_ph$` placeholder can be used at any position within the `file_path` of parametric job templates and SHALL be substituted by the underlying DRM system with the parametric jobs' index.

A `$drmaa_hd_ph$` placeholder at the begin of the `file_path` denotes the remaining portion of the `file_path` as a relative file specification resolved relative to the job users home directory at the host where the file is located.

A `$drmaa_wd_ph$` placeholder at the begin of the `file_path` denotes the remaining portion of the `file_path` as a relative file specification resolved relative to the jobs working directory at the host where the file is located. The `file_path` MUST be specified in a syntax that is common at the host where the file is located.

If set, and the file can't be read, the job enters the state `DRMAA_PS_FAILED`. The attribute name is `drmaa_input_path`.

output stream (string)

Specifies how to direct the jobs' standard output.

If not explicitly set in the job template, the whereabouts of the jobs output stream is not defined.

If set, specifies the network path of the jobs output stream file of the form `[hostname]:file_path`

When the `drmaa_transfer_files` job template attribute is supported and contains the character 'o', the output file SHALL be transferred by the underlying DRM system to the specified host or to the submit host if no hostname is specified.

When the `drmaa_transfer_files` job template attribute is not supported or does not contain the character 'o', the output file is always kept at the host where the job is executed irrespective of a possibly hostname specified.

The `$drmaa_incr_ph$` placeholder can be used at any position within the `file_path` of parametric job templates and SHALL be substituted by the underlying DRM system with the parametric jobs' index.

A `$drmaa_hd_ph$` placeholder at the begin of the `file_path` denotes the remaining portion of the `file_path` as a relative file specification resolved relative to the job users home directory at the host where the file is located.

A `$drmaa_wd_ph$` placeholder at the begin of the `file_path` denotes the remaining portion of the `file_path` as a relative file specification resolved relative to the jobs working directory at the host where the file is located.

The `file_path` MUST be specified in a syntax that is common at the host where the file is located.

If set and the file can't be written before execution the job enters the state `DRMAA_PS_FAILED`.

The attribute name is `drmaa_output_path`.

error stream (string)

Specifies how to direct the jobs' standard error.

If not explicitly set in the job template, the whereabouts of the jobs error

stream is not defined.

If set, specifies the network path of the jobs error stream file of the form [hostname]:file_path

When the drmaa_transfer_files job template attribute is supported and contains the character 'e', the output file SHALL be transferred by the underlying DRM system to the specified host or to the submit host if no hostname is specified.

When the drmaa_transfer_files job template attribute is not supported or does not contain the character 'e', the error file is always kept at the host where the job is executed irrespectively of a possibly hostname specified.

The \$drmaa_incr_ph\$ placeholder can be used at any position within the file_path of parametric job templates and SHALL be substituted by the underlying DRM system with the parametric jobs' index.

A \$drmaa_hd_ph\$ placeholder at the begin of the file_path denotes the remaining portion of the file_path as a relative file specification resolved relative to the job users home directory at the host where the file is located.

A \$drmaa_wd_ph\$ placeholder at the begin of the file_path denotes the remaining portion of the file_path as a relative file specification resolved relative to the jobs working directory at the host where the file is located. The file_path MUST be specified in a syntax that is common at the host where the file is located.

If set and the file can't be written before execution the job enters the state DRMAA_PS_FAILED.

The attribute name is drmaa_error_path.

join files (string)

Specifies if the error stream should be intermixed with the output stream.

If not explicitly set in the job template the attribute defaults to 'n'.

Either 'y' or 'n' can be specified.

If 'y' is specified the underlying DRM system SHALL ignore the value of the drmaa_error_path attribute and intermix the standard error stream with the standard output stream as specified with drmaa_output_path.

The attribute name is drmaa_join_files.

3.2.3.2 Optional Attributes

The following reserved attribute names are OPTIONAL in a conforming DRMAA implementation. For attributes that are implemented, the meanings are REQUIRED to be as follows:

Note that the list of attributes that are implemented may be programmatically obtained by using the drmaa_get_attribute_names and drmaa_get_vector_attribute_names routines.

transfer files (string)

Specifies how to transfer files between hosts.

If not explicitly set in the job template the attribute defaults to "".

Any combination of 'e', 'i' and 'o' MAY be specified.

Whether the character 'e' is specified impacts the behavior of the drmaa_error_path attribute.

Whether the character 'i' is specified impacts the behavior of the

drmaa_input_path attribute.

Whether the character 'o' is specified impacts the behavior of the drmaa_output_path attribute.

The attribute name is drmaa_transfer_files.

absolute job termination time (string)

Specifies a deadline after which the DRMS will terminate a job.

This is a reserved attribute named drmaa_deadline_time

The value of the attribute SHALL be of the form

[[[CC]YY/MM/DD] hh:mm:ss] [{-|+}UU:uu]

where

CC is the first two digits of the year (century-1)

YY is the last two digits of the year

MM is the two digits of the month [01,12]

DD is the two digit day of the month [01,31]

hh is the two digit hour of the day [00,23]

mm is the two digit minute of the day [00,59]

ss is the two digit second of the minute [00,61]

UU is the two digit hours since (before) UTC

uu is the two digit minutes since (before) UTC

If an optional portion of the time specification is omitted, then the termination time SHALL be determined based upon the job's earliest start time.

If the day (DD) is not specified, the earliest start day for the job SHALL be used unless the specified hour:mm:ss precedes the corresponding portion of the job start time, in which case the next day SHALL be used.

Similarly for month (MM), year (YY), and century-1 (CC).

Example:

The time: Sep 3 4:47:27 PM PDT 2002,

could be represented as: 2002/09/03 16:47:27 -07:00

wall clock time limit (string)

This attribute specifies when the job's wall clock time limit has been exceeded. The DRMS SHALL terminate a job that has exceeded its wall clock time limit. Suspended time SHALL also be accumulated here.

This is a reserved attribute named drmaa_wct_hlimit

The value of the attribute SHALL be of the form

[[h:]m:]s

where

h is one or more digits representing hours

m is one or more digits representing minutes

s is one or more digits representing seconds

Example:

To terminate a job after 2 hours and 30 minutes,

any of the following MAY be passed:

2:30:0, 1:90:0, 150:0

soft wall clock time limit (string)

This attribute specifies an estimate as to how long the job will need wall clock time to complete. Note that the suspended time is also accumulated here. This attribute is intended to assist the scheduler. If the time specified is insufficient, the drmaa-implementation MAY impose a scheduling penalty. This is a reserved attribute named `drmaa_wct_slimit`. The value of the attribute SHALL be of the form `[[h:]m:]s` where

- h is one or more digits representing hours
- m is one or more digits representing minutes
- s is one or more digits representing seconds

job run duration hlimit (string)

This attribute specifies how long the job MAY be in a running state before its limit has been exceeded, and therefore is terminated by the DRMS. This is a reserved attribute named `drmaa_run_duration_hlimit`. The value of the attribute SHALL be of the form `[[h:]m:]s` where

- h is one or more digits representing hours
- m is one or more digits representing minutes
- s is one or more digits representing seconds

job run duration slimit (string)

This attribute specifies an estimate as to how long the job will need to remain in a running state to complete. This attribute is intended to assist the scheduler. If the time specified is insufficient, the drmaa-implementation MAY impose a scheduling penalty. This is a reserved attribute named `drmaa_run_duration_slimit`. The value of the attribute SHALL be of the form `[[h:]m:]s` where

- h is one or more digits representing hours
- m is one or more digits representing minutes
- s is one or more digits representing seconds

3.2.4 Job Submission Routines**drmaa_run_job(job_id, jt, drmaa_context_error_buf)**

```
OUT job_id          /* job identifier (string) */
IN jt               /* job template (implementation-defined handle) */
INOUT drmaa_context_error_buf /*Contains a context sensitive error upon failed return*/
```

Submit a job with attributes defined in the job template 'jt'. The job identifier 'job_id' is a printable, NULL terminated string, identical to that returned by the underlying DRM system.

`drmaa_run_job` routine SHALL return `DRMAA_ERRNO_SUCCESS` on success, otherwise

```
DRMAA_ERRNO_TRY_LATER,
DRMAA_ERRNO_DENIED_BY_DRM,
DRMAA_ERRNO_NO_MEMORY,
```

DRMAA_ERRNO_DRM_COMMUNICATION_FAILURE, or
DRMAA_ERRNO_AUTH_FAILURE.

drmaa_run_bulk_jobs(job_ids, jt, start, end, incr, drmaa_context_error_buf)
OUT job_ids /* job identifiers (array of strings) */
IN jt /* job template (implementation-defined handle) */
IN start /* beginning index (unsigned integer?)*/
IN end /* ending index (unsigned integer?) */
IN incr /* loop increment (integer)*/
INOUT drmaa_context_error_buf /*Contains a context sensitive error upon failed return*/

Submit a set of parametric jobs, dependent on the implied loop index, each with attributes defined in the job template 'jt'.

The job identifiers 'job_ids' SHALL be all printable, NULL terminated strings, identical to those returned by the underlying DRM system. Nonnegative loop bounds SHALL NOT use file names that start with minus sign like command line options.

The special index placeholder is a DRMAA defined string

```
drmaa_incr_ph /* == $incr_pl$ */
```

this is used to construct parametric job templates.

For example:

```
drmaa_set_attribute(pjt, "stderr", drmaa_incr_ph + ".err" );  
/*C++/java string syntax used */
```

drmaa_run_bulk_jobs routine SHALL return DRMAA_ERRNO_SUCCESS on success, otherwise

DRMAA_ERRNO_TRY_LATER,
DRMAA_ERRNO_DENIED_BY_DRM,
DRMAA_ERRNO_NO_MEMORY,
DRMAA_ERRNO_DRM_COMMUNICATION_FAILURE, or
DRMAA_ERRNO_AUTH_FAILURE.

3.2.5 Job Control Routines

drmaa_control(job_id, action, drmaa_context_error_buf)
IN job_id /* job identifier (string) */
IN action /* control action (const) */
INOUT drmaa_context_error_buf /*Contains a context sensitive error upon failed return*/

Start, stop, restart, or kill the job identified by 'job_id'.

If 'job_id' is DRMAA_JOB_IDS_SESSION_ALL, then this routine acts on all jobs *submitted* during this DRMAA session.

The legal values for 'action' and their meanings SHALL be:

DRMAA_CONTROL_SUSPEND:	stop the job,
DRMAA_CONTROL_RESUME:	(re)start the job,
DRMAA_CONTROL_HOLD:	put the job on-hold,
DRMAA_CONTROL_RELEASE:	release the hold on the job, and
DRMAA_CONTROL_TERMINATE:	kill the job.

This routine SHALL return once the action has been acknowledged by

the DRM system, but does not necessarily wait until the action has been completed.

drmaa_control routine SHALL return DRMAA_ERRNO_SUCCESS on success, otherwise

DRMAA_ERRNO_DRM_COMMUNICATION_FAILURE,
DRMAA_ERRNO_AUTH_FAILURE,
DRMAA_ERRNO_NO_MEMORY,
DRMAA_ERRNO_RESUME_INCONSISTENT_STATE
DRMAA_ERRNO_SUSPEND_INCONSISTENT_STATE
DRMAA_ERRNO_HOLD_INCONSISTENT_STATE
DRMAA_ERRNO_RELEASE_INCONSISTENT_STATE
DRMAA_ERRNO_INVALID_JOB.

drmaa_synchronize(job_ids, timeout, dispose, drmaa_context_error_buf)

IN job_ids /* job identifiers (array of strings) */
IN timeout /* how long we block in this call (signed long) */
IN dispose /* dispose reaping information (boolean)*/
INOUT drmaa_context_error_buf /*Contains a context sensitive error upon failed return*/

Wait until all jobs specified by 'job_ids' have finished execution. If 'job_ids' is DRMAA_JOB_IDS_SESSION_ALL, then this routine waits for all jobs *submitted* during this DRMAA session. To prevent blocking indefinitely in this call, the caller MAY use timeout specifying after how many seconds to time out in this call. The value DRMAA_TIMEOUT_WAIT_FOREVER (-1) MAY be specified to wait indefinitely for a result. The value DRMAA_TIMEOUT_NO_WAIT (0) MAY be specified to return immediately if no result is available. If the call exits before timeout, all the jobs have been waited on or there was an interrupt.

If the invocation exits on timeout, the return code is DRMAA_ERRNO_EXIT_TIMEOUT. The caller SHOULD check system time before and after this call in order to check how much time has passed.

Dispose parameter specifies how to treat reaping information:

True = 1 "fake reap", i.e. dispose of the rusage data
False = 0 do not reap

drmaa_synchronize routine SHALL return DRMAA_ERRNO_SUCCESS on success, otherwise

DRMAA_ERRNO_DRM_COMMUNICATION_FAILURE,
DRMAA_ERRNO_AUTH_FAILURE,
DRMAA_ERRNO_NO_MEMORY,
DRMAA_ERRNO_EXIT_TIMEOUT, or
DRMAA_ERRNO_INVALID_JOB.

drmaa_wait(job_id, stat, timeout, rusage, drmaa_context_error_buf)

IN job_id /* job identifier (string) or
DRMAA_JOB_IDS_SESSION_ANY (string) */
OUT job_id /* job identifier of ended job (string) or NULL */
OUT stat /* status code of job (integer) */
IN timeout /* how long we block in this call (signed long) */

OUT rusage /* resource usage (string array) */
INOUT drmaa_context_error_buf /*Contains a context sensitive error upon failed return*/

This routine SHALL wait for a job with job_id to fail or finish execution. If the special string DRMAA_JOB_IDS_SESSION_ANY is provided as the job_id, this routine SHALL wait for any job from the session. This routine is modeled on the wait3 POSIX routine. The timeout value is used to specify the desired behavior when a result is not immediately available.

The value DRMAA_TIMEOUT_WAIT_FOREVER (-1) MAY be specified to wait indefinitely for a result. The value DRMAA_TIMEOUT_NO_WAIT (0) MAY be specified to return immediately if no result is available. Alternatively, a number of seconds MAY be specified to indicate how long to wait for a result to become available.

If the call exits before timeout, either the job has been waited on successfully or there was an interrupt.

If the invocation exits on timeout, the return code is DRMAA_ERRNO_EXIT_TIMEOUT. The caller SHOULD check system time before and after this call in order to check how much time has passed.

The routine reaps jobs on a successful call, so any subsequent calls to drmaa_wait SHOULD fail returning an error DRMAA_ERRNO_INVALID_JOB meaning that the job has been already reaped. This error is the same as if the job was unknown. Failing due to an elapsed timeout has an effect that it is possible to issue drmaa_wait multiple times for the same job_id. When successful, the rusage information SHALL be provided as an array of strings, where each string complies with the format <name>=<value>.

The string portion <value> contains the amount of resources consumed by the job and is implementation-defined.

drmaa_wait routine SHALL return DRMAA_ERRNO_SUCCESS on success, otherwise

DRMAA_ERRNO_DRM_COMMUNICATION_FAILURE,
DRMAA_ERRNO_AUTH_FAILURE,
DRMAA_ERRNO_NO_RUSAGE,
DRMAA_ERRNO_EXIT_TIMEOUT,
DRMAA_ERRNO_NO_MEMORY,
DRMAA_ERRNO_NO_RUSAGE, or
DRMAA_ERRNO_INVALID_JOB.

The 'stat' drmaa_wait parameter is used in a series of functions, defined below, for providing more detailed information about job termination if available. An analogous set of macros is defined in POSIX for analyzing wait3(2) OUT parameter 'stat'. The misleading upper-case function names reminding to macros are changed to lower-case names.

drmaa_wifexited(OUT exited, IN stat, INOUT drmaa_context_error_buf)

Evaluates into 'exited' a non-zero value if stat was returned for a job that terminated normally. A zero value can also indicate that although the job has terminated normally an exit status is not available or that it is not known whether the job terminated normally. In both cases drmaa_wexitstatus() SHALL NOT provide exit status information.

A non-zero 'exited' value indicates more detailed diagnosis can be provided by means of `drmaa_wifsignaled()`, `drmaa_wtermsig()` and `drmaa_wcoredump()`.

`drmaa_wexitstatus(OUT exit_status, IN stat, INOUT drmaa_context_error_buf)`

If the OUT parameter 'exited' of `drmaa_wifexited()` is non-zero, this function evaluates into 'exit_code' the exit code that the job passed to `_exit()` (see `exit(2)`) or `exit(3C)`, or the value that the child process returned from main.

`drmaa_wifsignaled(OUT signaled, IN stat, INOUT drmaa_context_error_buf)`

Evaluates into 'signaled' a non-zero value if status was returned for a job that terminated due to the receipt of a signal. A zero value can also indicate that although the job has terminated due to the receipt of a signal the signal is not available or that it is not known whether the job terminated due to the receipt of a signal. In both cases `drmaa_wtermsig()` SHALL NOT provide signal information.

`drmaa_wtermsig(OUT signal, IN stat, INOUT drmaa_context_error_buf)`

If the OUT parameter 'signaled' of `drmaa_wifsignaled(stat)` is non-zero, this function evaluates into signal a string representation of the signal that caused the termination of the job. For signals declared by POSIX, the symbolic names SHALL be returned (e.g., `SIGABRT`, `SIGALRM`). For signals not declared by POSIX, any other string MAY be returned.

`drmaa_wcoredump(OUT core_dumped, IN stat, INOUT drmaa_context_error_buf)`

If the OUT parameter 'signaled' of `drmaa_wifsignaled(stat)` is non-zero, this function evaluates into 'core_dumped' a non-zero value if a core image of the terminated job was created.

`drmaa_wifaborted(OUT aborted, IN stat, INOUT drmaa_context_error_buf)`

Evaluates into 'aborted' a non-zero value if 'stat' was returned for a job that ended before entering the running state.

`drmaa_job_ps(IN job_id, OUT remote_ps, drmaa_context_error_buf);`

IN job_id /* job identifier (string) */
OUT remote_ps /* program status (constant) */
INOUT drmaa_context_error_buf /*Contains a context sensitive error upon failed return*/

Get the program status of the job identified by 'job_id'.

The possible values returned in 'remote_ps' and their meanings SHALL be:

<code>DRMAA_PS_UNDETERMINED</code>	= 00H : process status cannot be determined
<code>DRMAA_PS_QUEUED_ACTIVE</code>	= 10H : job is queued and active
<code>DRMAA_PS_SYSTEM_ON_HOLD</code>	= 11H : job is queued and in system hold
<code>DRMAA_PS_USER_ON_HOLD</code>	= 12H : job is queued and in user hold

DRMAA_PS_USER_SYSTEM_ON_HOLD	= 13H : job is queued and in user and system hold
DRMAA_PS_RUNNING	= 20H : job is running
DRMAA_PS_SYSTEM_SUSPENDED	= 21H : job is system suspended
DRMAA_PS_USER_SUSPENDED	= 22H : job is user suspended
DRMAA_PS_DONE	= 30H : job finished normally
DRMAA_PS_FAILED	= 40H : job finished, but failed.

DRMAA SHOULD always get the status of job_id from DRM system, unless the previous status has been DRMAA_PS_FAILED or DRMAA_PS_DONE and the status has been successfully cached. Terminated jobs get DRMAA_PS_FAILED status.

drmaa_synchronize routine SHALL return DRMAA_ERRNO_SUCCESS on success, otherwise

DRMAA_ERRNO_DRM_COMMUNICATION_FAILURE,
 DRMAA_ERRNO_NO_MEMORY,
 DRMAA_ERRNO_AUTH_FAILURE, or
 DRMAA_ERRNO_INVALID_JOB.

3.2.6 Auxiliary Routines

error_string drmaa_strerror (errno);

IN errno /* Errno number (integer) */
 RETURNS /* Readable text version of errno (constant string) */

SHALL return the error message text associated with the errno number. The routine SHALL return null string if called with invalid ERRNO number.

drmaa_get_contact(contacts, drmaa_context_error_buf);

OUT contacts /* Default contacts information for DRM systems (string) */
 INOUT drmaa_context_error_buf /* Contains a context sensitive error upon failed return */

If called before drmaa_init(), it SHALL return a comma delimited default DRMAA implementation contacts string, one per each DRM system provided implementation. If called after drmaa_init(), it SHALL return the selected contact string. The output (string) is Implementation dependent.

drmaa_get_contact routine SHALL return DRMAA_ERRNO_SUCCESS on success, otherwise DRMAA_ERRNO_INTERNAL_ERROR.

drmaa_version(major, minor, drmaa_context_error_buf)

OUT major /* major version number (non-negative integer) */
 OUT minor /* minor version number (non-negative integer) */
 INOUT drmaa_context_error_buf /*Contains a context sensitive error upon failed return*/

SHALL return the major and minor version numbers of the DRMAA library; for DRMAA 1.0, 'major' is 1 and 'minor' is 0.

drmaa_version routine SHALL return DRMAA_ERRNO_SUCCESS on success, otherwise DRMAA_ERRNO_INTERNAL_ERROR.

drmaa_get_DRM_system(drm_systems, drmaa_context_error_buf)

OUT drm_systems /* DRM systems information (string) *
INOUT drmaa_context_error_buf /* Contains a context sensitive error upon failed return*/

If called before drmaa_init(), it SHALL return a comma delimited DRM systems string, one per each DRM system provided implementation. If called after drmaa_init(), it SHALL return the selected DRM system. The output (string) is implementation dependent.

drmaa_get_DRM_system routine SHALL return DRMAA_ERRNO_SUCCESS
on success, otherwise DRMAA_ERRNO_INTERNAL_ERROR.

drmaa_get_DRMAA_implementation(drmaa_implementations, drmaa_context_error_buf)

OUT drmaa_implementations /* DRMAA implementations information (string) *
INOUT drmaa_context_error_buf /* Contains a context sensitive error upon failed return*/

If called before drmaa_init(), it SHALL return a comma delimited DRMAA implementations string, one per each DRM system provided implementation. If called after drmaa_init(), it SHALL return the selected DRMAA implementation. The output (string) is implementation dependent.

drmaa_get_DRM_implementation routine SHALL return DRMAA_ERRNO_SUCCESS
on success, otherwise DRMAA_ERRNO_INTERNAL_ERROR.

3.3 List of DRMAA Errors

----- these are relevant to all sections -----

DRMAA_ERRNO_SUCCESS

Routine returned normally with success.

DRMAA_ERRNO_INTERNAL_ERROR

Unexpected or internal DRMAA error like
system call failure, etc.

DRMAA_ERRNO_DRM_COMMUNICATION_FAILURE

Could not contact DRM system for this request.

DRMAA_ERRNO_AUTH_FAILURE

The specified request is not processed successfully due to
authorization failure.

DRMAA_ERRNO_INVALID_ARGUMENT

The input value for an argument is invalid.

DRMAA_ERRNO_NO_MEMORY

The system is unable to allocate resources.

----- init and exit specific -----

DRMAA_ERRNO_INVALID_CONTACT_STRING

Initialization failed due to invalid contact string.

DRMAA_ERRNO_DEFAULT_CONTACT_STRING_ERROR

DRMAA could not use the default contact string to connect to DRM system.

DRMAA_ERRNO_NO_DEFAULT_CONTACT_STRING_SELECTED

No default contact string was provided or selected.
DRMAA requires that the default contact string is selected when there is more than one default contact string due to multiple DRMAA implementations contained in the binary module.

DRMAA_ERRNO_DRMS_INIT_FAILED

Initialization failed due to failure to init DRM system.

DRMAA_ERRNO_ALREADY_ACTIVE_SESSION

Initialization failed due to existing DRMAA session.

DRMAA_ERRNO_NO_ACTIVE_SESSION

Exit routine failed because there is no active session.

DRMAA_ERRNO_DRMS_EXIT_ERROR

DRM system disengagement failed.

----- job attributes specific -----

DRMAA_ERRNO_INVALID_ATTRIBUTE_FORMAT

The format for the job attribute value is invalid.

DRMAA_ERRNO_INVALID_ATTRIBUTE_VALUE

The value for the job attribute is invalid.

DRMAA_ERRNO_CONFLICTING_ATTRIBUTE_VALUES

The value of this attribute is conflicting with a previously set attribute.

----- job submission specific -----

DRMAA_ERRNO_TRY_LATER

Could not pass job now to DRM system. A retry MAY succeed

however (saturation).

DRMAA_ERRNO_DENIED_BY_DRM

The DRM system rejected the job. The job will never be accepted due to DRM configuration or job template settings.

----- job control specific -----

DRMAA_ERRNO_INVALID_JOB

The job specified by the 'jobid' does not exist.

DRMAA_ERRNO_RESUME_INCONSISTENT_STATE

The job has not been suspended. The RESUME request SHALL NOT be processed.

DRMAA_ERRNO_SUSPEND_INCONSISTENT_STATE

The job has not been running, and it cannot be suspended.

DRMAA_ERRNO_HOLD_INCONSISTENT_STATE

The job cannot be moved to a HOLD state.

DRMAA_ERRNO_RELEASE_INCONSISTENT_STATE

The job is not in a HOLD state.

DRMAA_ERRNO_EXIT_TIMEOUT

We have encountered a time-out condition for `drmaa_synchronize` or `drmaa_wait`.

DRMAA_ERRNO_NO_RUSAGE

This error code is returned by `drmaa_wait()` when a job has finished but no `rusage` and `stat` data could be provided.

4. Security Considerations

The scheduling scenario described herein presumes that security is handled at the point of job authorization/execution on a particular resource. It is assumed that credentials owned by the process using the API are used by the DRMAA implementation to prevent abuse of the interface. In order to not unnecessarily restrict the spectrum of usable credentials, no explicit interface is defined for passing credentials.

Author Information

Roger Brobst
rbrobst@cadence.com
Cadence Design Systems, Inc
555 River Oaks Parkway
San Jose, CA 95134

Waiman Chan
waimanc@us.ibm.com
International Business Machines Corporation
2455 South Road
Poughkeepsie, NY 12601

Fritz Ferstl
fritz.ferstl@sun.com
Sun Microsystems GmbH
Dr.-Leo-Ritter-Str. 7
D-93049 Regensburg
Germany

Jeffrey T. Gardiner
gardiner@imaging.robarts.ca
Robarts Research Institute
PO Box 5015, 100 Perth Drive
London ON, N6A 5K8
Canada

Andreas Haas
andreas.haas@sun.com
Sun Microsystems GmbH
Dr.-Leo-Ritter-Str. 7
D-93049 Regensburg
Germany

Bill Nitzberg
nitzberg@pbspro.com
Altair Grid Technologies
2685 Marine Way, Suite 1209
Mountain View, CA 94043

Hrabri L. Rajic
hrabri.rajic@intel.com
Intel Americas Inc.
1906 Fox Drive
Champaign, IL 61820

John Tollefsrud
j.t@sun.com
Sun Microsystems
18 Network Circle, UMPK18-211
Menlo Park, CA 94025

Intellectual Property Statement

The GGF takes no position regarding the validity or scope of any intellectual property or other rights that might be claimed to pertain to the implementation or use of the technology described in this document or the extent to which any license under such rights might or might not be available; neither does it represent that it has made any effort to identify any such rights. Copies of claims of rights made available for publication and any assurances of licenses to be made available, or the result of an attempt made to obtain a general license or permission for the use of such proprietary rights by implementers or users of this specification can be obtained from the GGF Secretariat.

The GGF invites any interested party to bring to its attention any copyrights, patents or patent applications, or other proprietary rights which may cover technology that may be required to practice this recommendation. Please address the information to the GGF Executive Director.

Full Copyright Notice

Copyright (C) Global Grid Forum (date). All Rights Reserved.

This document and translations of it may be copied and furnished to others, and derivative works that comment on or otherwise explain it or assist in its implementation may be prepared, copied, published and distributed, in whole or in part, without restriction of any kind, provided that the above copyright notice and this paragraph are included on all such copies and derivative works. However, this document itself may not be modified in any way, such as by removing the copyright notice or references to the GGF or other organizations, except as needed for the purpose of developing Grid Recommendations in which case the procedures for copyrights defined in the GGF Document process must be followed, or as required to translate it into languages other than English.

The limited permissions granted above are perpetual and will not be revoked by the GGF or its successors or assigns.

This document and the information contained herein is provided on an "AS IS" basis and THE GLOBAL GRID FORUM DISCLAIMS ALL WARRANTIES, EXPRESS OR IMPLIED, INCLUDING BUT NOT LIMITED TO ANY WARRANTY THAT THE USE OF THE INFORMATION HEREIN WILL NOT INFRINGE ANY RIGHTS OR ANY IMPLIED WARRANTIES OF MERCHANTABILITY OR FITNESS FOR A PARTICULAR PURPOSE."