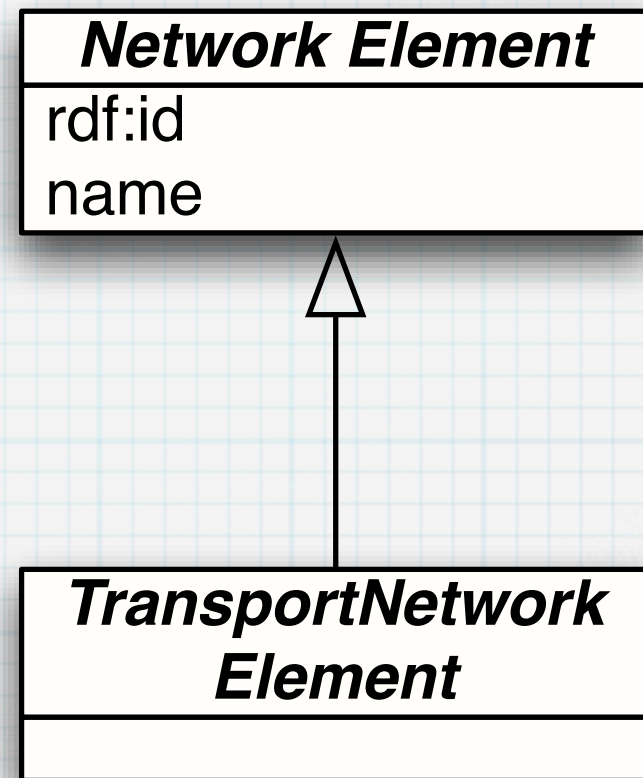


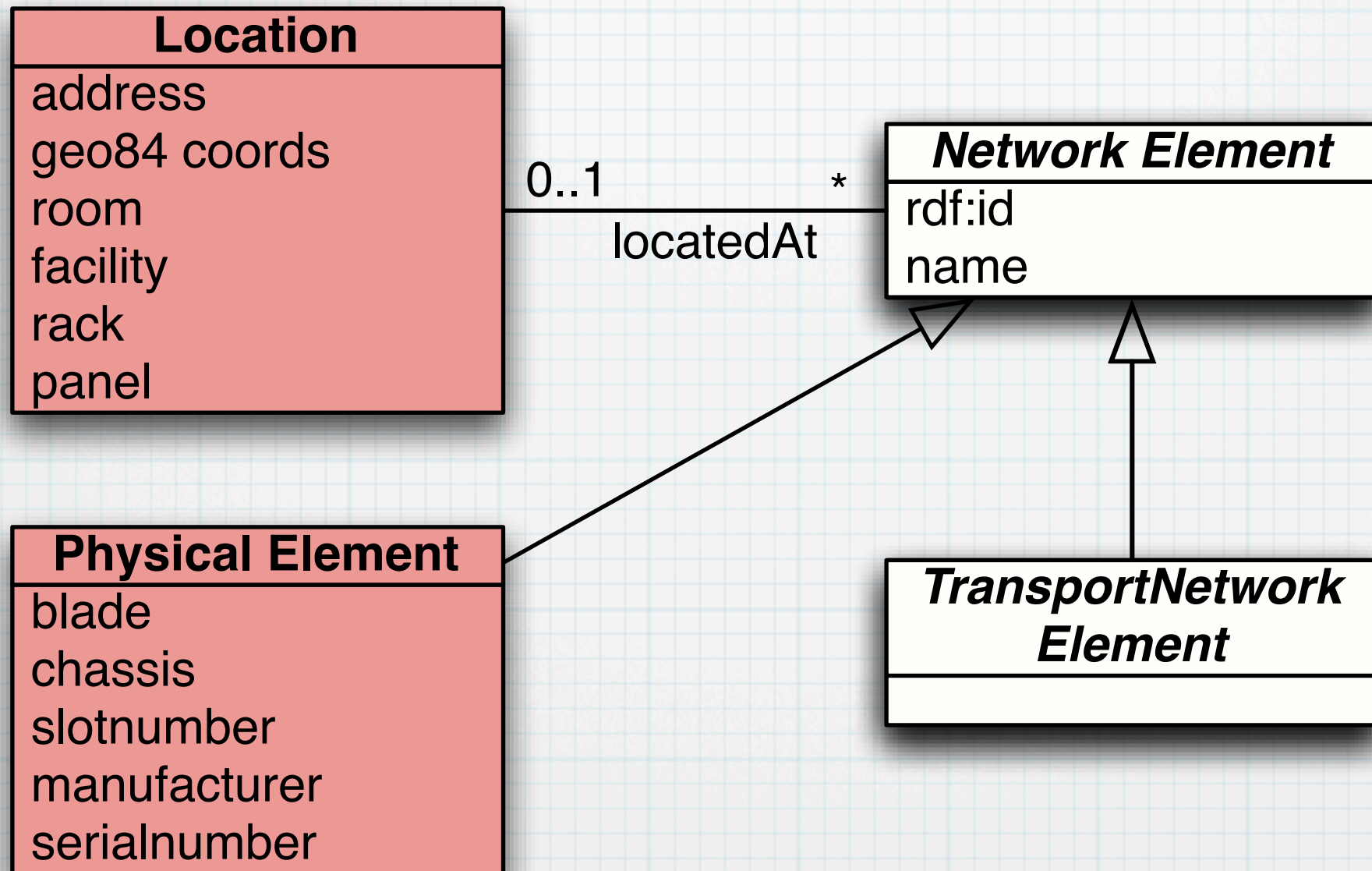
UML diagram of NDL

Jeroen van der Ham
vdham@uva.nl

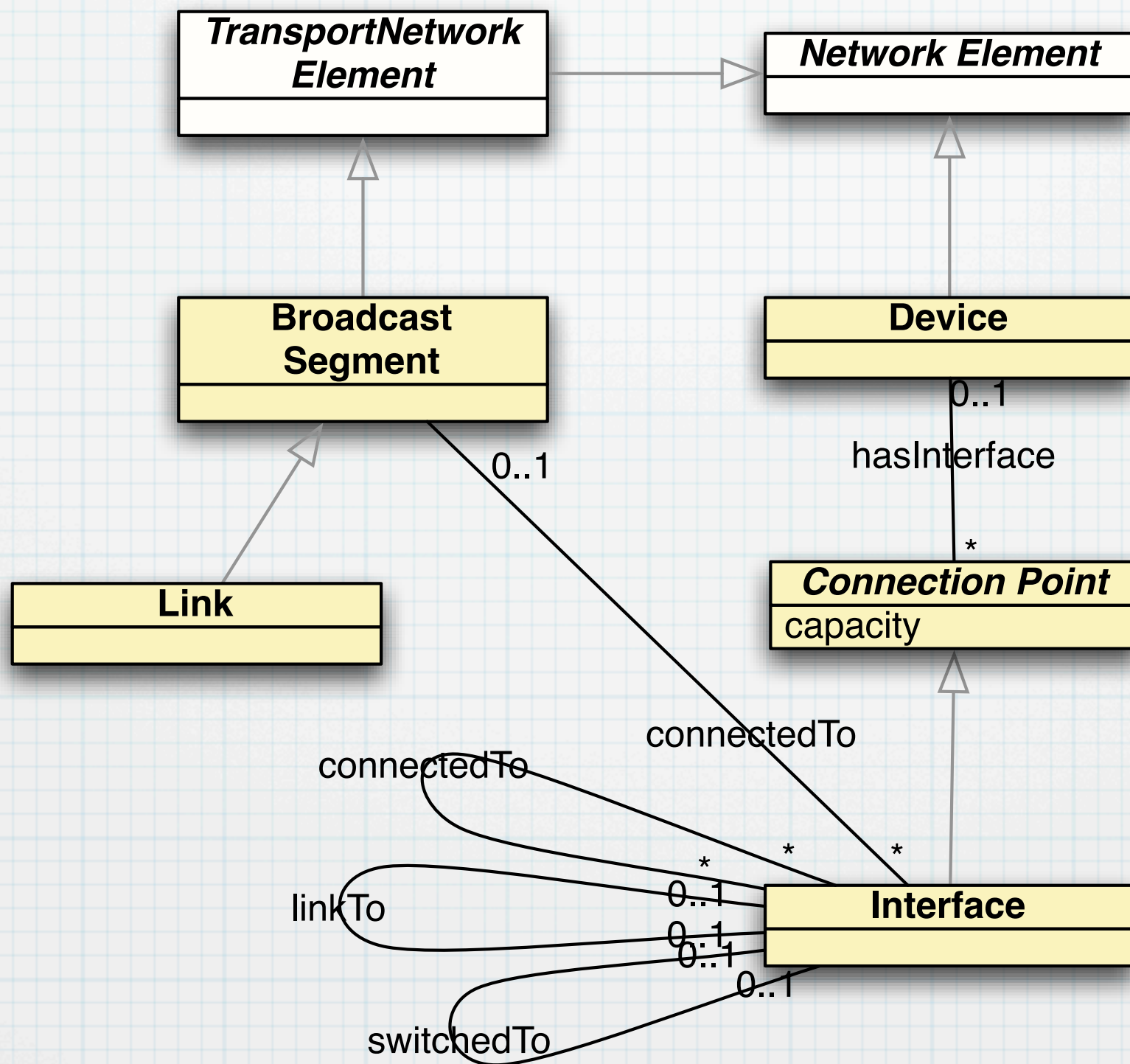
Basis

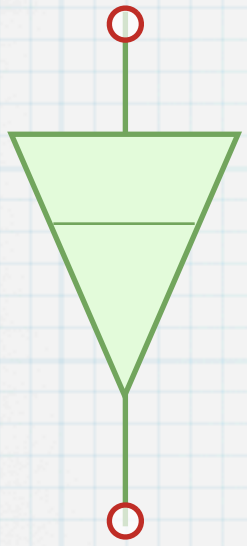


Basis

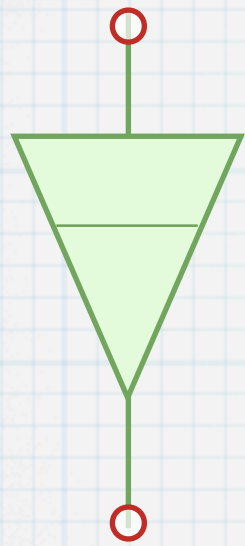


Topology





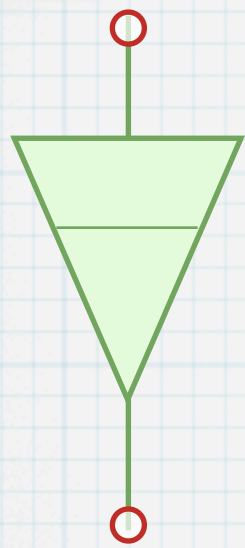
Adaptation



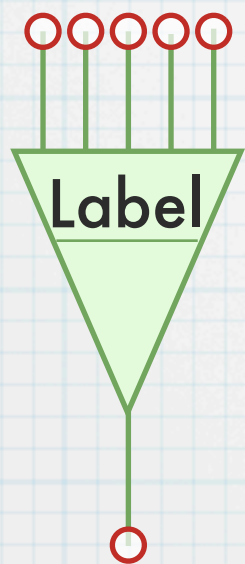
Adaptation

Adaptation

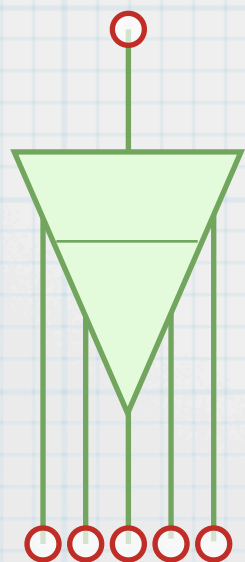
rdf:ID	→ URI
clientLayer	→ Layer
serverLayer	→ Layer



Adaptation



Multiplexing
Adaptation

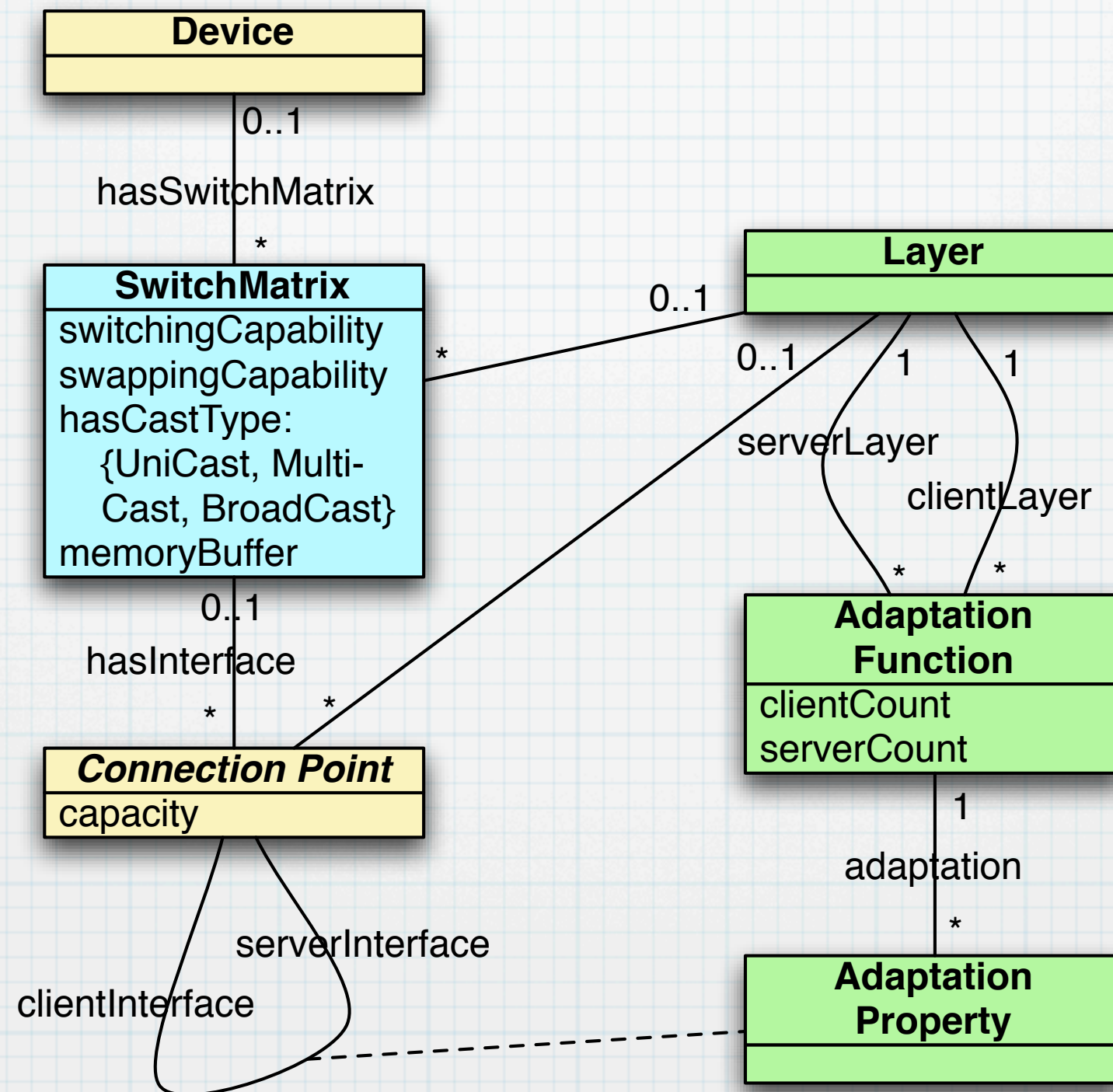


Inverse
Multiplexing
Adaptation

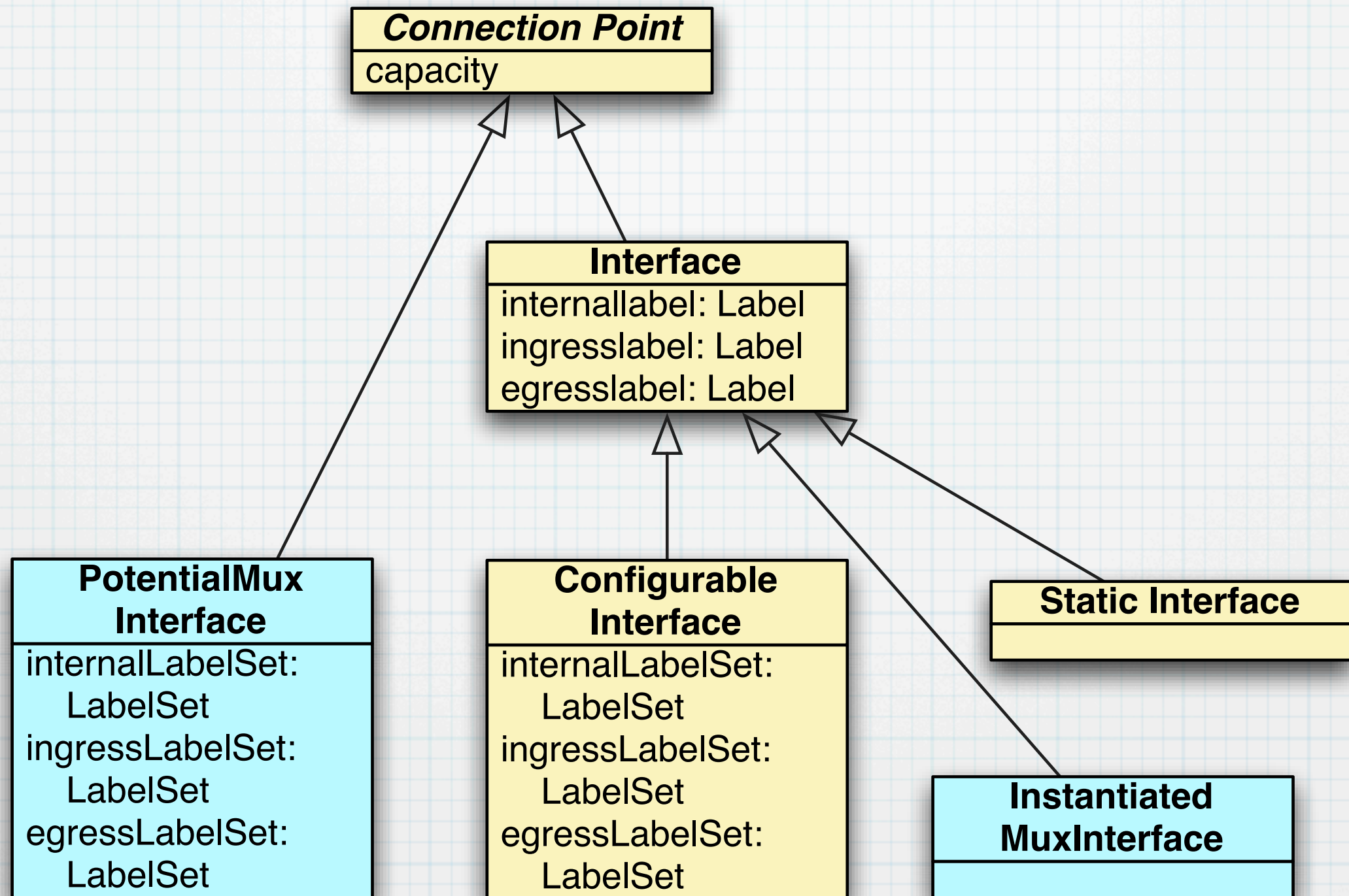
Adaptation

rdf:ID	→ URI
clientLayer	→ Layer
serverLayer	→ Layer
labels	→ LabelSet
allowed/available labels	
clientLayerCount	→ integer
>1 for multiplexing.	
serverLayerCount	→ integer
1 by default. >1 for inverse multiplexing.	
clientCapacity	→ float
provided max. capacity in Bytes/s to the client layer.	
serverCapacity	→ float
required min. capacity in Bytes/s per channel from the client layer.	
serverPropertyValues	→ PropertyValues

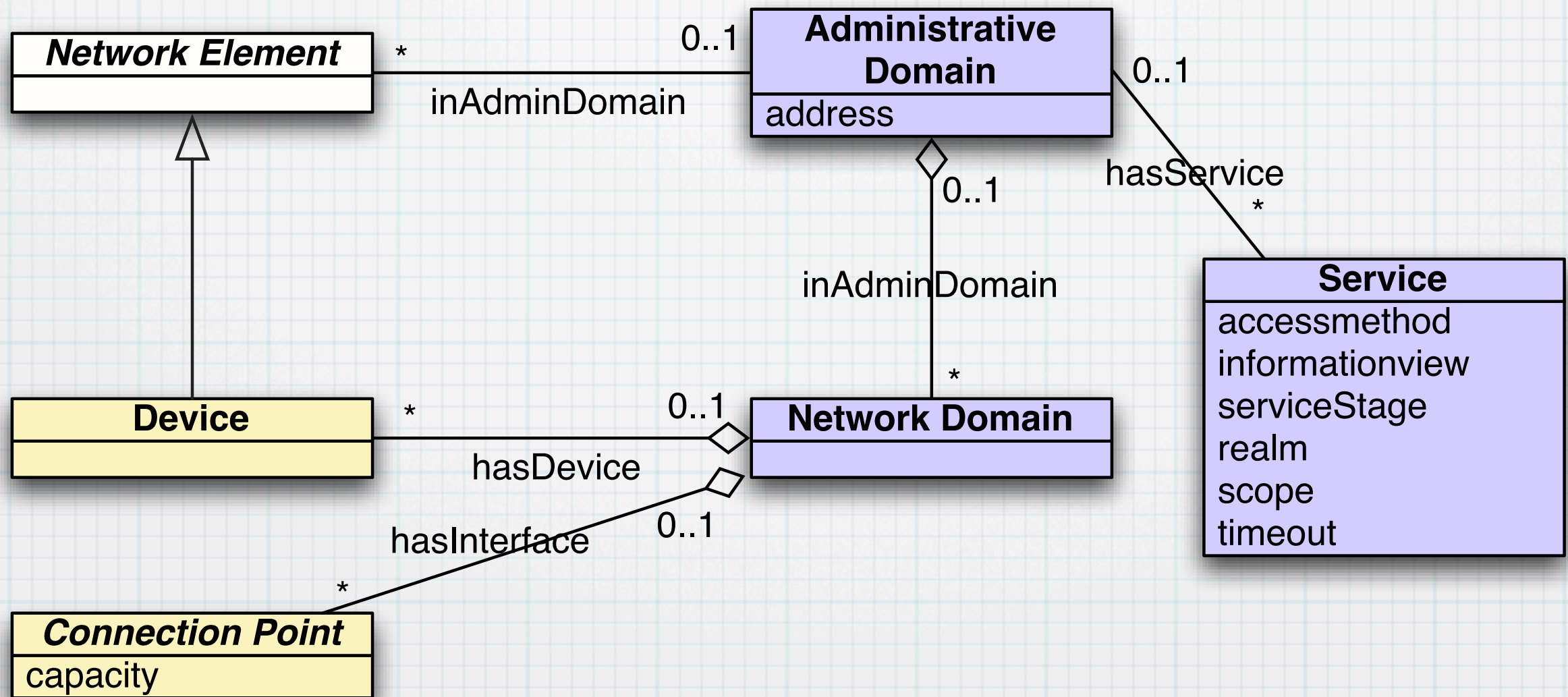
Adaptation & Layer



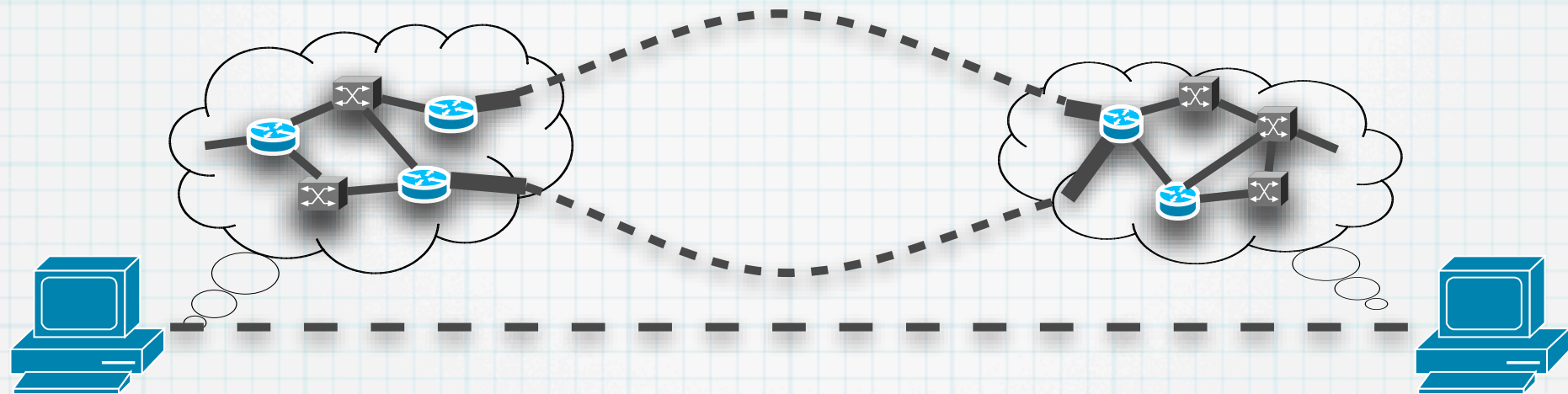
Interfaces



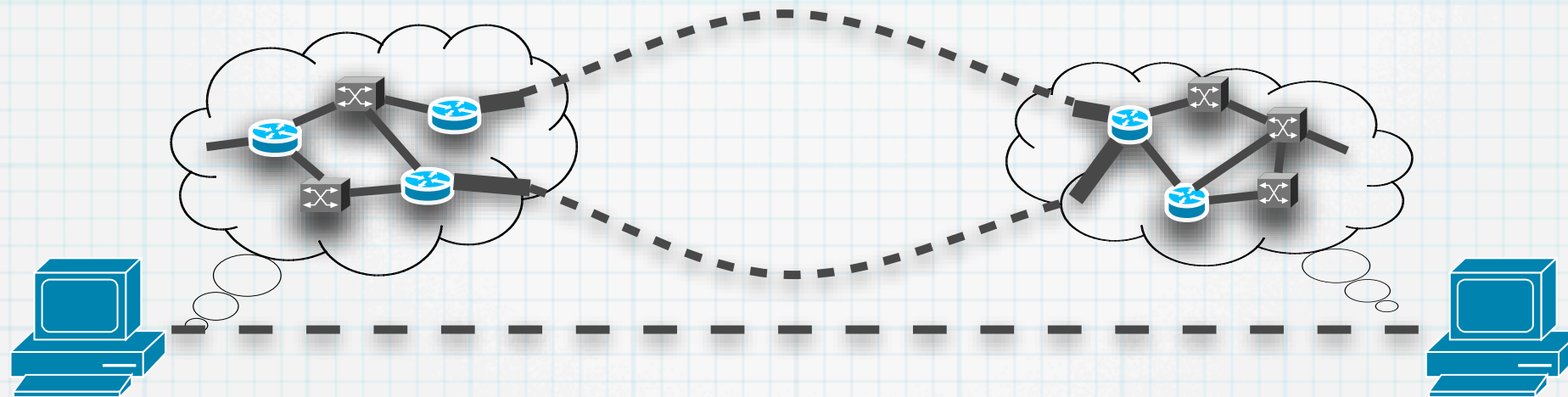
Domain



RDF seeAlso

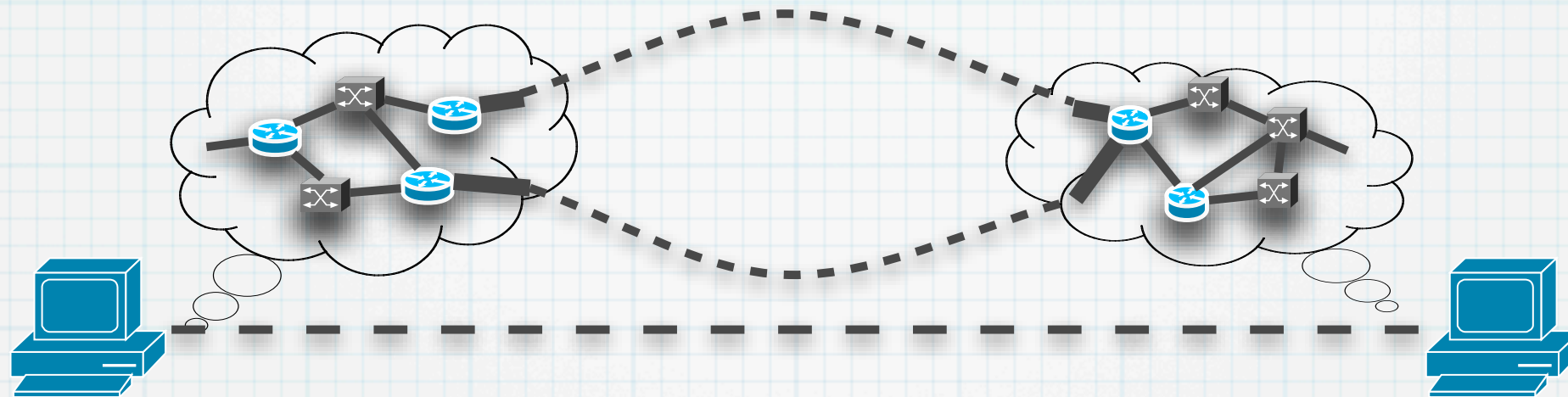


RDF seeAlso



```
<ndl:Interface rdf:about="http://netherlight.net/nl.rdf#external-if0">  
  <ndl:connectedTo  
    rdf:resource="http://example.org/example.rdf#external-if0"/>  
</ndl:Interface>  
<ndl:Interface rdf:about="http://example.org/example.rdf#external-if0">  
  <rdfs:seeAlso rdf:resource="http://example.org/example.rdf"/>  
</ndl:Interface>
```

RDF seeAlso



```
<ndl:Interface rdf:about="http://netherlight.net/nl.rdf#external-if0">  
  <ndl:connectedTo  
    rdf:resource="http://example.org/example.rdf#external-if0"/>  
</ndl:Interface>  
<ndl:Interface rdf:about="http://example.org/example.rdf#external-if0">  
  <rdfs:seeAlso rdf:resource="http://example.org/example.rdf"/>  
</ndl:Interface>
```

<http://ndl.uva.netherlight.nl/>
Multi-domain Pathfinding (SC06 Demo)

2007-12-03

