

The background of the slide is a photograph of a stage with heavy, dark red curtains. The curtains are closed and have a vertical pleated texture. The lighting is slightly brighter in the center, creating a subtle gradient across the fabric.

OGSA-RSS WG Session #1

GGF 16, Athens



GGF Intellectual Property Policy

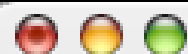
All statements related to the activities of the GGF and addressed to the GGF are subject to all provisions of Appendix B of GFD-C.1, which grants to the GGF and its participants certain licenses and rights in such statements. Such statements include verbal statements in GGF meetings, as well as written and electronic communications made at any time or place, which are addressed to any GGF working group or portion thereof,

Where the GFSG knows of rights, or claimed rights, the GGF secretariat shall attempt to obtain from the claimant of such rights, a written assurance that upon approval by the GFSG of the relevant GGF document(s), any party will be able to obtain the right to implement, use and distribute the technology or works when implementing, using or distributing technology based upon the specific specification(s) under openly specified, reasonable, non-discriminatory terms. The working group or research group proposing the use of the technology with respect to which the proprietary rights are claimed may assist the GGF secretariat in this effort. The results of this procedure shall not affect advancement of document, except that the GFSG may defer approval where a delay may facilitate the obtaining of such assurances. The results will, however, be recorded by the GGF Secretariat, and made available. The GFSG may also direct that a summary of the results be included in any GFD published containing the specification.

Session Overview

- Organizational issues
- What is OGSA-RSS?
- Service Description Document
- Discussion of Donals draft

Mailing list



New Message



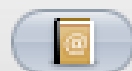
Send



Chat



Attach



Address



Fonts



Colors



Save As Draft

To: majordomo@ggf.org

Cc:

Subject:



Account: Mathias Dalheimer <dalheimer@itwm....>



Signature: ITWM address



PGP: ☐ Signed

Mathias Dalheimer <md@goniur>



☐ Encrypted

Keys

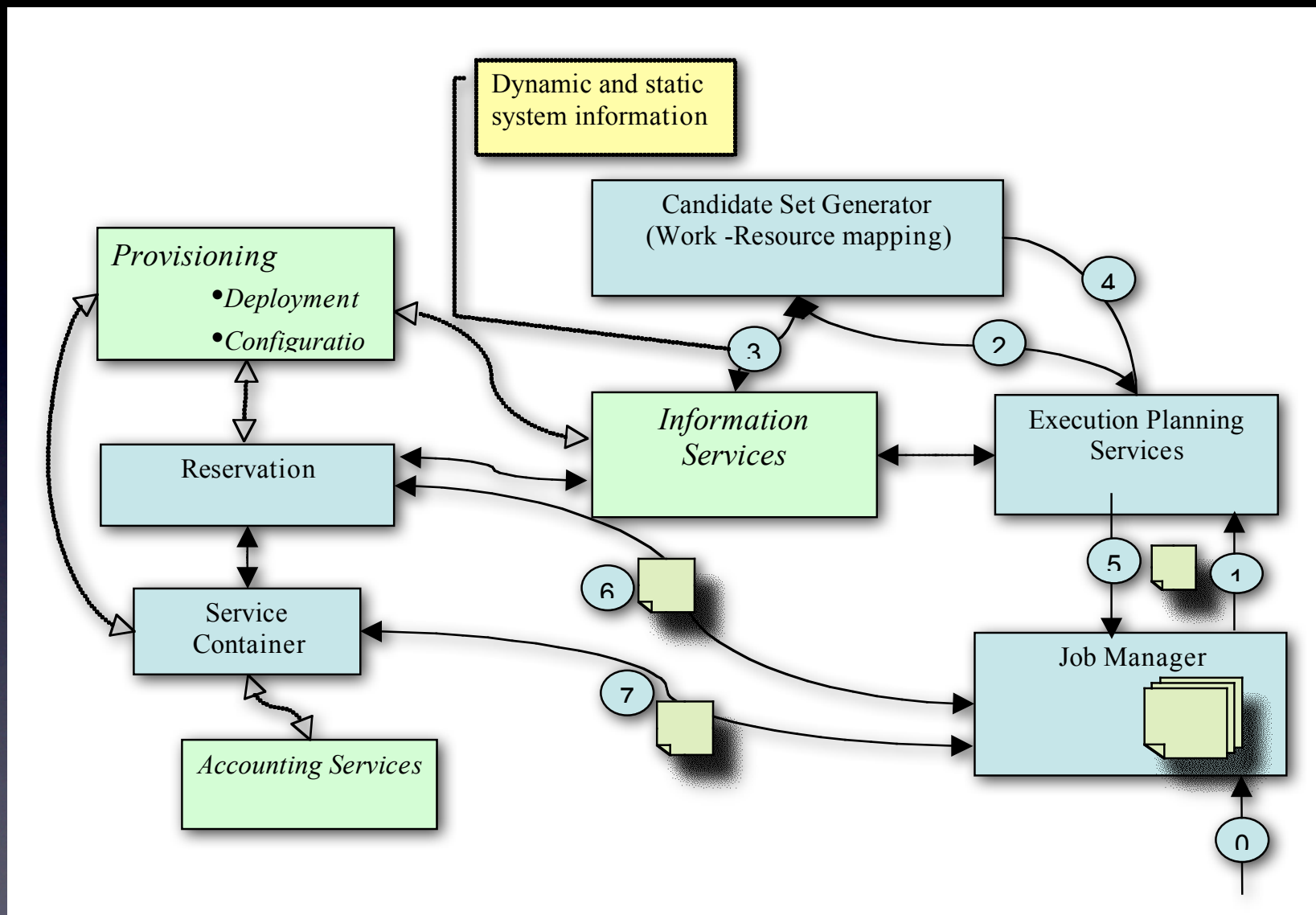


subscribe ogsa-rss-wg



A background image of a stage with heavy red curtains. The curtains are closed and have a vertical pleated texture. The lighting is slightly brighter in the center, creating a subtle gradient across the fabric.

OGSA-RSS in three
slides



taken from: OGSA draft V1.5

Candidate Set Generator

- OGSA draft V1.5:
 - determine the set of resources on which a unit of work can execute
 - “where is it possible to execute?”

Execution Planing System

- OGSA draft V1.5:
 - Takes candidate set and creates a schedule
 - “Where will it execute?”

The background of the slide is a photograph of a stage with heavy, dark red curtains. The curtains are closed and have a vertical pleated texture. The lighting is slightly brighter in the center, creating a subtle gradient across the fabric.

OGSA-RSS service description document

Service Description Document

GSA Use Cases

OGSA draft V1.0

Service
Description



```
graph LR; A[GSA Use Cases] --> D[Service Description]; B[OGSA draft V1.0] --> D;
```

The diagram illustrates the inputs to a Service Description. Two white rectangular boxes on the left, labeled 'GSA Use Cases' and 'OGSA draft V1.0', have yellow arrows pointing towards a white rectangular box on the right labeled 'Service Description'. The arrows are positioned one above the other, indicating that both inputs contribute to the final Service Description.



Function / Use case	Complex Workflows	Component-based Apps	Knowledge Grid	GRASP	Calana	GridWay	Viola Metasch.
Job submission	Yes	Yes	Yes	Yes	No	No	No
Component retrieval		Yes			No		No
Job Preprocessing	Yes	Yes			Yes		
Static information gathering	Yes		Yes	Yes	Yes	Yes	Yes
Application performance estimation	No	Yes	Yes		Yes		
Pre-selection of resources	Yes	Yes	Yes	Yes	Yes	Yes	Yes
Dynamic resource information query	Yes	Yes	Yes	Yes	No	Yes	No
Generation of schedule	Yes	Yes	Yes	Yes	Yes	Yes	Yes
Advance Reservation	Yes	Yes		Yes	Yes	No	Yes
Execution of workflow/ application start	Yes	Yes	Yes	Yes	No	Yes	No
Completion of workflow/ Job monitoring	Yes	Yes	Yes	Yes	No	Yes	No
Re-Scheduling	No	Yes	Yes	No	No	No	No
Billing	No	No	No	No	Yes		No
Coallocation		Yes		Yes	No	No	Yes
Data Handling	No	No	No	No	No	No	No

