



Grid Portals in Industry and Research

Workshop Enterprise Grid Solutions & Deployments

GGF, Brussels, September 21, 2004

Dr. Karsten Gaier, info@nice-italy.com

Contents

- NICE in a nutshell
- Overview of Grid elements
- Drivers to Grid success
- Grid solutions in Research
- Grid solutions in Business

NICE Background

- **Core business: Access to Grid Services**
 - EnginFrame Grid Portal & projects
 - Expertise in Grid Intelligence
- **Leadership in Grid deployment**
 - 3rd party products, projects, consulting
 - 8 years experience with **legacy & comm. apps**
 - Expertise in Enterprise Compute & Data Grids
- **Other relevant competencies**
 - Consulting for Grid-oriented system administration and server-based computing

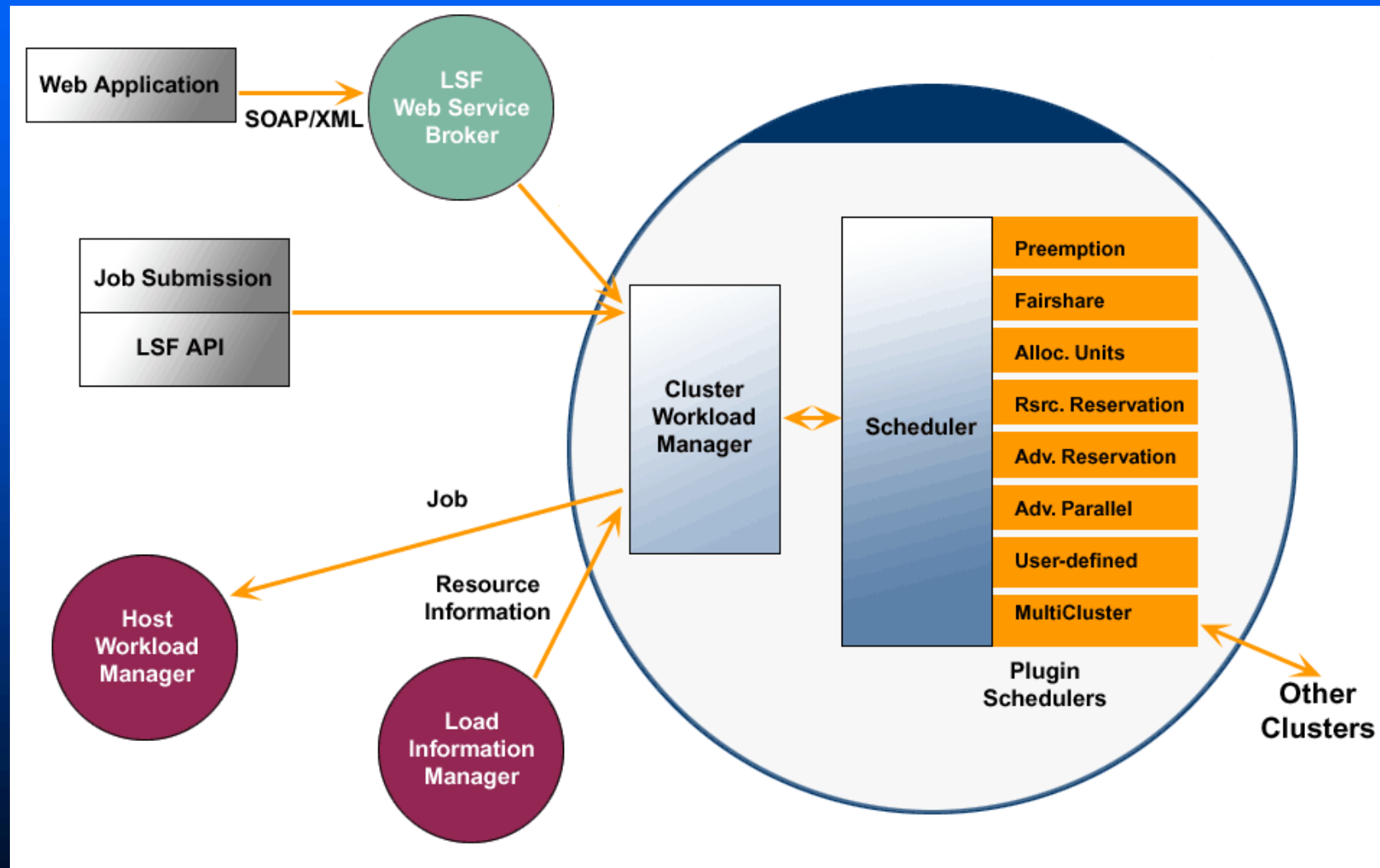
NICE Customers

- **Mechanical** Ferrari, Audi, BMW, FIAT Auto, CRF, Iveco, Elasis, UTS, FG-Powertrain, Marelli, Teksid, Brembo, Lear
- **Manufact.** Procter & Gamble
- **Electronics** STMicroelectronics, Accent, Alcatel, Ericsson, Micron, Siemens, SensorDynamics
- **Aerospace** Alenia, Avio, CIRA, Galileo Avionica, IDS
- **Energy** Agip, Shell, Ansaldo, ENEL, EniChem
- **BioTech** Pharmacia, (ENEA)
- **Telecom** Telecom Italia Lab, Pirelli
- **Research** ENEA, ICTP, INFN, CASPUR, CILEA, CNR, CRS4, Astronomical Obs., SDRC
- **Education** Scuola Normale Superiore di Pisa, Polit. Of Milan, Universities

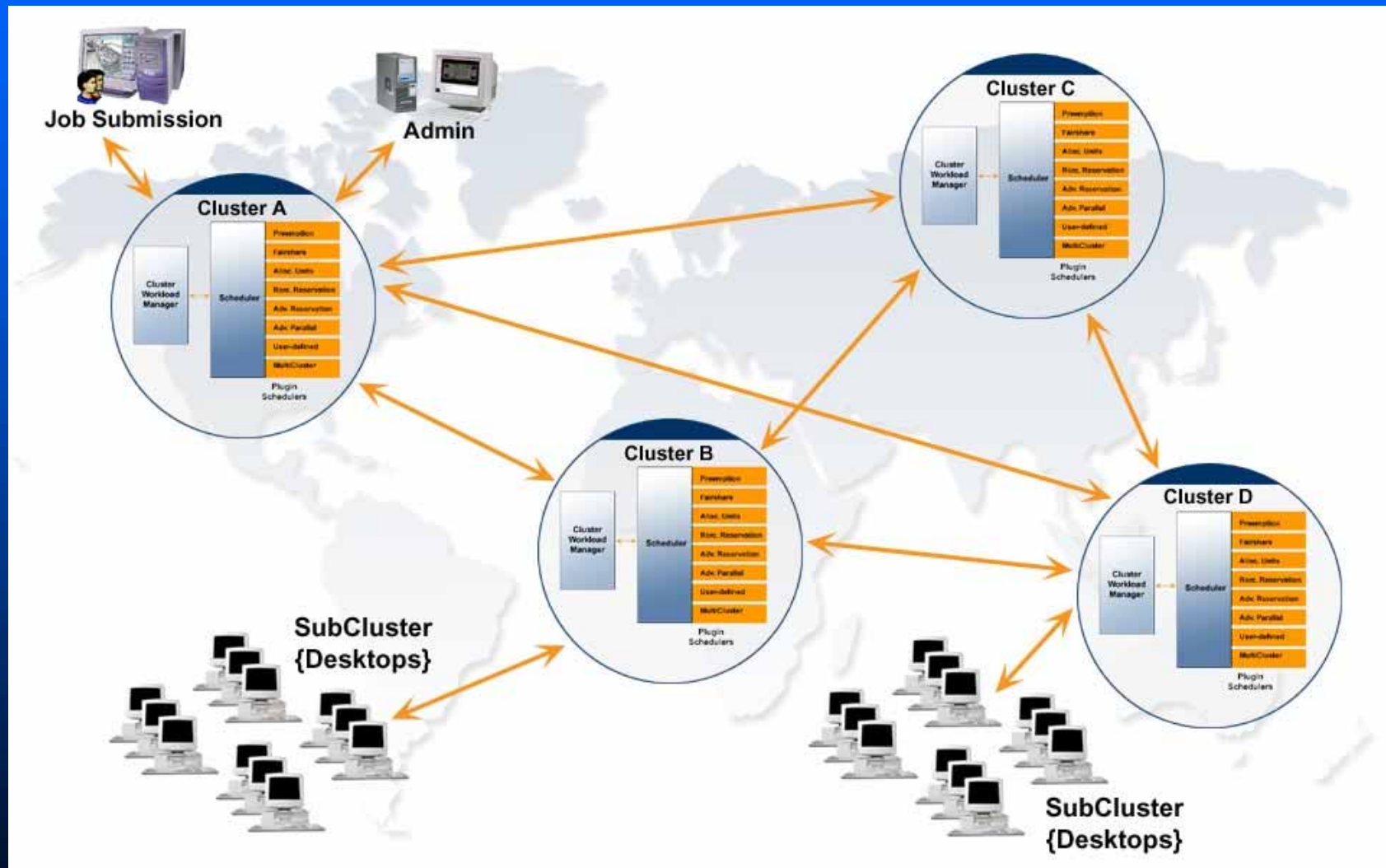
Contents

- NICE in a nutshell
- Overview of Grid elements
- Drivers to Grid success
- Grid solutions in Research
- Grid solutions in Business

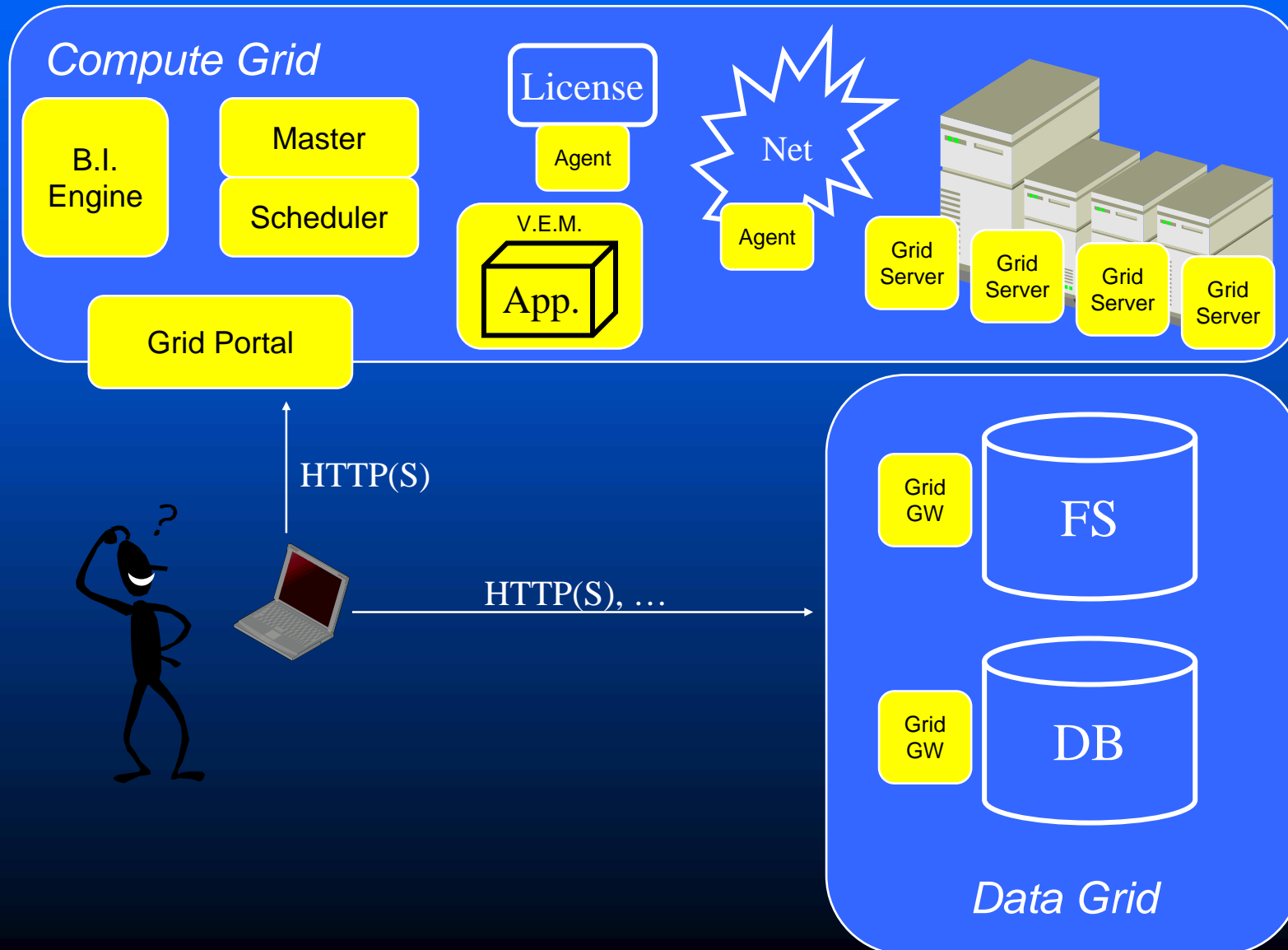
Departmental Grid



Enterprise Grid



Existing scenario simplified



Solution Components



Contents

- NICE in a nutshell
- Overview of Grid elements
- Drivers to Grid success
- Grid solutions in Research
- Grid solutions in Business

Drivers to Grid success

■ Focus on solution

- Applications are the key
- Most applications can work unchanged
- Proper balance between CPU - I/O - Network needs

■ Industry leading components

- Grid is new concept, but distributed computing has a long history

■ Flexible approach to the Grid project(s)

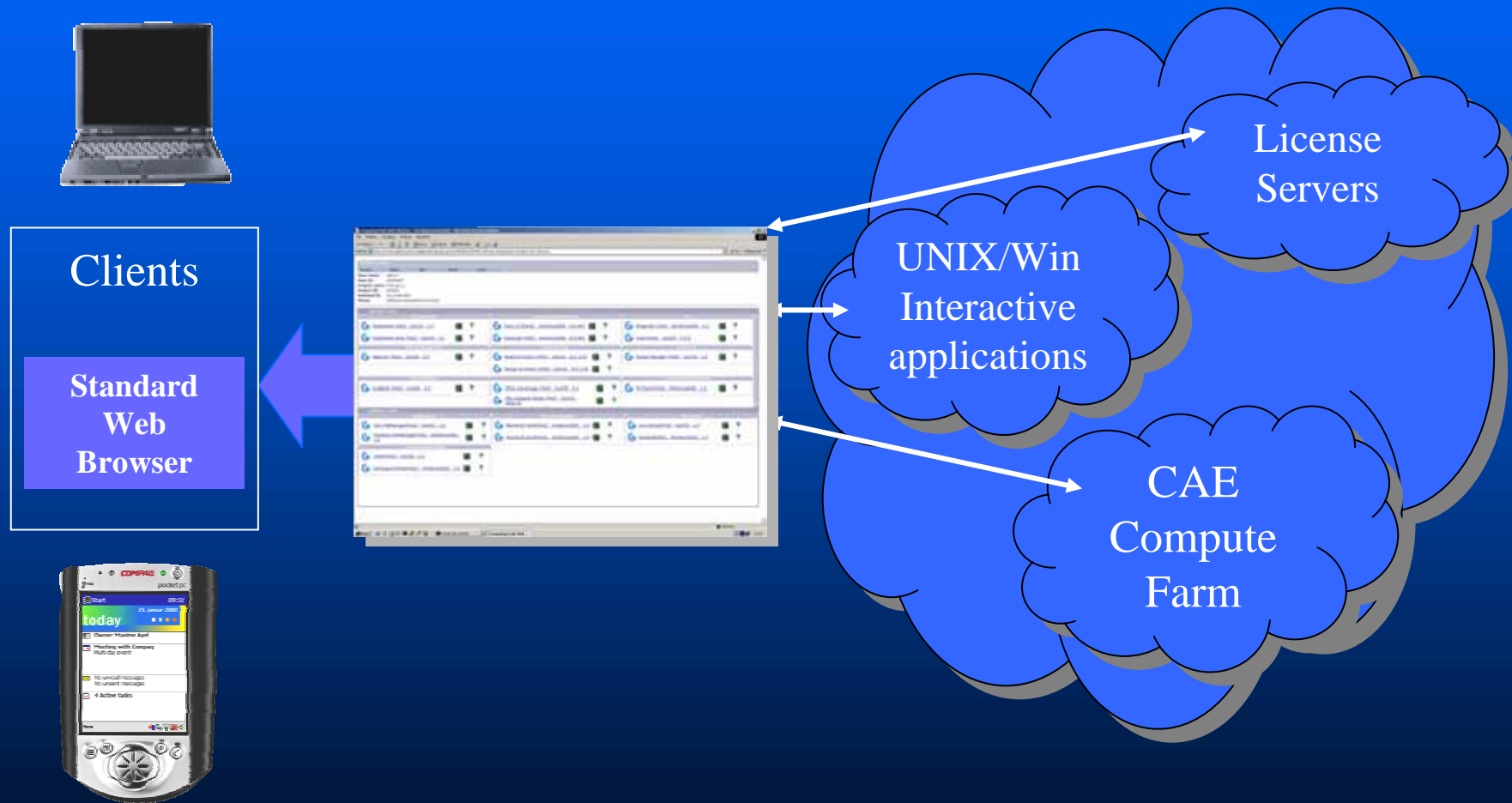
- **Affordable** *Bottom-up* approach to deliver immediate measurable advantages
- **Strategic** *Top-down* approach to re-structure IT infrastructure and get the full advantage

■ Competent Partnership

Grid Portal as Grid Drivers

- Basically, a Grid Portal aims at leveraging Grid usability by:
 - **Verticalizing** the service offering
 - Providing a **user-friendly** interface
 - **Lowering client requirements** for accessing the Grid
- The less you see the Grid, the easier you take advantage of it

Application delivery



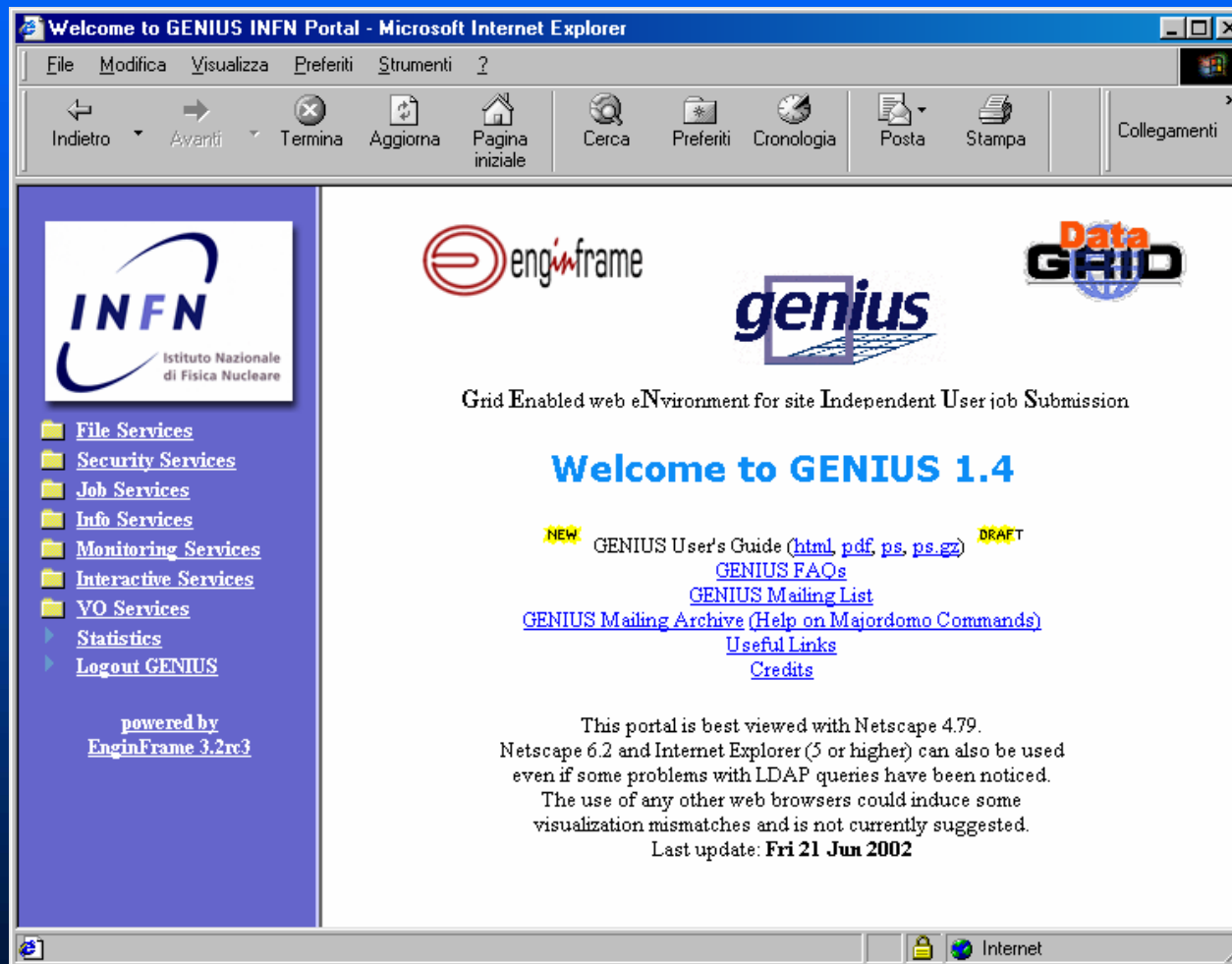
Why are Grid Portals build ?

- **Standardize** development processes
- **Simplify** and broaden the compute resource usage
- Improve users' **productivity**
 - Meta-Data, Defaults, Project-Management
- Realize compliance with **defined processes**
- **Reduce** user **errors** and misuse of the Grid
- Support **collaboration** with partners/suppliers
- Help being consistent with company's **security policies**

Contents

- NICE in a nutshell
- Overview of Grid elements
- Drivers to Grid success
- Grid solutions in Research
- Grid solutions in Business

Usable Grid services in R&D



- Data Grid
- EGEE
- GENIUS-Portal Users: more than 15 HEP world-wide org. and CERN
- Other institutes

Contents

- NICE in a nutshell
- Overview of Grid elements
- Drivers to Grid success
- Grid solutions in Research
- Grid solutions in Business

Grid for Business

- Address **IT productivity** in core business
 - **from one** to thousands of users
 - **from one** to thousands of CPUs
 - Giga-Terabyte storage
 - Usually one site, sometimes more sites
- Heavy restrictions
 - Intellectual Property and security are **critical**
 - Legacy applications and methodology
 - Policy management & short ROI

Case study: ROI in IT

■ Scenario:

- Industrial companies try to fill the gap with competitors
- CAE becomes strategic investment
- Implementing policies and methodology (e.g. Robust design and multi-objective optimization)

■ Problem:

- expensive IT resources (HW, *licenses*, storage)
- low ROA, unpredictable ROI
- complex for management
- complex deployment

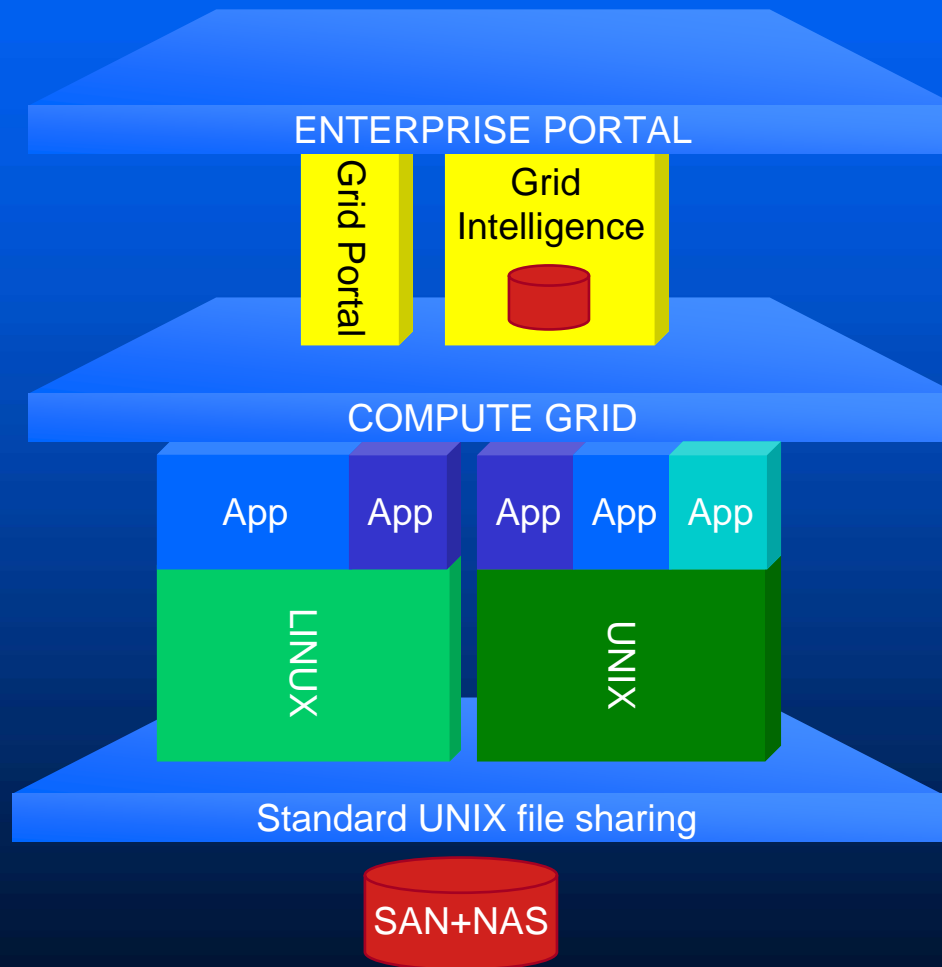
Grid + Grid Portal

Grid metrics

- Sites: 1
- Applications: 10+
- CPUs: 20-1000
- Users: 20-200

and BMW

Service transformation



→ Oracle WebPortal, ...

→ NICE EnginFrame

→ NICE InfoMiner

→ NICE DataGate

→ Platform LSF

→ Commercial CAD/CAE applications (off-the-shelf)

→ Frequent use of MPI and SMP parallel applications

→ Typical context: CFD, Crash, DMU, FEA, PLM, etc.

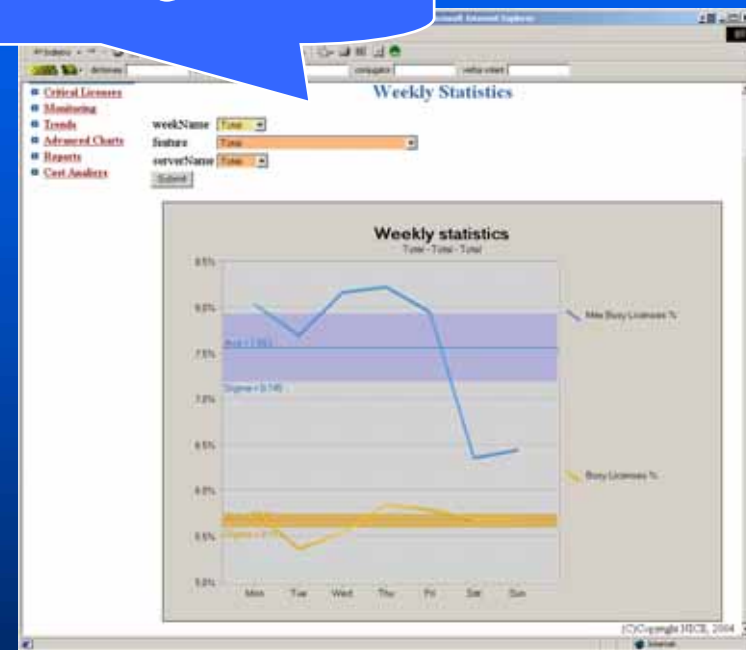
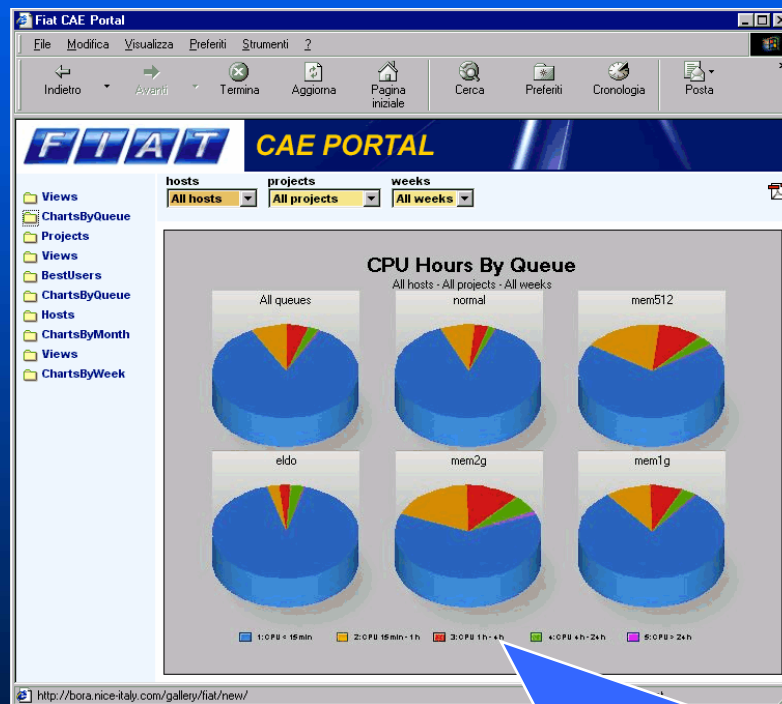
Grid benefits

- Fault tolerance
- Complexity reduction for engineers
- IT assets optimization and **consolidation**
- Flexible and dynamic enforcement of **policies and priorities**
- **Controlled** incremental growth
- Smooth management of usage peaks
- Low client **TCO**

- Bottom line:
 - “Unlimited capacity” enable new product design processes
 - Better products to the market, developed faster

Information to support decisions

License usage

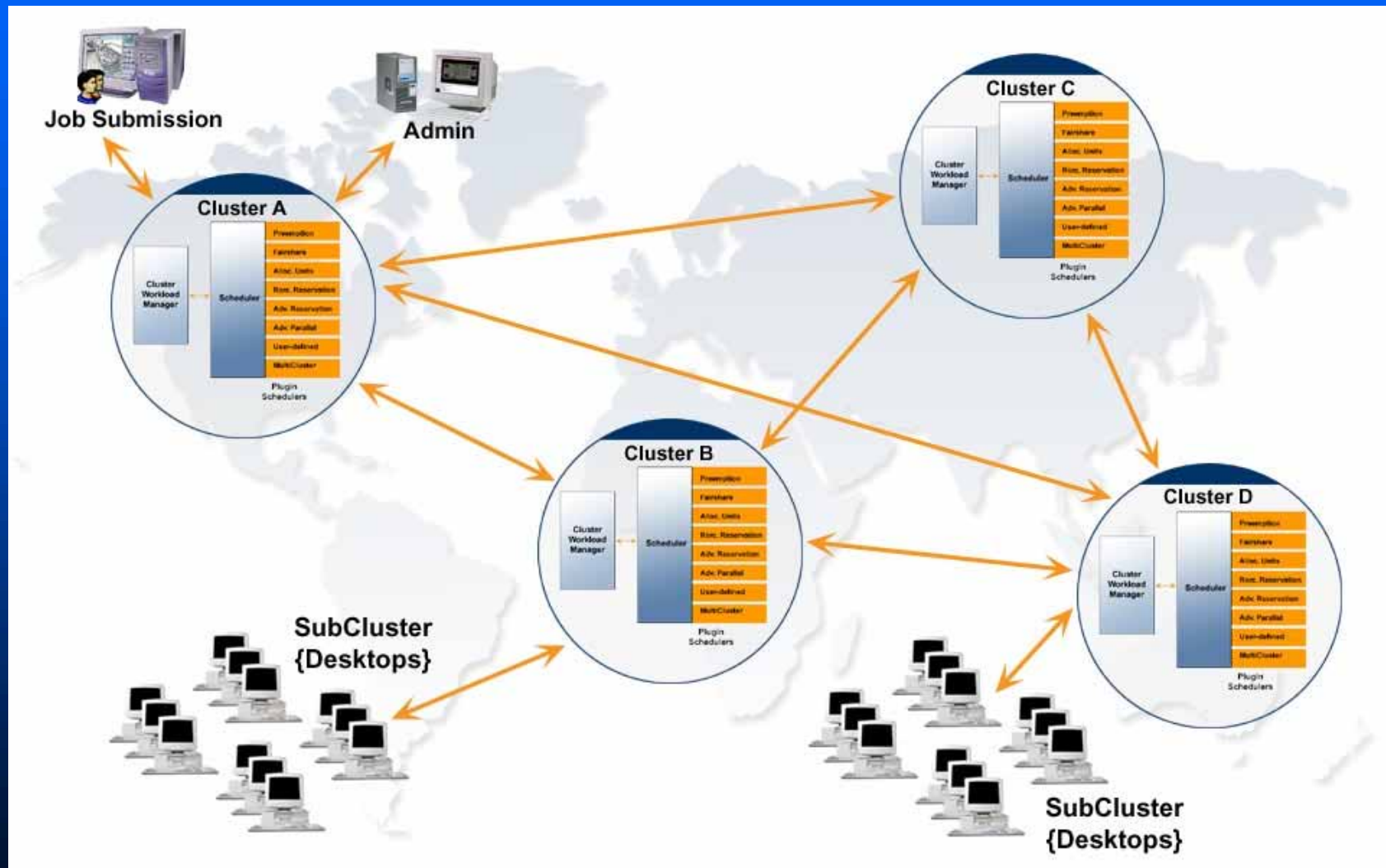


HW & Application usage

Grid Intelligence benefits

- HW/SW **efficiency insight**
- Resource usage **trends analysis**
- **Policy success** measurement
- Grid **ROI/ROA** evaluation
- Support for **charge-back** / pay-per-use approach
- Power project **profiling** for realistic **capacity planning**

Oil and Gas



Case Study: Oil and Gas

- Distributed Engineering Centers
- Distributed Compute Centers
- Computing follows the Sun
- Web Portal Standardization
- Integration into Company Portal Solutions

Oil and Gas Grid Portal

Shell.com - The Royal Dutch/Shell Group of Companies - Microsoft Internet Explorer provided by Comcast High-Speed Internet

File Edit View Favorites Tools Help

Back Forward Stop Search Favorites Media

Address http://www.enginframe.com/enginframe/gallery/shell.com.shell.eclipse.xml?_folder=root&_service=eclipse# Go

msn Search Highlight Options Google Search Web 30 blocked AutoFill Options

Links @hp HP Travel HP Capture TRAMS My Yahoo! My eBay Weather Corriere E-Trade 401k Fidelity II Sale Microsoft Windows Update Windows

Shell.com | Shell Directory

home | my data | my jobs | all jobs | cluster info | logout demo

Welcome to Shell.com

ECLIPSE

Utilities
Eclipse

Eclipse

Here is a demonstration of Eclipse service.

Simulator: Eclipse
Version: 2004a
Working directory: Select...
Input data file: Select...
☐ Use local configuration
Maximum runtime: 72:00 (hours:minutes)
Interconnect type: Gigabit
Number of processors: 1
Computing queue: owners
Submit

powered by enginframe

Start Shell.com - Th... Shell.com - The ... Inbox - Microsoft... eBay - Services ... Microsoft PowerP... 9:44 AM

Case Study: Data Exchange

- Collaboration problem in the supply chain
 - Many suppliers with different supported 3D models
 - Complex operations to convert files
 - Management not comfortable with uncontrolled data exchange
 - User friendliness

DataGate

Ferrari Datagate - Internal Users Area

File Modifica Visualizza Preferiti Strumenti ?

Indietro Avanti Termina Aggiorna Pagina iniziale Cerca Preferiti Cronologia Posta Collegamenti

DataGate Home Support Logout
powered by enginframe

Service offerings

- List Incoming Files
- List Outgoing Files
- Submit file

Submit file

Which supplier? NICE srl, Salvo Maccarone

Which File? Sfoglia...

☒ CAD file conversion?

Comments

This is the first draft.

To do:

- checking conformance to FEA rules
- boundary checking
- first documentation update

Process file

(C) Copyright NICE, 2001

Internet

Grid metrics

- Sites: 1
- Applications: <10
- CPUs: 2!
- Users: 300+

Grid benefits

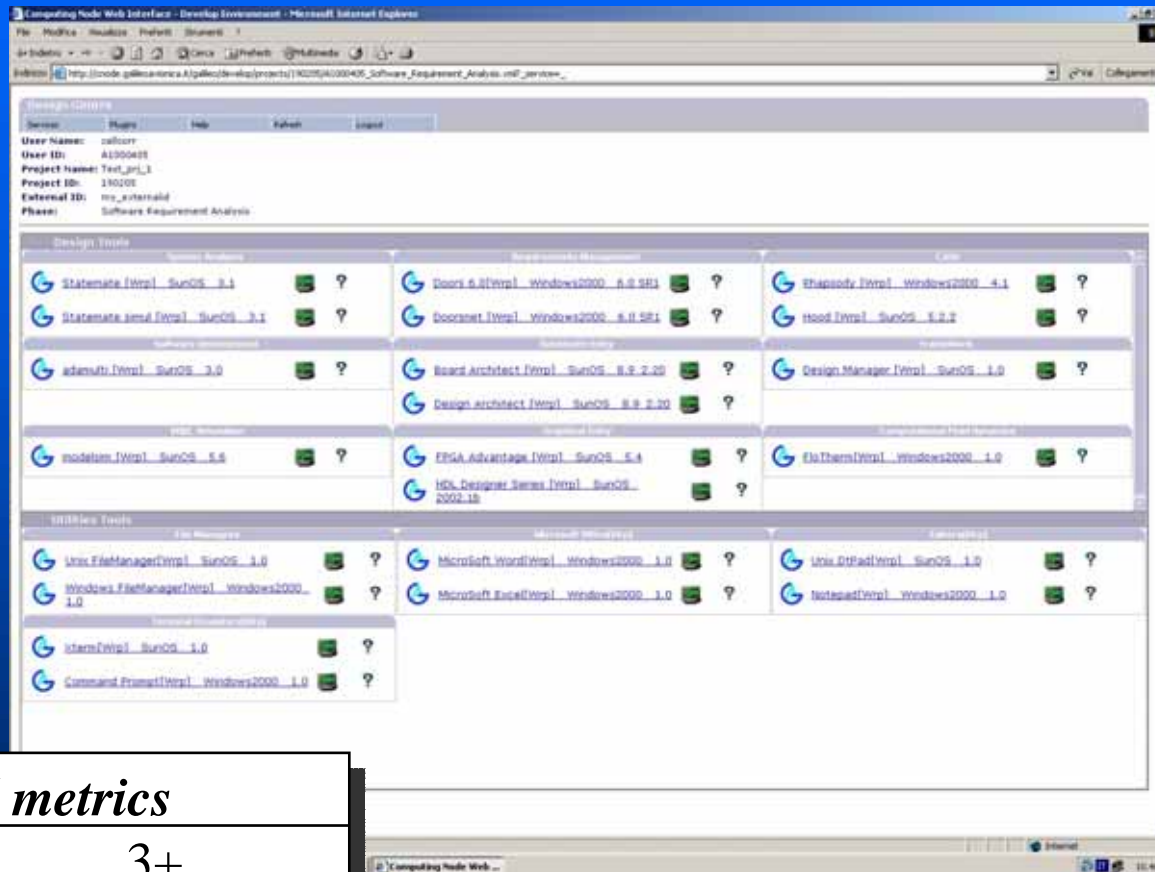
- Reduced costs in data exchange
 - *Calculated ROI on shipment savings is 4 months!*
- Complexity reduction for internal and external users
- Fault and license shortage tolerance
- Reduced network security issues
- Wide accessibility via virtually any browser
- Bottom line:
 - Full control of data coming in or out of the company

Case study: Consolidation

Company in the Defense sector

- Different companies have merged into one
- Virtualization of merged distributed IT resources
- Projects need common **coordination and collaboration**
 - No common design methodology
 - Duplicated licenses across different sites
 - Insufficient local resources
 - Limited communication

Grid Portal within Enterprise P.



Grid metrics

- Sites: 3+
- Applications: 20+
- CPUs: <20
- Users: 100+

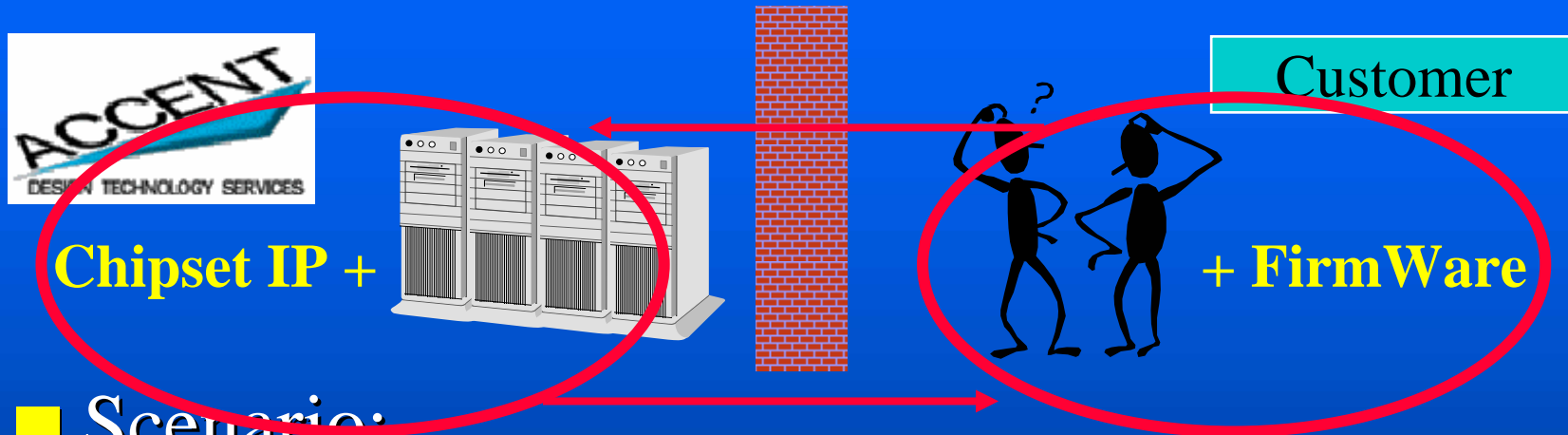
Centralized eDesign Services

Grid benefits

- Flexible software **license sharing** between sites and projects
- IT assets optimization and **consolidation**
- Flexible and dynamic enforcement of **policies and priorities**
- **Collaborative** product design across different sites
- Strong management of usage peaks
- Low client **TCO**

- Bottom line:
 - Enables product development in distributed design teams
 - Cuts inefficiencies in license management

Case Study: Intellectual Property



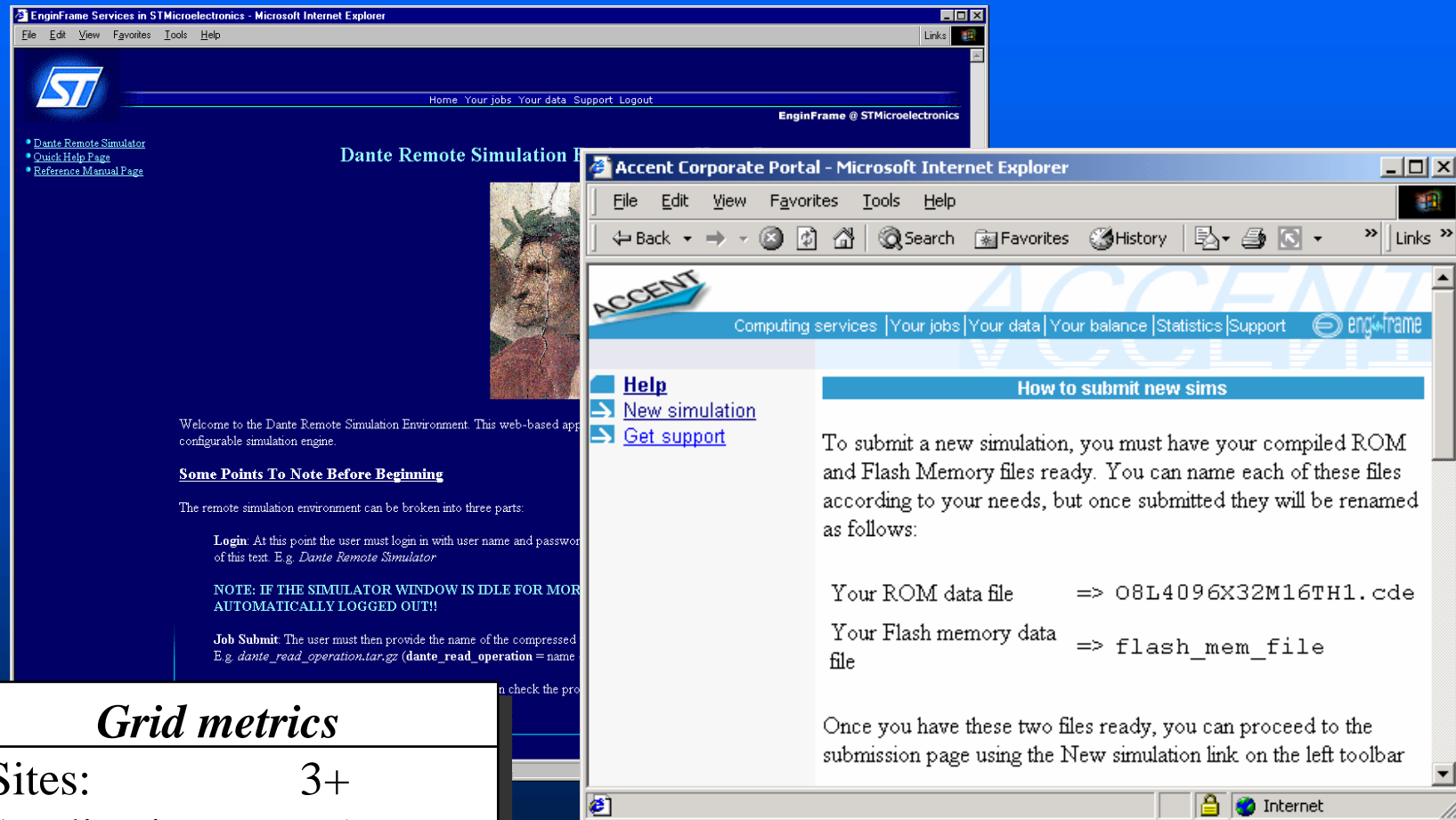
■ Scenario:

- Accent is designing a chipset for Customer
- Customer needs to test the firmware & software for this chipset

■ Problem:

- Intellectual Property cannot be disclosed

Grid + Grid Portal



Grid metrics

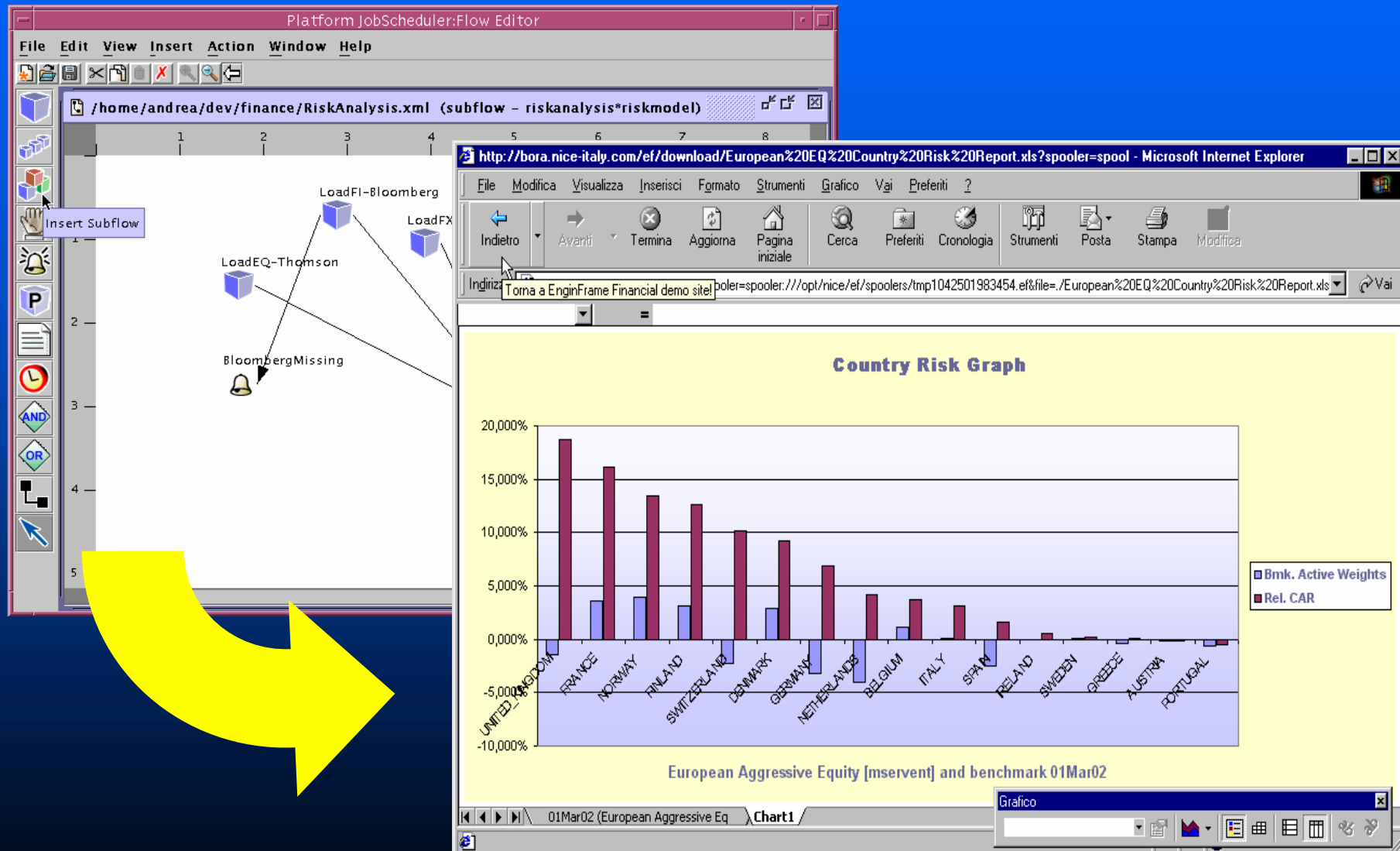
- Sites: 3+
- Applications: <5
- CPUs: 200-600
- Users: 100+

Black-box for EDA simulation

Grid benefits

- Refined **license sharing** between projects
- Flexible and dynamic enforcement of **policies and priorities** to handle hundreds of applications
- Optimized resource pools for usage peaks
- **Collaborative** product design with customers
- Full information on **resource usage** and accounting
- Bottom line:
 - Enables design projects to match their deadline
 - Enables on-demand collaboration with customers

Risk Analysis portal



Risk Analysis portal

■ Benefits:

- Utilize resources and optimize risk
- Lower Client TCO
- Easier service accessibility
- Enhance process monitoring and control
- Capitalize on existing expertise

Grid + Grid Portal benefits

- **Standardization** of access to applications
- Controlled & **structured** data management
- **Process** integration and deployment
- End user **productivity improvement**
- Enables **collaboration** inside the company and with customers or partners
- Resource usage **policy** enforcement
- Easy integration in **Enterprise Portals**

Thanks for your attention!



Q&A

e-mail: info@nice-italy.com