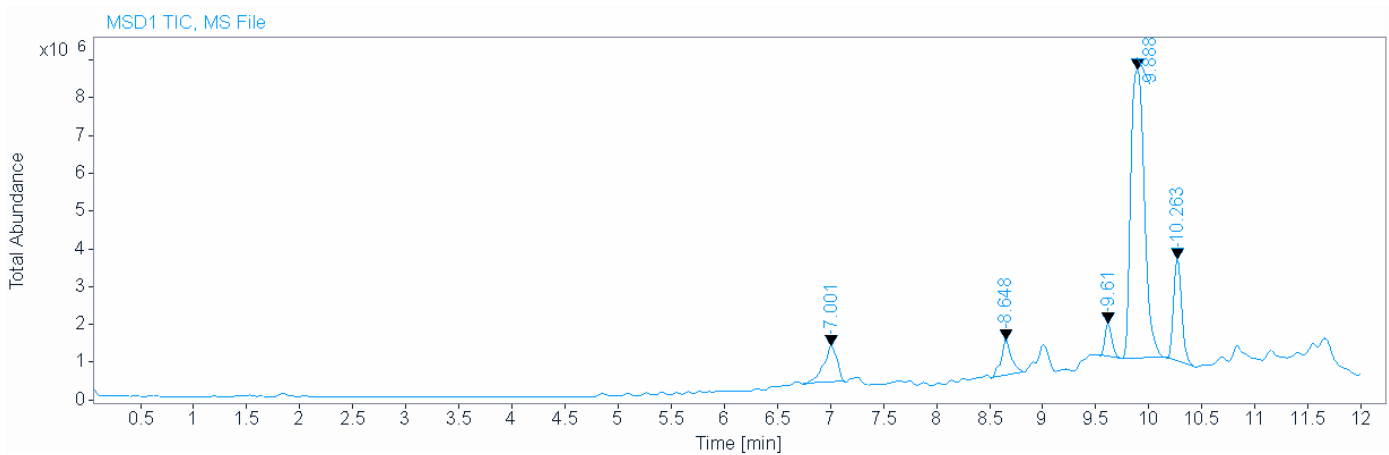
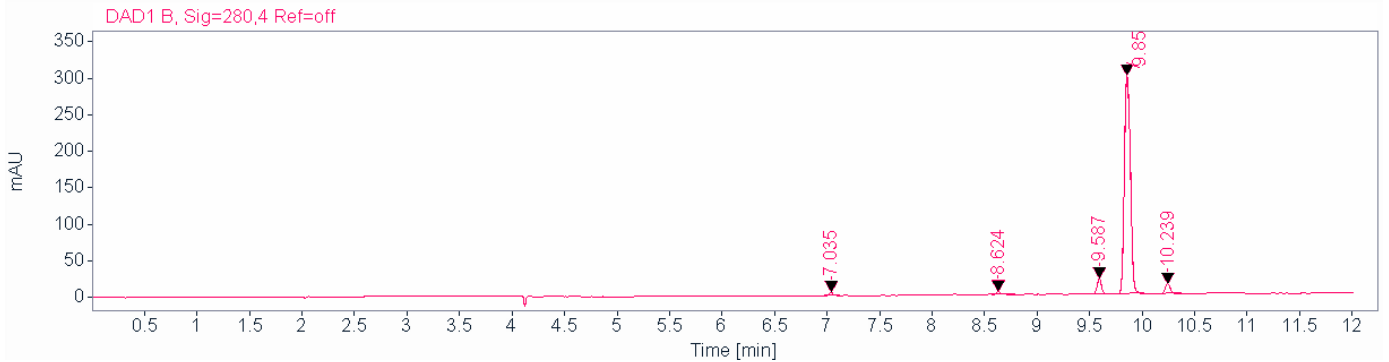
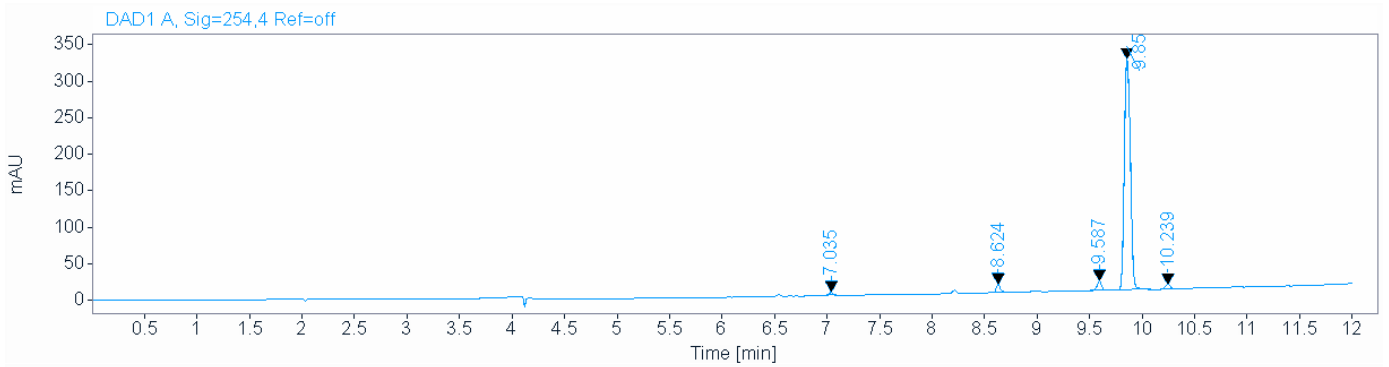


Single Injection Report



Agilent Technologies

Data file: C:\Users\Public\Documents\ChemStation\1\Data\TODD\EGT 2019-03-28 13-30-15\002-P1-D1-SSP 2018 4a.D
Sample name: SSP 2018 4a
Description:
Sample amount: 0.000 **Sample type:** Sample
Instrument: G25LCMS **Location:** P1-D1
Injection date: 3/28/2019 1:40:20 PM **Injection:** 1 of 1
Acq. method: EGT_OSM1.M **Injection volume:** 5.000
Analysis method: EGT_OSM1.M **Acq. operator:** SYSTEM
Last changed: 3/28/2019 2:36:35 PM
(modified after loading)



Single Injection Report



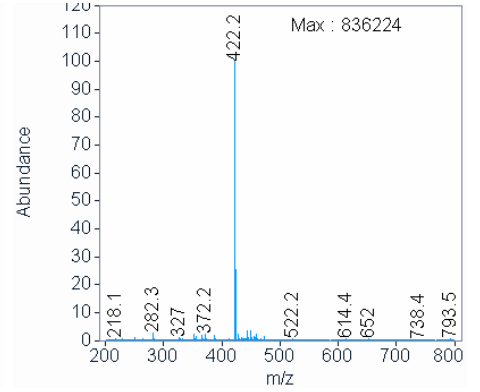
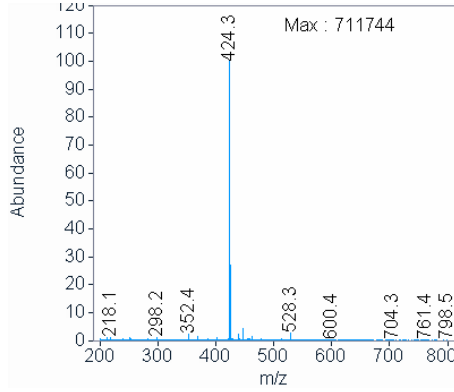
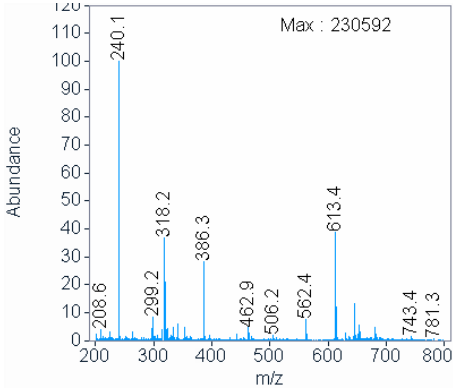
Agilent Technologies

Signal MSD1 TIC, MS File

Peak RT 7.001

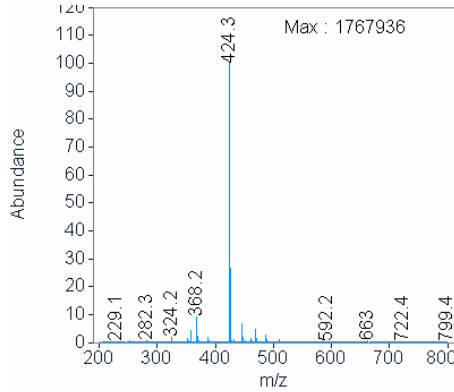
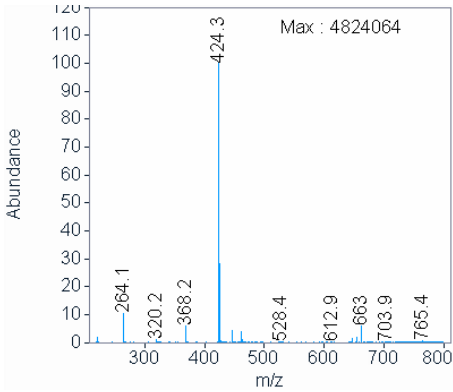
Peak RT 8.648

Peak RT 9.610



Peak RT 9.888

Peak RT 10.263



Single Injection Report



Agilent Technologies

Signal: DAD1 A, Sig=254,4 Ref=off

RT [min]	Type	Width [min]	Area	Height	Area%	Name
7.035	BB	0.0328	10.2374	4.9149	0.7460	
8.624	BB	0.0442	32.9725	11.2528	2.4029	
9.587	BB	0.0456	39.9978	13.4728	2.9148	
9.850	BB	0.0652	1267.7808	316.7110	92.3891	
10.239	BB	0.0537	21.2307	6.3228	1.5472	
	Sum		1372.2192			

Signal: DAD1 B, Sig=280,4 Ref=off

RT [min]	Type	Width [min]	Area	Height	Area%	Name
7.035	BB	0.0349	11.0842	4.8929	0.8302	
8.624	BB	0.0474	14.3916	4.4283	1.0779	
9.587	BB	0.0459	65.1058	21.7597	4.8761	
9.850	BB	0.0646	1197.2035	299.6176	89.6641	
10.239	BB	0.0552	47.4236	13.6106	3.5518	
	Sum		1335.2088			

Signal: MSD1 TIC, MS File

RT [min]	Type	Width [min]	Area	Height	Area%	Name
7.001	BB	0.1399	8869759.0000	979885.8750	8.6592	
8.648	BB	0.0935	6408896.0000	948454.8750	6.2568	
9.610	BB	0.0726	4049805.7500	891025.0000	3.9537	
9.888	BB	0.1438	68616576.0000	7649576.5000	66.9878	
10.263	BB	0.0816	14486457.0000	2725244.5000	14.1426	
	Sum		102431493.7			