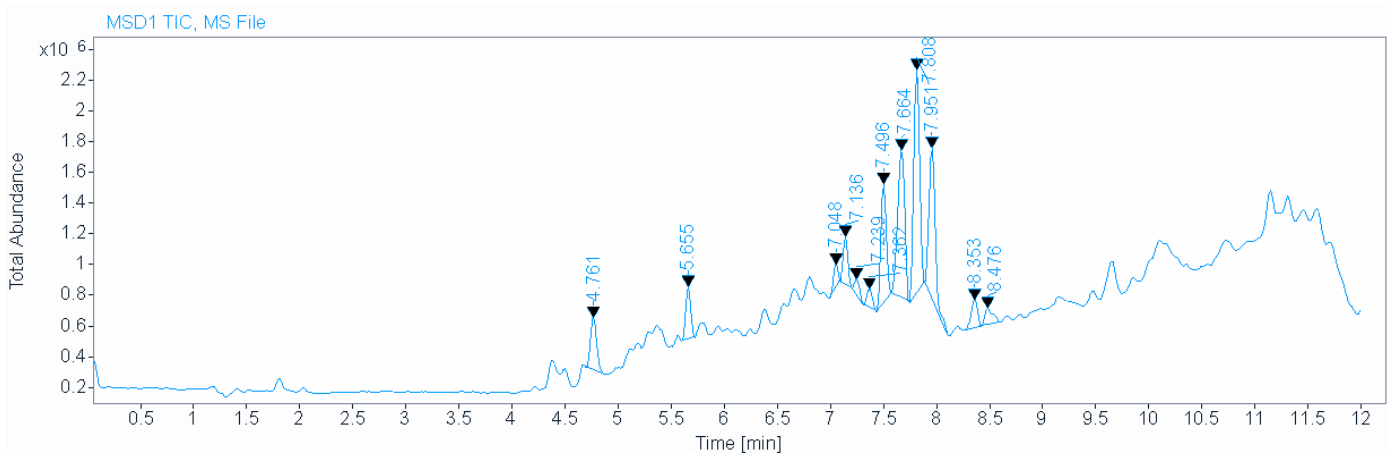
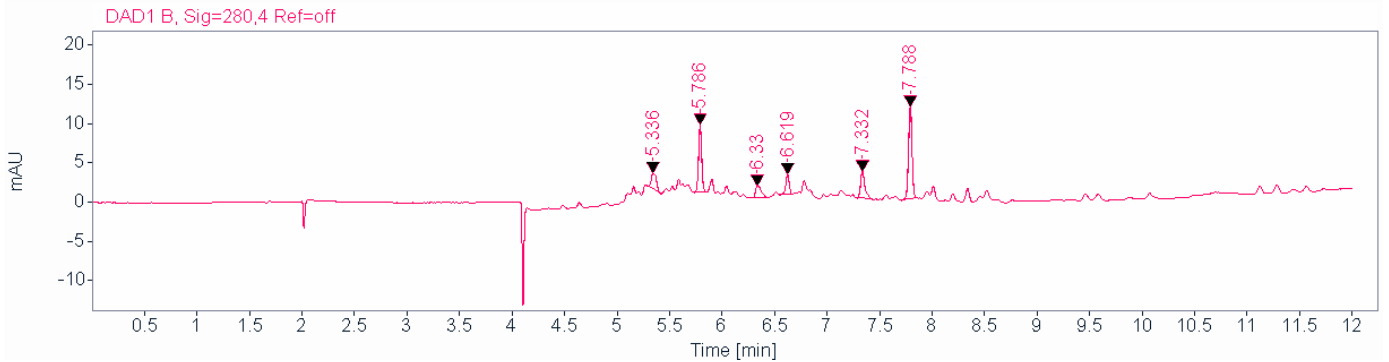
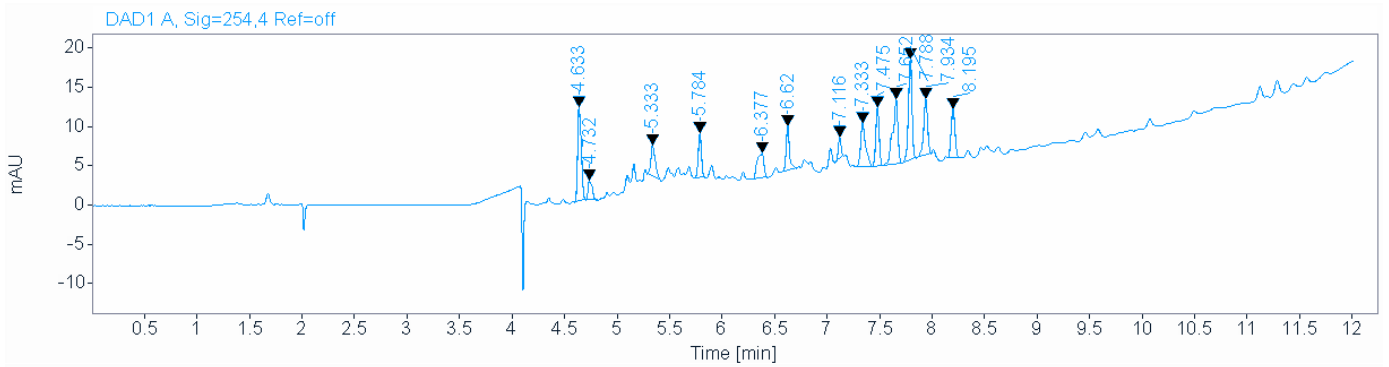


# Single Injection Report



Agilent Technologies

**Data file:** C:\Users\Public\Documents\ChemStation\1\Data\TODD\EGT 2019-03-28 13-30-15\004-P1-D3-SSP 2018 4c.D  
**Sample name:** SSP 2018 4c  
**Description:**  
**Sample amount:** 0.000 **Sample type:** Sample  
**Instrument:** G25LCMS **Location:** P1-D3  
**Injection date:** 3/28/2019 2:10:31 PM **Injection:** 1 of 1  
**Acq. method:** EGT\_OSM1.M **Injection volume:** 5.000  
**Analysis method:** EGT\_OSM1.M **Acq. operator:** SYSTEM  
**Last changed:** 3/28/2019 2:47:58 PM



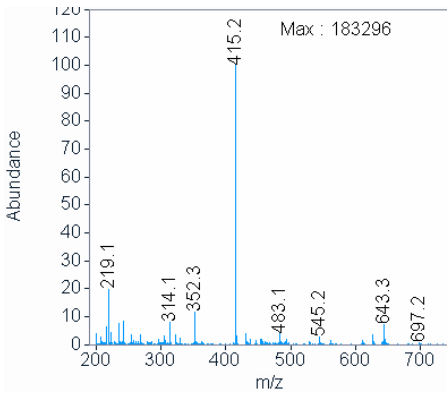
Signal MSD1 TIC, MS File

# Single Injection Report

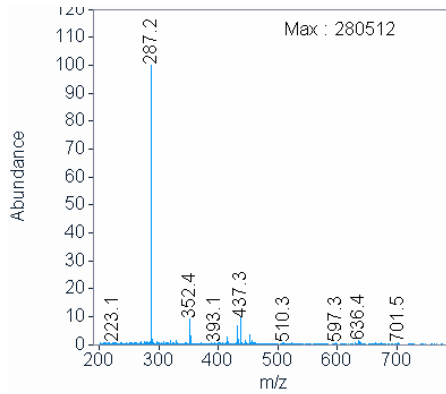


Agilent Technologies

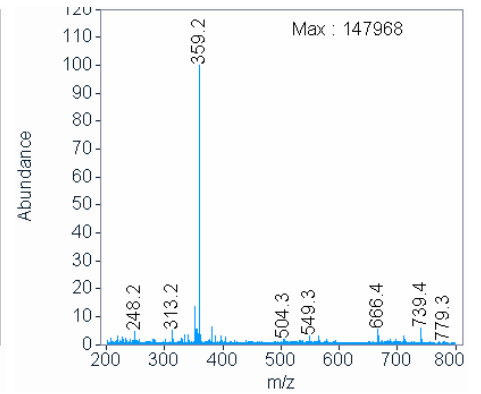
Peak RT 4.761



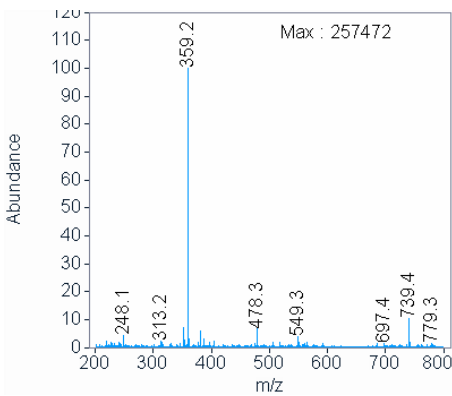
Peak RT 5.655



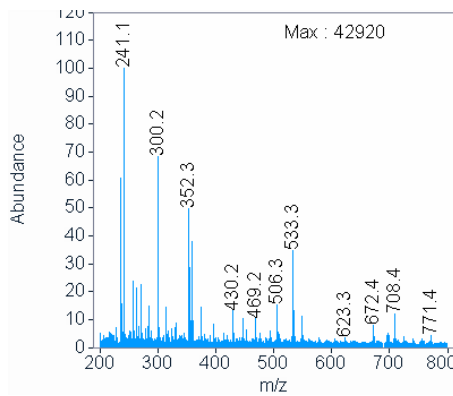
Peak RT 7.048



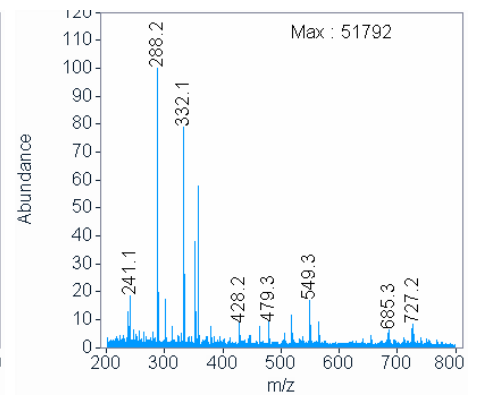
Peak RT 7.136



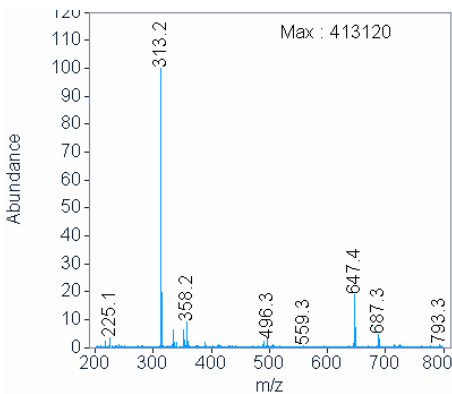
Peak RT 7.239



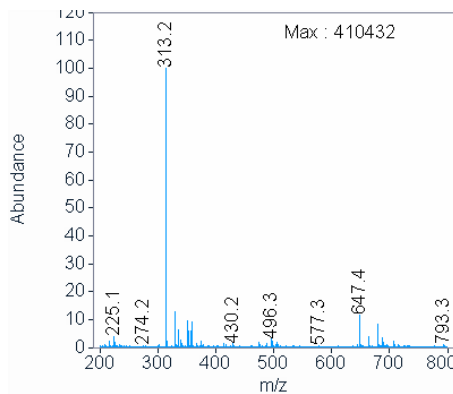
Peak RT 7.362



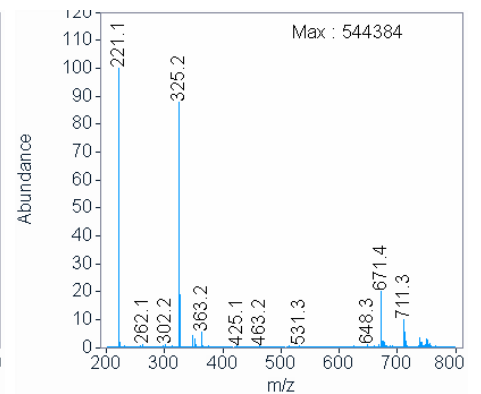
Peak RT 7.496



Peak RT 7.664



Peak RT 7.808



# Single Injection Report

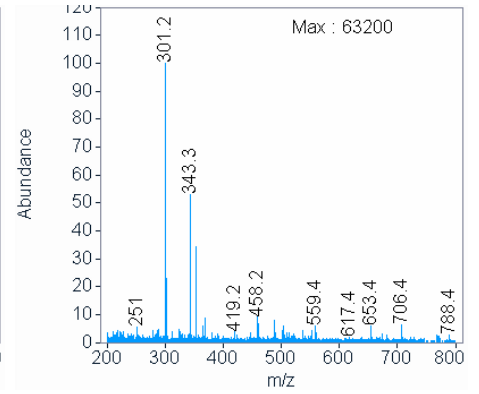
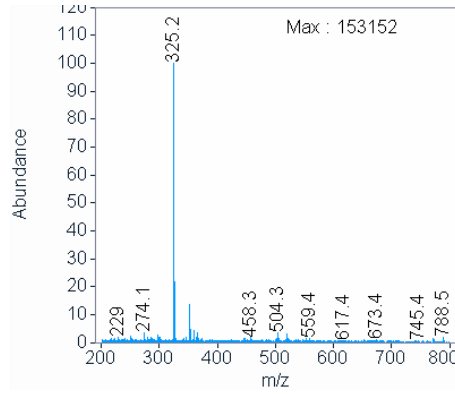
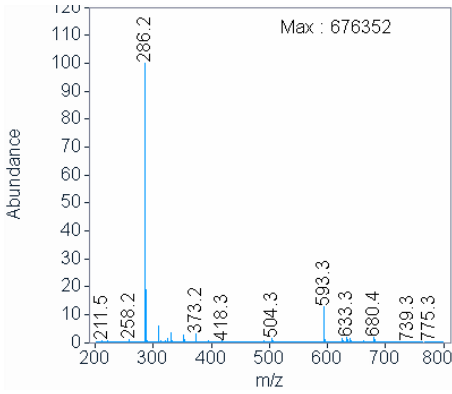


Agilent Technologies

Peak RT 7.951

Peak RT 8.353

Peak RT 8.476



Signal: DAD1 A, Sig=254,4 Ref=off

RT [min]	Type	Width [min]	Area	Height	Area%	Name
4.633	BB	0.0348	29.1717	12.0383	13.0422	
4.732	BB	0.0380	7.0036	2.5521	3.1312	
5.333	BB	0.0419	12.1774	4.0687	5.4444	
5.784	BB	0.0329	12.2543	5.7431	5.4787	
6.377	BB	0.0588	14.5174	3.2361	6.4905	
6.620	BB	0.0345	13.1629	5.6975	5.8849	
7.116	BB	0.0302	5.3945	2.8305	2.4118	
7.333	BB	0.0478	18.5070	5.5617	8.2742	
7.475	BB	0.0353	16.9589	7.5340	7.5821	
7.652	BB	0.0488	28.7696	8.3202	12.8625	
7.788	BB	0.0367	30.7418	12.9530	13.7442	
7.934	BB	0.0404	19.0526	7.2029	8.5181	
8.195	BB	0.0404	15.9594	6.2333	7.1352	
	Sum		223.6710			

Signal: DAD1 B, Sig=280,4 Ref=off

RT [min]	Type	Width [min]	Area	Height	Area%	Name
5.336	BB	0.0478	7.4762	2.0871	9.8544	
5.786	BB	0.0317	17.9452	8.6355	23.6537	
6.330	BB	0.0532	6.0076	1.5172	7.9186	
6.619	BB	0.0352	6.1180	2.6219	8.0641	
7.332	BB	0.0431	10.2088	3.4901	13.4562	
7.788	BB	0.0367	28.1107	11.8484	37.0529	
	Sum		75.8665			

# Single Injection Report



Agilent Technologies

Signal: MSD1 TIC, MS File

RT [min]	Type	Width [min]	Area	Height	Area%	Name
4.761	BB	0.0666	1406633.750 0	348907.0625	6.1761	
5.655	BB	0.0528	1114804.750 0	341069.5938	4.8947	
7.048	BB	0.0476	434055.3125	154008.4531	1.9058	
7.136	BB	0.0500	939378.7500	310313.9375	4.1245	
7.239	BB	0.0604	340307.7813	97222.2813	1.4942	
7.362	BB	0.0661	434381.3750	121814.1250	1.9072	
7.496	BB	0.0569	2818198.500 0	778363.6250	12.3738	
7.664	BB	0.0731	4422508.000 0	963479.6875	19.4178	
7.808	BB	0.0589	5497396.000 0	1450874.625 0	24.1373	
7.951	BB	0.0666	4002759.250 0	993077.0625	17.5748	
8.353	BB	0.0685	781777.4375	186395.9219	3.4325	
8.476	BB	0.0769	583342.8125	109450.1172	2.5613	
		Sum	22775543.71			