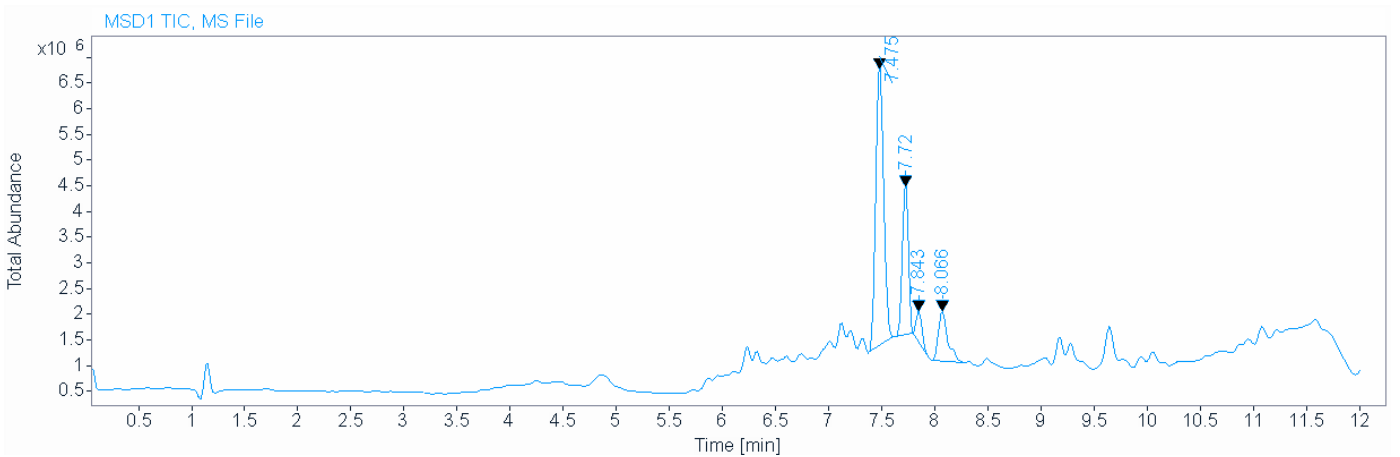
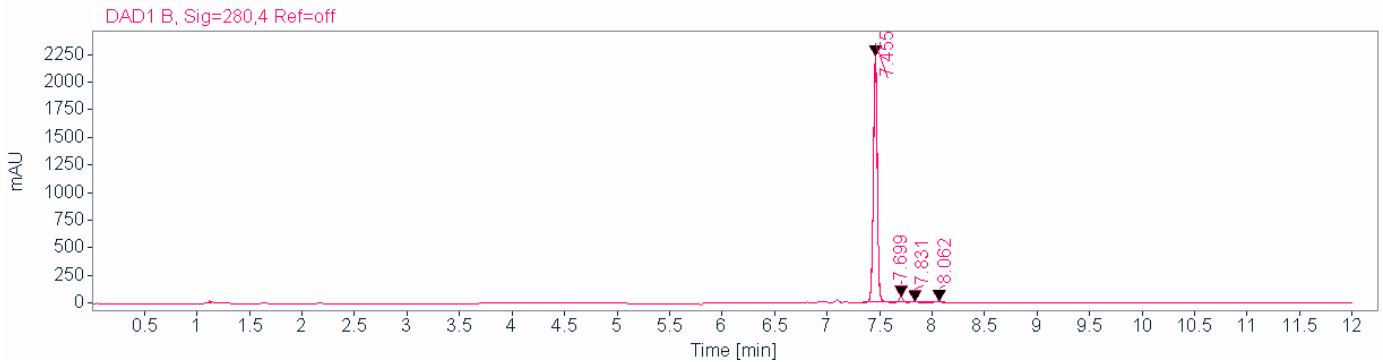
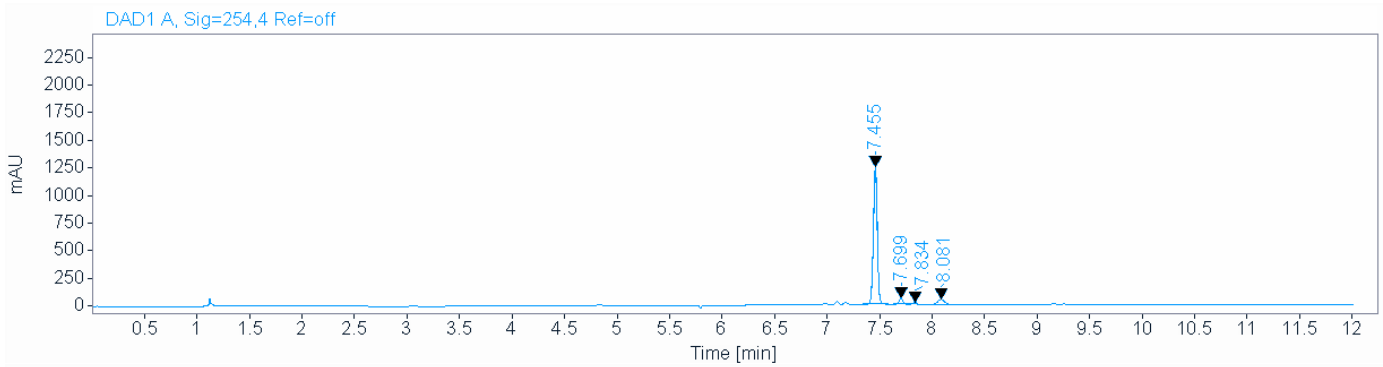


Single Injection Report



Agilent Technologies

Data file: C:\Users\Public\Documents\ChemStation\1\Data\TODD\EGT\EGT 2019-03-26 15-32-17\001-P1-C1-SSP 2018 4d (f10-13).D
Sample name: SSP 2018 4d (f10-13)
Description:
Sample amount: 0.000 **Sample type:** Sample
Instrument: G25LCMS **Location:** P1-C1
Injection date: 3/26/2019 3:33:29 PM **Injection:** 1 of 1
Acq. method: EGT_OSM1.M **Injection volume:** 5.000
Analysis method: EGT_OSM1.M **Acq. operator:** SYSTEM
Last changed: 3/28/2019 12:10:38 PM



Single Injection Report



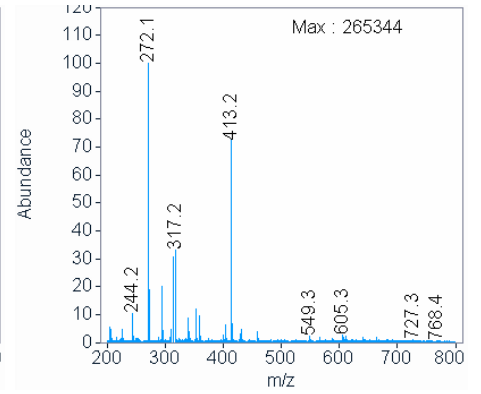
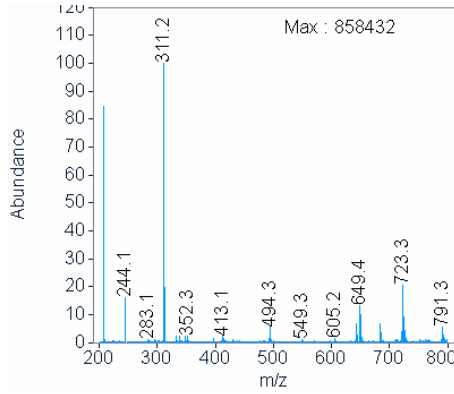
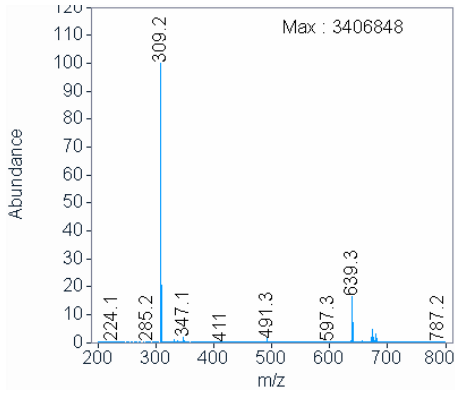
Agilent Technologies

Signal MSD1 TIC, MS File

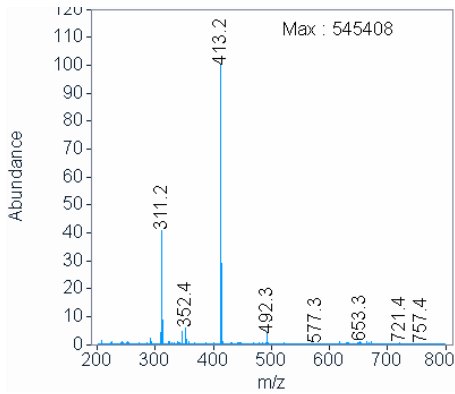
Peak RT 7.475

Peak RT 7.720

Peak RT 7.843



Peak RT 8.066



Single Injection Report



Agilent Technologies

Signal: DAD1 A, Sig=254,4 Ref=off

RT [min]	Type	Width [min]	Area	Height	Area%	Name
7.455	BB	0.0395	3201.6589	1246.3806	87.9110	
7.699	BB	0.0410	142.7547	54.5816	3.9198	
7.834	BB	0.0435	53.6904	18.6962	1.4742	
8.081	BB	0.0761	243.8289	48.5231	6.6950	
	Sum		3641.9329			

Signal: DAD1 B, Sig=280,4 Ref=off

RT [min]	Type	Width [min]	Area	Height	Area%	Name
7.455	BB	0.0400	5754.2373	2234.8391	95.6471	
7.699	BB	0.0414	135.0641	51.7563	2.2450	
7.831	BB	0.0491	37.0445	11.0602	0.6158	
8.062	BB	0.0853	89.7684	15.6867	1.4921	
	Sum		6016.1143			

Signal: MSD1 TIC, MS File

RT [min]	Type	Width [min]	Area	Height	Area%	Name
7.475	BB	0.0804	28577936.00	5487516.500	58.5775	
			00	0		
7.720	BB	0.0658	11779779.00	2973372.750	24.1456	
			00	0		
7.843	BB	0.0655	2295396.250	582799.8750	4.7050	
			0			
8.066	BB	0.0923	6133418.500	984623.9375	12.5720	
			0			
	Sum		48786529.75			