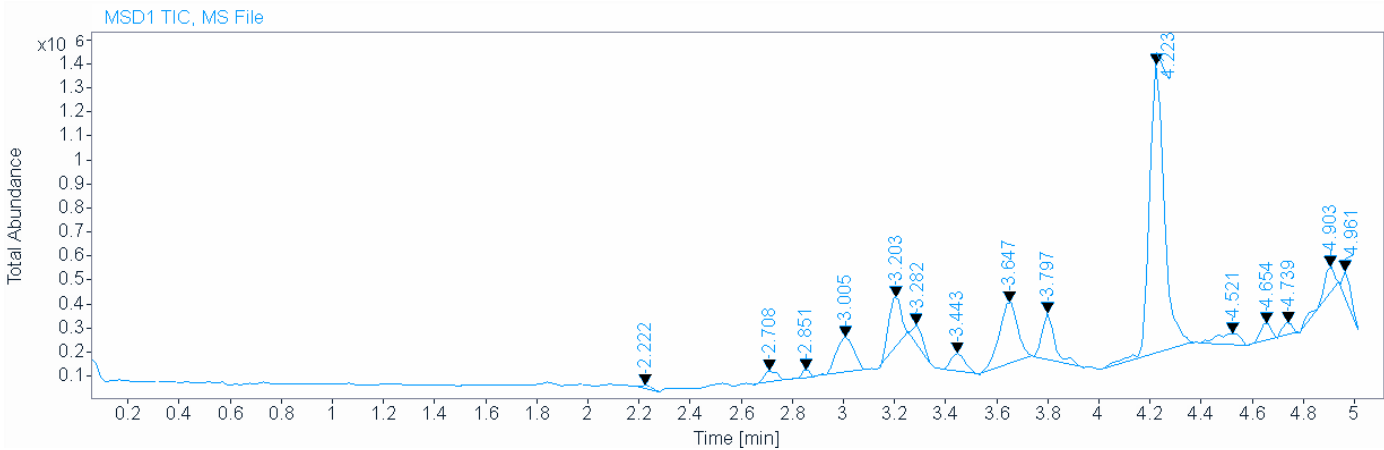
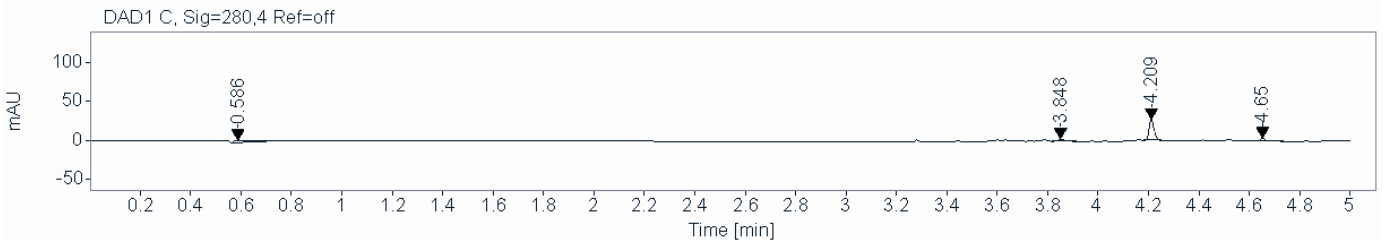
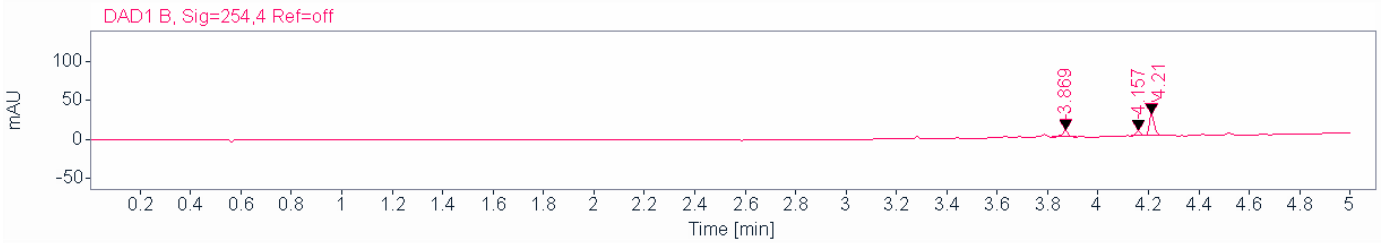
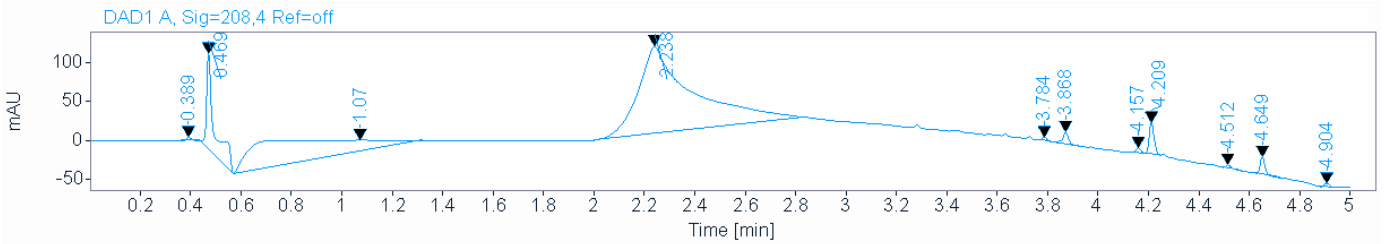


Single Injection Report



Agilent Technologies

Data file: C:\Users\Public\Documents\ChemStation\1\Data\TODD\DM\Dmitrij 2023-04-04 13-06-29\WS (Arren).D
Sample name: WS (Arren)
Description:
Sample amount: 0.000 **Sample type:** Sample
Instrument: G25LCMS **Location:** P2-A2
Injection date: 4/4/2023 1:31:42 PM **Injection:** 1 of 1
Acq. method: EGT_5min pos.M **Injection volume:** 0.900
Analysis method: EGT_5min pos.M **Acq. operator:** Dmitrij Melechov
Last changed: 4/4/2023 4:28:23 PM (modified after loading)



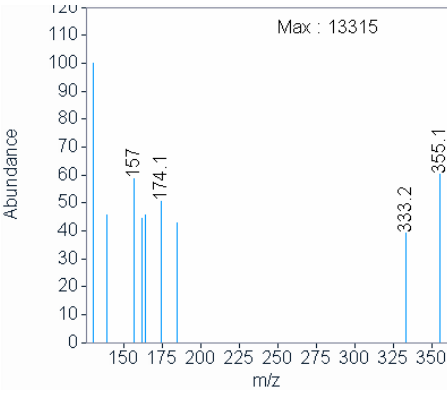
Signal MSD1 TIC, MS File

Single Injection Report

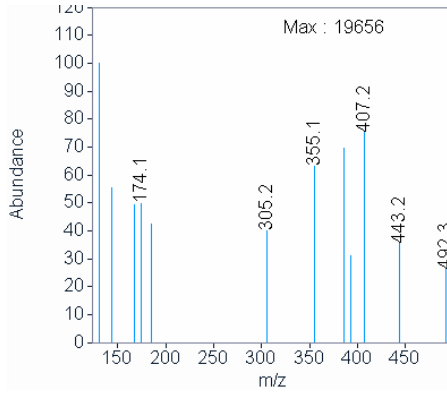


Agilent Technologies

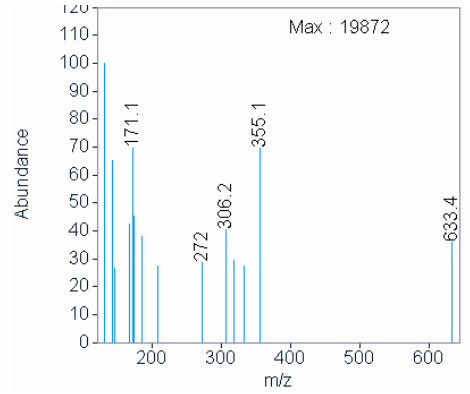
Peak RT 2.222



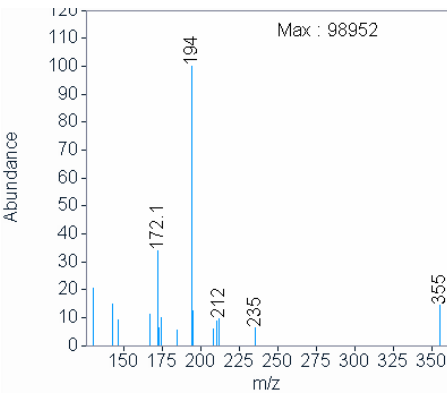
Peak RT 2.708



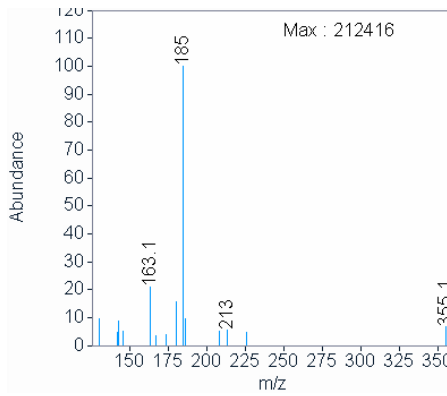
Peak RT 2.851



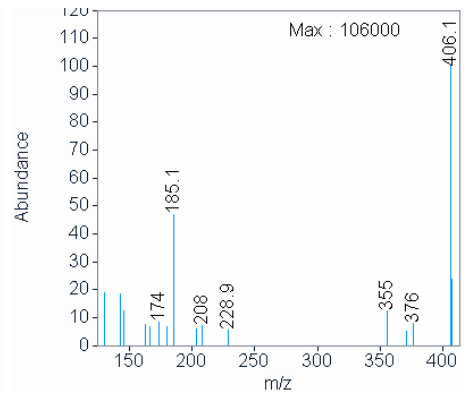
Peak RT 3.005



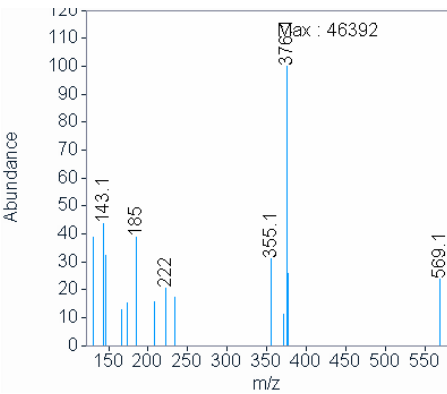
Peak RT 3.203



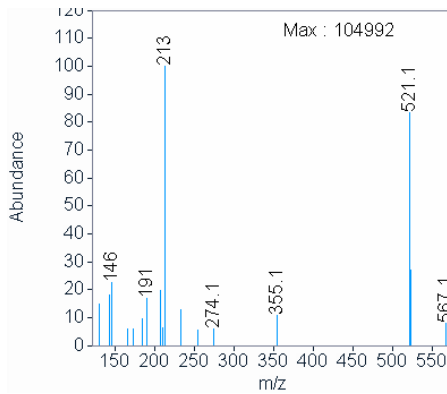
Peak RT 3.282



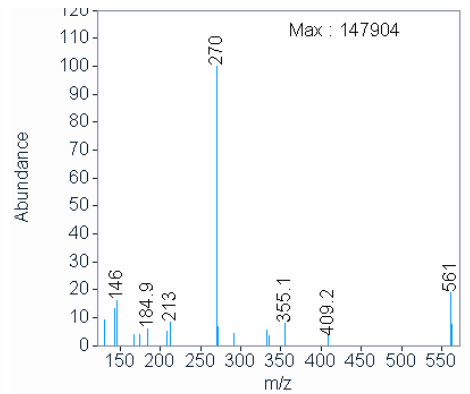
Peak RT 3.443



Peak RT 3.647



Peak RT 3.797

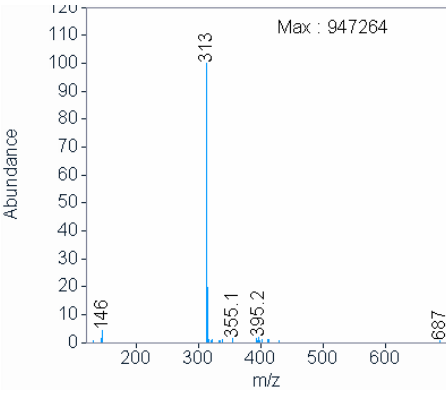


Single Injection Report

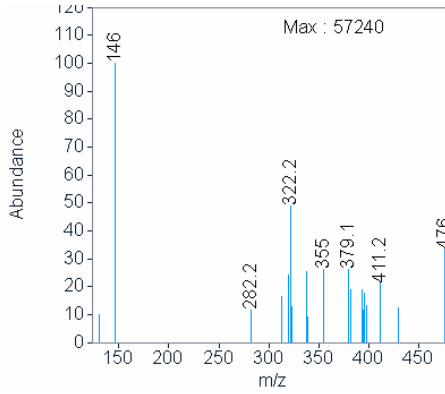


Agilent Technologies

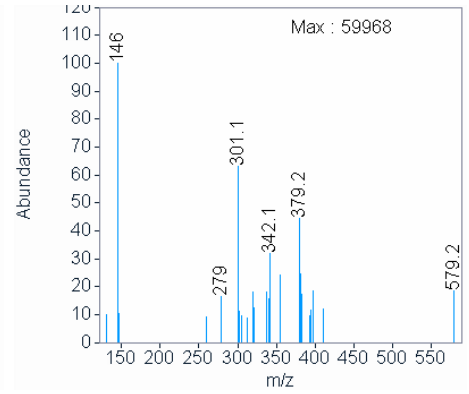
Peak RT 4.223



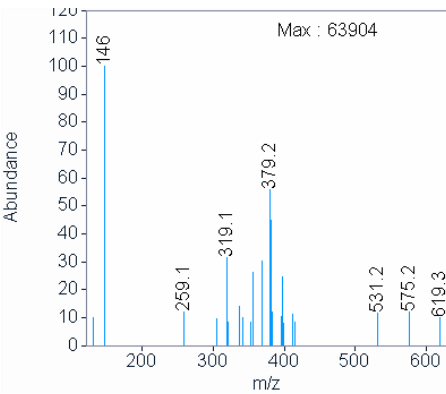
Peak RT 4.521



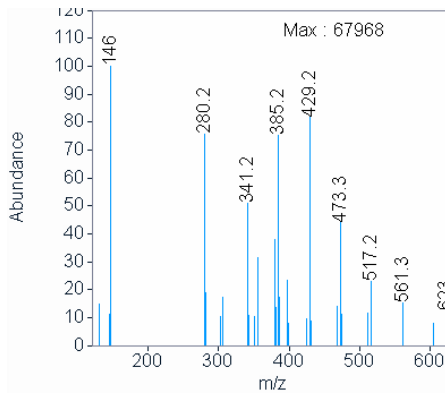
Peak RT 4.654



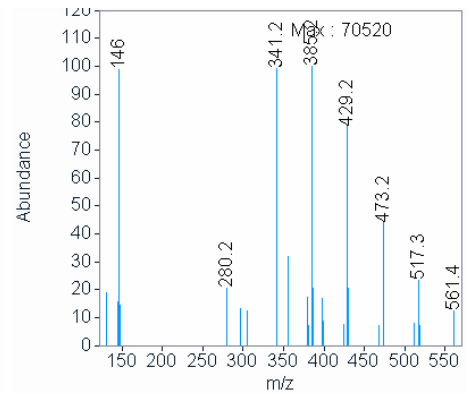
Peak RT 4.739



Peak RT 4.903



Peak RT 4.961



Signal: DAD1 A, Sig=208,4 Ref=off

RT [min]	Type	Width [min]	Area	Height	Area%	Name
0.389	BB	0.0204	6.1472	4.6531	0.2089	
0.469	BB	0.0289	263.0877	123.0305	8.9419	
1.070	BB	0.6745	840.0739	14.7942	28.5526	
2.238	BB	0.1935	1696.2026	111.7841	57.6508	
3.784	BB	0.0183	5.1024	4.4728	0.1734	
3.868	BB	0.0232	24.3071	15.5611	0.8262	
4.157	BB	0.0198	8.7395	6.8732	0.2970	
4.209	BB	0.0212	54.9603	40.8412	1.8680	
4.512	BB	0.0208	6.5455	4.6822	0.2225	
4.649	BB	0.0198	29.4919	22.5392	1.0024	
4.904	BB	0.0256	7.5429	4.8542	0.2564	
	Sum		2942.2010			

Single Injection Report



Agilent Technologies

Signal: DAD1 B, Sig=254,4 Ref=off

RT [min]	Type	Width [min]	Area	Height	Area%	Name
3.869	BB	0.0246	14.8533	8.6314	23.8763	
4.157	BB	0.0201	8.2592	6.3645	13.2765	
4.210	BB	0.0222	39.0969	27.2555	62.8472	
	Sum		62.2095			

Signal: DAD1 C, Sig=280,4 Ref=off

RT [min]	Type	Width [min]	Area	Height	Area%	Name
0.586	BB	0.0782	20.2445	3.4367	29.5800	
3.848	BB	0.0263	5.6984	2.9824	8.3262	
4.209	BB	0.0209	37.0282	27.0885	54.1034	
4.650	BB	0.0206	5.4686	3.9559	7.9903	
	Sum		68.4397			

Signal: MSD1 TIC, MS File

RT [min]	Type	Width [min]	Area	Height	Area%	Name
2.222	BB	0.0473	38919.7070	13720.0264	0.3693	
2.708	BB	0.0577	176977.8750	51142.6055	1.6795	
2.851	BB	0.0480	77570.1172	36031.5469	0.7361	
3.005	BB	0.0829	715987.4375	148134.2500	6.7946	
3.203	BB	0.0556	742848.3125	218199.1719	7.0495	
3.282	BB	0.0472	212959.5938	75208.8516	2.0210	
3.443	BB	0.0620	296534.8125	75017.3516	2.8141	
3.647	BB	0.0793	1318880.1250	264830.4375	12.5160	
			0			
3.797	BB	0.0568	679576.7500	193970.7344	6.4491	
4.223	BB	0.0638	4953646.0000	1207268.5000	47.0096	
			0	0		
4.521	BB	0.0998	305114.2500	46545.8750	2.8955	
4.654	BB	0.0434	209212.9844	74291.5781	1.9854	
4.739	BB	0.0484	148901.3594	53461.3477	1.4131	
4.903	BB	0.0519	412110.8125	116342.1484	3.9109	
4.961	BBA	0.0399	248290.3125	103708.6875	2.3562	
	Sum		10537530.44			