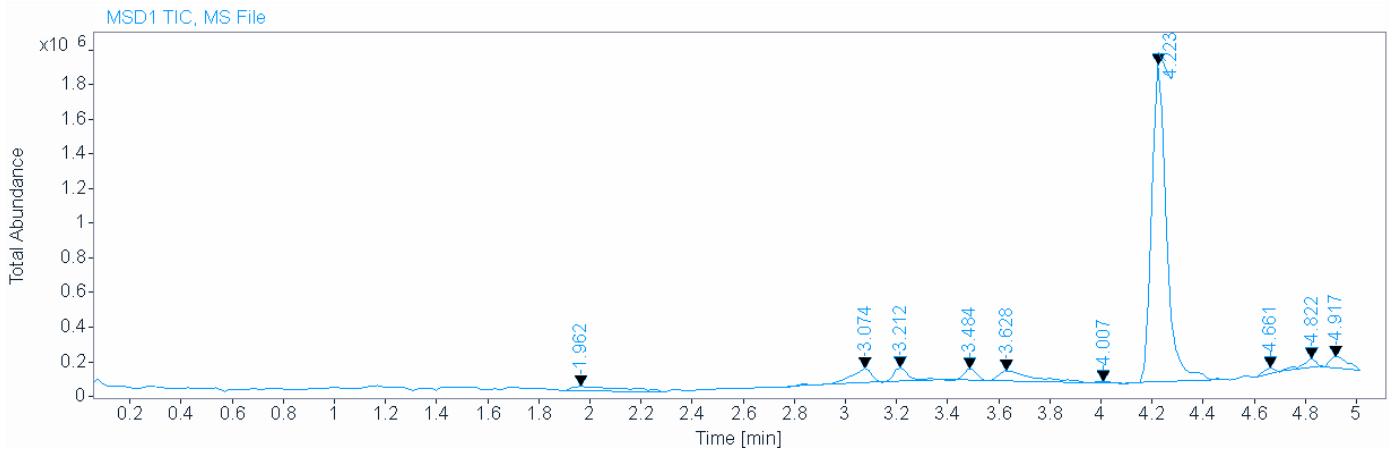
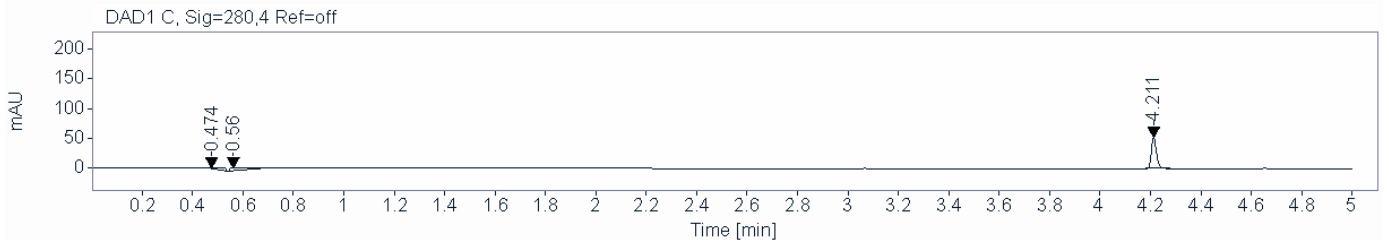
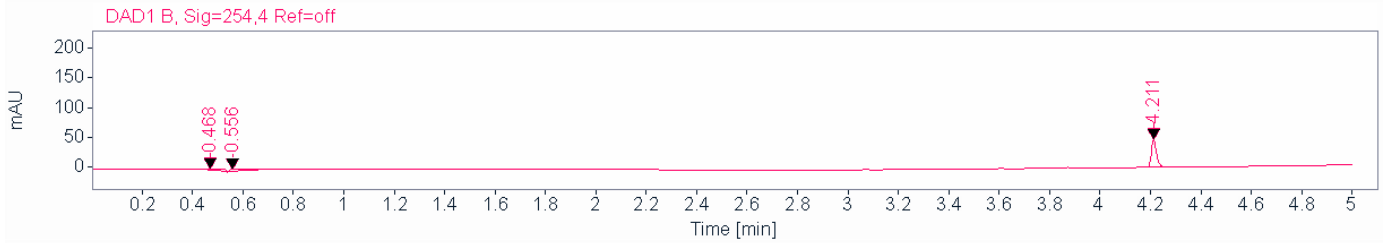
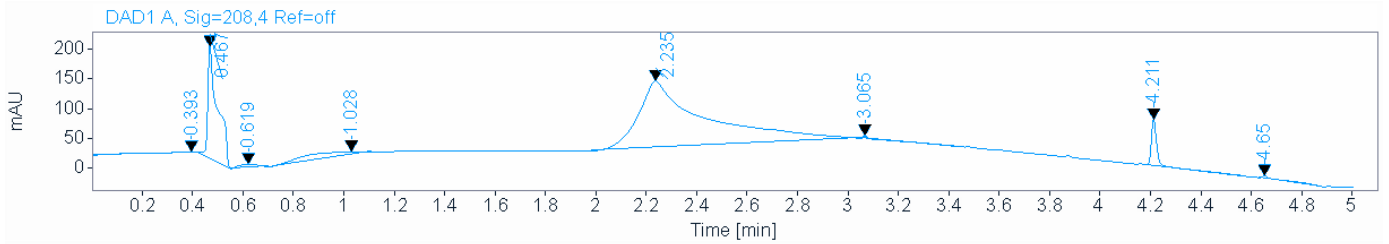


# Single Injection Report



Agilent Technologies

**Data file:** C:\Users\Public\Documents\ChemStation\1\Data\TODD\DM\Dmitrij 2023-04-04 13-06-29\WS (TH).D  
**Sample name:** WS (TH)  
**Description:**  
**Sample amount:** 0.000 **Sample type:** Sample  
**Instrument:** G25LCMS **Location:** P2-A3  
**Injection date:** 4/4/2023 1:38:23 PM **Injection:** 1 of 1  
**Acq. method:** EGT\_5min pos.M **Injection volume:** 0.900  
**Analysis method:** EGT\_5min pos.M **Acq. operator:** Dmitrij Melechov  
**Last changed:** 4/4/2023 4:28:23 PM (modified after loading)



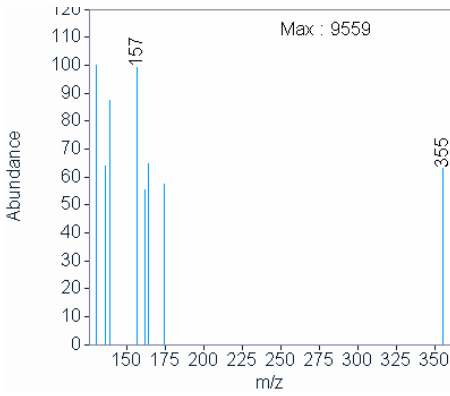
Signal MSD1 TIC, MS File

# Single Injection Report

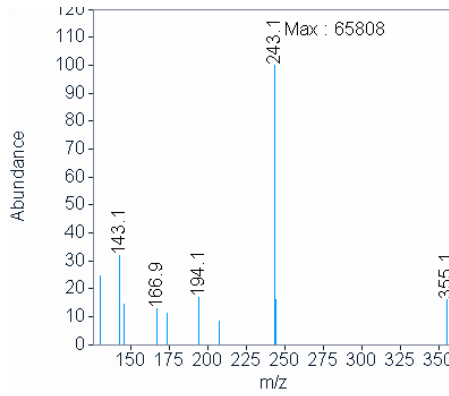


Agilent Technologies

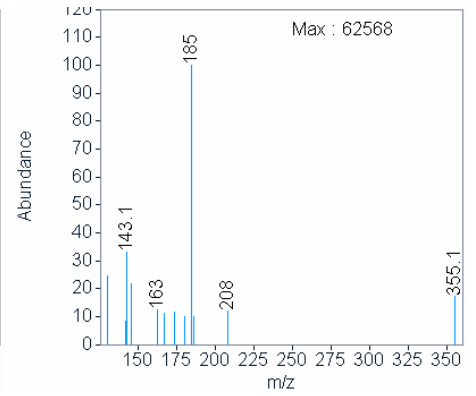
Peak RT 1.962



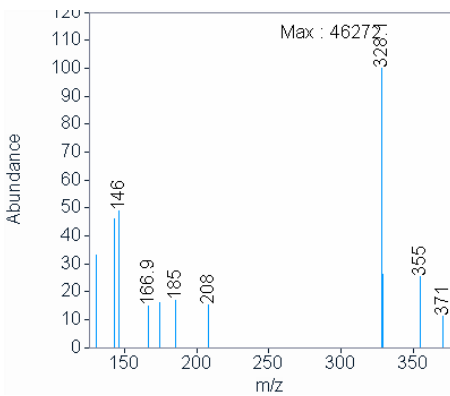
Peak RT 3.074



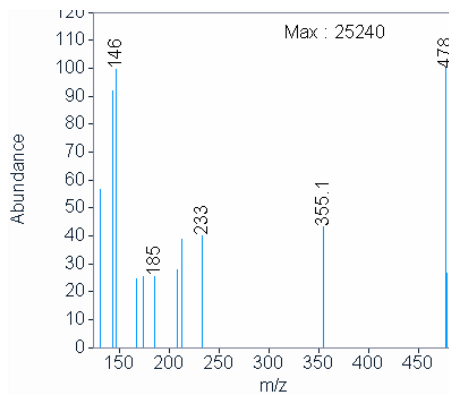
Peak RT 3.212



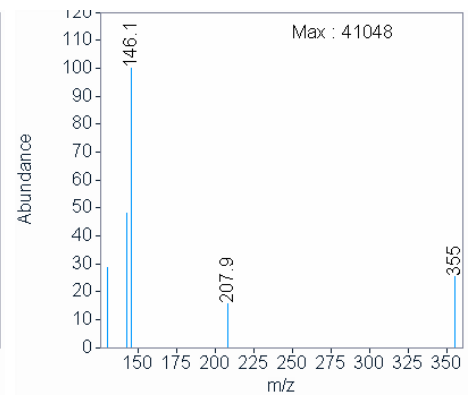
Peak RT 3.484



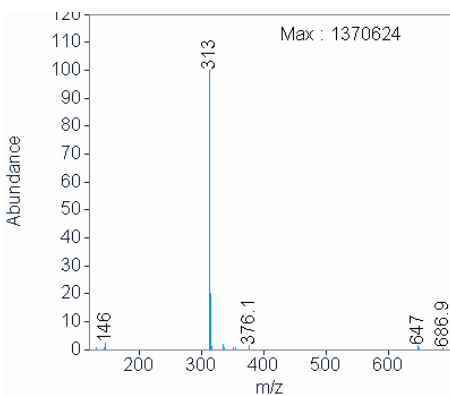
Peak RT 3.628



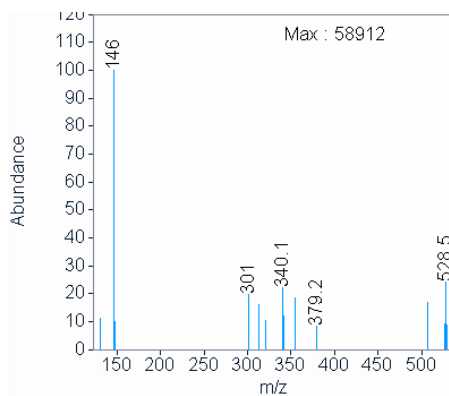
Peak RT 4.007



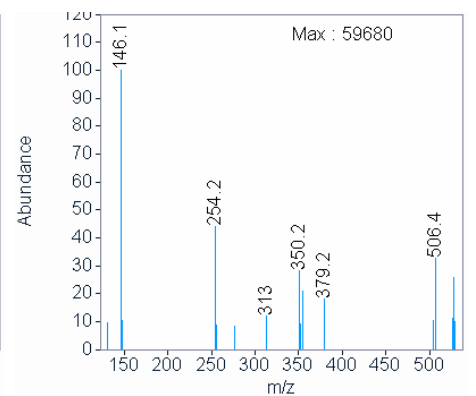
Peak RT 4.223



Peak RT 4.661



Peak RT 4.822

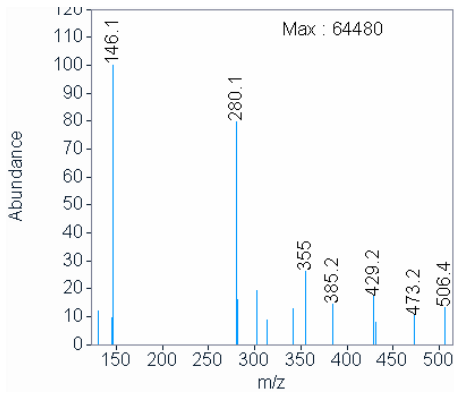


# Single Injection Report



Agilent Technologies

Peak RT 4.917



Signal: DAD1 A, Sig=208,4 Ref=off

RT [min]	Type	Width [min]	Area	Height	Area% Name
0.393	BB	0.1846	17.3502	1.1237	0.5909
0.467	BB	0.0363	514.0673	188.7354	17.5090
0.619	BB	0.0856	30.1877	6.0124	1.0282
1.028	BB	0.3241	137.7568	5.1745	4.6920
2.235	BB	0.2352	2083.1526	112.1428	70.9518
3.065	BB	0.0353	13.6791	5.0918	0.4659
4.211	BB	0.0224	116.4099	78.0457	3.9649
4.650	BB	0.0623	23.4085	4.7689	0.7973
Sum			2936.0122		

Signal: DAD1 B, Sig=254,4 Ref=off

RT [min]	Type	Width [min]	Area	Height	Area% Name
0.468	BB	0.0722	15.0487	2.5918	15.0580
0.556	BB	0.0661	20.4315	3.9665	20.4440
4.211	BB	0.0213	64.4584	46.2661	64.4980
Sum			99.9386		

Signal: DAD1 C, Sig=280,4 Ref=off

RT [min]	Type	Width [min]	Area	Height	Area% Name
0.474	BB	0.1130	12.8745	1.3712	11.3053
0.560	BB	0.0658	27.3826	5.4839	24.0451
4.211	BB	0.0213	73.6230	52.8006	64.6496
Sum			113.8802		



Signal: MSD1 TIC, MS File

RT [min]	Type	Width [min]	Area	Height	Area%	Name
1.962	BB	0.1862	420057.2500	28766.4609	4.0146	
3.074	BB	0.1056	549575.2500	86813.3984	5.2525	
3.212	BB	0.0690	377513.6250	82929.4297	3.6080	
3.484	BB	0.0620	244065.2969	69752.8047	2.3326	
3.628	BB	0.1339	562316.5000	61062.8281	5.3743	
4.007	BB	0.0749	40401.1367	9736.1396	0.3861	
4.223	BB	0.0638	7579617.0000	1844802.1250	72.4412	
			0	0		
4.661	BB	0.0552	110135.2813	37620.7383	1.0526	
4.822	BB	0.0715	242704.0313	56244.8867	2.3196	
4.917	BBA	0.0820	336749.9688	67427.6484	3.2184	
		Sum	10463135.33			