



AVK NEEDLE VALVE, PN10/16

872/00-004

DI/SS body, SS internals, A2 bolts, gearbox cont. mod.

AVK series 872 needle valves are designed for throttling and control of pressure and flow at high flow rates and high differential pressures. The focus is on durability and reliability with the sturdy valve housing made of either stainless steel or ductile iron coated with fusion bonded epoxy. It controls with high precision and the high quality materials guarantee long service life with easy maintenance access. Gearbox construction with bronze worm wheel to ensure precise regulation kept throughout lifetime.

Product description:

Needle valve for continuous pressure or flow control of water to max. 70°C

Standards:

- Designed according to EN 1074-5
- Face-to-face dimension according to EN 558 Table 2 Basic Series 15
- Flange drilling to EN1092, PN10/16

Test/Approvals:

- Hydraulic test according to EN 1074-1 and 5/ EN12266

Features:

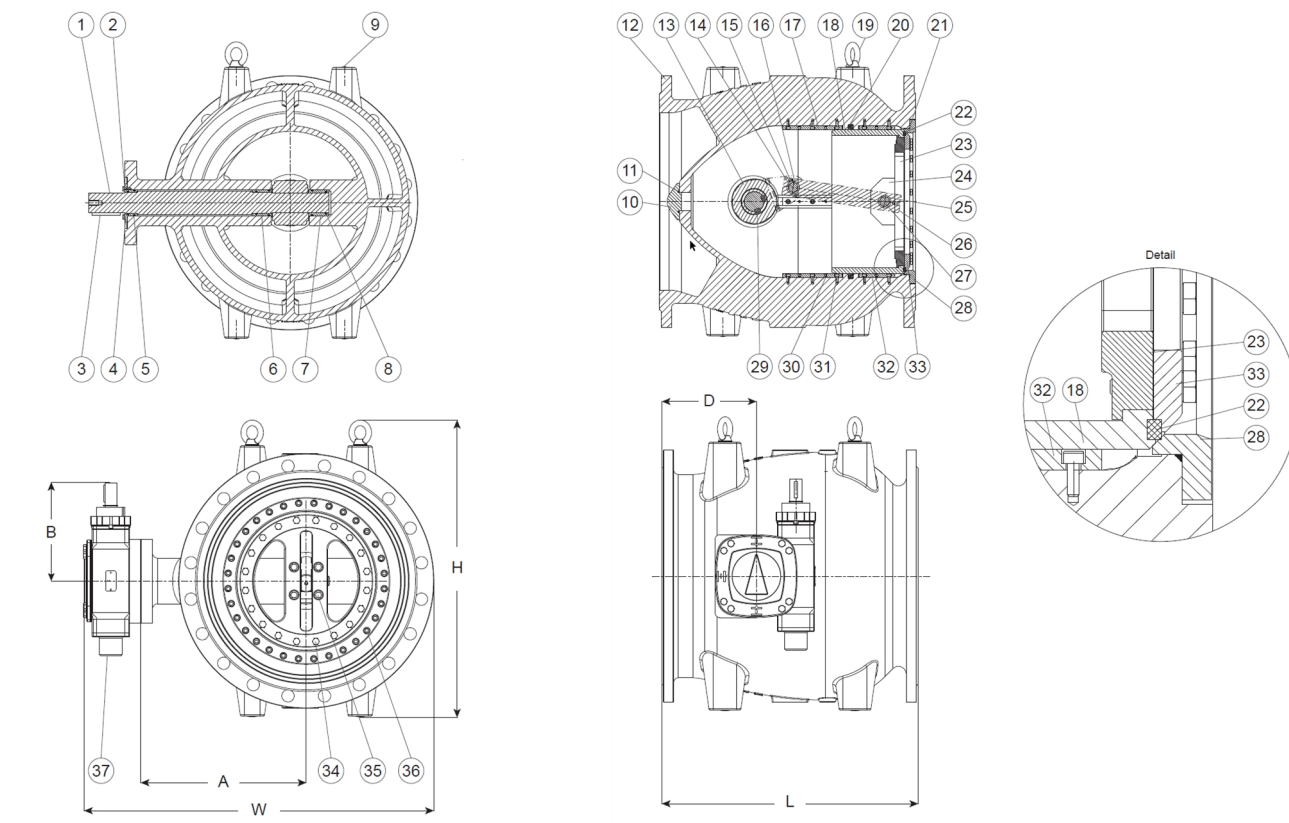
- One-piece body construction
- Symmetrical flow path ensures evenly distributed flow around the entire seat in any open position
- Pressure balance in chamber inside for low operating torque
- Internal body shape is optimized to give low head loss coefficient
- 4 - 6 guide rails ensure very low vibration
- Main seal mounted on the piston as opposed to on the seat preventing abrasion when fitted with anti-cavitation trim
- Bushings in high strength alu-bronze
- Gaskets in polyurethane for high resistance to abrasion
- Gearbox with bronze wormgear, suitable for continuous modulating operation
- Internal parts and fasteners in stainless steel
- All iron parts coated with min. 250µm, blue RAL5005 epoxy - fusion bonded (FBE) for DN200-1000, 2-pack for DN1200 and larger
- DN80-150 bodies in uncoated stainless steel
- Double O-rings sealed drive shaft
- Easy access for maintenance
- Functions:
 - - Flow control
 - - Pressure regulation
 - - Pump start
 - - Reservoir inlets
 - - Discharge
 - - Turbine by-pass
 - - Air regulation

Accessories:

Handwheel for gearbox, actuator, anti-cavitation trim options



Expect ... **AVR**



Component list:

1. Shaft	Stainless steel 1.4028	20. Gasket	Polyurethane
2. Screw	Stainless steel A2-70	21. O-ring	EPDM rubber
3. Key	Stainless steel	22. Gasket	Polyurethane
4. Ring cap	Alu-bronze CC333G	23. Piston flange	Stainless steel 1.4301
5. O-ring	EPDM rubber	24. Fixing plate	Stainless steel 1.4301
6. Bush	Alu-bronze CC333G	25. Bush	Alu-bronze CC333G
7. Bush	Alu-bronze CC333G	26. Connection rod	Stainless steel 1.4028
8. O-ring	EPDM rubber	27. Pin	Stainless steel 1.4028
9. Plug	Plastic	28. Body seal ring	Stainless steel 1.4301
10. Ogive	Stainless steel 1.4028	29. Key	Stainless steel
11. O-ring	EPDM rubber	30. Socket screw	Stainless steel A2-70
12. Body ⁽¹⁾	Ductile iron GJS-500-7 (GGG-50)	31. Bolt, socket head	Stainless steel A2-70
13. Crank ⁽²⁾	Ductile iron GJS-500-7 (GGG-50)	32. Guide ⁽³⁾	Brass CW617N
14. Pin	Stainless steel 1.4028	33. Fixing gasket ring	Stainless steel 1.4301
15. Split pin	Stainless steel 1.4301	34. Bolt, hexagon head	Stainless steel A2-70
16. Bush	Alu-bronze CC333G	35. Bolt, socket head	Stainless steel A2-70
17. Guide ⁽³⁾	Brass CW617N	36. Bolt, socket head	Stainless steel A2-70
18. Piston tube	Stainless steel 1.4301	37. Gearbox	
19. Eye bolt	Steel, zinc coated		

Components may be substituted with equivalent or higher class materials without prior notification.

(1) DN 80, 100 and 150: cast stainless steel 1.4308 / CF8

(2) DN 80, 100 and 150: stainless steel 1.4028 / 420B

(3) DN 80, 100 and 150: cast stainless steel 1.4308 / CF8 as part of the body

AVK NEEDLE VALVE, PN10/16**872/00-004****DI/SS body, SS internals, A2 bolts, gearbox cont. mod.****Reference nos. and dimensions:**

AVK ref. no.	DN mm	Flange drilling	A mm	B mm	D mm	H3 mm	L mm	W mm	Theoretical weight/kg
872-0080-00-10900300100	80	PN10/16	125	80	95	200	260	305	19
872-0100-00-10900300100	100	PN10/16	145	80	120	220	300	335	26
872-0150-00-10900300100	150	PN10/16	175	80	135	285	350	400	47
872-0200-00-00100300000	200	PN10	220	150	150	425	400	505	105
872-0200-00-10100300000	200	PN16	220	150	150	425	400	505	105
872-0250-00-00100300000	250	PN10	260	165	165	475	450	580	145
872-0250-00-10100300000	250	PN16	260	165	165	475	450	580	145
872-0300-00-00100300000	300	PN10	305	185	185	535	500	660	225
872-0300-00-10100300000	300	PN16	305	185	185	535	500	660	225
872-0350-00-00100300000	350	PN10	350	205	205	595	550	770	295
872-0350-00-10100300000	350	PN16	350	205	205	595	550	770	295
872-0400-00-00100300000	400	PN10	385	235	235	665	600	835	404
872-0400-00-10100300000	400	PN16	385	235	235	665	600	835	404
872-0450-00-00100300000	450	PN10	420	240	240	745	650	900	450
872-0450-00-10100300000	450	PN16	420	240	240	745	650	900	450
872-0500-00-00100300000	500	PN10	445	245	245	755	700	965	510
872-0500-00-10100300000	500	PN16	445	245	245	755	700	965	510
872-0600-00-00100300000	600	PN10	505	280	280	925	800	1090	820
872-0600-00-10100300000	600	PN16	505	280	280	925	800	1090	820
872-0700-00-00100300000	700	PN10	565	315	315	1025	900	1185	1100
872-0700-00-10100300000	700	PN16	565	315	315	1025	900	1185	1095
872-0800-00-00100300000	800	PN10	650	350	350	1205	1000	1330	1580
872-0800-00-10100300000	800	PN16	650	350	350	1205	1000	1330	1600
872-0900-00-00100300000	900	PN10	715	385	385	1405	1100	1440	1780
872-0900-00-10100300000	900	PN16	715	385	385	1405	1100	1440	1800
872-1000-00-00100300000	1000	PN10	740	415	415	1495	1200	1275	2500
872-1000-00-10100300000	1000	PN16	740	415	415	1495	1200	1275	2420
872-1200-00-00100300000	1200	PN10	900	445	445	1725	1400	1880	3530
872-1200-00-10100300000	1200	PN16	900	445	445	1725	1400	1880	3575
872-1400-00-00100300000	1400	PN10	1015	475	475	1965	1600	2095	5050
872-1400-00-10100300000	1400	PN16	1015	475	475	1965	1600	2095	5100
872-1600-00-00100300000	1600	PN10	1150	625	625	2225	1800	2395	8500
872-1600-00-10100300000	1600	PN16	1150	625	625	2225	1800	2395	8500

The designs, materials and specifications shown are subject to change without notice due to the continuous development of our product range.

